

WHO / UNICEF

Joint Monitoring Programme
for Water Supply and Sanitation

Estimates for the use of

**Improved Drinking-Water Sources
and Improved Sanitation Facilities**

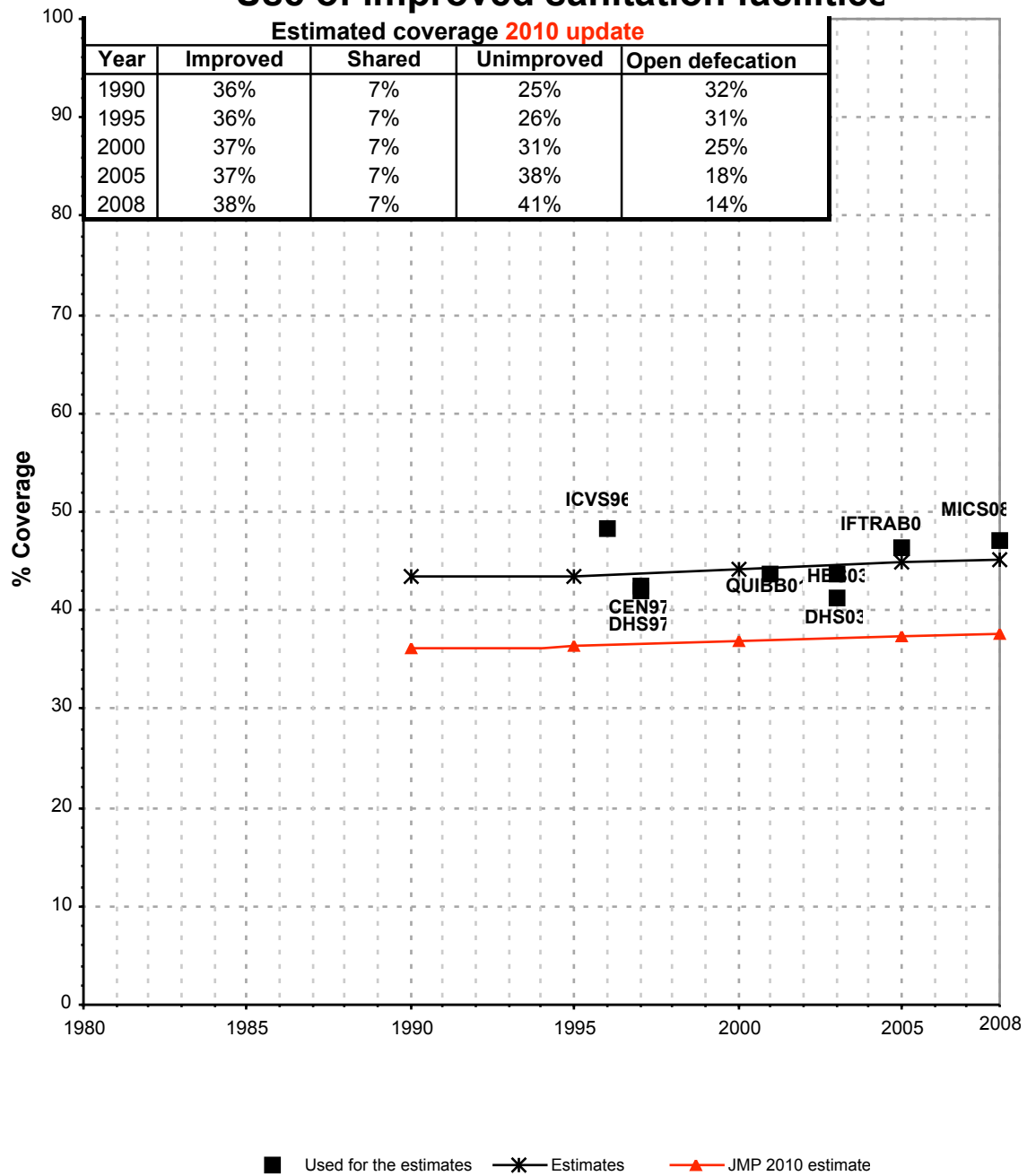
Updated March 2010

childinfo.org

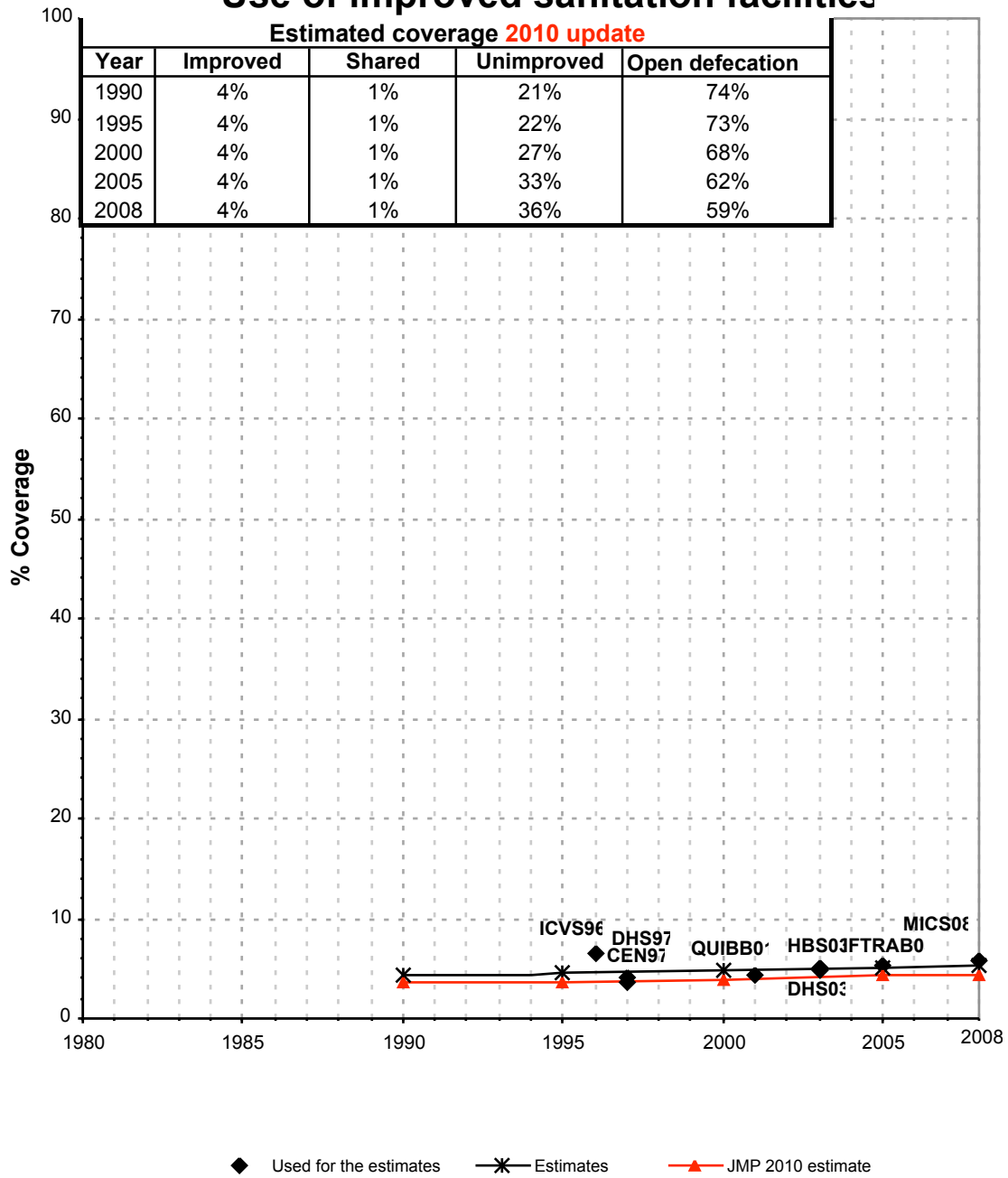
Use of sanitation facilities		MICS08		Mozambique	
Multiple Indicator Cluster Survey				2008	
Original denomination	Classification	Urban	Rural	Total	
	Flush and pour flush	14.3	0.4		
	to piped sewer system				
	to septic tank				
	to pit				
	to unknown place/ not sure/DK				
	to elsewhere				
Retrete com autoclismo	Flush/toilets	7.0	0.2		
	to piped sewer system				
	to septic tank				
	to pit				
	to unknown place/ not sure/DK				
	to elsewhere				
	Private flush/toilet				
	to piped sewer system				
	to septic tank				
	to pit				
	to unknown place/ not sure/DK				
	to elsewhere				
	Public/shared flush/toilet				
	to piped sewer system				
	to septic tank				
	to pit				
	to unknown place/ not sure/DK				
	to elsewhere				
	Latrines	78.0	44.1		
Retrete sem autoclismo	Pour flush latrines	7.3	0.2		
	to piped sewer system				
	to septic tank				
	to pit				
	to unknown place/ not sure/DK				
	to elsewhere				
	Private pour flush latrine				
	to piped sewer system				
	to septic tank				
	to pit				
	to unknown place/ not sure/DK				
	to elsewhere				
	Public/shared pour flush latrine				
	to piped sewer system				
	to septic tank				
	to pit				
	to unknown place/ not sure/DK				
	to elsewhere				
	Dry latrines	70.7	43.9		
	Improved latrines	32.8	5.4		
Latrina melhorada	Ventilated Improved Pit latrine	17.9	1.4		
Latrina tradicional melhorada	Pit latrine with slab/covered latrine	14.9	4.0		
	Traditional latrine				
Latrina não melhorada	Pit latrine without slab/open pit	37.9	38.5		
	Hanging toilet/hanging latrine				
	Bucket latrine				
	Other				
	Private Latrines				
	Ventilated Improved Pit latrine				
	Pit latrine with slab/covered latrine				
	Traditional latrine				
	Pit latrine without slab/open pit				
	Hanging toilet/hanging latrine				
	Bucket latrine				
	Other				
	Public/shared Latrines				
	Ventilated Improved Pit latrine				
	Pit latrine with slab/covered latrine				
	Traditional latrine				
	Pit latrine without slab/open pit				
	Hanging toilet/hanging latrine				
	Bucket latrine				
	Other				
	Composting toilets				
	Composting toilet (private)				
	Composting toilet (shared)				
	Other improved				
	Other				
	Other				
No mato	No facility, bush, field	11.9	54.1		
	Other unimproved	2.6	0.9		
Na praia (on the beach)	Other	2.6	0.9		
Outro	Other	0.0	0.0		
Sem info	DK/missing information	0.5	0.6		
	Total	100.0	99.9		
Calculations					
Estimations					
	Sewerage connection, based on IFTRAB05	5.0	0.0		
Access to improved sanitation :		47%	6%		
Access to sewerage connections :		5%	0%		
	Used for the estimates	Yes	Yes		
	Used for the estimates	Yes	Yes		
Ratios	Shared improved facilities/all improved facilities	18.4%	19.8%		
	Improved latrine / All latrines	51%	13%		
	Covered dry latrines / All dry latrines	21%	8%		
	VIP / All latrines	25%	3%		
	Traditional latrines / All latrines				
	Improved + traditional latrines / All traditional latrines	28%	9%		
	Sewerage connection among flush/pour flush				
	Sewerage connection among flush				
	Number of people covered by the survey				
	Number of households covered by the survey				
	Total population				
Comments					

Mozambique			SANITATION															
			URBAN								RURAL							
			Sewer connection		Total		Open defecation		Shared		Sewer connection		Total		Open defecation		Shared	
Source	Code	Year	Used	Not used	Used	Not used	Used	Not used	Used	Not used	Used	Not used	Used	Not used	Used	Not used	Used	Not used
Inquérito Nacional aos Agregados Familiares sobre as Condições de Vida	ICVS96	1996	9.9		48.3		24.9				0.7		6.5		64.3			
Census	CEN97	1997	6.1		42.5		29.0				0.3		4.1		73.9			
Demographic and Health Survey	DHS97	1997	6.0		42.1		31.4				0.0		3.7		73.1			
Global Water Supply and Sanitation Assessment 2000.	JMP99	1999		12.2		70.6						0.9		26.0				
INE-QUIBB	QUIBB01	2001	5.3		43.6		21.3				0.1		4.2		70.9			
Household Budget Survey	HBS03	2003	4.6		43.6		27.3				0.1		5.0		66.3			
Labor force Survey	DHS03	2003	2.9		41.2		21.6		14.8		0.1		4.8		63.0		15.9	
Inquérito Integrado à Força de Trabalho 2004-2005	IFTRAB05	2005	5.4		46.4		16.6				0.0		5.2		66.4			
Multiple Indicator Cluster Survey	MICS08	2008	5.0		47.1		11.9		18.4		0.0		5.8		54.1		19.8	

Mozambique - urban - Use of improved sanitation facilities



Mozambique - rural - Use of improved sanitation facilities



Sanitation

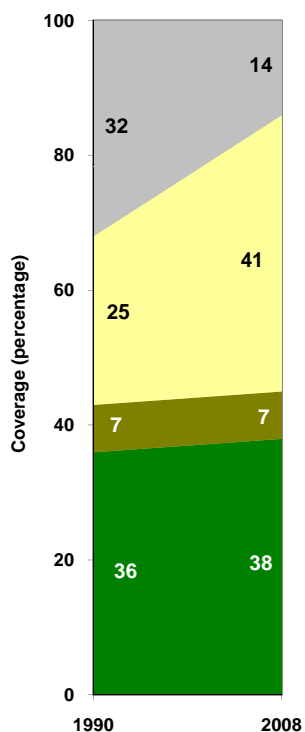
Mozambique	Sanitation coverage estimates					
	Urban (%)		Rural (%)		Total (%)	
	1990	2008	1990	2008	1990	2008
Improved facilities	36	38	4	4	11	17
Shared facilities	7	7	1	1	2	3
Unimproved facilities	25	41	21	36	22	38
Open defecation	32	14	74	59	65	42

Source: WHO/UNICEF JMP, 2010

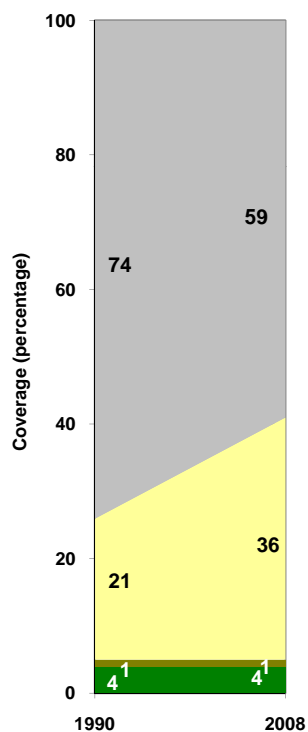
Mozambique	Urban		Rural		Total	
	1990	2008	1990	2008	1990	2008
Population (x1000)	2,857	8,249	10,686	14,133	13,543	22,383

Source: UN / Population Division, 2008

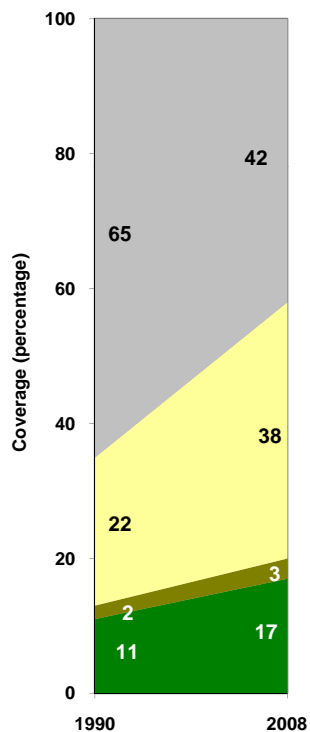
Urban sanitation trends



Rural sanitation trends



Total sanitation trends



■ Improved facilities
■ Shared facilities
■ Unimproved facilities
■ Open defecation

■ Improved facilities
■ Shared facilities
■ Unimproved facilities
■ Open defecation

■ Improved facilities
■ Shared facilities
■ Unimproved facilities
■ Open defecation