

WHO / UNICEF

Joint Monitoring Programme
for Water Supply and Sanitation

Estimates for the use of

**Improved Drinking-Water Sources
and Improved Sanitation Facilities**

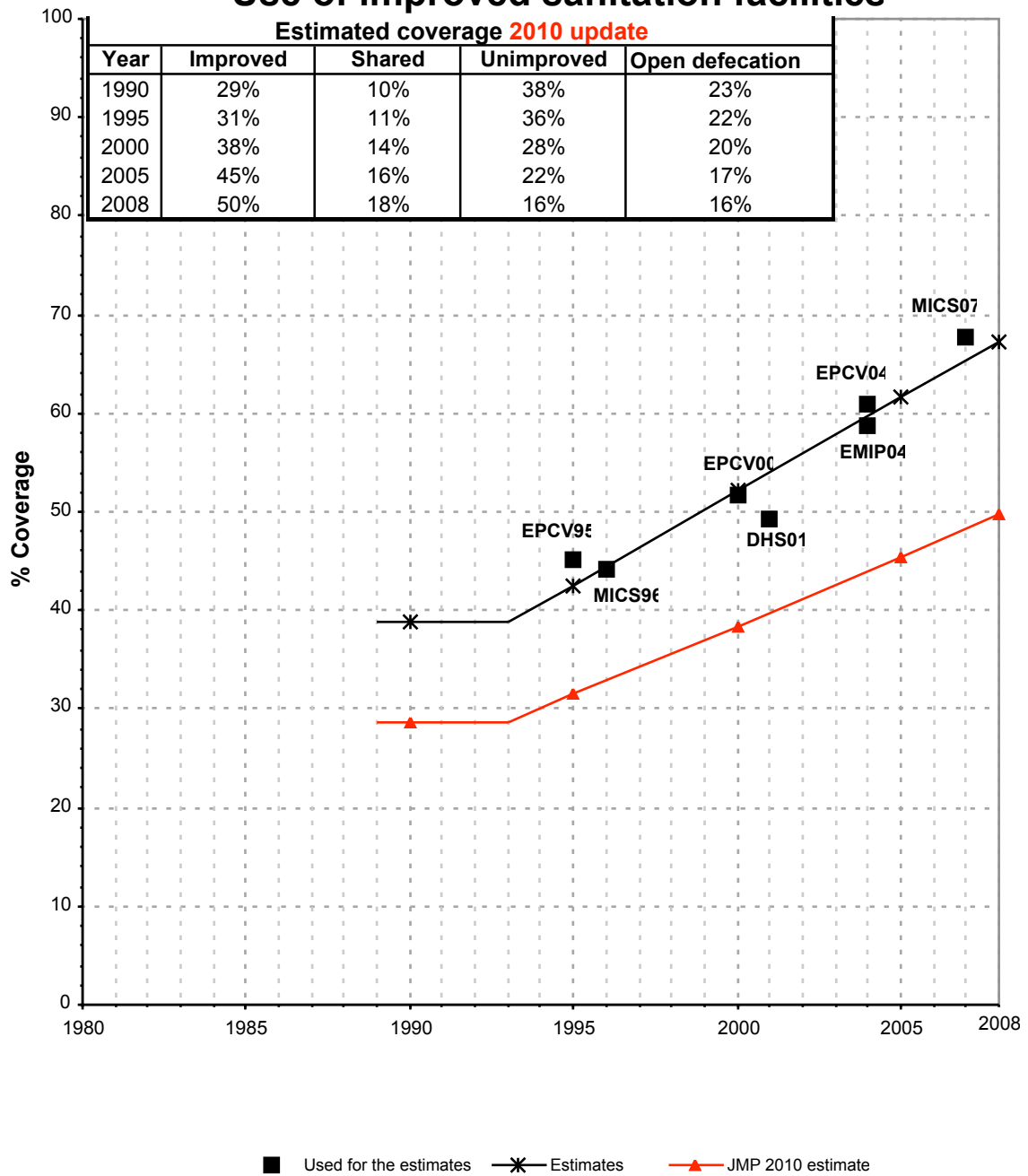
Updated March 2010

childinfo.org

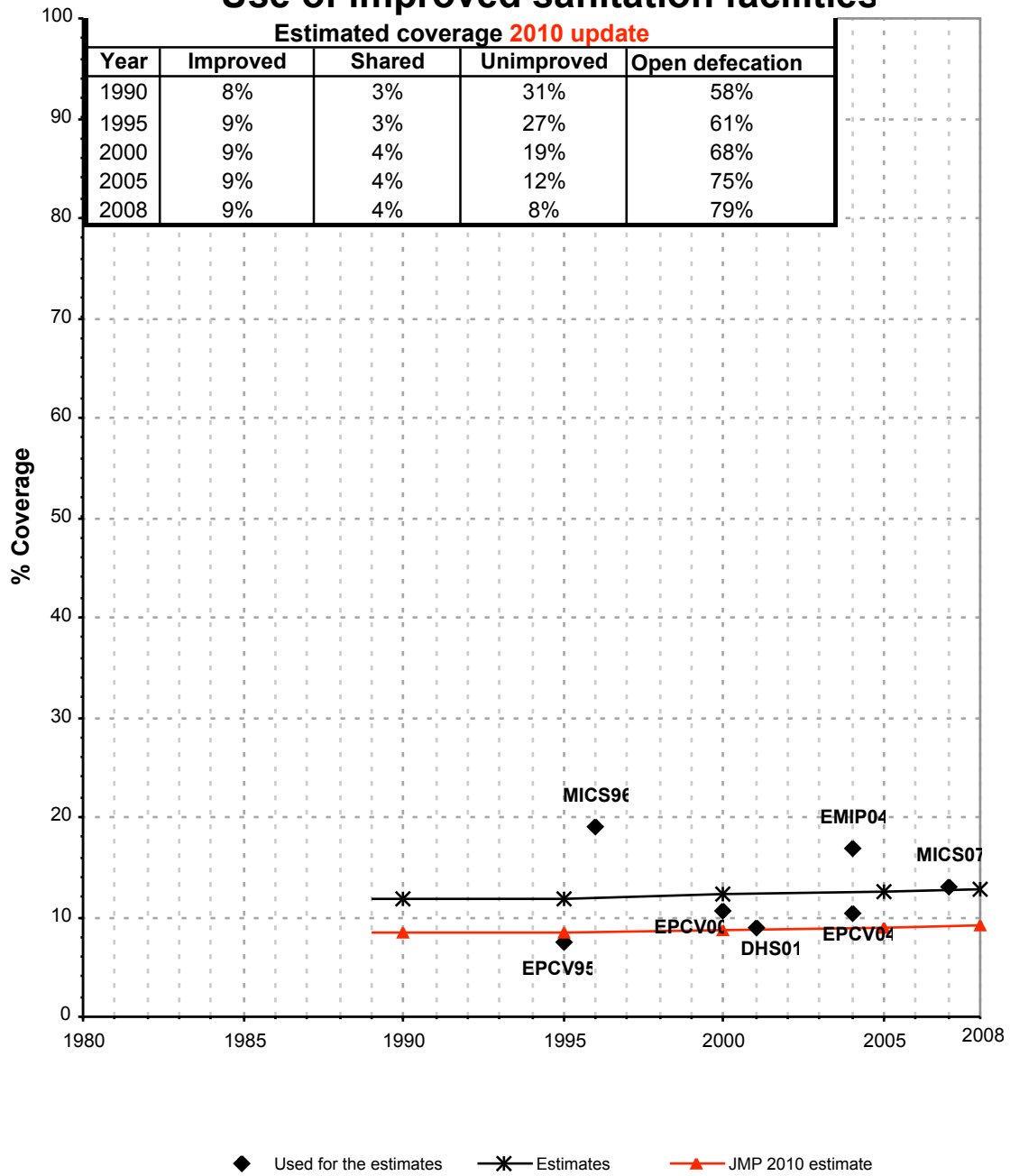
Use of sanitation facilities		JMP99			Mauritania			Use of sanitation facilities		DHS01			Mauritania		
Global Water Supply and Sanitation Assessment 2000.					Demographic and Health Survey										
Water Supply and Sanitation Sector Questionnaire - 1999. Form 6 sent to WHO.					1999					2001					
Original denomination	Classification	Urban	Rural	Total	Original denomination	Classification	Urban	Rural	Total						
Population served with household connections to conventional	Flush and pour flush to piped sewer system to septic tank to pit to unknown place/ not sure/DK to elsewhere	0.0	0.0			Flush and pour flush to piped sewer system to septic tank to pit to unknown place/ not sure/DK to elsewhere	72.2	0.5							
	Flush/toilets to piped sewer system to septic tank to pit to unknown place/ not sure/DK to elsewhere				Chasse d'eau avec évacuation:	Flush/toilets to piped sewer system to septic tank to pit to unknown place/ not sure/DK to elsewhere	4.1	0.1							
	Private flush/toilet to piped sewer system to septic tank to pit to unknown place/ not sure/DK to elsewhere					Private flush/toilet to piped sewer system to septic tank to pit to unknown place/ not sure/DK to elsewhere									
	Public/shared flush/toilet to piped sewer system to septic tank to pit to unknown place/ not sure/DK to elsewhere					Public/shared flush/toilet to piped sewer system to septic tank to pit to unknown place/ not sure/DK to elsewhere									
	Latrines					Latrines	72.1	25.6							
	Pour flush latrines to piped sewer system to septic tank to pit to unknown place/ not sure/DK to elsewhere				Latrines avec système d'évacuation:	Pour flush latrines to piped sewer system to septic tank to pit to unknown place/ not sure/DK to elsewhere	8.1	0.4							
	Private pour flush latrine to piped sewer system to septic tank to pit to unknown place/ not sure/DK to elsewhere					Private pour flush latrine to piped sewer system to septic tank to pit to unknown place/ not sure/DK to elsewhere									
	Public/shared pour flush latrine to piped sewer system to septic tank to pit to unknown place/ not sure/DK to elsewhere					Public/shared pour flush latrine to piped sewer system to septic tank to pit to unknown place/ not sure/DK to elsewhere									
	Dry latrines					Dry latrines	64.0	25.2							
	Improved latrines Vented Improved Pit latrine Pit latrine with slab/covered latrine Traditional latrine Pit latrine without slab/open pit Hanging toilet/hanging latrine Bucket latrine				Latrines sans système d'évacuation: Fosse/Latrines rudimentaires:	Improved latrines Vented Improved Pit latrine Pit latrine with slab/covered latrine Traditional latrine Pit latrine without slab/open pit Hanging toilet/hanging latrine Bucket latrine Other	33.1	3.8	21.4						
	Private Latrines Vented Improved Pit latrine Pit latrine with slab/covered latrine Traditional latrine Pit latrine without slab/open pit Hanging toilet/hanging latrine Bucket latrine					Private Latrines Vented Improved Pit latrine Pit latrine with slab/covered latrine Traditional latrine Pit latrine without slab/open pit Hanging toilet/hanging latrine Bucket latrine Other									
	Public/shared Latrines Vented Improved Pit latrine Pit latrine with slab/covered latrine Traditional latrine Pit latrine without slab/open pit Hanging toilet/hanging latrine Bucket latrine					Public/shared Latrines Vented Improved Pit latrine Pit latrine with slab/covered latrine Traditional latrine Pit latrine without slab/open pit Hanging toilet/hanging latrine Bucket latrine Other									
	Composting toilets Composting toilet (private) Composting toilet (shared)					Composting toilets Composting toilet (private) Composting toilet (shared)									
Population without household connections but served	Other improved Other	44.2	19.1			Other improved Other									
	No facility, bush, field				Pas de toilettes/ nature	No facility, bush, field	23.4	73.4							
Total population unserved	Other unimproved Other DK/missing information	55.8	80.9		Autre	Other unimproved Other	0.4	0.9							
	Total	100.0	100.0			DK/missing information Total	100.0	100.0							
Calculations															
Estimations						Improved latrines, based on average value of MICS96 and MICS07	37.1	8.5							
						SC, based on WHS03	3.6	0.1							
Access to improved plus shared sanitation:		44%	19%		Access to improved sanitation :		49%	9%							
Access to sewerage connections :					Access to sewerage connections :		4%	0%							
Used for the estimates :		No	No		Used for the estimates :		Yes	Yes							
Used for the estimates :		No	No		Used for the estimates :		Yes	Yes							
Ratios	Shared improved facilities/all improved facilities					Shared improved facilities/all improved facilities	11%	2%							
	Improved latrine / All latrines					Improved latrine / All latrines	46%	15%							
	Covered dry latrines / All dry latrines					Covered dry latrines / All dry latrines	57%	16%							
	VIP / All latrines					VIP / All latrines									
	Traditional latrines / All latrines					Traditional latrines / All latrines									
	Improved + traditional latrines / All latrines					Improved + traditional latrines / All latrines									
	Number of people covered by the survey:					Number of people covered by the survey:									
	Number of households covered by the survey:					Number of households covered by the survey:									
	Total population:	1206	1145			Total population:									
Comments					Comments										

Mauritania			SANITATION															
			URBAN								RURAL							
			Sewer connection		Total		Open defecation		Shared		Sewer connection		Total		Open defecation		Shared	
Source	Code	Year	Used	Not used	Used	Not used	Used	Not used	Used	Not used	Used	Not used	Used	Not used	Used	Not used	Used	Not used
Census	CEN95	1995		5.0		44.2						0.8		19.1				
Multiple Indicator Cluster Survey	MICS96	1996	5.0		44.2		23.0				0.8		19.1		48.6			
Global Water Supply and Sanitation Assessment 2000.	JMP99	1999			44.2								19.1					
Demographic and Health Survey	DHS01	2001	3.6		49.3		23.4				0.1		9.0		73.4			
World Health Survey	WHS03	2003		19.3		77.2		12.9		21.1		2.6		26.0		55.4		41.3
Enquête sur la Mortalité Infantile et le Paludisme	EMIP04	2004	5.2		58.7		17.9				0.6		16.8		75.2			
Enquête permanente sur les conditions de vie des ménages	EPCV92	1992																
Enquête permanente sur les conditions de vie des ménages	EPCV93	1993																
Enquête permanente sur les conditions de vie des ménages	EPCV95	1995			45.2		18.3						7.5		67.7			
Enquête permanente sur les conditions de vie des ménages	EPCV00	2000			51.8		19.9						10.7		73.8			
Enquête permanente sur les conditions de vie des ménages	EPCV04	2004			60.9		18.9						10.4		74.3			
Multiple Indicator Cluster Survey	MICS07	2007	2.3		67.6		12.6		26.1		0.1		13.0		72.8		28.7	

Mauritania - urban - Use of improved sanitation facilities



Mauritania - rural - Use of improved sanitation facilities



Sanitation

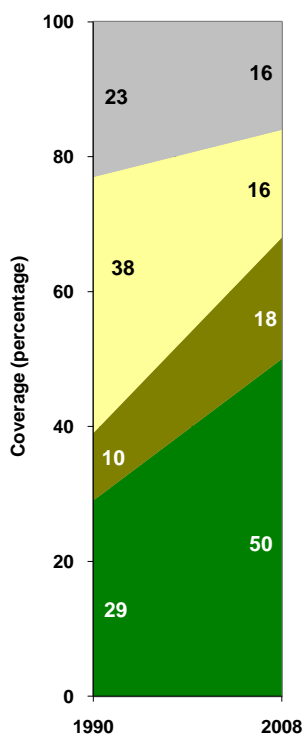
Mauritania	Sanitation coverage estimates					
	Urban (%)		Rural (%)		Total (%)	
	1990	2008	1990	2008	1990	2008
Improved facilities	29	50	8	9	16	26
Shared facilities	10	18	3	4	6	10
Unimproved facilities	38	16	31	8	34	11
Open defecation	23	16	58	79	44	53

Source: WHO/UNICEF JMP, 2010

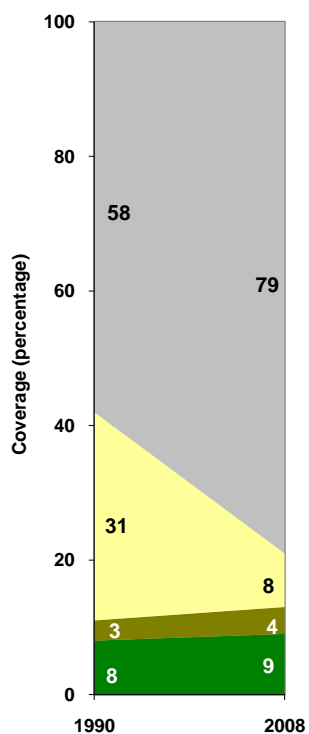
Mauritania	Urban		Rural		Total	
	1990	2008	1990	2008	1990	2008
Population (x1000)	789	1,316	1,199	1,899	1,988	3,215

Source: UN / Population Division, 2008

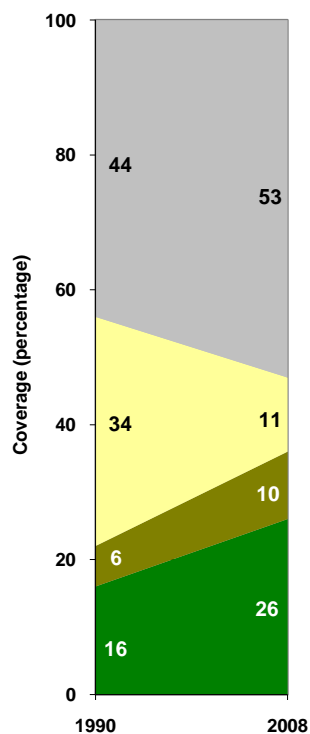
Urban sanitation trends



Rural sanitation trends



Total sanitation trends



■ Open defecation
■ Unimproved facilities
■ Shared facilities
■ Improved facilities

■ Open defecation
■ Unimproved facilities
■ Shared facilities
■ Improved facilities

■ Open defecation
■ Unimproved facilities
■ Shared facilities
■ Improved facilities