

WHO / UNICEF

Joint Monitoring Programme
for Water Supply and Sanitation

Estimates for the use of

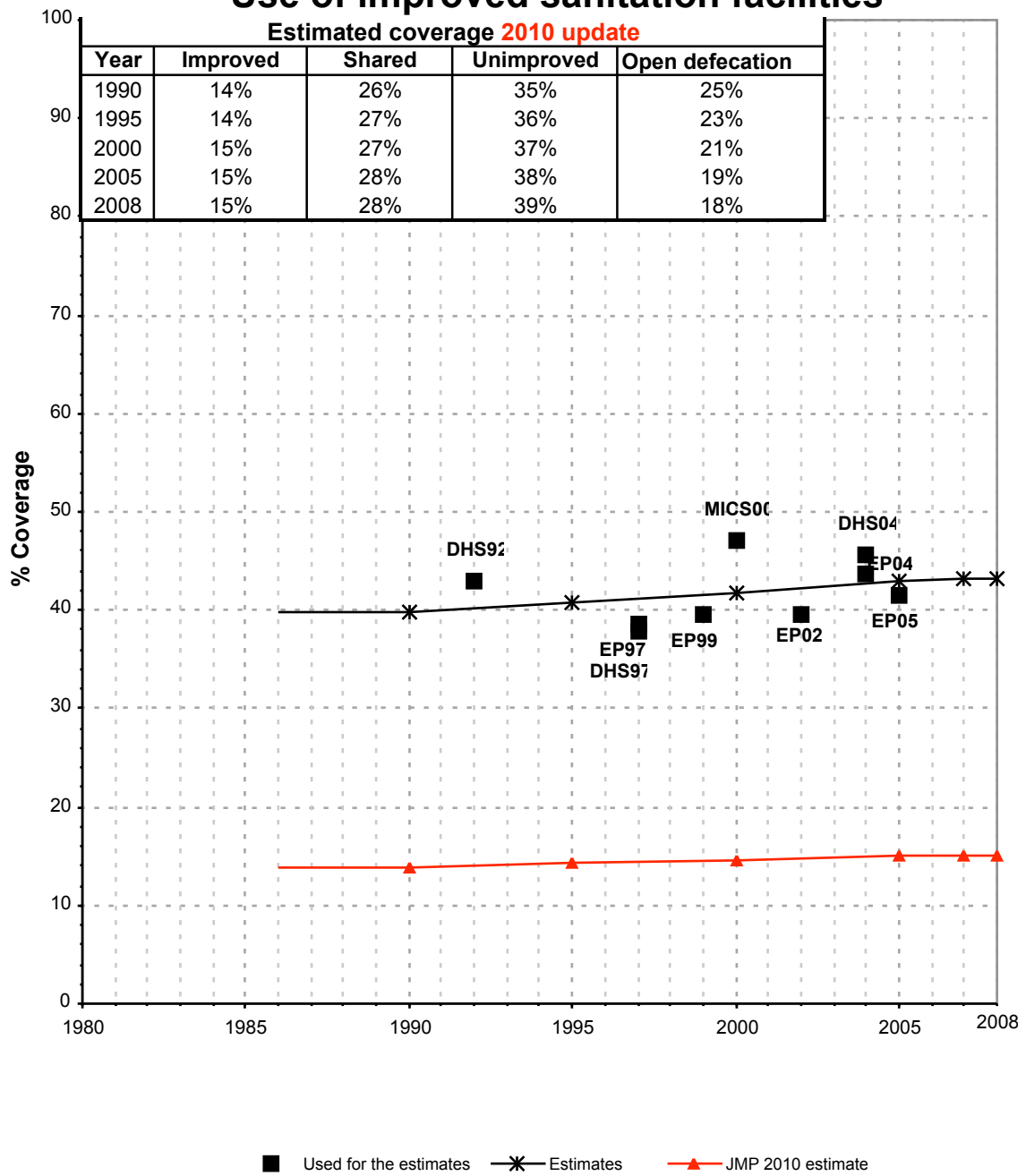
**Improved Drinking-Water Sources
and Improved Sanitation Facilities**

Updated March 2010

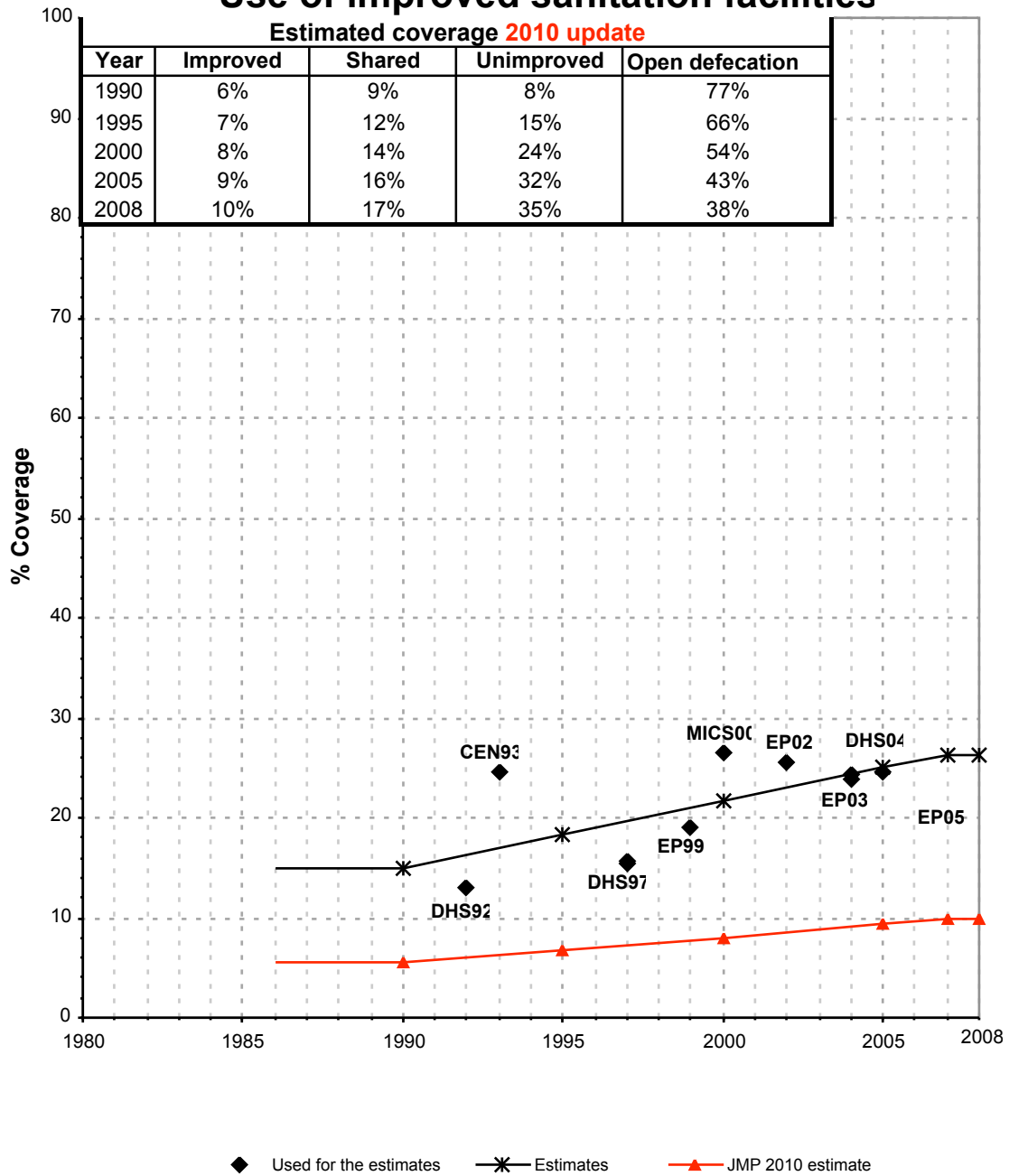
childinfo.org

Madagascar			SANITATION															
			URBAN								RURAL							
			Sewer connection		Total		Open defecation		Shared		Sewer connection		Total		Open defecation		Shared	
Source	Code	Year	Used	Not used	Used	Not used	Used	Not used	Used	Not used	Used	Not used	Used	Not used	Used	Not used	Used	Not used
Demographic and Household Survey	DHS92	1992	1.8		43.1		22.1				0.0		13.1		70.3			
National Census	CEN93	1993		12.3		59.8		36.8				1.1	24.5		73.2			
Multiple Indicator Cluster Survey	MICS95	1995																
Demographic and Household Survey	DHS97	1997	0.8		38.6		31.8				0.1		15.6		69.8			
Multiple Indicator Cluster Survey	MICS00	2000	1.0		47.0		17.2				0.1		26.5		47.6			
Demographic and Household Survey	DHS04	2004			45.7		19.1		65.1				24.3		52.5		62.8	
Enquête Prioritaire	EP99	1999			39.7		19.8						19.0		56.9			
Enquête auprès des Ménages	EM01	2001				34.2		11.5						22.7		25.9		
Enquête Prioritaire	EP97	1997			37.9		23.1						15.5		60.1			
Enquête Prioritaire	EP01	2001				38.1		18.1						24.7		28.1		
Enquête Prioritaire	EP02	2002			39.5		14.2						25.5		37.5			
Enquête Prioritaire	EP04	2004			43.8		18.9						23.9		46.2			
Enquête Prioritaire	EP05	2005			41.4		24.0						24.5		46.2			

Madagascar - urban - Use of improved sanitation facilities



Madagascar - rural - Use of improved sanitation facilities



Sanitation

Madagascar	Sanitation coverage estimates					
	Urban (%)		Rural (%)		Total (%)	
	1990	2008	1990	2008	1990	2008
Improved facilities	14	15	6	10	8	11
Shared facilities	26	28	9	17	13	20
Unimproved facilities	35	39	8	35	14	37
Open defecation	25	18	77	38	65	32

Source: WHO/UNICEF JMP, 2010

Madagascar	Urban		Rural		Total	
	1990	2008	1990	2008	1990	2008
Population (x1000)	2,657	5,631	8,616	13,480	11,273	19,111

Source: UN / Population Division, 2008

