

WHO / UNICEF

Joint Monitoring Programme
for Water Supply and Sanitation

Estimates for the use of

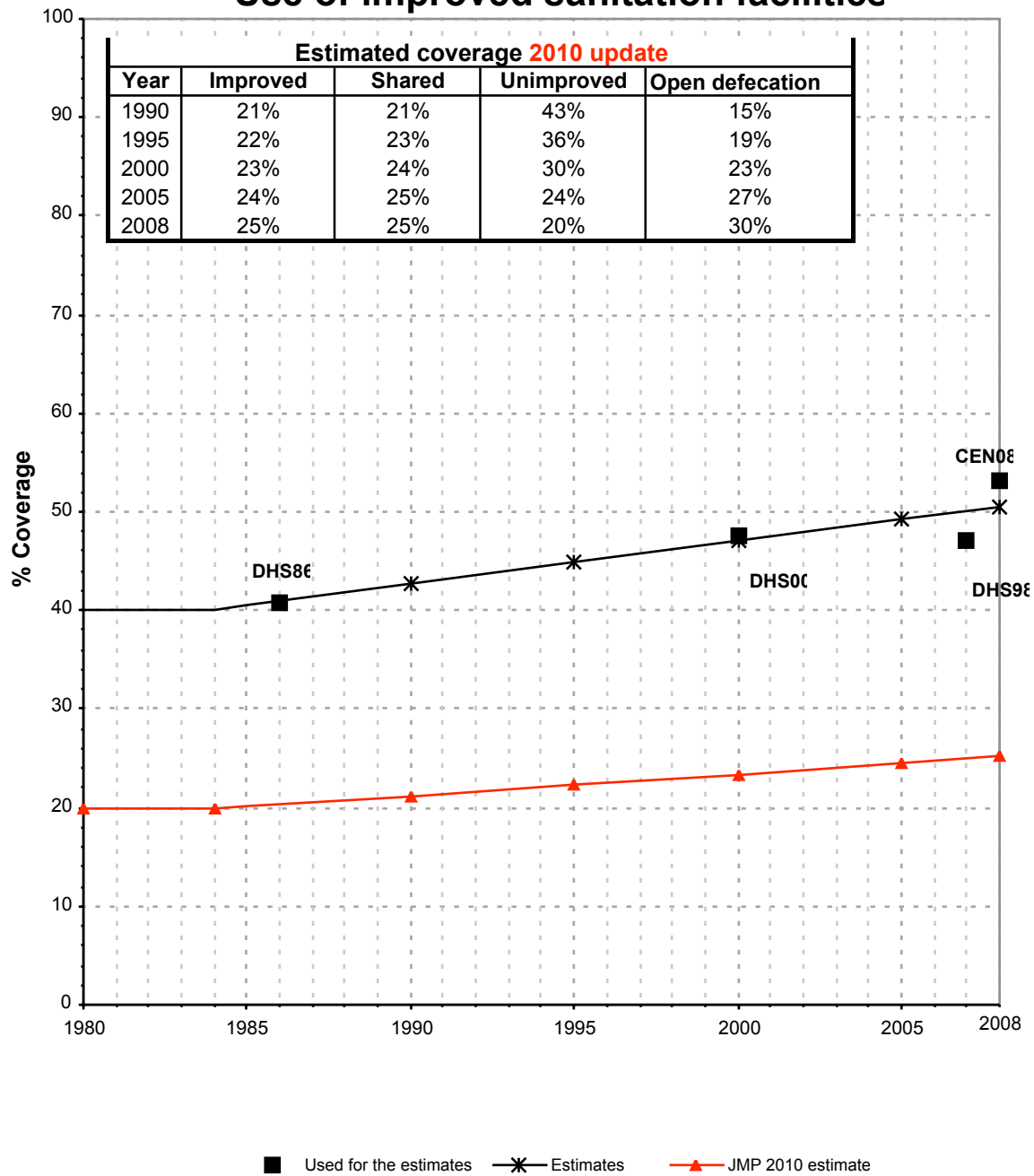
**Improved Drinking-Water Sources
and Improved Sanitation Facilities**

Updated March 2010

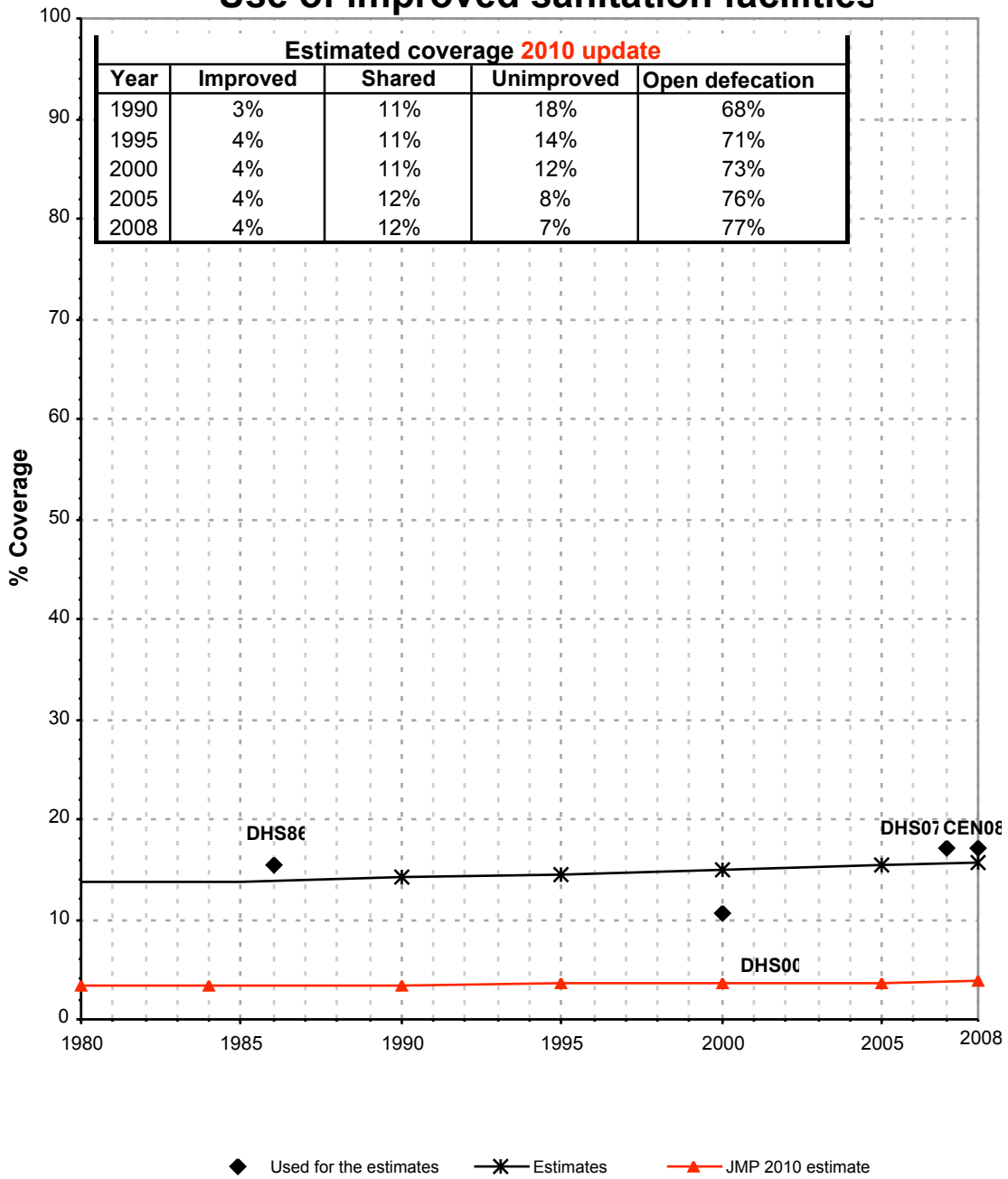
childinfo.org

Liberia			SANITATION																
			URBAN								RURAL								
			Sewer connection		Total		Open defecation		Shared		Sewer connection		Total		Open defecation		Shared		
Source	Code	Year	Used	Not used	Used	Not used	Used	Not used	Used	Not used	Used	Not used	Used	Not used	Used	Not used	Used	Not used	
Demographic and Health Survey	DHS86	1986			40.9		10.9						15.4		63.9				
Global Water Supply and Sanitation Assessment 2000.	JMP99	1999		11.1		70.2													
Demographic and Health Survey	DHS00	2000			47.6		24.4						10.5		81.2				
Demographic and Health Survey	DHS07	2007	7.5		47.1		28.3		50.3		0.6		17.1		70.6		75.9		
Liberia National Population and Housing Census 2008	CEN08	2008			53.2		29.5						17.0		77.9				

Liberia - urban - Use of improved sanitation facilities



Liberia - rural - Use of improved sanitation facilities



Sanitation

Liberia	Sanitation coverage estimates					
	Urban (%)		Rural (%)		Total (%)	
	1990	2008	1990	2008	1990	2008
Improved facilities	21	25	3	4	11	17
Shared facilities	21	25	11	12	16	20
Unimproved facilities	43	20	18	7	29	14
Open defecation	15	30	68	77	44	49

Source: WHO/UNICEF JMP, 2010

Liberia	Urban		Rural		Total	
	1990	2008	1990	2008	1990	2008
Population (x1000)	981	2,283	1,186	1,511	2,167	3,793

Source: UN / Population Division, 2008

