

WHO / UNICEF

Joint Monitoring Programme
for Water Supply and Sanitation

Estimates for the use of

**Improved Drinking-Water Sources
and Improved Sanitation Facilities**

Updated March 2010

childinfo.org

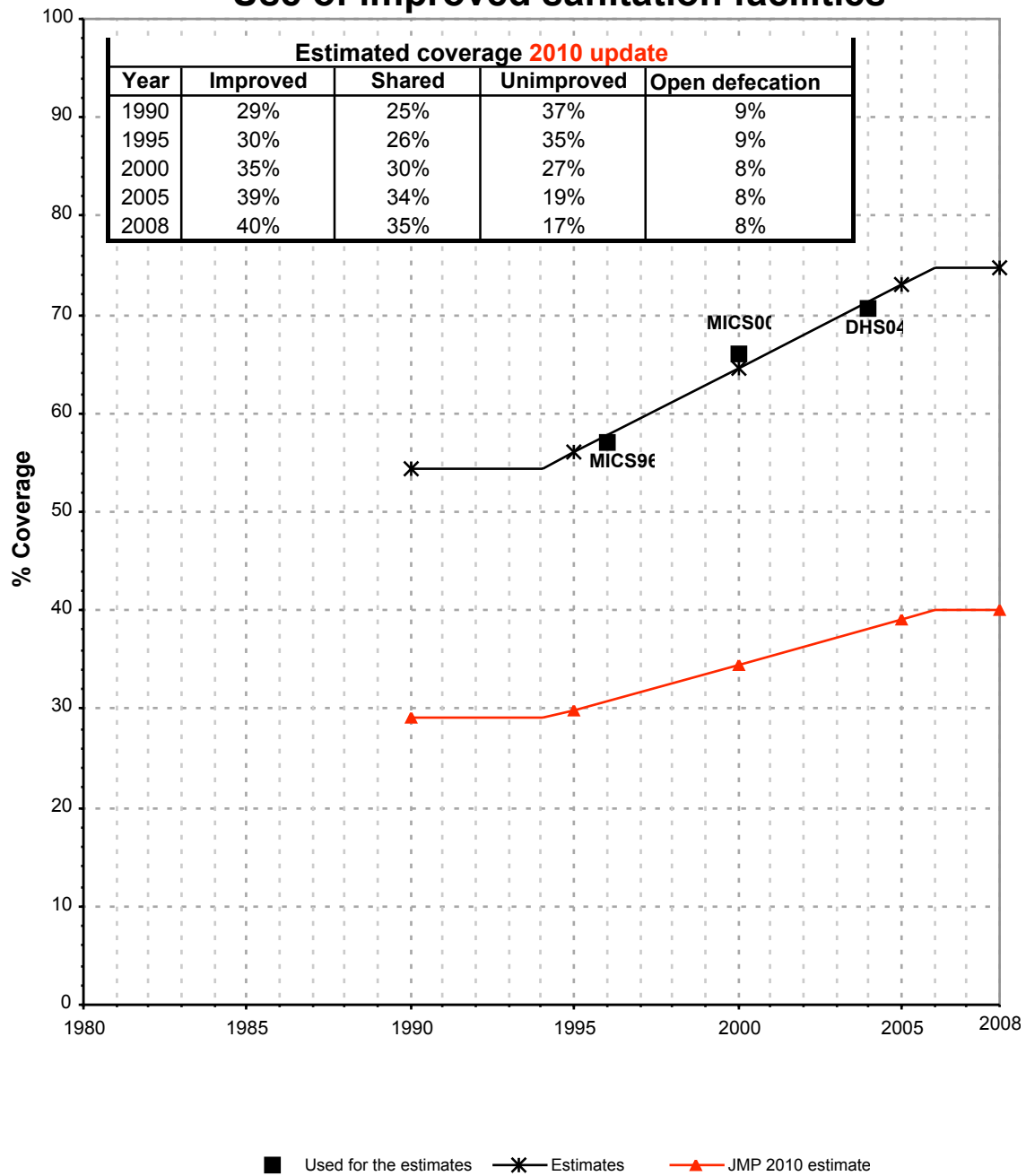
Use of sanitation facilities		MICS96			Lesotho			Use of sanitation facilities		JMP99			Lesotho		
Multiple Indicator Cluster Survey					1996			Global Water Supply and Sanitation Assessment 2000.					1999		
Water Supply and Sanitation Sector Questionnaire - 1999. Form 6 sent to WHO.								Water Supply and Sanitation Sector Questionnaire - 1999. Form 6 sent to WHO.							
Original denomination	Classification	Urban	Rural	Total	Original denomination	Classification	Urban	Rural	Total	Original denomination	Classification	Urban	Rural	Total	
	Flush and pour flush	10.0	2.0	4.0		Flush and pour flush	4.0				Flush and pour flush	4.0			
	to piped sewer system	8.0	0.0	2.0	Population served with household connections to conventional	to piped sewer system					to piped sewer system				
	to septic tank	2.0	2.0	2.0		to septic tank					to septic tank				
	to pit					to pit					to pit				
	to unknown place/ not sure/DK					to unknown place/ not sure/DK					to unknown place/ not sure/DK				
	to elsewhere					to elsewhere					to elsewhere				
	Flush/toilets	10.0	2.0	4.0		Flush/toilets					Flush/toilets				
Flush to sewage	to piped sewer system	8.0	0.0	2.0		to piped sewer system					to piped sewer system				
Flush to septic tank	to septic tank	2.0	2.0	2.0		to septic tank					to septic tank				
	to pit					to pit					to pit				
	to unknown place/ not sure/DK					to unknown place/ not sure/DK					to unknown place/ not sure/DK				
	to elsewhere					to elsewhere					to elsewhere				
	Private flush/toilet					Private flush/toilet					Private flush/toilet				
	to piped sewer system					to piped sewer system					to piped sewer system				
	to septic tank					to septic tank					to septic tank				
	to pit					to pit					to pit				
	to unknown place/ not sure/DK					to unknown place/ not sure/DK					to unknown place/ not sure/DK				
	to elsewhere					to elsewhere					to elsewhere				
	Public/shared flush/toilet					Public/shared flush/toilet					Public/shared flush/toilet				
	to piped sewer system					to piped sewer system					to piped sewer system				
	to septic tank					to septic tank					to septic tank				
	to pit					to pit					to pit				
	to unknown place/ not sure/DK					to unknown place/ not sure/DK					to unknown place/ not sure/DK				
	to elsewhere					to elsewhere					to elsewhere				
	Latrines	83.0	90.0	89.0		Latrines					Latrines				
Four flush latrine	Pour flush latrines	0.0	0.0	0.0		Pour flush latrines					Pour flush latrines				
	to piped sewer system					to piped sewer system					to piped sewer system				
	to septic tank					to septic tank					to septic tank				
	to pit					to pit					to pit				
	to unknown place/ not sure/DK					to unknown place/ not sure/DK					to unknown place/ not sure/DK				
	to elsewhere					to elsewhere					to elsewhere				
	Private pour flush latrine					Private pour flush latrine					Private pour flush latrine				
	to piped sewer system					to piped sewer system					to piped sewer system				
	to septic tank					to septic tank					to septic tank				
	to pit					to pit					to pit				
	to unknown place/ not sure/DK					to unknown place/ not sure/DK					to unknown place/ not sure/DK				
	to elsewhere					to elsewhere					to elsewhere				
	Public/shared pour flush latrine					Public/shared pour flush latrine					Public/shared pour flush latrine				
	to piped sewer system					to piped sewer system					to piped sewer system				
	to septic tank					to septic tank					to septic tank				
	to pit					to pit					to pit				
	to unknown place/ not sure/DK					to unknown place/ not sure/DK					to unknown place/ not sure/DK				
	to elsewhere					to elsewhere					to elsewhere				
	Dry latrines	83.0	90.0	89.0		Dry latrines					Dry latrines				
	Improved latrines	47.0	34.0	35.0		Improved latrines					Improved latrines				
VIP latrine	Ventilated Improved Pit latrine	47.0	34.0	35.0		Ventilated Improved Pit latrine					Ventilated Improved Pit latrine				
	Pit latrine with slab/covered latrine					Pit latrine with slab/covered latrine					Pit latrine with slab/covered latrine				
	Traditional latrine					Traditional latrine					Traditional latrine				
Ordinary pit latrine*	Pit latrine without slab/open pit	36.0	56.0	54.0		Pit latrine without slab/open pit					Pit latrine without slab/open pit				
	Hanging toilet/hanging latrine					Hanging toilet/hanging latrine					Hanging toilet/hanging latrine				
	Bucket latrine					Bucket latrine					Bucket latrine				
	Other					Other					Other				
	Private Latrines					Private Latrines					Private Latrines				
	Ventilated Improved Pit latrine					Ventilated Improved Pit latrine					Ventilated Improved Pit latrine				
	Pit latrine with slab/covered latrine					Pit latrine with slab/covered latrine					Pit latrine with slab/covered latrine				
	Traditional latrine					Traditional latrine					Traditional latrine				
	Pit latrine without slab/open pit					Pit latrine without slab/open pit					Pit latrine without slab/open pit				
	Hanging toilet/hanging latrine					Hanging toilet/hanging latrine					Hanging toilet/hanging latrine				
	Bucket latrine					Bucket latrine					Bucket latrine				
	Other					Other					Other				
	Public/shared Latrines					Public/shared Latrines					Public/shared Latrines				
	Ventilated Improved Pit latrine					Ventilated Improved Pit latrine					Ventilated Improved Pit latrine				
	Pit latrine with slab/covered latrine					Pit latrine with slab/covered latrine					Pit latrine with slab/covered latrine				
	Traditional latrine					Traditional latrine					Traditional latrine				
	Pit latrine without slab/open pit					Pit latrine without slab/open pit					Pit latrine without slab/open pit				
	Hanging toilet/hanging latrine					Hanging toilet/hanging latrine					Hanging toilet/hanging latrine				
	Bucket latrine					Bucket latrine					Bucket latrine				
	Other					Other					Other				
	Composting toilets					Composting toilets					Composting toilets				
	Composting toilet (private)					Composting toilet (private)					Composting toilet (private)				
	Composting toilet (shared)					Composting toilet (shared)					Composting toilet (shared)				
	Other improved				Population without household connections but served	Other improved	4.7				Other improved	4.7			
	Other					Other					Other				
	Other					Other					Other				
No facilities	No facility, bush, field	8.0	9.0	8.0	Total population unserved	No facility, bush, field					No facility, bush, field	91.1			
	Other unimproved					Other unimproved					Other unimproved				
	Other					Other					Other				
	Other					Other					Other				
	DK/missing information					DK/missing information					DK/missing information				
	Total	101.0	101.0	101.0		Total	99.8				Total	99.8			
Calculations						Calculations					Calculations				
Estimations						Estimations					Estimations				
	Access to improved sanitation :	57%	36%	39%		Access to improved plus shared sanitation:	9%				Access to improved plus shared sanitation:	9%			
	Access to sewerage connections :	8%	0%	2%		Access to sewerage connections :	4%				Access to sewerage connections :	4%			
	Used for the estimates	Yes	Yes			Used for the estimates	No	No			Used for the estimates	No	No		
	Used for the estimates	Yes	No			Used for the estimates	No	No			Used for the estimates	No	No		
Ratios	Shared improved facilities/all improved facilities	57%	38%	39%		Shared improved facilities/all improved facilities					Shared improved facilities/all improved facilities				
	Improved latrine / All latrines					Improved latrine / All latrines					Improved latrine / All latrines				
	Covered dry latrines / All dry latrines					Covered dry latrines / All dry latrines					Covered dry latrines / All dry latrines				
	VIP / All latrines					VIP / All latrines					VIP / All latrines				
	Traditional latrines / All latrines					Traditional latrines / All latrines					Traditional latrines / All latrines				
	Improved + traditional latrines / All latrines					Improved + traditional latrines / All latrines					Improved + traditional latrines / All latrines				
	Sewerage connection among flush/pour flush	80.0	0.0			Sewerage connection among flush/pour flush					Sewerage connection among flush/pour flush				
	Sewerage connection among flush	80.0	0.0			Sewerage connection among flush					Sewerage connection among flush				
	Number of people covered by the survey					Number of people covered by the survey					Number of people covered by the survey				
	Number of households covered by the survey					Number of households covered by the survey					Number of households covered by the survey				
	Total population					Total population	414.87				Total population	414.87			
Comments	*Identified as "inadequate" in the report					Comments					Comments				

Use of sanitation facilities		MICS00			Lesotho			Use of sanitation facilities		CWIQ02			Lesotho		
Multiple Indicator Cluster Survey					2000			Core Welfare Indicator Questionnaire Surveys					2002		
End decade MICS, draft preliminary report															
Original denomination	Classification	Urban	Rural	Total	Original denomination	Classification	Urban	Rural	Total						
	Flush and pour flush	7.0	0.5	7.9		Flush and pour flush			2.8						
	to piped sewer system					to piped sewer system			0.9						
	to septic tank					to septic tank			1.9						
	to pit					to pit									
	to unknown place/ not sure/DK					to unknown place/ not sure/DK									
	to elsewhere					to elsewhere									
Flush to sewage/septic tank	Flush/toilets	4.7	0.4	5.1	Flush to sewage Flush to septic tank	Flush/toilets			2.8						
	to piped sewer system					to piped sewer system			0.9						
	to septic tank					to septic tank			1.9						
	to pit					to pit									
	to unknown place/ not sure/DK					to unknown place/ not sure/DK									
	to elsewhere					to elsewhere									
	Private flush/toilet					Private flush/toilet									
	to piped sewer system					to piped sewer system									
	to septic tank					to septic tank									
	to pit					to pit									
	to unknown place/ not sure/DK					to unknown place/ not sure/DK									
	to elsewhere					to elsewhere									
	Public/shared flush/toilet					Public/shared flush/toilet									
	to piped sewer system					to piped sewer system									
	to septic tank					to septic tank									
	to pit					to pit									
	to unknown place/ not sure/DK					to unknown place/ not sure/DK									
	to elsewhere					to elsewhere									
	Latrines	84.4	46.8	131.2		Latrines			52.4						
Four flush latrine	Pour flush latrines	2.3	0.1	2.4		Pour flush latrines									
	to piped sewer system					to piped sewer system									
	to septic tank					to septic tank									
	to pit					to pit									
	to unknown place/ not sure/DK					to unknown place/ not sure/DK									
	to elsewhere					to elsewhere									
	Private pour flush latrine					Private pour flush latrine									
	to piped sewer system					to piped sewer system									
	to septic tank					to septic tank									
	to pit					to pit									
	to unknown place/ not sure/DK					to unknown place/ not sure/DK									
	to elsewhere					to elsewhere									
	Public/shared pour flush latrine					Public/shared pour flush latrine									
	to piped sewer system					to piped sewer system									
	to septic tank					to septic tank									
	to pit					to pit									
	to unknown place/ not sure/DK					to unknown place/ not sure/DK									
	to elsewhere					to elsewhere									
	Dry latrines	82.1	46.7	128.8		Dry latrines			52.4						
	Improved latrines	36.9	12.5	49.4		Improved latrines			44.8						
Improved pit latrine	Ventilated Improved Pit latrine	36.9	12.5	49.4	Improved pit latrine	Covered pit latrine			19.8						
	Pit latrine with slab/covered latrine					Pit latrine with slab/covered latrine			25.0						
Traditional pit latrine	Traditional latrine	44.0	31.2	75.2		Traditional latrine									
Open pit	Pit latrine without slab/open pit	1.2	3.0	4.2	Uncovered pit latrine	Pit latrine without slab/open pit			7.6						
	Hanging toilet/hanging latrine					Hanging toilet/hanging latrine									
Bucket	Bucket latrine	0.0	0.0	0.0	Bucket	Bucket latrine			0.0						
	Other					Other									
	Private Latrines					Private Latrines									
	Ventilated Improved Pit latrine					Ventilated Improved Pit latrine									
	Pit latrine with slab/covered latrine					Pit latrine with slab/covered latrine									
	Traditional latrine					Traditional latrine									
	Pit latrine without slab/open pit					Pit latrine without slab/open pit									
	Hanging toilet/hanging latrine					Hanging toilet/hanging latrine									
	Bucket latrine					Bucket latrine									
	Other					Other									
	Public/shared Latrines					Public/shared Latrines									
	Ventilated Improved Pit latrine					Ventilated Improved Pit latrine									
	Pit latrine with slab/covered latrine					Pit latrine with slab/covered latrine									
	Traditional latrine					Traditional latrine									
	Pit latrine without slab/open pit					Pit latrine without slab/open pit									
	Hanging toilet/hanging latrine					Hanging toilet/hanging latrine									
	Bucket latrine					Bucket latrine									
	Other					Other									
	Composting toilets					Composting toilets									
	Composting toilet (private)					Composting toilet (private)									
	Composting toilet (shared)					Composting toilet (shared)									
	Other improved					Other improved									
	Other					Other									
No facilities/bush/field	No facility, bush, field	10.2	48.4	58.6	No facilities/bush/field	No facility, bush, field			39.9						
	Other unimproved	0.7	4.4	5.1		Other unimproved			5.0						
	Other	0.7	4.4	5.1	Other	Other			5.0						
	DK/missing information					DK/missing information									
	Total	100.0	100.0	100.0		Total			100.1						
Calculations					Calculations										
Estimations	50% of traditional latrines considered improved	22.0	15.6		Estimations										
	Sewerage connections based on ratio MICS96	3.8	0.0												
Access to improved sanitation :		66%	29%		Access to improved sanitation :				48%						
Access to sewerage connections :		4%	0%		Access to sewerage connections :				1%						
Used for the estimates		Yes	Yes		Used for the estimates		No	No							
Used for the estimates		Yes	Yes		Used for the estimates		No	No							
Ratios	Shared improved facilities/all improved facilities	46%	27%	33%	Ratios	Shared improved facilities/all improved facilities			85%						
	Improved latrine / All latrines					Improved latrine / All latrines			77%						
	Covered dry latrines / All dry latrines					Covered dry latrines / All dry latrines									
	VIP / All latrines	45%	27%			VIP / All latrines									
	Traditional latrines / All latrines	52%	67%	62%		Traditional latrines / All latrines									
	Improved + traditional latrines / All latrines	99%	94%	95%		Improved + traditional latrines / All latrines									
	Sewerage connection among flush/pour flush					Sewerage connection among flush/pour flush									
	Sewerage connection among flush					Sewerage connection among flush									
	Number of people covered by the survey					Number of people covered by the survey									
	Number of households covered by the survey					Number of households covered by the survey									
	Total population					Total population									
Comments					Comments										

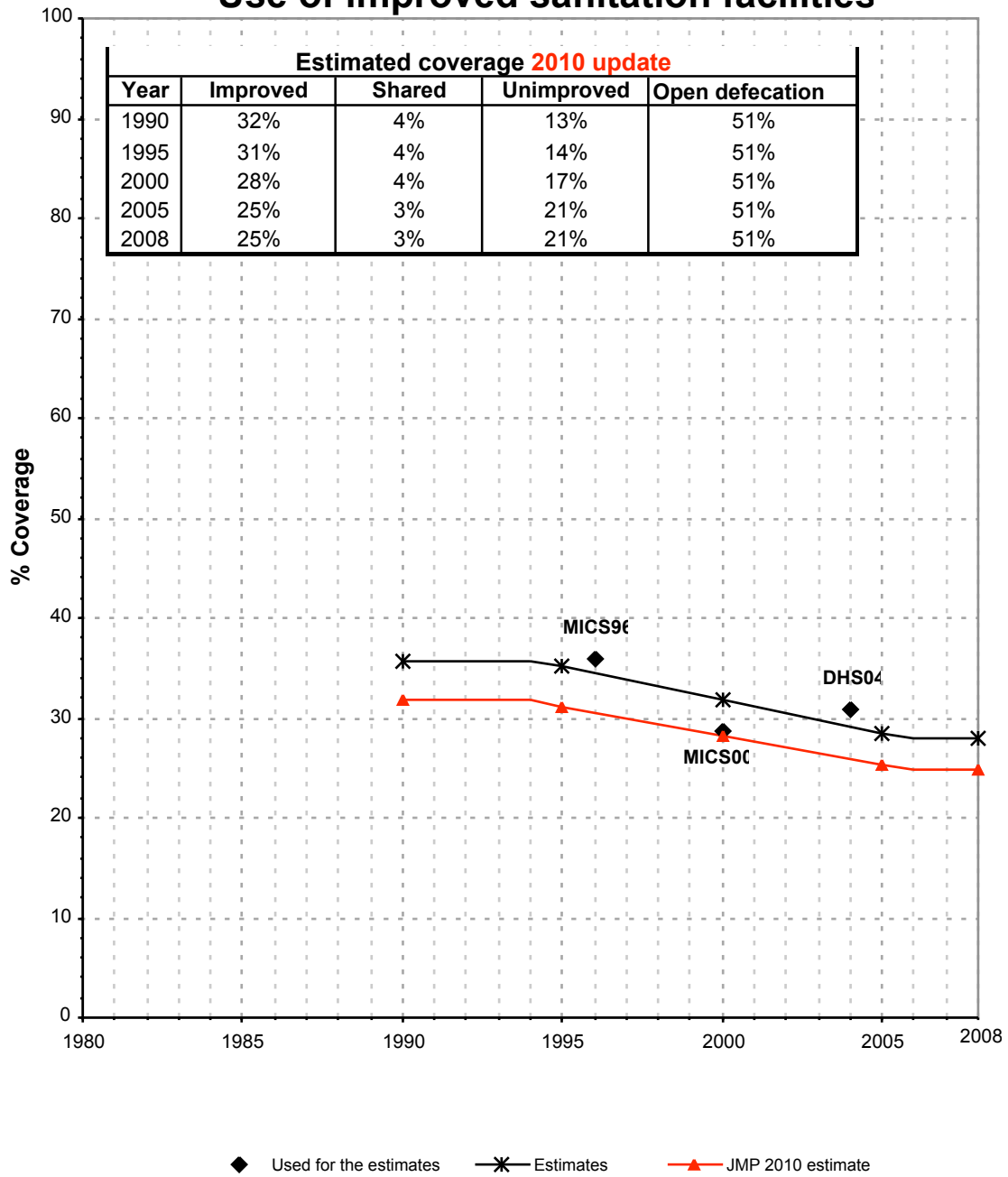
Use of sanitation facilities		DHS04		Lesotho		
Demographic and Health Survey				2004		
Original denomination	Classification	Urban	Rural	Total		
	Flush and pour flush	7.7	0.2	2.0		
	to piped sewer system					
	to septic tank					
	to pit					
	to unknown place/ not sure/DK					
	to elsewhere					
Flush toilet	Flush/toilets	7.7	0.2	2.0		
	to piped sewer system					
	to septic tank					
	to pit					
	to unknown place/ not sure/DK					
	to elsewhere					
	Private flush/toilet					
	to piped sewer system					
	to septic tank					
	to pit					
	to unknown place/ not sure/DK					
	to elsewhere					
	Public/shared flush/toilet					
	to piped sewer system					
	to septic tank					
	to pit					
	to unknown place/ not sure/DK					
	to elsewhere					
	Latrines	85.1	45.4	54.8		
	Pour flush latrines					
	to piped sewer system					
	to septic tank					
	to pit					
	to unknown place/ not sure/DK					
	to elsewhere					
	Private pour flush latrine					
	to piped sewer system					
	to septic tank					
	to pit					
	to unknown place/ not sure/DK					
	to elsewhere					
	Public/shared pour flush latrine					
	to piped sewer system					
	to septic tank					
	to pit					
	to unknown place/ not sure/DK					
	to elsewhere					
	Dry latrines	85.1	45.4	54.8		
	Improved latrines	40.7	15.7	21.6		
VIP latrine	Ventilated Improved Pit latrine	40.7	15.7	21.6		
	Pit latrine with slab/covered latrine					
Traditional pit toilet	Traditional latrine	44.4	29.7	33.2		
	Pit latrine without slab/open pit					
	Hanging toilet/hanging latrine					
	Bucket latrine					
	Other					
	Private Latrines					
	Ventilated Improved Pit latrine					
	Pit latrine with slab/covered latrine					
	Traditional latrine					
	Pit latrine without slab/open pit					
	Hanging toilet/hanging latrine					
	Bucket latrine					
	Other					
	Public/shared Latrines					
	Ventilated Improved Pit latrine					
	Pit latrine with slab/covered latrine					
	Traditional latrine					
	Pit latrine without slab/open pit					
	Hanging toilet/hanging latrine					
	Bucket latrine					
	Other					
	Composting toilets					
	Composting toilet (private)					
	Composting toilet (shared)					
	Other improved					
	Other					
No facilities/bush/field	No facility, bush, field	7.1	54.4	43.2		
	Other unimproved					
	Other					
	Other					
Other/missing	DK/missing information	0.1	0.1	0.1		
	Total	100.0	100.1	100.1		
Calculations						
Estimations	50% of traditional latrines considered improved	22.2	14.9			
	Sewerage connections based on ratio MICS96	6.2	0.0			
Access to improved sanitation :		71%	31%			
Access to sewerage connections :		6%	0%			
Used for the estimates :		Yes	Yes			
Used for the estimates :		Yes	Yes			
Ratios	Shared improved facilities/all improved facilities	46.5%	11.1%			
	Improved latrine / All latrines	48%	35%	39%		
	Covered dry latrines / All dry latrines					
	VIP / All latrines	48%	35%			
	Traditional latrines / All latrines	52%	65%	61%		
	Improved + traditional latrines / All latrines	100%	100%	100%		
	Sewerage connection among flush/pour flush					
Number of people covered by the survey:						
Number of households covered by the survey:						
Total population:						
Comments						

Lesotho			SANITATION															
			URBAN								RURAL							
			Sewer connection		Total		Open defecation		Shared		Sewer connection		Total		Open defecation		Shared	
Source	Code	Year	Used	Not used	Used	Not used	Used	Not used	Used	Not used	Used	Not used	Used	Not used	Used	Not used	Used	Not used
Multiple Indicator Cluster Survey	MICS96	1996	8.0		57.0		8.0					0.0	36.0			9.0		
Global Water Supply and Sanitation Assessment 2000.	JMP99	1999		4.0		8.7												
Multiple Indicator Cluster Survey	MICS00	2000	3.8		65.9		10.2				0.0		28.6		48.4			
Core Welfare Indicator Questionnaire Surveys	CWIQ02	2002																
Demographic and Health Survey	DHS04	2004	6.2		70.6		7.1		46.5		0.0		30.8		54.4		11.1	

Lesotho - urban - Use of improved sanitation facilities



Lesotho - rural - Use of improved sanitation facilities



Sanitation

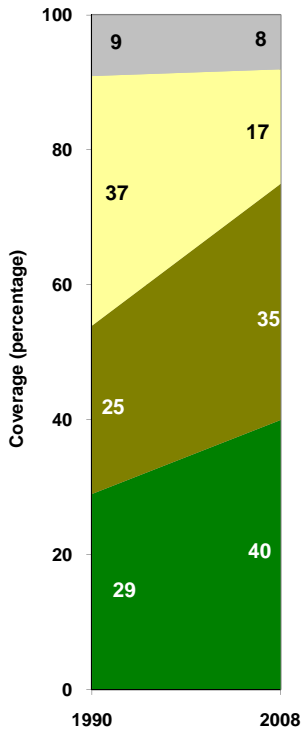
Lesotho	Sanitation coverage estimates					
	Urban (%)		Rural (%)		Total (%)	
	1990	2008	1990	2008	1990	2008
Improved facilities	29	40	32	25	32	29
Shared facilities	25	35	4	3	7	11
Unimproved facilities	37	17	13	21	16	20
Open defecation	9	8	51	51	45	40

Source: WHO/UNICEF JMP, 2010

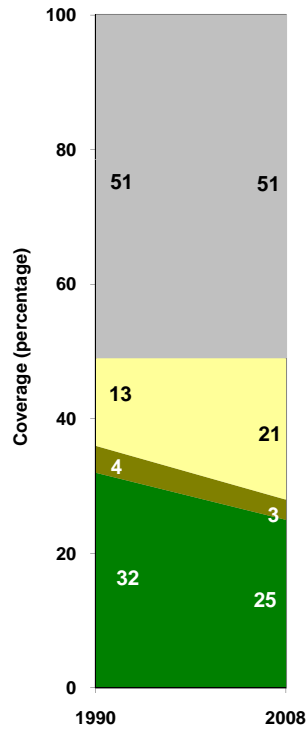
Lesotho	Urban		Rural		Total	
	1990	2008	1990	2008	1990	2008
Population (x1000)	224	521	1,379	1,529	1,602	2,049

Source: UN / Population Division, 2008

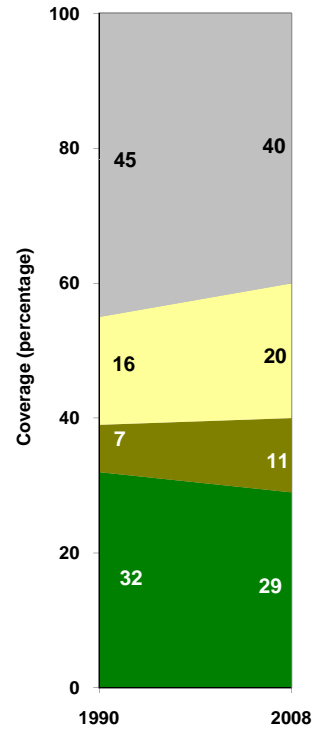
Urban sanitation trends



Rural sanitation trends



Total sanitation trends



■ Open defecation
 ■ Unimproved facilities
 ■ Shared facilities
 ■ Improved facilities

■ Open defecation
 ■ Unimproved facilities
 ■ Shared facilities
 ■ Improved facilities

■ Open defecation
 ■ Unimproved facilities
 ■ Shared facilities
 ■ Improved facilities