

**WHO / UNICEF**

**Joint Monitoring Programme**  
for Water Supply and Sanitation

Estimates for the use of

**Improved Drinking-Water Sources  
and Improved Sanitation Facilities**

Updated March 2010

[childinfo.org](http://childinfo.org)











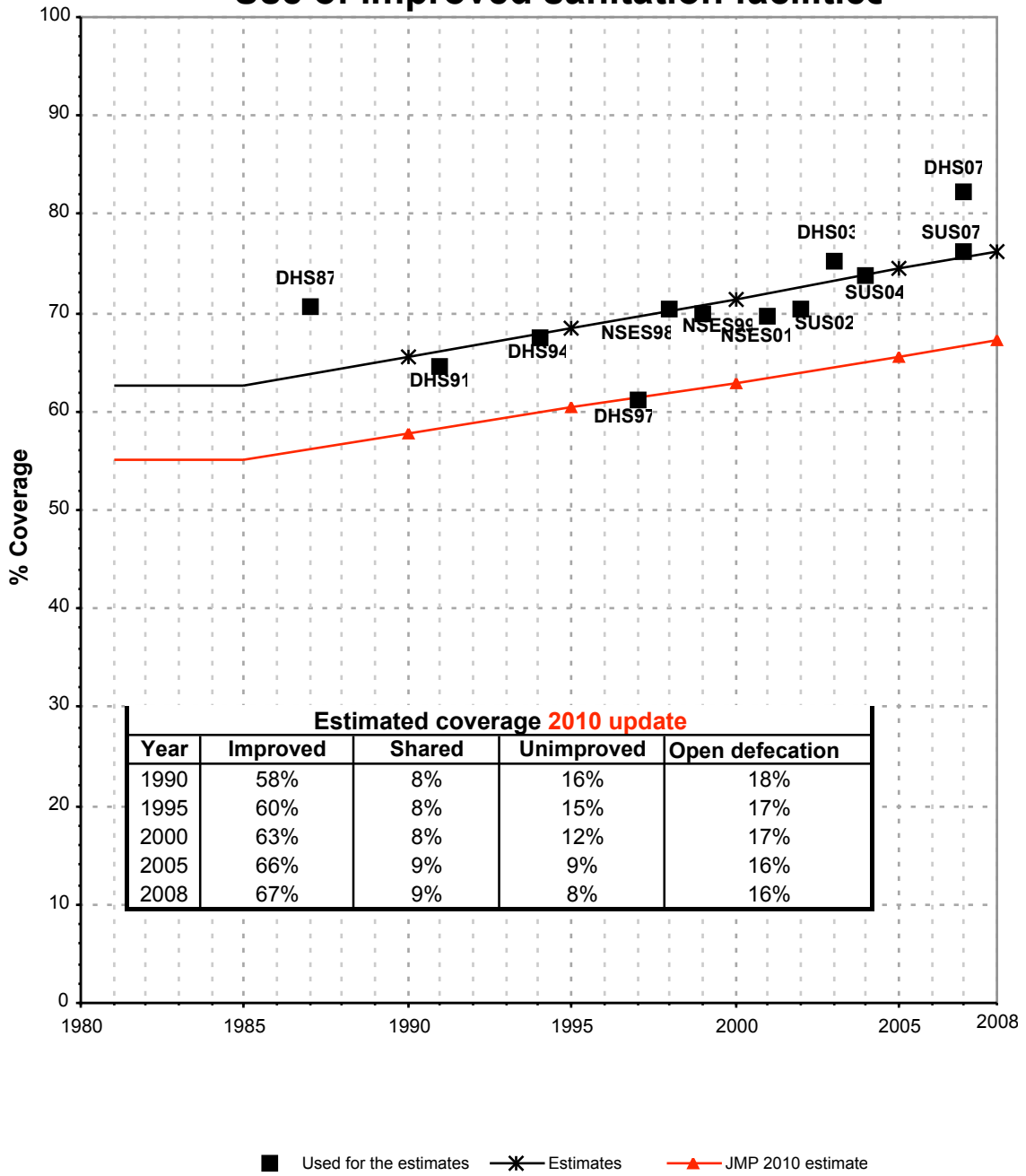




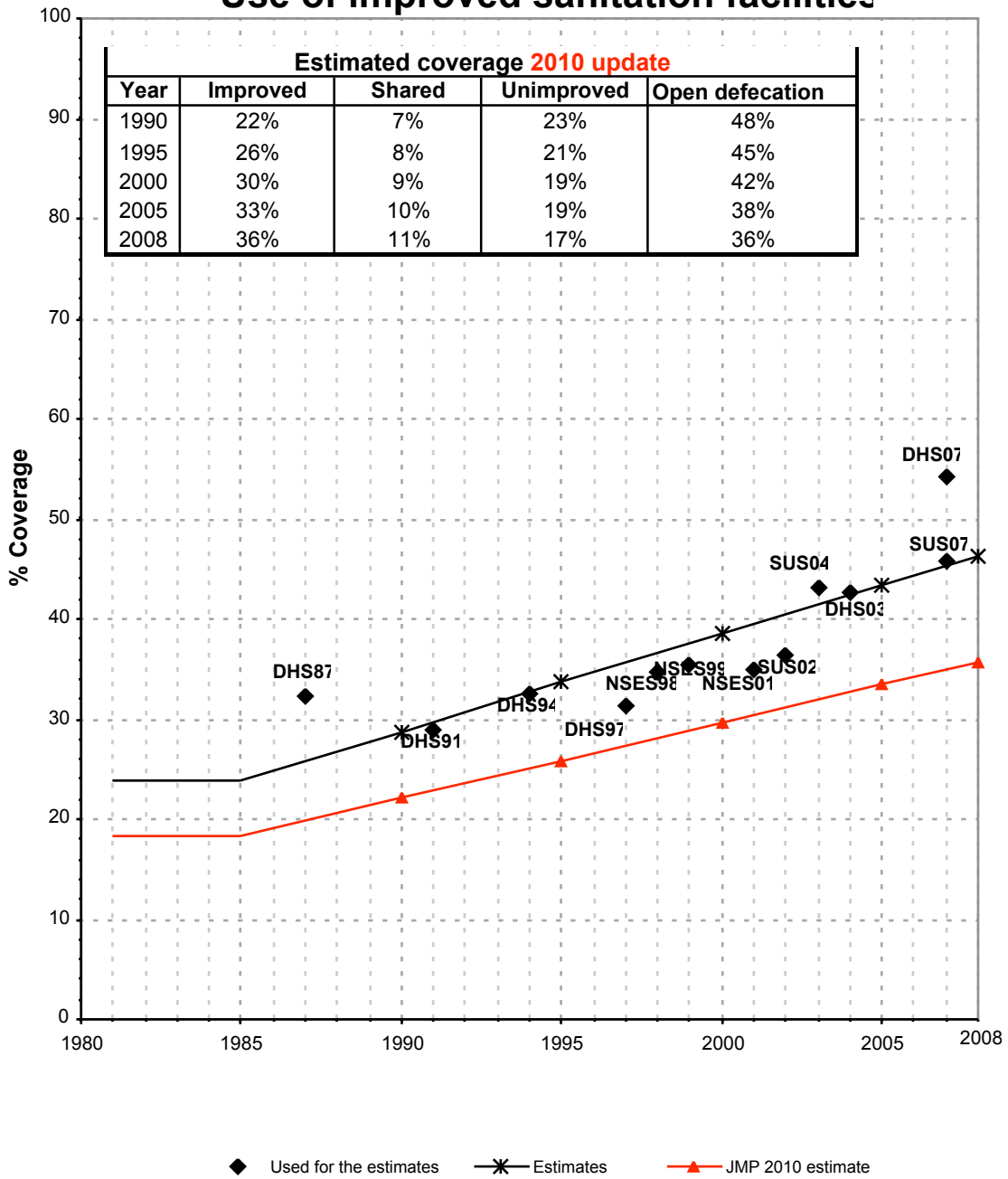


Indonesia			SANITATION															
			URBAN								RURAL							
			Sewer connection		Total		Open defecation		Shared		Sewer connection		Total		Open defecation		Shared	
Source	Code	Year	Used	Not used	Used	Not used	Used	Not used	Used	Not used	Used	Not used	Used	Not used	Used	Not used	Used	Not used
Demographic and Health Survey	DHS87	1987	0.0		70.7		17.5				0.0		32.3		53.3			
Demographic and Health Survey	DHS91	1991	0.0		64.6		19.3				0.0		29.0		40.6			
Demographic and Health Survey	DHS94	1994	0.0		67.6		16.2				0.0		32.5		43.5			
SUSENAS	SUS97	1997		0.0		67.4		9.6				0.0		43.7		34.3		
Demographic and Health Survey	DHS97	1997	0.0		61.1		14.1				0.0		31.3		43.4			
National Census	CEN98	1998		1.8		50.9						0.0		50.0				
National Socio-Economic Survey	NSES98	1998	0.0		70.4		14.1				0.0		34.8		45.5			
National Socio-Economic Survey	NSES99	1999	0.0		70.0		21.0				0.0		35.5		45.2			
Global Water Supply and Sanitation Assessment 2000.	JMP99	1999		1.6		86.6						0.0		46.1				
National Socio-Economic Survey	NSES01	2001	0.0		69.6		22.1				0.0		35.0		45.3			
SUSENAS	SUS02	2002	0.0		70.3		21.3				0.0		36.4		44.8			
Demographic and Health Survey	DHS03	2003	0.0		75.2		11.8		11.0		0.0		43.1		33.7		12.1	
SUSENAS	SUS04	2004	0.0		73.7		17.4				0.0		42.6		39.6			
SOCIO-ECONOMIC SURVEY (SUSENAS)	SUS03	2003																
SUSENAS	SUS07	2007			76.2		17.5						45.9		38.9			
Demographic and Health Survey	DHS07	2007			82.3		10.7		12.7				54.3		32.2		33.9	

# Indonesia - urban - Use of improved sanitation facilities



# Indonesia - rural - Use of improved sanitation facilities



# Sanitation

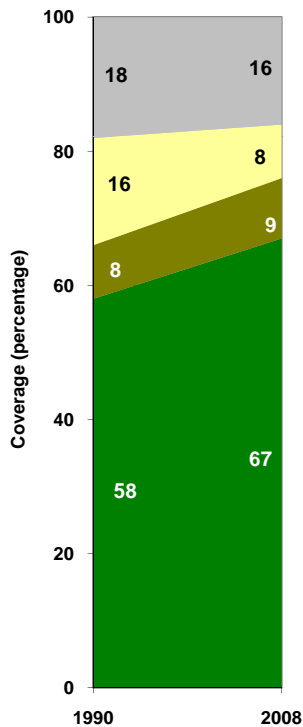
Indonesia	Sanitation coverage estimates					
	Urban (%)		Rural (%)		Total (%)	
	1990	2008	1990	2008	1990	2008
Improved facilities	58	67	22	36	33	52
Shared facilities	8	9	7	11	7	10
Unimproved facilities	16	8	23	17	21	12
Open defecation	18	16	48	36	39	26

Source: WHO/UNICEF JMP, 2010

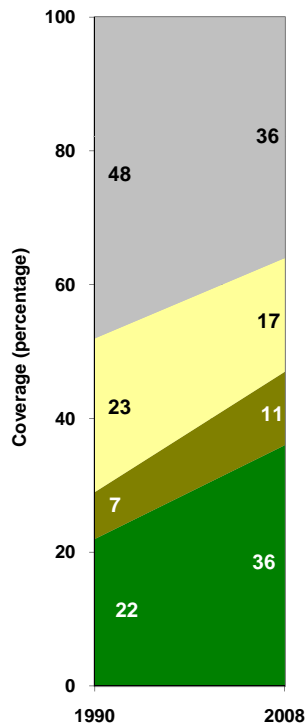
Indonesia	Urban		Rural		Total	
	1990	2008	1990	2008	1990	2008
Population (x1000)	54,251	117,196	123,134	110,149	177,385	227,345

Source: UN / Population Division, 2008

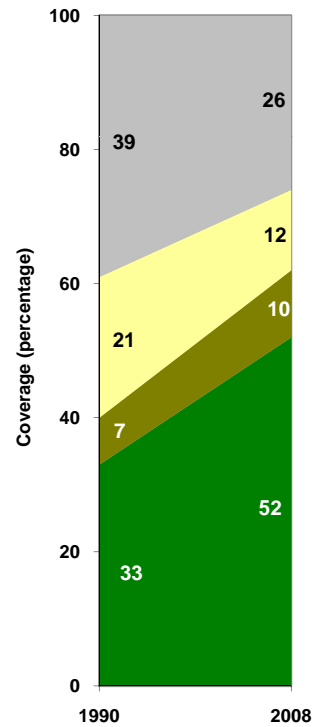
Urban sanitation trends



Rural sanitation trends



Total sanitation trends



- Open defecation
- Unimproved facilities
- Shared facilities
- Improved facilities

- Open defecation
- Unimproved facilities
- Shared facilities
- Improved facilities

- Open defecation
- Unimproved facilities
- Shared facilities
- Improved facilities