

WHO / UNICEF

Joint Monitoring Programme
for Water Supply and Sanitation

Estimates for the use of

**Improved Drinking-Water Sources
and Improved Sanitation Facilities**

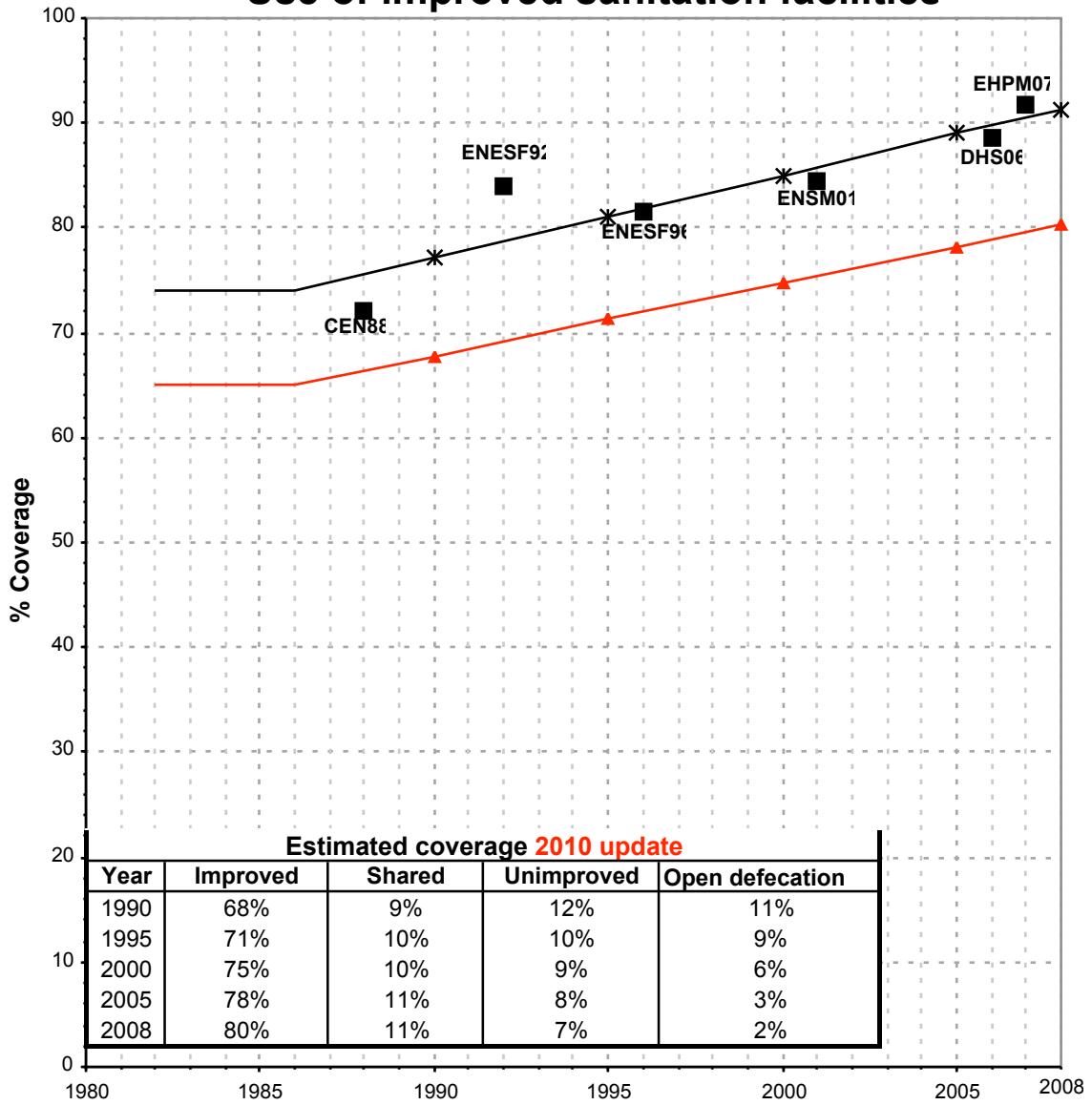
Updated March 2010

childinfo.org

| Use of sanitation facilities | | ENESF96 | | | Honduras | | | Use of sanitation facilities | | ENSM01 | | | Honduras | | |
|---|--|---------|-------|-------|--|--|-------|------------------------------|-------|--------|--|--|----------|--|--|
| Encuesta Nacional de Epidemiología Y Salud Familiar | | | | | Encuesta Nacional de Salud Masculina | | | | | | | | | | |
| | | | | | 1996 | | | | | 2001 | | | | | |
| Original denomination | Classification | Urban | Rural | Total | Original denomination | Classification | Urban | Rural | Total | | | | | | |
| | Flush and pour flush | 59.0 | 7.5 | | | Flush and pour flush | 61.7 | 9.9 | | | | | | | |
| | to piped sewer system | | | | | to piped sewer system | | | | | | | | | |
| | to septic tank | | | | | to septic tank | | | | | | | | | |
| | to pit | | | | | to pit | | | | | | | | | |
| | to unknown place/ not sure/DK | | | | | to unknown place/ not sure/DK | | | | | | | | | |
| | to elsewhere | | | | | to elsewhere | | | | | | | | | |
| Indoro | Flush/toilets | 59.0 | 7.5 | | Indoro | Flush/toilets | 61.7 | 9.9 | | | | | | | |
| | to piped sewer system | | | | | to piped sewer system | | | | | | | | | |
| | to septic tank | | | | | to septic tank | | | | | | | | | |
| | to pit | | | | | to pit | | | | | | | | | |
| | to unknown place/ not sure/DK | | | | | to unknown place/ not sure/DK | | | | | | | | | |
| | to elsewhere | | | | | to elsewhere | | | | | | | | | |
| | Private flush/toilet | | | | | Private flush/toilet | | | | | | | | | |
| | to piped sewer system | | | | | to piped sewer system | | | | | | | | | |
| | to septic tank | | | | | to septic tank | | | | | | | | | |
| | to pit | | | | | to pit | | | | | | | | | |
| | to unknown place/ not sure/DK | | | | | to unknown place/ not sure/DK | | | | | | | | | |
| | to elsewhere | | | | | to elsewhere | | | | | | | | | |
| | Public/shared flush/toilet | | | | | Public/shared flush/toilet | | | | | | | | | |
| | to piped sewer system | | | | | to piped sewer system | | | | | | | | | |
| | to septic tank | | | | | to septic tank | | | | | | | | | |
| | to pit | | | | | to pit | | | | | | | | | |
| | to unknown place/ not sure/DK | | | | | to unknown place/ not sure/DK | | | | | | | | | |
| | to elsewhere | | | | | to elsewhere | | | | | | | | | |
| | Latrines | 34.8 | 49.5 | | | Latrines | 33.0 | 52.2 | | | | | | | |
| | Pour flush latrines | | | | | Pour flush latrines | | | | | | | | | |
| | to piped sewer system | | | | | to piped sewer system | | | | | | | | | |
| | to septic tank | | | | | to septic tank | | | | | | | | | |
| | to pit | | | | | to pit | | | | | | | | | |
| | to unknown place/ not sure/DK | | | | | to unknown place/ not sure/DK | | | | | | | | | |
| | to elsewhere | | | | | to elsewhere | | | | | | | | | |
| | Private pour flush latrine | | | | | Private pour flush latrine | | | | | | | | | |
| | to piped sewer system | | | | | to piped sewer system | | | | | | | | | |
| | to septic tank | | | | | to septic tank | | | | | | | | | |
| | to pit | | | | | to pit | | | | | | | | | |
| | to unknown place/ not sure/DK | | | | | to unknown place/ not sure/DK | | | | | | | | | |
| | to elsewhere | | | | | to elsewhere | | | | | | | | | |
| | Public/shared pour flush latrine | | | | | Public/shared pour flush latrine | | | | | | | | | |
| | to piped sewer system | | | | | to piped sewer system | | | | | | | | | |
| | to septic tank | | | | | to septic tank | | | | | | | | | |
| | to pit | | | | | to pit | | | | | | | | | |
| | to unknown place/ not sure/DK | | | | | to unknown place/ not sure/DK | | | | | | | | | |
| | to elsewhere | | | | | to elsewhere | | | | | | | | | |
| | Dry latrines | 34.8 | 49.5 | | | Dry latrines | 33.0 | 52.2 | | | | | | | |
| | Improved latrines | 10.2 | 19.3 | | | Improved latrines | 12.5 | 27.4 | | | | | | | |
| | Ventilated Improved Pit latrine | | | | | Ventilated Improved Pit latrine | | | | | | | | | |
| Letrina hidraulica | Pit latrine with slab/covered latrine | 10.2 | 19.3 | | Letrina hidraulica | Pit latrine with slab/covered latrine | 12.5 | 27.4 | | | | | | | |
| Letrina simple | Traditional latrine | 24.7 | 30.2 | | Letrina simple | Traditional latrine | 20.5 | 24.8 | | | | | | | |
| | Pit latrine without slab/open pit | | | | | Pit latrine without slab/open pit | | | | | | | | | |
| | Hanging toilet/hanging latrine | | | | | Hanging toilet/hanging latrine | | | | | | | | | |
| | Bucket latrine | | | | | Bucket latrine | | | | | | | | | |
| | Other | | | | | Other | | | | | | | | | |
| | Private Latrines | | | | | Private Latrines | | | | | | | | | |
| | Ventilated Improved Pit latrine | | | | | Ventilated Improved Pit latrine | | | | | | | | | |
| | Pit latrine with slab/covered latrine | | | | | Pit latrine with slab/covered latrine | | | | | | | | | |
| | Traditional latrine | | | | | Traditional latrine | | | | | | | | | |
| | Pit latrine without slab/open pit | | | | | Pit latrine without slab/open pit | | | | | | | | | |
| | Hanging toilet/hanging latrine | | | | | Hanging toilet/hanging latrine | | | | | | | | | |
| | Bucket latrine | | | | | Bucket latrine | | | | | | | | | |
| | Other | | | | | Other | | | | | | | | | |
| | Public/shared Latrines | | | | | Public/shared Latrines | | | | | | | | | |
| | Ventilated Improved Pit latrine | | | | | Ventilated Improved Pit latrine | | | | | | | | | |
| | Pit latrine with slab/covered latrine | | | | | Pit latrine with slab/covered latrine | | | | | | | | | |
| | Traditional latrine | | | | | Traditional latrine | | | | | | | | | |
| | Pit latrine without slab/open pit | | | | | Pit latrine without slab/open pit | | | | | | | | | |
| | Hanging toilet/hanging latrine | | | | | Hanging toilet/hanging latrine | | | | | | | | | |
| | Bucket latrine | | | | | Bucket latrine | | | | | | | | | |
| | Other | | | | | Other | | | | | | | | | |
| | Composting toilets | | | | | Composting toilets | | | | | | | | | |
| | Composting toilet (private) | | | | | Composting toilet (private) | | | | | | | | | |
| | Composting toilet (shared) | | | | | Composting toilet (shared) | | | | | | | | | |
| | Other improved | | | | | Other improved | | | | | | | | | |
| | Other | | | | | Other | | | | | | | | | |
| | Other | | | | | Other | | | | | | | | | |
| No tiene/al aire libre | No facility, bush, field | 5.8 | 42.8 | | No tiene/al aire libre | No facility, bush, field | 4.9 | 37.4 | | | | | | | |
| Otro | Other unimproved | 0.4 | 0.2 | | Otro | Other unimproved | 0.4 | 0.5 | | | | | | | |
| | Other | 0.4 | 0.2 | | | Other | 0.4 | 0.5 | | | | | | | |
| | Other | | | | | Other | | | | | | | | | |
| | DK/missing information | | | | | DK/missing information | | | | | | | | | |
| | Total | 100.0 | 100.0 | | | Total | 100.0 | 100.0 | | | | | | | |
| Calculations | | | | | Calculations | | | | | | | | | | |
| | 50% of traditional latrines considered improved | 12.3 | 15.1 | | | 50% of traditional latrines considered improved | 10.3 | 12.4 | | | | | | | |
| Estimations | | | | | Estimations | | | | | | | | | | |
| | Sewerage connections based on ratio DHS06 | 47.1 | 1.1 | | | Sewerage connections based on ratio DHS06 | 49.3 | 1.4 | | | | | | | |
| Access to improved sanitation : 81% 42% | | | | | Access to improved sanitation : 84% 50% | | | | | | | | | | |
| Access to sewerage connections : 47% 1% | | | | | Access to sewerage connections : 49% 1% | | | | | | | | | | |
| Used for the estimates Yes Yes | | | | | Used for the estimates Yes Yes | | | | | | | | | | |
| Ratios | Shared improved facilities/all improved facilities | | | | | Shared improved facilities/all improved facilities | | | | | | | | | |
| | Improved latrine / All latrines | 29% | 39% | | | Improved latrine / All latrines | 38% | 52% | | | | | | | |
| | Covered dry latrines / All dry latrines | 29% | 39% | | | Covered dry latrines / All dry latrines | 38% | 52% | | | | | | | |
| | VIP / All latrines | | | | | VIP / All latrines | | | | | | | | | |
| | Traditional latrines / All latrines | 71% | 61% | | | Traditional latrines / All latrines | 62% | 48% | | | | | | | |
| | Improved + traditional latrines / All latrines | 100% | 100% | | | Improved + traditional latrines / All latrines | 100% | 100% | | | | | | | |
| | Sewerage connection among flush/pour flush | | | | | Sewerage connection among flush/pour flush | | | | | | | | | |
| Sewerage connection among flush | | | | | Sewerage connection among flush | | | | | | | | | | |
| | Number of people covered by the survey | | | | | Number of people covered by the survey | | | | | | | | | |
| | Number of households covered by the survey | | | | | Number of households covered by the survey | | | | | | | | | |
| | Total population | | | | | Total population | | | | | | | | | |
| Comments | * Urban figures calculated as combination of TEG/SPS and other urban using the sample size n | | | | Comments | * Urban figures calculated as combination of TEG/SPS and other urban using the sample size n | | | | | | | | | |

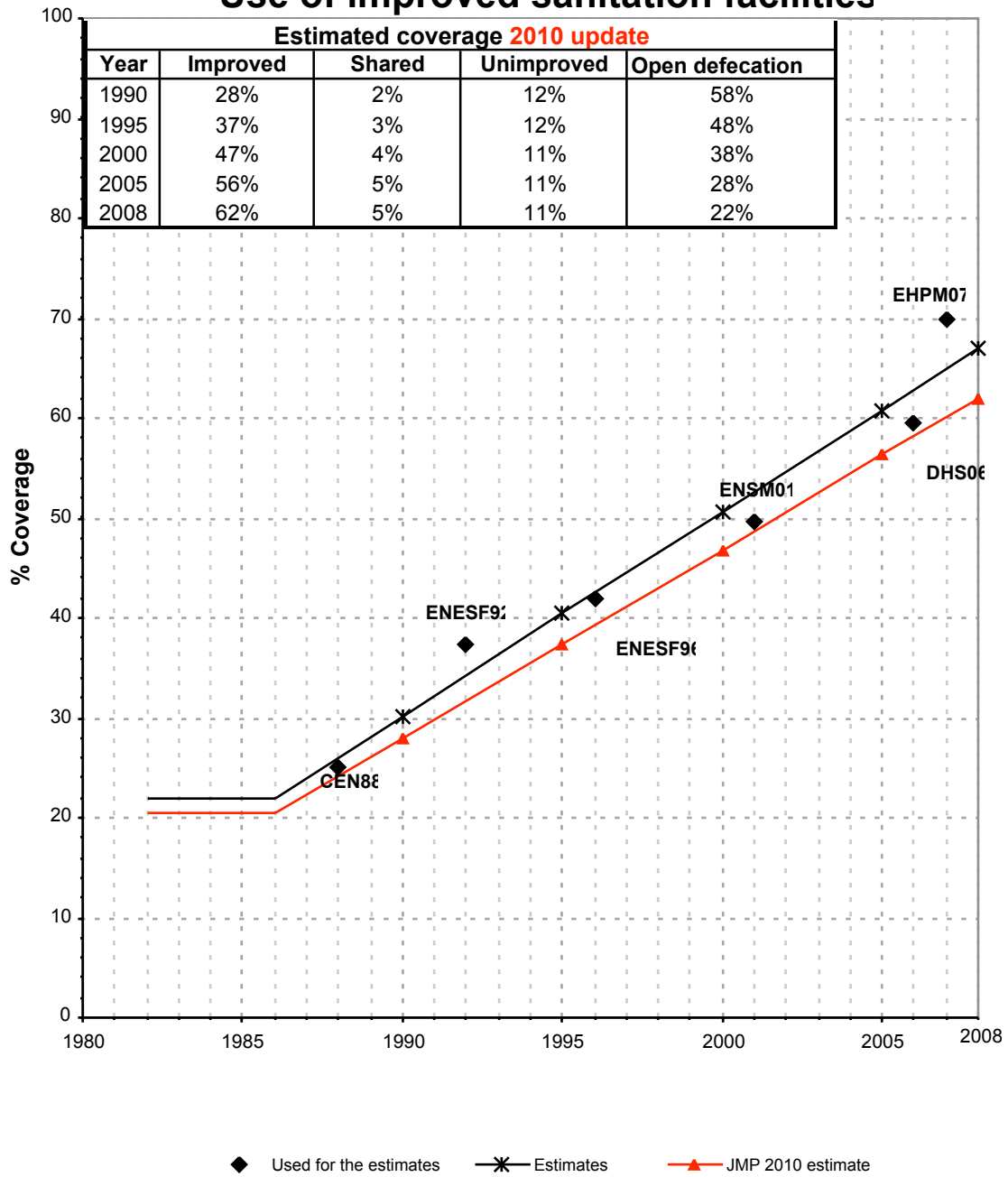
| Honduras | | | SANITATION | | | | | | | | | | | | | | | |
|---|---------|------|------------------|----------|-------|----------|-----------------|----------|--------|----------|------------------|----------|-------|----------|-----------------|----------|--------|----------|
| | | | URBAN | | | | | | | | RURAL | | | | | | | |
| | | | Sewer connection | | Total | | Open defecation | | Shared | | Sewer connection | | Total | | Open defecation | | Shared | |
| Source | Code | Year | Used | Not used | Used | Not used | Used | Not used | Used | Not used | Used | Not used | Used | Not used | Used | Not used | Used | Not used |
| National Census | CEN88 | 1988 | 44.6 | | 72.2 | | 12.2 | | | | 3.1 | | 25.2 | | 62.0 | | | |
| Encuesta Nacional de Epidemiologia Y Salud Familiar | ENESF92 | 1992 | 40.2 | | 84.1 | | 12.0 | | | | 0.8 | | 37.3 | | 56.9 | | | |
| Encuesta Nacional de Epidemiologia Y Salud Familiar | ENESF96 | 1996 | 47.1 | | 81.5 | | 5.8 | | | | 1.1 | | 41.9 | | 42.8 | | | |
| Encuesta Nacional de Salud Masculina | ENSM01 | 2001 | 49.3 | | 84.5 | | 4.9 | | | | 1.4 | | 49.7 | | 37.4 | | | |
| Demographic and Health Survey | DHS06 | 2006 | 58.9 | | 88.6 | | 3.0 | | 12.1 | | 2.5 | | 59.4 | | 29.5 | | 7.4 | |
| XXXV Encuesta Permanente de Hogares de Propositos Multiples, 2007 | EPHM07 | 2007 | 62.9 | | 91.8 | | 2.8 | | | | 4.1 | | 69.9 | | 21.4 | | | |
| XXXV Encuesta Permanente de Hogares de Propositos Multiples, 2007 | EPHM02 | 2002 | | | | | | | | | | | | | | | | |

Honduras - urban - Use of improved sanitation facilities



■ Used for the estimates * Estimates ▲ JMP 2010 estimate

Honduras - rural - Use of improved sanitation facilities



Sanitation

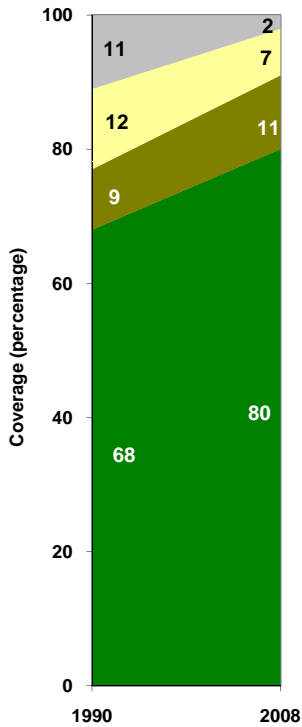
| Honduras | Sanitation coverage estimates | | | | | |
|-----------------------|-------------------------------|------|-----------|------|-----------|------|
| | Urban (%) | | Rural (%) | | Total (%) | |
| | 1990 | 2008 | 1990 | 2008 | 1990 | 2008 |
| Improved facilities | 68 | 80 | 28 | 62 | 44 | 71 |
| Shared facilities | 9 | 11 | 2 | 5 | 5 | 8 |
| Unimproved facilities | 12 | 7 | 12 | 11 | 12 | 9 |
| Open defecation | 11 | 2 | 58 | 22 | 39 | 12 |

Source: WHO/UNICEF JMP, 2010

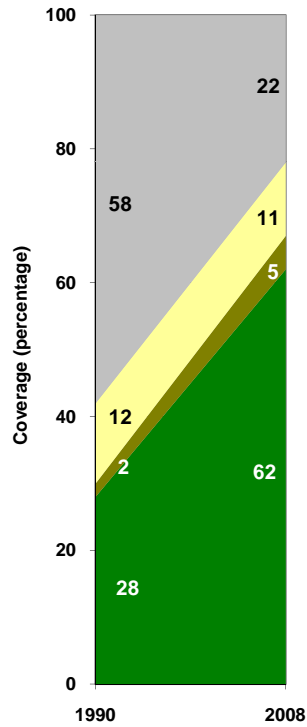
| Honduras | Urban | | Rural | | Total | |
|--------------------|-------|-------|-------|-------|-------|-------|
| | 1990 | 2008 | 1990 | 2008 | 1990 | 2008 |
| Population (x1000) | 1,974 | 3,504 | 2,928 | 3,815 | 4,901 | 7,319 |

Source: UN / Population Division, 2008

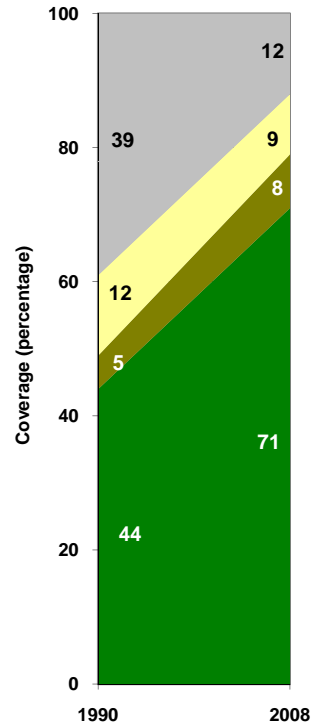
Urban sanitation trends



Rural sanitation trends



Total sanitation trends



- Open defecation
- Unimproved facilities
- Shared facilities
- Improved facilities

- Open defecation
- Unimproved facilities
- Shared facilities
- Improved facilities

- Open defecation
- Unimproved facilities
- Shared facilities
- Improved facilities