

WHO / UNICEF

Joint Monitoring Programme
for Water Supply and Sanitation

Estimates for the use of

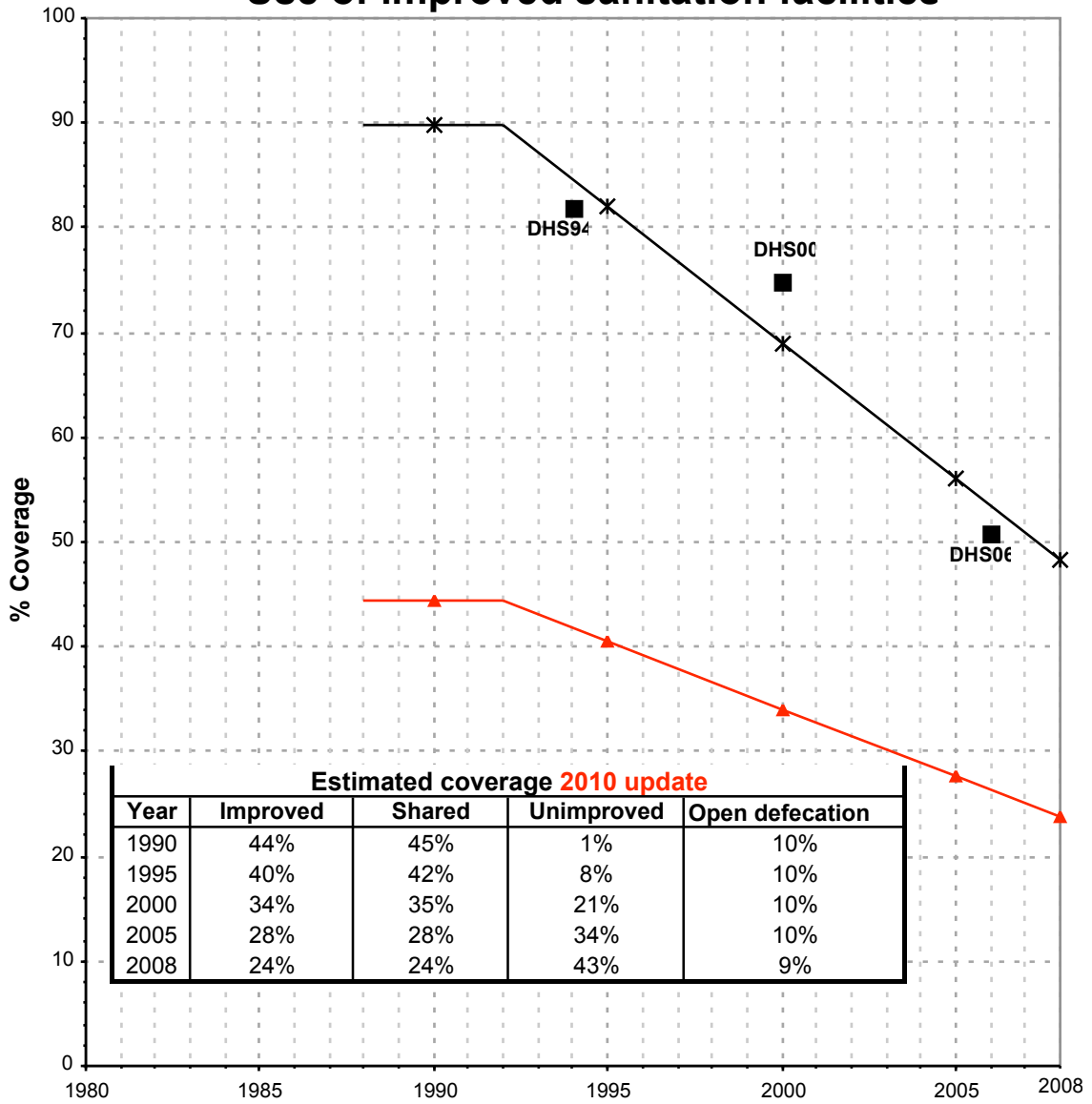
**Improved Drinking-Water Sources
and Improved Sanitation Facilities**

Updated March 2010

childinfo.org

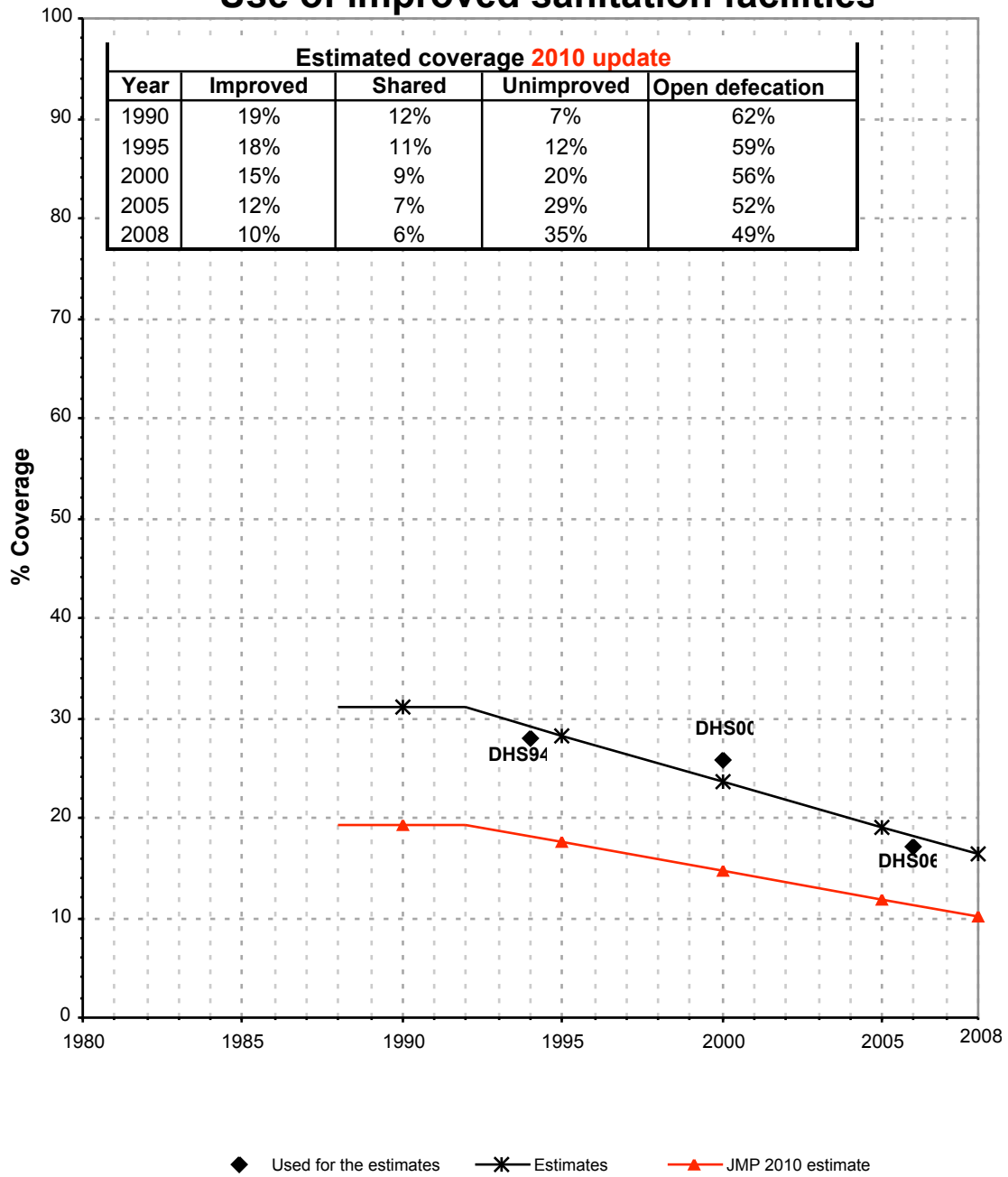
Haiti			SANITATION															
			URBAN								RURAL							
			Sewer connection		Total		Open defecation		Shared		Sewer connection		Total		Open defecation		Shared	
Source	Code	Year	Used	Not used	Used	Not used	Used	Not used	Used	Not used	Used	Not used	Used	Not used	Used	Not used	Used	Not used
National Census	CEN82	1982		0.0		28.2						0.0		6.0				
Demographic and Health Survey	DHS94	1994	2.4		81.8		12.6				0.0		28.0		60.0			
Global Water Supply and Sanitation Assessment 2000.	JMP99	1998		0.0		45.7					0.0		16.5					
Demographic and Health Survey	DHS00	2000	1.9		74.7		9.9		56.0		0.0		25.9		55.9		41.8	
Demographic and Health Survey	DHS06	2006	3.0		50.7		9.9		45.3		0.4		17.0		50.6		34.0	

Haiti - urban - Use of improved sanitation facilities



■ Used for the estimates * Estimates ▲ JMP 2010 estimate

Haiti - rural - Use of improved sanitation facilities



Sanitation

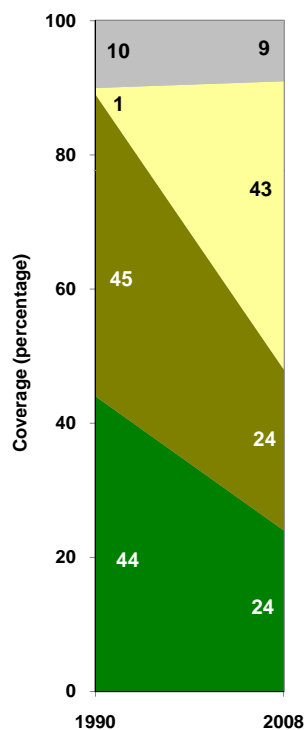
Haiti	Sanitation coverage estimates					
	Urban (%)		Rural (%)		Total (%)	
	1990	2008	1990	2008	1990	2008
Improved facilities	44	24	19	10	26	17
Shared facilities	45	24	12	6	21	14
Unimproved facilities	1	43	7	35	6	39
Open defecation	10	9	62	49	47	30

Source: WHO/UNICEF JMP, 2010

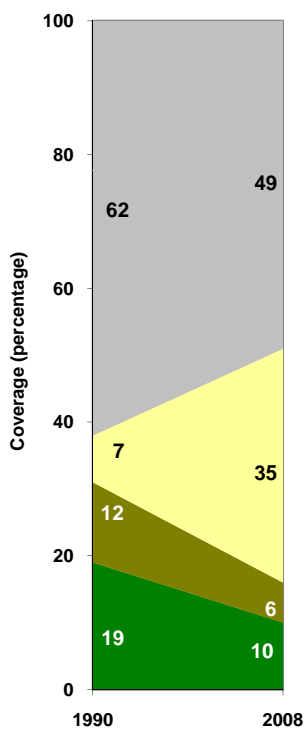
Haiti	Urban		Rural		Total	
	1990	2008	1990	2008	1990	2008
Population (x1000)	2,026	4,635	5,081	5,241	7,108	9,876

Source: UN / Population Division, 2008

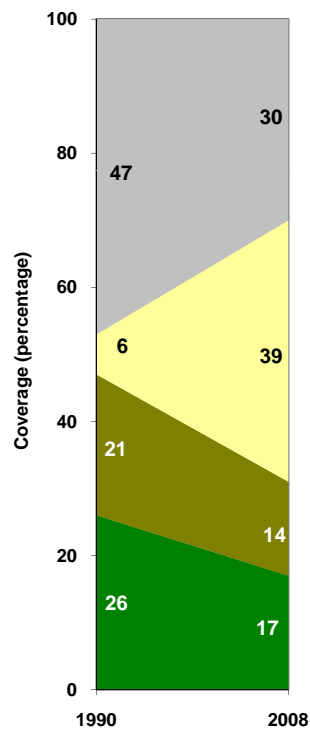
Urban sanitation trends



Rural sanitation trends



Total sanitation trends



■ Open defecation
 ■ Unimproved facilities
 ■ Shared facilities
 ■ Improved facilities

■ Open defecation
 ■ Unimproved facilities
 ■ Shared facilities
 ■ Improved facilities

■ Open defecation
 ■ Unimproved facilities
 ■ Shared facilities
 ■ Improved facilities