

WHO / UNICEF

Joint Monitoring Programme
for Water Supply and Sanitation

Estimates for the use of

**Improved Drinking-Water Sources
and Improved Sanitation Facilities**

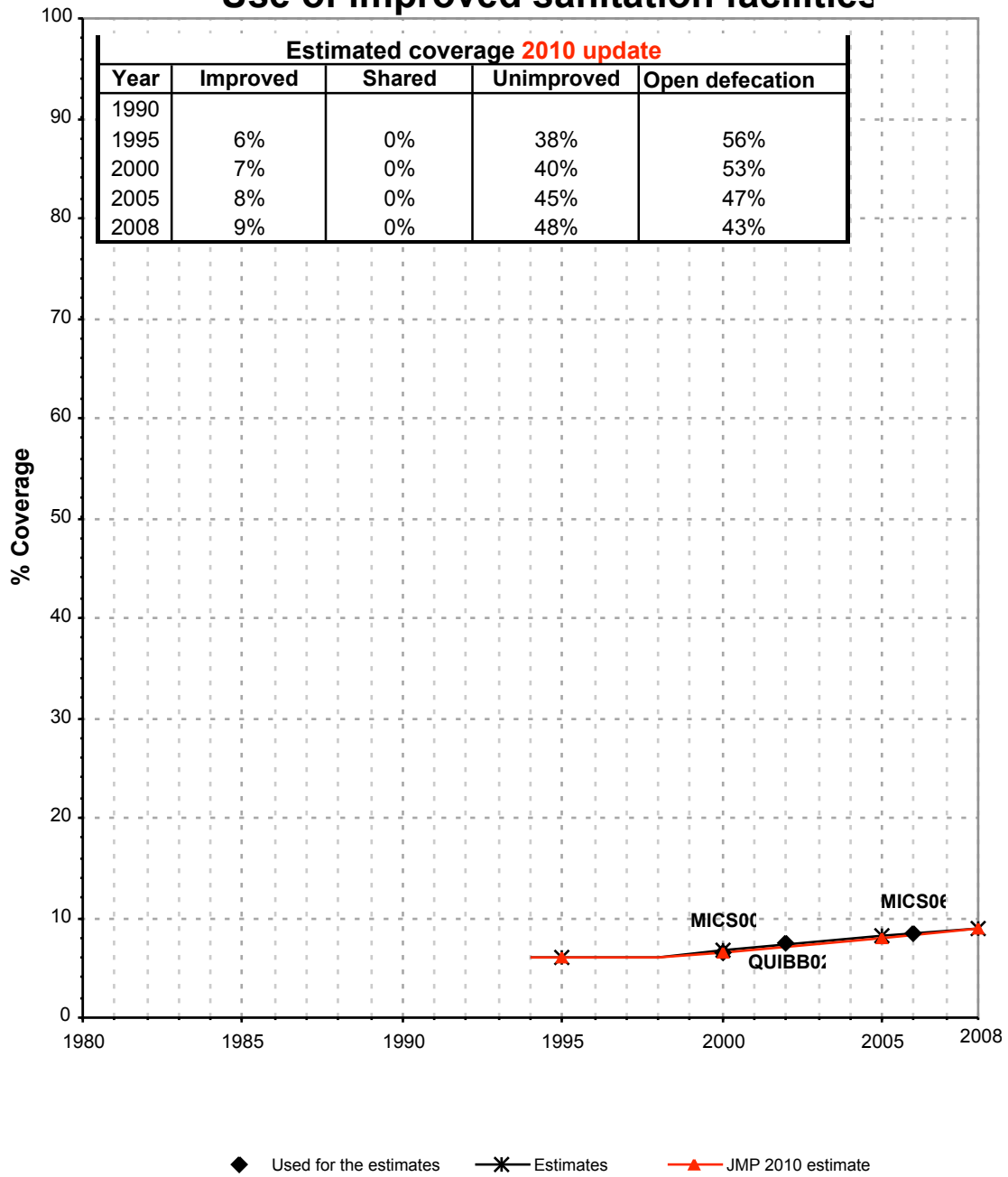
Updated March 2010

childinfo.org

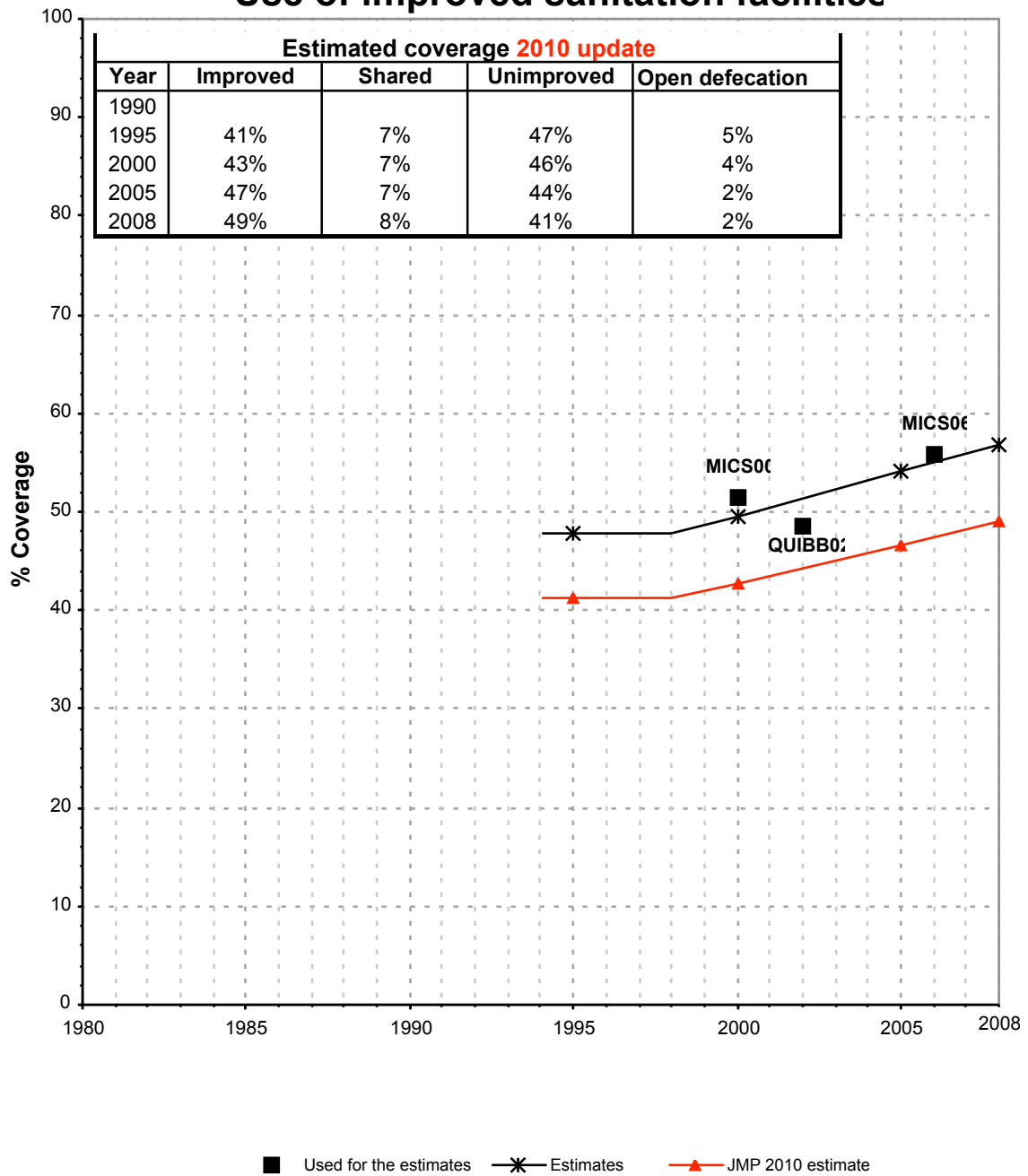
Use of sanitation facilities		MICS00			Guinea-Bissau			Use of sanitation facilities		MICS06			Guinea-Bissau		
Multiple Indicator Cluster Survey					2000			Multiple Indicator Cluster Survey					2006		
Original denomination	Classification	Urban	Rural	Total	Original denomination	Classification	Urban	Rural	Total						
	Flush and pour flush	19.0	0.7			Flush and pour flush	28.8	1.8							
	to piped sewer system					to piped sewer system	13.0	0.4							
	to septic tank					to septic tank	6.8	0.3							
	to pit					to pit	9.0	1.1							
	to unknown place/ not sure/DK					to unknown place/ not sure/DK									
	to elsewhere					to elsewhere									
Sistema de esgoto ou fossa séptica	Flush/toilets	15.5	0.4			Flush/toilets	28.8	1.8							
	to piped sewer system				Chasse branchee a fegout	to piped sewer system	13.0	0.4							
	to septic tank				Chasse branchee a fosse septique	to septic tank	6.8	0.3							
	to pit				Chasse branchee a latrines	to pit	9.0	1.1							
	to unknown place/ not sure/DK					to unknown place/ not sure/DK									
	to elsewhere					to elsewhere									
	Private flush/toilet					Private flush/toilet									
	to piped sewer system					to piped sewer system									
	to septic tank					to septic tank									
	to pit					to pit									
	to unknown place/ not sure/DK					to unknown place/ not sure/DK									
	to elsewhere					to elsewhere									
	Public/shared flush/toilet					Public/shared flush/toilet									
	to piped sewer system					to piped sewer system									
	to septic tank					to septic tank									
	to pit					to pit									
	to unknown place/ not sure/DK					to unknown place/ not sure/DK									
	to elsewhere					to elsewhere									
	Latrines	79.8	44.1			Latrines	68.1	50.2							
Latrine com descarga de água	Pour flush latrines	3.5	0.3			Pour flush latrines									
	to piped sewer system					to piped sewer system									
	to septic tank					to septic tank									
	to pit					to pit									
	to unknown place/ not sure/DK					to unknown place/ not sure/DK									
	to elsewhere					to elsewhere									
	Private pour flush latrine					Private pour flush latrine									
	to piped sewer system					to piped sewer system									
	to septic tank					to septic tank									
	to pit					to pit									
	to unknown place/ not sure/DK					to unknown place/ not sure/DK									
	to elsewhere					to elsewhere									
	Public/shared pour flush latrine					Public/shared pour flush latrine									
	to piped sewer system					to piped sewer system									
	to septic tank					to septic tank									
	to pit					to pit									
	to unknown place/ not sure/DK					to unknown place/ not sure/DK									
	to elsewhere					to elsewhere									
	Dry latrines	76.3	43.8			Dry latrines	68.1	50.2							
	Improved latrines	3.6	0.2			Improved latrines	0.1	0.1							
	Ventilated Improved Pit latrine				Latrines ameliores auto aerees (LAA)	Ventilated Improved Pit latrine	0.1	0.1							
Latrina melhorada	Pit latrine with slab/covered latrine	3.6	0.2			Pit latrine with slab/covered latrine									
Latrina tradicional ou cerco	Traditional latrine	72.5	43.5		Chasse branchee a autre chose	Traditional latrine	68.0	50.1							
Valas a céu aberto	Pit latrine without slab/open pit	0.2	0.1			Pit latrine without slab/open pit									
	Hanging toilet/hanging latrine				Toilette suspendues/latrines suspendues	Hanging toilet/hanging latrine	0.0	0.0							
	Bucket latrine					Bucket latrine									
	Other					Other									
	Private Latrines					Private Latrines									
	Ventilated Improved Pit latrine					Ventilated Improved Pit latrine									
	Pit latrine with slab/covered latrine					Pit latrine with slab/covered latrine									
	Traditional latrine					Traditional latrine									
	Pit latrine without slab/open pit					Pit latrine without slab/open pit									
	Hanging toilet/hanging latrine					Hanging toilet/hanging latrine									
	Bucket latrine					Bucket latrine									
	Other					Other									
	Public/shared Latrines					Public/shared Latrines									
	Ventilated Improved Pit latrine					Ventilated Improved Pit latrine									
	Pit latrine with slab/covered latrine					Pit latrine with slab/covered latrine									
	Traditional latrine					Traditional latrine									
	Pit latrine without slab/open pit					Pit latrine without slab/open pit									
	Hanging toilet/hanging latrine					Hanging toilet/hanging latrine									
	Bucket latrine					Bucket latrine									
	Other					Other									
	Composting toilets				Toilettes a compostage	Composting toilets	0.0	0.0							
	Composting toilet (private)					Composting toilet (private)									
	Composting toilet (shared)					Composting toilet (shared)									
	Other improved					Other improved									
	Other					Other									
	Other					Other									
No mato ou ar livre & Rios, ribeiros e linha de água	No facility, bush, field	4.7	55.4		Pas de toilettes ou brousse ou champ	No facility, bush, field	2.5	46.8							
Outro	Other unimproved	0.1	0.2		Autres	Other unimproved	0.4	0.5							
	Other	0.1	0.2			Other	0.4	0.5							
	Other					Other									
	DK/missing information				Manquant	DK/missing information	0.3	0.5							
	Total	100.1	100.1			Total	100.1	99.8							
Calculations					Calculations										
Estimations	Traditional latrines considered improved, based on QUIBB02	28.8	5.6		Estimations	Traditional latrines considered improved, based on QUIBB02	27.0	6.4							
	Sewerage connection based on MICS 2006	10.2	0.2												
Access to improved sanitation		51%	6%		Access to improved sanitation		56%	8%							
Access to sewerage connections		10%	0%		Access to sewerage connections		13%	0%							
Used for the estimates		Yes	Yes		Used for the estimates		Yes	Yes							
Used for the estimates		Yes	Yes		Used for the estimates		Yes	Yes							
Ratios	Shared improved facilities/all improved facilities				Ratios	Shared improved facilities/all improved facilities	13.8%	1.9%							
	Improved latrine / All latrines	9%	1%			Improved latrine / All latrines	0%	0%							
	Covered dry latrines / All dry latrines	5%	0%			Covered dry latrines / All dry latrines									
	VIP / All latrines					VIP / All latrines	0%	0%							
	Traditional latrines / All latrines	91%	99%			Traditional latrines / All latrines	100%	100%							
	Improved + traditional latrines / All latrines	100%	100%			Improved + traditional latrines / All latrines	100%	100%							
	Sewerage connection among flush/pour flush					Sewerage connection among flush/pour flush	45.1	22.2							
	Sewerage connection among flush					Sewerage connection among flush+septic tank	65.7	57.1							
	Number of people covered by the survey					Number of people covered by the survey									
	Number of households covered by the survey					Number of households covered by the survey									
	Total population					Total population									
Comments					Comments										

Guinea-Bissau			SANITATION															
			URBAN								RURAL							
			Sewer connection		Total		Open defecation		Shared		Sewer connection		Total		Open defecation		Shared	
Source	Code	Year	Used	Not used	Used	Not used	Used	Not used	Used	Not used	Used	Not used	Used	Not used	Used	Not used	Used	Not used
National census 1991	CEN91	1991	1.0			88.2					0.0			33.6				
Global Water Supply and Sanitation Assessment 2000.	JMP99	1999		1.0		88.2						0.0		34.0				
Multiple Indicator Cluster Survey	MICS00	2000	10.2		51.4		4.7				0.2		6.5		55.4			
Multiple Indicator Cluster Survey	MICS06	2006	13.0		55.9		2.5		13.8		0.4		8.3		46.8		1.9	
Questionnaire Unifié sur les Indicateurs de Base de Bien-Etre	QUIBB02	2002	3.6		48.7		2.2				0.5		7.5		48.0			

Guinea-Bissau - rural - Use of improved sanitation facilities



Guinea-Bissau - urban - Use of improved sanitation facilities



Sanitation

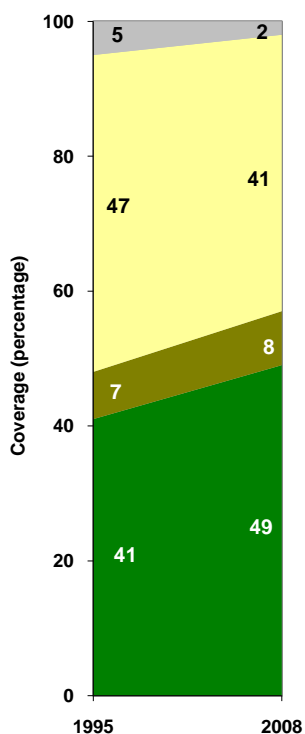
Guinea-Bissau	Sanitation coverage estimates					
	Urban (%)		Rural (%)		Total (%)	
	1995	2008	1995	2008	1995	2008
Improved facilities	41	49	6	9	16	21
Shared facilities	7	8	0	0	2	2
Unimproved facilities	47	41	38	48	41	46
Open defecation	5	2	56	43	41	31

Source: WHO/UNICEF JMP, 2010

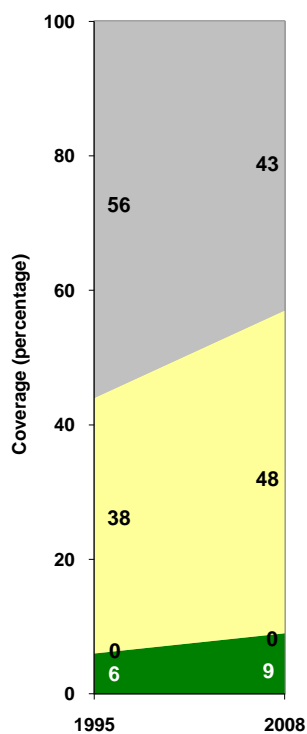
Guinea-Bissau	Urban		Rural		Total	
	1995	2008	1995	2008	1995	2008
Population (x1000)	348	469	818	1,107	1,166	1,575

Source: UN / Population Division, 2008

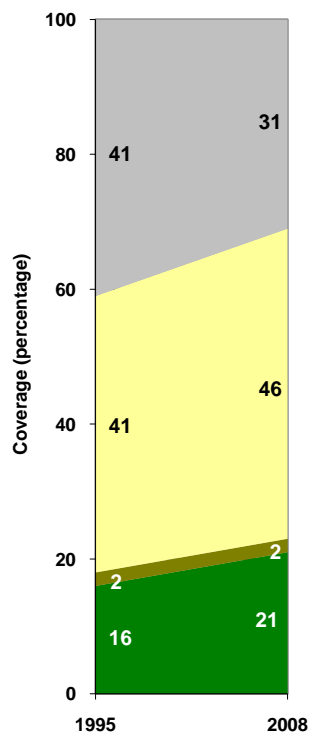
Urban sanitation trends



Rural sanitation trends



Total sanitation trends



■ Open defecation
 ■ Unimproved facilities
 ■ Shared facilities
 ■ Improved facilities

■ Open defecation
 ■ Unimproved facilities
 ■ Shared facilities
 ■ Improved facilities

■ Open defecation
 ■ Unimproved facilities
 ■ Shared facilities
 ■ Improved facilities