

WHO / UNICEF

Joint Monitoring Programme
for Water Supply and Sanitation

Estimates for the use of

**Improved Drinking-Water Sources
and Improved Sanitation Facilities**

Updated March 2010

childinfo.org

Use of sanitation facilities		DHS92			Guinea			Use of sanitation facilities		CEN96			Guinea		
Demographic and Health Survey					1992			National census					1996		
as recorded on the Global Water Supply and Sanitation Assessment 2000. Water Supply and Sanitation Sector Questionnaire - 1999.								as recorded on the Global Water Supply and Sanitation Assessment 2000. Water Supply and Sanitation Sector Questionnaire - 1999.							
Original denomination	Classification	Urban	Rural	Total	Original denomination	Classification	Urban	Rural	Total	Original denomination	Classification	Urban	Rural	Total	
	Flush and pour flush	17.8	1.1			Flush and pour flush					Flush and pour flush	16.4	1.8		
	to piped sewer system					to piped sewer system					to piped sewer system	0.0	0.0		
	to septic tank					to septic tank					to septic tank	16.4	1.8		
	to pit					to pit					to pit				
	to unknown place/ not sure/DK					to unknown place/ not sure/DK					to unknown place/ not sure/DK				
	to elsewhere					to elsewhere					to elsewhere				
Flush toilet	Flush/toilets	17.8	1.1			Flush/toilets					Flush/toilets	16.4	1.8		
	to piped sewer system				Private sewerage connection	to piped sewer system					to piped sewer system	0.0	0.0		
	to septic tank				Private septic tank	to septic tank					to septic tank	16.4	1.8		
	to pit					to pit					to pit				
	to unknown place/ not sure/DK					to unknown place/ not sure/DK					to unknown place/ not sure/DK				
	to elsewhere					to elsewhere					to elsewhere				
	Private flush/toilet					Private flush/toilet					Private flush/toilet				
	to piped sewer system					to piped sewer system					to piped sewer system				
	to septic tank					to septic tank					to septic tank				
	to pit					to pit					to pit				
	to unknown place/ not sure/DK					to unknown place/ not sure/DK					to unknown place/ not sure/DK				
	to elsewhere					to elsewhere					to elsewhere				
	Public/shared flush/toilet					Public/shared flush/toilet					Public/shared flush/toilet				
	to piped sewer system					to piped sewer system					to piped sewer system				
	to septic tank					to septic tank					to septic tank				
	to pit					to pit					to pit				
	to unknown place/ not sure/DK					to unknown place/ not sure/DK					to unknown place/ not sure/DK				
	to elsewhere					to elsewhere					to elsewhere				
	Latrines	75.9	50.1			Latrines					Latrines	77.4	38.9		
	Pour flush latrines					Pour flush latrines					Pour flush latrines				
	to piped sewer system					to piped sewer system					to piped sewer system				
	to septic tank					to septic tank					to septic tank				
	to pit					to pit					to pit				
	to unknown place/ not sure/DK					to unknown place/ not sure/DK					to unknown place/ not sure/DK				
	to elsewhere					to elsewhere					to elsewhere				
	Private pour flush latrine					Private pour flush latrine					Private pour flush latrine				
	to piped sewer system					to piped sewer system					to piped sewer system				
	to septic tank					to septic tank					to septic tank				
	to pit					to pit					to pit				
	to unknown place/ not sure/DK					to unknown place/ not sure/DK					to unknown place/ not sure/DK				
	to elsewhere					to elsewhere					to elsewhere				
	Public/shared pour flush latrine					Public/shared pour flush latrine					Public/shared pour flush latrine				
	to piped sewer system					to piped sewer system					to piped sewer system				
	to septic tank					to septic tank					to septic tank				
	to pit					to pit					to pit				
	to unknown place/ not sure/DK					to unknown place/ not sure/DK					to unknown place/ not sure/DK				
	to elsewhere					to elsewhere					to elsewhere				
	Dry latrines	75.9	50.1			Dry latrines					Dry latrines	77.4	38.9		
	Improved latrines	23.1	10.3			Improved latrines					Improved latrines				
	Ventilated Improved Pit latrine					Ventilated Improved Pit latrine					Ventilated Improved Pit latrine				
	Pit latrine with slab/covered latrine	23.1	10.3			Pit latrine with slab/covered latrine					Pit latrine with slab/covered latrine				
	Traditional latrine					Traditional latrine					Traditional latrine	77.4	38.9		
	Pit latrine without slab/open pit	52.8	39.8			Pit latrine without slab/open pit					Pit latrine without slab/open pit				
	Hanging toilet/hanging latrine					Hanging toilet/hanging latrine					Hanging toilet/hanging latrine				
	Bucket latrine					Bucket latrine					Bucket latrine				
	Other					Other					Other				
	Private Latrines				Private latrine	Private Latrines				Private latrine	Private Latrines	18.7	30.3		
	Ventilated Improved Pit latrine					Ventilated Improved Pit latrine					Ventilated Improved Pit latrine				
	Pit latrine with slab/covered latrine					Pit latrine with slab/covered latrine					Pit latrine with slab/covered latrine				
	Traditional latrine					Traditional latrine					Traditional latrine	18.7	30.3		
	Pit latrine without slab/open pit					Pit latrine without slab/open pit					Pit latrine without slab/open pit				
	Hanging toilet/hanging latrine					Hanging toilet/hanging latrine					Hanging toilet/hanging latrine				
	Bucket latrine					Bucket latrine					Bucket latrine				
	Other					Other					Other				
	Public/shared Latrines				Shared latrine	Public/shared Latrines				Shared latrine	Public/shared Latrines	58.7	8.6		
	Ventilated Improved Pit latrine					Ventilated Improved Pit latrine					Ventilated Improved Pit latrine				
	Pit latrine with slab/covered latrine					Pit latrine with slab/covered latrine					Pit latrine with slab/covered latrine				
	Traditional latrine					Traditional latrine					Traditional latrine	58.7	8.6		
	Pit latrine without slab/open pit					Pit latrine without slab/open pit					Pit latrine without slab/open pit				
	Hanging toilet/hanging latrine					Hanging toilet/hanging latrine					Hanging toilet/hanging latrine				
	Bucket latrine					Bucket latrine					Bucket latrine				
	Other					Other					Other				
	Composting toilets					Composting toilets					Composting toilets				
	Composting toilet (private)					Composting toilet (private)					Composting toilet (private)				
	Composting toilet (shared)					Composting toilet (shared)					Composting toilet (shared)				
	Other improved					Other improved					Other improved				
	Other					Other					Other				
	Other					Other					Other				
Nature	No facility, bush, field	5.9	48.0		No Facilities	No facility, bush, field				No Facilities	No facility, bush, field	3.6	56.9		
	Other unimproved	0.6	0.8			Other unimproved					Other unimproved	2.6	2.4		
Other/Not Defined	Other	0.6	0.8		Other / not specified	Other				Other / not specified	Other	2.6	2.4		
	Other					Other					Other				
	DK/missing information					DK/missing information					DK/missing information				
	Total	100.2	100.0			Total	100.0	100.0			Total	100.0	100.0		
Calculations					Calculations					Calculations					
Estimations					Estimations					Estimations					
	SC, based on CEN96	0.0	0.0			latrines improved based on MICS96	40.8	11.5							
	Access to improved sanitation :	41%	11%			Access to improved sanitation :	57%	13%			Access to improved sanitation :	57%	13%		
	Access to sewerage connections :	0%	0%			Access to sewerage connections :	0%	0%			Access to sewerage connections :	0%	0%		
	Used for the estimates	Yes	Yes			Used for the estimates	Yes	Yes			Used for the estimates	Yes	Yes		
	Used for the estimates	Yes	Yes			Used for the estimates	Yes	Yes			Used for the estimates	Yes	Yes		
Ratios	Shared improved facilities/all improved facilities					Shared improved facilities/all improved facilities					Shared improved facilities/all improved facilities	54.0%	19.0%		
	Improved latrine / All latrines	30%	21%			Improved latrine / All latrines					Improved latrine / All latrines				
	Covered dry latrines / All dry latrines	30%	21%			Covered dry latrines / All dry latrines					Covered dry latrines / All dry latrines				
	VIP / All latrines					VIP / All latrines					VIP / All latrines				
	Traditional latrines / All latrines					Traditional latrines / All latrines					Traditional latrines / All latrines	100%	100%		
	Improved + traditional latrines / All latrines					Improved + traditional latrines / All latrines					Improved + traditional latrines / All latrines				
	Sewerage connection among flush/pour flush					Sewerage connection among flush/pour flush					Sewerage connection among flush/pour flush	0.0	0.0		
	Sewerage connection among flush					Sewerage connection among flush					Sewerage connection among flush	0.0	0.0		
	Number of people covered by the survey					Number of people covered by the survey					Number of people covered by the survey				
	Number of households covered by the survey					Number of households covered by the survey					Number of households covered by the survey				
	Total population					Total population	2139.63	5016.78			Total population	2139.63	5016.78		
Comments					Comments					Comments					

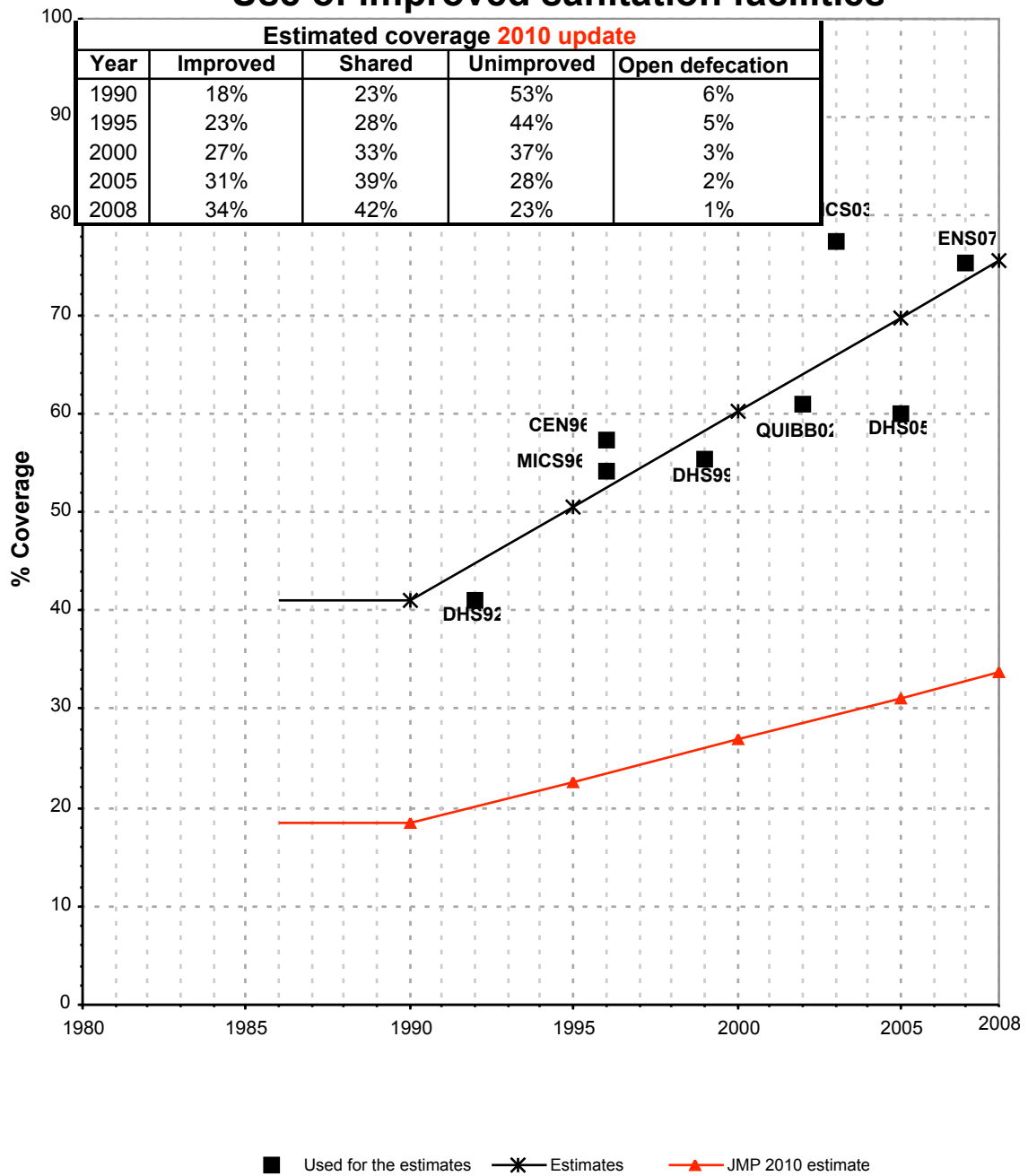
Use of sanitation facilities		MICS96			Guinea			Use of sanitation facilities		DHS99			Guinea		
Multiple Indicator Cluster Survey					1996			Demographic and Health Survey					1999		
Original denomination	Classification	Urban	Rural	Total	Original denomination	Classification	Urban	Rural	Total						
	Flush and pour flush	8.5	1.2			Flush and pour flush	7.7	0.2							
	to piped sewer system					to piped sewer system									
	to septic tank					to septic tank									
	to pit					to pit									
	to unknown place/ not sure/DK					to unknown place/ not sure/DK									
	to elsewhere					to elsewhere									
Flush toilet	Flush/toilets	8.5	1.2		Chasse d'eau	Flush/toilets	7.7	0.2							
	to piped sewer system					to piped sewer system									
	to septic tank					to septic tank									
	to pit					to pit									
	to unknown place/ not sure/DK					to unknown place/ not sure/DK									
	to elsewhere					to elsewhere									
	Private flush/toilet					Private flush/toilet									
	to piped sewer system					to piped sewer system									
	to septic tank					to septic tank									
	to pit					to pit									
	to unknown place/ not sure/DK					to unknown place/ not sure/DK									
	to elsewhere					to elsewhere									
	Public/shared flush/toilet					Public/shared flush/toilet									
	to piped sewer system					to piped sewer system									
	to septic tank					to septic tank									
	to pit					to pit									
	to unknown place/ not sure/DK					to unknown place/ not sure/DK									
	to elsewhere					to elsewhere									
	Latrines	86.5	60.2			Latrines	86.9	47.2							
	Pour flush latrines					Pour flush latrines									
	to piped sewer system					to piped sewer system									
	to septic tank					to septic tank									
	to pit					to pit									
	to unknown place/ not sure/DK					to unknown place/ not sure/DK									
	to elsewhere					to elsewhere									
	Private pour flush latrine					Private pour flush latrine									
	to piped sewer system					to piped sewer system									
	to septic tank					to septic tank									
	to pit					to pit									
	to unknown place/ not sure/DK					to unknown place/ not sure/DK									
	to elsewhere					to elsewhere									
	Public/shared pour flush latrine					Public/shared pour flush latrine									
	to piped sewer system					to piped sewer system									
	to septic tank					to septic tank									
	to pit					to pit									
	to unknown place/ not sure/DK					to unknown place/ not sure/DK									
	to elsewhere					to elsewhere									
	Dry latrines	86.5	60.2			Dry latrines	86.9	47.2							
	Improved latrines	45.6	17.8			Improved latrines	47.6	5.0							
	Ventilated Improved Pit latrine					Ventilated Improved Pit latrine									
Protected Latrine3	Pit latrine with slab/covered latrine	45.6	17.8		Fosse Ameliorée/latrine	Pit latrine with slab/covered latrine	47.6	5.0							
	Traditional latrine					Traditional latrine									
Unprotected Latrine	Pit latrine without slab/open pit	40.9	42.4		Fosse Sommaire	Pit latrine without slab/open pit	39.3	42.2							
	Hanging toilet/hanging latrine					Hanging toilet/hanging latrine									
	Bucket latrine					Bucket latrine									
	Other					Other									
	Private Latrines					Private Latrines									
	Ventilated Improved Pit latrine					Ventilated Improved Pit latrine									
	Pit latrine with slab/covered latrine					Pit latrine with slab/covered latrine									
	Traditional latrine					Traditional latrine									
	Pit latrine without slab/open pit					Pit latrine without slab/open pit									
	Hanging toilet/hanging latrine					Hanging toilet/hanging latrine									
	Bucket latrine					Bucket latrine									
	Other					Other									
	Public/shared Latrines					Public/shared Latrines									
	Ventilated Improved Pit latrine					Ventilated Improved Pit latrine									
	Pit latrine with slab/covered latrine					Pit latrine with slab/covered latrine									
	Traditional latrine					Traditional latrine									
	Pit latrine without slab/open pit					Pit latrine without slab/open pit									
	Hanging toilet/hanging latrine					Hanging toilet/hanging latrine									
	Bucket latrine					Bucket latrine									
	Other					Other									
	Composting toilets					Composting toilets									
	Composting toilet (private)					Composting toilet (private)									
	Composting toilet (shared)					Composting toilet (shared)									
	Other improved					Other improved									
	Other					Other									
No Facilities	No facility, bush, field	5.0	38.6		Pas de toilettes	No facility, bush, field	3.4	50.9							
	Other unimproved	0.0	0.0			Other unimproved									
Not Specified	Other	0.0	0.0			Other									
	Other					Other									
	DK/missing information				ND	DK/missing information	2.0	1.6							
	Total	100.0	100.0			Total	100.0	99.9							
Calculations					Calculations										
Estimations					Estimations										
	SC, based on CEN96	0.0	0.0			SC, based on CEN96	0.0	0.0							
	Access to improved sanitation :	54%	19%			Access to improved sanitation :	55%	5%							
	Access to sewerage connections :	0%	0%			Access to sewerage connections :	0%	0%							
	Used for the estimates :	Yes	Yes			Used for the estimates :	Yes	Yes							
	Used for the estimates :	Yes	Yes			Used for the estimates :	Yes	Yes							
Ratios	Shared improved facilities/all improved facilities					Shared improved facilities/all improved facilities									
	Improved latrine / All latrines	53%	30%			Improved latrine / All latrines	55%	11%							
	Covered dry latrines / All dry latrines	53%	30%			Covered dry latrines / All dry latrines	55%	11%							
	VIP / All latrines					VIP / All latrines									
	Traditional latrines / All latrines					Traditional latrines / All latrines									
	Improved + traditional latrines / All latrines					Improved + traditional latrines / All latrines									
	Sewerage connection among flush/pour flush					Sewerage connection among flush/pour flush									
	Sewerage connection among flush					Sewerage connection among flush									
	Number of people covered by the survey:					Number of people covered by the survey:									
	Number of households covered by the survey:					Number of households covered by the survey:									
	Total population:					Total population:									
Comments					Comments										

Use of sanitation facilities		DHS05			Guinea			Use of sanitation facilities		EP91			Guinea		
Demographic and Health Survey					2005			Enquête prioritaire					1991		
								Direction nationale de la Statistique et de l'informatique							
Original denomination	Classification	Urban	Rural	Total	Original denomination	Classification	Urban	Rural	Total						
	Flush and pour flush	7.0	0.4			Flush and pour flush									
	to piped sewer system					to piped sewer system									
	to septic tank					to septic tank									
	to pit					to pit									
	to unknown place/ not sure/DK					to unknown place/ not sure/DK									
	to elsewhere					to elsewhere									
Chasse d'eau	Flush/toilets	7.0	0.4			Flush/toilets									
	to piped sewer system					to piped sewer system									
	to septic tank					to septic tank									
	to pit					to pit									
	to unknown place/ not sure/DK					to unknown place/ not sure/DK									
	to elsewhere					to elsewhere									
	Private flush/toilet					Private flush/toilet									
	to piped sewer system					to piped sewer system									
	to septic tank					to septic tank									
	to pit					to pit									
	to unknown place/ not sure/DK					to unknown place/ not sure/DK									
	to elsewhere					to elsewhere									
	Public/shared flush/toilet					Public/shared flush/toilet									
	to piped sewer system					to piped sewer system									
	to septic tank					to septic tank									
	to pit					to pit									
	to unknown place/ not sure/DK					to unknown place/ not sure/DK									
	to elsewhere					to elsewhere									
	Latrines	90.6	57.9			Latrines									
	Pour flush latrines					Pour flush latrines									
	to piped sewer system					to piped sewer system									
	to septic tank					to septic tank									
	to pit					to pit									
	to unknown place/ not sure/DK					to unknown place/ not sure/DK									
	to elsewhere					to elsewhere									
	Private pour flush latrine					Private pour flush latrine									
	to piped sewer system					to piped sewer system									
	to septic tank					to septic tank									
	to pit					to pit									
	to unknown place/ not sure/DK					to unknown place/ not sure/DK									
	to elsewhere					to elsewhere									
	Public/shared pour flush latrine					Public/shared pour flush latrine									
	to piped sewer system					to piped sewer system									
	to septic tank					to septic tank									
	to pit					to pit									
	to unknown place/ not sure/DK					to unknown place/ not sure/DK									
	to elsewhere					to elsewhere									
	Dry latrines	90.6	57.9			Dry latrines									
	Improved latrines	52.9	14.3			Improved latrines									
Fosse/Latrine ventilée améliorées	Ventilated Improved Pit latrine	3.1	1.5			Ventilated Improved Pit latrine									
Fosse/Latrine couvertes	Pit latrine with slab/covered latrine	49.8	12.8			Pit latrine with slab/covered latrine									
	Traditional latrine					Traditional latrine									
Fosse/Latrine non couvertes	Pit latrine without slab/open pit	37.7	43.6			Pit latrine without slab/open pit									
	Hanging toilet/hanging latrine					Hanging toilet/hanging latrine									
	Bucket latrine					Bucket latrine									
	Other					Other									
	Private Latrines					Private Latrines									
	Ventilated Improved Pit latrine					Ventilated Improved Pit latrine									
	Pit latrine with slab/covered latrine					Pit latrine with slab/covered latrine									
	Traditional latrine					Traditional latrine									
	Pit latrine without slab/open pit					Pit latrine without slab/open pit									
	Hanging toilet/hanging latrine					Hanging toilet/hanging latrine									
	Bucket latrine					Bucket latrine									
	Other					Other									
	Public/shared Latrines					Public/shared Latrines									
	Ventilated Improved Pit latrine					Ventilated Improved Pit latrine									
	Pit latrine with slab/covered latrine					Pit latrine with slab/covered latrine									
	Traditional latrine					Traditional latrine									
	Pit latrine without slab/open pit					Pit latrine without slab/open pit									
	Hanging toilet/hanging latrine					Hanging toilet/hanging latrine									
	Bucket latrine					Bucket latrine									
	Other					Other									
	Composting toilets					Composting toilets									
	Composting toilet (private)					Composting toilet (private)									
	Composting toilet (shared)					Composting toilet (shared)									
	Other improved					Other improved									
	Other					Other									
	Other					Other									
Pas de toilette/nature	No facility, bush, field	2.2	41.5			No facility, bush, field									
	Other unimproved					Other unimproved									
	Other					Other									
	Other					Other									
ND	DK/missing information	0.2	0.2			DK/missing information									
	Total	100.0	100.0			Total									
Calculations					Calculations										
Estimations					Estimations										
	SC, based on CEN96	0.0	0.0												
	Access to improved sanitation :	60%	15%			Access to improved sanitation :									
	Access to sewerage connections :	0%	0%			Access to sewerage connections :									
	Used for the estimates	Yes	Yes			Used for the estimates	No	No							
	Used for the estimates	Yes	Yes			Used for the estimates	No	No							
Ratios	Shared improved facilities/all improved facilities	56.5%	54.0%		Ratios	Shared improved facilities/all improved facilities									
	Improved latrine / All latrines	58%	25%			Improved latrine / All latrines									
	Covered dry latrines / All dry latrines	55%	22%			Covered dry latrines / All dry latrines									
	VIP / All latrines	3%	3%			VIP / All latrines									
	Traditional latrines / All latrines					Traditional latrines / All latrines									
	Improved + traditional latrines / All latrines					Improved + traditional latrines / All latrines									
	Sewerage connection among flush/pour flush					Sewerage connection among flush/pour flush									
	Sewerage connection among flush					Sewerage connection among flush									
	Number of people covered by the survey					Number of people covered by the survey									
	Number of households covered by the survey					Number of households covered by the survey									
	Total population					Total population									
Comments					Comments										

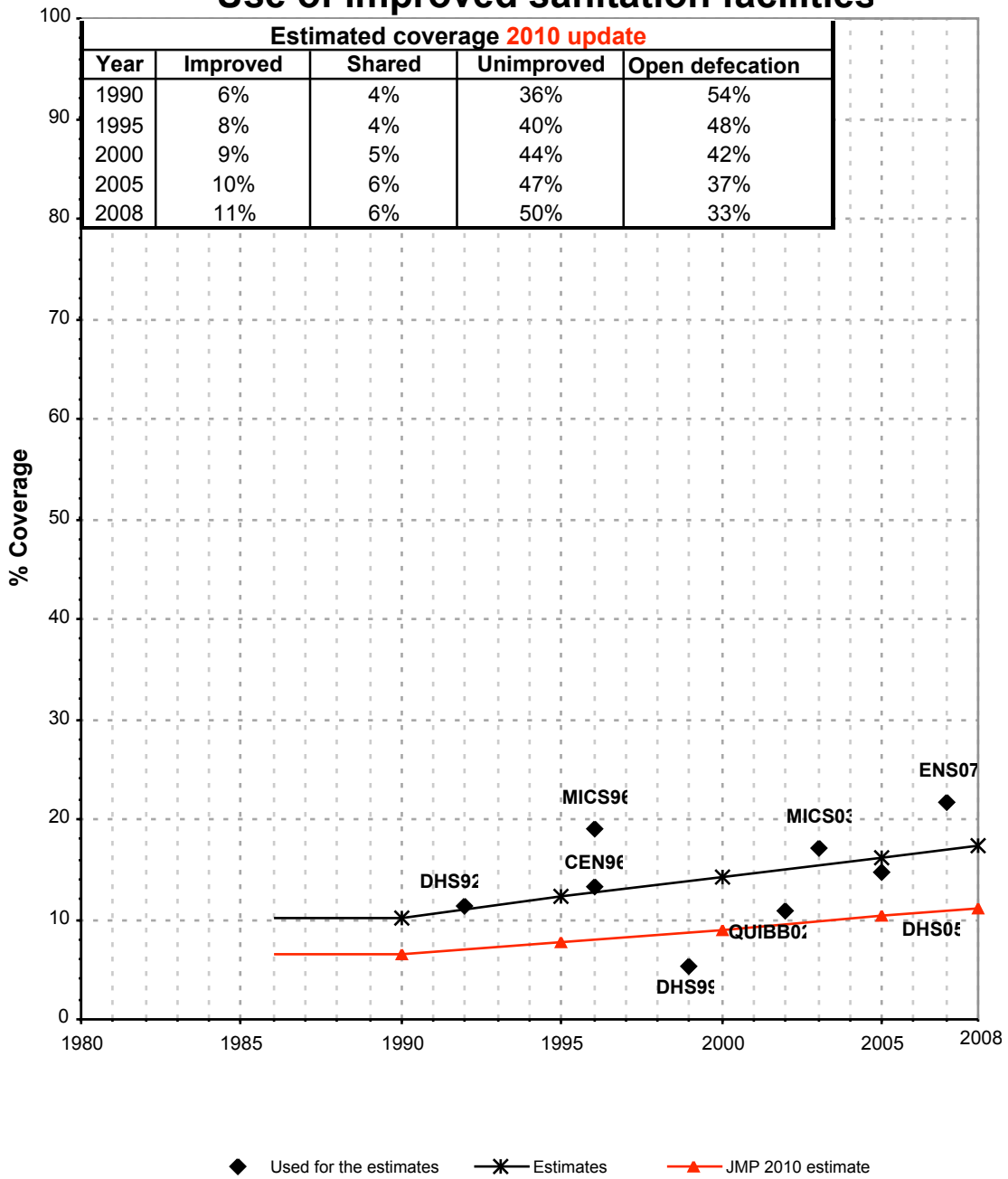
Use of sanitation facilities		QUIBB02			Guinea			Use of sanitation facilities		ENS07			Guinea						
Questionnaire Unifié sur les Indicateurs de Base de Bien-Etre					Enquete National Sur l'etat Nutritionnel et le suivi des principeaux indicateur de suivi de l'enfant														
Direction Nationale de la Statistique et de l'Informatique					2002					Ministere de l'Economie des Finances et du Plan et Direction Nationale de la Statistique					2007				
Original denomination	Classification	Urban	Rural	Total	Original denomination	Classification	Urban	Rural	Total	Original denomination	Classification	Urban	Rural	Total					
	Flush and pour flush	6.6	0.2			Flush and pour flush					Flush and pour flush	7.7	0.7	2.9					
	to piped sewer system					to piped sewer system					to piped sewer system								
	to septic tank					to septic tank					to septic tank								
	to pit					to pit					to pit								
	to unknown place/ not sure/DK					to unknown place/ not sure/DK					to unknown place/ not sure/DK								
	to elsewhere					to elsewhere					to elsewhere								
Chasse d'eau	Flush/toilets	6.6	0.2		Chasse d'eau	Flush/toilets				Chasse d'eau	Flush/toilets	7.7	0.7	2.9					
	to piped sewer system					to piped sewer system					to piped sewer system								
	to septic tank					to septic tank					to septic tank								
	to pit					to pit					to pit								
	to unknown place/ not sure/DK					to unknown place/ not sure/DK					to unknown place/ not sure/DK								
	to elsewhere					to elsewhere					to elsewhere								
	Private flush/toilet					Private flush/toilet					Private flush/toilet								
	to piped sewer system					to piped sewer system					to piped sewer system								
	to septic tank					to septic tank					to septic tank								
	to pit					to pit					to pit								
	to unknown place/ not sure/DK					to unknown place/ not sure/DK					to unknown place/ not sure/DK								
	to elsewhere					to elsewhere					to elsewhere								
	Public/shared flush/toilet					Public/shared flush/toilet					Public/shared flush/toilet								
	to piped sewer system					to piped sewer system					to piped sewer system								
	to septic tank					to septic tank					to septic tank								
	to pit					to pit					to pit								
	to unknown place/ not sure/DK					to unknown place/ not sure/DK					to unknown place/ not sure/DK								
	to elsewhere					to elsewhere					to elsewhere								
	Latrines	91.7	58.1			Latrines	87.9	62.0	70.2		Latrines	87.9	62.0	70.2					
	Pour flush latrines					Pour flush latrines					Pour flush latrines								
	to piped sewer system					to piped sewer system					to piped sewer system								
	to septic tank					to septic tank					to septic tank								
	to pit					to pit					to pit								
	to unknown place/ not sure/DK					to unknown place/ not sure/DK					to unknown place/ not sure/DK								
	to elsewhere					to elsewhere					to elsewhere								
	Private pour flush latrine					Private pour flush latrine					Private pour flush latrine								
	to piped sewer system					to piped sewer system					to piped sewer system								
	to septic tank					to septic tank					to septic tank								
	to pit					to pit					to pit								
	to unknown place/ not sure/DK					to unknown place/ not sure/DK					to unknown place/ not sure/DK								
	to elsewhere					to elsewhere					to elsewhere								
	Public/shared pour flush latrine					Public/shared pour flush latrine					Public/shared pour flush latrine								
	to piped sewer system					to piped sewer system					to piped sewer system								
	to septic tank					to septic tank					to septic tank								
	to pit					to pit					to pit								
	to unknown place/ not sure/DK					to unknown place/ not sure/DK					to unknown place/ not sure/DK								
	to elsewhere					to elsewhere					to elsewhere								
	Dry latrines	91.7	58.1			Dry latrines	87.9	62.0	70.2		Dry latrines	87.9	62.0	70.2					
	Improved latrines	54.3	10.7			Improved latrines	67.5	21.1	35.7		Improved latrines	67.5	21.1	35.7					
Latrines ventilées améliorées	Ventilated Improved Pit latrine	1.2	0.4		Latrine ventilée Amelioree	Ventilated Improved Pit latrine	13.5	3.1	6.4		Ventilated Improved Pit latrine	13.5	3.1	6.4					
Latrines couvertes	Pit latrine with slab/covered latrine	53.2	10.3		Latrine dalle circulaire or carree	Pit latrine with slab/covered latrine	54.0	18.0	29.3		Pit latrine with slab/covered latrine	54.0	18.0	29.3					
	Traditional latrine					Traditional latrine					Traditional latrine								
Latrines non couvertes	Pit latrine without slab/open pit	36.2	47.2		Fosse/Latrine non couvert	Pit latrine without slab/open pit	20.4	40.9	34.5		Pit latrine without slab/open pit	20.4	40.9	34.5					
	Hanging toilet/hanging latrine					Hanging toilet/hanging latrine					Hanging toilet/hanging latrine								
Cuvette/seau	Bucket latrine	1.2	0.2			Bucket latrine					Bucket latrine								
	Other					Other					Other								
	Private Latrines					Private Latrines					Private Latrines								
	Ventilated Improved Pit latrine					Ventilated Improved Pit latrine					Ventilated Improved Pit latrine								
	Pit latrine with slab/covered latrine					Pit latrine with slab/covered latrine					Pit latrine with slab/covered latrine								
	Traditional latrine					Traditional latrine					Traditional latrine								
	Pit latrine without slab/open pit					Pit latrine without slab/open pit					Pit latrine without slab/open pit								
	Hanging toilet/hanging latrine					Hanging toilet/hanging latrine					Hanging toilet/hanging latrine								
	Bucket latrine					Bucket latrine					Bucket latrine								
	Other					Other					Other								
	Public/shared Latrines					Public/shared Latrines					Public/shared Latrines								
	Ventilated Improved Pit latrine					Ventilated Improved Pit latrine					Ventilated Improved Pit latrine								
	Pit latrine with slab/covered latrine					Pit latrine with slab/covered latrine					Pit latrine with slab/covered latrine								
	Traditional latrine					Traditional latrine					Traditional latrine								
	Pit latrine without slab/open pit					Pit latrine without slab/open pit					Pit latrine without slab/open pit								
	Hanging toilet/hanging latrine					Hanging toilet/hanging latrine					Hanging toilet/hanging latrine								
	Bucket latrine					Bucket latrine					Bucket latrine								
	Other					Other					Other								
	Composting toilets					Composting toilets					Composting toilets								
	Composting toilet (private)					Composting toilet (private)					Composting toilet (private)								
	Composting toilet (shared)					Composting toilet (shared)					Composting toilet (shared)								
	Other improved					Other improved					Other improved								
	Other					Other					Other								
	Other					Other					Other								
Aucun	No facility, bush, field	1.3	37.6		Pas de toilettes/Nature	No facility, bush, field	2.3	31.8	22.5		No facility, bush, field	1.5	5.3	4.1					
	Other unimproved	0.4	4.0			Other unimproved	1.5	5.3	4.1		Other unimproved	1.5	5.3	4.1					
Autre	Other	0.4	4.0		Autre	Other	1.5	5.3	4.1		Other	1.5	5.3	4.1					
	Other					Other					Other								
	DK/missing information				ND	DK/missing information	0.5	0.2	0.3		DK/missing information	0.5	0.2	0.3					
	Total	100.0	100.0			Total	99.9	100.0	100.0		Total	99.9	100.0	100.0					
Calculations					Calculations					Calculations									
Estimations					Estimations					Estimations									
	Access to improved sanitation :	61%	11%			Access to improved sanitation :	75%	22%	39%		Access to improved sanitation :	75%	22%	39%					
	Access to sewerage connections :					Access to sewerage connections :					Access to sewerage connections :								
	Used for the estimates :	Yes	Yes			Used for the estimates :	Yes	Yes			Used for the estimates :	Yes	Yes						
	Used for the estimates :	Yes	Yes			Used for the estimates :	Yes	Yes			Used for the estimates :	Yes	Yes						
Ratios	Shared improved facilities/all improved facilities					Shared improved facilities/all improved facilities					Shared improved facilities/all improved facilities								
	Improved latrine / All latrines	59%	18%			Improved latrine / All latrines	77%	34%	51%		Improved latrine / All latrines	77%	34%	51%					
	Covered dry latrines / All dry latrines	58%	18%			Covered dry latrines / All dry latrines	61%	29%			Covered dry latrines / All dry latrines	61%	29%						
	VIP / All latrines	1%	1%			VIP / All latrines	15%	5%			VIP / All latrines	15%	5%						
	Traditional latrines / All latrines					Traditional latrines / All latrines					Traditional latrines / All latrines								
	Improved + traditional latrines / All latrines					Improved + traditional latrines / All latrines					Improved + traditional latrines / All latrines								
	Sewerage connection among flush/pour flush					Sewerage connection among flush/pour flush					Sewerage connection among flush/pour flush								
	Sewerage connection among flush					Sewerage connection among flush					Sewerage connection among flush								
	Number of people covered by the survey:					Number of people covered by the survey:					Number of people covered by the survey:								
	Number of households covered by the survey:					Number of households covered by the survey:					Number of households covered by the survey:								
	Total population:					Total population:					Total population:								
Comments					Comments					Comments									

Guinea			SANITATION															
			URBAN								RURAL							
			Sewer connection		Total		Open defecation		Shared		Sewer connection		Total		Open defecation		Shared	
Source	Code	Year	Used	Not used	Used	Not used	Used	Not used	Used	Not used	Used	Not used	Used	Not used	Used	Not used	Used	Not used
Demographic and Health Survey	DHS92	1992	0.0		40.9		5.9				0.0		11.4		48.0			
National census	CEN96	1996	0.0		57.2		3.6		54.0		0.0		13.3		56.9		19.0	
Multiple Indicator Cluster Survey	MICS96	1996	0.0		54.1		5.0				0.0		19.0		38.6			
Demographic and Health Survey	DHS99	1999	0.0		55.3		3.4				0.0		5.2		50.9			
Global Water Supply and Sanitation Assessment 2000.	JMP99	1999		8.0		93.9						0.0		40.6				
Multiple Indicator Cluster Survey	MICS03	2003	0.0		77.4		1.8				0.0		17.0		33.7			
Demographic and Health Survey	DHS05	2005	0.0		59.9		2.2		56.5		0.0		14.7		41.5		54.0	
Enquête prioritaire	EP91	1991																
Questionnaire Unifié sur les Indicateurs de Base de Bien-Etre	QUIBB02	2002			60.9		1.3						11.0		37.6			
Enquete Nacional Sur L'etat Nutritionel et le suivi des principeaux indicateur de suivi de l'enfant	ENS07	2007			75.2		2.3						21.8		31.8			

Guinea - urban - Use of improved sanitation facilities



Guinea - rural - Use of improved sanitation facilities



Sanitation

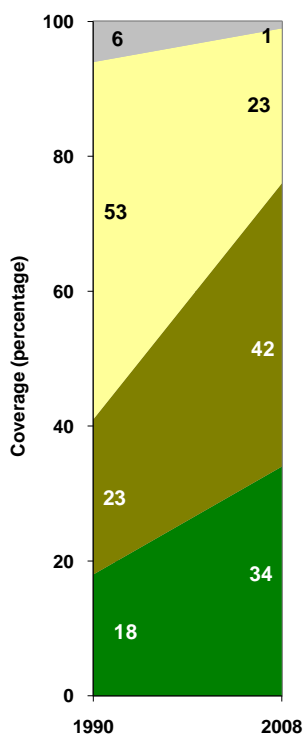
Guinea	Sanitation coverage estimates					
	Urban (%)		Rural (%)		Total (%)	
	1990	2008	1990	2008	1990	2008
Improved facilities	18	34	6	11	9	19
Shared facilities	23	42	4	6	9	18
Unimproved facilities	53	23	36	50	41	41
Open defecation	6	1	54	33	41	22

Source: WHO/UNICEF JMP, 2010

Guinea	Urban		Rural		Total	
	1990	2008	1990	2008	1990	2008
Population (x1000)	1,723	3,379	4,424	6,454	6,147	9,833

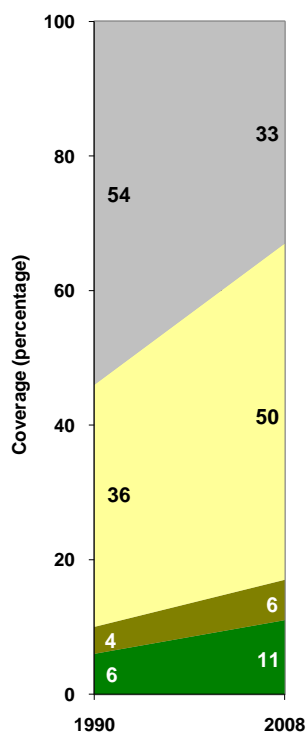
Source: UN / Population Division, 2008

Urban sanitation trends



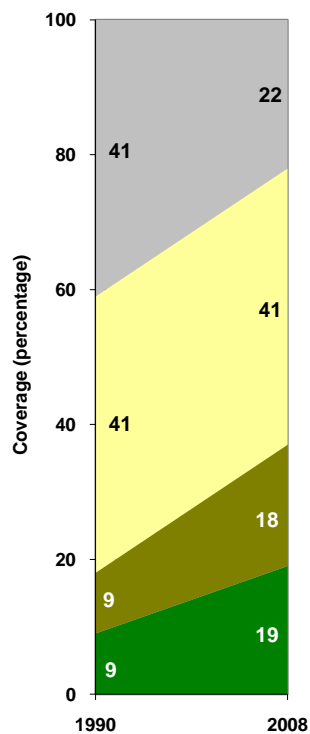
■ Open defecation
 ■ Unimproved facilities
 ■ Shared facilities
 ■ Improved facilities

Rural sanitation trends



■ Open defecation
 ■ Unimproved facilities
 ■ Shared facilities
 ■ Improved facilities

Total sanitation trends



■ Open defecation
 ■ Unimproved facilities
 ■ Shared facilities
 ■ Improved facilities