

WHO / UNICEF

Joint Monitoring Programme
for Water Supply and Sanitation

Estimates for the use of

**Improved Drinking-Water Sources
and Improved Sanitation Facilities**

Updated March 2010

childinfo.org

Use of sanitation facilities		LSS88		Ghana		
Living standards Survey				1988		
Original denomination	Classification	Urban	Rural	Total		
	Flush and pour flush	13.0	0.9	4.8		
	to piped sewer system					
	to septic tank					
	to pit					
	to unknown place/ not sure/DK					
	to elsewhere					
Flush toilet*	Flush/toilets	13.0	0.9	4.8		
	to piped sewer system					
	to septic tank					
	to pit					
	to unknown place/ not sure/DK					
	to elsewhere					
	Private flush/toilet					
	to piped sewer system					
	to septic tank					
	to pit					
	to unknown place/ not sure/DK					
	to elsewhere					
	Public/shared flush/toilet					
	to piped sewer system					
	to septic tank					
	to pit					
	to unknown place/ not sure/DK					
	to elsewhere					
	Latrines	66.8	72.1	70.4		
	Pour flush latrines					
	to piped sewer system					
	to septic tank					
	to pit					
	to unknown place/ not sure/DK					
	to elsewhere					
	Private pour flush latrine					
	to piped sewer system					
	to septic tank					
	to pit					
	to unknown place/ not sure/DK					
	to elsewhere					
	Public/shared pour flush latrine					
	to piped sewer system					
	to septic tank					
	to pit					
	to unknown place/ not sure/DK					
	to elsewhere					
	Dry latrines	66.8	72.1	70.4		
	Improved latrines					
	Ventilated Improved Pit latrine					
	Pit latrine with slab/covered latrine					
Pit latrine	Traditional latrine	41.2	64.8	57.2		
	Pit latrine without slab/open pit					
	Hanging toilet/hanging latrine					
Pan/ Bucket	Bucket latrine	25.6	7.3	13.2		
	Other					
	Private Latrines					
	Ventilated Improved Pit latrine					
	Pit latrine with slab/covered latrine					
	Traditional latrine					
	Pit latrine without slab/open pit					
	Hanging toilet/hanging latrine					
	Bucket latrine					
	Other					
	Public/shared Latrines					
	Ventilated Improved Pit latrine					
	Pit latrine with slab/covered latrine					
	Traditional latrine					
	Pit latrine without slab/open pit					
	Hanging toilet/hanging latrine					
	Bucket latrine					
	Other					
	Composting toilets					
	Composting toilet (private)					
	Composting toilet (shared)					
	Other improved					
	Other					
	Other					
No toilet	No facility, bush, field	10.5	24.6	20.0		
	Other unimproved	9.7	2.5	4.8		
Other	Other	9.7	2.5	4.8		
	Other					
	DK/missing information					
	Total	100.0	100.1	100.0		
Calculations						
Estimations	traditional pit latrines considered improved based on ratio CWIC97	33.1	20.4			
	SC, based on WHS03	7.3	0.8			
Access to improved sanitation :		46%	21%			
Access to sewerage connections :		7%	1%			
	Used for the estimates:	Yes	Yes			
	Used for the estimates:	Yes	Yes			
Ratios	Shared improved facilities/all improved facilities					
	Improved latrine / All latrines					
	Covered dry latrines / All dry latrines					
	VIP / All latrines					
	Traditional latrines / All latrines	62%	90%	81%		
	Improved + traditional latrines / All latrines					
	Sewerage connection among flush/pour flush					
	Sewerage connection among flush					
	Number of people covered by the survey:					
	Number of households covered by the survey:					
	Total population:					
Comments						

Use of sanitation facilities		DHS88		Ghana	
Demographic and Health Survey				1988	
Original denomination	Classification	Urban	Rural	Total	
	Flush and pour flush	17.5	1.2		
	to piped sewer system				
	to septic tank				
	to pit				
	to unknown place/ not sure/DK				
	to elsewhere				
Domestic Connection*	Flush/toilets	17.5	1.2		
	to piped sewer system				
	to septic tank				
	to pit				
	to unknown place/ not sure/DK				
	to elsewhere				
	Private flush/toilet				
	to piped sewer system				
	to septic tank				
	to pit				
	to unknown place/ not sure/DK				
	to elsewhere				
	Public/shared flush/toilet				
	to piped sewer system				
	to septic tank				
	to pit				
	to unknown place/ not sure/DK				
	to elsewhere				
	Latrines	67.3	67.2		
	Pour flush latrines				
	to piped sewer system				
	to septic tank				
	to pit				
	to unknown place/ not sure/DK				
	to elsewhere				
	Private pour flush latrine				
	to piped sewer system				
	to septic tank				
	to pit				
	to unknown place/ not sure/DK				
	to elsewhere				
	Public/shared pour flush latrine				
	to piped sewer system				
	to septic tank				
	to pit				
	to unknown place/ not sure/DK				
	to elsewhere				
	Dry latrines	67.3	67.2		
	Improved latrines	6.4	1.5		
KVIP	Ventilated Improved Pit latrine	6.4	1.5		
	Pit latrine with slab/covered latrine				
Pit	Traditional latrine	32.6	58.9		
	Pit latrine without slab/open pit				
	Hanging toilet/hanging latrine				
Pan	Bucket latrine	28.4	6.8		
	Other				
	Private Latrines				
	Ventilated Improved Pit latrine				
	Pit latrine with slab/covered latrine				
	Traditional latrine				
	Pit latrine without slab/open pit				
	Hanging toilet/hanging latrine				
	Bucket latrine				
	Other				
	Public/shared Latrines				
	Ventilated Improved Pit latrine				
	Pit latrine with slab/covered latrine				
	Traditional latrine				
	Pit latrine without slab/open pit				
	Hanging toilet/hanging latrine				
	Bucket latrine				
	Other				
	Composting toilets				
	Composting toilet (private)				
	Composting toilet (shared)				
	Other improved				
	Other				
	Other				
No Facilities	No facility, bush, field	14.9	31.2		
	Other unimproved	0.2	0.4		
Other	Other	0.2	0.4		
	Other				
	DK/missing information				
	Total	100.0	100.0		
Calculations					
Estimations	traditional pit latrines considered improved based on ratio CWIC97	26.2	18.5		
	SC, based on WHS03	9.8	1.0		
Access to improved sanitation :		50%	21%		
Access to sewerage connections :		10%	1%		
	Used for the estimates:	Yes	Yes		
	Used for the estimates:	Yes	Yes		
Ratios	Shared improved facilities/all improved facilities				
	Improved latrine / All latrines	9%	2%		
	Covered dry latrines / All dry latrines				
	VIP / All latrines	9%	2%		
	Traditional latrines / All latrines	48%	88%		
	Improved + traditional latrines / All latrines	58%	90%		
	Sewerage connection among flush/pour flush				
	Sewerage connection among flush				
	Number of people covered by the survey:				
	Number of households covered by the survey:				
	Total population:				
Comments					

Use of sanitation facilities		DHS93		Ghana	
Demographic and Health Survey				1993	
Original denomination	Classification	Urban	Rural	Total	
	Flush and pour flush	15.6	0.9		
	to piped sewer system				
	to septic tank				
	to pit				
	to unknown place/ not sure/DK				
	to elsewhere				
	Flush/toilets	15.6	0.9		
	to piped sewer system				
	to septic tank				
	to pit				
	to unknown place/ not sure/DK				
	to elsewhere				
Own Flush Toilet	Private flush/toilet	10.3	0.5		
	to piped sewer system				
	to septic tank				
	to pit				
	to unknown place/ not sure/DK				
	to elsewhere				
Shared Flush Toilet	Public/shared flush/toilet	5.3	0.4		
	to piped sewer system				
	to septic tank				
	to pit				
	to unknown place/ not sure/DK				
	to elsewhere				
	Latrines	76.2	68.4		
	Pour flush latrines				
	to piped sewer system				
	to septic tank				
	to pit				
	to unknown place/ not sure/DK				
	to elsewhere				
	Private pour flush latrine				
	to piped sewer system				
	to septic tank				
	to pit				
	to unknown place/ not sure/DK				
	to elsewhere				
	Public/shared pour flush latrine				
	to piped sewer system				
	to septic tank				
	to pit				
	to unknown place/ not sure/DK				
	to elsewhere				
	Dry latrines	76.2	68.4		
	Improved latrines	27.8	7.2		
VIP	Ventilated Improved Pit latrine	27.8	7.2		
	Pit latrine with slab/covered latrine				
Traditional Pit Latrine	Traditional latrine	29.2	59.5		
	Pit latrine without slab/open pit				
	Hanging toilet/hanging latrine				
Bucket/Fan	Bucket latrine	19.2	1.7		
	Other				
	Private Latrines				
	Ventilated Improved Pit latrine				
	Pit latrine with slab/covered latrine				
	Traditional latrine				
	Pit latrine without slab/open pit				
	Hanging toilet/hanging latrine				
	Bucket latrine				
	Other				
	Public/shared Latrines				
	Ventilated Improved Pit latrine				
	Pit latrine with slab/covered latrine				
	Traditional latrine				
	Pit latrine without slab/open pit				
	Hanging toilet/hanging latrine				
	Bucket latrine				
	Other				
	Composting toilets				
	Composting toilet (private)				
	Composting toilet (shared)				
	Other improved				
	Other				
	Other				
No Facilities/Bush	No facility, bush, field	8.3	30.6		
	Other unimproved				
	Other				
	Other				
	DK/missing information				
	Total	100.1	99.9		
Calculations					
Estimations	traditional pit latrines considered improved based on ratio CWIC97	23.4	18.7		
	SC, based on WHS03	8.8	0.8		
Access to improved sanitation :		67%	27%		
Access to sewerage connections :		9%	1%		
	Used for the estimates	Yes	Yes		
	Used for the estimates	Yes	Yes		
Ratios	Shared improved facilities/all improved facilities				
	Improved latrine / All latrines	36%	11%		
	Covered dry latrines / All dry latrines				
	VIP / All latrines	36%	11%		
	Traditional latrines / All latrines	38%	87%		
	Improved + traditional latrines / All latrines	75%	98%		
	Sewerage connection among flush/pour flush				
	Sewerage connection among flush				
	Number of people covered by the survey:				
	Number of households covered by the survey:				
	Total population:				
Comments					

Use of sanitation facilities		MICS95		Ghana		
Multiple Indicator Cluster Survey				1995		
Original denomination	Classification	Urban	Rural	Total		
	Flush and pour flush	50.0	5.0	22.0		
	to piped sewer system					
	to septic tank	29.0	3.0	13.0		
	to pit					
	to unknown place/ not sure/DK	21.0	2.0	9.0		
	to elsewhere					
	Flush/toilets	50.0	5.0	22.0		
	to piped sewer system					
Septic tank	to septic tank	29.0	3.0	13.0		
	to pit					
Water Closet *	to unknown place/ not sure/DK	21.0	2.0	9.0		
	to elsewhere					
	Private flush/toilet					
	to piped sewer system					
	to septic tank					
	to pit					
	to unknown place/ not sure/DK					
	to elsewhere					
	Public/shared flush/toilet					
	to piped sewer system					
	to septic tank					
	to pit					
	to unknown place/ not sure/DK					
	to elsewhere					
	Latrines	45.0	61.0	56.0		
	Pour flush latrines					
	to piped sewer system					
	to septic tank					
	to pit					
	to unknown place/ not sure/DK					
	to elsewhere					
	Private pour flush latrine					
	to piped sewer system					
	to septic tank					
	to pit					
	to unknown place/ not sure/DK					
	to elsewhere					
	Public/shared pour flush latrine					
	to piped sewer system					
	to septic tank					
	to pit					
	to unknown place/ not sure/DK					
	to elsewhere					
	Dry latrines	45.0	61.0	56.0		
	Improved latrines	15.0	8.0	11.0		
VIP/KVIP Latrine	Ventilated Improved Pit latrine	15.0	8.0	11.0		
	Pit latrine with slab/covered latrine					
Pit latrine	Traditional latrine	8.0	52.0	36.0		
	Pit latrine without slab/open pit					
	Hanging toilet/hanging latrine					
Pan/bucket latrine	Bucket latrine	22.0	1.0	9.0		
	Other					
	Private Latrines					
	Ventilated Improved Pit latrine					
	Pit latrine with slab/covered latrine					
	Traditional latrine					
	Pit latrine without slab/open pit					
	Hanging toilet/hanging latrine					
	Bucket latrine					
	Other					
	Public/shared Latrines					
	Ventilated Improved Pit latrine					
	Pit latrine with slab/covered latrine					
	Traditional latrine					
	Pit latrine without slab/open pit					
	Hanging toilet/hanging latrine					
	Bucket latrine					
	Other					
	Composting toilets					
	Composting toilet (private)					
	Composting toilet (shared)					
	Other improved					
	Other					
	Other					
No Facilities	No facility, bush, field	5.0	34.0	23.0		
	Other unimproved					
	Other					
	Other					
	DK/missing information					
	Total	100.0	100.0	101.0		
Calculations						
Estimations	traditional pit latrines considered improved based on ratio CWIC97	6.4	16.3			
	SC, based on WHS03	28.2	4.2			
Access to improved sanitation :		71%	29%			
Access to sewerage connections :		28%	4%			
	Used for the estimates:	No	No			
	Used for the estimates:	No	No			
Ratios	Shared improved facilities/all improved facilities					
	Improved latrine / All latrines	33%	13%	20%		
	Covered dry latrines / All dry latrines					
	VIP / All latrines	33%	13%	20%		
	Traditional latrines / All latrines	18%	85%	64%		
	Improved + traditional latrines / All latrines	51%	98%	84%		
	Sewerage connection among flush/pour flush					
	Sewerage connection among flush					
	Number of people covered by the survey:					
	Number of households covered by the survey:					
	Total population:					
Comments						

Use of sanitation facilities		DHS98		Ghana	
Demographic and Health Survey				1998	
Original denomination	Classification	Urban	Rural	Total	
	Flush and pour flush	18.3	2.1		
	to piped sewer system				
	to septic tank				
	to pit				
	to unknown place/ not sure/DK				
	to elsewhere				
	Flush/toilets	18.3	2.1		
	to piped sewer system				
	to septic tank				
	to pit				
	to unknown place/ not sure/DK				
	to elsewhere				
Own flush toilet	Private flush/toilet	10.5	1.2		
	to piped sewer system				
	to septic tank				
	to pit				
	to unknown place/ not sure/DK				
	to elsewhere				
Share flush toilet	Public/shared flush/toilet	7.8	0.9		
	to piped sewer system				
	to septic tank				
	to pit				
	to unknown place/ not sure/DK				
	to elsewhere				
	Latrines	72.3	71.3		
	Pour flush latrines				
	to piped sewer system				
	to septic tank				
	to pit				
	to unknown place/ not sure/DK				
	to elsewhere				
	Private pour flush latrine				
	to piped sewer system				
	to septic tank				
	to pit				
	to unknown place/ not sure/DK				
	to elsewhere				
	Public/shared pour flush latrine				
	to piped sewer system				
	to septic tank				
	to pit				
	to unknown place/ not sure/DK				
	to elsewhere				
	Dry latrines	72.3	71.3		
	Improved latrines	36.9	18.2		
Ventilated improved pit toilet	Ventilated Improved Pit latrine	36.9	18.2		
	Pit latrine with slab/covered latrine				
Traditional pit toilet	Traditional latrine	21.7	50.8		
	Pit latrine without slab/open pit				
	Hanging toilet/hanging latrine				
Bucket/pan	Bucket latrine	13.7	2.3		
	Other				
	Private Latrines				
	Ventilated Improved Pit latrine				
	Pit latrine with slab/covered latrine				
	Traditional latrine				
	Pit latrine without slab/open pit				
	Hanging toilet/hanging latrine				
	Bucket latrine				
	Other				
	Public/shared Latrines				
	Ventilated Improved Pit latrine				
	Pit latrine with slab/covered latrine				
	Traditional latrine				
	Pit latrine without slab/open pit				
	Hanging toilet/hanging latrine				
	Bucket latrine				
	Other				
	Composting toilets				
	Composting toilet (private)				
	Composting toilet (shared)				
	Other improved				
	Other				
	Other				
No facility/bush	No facility, bush, field	9.4	26.6		
	Other unimproved				
	Other				
	Other				
	DK/missing information				
	Total	100.0	100.0		
Calculations					
Estimations	traditional pit latrines considered improved based on ratio CWIC97	17.4	16.0		
	SC, based on WHS03	10.3	1.8		
Access to improved sanitation :		73%	36%		
Access to sewerage connections :		10%	2%		
	Used for the estimates:	Yes	Yes		
	Used for the estimates:	Yes	Yes		
Ratios	Shared improved facilities/all improved facilities	51%	28%		
	Improved latrine / All latrines				
	Covered dry latrines / All dry latrines	51%	28%		
	VIP / All latrines	30%	71%		
	Traditional latrines / All latrines	81%	97%		
	Improved + traditional latrines / All latrines				
	Sewerage connection among flush/pour flush				
	Sewerage connection among flush				
	Number of people covered by the survey:				
	Number of households covered by the survey:				
	Total population:				
Comments					

Use of sanitation facilities		JMP99		Ghana	
Global Water Supply and Sanitation Assessment 2000.					
Water Supply and Sanitation Sector Questionnaire - 1999. Form 6 sent to WHO.				1999	
Original denomination	Classification	Urban	Rural	Total	
	Flush and pour flush	46.9	0.0	0.0	
Population served with household connections to conventional sewerage	to piped sewer system	46.9	0.0		
	to septic tank				
	to pit				
	to unknown place/ not sure/DK				
	to elsewhere				
	Flush/toilets				
	to piped sewer system				
	to septic tank				
	to pit				
	to unknown place/ not sure/DK				
	to elsewhere				
	Private flush/toilet				
	to piped sewer system				
	to septic tank				
	to pit				
	to unknown place/ not sure/DK				
	to elsewhere				
	Public/shared flush/toilet				
	to piped sewer system				
	to septic tank				
	to pit				
	to unknown place/ not sure/DK				
	to elsewhere				
	Latrines				
	Pour flush latrines				
	to piped sewer system				
	to septic tank				
	to pit				
	to unknown place/ not sure/DK				
	to elsewhere				
	Private pour flush latrine				
	to piped sewer system				
	to septic tank				
	to pit				
	to unknown place/ not sure/DK				
	to elsewhere				
	Public/shared pour flush latrine				
	to piped sewer system				
	to septic tank				
	to pit				
	to unknown place/ not sure/DK				
	to elsewhere				
	Dry latrines				
	Improved latrines				
	Ventilated Improved Pit latrine				
	Pit latrine with slab/covered latrine				
	Traditional latrine				
	Pit latrine without slab/open pit				
	Hanging toilet/hanging latrine				
	Bucket latrine				
	Private Latrines				
	Ventilated Improved Pit latrine				
	Pit latrine with slab/covered latrine				
	Traditional latrine				
	Pit latrine without slab/open pit				
	Hanging toilet/hanging latrine				
	Bucket latrine				
	Public/shared Latrines				
	Ventilated Improved Pit latrine				
	Pit latrine with slab/covered latrine				
	Traditional latrine				
	Pit latrine without slab/open pit				
	Hanging toilet/hanging latrine				
	Bucket latrine				
	Composting toilets				
	Composting toilet (private)				
	Composting toilet (shared)				
Population without household connections but served with other improved facilities	Other improved	40.0	15.0		
	Other				
	Other				
	No facility, bush, field				
Total population unserved	Other unimproved	13.1	85.0		
	Other				
	Other				
	DK/missing information				
	Total	100.0	100.0		
Calculations					
Estimations					
Access to improved plus shared sanitation:		87%	15%		
Access to sewerage connections :		47%	0%		
	Used for the estimates:	No	No		
	Used for the estimates:	No	No		
Ratios	Shared improved facilities/all improved facilities				
	Improved latrine / All latrines				
	Covered dry latrines / All dry latrines				
	VIP / All latrines				
	Traditional latrines / All latrines				
	Improved + traditional latrines / All latrines				
	Number of people covered by the survey:				
	Number of households covered by the survey:				
	Total population:	3935	8361		
Comments					

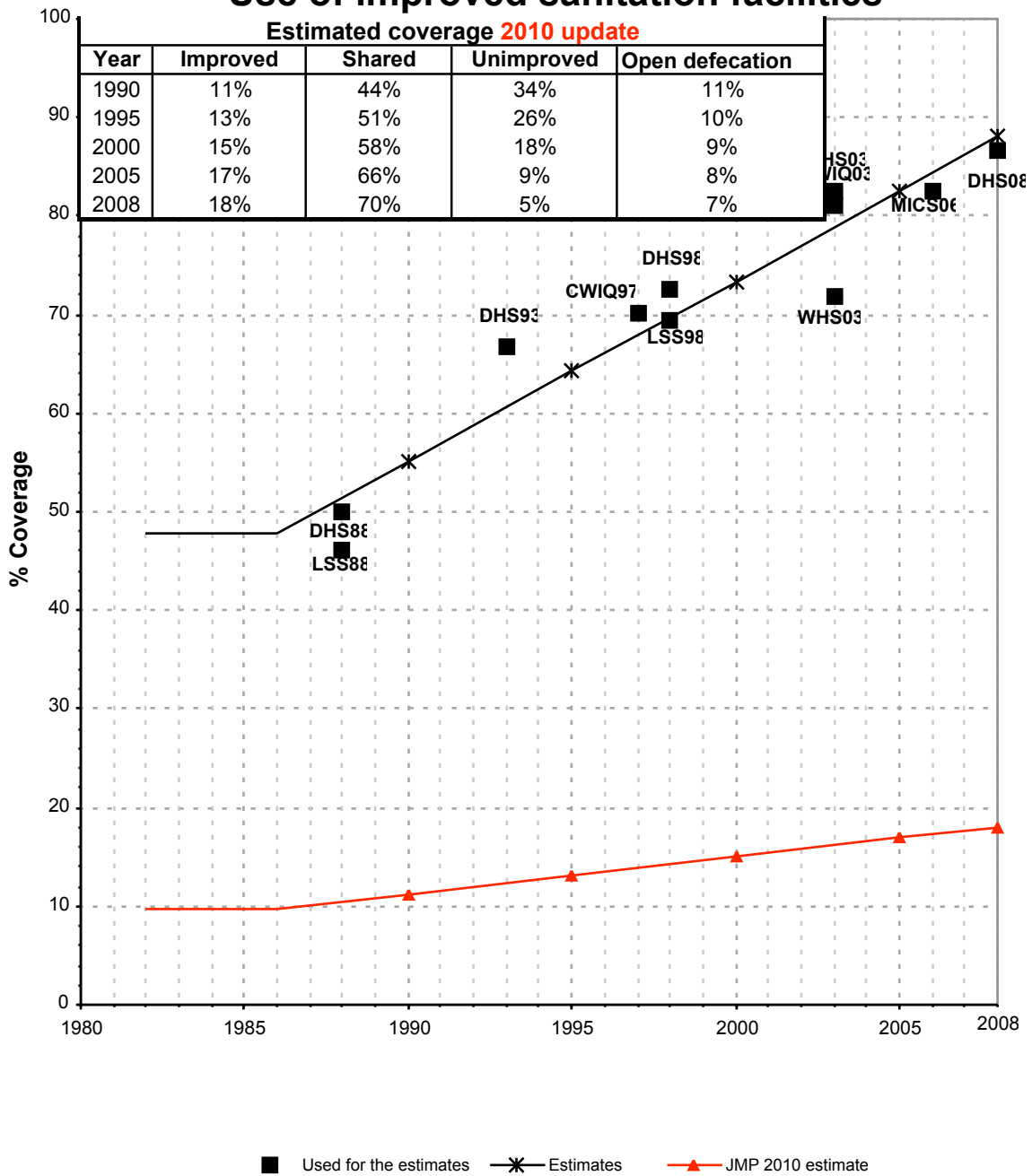
Use of sanitation facilities		DHS03		Ghana	
Demographic and Health Survey				2003	
Original denomination	Classification	Urban	Rural	Total	
	Flush and pour flush	21.2	1.7		
	to piped sewer system				
	to septic tank				
	to pit				
	to unknown place/ not sure/DK				
	to elsewhere				
Flush toilet	Flush/toilets	21.2	1.7		
	to piped sewer system				
	to septic tank				
	to pit				
	to unknown place/ not sure/DK				
	to elsewhere				
	Private flush/toilet				
	to piped sewer system				
	to septic tank				
	to pit				
	to unknown place/ not sure/DK				
	to elsewhere				
	Public/shared flush/toilet				
	to piped sewer system				
	to septic tank				
	to pit				
	to unknown place/ not sure/DK				
	to elsewhere				
	Latrines	72.0	67.7		
	Pour flush latrines				
	to piped sewer system				
	to septic tank				
	to pit				
	to unknown place/ not sure/DK				
	to elsewhere				
	Private pour flush latrine				
	to piped sewer system				
	to septic tank				
	to pit				
	to unknown place/ not sure/DK				
	to elsewhere				
	Public/shared pour flush latrine				
	to piped sewer system				
	to septic tank				
	to pit				
	to unknown place/ not sure/DK				
	to elsewhere				
	Dry latrines	72.0	67.7		
	Improved latrines	40.8	13.5		
Ventilated improved pit latrine	Ventilated Improved Pit latrine	40.8	13.5		
	Pit latrine with slab/covered latrine				
Traditional pit toilet	Traditional latrine	26.7	54.0		
	Pit latrine without slab/open pit				
	Hanging toilet/hanging latrine				
Bucket, pan	Bucket latrine	4.5	0.2		
	Other				
	Private Latrines				
	Ventilated Improved Pit latrine				
	Pit latrine with slab/covered latrine				
	Traditional latrine				
	Pit latrine without slab/open pit				
	Hanging toilet/hanging latrine				
	Bucket latrine				
	Other				
	Public/shared Latrines				
	Ventilated Improved Pit latrine				
	Pit latrine with slab/covered latrine				
	Traditional latrine				
	Pit latrine without slab/open pit				
	Hanging toilet/hanging latrine				
	Bucket latrine				
	Other				
	Composting toilets				
	Composting toilet (private)				
	Composting toilet (shared)				
	Other improved				
	Other				
	Other				
No facility, bush, field	No facility, bush, field	6.7	30.6		
	Other unimproved				
	Other				
	Other				
Missing	DK/missing information	0.1	0.1		
	Total	100.0	100.1		
Calculations					
Estimations	traditional pit latrines considered improved based on ratio CWIQ03	20.6	15.8		
	SC, based on WHS03	11.9	1.4		
Access to improved sanitation :		83%	31%		
Access to sewerage connections :		12%	1%		
	Used for the estimates:	Yes	Yes		
	Used for the estimates:	Yes	Yes		
Ratios	Shared improved facilities/all improved facilities	77.4%	84.8%		
	Improved latrine / All latrines	57%	20%		
	Covered dry latrines / All dry latrines				
	VIP / All latrines	57%	20%		
	Traditional latrines / All latrines	37%	80%		
	Improved + traditional latrines / All latrines	94%	100%		
	Sewerage connection among flush/pour flush				
	Sewerage connection among flush				
	Number of people covered by the survey:				
	Number of households covered by the survey:				
	Total population:				
Comments					

Use of sanitation facilities		CWIQ03		Ghana	
Core Welfare Indicator Questionnaire				2003	
Original denomination	Classification	Urban	Rural	Total	
	Flush and pour flush	20.6	1.0		
	to piped sewer system	20.6	1.0		
	to septic tank				
	to pit				
	to unknown place/ not sure/DK				
	to elsewhere				
	Flush/toilets	20.6	1.0		
Flush to piped sewer system	to piped sewer system	20.6	1.0		
	to septic tank				
	to pit				
	to unknown place/ not sure/DK				
	to elsewhere				
	Private flush/toilet				
	to piped sewer system				
	to septic tank				
	to pit				
	to unknown place/ not sure/DK				
	to elsewhere				
	Public/shared flush/toilet				
	to piped sewer system				
	to septic tank				
	to pit				
	to unknown place/ not sure/DK				
	to elsewhere				
	Latrines	69.2	65.7		
	Pour flush latrines				
	to piped sewer system				
	to septic tank				
	to pit				
	to unknown place/ not sure/DK				
	to elsewhere				
	Private pour flush latrine				
	to piped sewer system				
	to septic tank				
	to pit				
	to unknown place/ not sure/DK				
	to elsewhere				
	Public/shared pour flush latrine				
	to piped sewer system				
	to septic tank				
	to pit				
	to unknown place/ not sure/DK				
	to elsewhere				
	Dry latrines	69.2	65.7		
	Improved latrines	60.5	32.1		
Ventilated Improved Pit latrine (VIP)	Ventilated Improved Pit latrine	46.6	18.4		
Covered pit latrine	Pit latrine with slab/covered latrine	13.9	13.7		
	Traditional latrine				
Uncovered pit latrine	Pit latrine without slab/open pit	4.1	33.0		
	Hanging toilet/hanging latrine				
Pan or bucket	Bucket latrine	4.6	0.6		
	Other				
	Private Latrines				
	Ventilated Improved Pit latrine				
	Pit latrine with slab/covered latrine				
	Traditional latrine				
	Pit latrine without slab/open pit				
	Hanging toilet/hanging latrine				
	Bucket latrine				
	Other				
	Public/shared Latrines				
	Ventilated Improved Pit latrine				
	Pit latrine with slab/covered latrine				
	Traditional latrine				
	Pit latrine without slab/open pit				
	Hanging toilet/hanging latrine				
	Bucket latrine				
	Other				
	Composting toilets				
	Composting toilet (private)				
	Composting toilet (shared)				
	Other improved				
	Other				
	Other				
No facilities or bush or field	No facility, bush, field	9.6	31.9		
	Other unimproved	0.6	1.4		
Other	Other	0.6	1.4		
	Other				
	DK/missing information				
	Total	100.0	100.0		
Calculations					
Estimations					
	SC corrected for septic tank	-11.8	-0.8		
Access to improved sanitation :		81%	33%		
Access to sewerage connections :		9%	0%		
	Used for the estimates:	Yes	Yes		
	Used for the estimates:	Yes	Yes		
Ratios	Shared improved facilities/all improved facilities				
	Improved latrine / All latrines	87%	49%		
	Covered dry latrines / All dry latrines	20%	21%		
	VIP / All latrines	67%	28%		
	Improved / pit latrines	94%	49%		
	Covered / traditional latrines	77%	29%		
	Sewerage connection among flush/pour flush	100.0	100.0		
	Sewerage connection among flush	100.0	100.0		
	Number of people covered by the survey:				
	Number of households covered by the survey:				
	Total population:				
Comments					

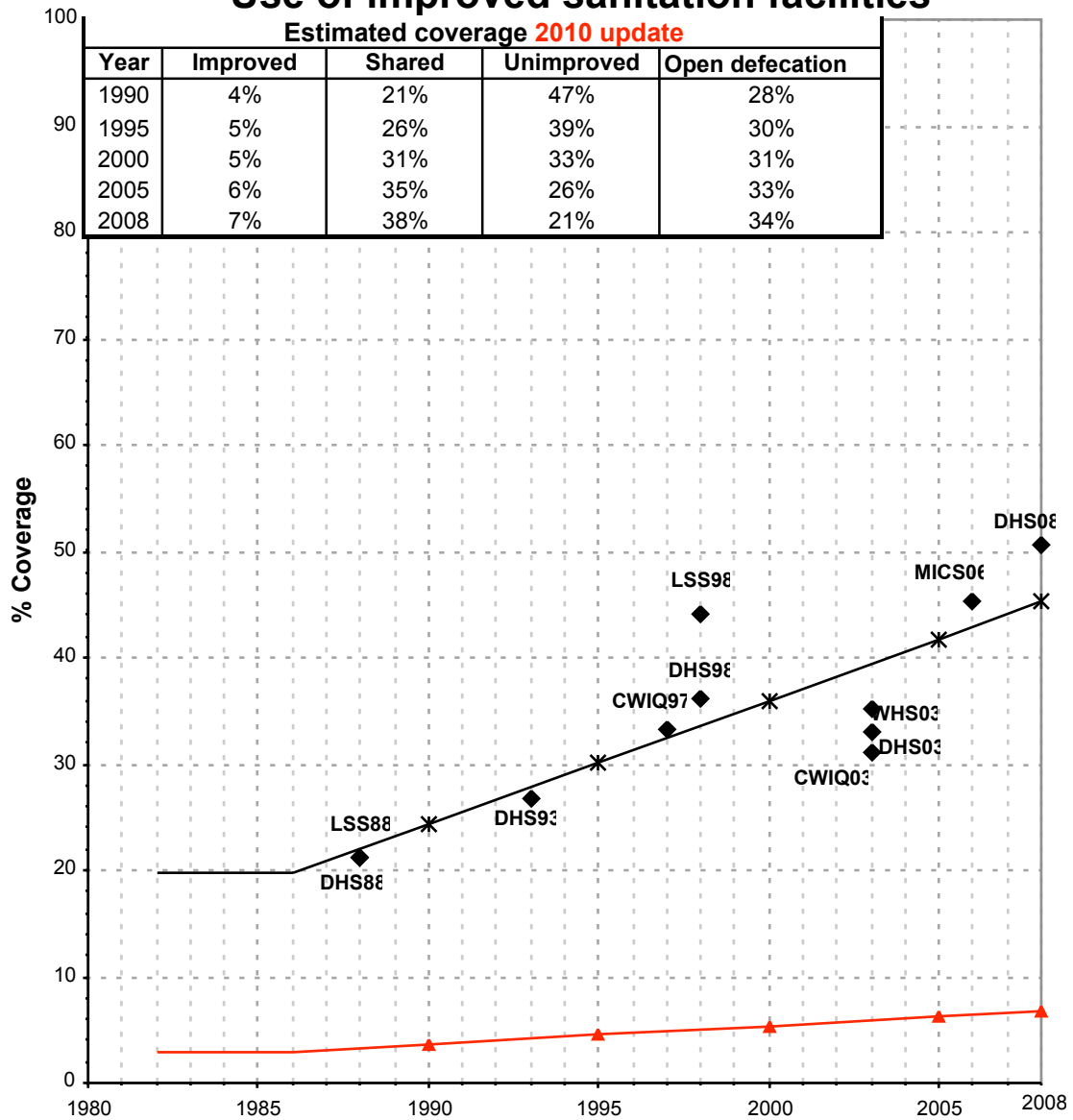
Use of sanitation facilities		DHS08		Ghana		
Demographic and Health Survey				2008		
Original denomination	Classification	Urban	Rural	Total		
	Flush and pour flush	28.3	3.0	14.1		
	to piped sewer system	3.8	0.7	2.0		
	to septic tank	20.0	1.7	9.7		
	to pit	4.4	0.6	2.3		
	to unknown place/ not sure/DK	0.0	0.0	0.0		
	to elsewhere	0.1	0.0	0.1		
	Flush/toilets	28.3	3.0	14.1		
Flush to piped sewer system	to piped sewer system	3.8	0.7	2.0		
Flush to septic tank	to septic tank	20.0	1.7	9.7		
Flush to pit (latrine)	to pit	4.4	0.6	2.3		
Flush to don't know where	to unknown place/ not sure/DK	0.0	0.0	0.0		
Flush to elsewhere	to elsewhere	0.1	0.0	0.1		
	Private flush/toilet					
	to piped sewer system					
	to septic tank					
	to pit					
	to unknown place/ not sure/DK					
	to elsewhere					
	Public/shared flush/toilet					
	to piped sewer system					
	to septic tank					
	to pit					
	to unknown place/ not sure/DK					
	to elsewhere					
	Latrines	64.3	61.1	62.5		
	Pour flush latrines					
	to piped sewer system					
	to septic tank					
	to pit					
	to unknown place/ not sure/DK					
	to elsewhere					
	Private pour flush latrine					
	to piped sewer system					
	to septic tank					
	to pit					
	to unknown place/ not sure/DK					
	to elsewhere					
	Public/shared pour flush latrine					
	to piped sewer system					
	to septic tank					
	to pit					
	to unknown place/ not sure/DK					
	to elsewhere					
	Dry latrines	64.3	61.1	62.5		
	Improved latrines	58.5	47.3	52.2		
Ventilated Improved Pit latrine (VIP)	Ventilated Improved Pit latrine	51.6	25.8	37.1		
Pit latrine with slab	Pit latrine with slab/covered latrine	6.9	21.5	15.1		
	Traditional latrine					
Pit latrine without slab/open pit	Pit latrine without slab/open pit	4.0	13.6	9.4		
	Hanging toilet/hanging latrine					
Bucket/pan toilet	Bucket latrine	1.8	0.2	0.9		
	Other					
	Private Latrines					
	Ventilated Improved Pit latrine					
	Pit latrine with slab/covered latrine					
	Traditional latrine					
	Pit latrine without slab/open pit					
	Hanging toilet/hanging latrine					
	Bucket latrine					
	Other					
	Public/shared Latrines					
	Ventilated Improved Pit latrine					
	Pit latrine with slab/covered latrine					
	Traditional latrine					
	Pit latrine without slab/open pit					
	Hanging toilet/hanging latrine					
	Bucket latrine					
	Other					
Composting toilet	Composting toilets	0.0	0.3	0.2		
	Composting toilet (private)					
	Composting toilet (shared)					
	Other improved					
	Other					
	Other					
No facilities or bush or field	No facility, bush, field	7.2	35.4	23.1		
	Other unimproved	0.0	0.0	0.0		
	Other	0.0	0.0	0.0		
	Other	0.0	0.0	0.0		
Missing	DK/missing information	0.1	0.1	0.1		
	Total	99.9	99.9	100.0		
Calculations						
Estimations						
Access to improved sanitation :		87%	51%	66%		
Access to sewerage connections :		4%	1%	2%		
Used for the estimates:		Yes	Yes			
Used for the estimates:		Yes	Yes			
Ratios	Shared improved facilities/all improved facilities	79.4%	84.0%			
	Improved latrine / All latrines	91%	77%	84%		
	Covered dry latrines / All dry latrines	11%	35%			
	VIP / All latrines	80%	42%			
	Traditional latrines / All latrines					
	Improved + traditional latrines / All latrines					
	Sewerage connection among flush/pour flush	13.4	23.3			
	Sewerage connection among flush	13.4	23.3			
Number of people covered by the survey:						
Number of households covered by the survey:						
Total population:						
Comments						

Ghana			SANITATION															
			URBAN								RURAL							
			Sewer connection		Total		Open defecation		Shared		Sewer connection		Total		Open defecation		Shared	
Source	Code	Year	Used	Not used	Used	Not used	Used	Not used	Used	Not used	Used	Not used	Used	Not used	Used	Not used	Used	Not used
Living standards Survey	LSS88	1988	7.3		46.0		10.5				0.8		21.3		24.6			
Demographic and Health Survey	DHS88	1988	9.8		50.0		14.9				1.0		21.2		31.2			
Demographic and Health Survey	DHS93	1993	8.8		66.8		8.3				0.8		26.8		30.6			
Multiple Indicator Cluster Survey	MICS95	1995		28.2		71.4		5.0				4.2		29.3		34.0		
Demographic and Health Survey	DHS98	1998	10.3		72.6		9.4				1.8		36.3		26.6			
Global Water Supply and Sanitation Assessment 2000.	JMP99	1999		46.9		86.9					0.0		15.0					
Demographic and Health Survey	DHS03	2003	11.9		82.6		6.7		77.4		1.4		31.0		30.6		84.8	
World Health Survey	WHS03	2003	15.6		71.8		9.7				3.5		35.3		32.0			
Core Welfare Indicator Questionnaire	CWIQ03	2003	8.8		81.1		9.6				0.2		33.1		31.9			
Multiple Indicator Cluster Survey	MICS06	2006	3.8		82.5		8.7		81.8		0.6		45.2		35.5		86.1	
CORE WELFARE INDICATORS QUESTIONNAIRE (CWIQ)	CWIQ97	1997			70.1		8.9						33.2		30.0			
LIVING STANDARDS SURVEY 4	LSS98	1998			69.5		8.8						44.1		29.8			
Demographic and Health Survey	DHS08	2008	3.8		86.7		7.2		79.4		0.7		50.6		35.4		84.0	

Ghana - urban - Use of improved sanitation facilities



Ghana - rural - Use of improved sanitation facilities



Sanitation

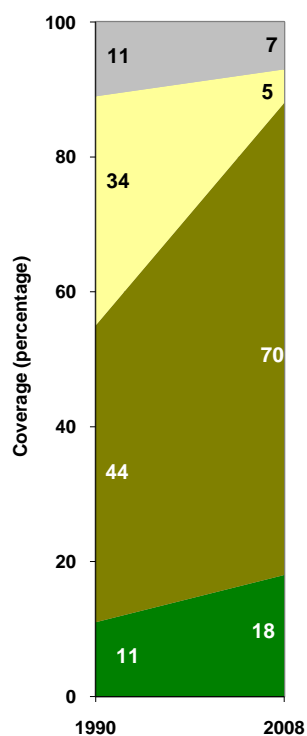
Ghana	Sanitation coverage estimates					
	Urban (%)		Rural (%)		Total (%)	
	1990	2008	1990	2008	1990	2008
Improved facilities	11	18	4	7	7	13
Shared facilities	44	70	21	38	29	54
Unimproved facilities	34	5	47	21	42	13
Open defecation	11	7	28	34	22	20

Source: WHO/UNICEF JMP, 2010

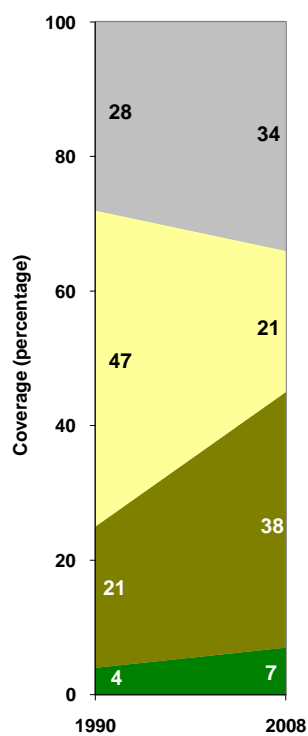
Ghana	Urban		Rural		Total	
	1990	2008	1990	2008	1990	2008
Population (x1000)	5,454	11,676	9,513	11,675	14,968	23,351

Source: UN / Population Division, 2008

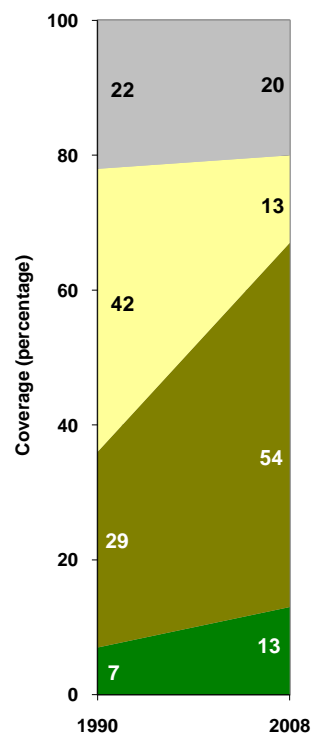
Urban sanitation trends



Rural sanitation trends



Total sanitation trends



■ Open defecation
 ■ Unimproved facilities
 ■ Shared facilities
 ■ Improved facilities

■ Open defecation
 ■ Unimproved facilities
 ■ Shared facilities
 ■ Improved facilities

■ Open defecation
 ■ Unimproved facilities
 ■ Shared facilities
 ■ Improved facilities