

WHO / UNICEF

Joint Monitoring Programme
for Water Supply and Sanitation

Estimates for the use of

**Improved Drinking-Water Sources
and Improved Sanitation Facilities**

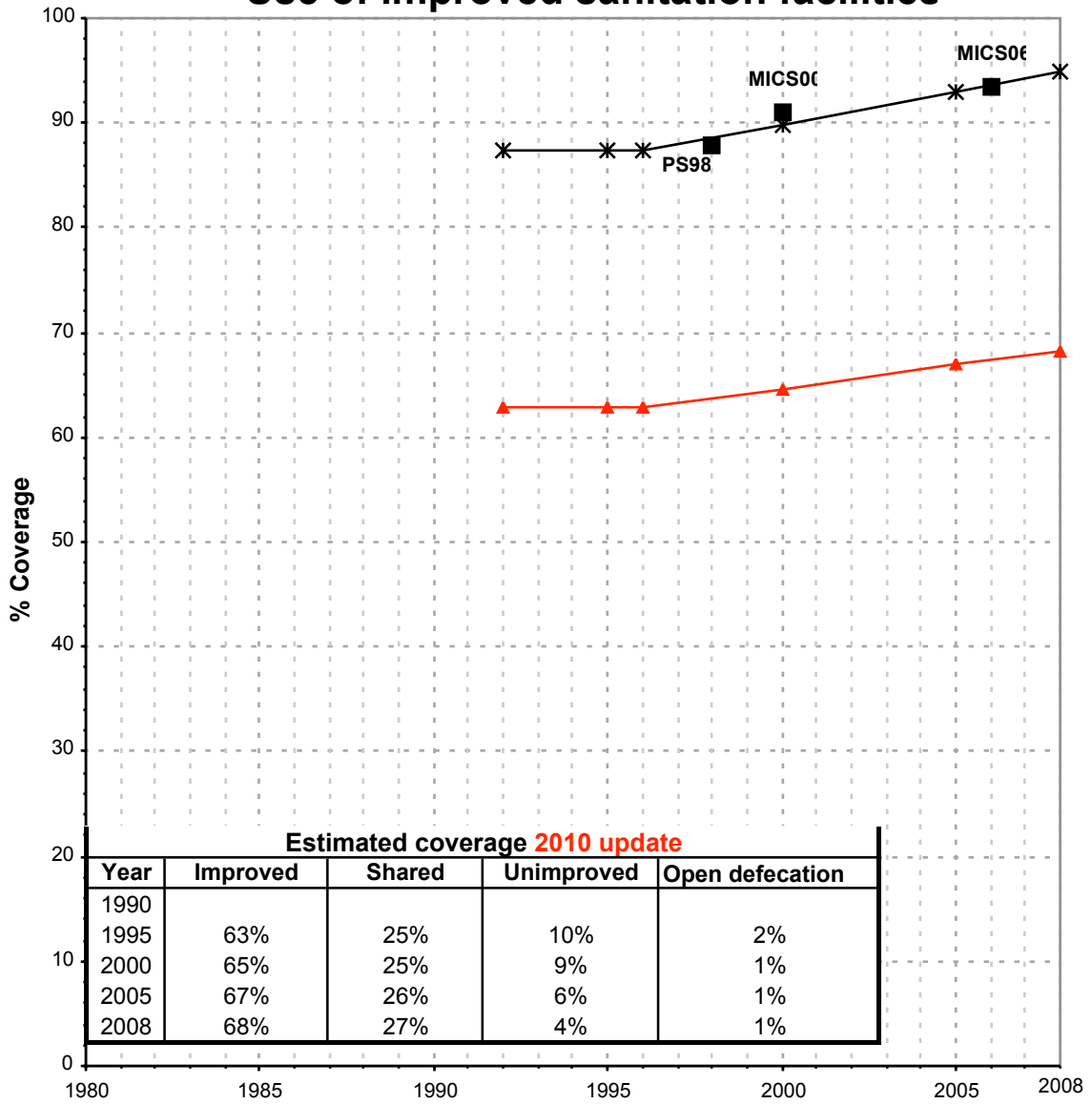
Updated March 2010

childinfo.org

Use of sanitation facilities		MICS00		Gambia	
Multiple Indicator Cluster Survey					
Government of The Gambia in collaboration with UNICEF.				2000	
Original denomination	Classification	Urban	Rural	Total	
	Flush and pour flush	29.7	2.6		
	to piped sewer system				
	to septic tank				
	to pit				
	to unknown place/ not sure/DK				
	to elsewhere				
Flush to sewage system/septic tank	Flush/toilets	19.1	0.6		
	to piped sewer system				
	to septic tank				
	to pit				
	to unknown place/ not sure/DK				
	to elsewhere				
	Private flush/toilet				
	to piped sewer system				
	to septic tank				
	to pit				
	to unknown place/ not sure/DK				
	to elsewhere				
	Public/shared flush/toilet				
	to piped sewer system				
	to septic tank				
	to pit				
	to unknown place/ not sure/DK				
	to elsewhere				
	Latrines	78.9	87.2		
Pour flush latrine	Pour flush latrines	10.6	2.0		
	to piped sewer system				
	to septic tank				
	to pit				
	to unknown place/ not sure/DK				
	to elsewhere				
	Private pour flush latrine				
	to piped sewer system				
	to septic tank				
	to pit				
	to unknown place/ not sure/DK				
	to elsewhere				
	Public/shared pour flush latrine				
	to piped sewer system				
	to septic tank				
	to pit				
	to unknown place/ not sure/DK				
	to elsewhere				
	Dry latrines	68.3	85.2		
	Improved latrines	17.9	6.1		
	Ventilated Improved Pit latrine				
Improved pit latrine	Pit latrine with slab/covered latrine	17.9	6.1		
Traditional pit latrine	Traditional latrine	47.9	74.3		
Open pit	Pit latrine without slab/open pit	1.9	4.8		
	Hanging toilet/hanging latrine				
Bucket	Bucket latrine	0.6	0.0		
	Other				
	Private Latrines				
	Ventilated Improved Pit latrine				
	Pit latrine with slab/covered latrine				
	Traditional latrine				
	Pit latrine without slab/open pit				
	Hanging toilet/hanging latrine				
	Bucket latrine				
	Other				
	Public/shared Latrines				
	Ventilated Improved Pit latrine				
	Pit latrine with slab/covered latrine				
	Traditional latrine				
	Pit latrine without slab/open pit				
	Hanging toilet/hanging latrine				
	Bucket latrine				
	Other				
	Composting toilets				
	Composting toilet (private)				
	Composting toilet (shared)				
	Other improved				
	Other				
	Other				
No facilities/bush/field	No facility, bush, field	1.7	11.9		
	Other unimproved	0.3	0.3		
Other	Other	0.3	0.3		
	Other				
	DK/missing information				
	Total	100.0	100.0		
Calculations					
	improved latrines based on MICS06	43.3	62.1		
Estimations					
	sewerage connections based on MICS06	3.8	0.1		
Access to improved sanitation :		91%	71%		
Access to sewerage connections :		4%	0%		
Used for the estimates :		Yes	Yes		
Used for the estimates :		Yes	Yes		
Ratios	Shared improved facilities/all improved facilities				
	Improved latrine / All latrines	36%	9%		
	Covered dry latrines / All dry latrines	26%	7%		
	VIP / All latrines				
	Traditional latrines / All latrines	61%	85%		
	Improved + traditional latrines / All latrines	97%	94%		
	Sewerage connection among flush/pour flush				
	Sewerage connection among flush				
	Number of people covered by the survey				
	Number of households covered by the survey				
	Total population				
Comments					

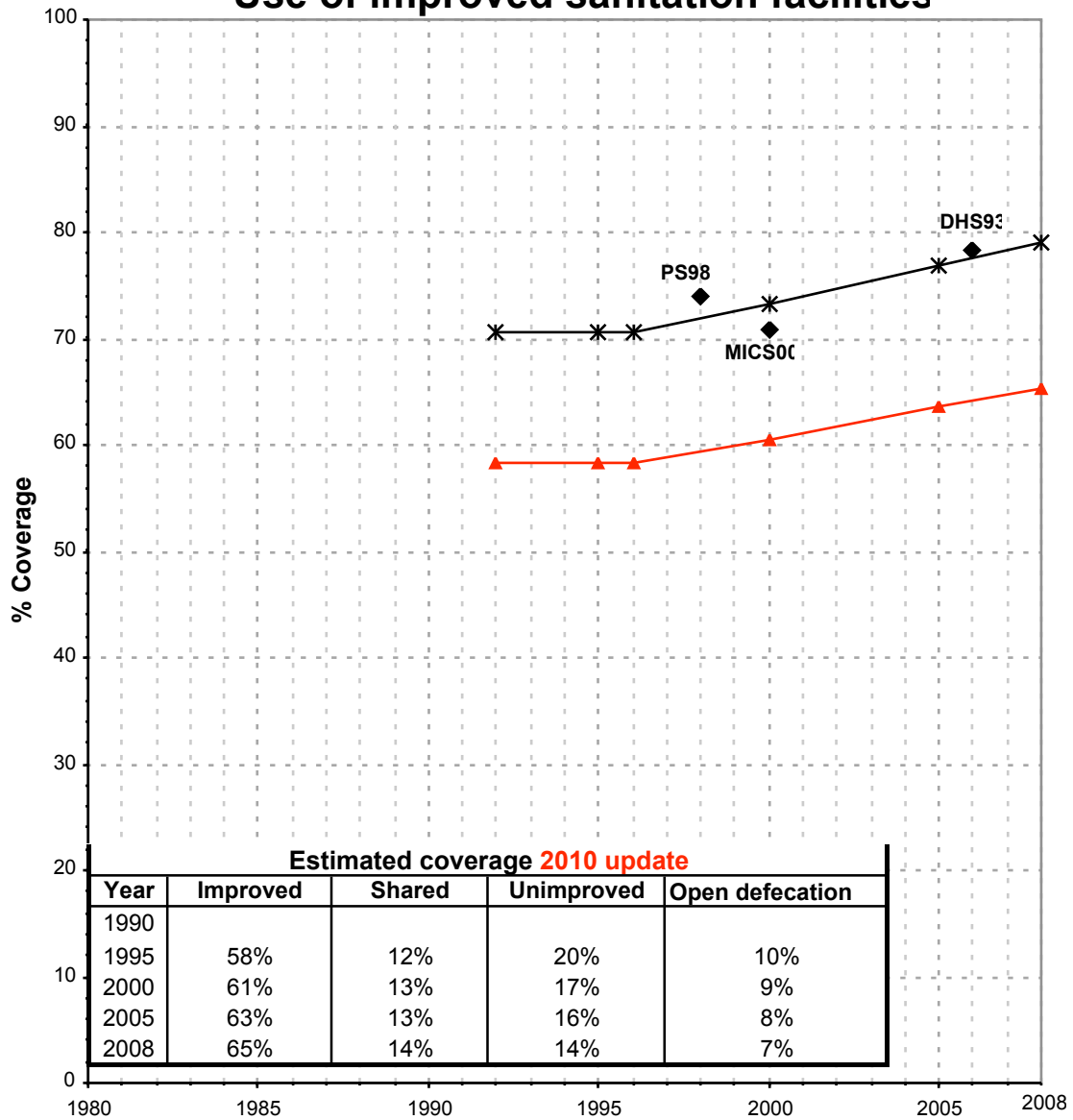
Gambia			SANITATION															
			URBAN								RURAL							
			Sewer connection		Total		Open defecation		Shared		Sewer connection		Total		Open defecation		Shared	
Source	Code	Year	Used	Not used	Used	Not used	Used	Not used	Used	Not used	Used	Not used	Used	Not used	Used	Not used	Used	Not used
Global Water Supply and Sanitation Assessment 2000.	JMP99	1999		33.7		41.1						0.0		34.6				
Multiple Indicator Cluster Survey	MICS00	2000	3.8		90.9		1.7				0.1		70.8		11.9			
Multiple Indicator Cluster Survey	MICS06	2006	7.7		93.4		0.7		45.9		0.6		78.3		6.7		29.6	
Priority survey	PS92	1992																
Priority survey	PS94	1994																
Priority survey	PS98	1998			87.9		1.3		10.3				73.9		6.9		5.3	

Gambia - urban - Use of improved sanitation facilities



Used for the estimates
 * Estimates
 JMP 2010 estimate

Gambia - rural - Use of improved sanitation facilities



Used for the estimates
 * Estimates
 JMP 2010 estimate

Sanitation

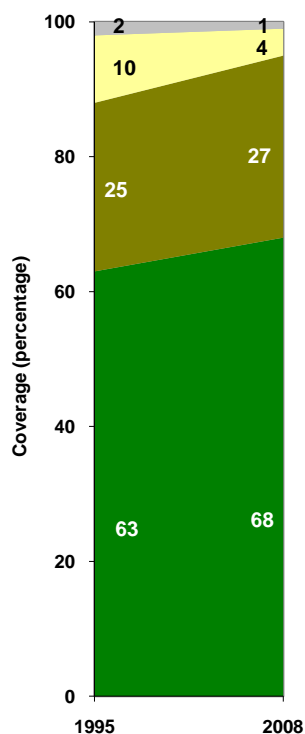
Gambia	Sanitation coverage estimates					
	Urban (%)		Rural (%)		Total (%)	
	1995	2008	1995	2008	1995	2008
Improved facilities	63	68	58	65	60	67
Shared facilities	25	27	12	14	18	21
Unimproved facilities	10	4	20	14	16	8
Open defecation	2	1	10	7	6	4

Source: WHO/UNICEF JMP, 2010

Gambia	Urban		Rural		Total	
	1995	2008	1995	2008	1995	2008
Population (x1000)	476	938	609	722	1,085	1,660

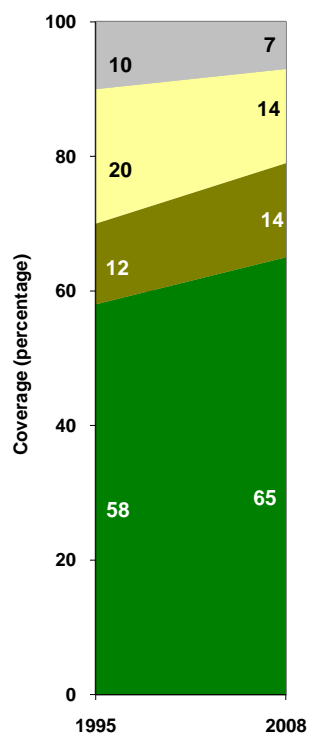
Source: UN / Population Division, 2008

Urban sanitation trends



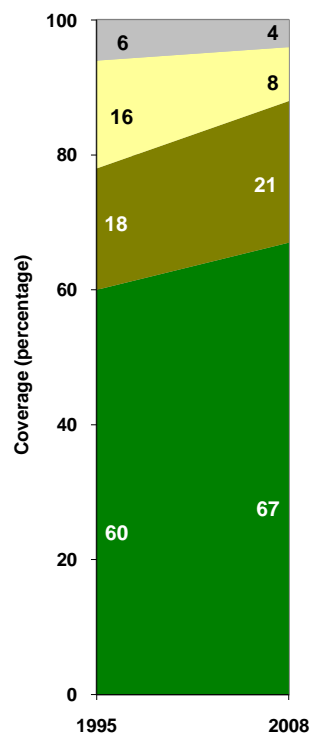
■ Open defecation
■ Unimproved facilities
■ Shared facilities
■ Improved facilities

Rural sanitation trends



■ Open defecation
■ Unimproved facilities
■ Shared facilities
■ Improved facilities

Total sanitation trends



■ Open defecation
■ Unimproved facilities
■ Shared facilities
■ Improved facilities