

WHO / UNICEF

Joint Monitoring Programme
for Water Supply and Sanitation

Estimates for the use of

**Improved Drinking-Water Sources
and Improved Sanitation Facilities**

Updated March 2010

childinfo.org

Use of sanitation facilities		CEN94			Ethiopia			Use of sanitation facilities		CEN96			Ethiopia	
Census					1994			Census					1996	
Original denomination	Classification	Urban	Rural	Total	Original denomination	Classification	Urban	Rural	Total					
	Flush and pour flush	5.0	0.0			Flush and pour flush								
	to piped sewer system					to piped sewer system								
	to septic tank					to septic tank								
	to pit					to pit								
	to unknown place/ not sure/DK					to unknown place/ not sure/DK								
	to elsewhere					to elsewhere								
	Flush/toilets	5.0	0.0			Flush/toilets								
	to piped sewer system					to piped sewer system								
	to septic tank					to septic tank								
	to pit					to pit								
	to unknown place/ not sure/DK					to unknown place/ not sure/DK								
	to elsewhere					to elsewhere								
* Flush toilet private	Private flush/toilet	3.0	0.0			Private flush/toilet								
	to piped sewer system					to piped sewer system								
	to septic tank					to septic tank								
	to pit					to pit								
	to unknown place/ not sure/DK					to unknown place/ not sure/DK								
	to elsewhere					to elsewhere								
* Flush toilet shared	Public/shared flush/toilet	2.0	0.0			Public/shared flush/toilet								
	to piped sewer system					to piped sewer system								
	to septic tank					to septic tank								
	to pit					to pit								
	to unknown place/ not sure/DK					to unknown place/ not sure/DK								
	to elsewhere					to elsewhere								
	Latrines	51.0	6.0			Latrines								
	Pour flush latrines					Pour flush latrines								
	to piped sewer system					to piped sewer system								
	to septic tank					to septic tank								
	to pit					to pit								
	to unknown place/ not sure/DK					to unknown place/ not sure/DK								
	to elsewhere					to elsewhere								
	Private pour flush latrine					Private pour flush latrine								
	to piped sewer system					to piped sewer system								
	to septic tank					to septic tank								
	to pit					to pit								
	to unknown place/ not sure/DK					to unknown place/ not sure/DK								
	to elsewhere					to elsewhere								
	Public/shared pour flush latrine					Public/shared pour flush latrine								
	to piped sewer system					to piped sewer system								
	to septic tank					to septic tank								
	to pit					to pit								
	to unknown place/ not sure/DK					to unknown place/ not sure/DK								
	to elsewhere					to elsewhere								
	Dry latrines	51.0	6.0			Dry latrines								
	Improved latrines					Improved latrines								
	Ventilated Improved Pit latrine					Ventilated Improved Pit latrine								
	Pit latrine with slab/covered latrine					Pit latrine with slab/covered latrine								
Has Toilet	Traditional latrine	51.0	6.0			Traditional latrine								
	Pit latrine without slab/open pit					Pit latrine without slab/open pit								
	Hanging toilet/hanging latrine					Hanging toilet/hanging latrine								
	Bucket latrine					Bucket latrine								
	Other					Other								
	Private Latrines	24.0				Private Latrines								
	Ventilated Improved Pit latrine					Ventilated Improved Pit latrine								
	Pit latrine with slab/covered latrine					Pit latrine with slab/covered latrine								
* Pit private	Traditional latrine	24.0				Traditional latrine								
	Pit latrine without slab/open pit					Pit latrine without slab/open pit								
	Hanging toilet/hanging latrine					Hanging toilet/hanging latrine								
	Bucket latrine					Bucket latrine								
	Other					Other								
	Public/shared Latrines	27.0				Public/shared Latrines								
	Ventilated Improved Pit latrine					Ventilated Improved Pit latrine								
	Pit latrine with slab/covered latrine					Pit latrine with slab/covered latrine								
* Pit shared	Traditional latrine	27.0				Traditional latrine								
	Pit latrine without slab/open pit					Pit latrine without slab/open pit								
	Hanging toilet/hanging latrine					Hanging toilet/hanging latrine								
	Bucket latrine					Bucket latrine								
	Other					Other								
	Composting toilets					Composting toilets								
	Composting toilet (private)					Composting toilet (private)								
	Composting toilet (shared)					Composting toilet (shared)								
	Other improved					Other improved								
	Other					Other								
Has No Toilet	No facility, bush, field	43.0	94.0			No facility, bush, field								
	Other unimproved					Other unimproved								
	Other					Other								
	Other					Other								
Not Stated	DK/missing information	1.0				DK/missing information								
	Total	100.0	100.0			Total								
Calculations						Calculations								
	Improved latrines based on ratio WHS03	39.7	2.8											
Estimations						Estimations								
	SC, based on WHS03	1.1	0.0											
Access to improved sanitation :		45%	3%		Access to improved sanitation :									
Access to sewerage connections :		1%	0%		Access to sewerage connections :									
Used for the estimates		Yes	Yes		Used for the estimates		No	No						
Used for the estimates		Yes	Yes		Used for the estimates		No	No						
Ratios	Shared improved facilities/all improved facilities				Ratios	Shared improved facilities/all improved facilities								
	Improved latrine / All latrines					Improved latrine / All latrines								
	Covered dry latrines / All dry latrines					Covered dry latrines / All dry latrines								
	VIP / All latrines					VIP / All latrines								
	Traditional latrines / All latrines	100%	100%			Traditional latrines / All latrines								
	Improved + traditional latrines / All latrines					Improved + traditional latrines / All latrines								
Sewerage connection among flush/pour flush					Sewerage connection among flush/pour flush									
Sewerage connection among flush					Sewerage connection among flush									
Number of people covered by the survey:					Number of people covered by the survey:									
Number of households covered by the survey:					Number of households covered by the survey:									
Total population:					Total population:									
Comments					Comments	Not used as there is no record of a census in 1996. Date were reported by								

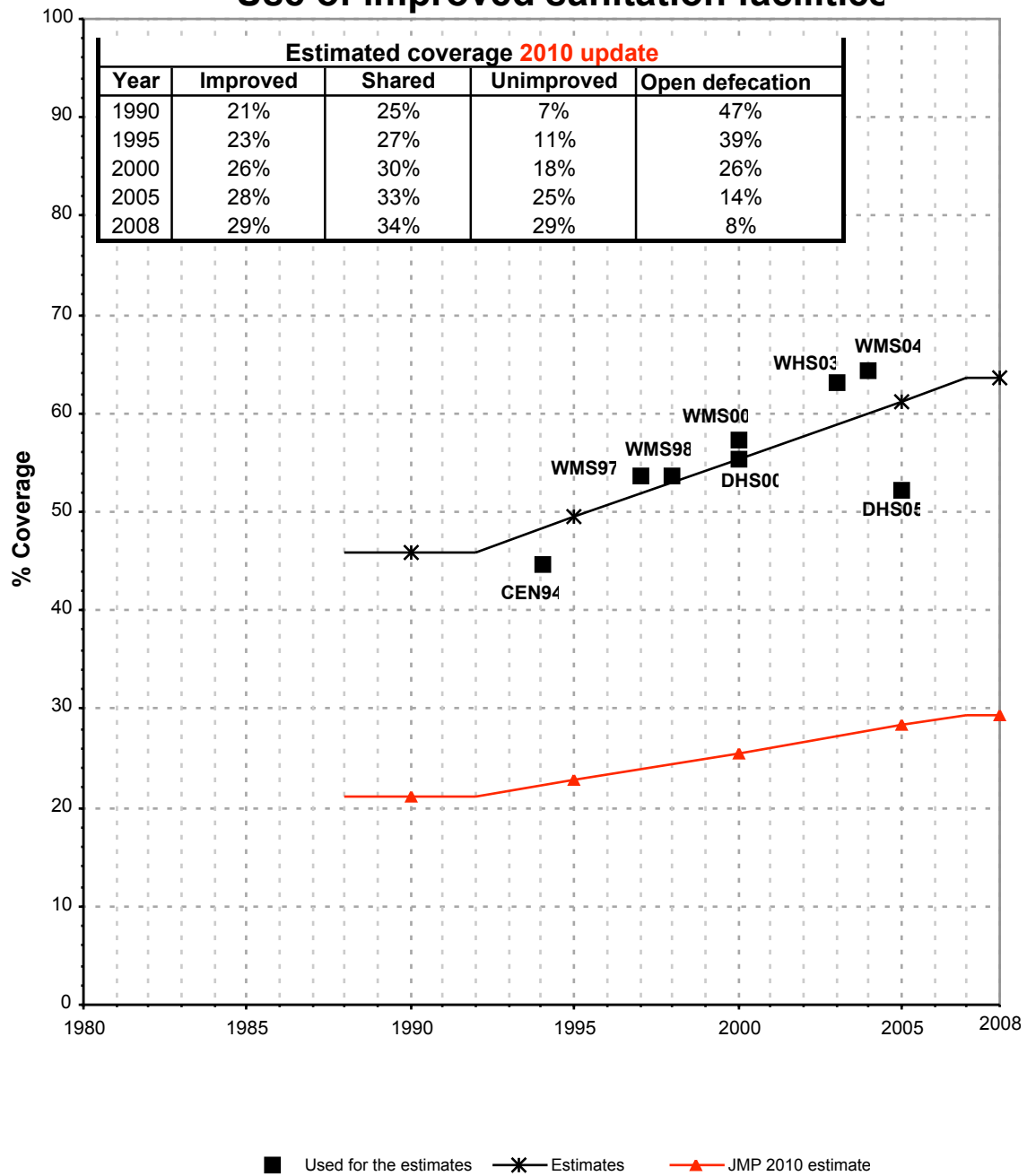
Use of sanitation facilities		POV99			Ethiopia			Use of sanitation facilities		JMP99			Ethiopia						
Poverty situation in Ethiopia					Global Water Supply and Sanitation Assessment 2000.														
Ministry of Economic Development and Cooperation					1999					Water Supply and Sanitation Sector Questionnaire - 1999. Form 6 sent to WHO.					1999				
Original denomination	Classification	Urban	Rural	Total	Original denomination	Classification	Urban	Rural	Total	Original denomination	Classification	Urban	Rural	Total					
	Flush and pour flush	2.3	0.5	0.9		Flush and pour flush	5.6	0.0			Flush and pour flush	5.6	0.0						
	to piped sewer system				Population served with household connections to conventional	to piped sewer system	5.6	0.0			to piped sewer system								
	to septic tank					to septic tank					to septic tank								
	to pit					to pit					to pit								
	to unknown place/ not sure/DK					to unknown place/ not sure/DK					to unknown place/ not sure/DK								
	to elsewhere					to elsewhere					to elsewhere								
Flush toilet	Flush/toilets	2.3	0.5	0.9		Flush/toilets					Flush/toilets								
	to piped sewer system					to piped sewer system					to piped sewer system								
	to septic tank					to septic tank					to septic tank								
	to pit					to pit					to pit								
	to unknown place/ not sure/DK					to unknown place/ not sure/DK					to unknown place/ not sure/DK								
	to elsewhere					to elsewhere					to elsewhere								
	Private flush/toilet					Private flush/toilet					Private flush/toilet								
	to piped sewer system					to piped sewer system					to piped sewer system								
	to septic tank					to septic tank					to septic tank								
	to pit					to pit					to pit								
	to unknown place/ not sure/DK					to unknown place/ not sure/DK					to unknown place/ not sure/DK								
	to elsewhere					to elsewhere					to elsewhere								
	Public/shared flush/toilet					Public/shared flush/toilet					Public/shared flush/toilet								
	to piped sewer system					to piped sewer system					to piped sewer system								
	to septic tank					to septic tank					to septic tank								
	to pit					to pit					to pit								
	to unknown place/ not sure/DK					to unknown place/ not sure/DK					to unknown place/ not sure/DK								
	to elsewhere					to elsewhere					to elsewhere								
	Latrines	56.6	3.6	12.7		Latrines					Latrines								
	Pour flush latrines					Pour flush latrines					Pour flush latrines								
	to piped sewer system					to piped sewer system					to piped sewer system								
	to septic tank					to septic tank					to septic tank								
	to pit					to pit					to pit								
	to unknown place/ not sure/DK					to unknown place/ not sure/DK					to unknown place/ not sure/DK								
	to elsewhere					to elsewhere					to elsewhere								
	Private pour flush latrine					Private pour flush latrine					Private pour flush latrine								
	to piped sewer system					to piped sewer system					to piped sewer system								
	to septic tank					to septic tank					to septic tank								
	to pit					to pit					to pit								
	to unknown place/ not sure/DK					to unknown place/ not sure/DK					to unknown place/ not sure/DK								
	to elsewhere					to elsewhere					to elsewhere								
	Public/shared pour flush latrine					Public/shared pour flush latrine					Public/shared pour flush latrine								
	to piped sewer system					to piped sewer system					to piped sewer system								
	to septic tank					to septic tank					to septic tank								
	to pit					to pit					to pit								
	to unknown place/ not sure/DK					to unknown place/ not sure/DK					to unknown place/ not sure/DK								
	to elsewhere					to elsewhere					to elsewhere								
	Dry latrines	56.6	3.6	12.7		Dry latrines					Dry latrines								
	Improved latrines					Improved latrines					Improved latrines								
	Ventilated Improved Pit latrine					Ventilated Improved Pit latrine					Ventilated Improved Pit latrine								
	Pit latrine with slab/covered latrine					Pit latrine with slab/covered latrine					Pit latrine with slab/covered latrine								
	Traditional latrine					Traditional latrine					Traditional latrine								
	Pit latrine without slab/open pit					Pit latrine without slab/open pit					Pit latrine without slab/open pit								
	Hanging toilet/hanging latrine					Hanging toilet/hanging latrine					Hanging toilet/hanging latrine								
	Bucket latrine					Bucket latrine					Bucket latrine								
	Other					Other					Other								
	Private Latrines					Private Latrines					Private Latrines								
	Ventilated Improved Pit latrine					Ventilated Improved Pit latrine					Ventilated Improved Pit latrine								
	Pit latrine with slab/covered latrine					Pit latrine with slab/covered latrine					Pit latrine with slab/covered latrine								
	Traditional latrine					Traditional latrine					Traditional latrine								
	Pit latrine without slab/open pit					Pit latrine without slab/open pit					Pit latrine without slab/open pit								
	Hanging toilet/hanging latrine					Hanging toilet/hanging latrine					Hanging toilet/hanging latrine								
	Bucket latrine					Bucket latrine					Bucket latrine								
	Other					Other					Other								
	Public/shared Latrines					Public/shared Latrines					Public/shared Latrines								
	Ventilated Improved Pit latrine					Ventilated Improved Pit latrine					Ventilated Improved Pit latrine								
	Pit latrine with slab/covered latrine					Pit latrine with slab/covered latrine					Pit latrine with slab/covered latrine								
	Traditional latrine					Traditional latrine					Traditional latrine								
	Pit latrine without slab/open pit					Pit latrine without slab/open pit					Pit latrine without slab/open pit								
	Hanging toilet/hanging latrine					Hanging toilet/hanging latrine					Hanging toilet/hanging latrine								
	Bucket latrine					Bucket latrine					Bucket latrine								
	Other					Other					Other								
	Composting toilets					Composting toilets					Composting toilets								
	Composting toilet (private)					Composting toilet (private)					Composting toilet (private)								
	Composting toilet (shared)					Composting toilet (shared)					Composting toilet (shared)								
	Other improved				Population without household connections but served	Other improved	51.6	5.9			Other improved								
	Other					Other					Other								
	Other					Other					Other								
Field Forest	No facility, bush, field	40.9	95.8	84.0		No facility, bush, field					No facility, bush, field								
	Other unimproved	0.2	0.1	2.4	Total population unserved	Other unimproved	42.8	94.1			Other unimproved								
	Other	0.2	0.1	2.4		Other					Other								
	Other					Other					Other								
	DK/missing information					DK/missing information					DK/missing information								
	Total	100.0	100.0	100.0		Total	94.4	100.0			Total	94.4	100.0						
Calculations						Calculations					Calculations								
	Improved latrines based on ratio WHS03	43.9	1.7																
Estimations						Estimations					Estimations								
	SC, based on WHS03	0.5	0.2																
Access to improved sanitation :		46%	2%		Access to improved plus shared sanitation:		57%	6%		Access to improved plus shared sanitation:		57%	6%						
Access to sewerage connections :		1%	0%		Access to sewerage connections :		6%	0%		Access to sewerage connections :		6%	0%						
Used for the estimates		No	No		Used for the estimates		No	No		Used for the estimates		No	No						
Used for the estimates		No	No		Used for the estimates		No	No		Used for the estimates		No	No						
Ratios	Shared improved facilities/all improved facilities				Ratios	Shared improved facilities/all improved facilities				Ratios	Shared improved facilities/all improved facilities								
	Improved latrine / All latrines					Improved latrine / All latrines					Improved latrine / All latrines								
	Covered dry latrines / All dry latrines					Covered dry latrines / All dry latrines					Covered dry latrines / All dry latrines								
	VIP / All latrines					VIP / All latrines					VIP / All latrines								
	Traditional latrines / All latrines	100%	97%	99%		Traditional latrines / All latrines					Traditional latrines / All latrines								
	Improved + traditional latrines / All latrines					Improved + traditional latrines / All latrines					Improved + traditional latrines / All latrines								
Sewerage connection among flush/pour flush					Sewerage connection among flush/pour flush					Sewerage connection among flush/pour flush									
Sewerage connection among flush					Sewerage connection among flush					Sewerage connection among flush									
Number of people covered by the survey:					Number of people covered by the survey:					Number of people covered by the survey:									
Number of households covered by the survey:					Number of households covered by the survey:					Number of households covered by the survey:									
Total population:					Total population:		7036	44342		Total population:		7036	44342						
Comments					Comments					Comments									

Use of sanitation facilities		DHS00			Ethiopia			Use of sanitation facilities		WMS00			Ethiopia		
Demographic and Household Survey					2000			Welfare Monitoring Survey					2000		
Central Statistical Authority, Addis Ababa								Central Statistical Authority, Addis Ababa							
Original denomination	Classification	Urban	Rural	Total	Original denomination	Classification	Urban	Rural	Total						
	Flush and pour flush	1.9	0.0	0.3		Flush and pour flush	7.0	0.8	1.7						
	to piped sewer system					to piped sewer system									
	to septic tank					to septic tank									
	to pit					to pit									
	to unknown place/ not sure/DK					to unknown place/ not sure/DK									
	to elsewhere					to elsewhere									
	Flush/toilets	1.9	0.0	0.3	Flush toilet	Flush/toilets	7.0	0.8	1.7						
	to piped sewer system					to piped sewer system									
	to septic tank					to septic tank									
	to pit					to pit									
	to unknown place/ not sure/DK					to unknown place/ not sure/DK									
	to elsewhere					to elsewhere									
Own flush toilet	Private flush/toilet	1.9	0.0	0.3		Private flush/toilet									
	to piped sewer system					to piped sewer system									
	to septic tank					to septic tank									
	to pit					to pit									
	to unknown place/ not sure/DK					to unknown place/ not sure/DK									
	to elsewhere					to elsewhere									
	Public/shared flush/toilet					Public/shared flush/toilet									
	to piped sewer system					to piped sewer system									
	to septic tank					to septic tank									
	to pit					to pit									
	to unknown place/ not sure/DK					to unknown place/ not sure/DK									
	to elsewhere					to elsewhere									
	Latrines	68.2	7.9	17.7		Latrines	65.3	8.1	16.4						
	Pour flush latrines					Pour flush latrines									
	to piped sewer system					to piped sewer system									
	to septic tank					to septic tank									
	to pit					to pit									
	to unknown place/ not sure/DK					to unknown place/ not sure/DK									
	to elsewhere					to elsewhere									
	Private pour flush latrine					Private pour flush latrine									
	to piped sewer system					to piped sewer system									
	to septic tank					to septic tank									
	to pit					to pit									
	to unknown place/ not sure/DK					to unknown place/ not sure/DK									
	to elsewhere					to elsewhere									
	Public/shared pour flush latrine					Public/shared pour flush latrine									
	to piped sewer system					to piped sewer system									
	to septic tank					to septic tank									
	to pit					to pit									
	to unknown place/ not sure/DK					to unknown place/ not sure/DK									
	to elsewhere					to elsewhere									
	Dry latrines	68.2	7.9	17.7		Dry latrines	65.3	8.1	16.4						
	Improved latrines	1.9	0.0	0.3		Improved latrines									
Vent. Improved pit latrine*	Ventilated Improved Pit latrine	1.9	0.0	0.3		Ventilated Improved Pit latrine									
	Pit latrine with slab/covered latrine					Pit latrine with slab/covered latrine									
Traditional pit toilet*	Traditional latrine	66.3	7.9	17.4	Pit latrine	Traditional latrine	64.6	8.1	16.3						
	Pit latrine without slab/open pit					Pit latrine without slab/open pit									
	Hanging toilet/hanging latrine					Hanging toilet/hanging latrine									
	Bucket latrine					Bucket latrine									
	Other				Container from household items	Other	0.7	0.0	0.1						
	Private Latrines					Private Latrines									
	Ventilated Improved Pit latrine					Ventilated Improved Pit latrine									
	Pit latrine with slab/covered latrine					Pit latrine with slab/covered latrine									
	Traditional latrine					Traditional latrine									
	Pit latrine without slab/open pit					Pit latrine without slab/open pit									
	Hanging toilet/hanging latrine					Hanging toilet/hanging latrine									
	Bucket latrine					Bucket latrine									
	Other					Other									
	Public/shared Latrines					Public/shared Latrines									
	Ventilated Improved Pit latrine					Ventilated Improved Pit latrine									
	Pit latrine with slab/covered latrine					Pit latrine with slab/covered latrine									
	Traditional latrine					Traditional latrine									
	Pit latrine without slab/open pit					Pit latrine without slab/open pit									
	Hanging toilet/hanging latrine					Hanging toilet/hanging latrine									
	Bucket latrine					Bucket latrine									
	Other					Other									
	Composting toilets					Composting toilets									
	Composting toilet (private)					Composting toilet (private)									
	Composting toilet (shared)					Composting toilet (shared)									
	Other improved					Other improved									
	Other					Other									
No facility/ bush	No facility, bush, field	29.9	92.0	81.9	Field/ forest	No facility, bush, field	26.9	90.7	81.5						
	Other unimproved				Others	Other unimproved	0.8	0.4	0.5						
	Other					Other	0.8	0.4	0.5						
	Other					Other									
	DK/missing information					DK/missing information									
	Total	100.0	99.9	99.9		Total	100.0	100.0	100.1						
Calculations						Calculations									
	Improved latrines based on ratio WHS03	51.6	3.7			Improved latrines based on ratio WHS03	50.2	3.8							
Estimations						Estimations									
	SC, based on WHS03	0.4	0.0			SC, based on WHS03	1.6	0.4							
Access to improved sanitation :		55%	4%		Access to improved sanitation :		57%	5%							
Access to sewerage connections :		0%	0%		Access to sewerage connections :		2%	0%							
Used for the estimates		Yes	Yes		Used for the estimates		Yes	Yes							
Used for the estimates		Yes	Yes		Used for the estimates		Yes	Yes							
Ratios	Shared improved facilities/all improved facilities	51.1%	26.8%		Ratios	Shared improved facilities/all improved facilities									
	Improved latrine / All latrines	3%	0%	2%		Improved latrine / All latrines									
	Covered dry latrines / All dry latrines					Covered dry latrines / All dry latrines									
	VIP / All latrines	3%	0%			VIP / All latrines									
	Traditional latrines / All latrines	97%	100%	98%		Traditional latrines / All latrines	99%	100%	99%						
	Improved + traditional latrines / All latrines	100%	100%	100%		Improved + traditional latrines / All latrines									
Sewerage connection among flush/pour flush					Sewerage connection among flush/pour flush										
Sewerage connection among flush					Sewerage connection among flush										
Number of people covered by the survey:					Number of people covered by the survey:										
Number of households covered by the survey:					Number of households covered by the survey:										
Total population:					Total population:										
Comments					Comments										

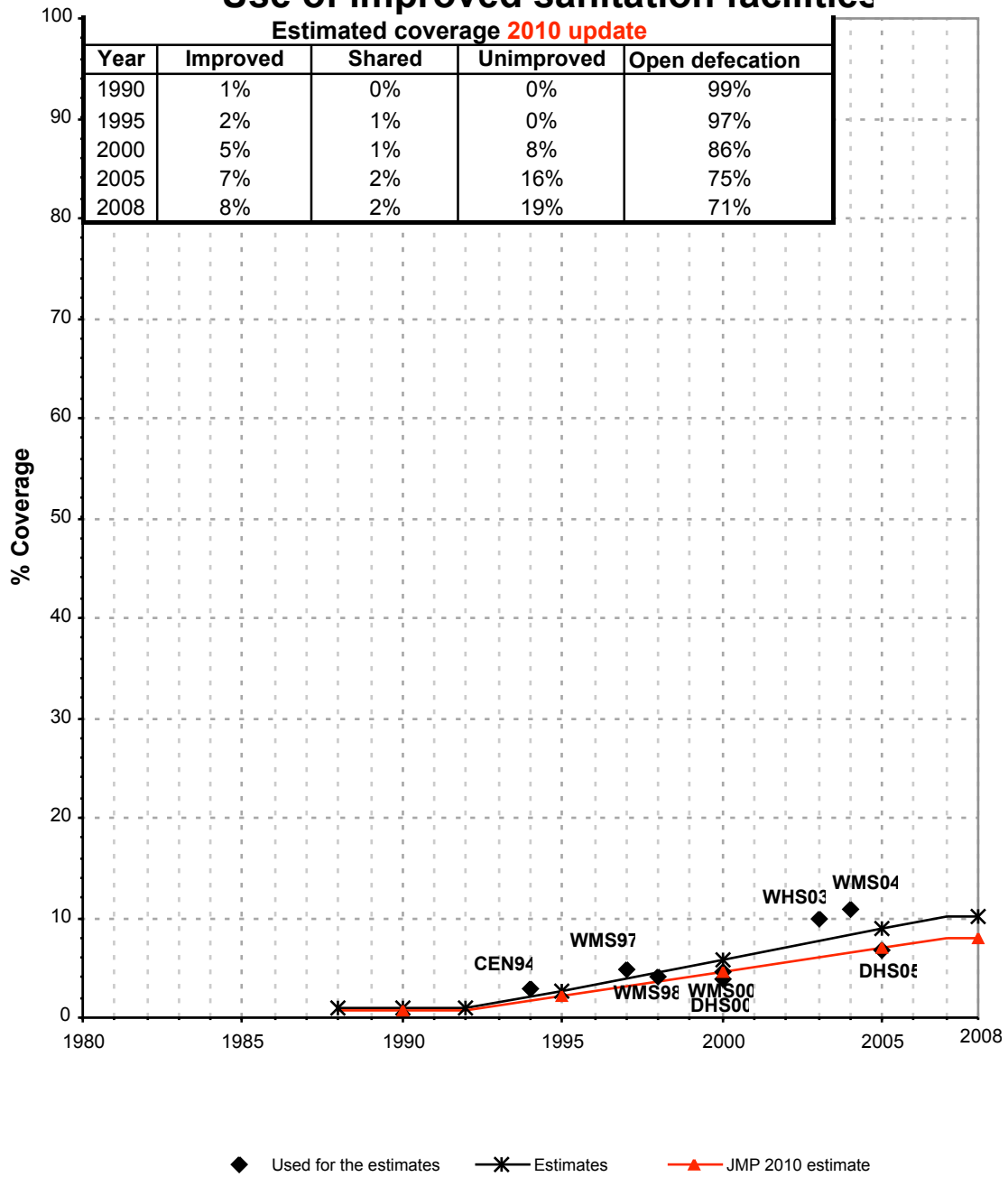
Use of sanitation facilities		WHS03			Ethiopia			Use of sanitation facilities		WMS04			Ethiopia		
World Health Survey					Welfare Monitoring Survey					Central Statistical Authority, Addis Ababa					
					2003								2004		
Original denomination	Classification				Urban	Rural	Total	Original denomination	Classification				Urban	Rural	Total
	Flush and pour flush				15.2	1.1			Flush and pour flush				8.8	1.3	2.5
		to piped sewer system			3.4	0.5				to piped sewer system					
		to septic tank			5.0	0.3				to septic tank					
		to pit								to pit					
		to unknown place/ not sure/DK								to unknown place/ not sure/DK					
		to elsewhere								to elsewhere					
	Flush/toilets				8.5	0.8		Flush toilet	Flush/toilets				8.8	1.3	2.5
		to piped sewer system			3.4	0.5				to piped sewer system					
		to septic tank			5.0	0.3				to septic tank					
		to pit								to pit					
		to unknown place/ not sure/DK								to unknown place/ not sure/DK					
		to elsewhere								to elsewhere					
	Private flush/toilet				6.3	0.6			Private flush/toilet						
Private domestic connection to sewage system		to piped sewer system			2.0	0.3				to piped sewer system					
Private flush to septic tank		to septic tank			4.3	0.3				to septic tank					
		to pit								to pit					
		to unknown place/ not sure/DK								to unknown place/ not sure/DK					
		to elsewhere								to elsewhere					
	Public/shared flush/toilet				2.1	0.2			Public/shared flush/toilet						
Shared domestic connection to sewage system		to piped sewer system			1.4	0.1				to piped sewer system					
Shared flush to septic tank		to septic tank			0.7	0.0				to septic tank					
		to pit								to pit					
		to unknown place/ not sure/DK								to unknown place/ not sure/DK					
		to elsewhere								to elsewhere					
	Latrines				70.8	19.3			Latrines				71.7	20.2	28.4
	Pour flush latrines				6.7	0.2			Pour flush latrines						
		to piped sewer system								to piped sewer system					
		to septic tank								to septic tank					
		to pit								to pit					
		to unknown place/ not sure/DK								to unknown place/ not sure/DK					
		to elsewhere								to elsewhere					
Private pour flush latrine		Private pour flush latrine			4.5	0.2				Private pour flush latrine					
		to piped sewer system								to piped sewer system					
		to septic tank								to septic tank					
		to pit								to pit					
		to unknown place/ not sure/DK								to unknown place/ not sure/DK					
		to elsewhere								to elsewhere					
Shared pour flush latrine		Public/shared pour flush latrine			2.2	0.1				Public/shared pour flush latrine					
		to piped sewer system								to piped sewer system					
		to septic tank								to septic tank					
		to pit								to pit					
		to unknown place/ not sure/DK								to unknown place/ not sure/DK					
		to elsewhere								to elsewhere					
	Dry latrines				64.1	19.0			Dry latrines				71.7	20.2	28.4
	Improved latrines				48.0	8.8			Improved latrines						
		Ventilated Improved Pit latrine								Ventilated Improved Pit latrine					
		Pit latrine with slab/covered latrine			48.0	8.8				Pit latrine with slab/covered latrine					
		Traditional latrine						Pit latrine		Traditional latrine			71.4	20.0	28.1
Uncovered dry latrine (without privacy)		Pit latrine without slab/open pit			15.6	10.1				Pit latrine without slab/open pit					
		Hanging toilet/hanging latrine								Hanging toilet/hanging latrine					
Bucket latrine (where fresh excreta are manually removed)		Bucket latrine			0.5	0.1				Bucket latrine					
		Other						Container from household items		Other			0.3	0.2	0.2
	Private Latrines				28.9	7.5			Private Latrines						
Private covered dry latrine (with privacy)		Ventilated Improved Pit latrine								Ventilated Improved Pit latrine					
		Pit latrine with slab/covered latrine			28.9	7.5				Pit latrine with slab/covered latrine					
		Traditional latrine								Traditional latrine					
		Pit latrine without slab/open pit								Pit latrine without slab/open pit					
		Hanging toilet/hanging latrine								Hanging toilet/hanging latrine					
		Bucket latrine								Bucket latrine					
		Other								Other					
	Public/shared Latrines				19.1	1.3			Public/shared Latrines						
Shared covered dry latrine (with privacy)		Ventilated Improved Pit latrine								Ventilated Improved Pit latrine					
		Pit latrine with slab/covered latrine			19.1	1.3				Pit latrine with slab/covered latrine					
		Traditional latrine								Traditional latrine					
		Pit latrine without slab/open pit								Pit latrine without slab/open pit					
		Hanging toilet/hanging latrine								Hanging toilet/hanging latrine					
		Bucket latrine								Bucket latrine					
		Other								Other					
	Composting toilets								Composting toilets						
		Composting toilet (private)								Composting toilet (private)					
		Composting toilet (shared)								Composting toilet (shared)					
	Other improved								Other improved						
		Other								Other					
		Other								Other					
No facilities (open defecation)		No facility, bush, field			17.2	79.3		Field/ forest		No facility, bush, field			19.2	78.2	68.9
		Other unimproved			3.5	0.6				Other unimproved			0.3	0.2	0.2
Other		Other			3.5	0.6		Others		Other			0.3	0.2	0.2
		Other								Other					
	DK/missing information								DK/missing information						
	Total				100.0	100.0			Total				100.0	100.0	99.9
Calculations								Calculations							
Estimations								Estimations							
									Improved latrines based on ratio WHS03				55.5	9.5	
									SC, based on WHS03				2.0	0.6	
Access to improved sanitation :				63%	10%		Access to improved sanitation :				64%	11%			
Access to sewerage connections :				3%	0%		Access to sewerage connections :				2%	1%			
Used for the estimates				Yes	Yes		Used for the estimates				Yes	Yes			
Used for the estimates				Yes	Yes		Used for the estimates				Yes	Yes			
Ratios	Shared improved facilities/all improved facilities			78%	47%		Shared improved facilities/all improved facilities								
	Improved latrine / All latrines			75%	47%		Improved latrine / All latrines								
	Covered dry latrines / All dry latrines						Covered dry latrines / All dry latrines								
	VIP / All latrines						VIP / All latrines								
	Traditional latrines / All latrines						Traditional latrines / All latrines			100%	99%	99%			
	Improved + traditional latrines / All latrines						Improved + traditional latrines / All latrines								
Sewerage connection among flush/pour flush			22.6	45.7		Sewerage connection among flush/pour flush									
Sewerage connection among flush			40.5	59.3		Sewerage connection among flush									
Number of people covered by the survey:							Number of people covered by the survey:								
Number of households covered by the survey:							Number of households covered by the survey:								
Total population:							Total population:								
Comments							Comments								

Ethiopia			SANITATION															
			URBAN								RURAL							
			Sewer connection		Total		Open defecation		Shared		Sewer connection		Total		Open defecation		Shared	
Source	Code	Year	Used	Not used	Used	Not used	Used	Not used	Used	Not used	Used	Not used	Used	Not used	Used	Not used	Used	Not used
Census	CEN94	1994	1.1		44.7		43.0				0.0		2.8		94.0			
Census	CEN96	1996																
Data Compilation and Analysis Project	DCAP96	1996				53.7		31.1					4.7		91.5			
Welfare Monitoring Survey	WMS98	1998	1.0		53.6		30.6				0.4		4.0		92.0			
Poverty situation in Ethiopia	POV99	1999		0.5		46.2		40.9				0.2		2.2		95.8		
Global Water Supply and Sanitation Assessment 2000.	JMP99	1999		5.6		57.2						0.0		5.9				
Demographic and Household Survey	DHS00	2000	0.4		55.4		29.9		51.1		0.0		3.7		92.0		26.8	
Welfare Monitoring Survey	WMS00	2000	1.6		57.2		26.9				0.4		4.6		90.7			
World Health Survey	WHS03	2003	3.4		63.1		17.2				0.5		9.9		79.3			
Welfare Monitoring Survey	WMS04	2004	2.0		64.3		19.2				0.6		10.8		78.2			
Demographic and Household Survey	DHS05	2005	1.4		52.3		11.3		56.5		0.0		6.7		69.2		17.4	
WELFARE MONITORING SURVEY MUDULE, 1997 (YEAR 1)	WMS97	1997			53.7		31.1						4.7		91.5			

Ethiopia - urban - Use of improved sanitation facilities



Ethiopia - rural - Use of improved sanitation facilities



Sanitation

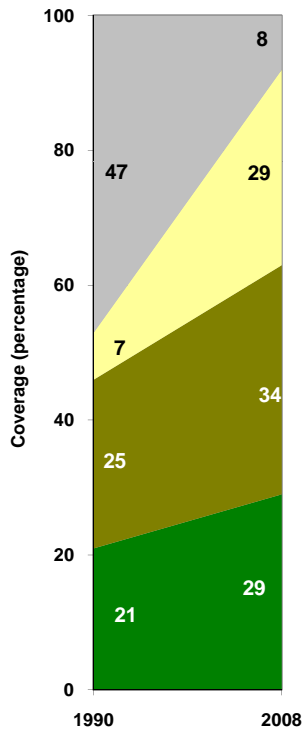
Ethiopia	Sanitation coverage estimates					
	Urban (%)		Rural (%)		Total (%)	
	1990	2008	1990	2008	1990	2008
Improved facilities	21	29	1	8	4	12
Shared facilities	25	34	0	2	3	7
Unimproved facilities	7	29	0	19	1	21
Open defecation	47	8	99	71	92	60

Source: WHO/UNICEF JMP, 2010

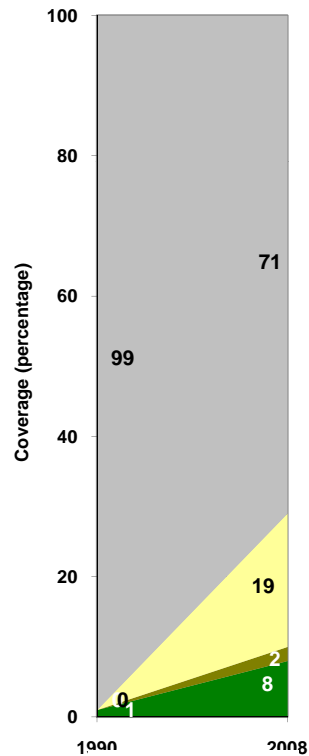
Ethiopia	Urban		Rural		Total	
	1990	2008	1990	2008	1990	2008
Population (x1000)	6,095	13,657	42,197	67,057	48,292	80,713

Source: UN / Population Division, 2008

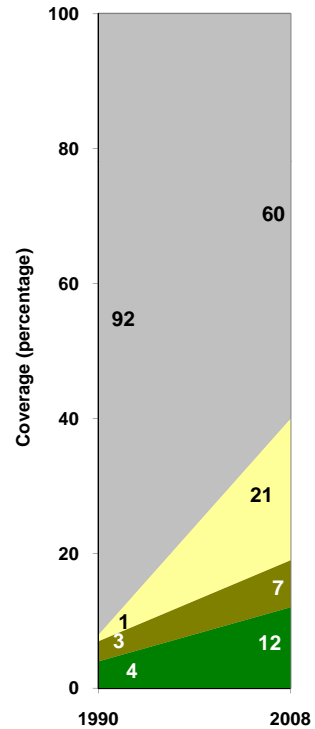
Urban sanitation trends



Rural sanitation trends



Total sanitation trends



■ Open defecation
■ Unimproved facilities
■ Shared facilities
■ Improved facilities

■ Open defecation
■ Unimproved facilities
■ Shared facilities
■ Improved facilities

■ Open defecation
■ Unimproved facilities
■ Shared facilities
■ Improved facilities