

WHO / UNICEF

Joint Monitoring Programme
for Water Supply and Sanitation

Estimates for the use of

**Improved Drinking-Water Sources
and Improved Sanitation Facilities**

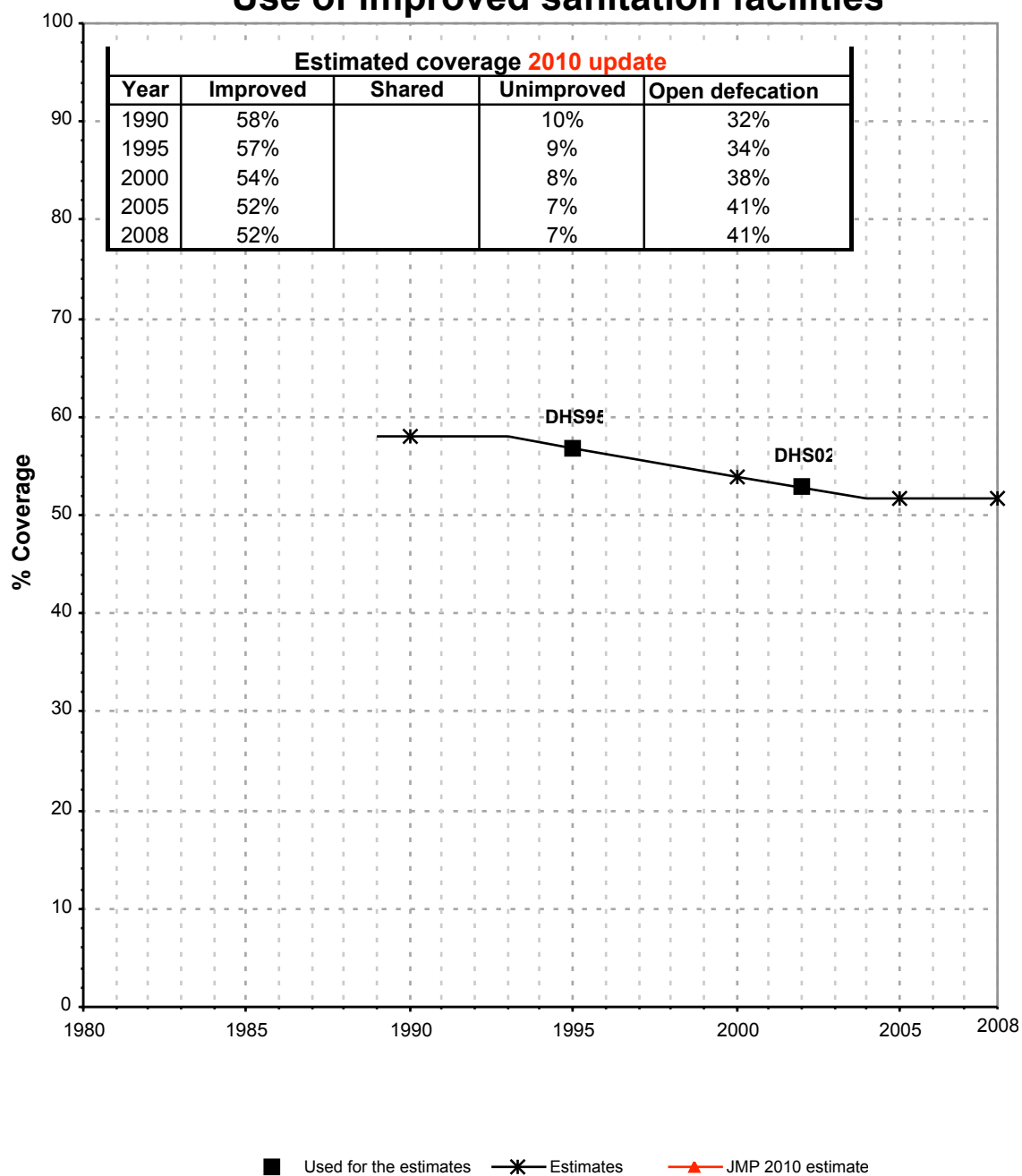
Updated March 2010

childinfo.org

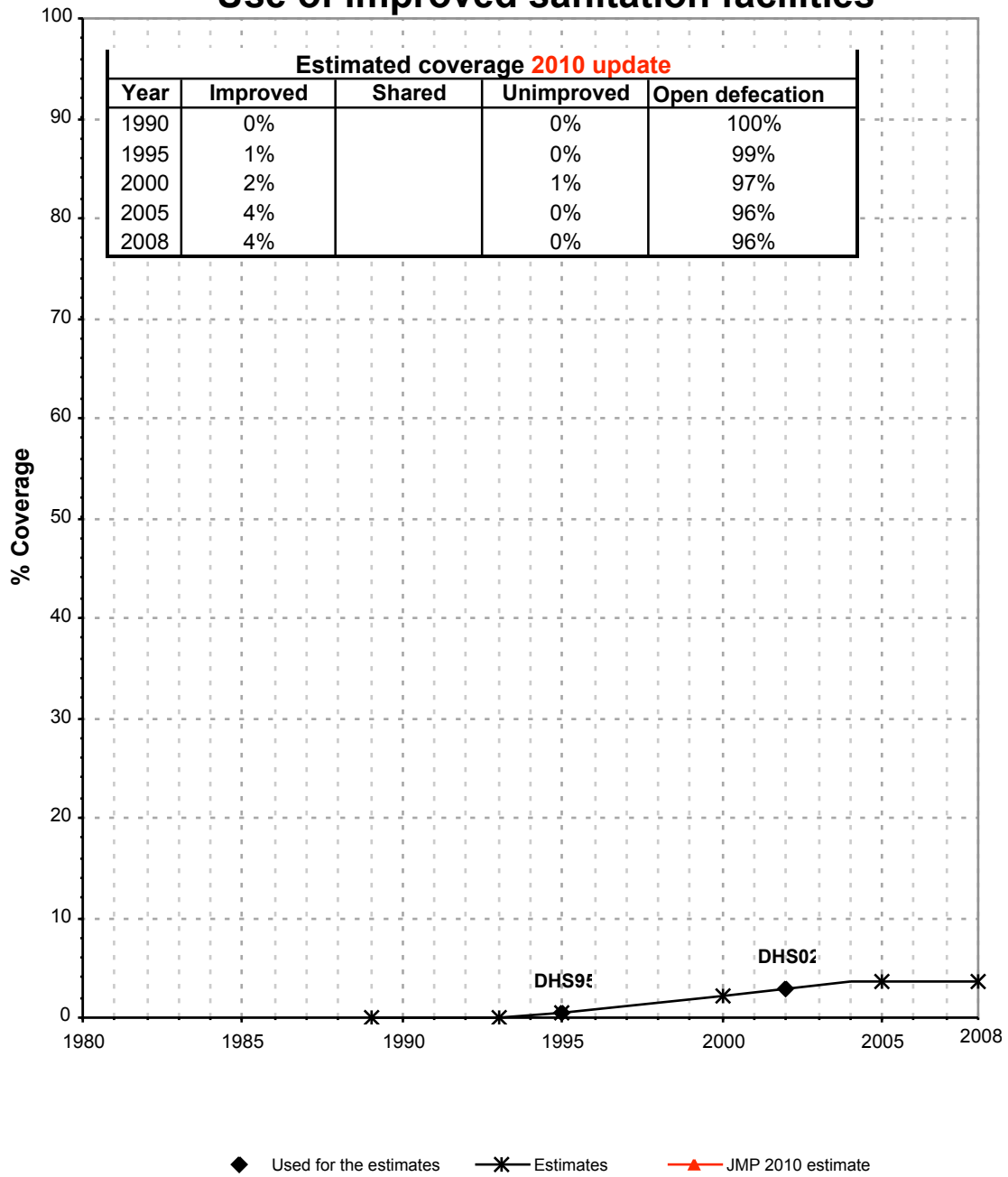
Use of sanitation facilities		DHS95			Eritrea			Use of sanitation facilities		JMP99			Eritrea		
Demographic and Health Survey					Global Water Supply and Sanitation Assessment 2000.					Water Supply and Sanitation Sector Questionnaire - 1999. Form 6 sent to WHO.					
					1995					1999					
Original denomination	Classification	Urban	Rural	Total	Original denomination	Classification	Urban	Rural	Total						
	Flush and pour flush	45.1	0.1			Flush and pour flush									
	to piped sewer system				Population served with household connections to conventional	to piped sewer system									
	to septic tank					to septic tank									
	to pit					to pit									
	to unknown place/ not sure/DK					to unknown place/ not sure/DK									
	to elsewhere					to elsewhere									
	Flush/toilets	45.1	0.1			Flush/toilets									
	to piped sewer system					to piped sewer system									
	to septic tank					to septic tank									
	to pit					to pit									
	to unknown place/ not sure/DK					to unknown place/ not sure/DK									
	to elsewhere					to elsewhere									
Own flush toilet	Private flush/toilet	29.9	0.1			Private flush/toilet									
	to piped sewer system					to piped sewer system									
	to septic tank					to septic tank									
	to pit					to pit									
	to unknown place/ not sure/DK					to unknown place/ not sure/DK									
	to elsewhere					to elsewhere									
Shared flush toilet	Public/shared flush/toilet	15.2	0.0			Public/shared flush/toilet									
	to piped sewer system					to piped sewer system									
	to septic tank					to septic tank									
	to pit					to pit									
	to unknown place/ not sure/DK					to unknown place/ not sure/DK									
	to elsewhere					to elsewhere									
	Latrines	20.9	0.8			Latrines									
	Pour flush latrines					Pour flush latrines									
	to piped sewer system					to piped sewer system									
	to septic tank					to septic tank									
	to pit					to pit									
	to unknown place/ not sure/DK					to unknown place/ not sure/DK									
	to elsewhere					to elsewhere									
	Private pour flush latrine					Private pour flush latrine									
	to piped sewer system					to piped sewer system									
	to septic tank					to septic tank									
	to pit					to pit									
	to unknown place/ not sure/DK					to unknown place/ not sure/DK									
	to elsewhere					to elsewhere									
	Public/shared pour flush latrine					Public/shared pour flush latrine									
	to piped sewer system					to piped sewer system									
	to septic tank					to septic tank									
	to pit					to pit									
	to unknown place/ not sure/DK					to unknown place/ not sure/DK									
	to elsewhere					to elsewhere									
	Dry latrines	20.9	0.8			Dry latrines									
	Improved latrines	2.7	0.1			Improved latrines									
Ventilated improved pit	Ventilated Improved Pit latrine	2.7	0.1			Ventilated Improved Pit latrine									
	Pit latrine with slab/covered latrine					Pit latrine with slab/covered latrine									
Traditional pit toilet	Traditional latrine	18.2	0.7			Traditional latrine									
	Pit latrine without slab/open pit					Pit latrine without slab/open pit									
	Hanging toilet/hanging latrine					Hanging toilet/hanging latrine									
	Bucket latrine					Bucket latrine									
	Other					Other									
	Private Latrines					Private Latrines									
	Ventilated Improved Pit latrine					Ventilated Improved Pit latrine									
	Pit latrine with slab/covered latrine					Pit latrine with slab/covered latrine									
	Traditional latrine					Traditional latrine									
	Pit latrine without slab/open pit					Pit latrine without slab/open pit									
	Hanging toilet/hanging latrine					Hanging toilet/hanging latrine									
	Bucket latrine					Bucket latrine									
	Other					Other									
	Public/shared Latrines					Public/shared Latrines									
	Ventilated Improved Pit latrine					Ventilated Improved Pit latrine									
	Pit latrine with slab/covered latrine					Pit latrine with slab/covered latrine									
	Traditional latrine					Traditional latrine									
	Pit latrine without slab/open pit					Pit latrine without slab/open pit									
	Hanging toilet/hanging latrine					Hanging toilet/hanging latrine									
	Bucket latrine					Bucket latrine									
	Other					Other									
	Composting toilets					Composting toilets									
	Composting toilet (private)					Composting toilet (private)									
	Composting toilet (shared)					Composting toilet (shared)									
	Other improved				Population without household connections but served	Other improved									
	Other					Other									
	Other					Other									
No facility/ bush	No facility, bush, field	33.9	99.0		Total population unserved	No facility, bush, field									
	Other unimproved					Other unimproved									
	Other					Other									
	Other					Other									
Missing info.	DK/missing information	0.0	0.1			DK/missing information									
	Total	99.9	100.0			Total									
Calculations					Calculations										
	50% of traditional latrines considered improved	9.1	0.4												
Estimations					Estimations										
	50% of flush considered connected to sewer	22.6	0.1												
Access to improved sanitation :		57%	1%		Access to improved plus shared sanitation:										
Access to sewerage connections :		23%	0%		Access to sewerage connections :										
Used for the estimates		Yes	Yes		Used for the estimates		No	No							
Used for the estimates		Yes	Yes		Used for the estimates		No	No							
Ratios	Shared improved facilities/all improved facilities	13%	13%		Ratios	Shared improved facilities/all improved facilities									
	Improved latrine / All latrines					Improved latrine / All latrines									
	Covered dry latrines / All dry latrines					Covered dry latrines / All dry latrines									
	VIP / All latrines	13%	13%			VIP / All latrines									
	Traditional latrines / All latrines	87%	88%			Traditional latrines / All latrines									
	Improved + traditional latrines / All latrines	100%	100%			Improved + traditional latrines / All latrines									
	Sewerage connection among flush/pour flush					Sewerage connection among flush									
	Sewerage connection among flush														
Number of people covered by the survey:					Number of people covered by the survey:										
Number of households covered by the survey:					Number of households covered by the survey:										
Total population:					Total population:										
Comments					Comments										

Eritrea			SANITATION															
			URBAN								RURAL							
			Sewer connection		Total		Open defecation		Shared		Sewer connection		Total		Open defecation		Shared	
Source	Code	Year	Used	Not used	Used	Not used	Used	Not used	Used	Not used	Used	Not used	Used	Not used	Used	Not used	Used	Not used
Demographic and Health Survey	DHS95	1995	22.6		56.9		33.9				0.1		0.6		99.0			
Global Water Supply and Sanitation Assessment 2000.	JMP99	1999																
Demographic and Health Survey	DHS02	2002	22.6		52.8		39.4				0.1		2.9		96.4			

Eritrea - urban - Use of improved sanitation facilities



Eritrea - rural - Use of improved sanitation facilities



Sanitation

Eritrea	Sanitation coverage estimates					
	Urban (%)		Rural (%)		Total (%)	
	1990	2008	1990	2008	1990	2008
Improved facilities	58	52	0	4	9	14
Shared facilities						
Unimproved facilities	10	7	0	0	2	1
Open defecation	32	41	100	96	89	85

Source: WHO/UNICEF JMP, 2010

Eritrea	Urban		Rural		Total	
	1990	2008	1990	2008	1990	2008
Population (x1000)	499	1,017	2,659	3,910	3,158	4,927

Source: UN / Population Division, 2008

