

WHO / UNICEF

Joint Monitoring Programme
for Water Supply and Sanitation

Estimates for the use of

**Improved Drinking-Water Sources
and Improved Sanitation Facilities**

Updated March 2010

childinfo.org

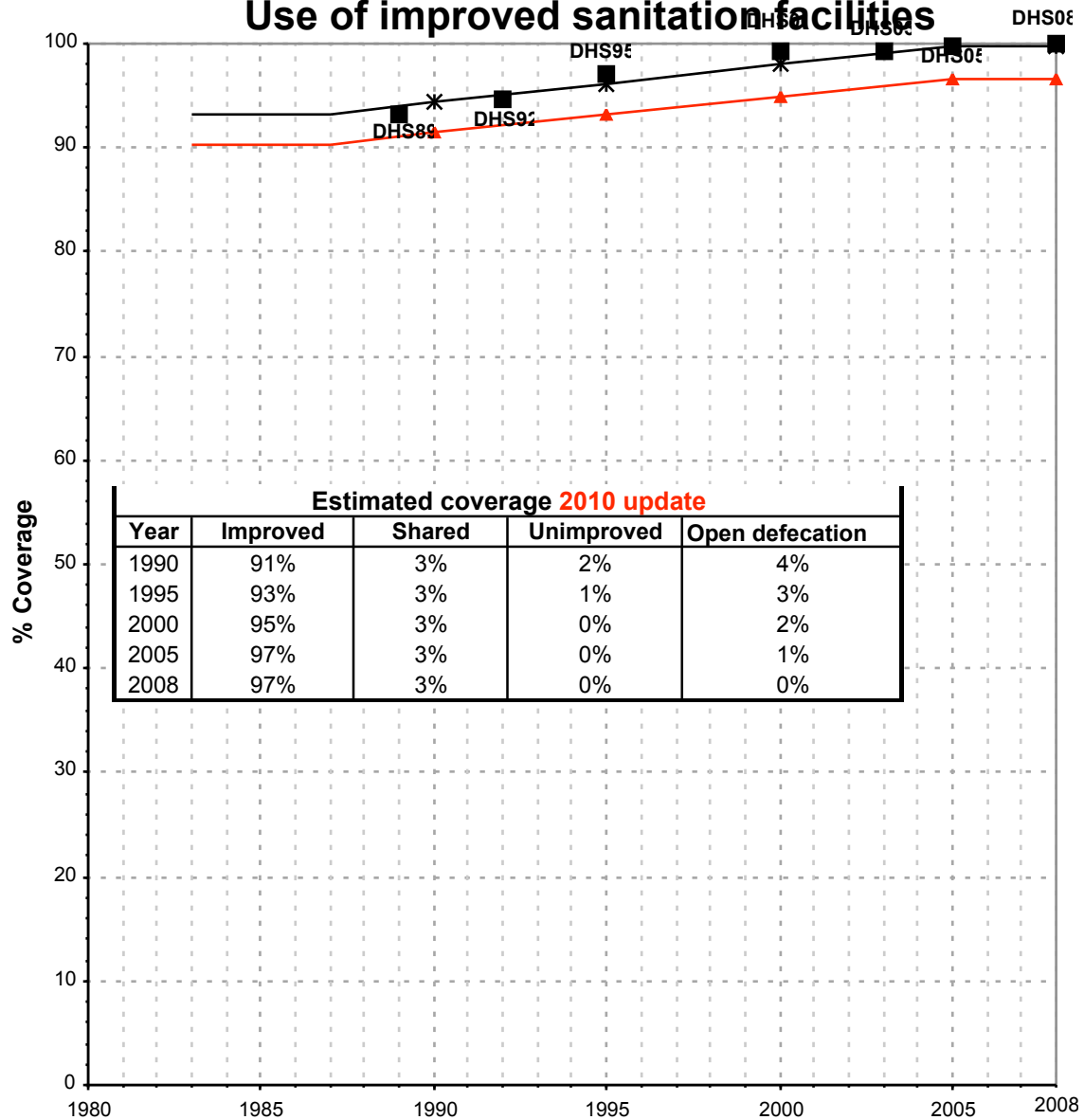
| Use of sanitation facilities | | DHS95 | | | Egypt | | | Use of sanitation facilities | | CEN96 | | | Egypt | | |
|---|--|------------|------------|--|---|--|------------|------------------------------|-------|-------|--|--|-------|--|--|
| Demographic and Health Survey | | | | | 1995 | | | Census | | | | | 1996 | | |
| Original denomination | Classification | Urban | Rural | Total | Original denomination | Classification | Urban | Rural | Total | | | | | | |
| | Flush and pour flush | 97.2 | 70.9 | 84.3 | | Flush and pour flush | 48.1 | 10.3 | | | | | | | |
| | to piped sewer system | 50.4 | 6.2 | 28.7 | | to piped sewer system | 48.1 | 10.3 | | | | | | | |
| | to septic tank | 1.9 | 1.4 | 1.7 | | to septic tank | | | | | | | | | |
| | to pit | | | | | to pit | | | | | | | | | |
| | to unknown place/ not sure/DK | | | | | to unknown place/ not sure/DK | | | | | | | | | |
| | to elsewhere | | | | | to elsewhere | | | | | | | | | |
| | Flush/toilets | 52.3 | 7.6 | 30.4 | | Flush/toilets | 48.1 | 10.3 | | | | | | | |
| Modern flush toilet | to piped sewer system | 50.4 | 6.2 | 28.7 | | to piped sewer system | 48.1 | 10.3 | | | | | | | |
| Traditional with tank flush | to septic tank | 1.9 | 1.4 | 1.7 | | to septic tank | | | | | | | | | |
| | to pit | | | | | to pit | | | | | | | | | |
| | to unknown place/ not sure/DK | | | | | to unknown place/ not sure/DK | | | | | | | | | |
| | to elsewhere | | | | | to elsewhere | | | | | | | | | |
| | Private flush/toilet | | | | | Private flush/toilet | | | | | | | | | |
| | to piped sewer system | | | | | to piped sewer system | | | | | | | | | |
| | to septic tank | | | | | to septic tank | | | | | | | | | |
| | to pit | | | | | to pit | | | | | | | | | |
| | to unknown place/ not sure/DK | | | | | to unknown place/ not sure/DK | | | | | | | | | |
| | to elsewhere | | | | | to elsewhere | | | | | | | | | |
| | Public/shared flush/toilet | | | | | Public/shared flush/toilet | 48.1 | 10.3 | | | | | | | |
| | to piped sewer system | | | | public sewer connection | to piped sewer system | 48.1 | 10.3 | | | | | | | |
| | to septic tank | | | | | to septic tank | | | | | | | | | |
| | to pit | | | | | to pit | | | | | | | | | |
| | to unknown place/ not sure/DK | | | | | to unknown place/ not sure/DK | | | | | | | | | |
| | to elsewhere | | | | | to elsewhere | | | | | | | | | |
| | Latrines | 46.5 | 81.1 | 63.4 | | Latrines | | | | | | | | | |
| Traditional with bucket flush | Pour flush latrines | 44.9 | 63.3 | 53.9 | | Pour flush latrines | | | | | | | | | |
| | to piped sewer system | | | | | to piped sewer system | | | | | | | | | |
| | to septic tank | | | | | to septic tank | | | | | | | | | |
| | to pit | | | | | to pit | | | | | | | | | |
| | to unknown place/ not sure/DK | | | | | to unknown place/ not sure/DK | | | | | | | | | |
| | to elsewhere | | | | | to elsewhere | | | | | | | | | |
| | Private pour flush latrine | | | | | Private pour flush latrine | | | | | | | | | |
| | to piped sewer system | | | | | to piped sewer system | | | | | | | | | |
| | to septic tank | | | | | to septic tank | | | | | | | | | |
| | to pit | | | | | to pit | | | | | | | | | |
| | to unknown place/ not sure/DK | | | | | to unknown place/ not sure/DK | | | | | | | | | |
| | to elsewhere | | | | | to elsewhere | | | | | | | | | |
| | Public/shared pour flush latrine | | | | | Public/shared pour flush latrine | | | | | | | | | |
| | to piped sewer system | | | | | to piped sewer system | | | | | | | | | |
| | to septic tank | | | | | to septic tank | | | | | | | | | |
| | to pit | | | | | to pit | | | | | | | | | |
| | to unknown place/ not sure/DK | | | | | to unknown place/ not sure/DK | | | | | | | | | |
| | to elsewhere | | | | | to elsewhere | | | | | | | | | |
| | Dry latrines | 1.6 | 17.8 | 9.5 | | Dry latrines | | | | | | | | | |
| | Improved latrines | | | | | Improved latrines | | | | | | | | | |
| | Ventilated Improved Pit latrine | | | | | Ventilated Improved Pit latrine | | | | | | | | | |
| | Pit latrine with slab/covered latrine | | | | | Pit latrine with slab/covered latrine | | | | | | | | | |
| | Traditional latrine | | | | | Traditional latrine | | | | | | | | | |
| Pit toilet/ latrine | Pit latrine without slab/open pit | 1.6 | 17.8 | 9.5 | | Pit latrine without slab/open pit | | | | | | | | | |
| | Hanging toilet/hanging latrine | | | | | Hanging toilet/hanging latrine | | | | | | | | | |
| | Bucket latrine | | | | | Bucket latrine | | | | | | | | | |
| | Other | | | | | Other | | | | | | | | | |
| | Private Latrines | | | | | Private Latrines | | | | | | | | | |
| | Ventilated Improved Pit latrine | | | | | Ventilated Improved Pit latrine | | | | | | | | | |
| | Pit latrine with slab/covered latrine | | | | | Pit latrine with slab/covered latrine | | | | | | | | | |
| | Traditional latrine | | | | | Traditional latrine | | | | | | | | | |
| | Pit latrine without slab/open pit | | | | | Pit latrine without slab/open pit | | | | | | | | | |
| | Hanging toilet/hanging latrine | | | | | Hanging toilet/hanging latrine | | | | | | | | | |
| | Bucket latrine | | | | | Bucket latrine | | | | | | | | | |
| | Other | | | | | Other | | | | | | | | | |
| | Public/shared Latrines | | | | | Public/shared Latrines | | | | | | | | | |
| | Ventilated Improved Pit latrine | | | | | Ventilated Improved Pit latrine | | | | | | | | | |
| | Pit latrine with slab/covered latrine | | | | | Pit latrine with slab/covered latrine | | | | | | | | | |
| | Traditional latrine | | | | | Traditional latrine | | | | | | | | | |
| | Pit latrine without slab/open pit | | | | | Pit latrine without slab/open pit | | | | | | | | | |
| | Hanging toilet/hanging latrine | | | | | Hanging toilet/hanging latrine | | | | | | | | | |
| | Bucket latrine | | | | | Bucket latrine | | | | | | | | | |
| | Other | | | | | Other | | | | | | | | | |
| | Composting toilets | | | | | Composting toilets | | | | | | | | | |
| | Composting toilet (private) | | | | | Composting toilet (private) | | | | | | | | | |
| | Composting toilet (shared) | | | | | Composting toilet (shared) | | | | | | | | | |
| | Other improved | | | | | Other improved | 39.2 | 79.0 | | | | | | | |
| | Other | | | | other (private sewer connection, septic tank, shared latrine) | Other | 39.2 | 79.0 | | | | | | | |
| | Other | | | | | Other | | | | | | | | | |
| No facilities | No facility, bush, field | 0.9 | 9.6 | 5.2 | no facility | No facility, bush, field | 12.7 | 10.6 | | | | | | | |
| | Other unimproved | 0.2 | 1.7 | 0.9 | | Other unimproved | | | | | | | | | |
| | Other | 0.2 | 1.7 | 0.9 | | Other | | | | | | | | | |
| | Other | | | | | Other | | | | | | | | | |
| | DK/missing information | | | | | DK/missing information | | | | | | | | | |
| | Total | 99.9 | 100.0 | 99.9 | | Total | 100.0 | 100.0 | | | | | | | |
| Calculations | | | | | Calculations | | | | | | | | | | |
| Estimations | | | | | Estimations | | | | | | | | | | |
| Access to improved sanitation : | | 97% | 71% | | Access to improved sanitation : | | 87% | 89% | | | | | | | |
| Access to sewerage connections : | | 50% | 6% | | Access to sewerage connections : | | 48% | 10% | | | | | | | |
| Used for the estimates | | Yes | Yes | | Used for the estimates | | No | No | | | | | | | |
| Used for the estimates | | Yes | Yes | | Used for the estimates | | Yes | Yes | | | | | | | |
| Ratios | Shared improved facilities/all improved facilities | 97% | 78% | 85% | Ratios | Shared improved facilities/all improved facilities | | | | | | | | | |
| | Improved latrine / All latrines | | | | | Improved latrine / All latrines | | | | | | | | | |
| | Covered dry latrines / All dry latrines | | | | | Covered dry latrines / All dry latrines | | | | | | | | | |
| | VIP / All latrines | | | | | VIP / All latrines | | | | | | | | | |
| | Traditional latrines / All latrines | | | | | Traditional latrines / All latrines | | | | | | | | | |
| | Improved + traditional latrines / All latrines | | | | | Improved + traditional latrines / All latrines | | | | | | | | | |
| Sewerage connection among flush/pour flush | 51.9 | 8.7 | | Sewerage connection among flush/pour flush | 100.0 | 100.0 | | | | | | | | | |
| Sewerage connection among flush | 96.4 | 81.6 | | Sewerage connection among flush | 100.0 | 100.0 | | | | | | | | | |
| Number of people covered by the survey: | | | | | Number of people covered by the survey: | | 25469 | 31738 | | | | | | | |
| Number of households covered by the survey: | | | | | Number of households covered by the survey: | | | | | | | | | | |
| Total population: | | | | | Total population: | | | | | | | | | | |
| Comments | | | | | Comments | Note: because the "other" category is a mixture of improved and unimproved sanitation, no total access could be calculated | | | | | | | | | |

| Use of sanitation facilities | | DHS00 | | | Egypt | | | Use of sanitation facilities | | DHS03 | | | Egypt | | |
|---|--|------------|------------|--|---|--|------------|-------------------------------|-------|-------|--|--|-------|--|--|
| Demographic and Health Survey | | | | | 2000 | | | Demographic and Health Survey | | | | | 2003 | | |
| Original denomination | Classification | Urban | Rural | Total | Original denomination | Classification | Urban | Rural | Total | | | | | | |
| | Flush and pour flush | 99.2 | 89.6 | 94.5 | | Flush and pour flush | 99.3 | 93.9 | 96.6 | | | | | | |
| | to piped sewer system | 59.2 | 7.8 | 33.4 | | to piped sewer system | 67.8 | 13.0 | 40.4 | | | | | | |
| | to septic tank | 3.4 | 3.7 | 3.6 | | to septic tank | 1.0 | 2.0 | 1.5 | | | | | | |
| | to pit | | | | | to pit | | | | | | | | | |
| | to unknown place/ not sure/DK | | | | | to unknown place/ not sure/DK | | | | | | | | | |
| | to elsewhere | | | | | to elsewhere | | | | | | | | | |
| | Flush/toilets | 62.6 | 11.5 | 37.0 | | Flush/toilets | 68.8 | 15.0 | 41.9 | | | | | | |
| Modern flush toilet | to piped sewer system | 59.2 | 7.8 | 33.4 | Modern flush toilet | to piped sewer system | 67.8 | 13.0 | 40.4 | | | | | | |
| Traditional with tank flush | to septic tank | 3.4 | 3.7 | 3.6 | Traditional with tank flush | to septic tank | 1.0 | 2.0 | 1.5 | | | | | | |
| | to pit | | | | | to pit | | | | | | | | | |
| | to unknown place/ not sure/DK | | | | | to unknown place/ not sure/DK | | | | | | | | | |
| | to elsewhere | | | | | to elsewhere | | | | | | | | | |
| | Private flush/toilet | | | | | Private flush/toilet | | | | | | | | | |
| | to piped sewer system | | | | | to piped sewer system | | | | | | | | | |
| | to septic tank | | | | | to septic tank | | | | | | | | | |
| | to pit | | | | | to pit | | | | | | | | | |
| | to unknown place/ not sure/DK | | | | | to unknown place/ not sure/DK | | | | | | | | | |
| | to elsewhere | | | | | to elsewhere | | | | | | | | | |
| | Public/shared flush/toilet | | | | | Public/shared flush/toilet | | | | | | | | | |
| | to piped sewer system | | | | | to piped sewer system | | | | | | | | | |
| | to septic tank | | | | | to septic tank | | | | | | | | | |
| | to pit | | | | | to pit | | | | | | | | | |
| | to unknown place/ not sure/DK | | | | | to unknown place/ not sure/DK | | | | | | | | | |
| | to elsewhere | | | | | to elsewhere | | | | | | | | | |
| | Latrines | 37.1 | 83.6 | 60.6 | | Latrines | 30.9 | 82.4 | 56.6 | | | | | | |
| Traditional with bucket flush | Pour flush latrines | 36.6 | 78.1 | 57.5 | Traditional with bucket flush | Pour flush latrines | 30.5 | 78.9 | 54.7 | | | | | | |
| | to piped sewer system | | | | | to piped sewer system | | | | | | | | | |
| | to septic tank | | | | | to septic tank | | | | | | | | | |
| | to pit | | | | | to pit | | | | | | | | | |
| | to unknown place/ not sure/DK | | | | | to unknown place/ not sure/DK | | | | | | | | | |
| | to elsewhere | | | | | to elsewhere | | | | | | | | | |
| | Private pour flush latrine | | | | | Private pour flush latrine | | | | | | | | | |
| | to piped sewer system | | | | | to piped sewer system | | | | | | | | | |
| | to septic tank | | | | | to septic tank | | | | | | | | | |
| | to pit | | | | | to pit | | | | | | | | | |
| | to unknown place/ not sure/DK | | | | | to unknown place/ not sure/DK | | | | | | | | | |
| | to elsewhere | | | | | to elsewhere | | | | | | | | | |
| | Public/shared pour flush latrine | | | | | Public/shared pour flush latrine | | | | | | | | | |
| | to piped sewer system | | | | | to piped sewer system | | | | | | | | | |
| | to septic tank | | | | | to septic tank | | | | | | | | | |
| | to pit | | | | | to pit | | | | | | | | | |
| | to unknown place/ not sure/DK | | | | | to unknown place/ not sure/DK | | | | | | | | | |
| | to elsewhere | | | | | to elsewhere | | | | | | | | | |
| | Dry latrines | 0.5 | 5.4 | 3.0 | | Dry latrines | 0.4 | 3.5 | 1.9 | | | | | | |
| | Improved latrines | | | | | Improved latrines | | | | | | | | | |
| | Ventilated Improved Pit latrine | | | | | Ventilated Improved Pit latrine | | | | | | | | | |
| | Pit latrine with slab/covered latrine | | | | | Pit latrine with slab/covered latrine | | | | | | | | | |
| | Traditional latrine | | | | | Traditional latrine | | | | | | | | | |
| | Pit latrine without slab/open pit | 0.5 | 5.4 | 3.0 | Pit toilet/ latrine | Pit latrine without slab/open pit | 0.4 | 3.5 | 1.9 | | | | | | |
| | Hanging toilet/hanging latrine | | | | | Hanging toilet/hanging latrine | | | | | | | | | |
| | Bucket latrine | | | | | Bucket latrine | | | | | | | | | |
| | Other | | | | | Other | | | | | | | | | |
| | Private Latrines | 0.5 | 5.4 | 3.0 | | Private Latrines | | | | | | | | | |
| | Ventilated Improved Pit latrine | | | | | Ventilated Improved Pit latrine | | | | | | | | | |
| | Pit latrine with slab/covered latrine | | | | | Pit latrine with slab/covered latrine | | | | | | | | | |
| | Traditional latrine | | | | | Traditional latrine | | | | | | | | | |
| | Pit latrine without slab/open pit | 0.5 | 5.4 | 3.0 | | Pit latrine without slab/open pit | | | | | | | | | |
| | Hanging toilet/hanging latrine | | | | | Hanging toilet/hanging latrine | | | | | | | | | |
| | Bucket latrine | | | | | Bucket latrine | | | | | | | | | |
| | Other | | | | | Other | | | | | | | | | |
| | Public/shared Latrines | | | | | Public/shared Latrines | | | | | | | | | |
| | Ventilated Improved Pit latrine | | | | | Ventilated Improved Pit latrine | | | | | | | | | |
| | Pit latrine with slab/covered latrine | | | | | Pit latrine with slab/covered latrine | | | | | | | | | |
| | Traditional latrine | | | | | Traditional latrine | | | | | | | | | |
| | Pit latrine without slab/open pit | | | | | Pit latrine without slab/open pit | | | | | | | | | |
| | Hanging toilet/hanging latrine | | | | | Hanging toilet/hanging latrine | | | | | | | | | |
| | Bucket latrine | | | | | Bucket latrine | | | | | | | | | |
| | Other | | | | | Other | | | | | | | | | |
| | Composting toilets | | | | | Composting toilets | | | | | | | | | |
| | Composting toilet (private) | | | | | Composting toilet (private) | | | | | | | | | |
| | Composting toilet (shared) | | | | | Composting toilet (shared) | | | | | | | | | |
| | Other improved | | | | | Other improved | | | | | | | | | |
| | Other | | | | | Other | | | | | | | | | |
| | Other | | | | | Other | | | | | | | | | |
| No facilities | No facility, bush, field | 0.3 | 4.9 | 2.6 | No facilities | No facility, bush, field | 0.2 | 2.7 | 1.5 | | | | | | |
| | Other unimproved | | | | | Other unimproved | | | | | | | | | |
| | Other | | | | | Other | | | | | | | | | |
| | Other | | | | | Other | | | | | | | | | |
| | DK/missing information | | | | | DK/missing information | | | | | | | | | |
| | Total | 100.0 | 99.9 | 100.1 | | Total | 99.9 | 100.1 | 100.0 | | | | | | |
| Calculations | | | | | Calculations | | | | | | | | | | |
| Estimations | | | | | Estimations | | | | | | | | | | |
| Access to improved sanitation : | | 99% | 90% | | Access to improved sanitation : | | 99% | 94% | | | | | | | |
| Access to sewerage connections : | | 59% | 8% | | Access to sewerage connections : | | 68% | 13% | | | | | | | |
| Used for the estimates | | Yes | Yes | | Used for the estimates | | Yes | Yes | | | | | | | |
| Used for the estimates | | Yes | Yes | | Used for the estimates | | Yes | Yes | | | | | | | |
| Ratios | Shared improved facilities/all improved facilities | 5.6% | 6.2% | | Ratios | Shared improved facilities/all improved facilities | 2.5% | 5.1% | | | | | | | |
| | Improved latrine / All latrines | 99% | 94% | 95% | | Improved latrine / All latrines | 99% | 96% | 97% | | | | | | |
| | Covered dry latrines / All dry latrines | | | | | Covered dry latrines / All dry latrines | | | | | | | | | |
| | VIP / All latrines | | | | | VIP / All latrines | | | | | | | | | |
| | Traditional latrines / All latrines | | | | | Traditional latrines / All latrines | | | | | | | | | |
| | Improved + traditional latrines / All latrines | | | | | Improved + traditional latrines / All latrines | | | | | | | | | |
| Sewerage connection among flush/pour flush | 59.7 | 8.7 | | Sewerage connection among flush/pour flush | 68.3 | 13.8 | | | | | | | | | |
| Sewerage connection among flush | 94.6 | 67.8 | | Sewerage connection among flush | 98.5 | 86.7 | | | | | | | | | |
| Number of people covered by the survey: | | | | | Number of people covered by the survey: | | | | | | | | | | |
| Number of households covered by the survey: | | | | | Number of households covered by the survey: | | | | | | | | | | |
| Total population: | | | | | Total population: | | | | | | | | | | |
| Comments | | | | | Comments | | | | | | | | | | |

| Use of sanitation facilities | | DHS05 | | | Egypt | | | Use of sanitation facilities | | DHS08 | | | Egypt | | |
|---|--|-------------|------------|--|---|--|-------------|------------------------------|-------------|-------|--|--|-------|--|--|
| Demographic and Health Survey | | | | | | | | | | | | | | | |
| | | 2005 | | | | | | | | 2008 | | | | | |
| Original denomination | Classification | Urban | Rural | Total | Original denomination | Classification | Urban | Rural | Total | | | | | | |
| | Flush and pour flush | 99.7 | 96.0 | 97.8 | | Flush and pour flush | 99.8 | 98.8 | 99.3 | | | | | | |
| | to piped sewer system | 71.2 | 17.1 | 43.0 | | to piped sewer system | 74.4 | 18.3 | 42.2 | | | | | | |
| | to septic tank | 1.5 | 2.3 | 1.9 | | to septic tank | 1.3 | 2.9 | 2.3 | | | | | | |
| | to pit | | | | | to pit | | | | | | | | | |
| | to unknown place/ not sure/DK | | | | | to unknown place/ not sure/DK | | | | | | | | | |
| | to elsewhere | | | | | to elsewhere | | | | | | | | | |
| | Flush/toilets | 72.7 | 19.4 | 44.9 | | Flush/toilets | 75.7 | 21.2 | 44.5 | | | | | | |
| Modern flush toilet | to piped sewer system | 71.2 | 17.1 | 43.0 | Modern toilet | to piped sewer system or septic tank | 74.4 | 18.3 | 42.2 | | | | | | |
| Traditional with tank flush | to septic tank | 1.5 | 2.3 | 1.9 | Traditional with tank flush | to piped sewer system or septic tank | 1.3 | 2.9 | 2.3 | | | | | | |
| | to pit | | | | | to piped sewer system or septic tank | | | | | | | | | |
| | to unknown place/ not sure/DK | | | | | to unknown place/ not sure/DK | | | | | | | | | |
| | to elsewhere | | | | | to elsewhere | | | | | | | | | |
| | Private flush/toilet | | | | | Private flush/toilet | | | | | | | | | |
| | to piped sewer system | | | | | to piped sewer system | | | | | | | | | |
| | to septic tank | | | | | to septic tank | | | | | | | | | |
| | to pit | | | | | to pit | | | | | | | | | |
| | to unknown place/ not sure/DK | | | | | to unknown place/ not sure/DK | | | | | | | | | |
| | to elsewhere | | | | | to elsewhere | | | | | | | | | |
| | Public/shared flush/toilet | | | | | Public/shared flush/toilet | | | | | | | | | |
| | to piped sewer system | | | | | to piped sewer system | | | | | | | | | |
| | to septic tank | | | | | to septic tank | | | | | | | | | |
| | to pit | | | | | to pit | | | | | | | | | |
| | to unknown place/ not sure/DK | | | | | to unknown place/ not sure/DK | | | | | | | | | |
| | to elsewhere | | | | | to elsewhere | | | | | | | | | |
| | Latrines | 27.1 | 78.4 | 63.9 | | Latrines | 24.2 | 78.1 | 55.1 | | | | | | |
| Traditional with bucket flush | Pour flush latrines | 27.0 | 76.6 | 62.9 | Traditional with bucket flush | Pour flush latrines | 24.1 | 77.6 | 54.6 | | | | | | |
| | to piped sewer system | | | | | to piped sewer system | | | | | | | | | |
| | to septic tank | | | | | to septic tank | | | | | | | | | |
| | to pit | | | | | to pit | | | | | | | | | |
| | to unknown place/ not sure/DK | | | | | to unknown place/ not sure/DK | | | | | | | | | |
| | to elsewhere | | | | | to elsewhere | | | | | | | | | |
| | Private pour flush latrine | | | | | Private pour flush latrine | | | | | | | | | |
| | to piped sewer system | | | | | to piped sewer system | | | | | | | | | |
| | to septic tank | | | | | to septic tank | | | | | | | | | |
| | to pit | | | | | to pit | | | | | | | | | |
| | to unknown place/ not sure/DK | | | | | to unknown place/ not sure/DK | | | | | | | | | |
| | to elsewhere | | | | | to elsewhere | | | | | | | | | |
| | Public/shared pour flush latrine | | | | | Public/shared pour flush latrine | | | | | | | | | |
| | to piped sewer system | | | | | to piped sewer system | | | | | | | | | |
| | to septic tank | | | | | to septic tank | | | | | | | | | |
| | to pit | | | | | to pit | | | | | | | | | |
| | to unknown place/ not sure/DK | | | | | to unknown place/ not sure/DK | | | | | | | | | |
| | to elsewhere | | | | | to elsewhere | | | | | | | | | |
| | Dry latrines | 0.1 | 1.8 | 1.0 | | Dry latrines | 0.1 | 0.5 | 0.3 | | | | | | |
| | Improved latrines | | | | | Improved latrines | 0.1 | 0.4 | 0.3 | | | | | | |
| | Ventilated Improved Pit latrine | | | | Ventilated improved pit latrine | Ventilated Improved Pit latrine | 0.1 | 0.4 | 0.3 | | | | | | |
| | Pit latrine with slab/covered latrine | | | | | Pit latrine with slab/covered latrine | | | | | | | | | |
| | Traditional latrine | | | | | Traditional latrine | | | | | | | | | |
| | Pit latrine without slab/open pit | 0.1 | 1.6 | 1.0 | | Pit latrine without slab/open pit | | | | | | | | | |
| Pit latrine toilet/bucket latrine | Hanging toilet/hanging latrine | | | | | Hanging toilet/hanging latrine | | | | | | | | | |
| | Bucket latrine | | | | | Bucket latrine | 0.0 | 0.1 | 0.0 | | | | | | |
| | Other | | | | | Other | | | | | | | | | |
| | Private Latrines | | | | | Private Latrines | | | | | | | | | |
| | Ventilated Improved Pit latrine | | | | | Ventilated Improved Pit latrine | | | | | | | | | |
| | Pit latrine with slab/covered latrine | | | | | Pit latrine with slab/covered latrine | | | | | | | | | |
| | Traditional latrine | | | | | Traditional latrine | | | | | | | | | |
| | Pit latrine without slab/open pit | | | | | Pit latrine without slab/open pit | | | | | | | | | |
| | Hanging toilet/hanging latrine | | | | | Hanging toilet/hanging latrine | | | | | | | | | |
| | Bucket latrine | | | | | Bucket latrine | | | | | | | | | |
| | Other | | | | | Other | | | | | | | | | |
| | Public/shared Latrines | | | | | Public/shared Latrines | 0.0 | 0.1 | 0.0 | | | | | | |
| | Ventilated Improved Pit latrine | | | | | Ventilated Improved Pit latrine | | | | | | | | | |
| | Pit latrine with slab/covered latrine | | | | | Pit latrine with slab/covered latrine | | | | | | | | | |
| | Traditional latrine | | | | | Traditional latrine | | | | | | | | | |
| | Pit latrine without slab/open pit | | | | | Pit latrine without slab/open pit | | | | | | | | | |
| | Hanging toilet/hanging latrine | | | | | Hanging toilet/hanging latrine | | | | | | | | | |
| | Bucket latrine | | | | Bucket toilet | Bucket latrine | 0.0 | 0.1 | 0.0 | | | | | | |
| | Other | | | | | Other | | | | | | | | | |
| | Composting toilets | | | | | Composting toilets | | | | | | | | | |
| | Composting toilet (private) | | | | | Composting toilet (private) | | | | | | | | | |
| | Composting toilet (shared) | | | | | Composting toilet (shared) | | | | | | | | | |
| | Other improved | | | | | Other improved | | | | | | | | | |
| | Other | | | | | Other | | | | | | | | | |
| | Other | | | | | Other | | | | | | | | | |
| No facilities | No facility, bush, field | 0.1 | 0.2 | 0.1 | No facility | No facility, bush, field | 0.1 | 0.6 | 0.4 | | | | | | |
| | Other unimproved | | | | | Other unimproved | | | | | | | | | |
| | Other | | | | | Other | | | | | | | | | |
| | Other | | | | | Other | | | | | | | | | |
| other/missing | DK/missing information | 0.1 | 2.0 | 1.1 | | DK/missing information | | | | | | | | | |
| | Total | 100.0 | 100.0 | 100.0 | | Total | 100.0 | 99.9 | 100.0 | | | | | | |
| Calculations | | | | | Calculations | | | | | | | | | | |
| Estimations | | | | | Estimations | | | | | | | | | | |
| Access to improved sanitation : | | 100% | 96% | | Access to improved sanitation : | | 100% | 99% | 100% | | | | | | |
| Access to sewerage connections : | | 71% | 17% | | Access to sewerage connections : | | 74% | 18% | 42% | | | | | | |
| Used for the estimates | | Yes | Yes | | Used for the estimates | | Yes | Yes | | | | | | | |
| Used for the estimates | | Yes | Yes | | Used for the estimates | | Yes | Yes | | | | | | | |
| Ratios | Shared improved facilities/all improved facilities | 2.7% | 8.9% | | Ratios | Shared improved facilities/all improved facilities | 1.6% | 6.0% | | | | | | | |
| | Improved latrine / All latrines | 100% | 98% | 98% | | Improved latrine / All latrines | 100% | 100% | 100% | | | | | | |
| | Covered dry latrines / All dry latrines | | | | | Covered dry latrines / All dry latrines | | | | | | | | | |
| | VIP / All latrines | | | | | VIP / All latrines | 100% | 80% | | | | | | | |
| | Traditional latrines / All latrines | | | | | Traditional latrines / All latrines | | | | | | | | | |
| | Improved + traditional latrines / All latrines | | | | | Improved + traditional latrines / All latrines | | | | | | | | | |
| Sewerage connection among flush/pour flush | 71.4 | 17.8 | | Sewerage connection among flush/pour flush | 74.5 | 18.5 | | | | | | | | | |
| Sewerage connection among flush | 97.9 | 88.1 | | Sewerage connection among flush | 88.3 | 86.3 | | | | | | | | | |
| Number of people covered by the survey: | | | | | Number of people covered by the survey: | | | | | | | | | | |
| Number of households covered by the survey: | | | | | Number of households covered by the survey: | | | | | | | | | | |
| Total population: | | | | | Total population: | | | | | | | | | | |
| Comments | | | | | Comments | | | | | | | | | | |

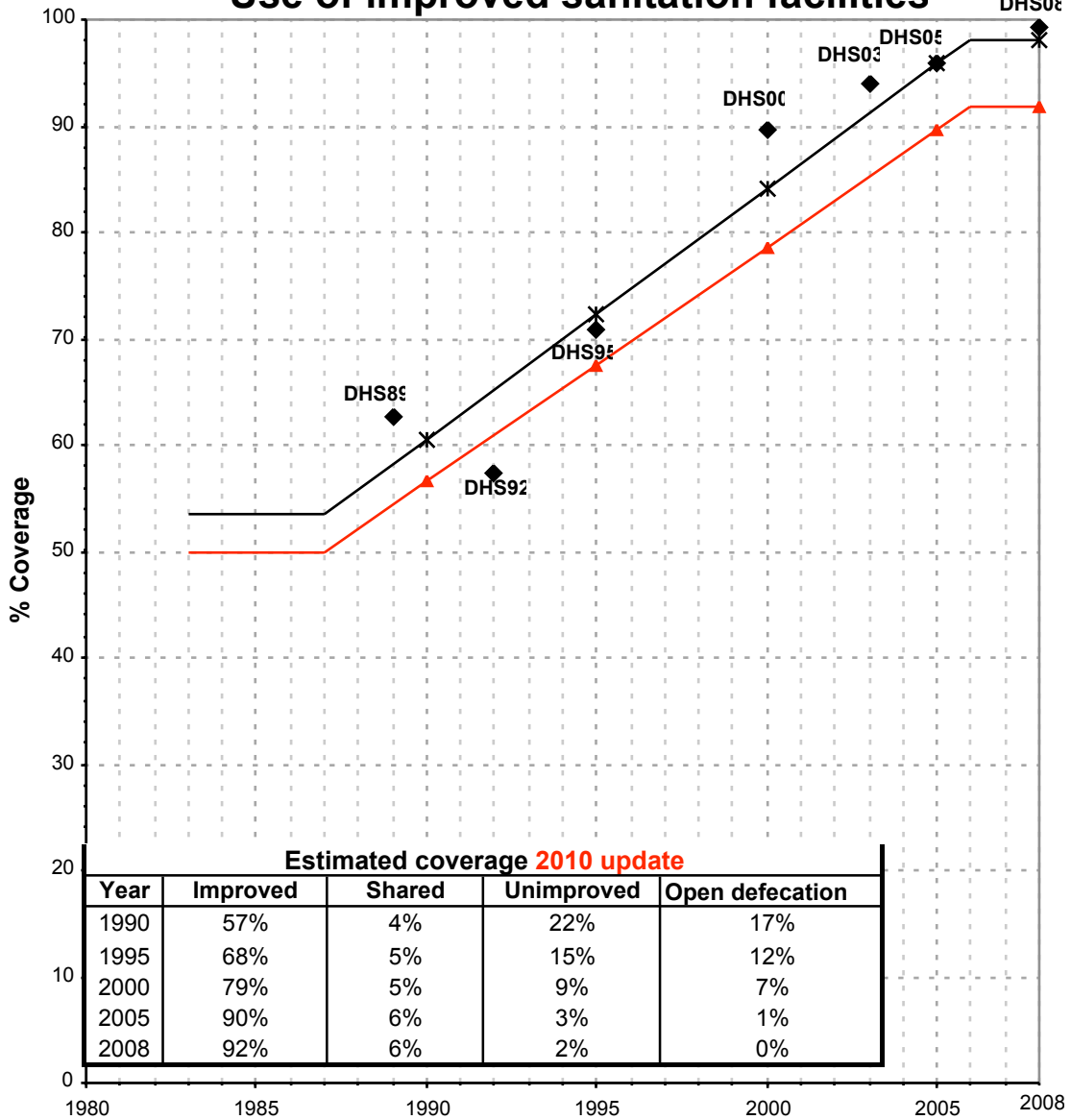
| Egypt | | | SANITATION | | | | | | | | | | | | | | | |
|---|--------|------|------------------|----------|-------|----------|-----------------|----------|--------|----------|------------------|----------|-------|----------|-----------------|----------|--------|----------|
| | | | URBAN | | | | | | | | RURAL | | | | | | | |
| | | | Sewer connection | | Total | | Open defecation | | Shared | | Sewer connection | | Total | | Open defecation | | Shared | |
| Source | Code | Year | Used | Not used | Used | Not used | Used | Not used | Used | Not used | Used | Not used | Used | Not used | Used | Not used | Used | Not used |
| Demographic and Health Survey | DHS89 | 1989 | 36.4 | | 93.1 | | 1.2 | | | | 2.1 | | 62.7 | | 18.3 | | | |
| Demographic and Health Survey | DHS92 | 1992 | 46.3 | | 94.7 | | 1.6 | | | | 5.7 | | 57.4 | | 17.9 | | | |
| Demographic and Health Survey | DHS95 | 1995 | 50.4 | | 97.2 | | 0.9 | | | | 6.2 | | 70.9 | | 9.6 | | | |
| Census | CEN96 | 1996 | 48.1 | | | 87.3 | 12.7 | | | | 10.3 | | | 89.4 | | 10.6 | | |
| Multiple Indicator Cluster Survey | MICS96 | 1996 | | | | 98.2 | | | | | | | | 78.9 | | | | |
| Global Water Supply and Sanitation Assessment 2000. | JMP99 | 1999 | | 48.1 | | 87.3 | | | | | | 9.7 | | 83.9 | | | | |
| Demographic and Health Survey | DHS00 | 2000 | 59.2 | | 99.2 | | 0.3 | | 5.6 | | 7.8 | | 89.6 | | 4.9 | | 6.2 | |
| Demographic and Health Survey | DHS03 | 2003 | 67.8 | | 99.3 | | 0.2 | | 2.5 | | 13.0 | | 93.9 | | 2.7 | | 5.1 | |
| Demographic and Health Survey | DHS05 | 2005 | 71.2 | | 99.7 | | 0.1 | | 2.7 | | 17.1 | | 96.0 | | 0.2 | | 8.9 | |
| | DHS08 | 2008 | 74.4 | | 99.9 | | 0.1 | | 1.6 | | 18.3 | | 99.2 | | 0.6 | | 6.0 | |
| Egypt Indepth Study | EIS97 | 1997 | | 26.1 | | 85.6 | | 6.3 | | | | 3.6 | | 71.6 | | 13.4 | | |

Egypt - urban - Use of improved sanitation facilities



■ Used for the estimates * Estimates ▲ JMP 2010 estimate

Egypt - rural - Use of improved sanitation facilities



◆ Used for the estimates *— Estimates ▲ JMP 2010 estimate

Sanitation

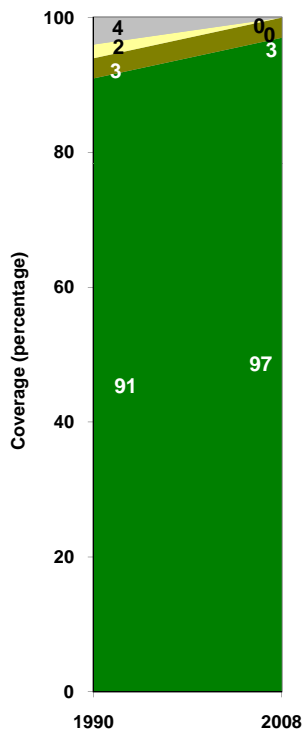
| Egypt | Sanitation coverage estimates | | | | | |
|-----------------------|-------------------------------|------|-----------|------|-----------|------|
| | Urban (%) | | Rural (%) | | Total (%) | |
| | 1990 | 2008 | 1990 | 2008 | 1990 | 2008 |
| Improved facilities | 91 | 97 | 57 | 92 | 72 | 94 |
| Shared facilities | 3 | 3 | 4 | 6 | 4 | 5 |
| Unimproved facilities | 2 | 0 | 22 | 2 | 13 | 1 |
| Open defecation | 4 | 0 | 17 | 0 | 11 | 0 |

Source: WHO/UNICEF JMP, 2010

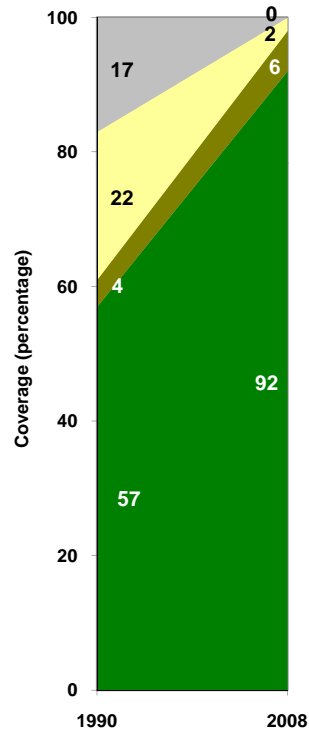
| Egypt | Urban | | Rural | | Total | |
|--------------------|--------|--------|--------|--------|--------|--------|
| | 1990 | 2008 | 1990 | 2008 | 1990 | 2008 |
| Population (x1000) | 25,124 | 34,786 | 32,661 | 46,741 | 57,785 | 81,527 |

Source: UN / Population Division, 2008

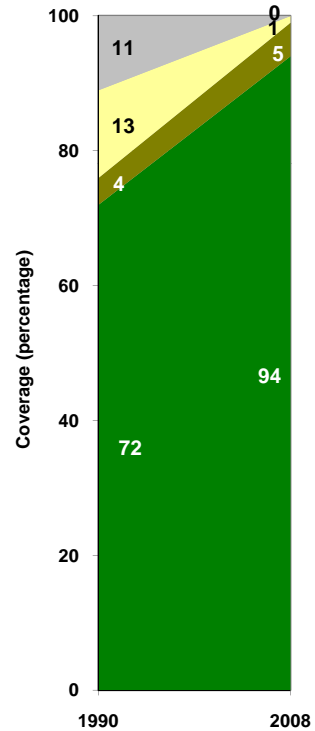
Urban sanitation trends



Rural sanitation trends



Total sanitation trends



- Open defecation
- Unimproved facilities
- Shared facilities
- Improved facilities

- Open defecation
- Unimproved facilities
- Shared facilities
- Improved facilities

- Open defecation
- Unimproved facilities
- Shared facilities
- Improved facilities