

**WHO / UNICEF**

**Joint Monitoring Programme**  
for Water Supply and Sanitation

Estimates for the use of

**Improved Drinking-Water Sources  
and Improved Sanitation Facilities**

Updated March 2010

[childinfo.org](http://childinfo.org)



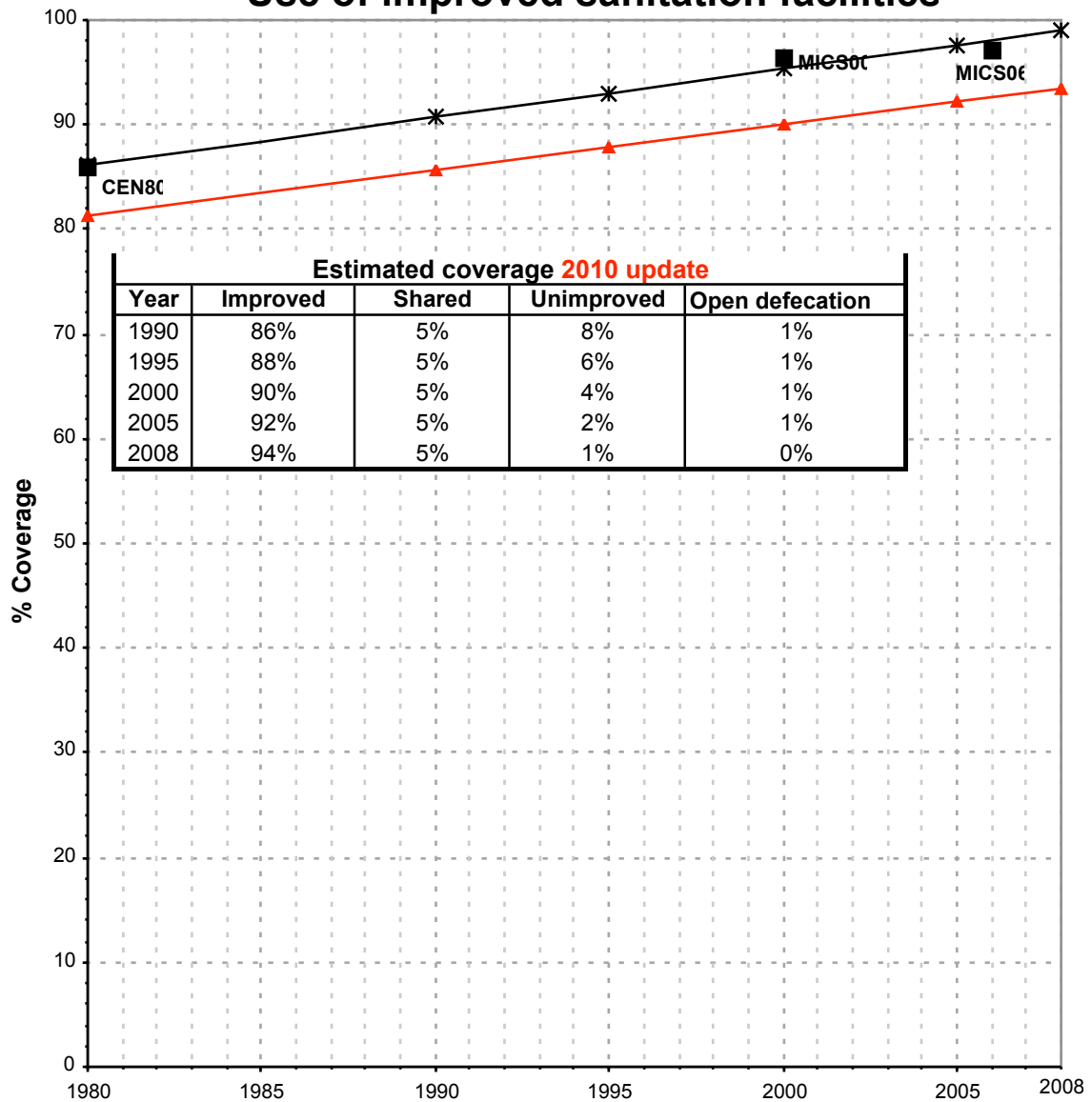
Use of sanitation facilities		JMP99			Cuba			Use of sanitation facilities		MICS00			Cuba				
Global Water Supply and Sanitation Assessment 2000.					Cuba					Demographic and Health Survey							
Water Supply and Sanitation Sector Questionnaire - 1999. Form 6 sent to WHO.					1998					Informe preliminar					2000		
Original denomination	Classification	Urban	Rural	Total	Original denomination	Classification	Urban	Rural	Total								
Population served with household connections to conventional	<b>Flush and pour flush</b> to piped sewer system to septic tank to pit to unknown place/ not sure/DK to elsewhere	47.9	25.4			<b>Flush and pour flush</b> to piped sewer system to septic tank to pit to unknown place/ not sure/DK to elsewhere	91.6	61.2	83.8								
	<b>Flush/toilets</b> to piped sewer system to septic tank to pit to unknown place/ not sure/DK to elsewhere				Inodoro conectado a alcantarillado/ pozo septico	<b>Flush/toilets</b> to piped sewer system to septic tank to pit to unknown place/ not sure/DK to elsewhere	76.3	29.3	64.3								
	<b>Private flush/toilet</b> to piped sewer system to septic tank to pit to unknown place/ not sure/DK to elsewhere					<b>Private flush/toilet</b> to piped sewer system to septic tank to pit to unknown place/ not sure/DK to elsewhere											
	<b>Public/shared flush/toilet</b> to piped sewer system to septic tank to pit to unknown place/ not sure/DK to elsewhere					<b>Public/shared flush/toilet</b> to piped sewer system to septic tank to pit to unknown place/ not sure/DK to elsewhere											
	<b>Latrines</b>					<b>Latrines</b>	22.8	65.8	33.7								
	<b>Pour flush latrines</b> to piped sewer system to septic tank to pit to unknown place/ not sure/DK to elsewhere				Letrina sanitaria	<b>Pour flush latrines</b> to piped sewer system to septic tank to pit to unknown place/ not sure/DK to elsewhere	15.3	31.9	19.5								
	<b>Private pour flush latrine</b> to piped sewer system to septic tank to pit to unknown place/ not sure/DK to elsewhere					<b>Private pour flush latrine</b> to piped sewer system to septic tank to pit to unknown place/ not sure/DK to elsewhere											
	<b>Public/shared pour flush latrine</b> to piped sewer system to septic tank to pit to unknown place/ not sure/DK to elsewhere					<b>Public/shared pour flush latrine</b> to piped sewer system to septic tank to pit to unknown place/ not sure/DK to elsewhere											
	<b>Dry latrines</b>					<b>Dry latrines</b>	7.5	33.9	14.2								
	<b>Improved latrines</b> Ventilated Improved Pit latrine Pit latrine with slab/covered latrine Traditional latrine Pit latrine without slab/open pit Hanging toilet/hanging latrine Bucket latrine				Excusado o pozo negro	<b>Improved latrines</b> Ventilated Improved Pit latrine Pit latrine with slab/covered latrine Traditional latrine Pit latrine without slab/open pit Hanging toilet/hanging latrine Bucket latrine Other	7.5	33.9	14.2								
	<b>Private Latrines</b> Ventilated Improved Pit latrine Pit latrine with slab/covered latrine Traditional latrine Pit latrine without slab/open pit Hanging toilet/hanging latrine Bucket latrine					<b>Private Latrines</b> Ventilated Improved Pit latrine Pit latrine with slab/covered latrine Traditional latrine Pit latrine without slab/open pit Hanging toilet/hanging latrine Bucket latrine Other											
	<b>Public/shared Latrines</b> Ventilated Improved Pit latrine Pit latrine with slab/covered latrine Traditional latrine Pit latrine without slab/open pit Hanging toilet/hanging latrine Bucket latrine					<b>Public/shared Latrines</b> Ventilated Improved Pit latrine Pit latrine with slab/covered latrine Traditional latrine Pit latrine without slab/open pit Hanging toilet/hanging latrine Bucket latrine Other											
	<b>Composting toilets</b> Composting toilet (private) Composting toilet (shared)					<b>Composting toilets</b> Composting toilet (private) Composting toilet (shared)											
Population without household connections but served	<b>Other improved</b> Other	47.9	65.7			<b>Other improved</b> Other											
	<b>No facility, bush, field</b>				Sin medio/ matorrales/ campo de cultivo	<b>No facility, bush, field</b>	0.9	4.9	1.9								
Total population unserved	<b>Other unimproved</b> Other DK/missing information	4.2	8.8			<b>Other unimproved</b> Other DK/missing information											
	<b>Total</b>	100.0	100.0			<b>Total</b>	100.0	100.0	99.9								
<b>Calculations</b>						<b>Calculations</b>											
<b>Estimations</b>						<b>Estimations</b>	Traditional latrine considered improved based on MICS06	4.9	22.1								
<b>Access to improved plus shared sanitation:</b>		<b>96%</b>	<b>91%</b>		<b>Access to improved sanitation:</b>		<b>96%</b>	<b>83%</b>	<b>84%</b>								
<b>Access to sewerage connections:</b>		<b>48%</b>	<b>25%</b>		<b>Access to sewerage connections:</b>												
Used for the estimates		No	No		Used for the estimates		Yes	Yes									
Used for the estimates		Yes	Yes		Used for the estimates		Yes	Yes									
<b>Ratios</b>	Shared improved facilities/all improved facilities				<b>Ratios</b>	Shared improved facilities/all improved facilities											
	Improved latrine / All latrines					Improved latrine / All latrines	67%	48%	58%								
	Covered dry latrines / All dry latrines					Covered dry latrines / All dry latrines											
	VIP / All latrines					VIP / All latrines											
	Traditional latrines / All latrines					Traditional latrines / All latrines	33%	52%	42%								
Improved + traditional latrines / All latrines				Improved + traditional latrines / All latrines	100%	100%	100%										
					Sewerage connection among flush/pour flush												
					Sewerage connection among flush												
Number of people covered by the survey:					Number of people covered by the survey:												
Number of households covered by the survey:					Number of households covered by the survey:												
Total population:		8482	3199.2		Total population:												
<b>Comments</b>	JMP99: data updated with PAHO values				<b>Comments</b>												

Use of sanitation facilities		WHO01			Cuba			Use of sanitation facilities		INRH07			Cuba		
Revision of world health statistics					Instituto Nacional de Recurso Hidraulicos										
World health report, WHO 2003					2001					2007					
Original denomination	Classification				Urban	Rural	Total	Original denomination	Classification				Urban	Rural	Total
	<b>Flush and pour flush</b>								<b>Flush and pour flush</b>				98.1	89.8	0.0
		to piped sewer system					Alcantarillado			to piped sewer system			47.6	4.8	
		to septic tank								to septic tank					
		to pit					Fosas y letrinas			to pit			50.5	85.0	
		to unknown place/ not sure/DK								to unknown place/ not sure/DK					
		to elsewhere								to elsewhere					
	<b>Flush/toilets</b>								<b>Flush/toilets</b>						
		to piped sewer system								to piped sewer system					
		to septic tank								to septic tank					
		to pit								to pit					
		to unknown place/ not sure/DK								to unknown place/ not sure/DK					
		to elsewhere								to elsewhere					
	<b>Private flush/toilet</b>								<b>Private flush/toilet</b>						
		to piped sewer system								to piped sewer system					
		to septic tank								to septic tank					
		to pit								to pit					
		to unknown place/ not sure/DK								to unknown place/ not sure/DK					
		to elsewhere								to elsewhere					
	<b>Public/shared flush/toilet</b>								<b>Public/shared flush/toilet</b>						
		to piped sewer system								to piped sewer system					
		to septic tank								to septic tank					
		to pit								to pit					
		to unknown place/ not sure/DK								to unknown place/ not sure/DK					
		to elsewhere								to elsewhere					
	<b>Latrines</b>								<b>Latrines</b>						
	<b>Pour flush latrines</b>								<b>Pour flush latrines</b>						
		to piped sewer system								to piped sewer system					
		to septic tank								to septic tank					
		to pit								to pit					
		to unknown place/ not sure/DK								to unknown place/ not sure/DK					
		to elsewhere								to elsewhere					
	<b>Private pour flush latrine</b>								<b>Private pour flush latrine</b>						
		to piped sewer system								to piped sewer system					
		to septic tank								to septic tank					
		to pit								to pit					
		to unknown place/ not sure/DK								to unknown place/ not sure/DK					
		to elsewhere								to elsewhere					
	<b>Public/shared pour flush latrine</b>								<b>Public/shared pour flush latrine</b>						
		to piped sewer system								to piped sewer system					
		to septic tank								to septic tank					
		to pit								to pit					
		to unknown place/ not sure/DK								to unknown place/ not sure/DK					
		to elsewhere								to elsewhere					
	<b>Dry latrines</b>								<b>Dry latrines</b>						
	<b>Improved latrines</b>								<b>Improved latrines</b>						
		Ventilated Improved Pit latrine								Ventilated Improved Pit latrine					
		Pit latrine with slab/covered latrine								Pit latrine with slab/covered latrine					
		Traditional latrine								Traditional latrine					
		Pit latrine without slab/open pit								Pit latrine without slab/open pit					
		Hanging toilet/hanging latrine								Hanging toilet/hanging latrine					
		Bucket latrine								Bucket latrine					
		Other								Other					
	<b>Private Latrines</b>								<b>Private Latrines</b>						
		Ventilated Improved Pit latrine								Ventilated Improved Pit latrine					
		Pit latrine with slab/covered latrine								Pit latrine with slab/covered latrine					
		Traditional latrine								Traditional latrine					
		Pit latrine without slab/open pit								Pit latrine without slab/open pit					
		Hanging toilet/hanging latrine								Hanging toilet/hanging latrine					
		Bucket latrine								Bucket latrine					
		Other								Other					
	<b>Public/shared Latrines</b>								<b>Public/shared Latrines</b>						
		Ventilated Improved Pit latrine								Ventilated Improved Pit latrine					
		Pit latrine with slab/covered latrine								Pit latrine with slab/covered latrine					
		Traditional latrine								Traditional latrine					
		Pit latrine without slab/open pit								Pit latrine without slab/open pit					
		Hanging toilet/hanging latrine								Hanging toilet/hanging latrine					
		Bucket latrine								Bucket latrine					
		Other								Other					
	<b>Composting toilets</b>								<b>Composting toilets</b>						
		Composting toilet (private)								Composting toilet (private)					
		Composting toilet (shared)								Composting toilet (shared)					
Population without household connections but served	<b>Other improved</b>								<b>Other improved</b>						
		Other								Other					
		Other								Other					
Total population unserved	<b>No facility, bush, field</b>								<b>No facility, bush, field</b>						
	<b>Other unimproved</b>								<b>Other unimproved</b>						
		Other								Other					
		Other								Other					
		DK/missing information								DK/missing information					
	<b>Total</b>								<b>Total</b>				98.1	89.8	0.0
<b>Calculations</b>									<b>Calculations</b>						
<b>Estimations</b>									<b>Estimations</b>						
<b>Access to improved plus shared sanitation:</b>								<b>Access to improved sanitation :</b>					98%	90%	0%
<b>Access to sewerage connections :</b>								<b>Access to sewerage connections :</b>					48%	5%	
Used for the estimates					No	No		Used for the estimates					No	No	
Used for the estimates					No	No		Used for the estimates					No	No	
<b>Ratios</b>	Shared improved facilities/all improved facilities							Shared improved facilities/all improved facilities							
	Improved latrine / All latrines							Improved latrine / All latrines							
	Covered dry latrines / All dry latrines							Covered dry latrines / All dry latrines							
	VIP / All latrines							VIP / All latrines							
	Traditional latrines / All latrines							Traditional latrines / All latrines							
	Improved + traditional latrines / All latrines							Improved + traditional latrines / All latrines							
Sewerage connection among flush/pour flush							Sewerage connection among flush/pour flush				48.5	5.3			
Sewerage connection among flush							Sewerage connection among flush								
Number of people covered by the survey								Number of people covered by the survey							
Number of households covered by the survey								Number of households covered by the survey							
Total population								Total population							
<b>Comments</b>								<b>Comments</b>							



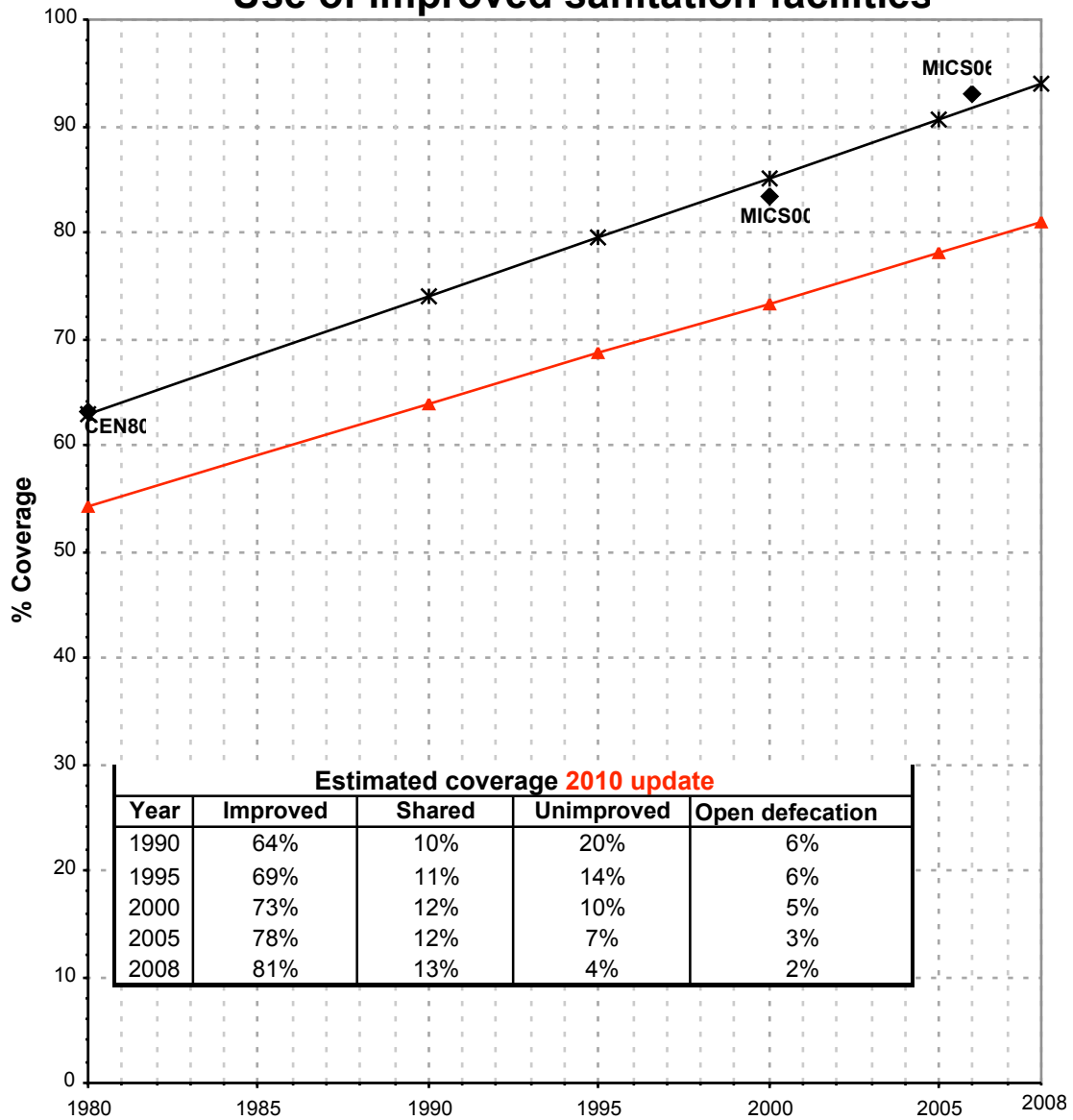
Cuba			SANITATION															
			URBAN								RURAL							
			Sewer connection		Total		Open defecation		Shared		Sewer connection		Total		Open defecation		Shared	
Source	Code	Year	Used	Not used	Used	Not used	Used	Not used	Used	Not used	Used	Not used	Used	Not used	Used	Not used	Used	Not used
National Census	CEN80	1980		29.0	85.9							1.0	63.2					
The International Drinking Water Supply and Sanitation Decade	WHO90	1990	39.0			100.0								68.0				
Global Water Supply and Sanitation Assessment 2000.	JMP99	1998	47.9			95.8					25.4			91.2				
Demographic and Health Survey	MICS00	2000			96.5		0.9						83.3		4.9			
Revision of world health statistics	WHO01	2001																
Instituto Nacional de Recurso Hidraulicos	INRH07	2007		47.6		98.1						4.8		89.8				
Multiple Indicator Cluster Survey	MICS06	2006	52.8		97.2		0.5		5.5		13.1		93.1		2.9		13.8	

# Cuba - urban - Use of improved sanitation facilities



■ Used for the estimates    \* Estimates    ▲ JMP 2010 estimate

## Cuba - rural - Use of improved sanitation facilities



Used for the estimates    
  \* Estimates    
  JMP 2010 estimate

# Sanitation

Cuba	Sanitation coverage estimates					
	Urban (%)		Rural (%)		Total (%)	
	1990	2008	1990	2008	1990	2008
Improved facilities	86	94	64	81	80	91
Shared facilities	5	5	10	13	6	7
Unimproved facilities	8	1	20	4	12	2
Open defecation	1	0	6	2	2	0

Source: WHO/UNICEF JMP, 2010

Cuba	Urban		Rural		Total	
	1990	2008	1990	2008	1990	2008
Population (x1000)	7,767	8,475	2,820	2,729	10,587	11,205

Source: UN / Population Division, 2008

