

WHO / UNICEF

Joint Monitoring Programme
for Water Supply and Sanitation

Estimates for the use of

**Improved Drinking-Water Sources
and Improved Sanitation Facilities**

Updated March 2010

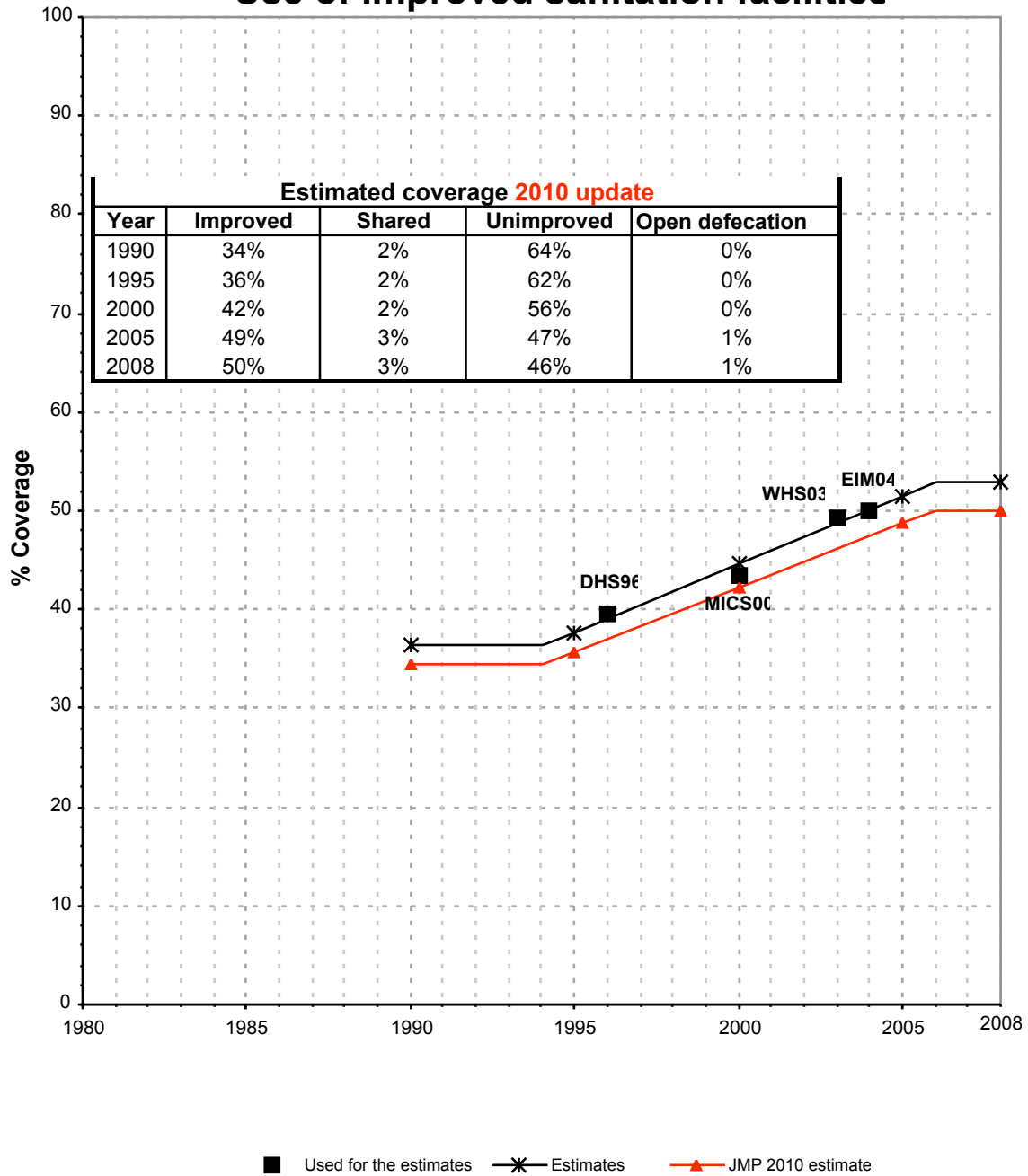
childinfo.org

Use of sanitation facilities		CEN91			Comoros			Use of sanitation facilities		DHS96			Comoros		
Census					1991			Demographic and Health Survey					1996		
as recorded in Form 4 of the Global Water Supply and Sanitation Assessment 2000. Water Supply and Sanitation Sector Questionnaire - 1999.															
Original denomination	Classification	Urban	Rural	Total	Original denomination	Classification	Urban	Rural	Total						
	Flush and pour flush	90.9	1.6			Flush and pour flush	7.5	1.6							
	to piped sewer system					to piped sewer system									
	to septic tank					to septic tank									
	to pit					to pit									
	to unknown place/ not sure/DK					to unknown place/ not sure/DK									
	to elsewhere					to elsewhere									
WC with Flush	Flush/toilets	90.9	1.6		WC	Flush/toilets	7.5	1.6							
	to piped sewer system					to piped sewer system									
	to septic tank					to septic tank									
	to pit					to pit									
	to unknown place/ not sure/DK					to unknown place/ not sure/DK									
	to elsewhere					to elsewhere									
	Private flush/toilet					Private flush/toilet									
	to piped sewer system					to piped sewer system									
	to septic tank					to septic tank									
	to pit					to pit									
	to unknown place/ not sure/DK					to unknown place/ not sure/DK									
	to elsewhere					to elsewhere									
	Public/shared flush/toilet					Public/shared flush/toilet									
	to piped sewer system					to piped sewer system									
	to septic tank					to septic tank									
	to pit					to pit									
	to unknown place/ not sure/DK					to unknown place/ not sure/DK									
	to elsewhere					to elsewhere									
Latrine	Latrines	7.5	96.2			Latrines	91.0	97.0							
	Pour flush latrines					Pour flush latrines									
	to piped sewer system					to piped sewer system									
	to septic tank					to septic tank									
	to pit					to pit									
	to unknown place/ not sure/DK					to unknown place/ not sure/DK									
	to elsewhere					to elsewhere									
	Private pour flush latrine					Private pour flush latrine									
	to piped sewer system					to piped sewer system									
	to septic tank					to septic tank									
	to pit					to pit									
	to unknown place/ not sure/DK					to unknown place/ not sure/DK									
	to elsewhere					to elsewhere									
	Public/shared pour flush latrine					Public/shared pour flush latrine									
	to piped sewer system					to piped sewer system									
	to septic tank					to septic tank									
	to pit					to pit									
	to unknown place/ not sure/DK					to unknown place/ not sure/DK									
	to elsewhere					to elsewhere									
	Dry latrines					Dry latrines	91.0	97.0							
	Improved latrines					Improved latrines	32.1	14.3							
	Ventilated Improved Pit latrine					Ventilated Improved Pit latrine									
	Pit latrine with slab/covered latrine				Improved Pit/Latrine	Pit latrine with slab/covered latrine	32.1	14.3							
	Traditional latrine					Traditional latrine									
	Pit latrine without slab/open pit				Simple Pit/Latrine	Pit latrine without slab/open pit	58.9	82.7							
	Hanging toilet/hanging latrine					Hanging toilet/hanging latrine									
	Bucket latrine					Bucket latrine									
	Other					Other									
	Private Latrines					Private Latrines									
	Ventilated Improved Pit latrine					Ventilated Improved Pit latrine									
	Pit latrine with slab/covered latrine					Pit latrine with slab/covered latrine									
	Traditional latrine					Traditional latrine									
	Pit latrine without slab/open pit					Pit latrine without slab/open pit									
	Hanging toilet/hanging latrine					Hanging toilet/hanging latrine									
	Bucket latrine					Bucket latrine									
	Other					Other									
	Public/shared Latrines					Public/shared Latrines									
	Ventilated Improved Pit latrine					Ventilated Improved Pit latrine									
	Pit latrine with slab/covered latrine					Pit latrine with slab/covered latrine									
	Traditional latrine					Traditional latrine									
	Pit latrine without slab/open pit					Pit latrine without slab/open pit									
	Hanging toilet/hanging latrine					Hanging toilet/hanging latrine									
	Bucket latrine					Bucket latrine									
	Other					Other									
	Composting toilets					Composting toilets									
	Composting toilet (private)					Composting toilet (private)									
	Composting toilet (shared)					Composting toilet (shared)									
	Other improved					Other improved									
	Other					Other									
	Other					Other									
No Facilities	No facility, bush, field	1.6	2.2		No Facilities	No facility, bush, field	0.2	0.5							
	Other unimproved					Other unimproved									
	Other					Other									
	Other					Other									
	DK/missing information				Not Defined	DK/missing information	1.2	0.9							
	Total	100.0	100.0			Total	99.9	100.0							
Calculations					Calculations										
	latrine considered improved based on ratio DHS96	2.6	14.2												
Estimations					Estimations										
	SC, based on WHS03	3.2	0.2			SC, based on WHS03	0.3	0.2							
Access to improved sanitation :		94%	16%		Access to improved sanitation :		40%	16%							
Access to sewerage connections :		3%	0%		Access to sewerage connections :		0%	0%							
Used for the estimates		No	Yes		Used for the estimates		Yes	Yes							
Used for the estimates		No	No		Used for the estimates		Yes	Yes							
Ratios	Shared improved facilities/all improved facilities				Ratios	Shared improved facilities/all improved facilities									
	Improved latrine / All latrines					Improved latrine / All latrines	35%	15%							
	Covered dry latrines / All dry latrines					Covered dry latrines / All dry latrines	35%	15%							
	VIP / All latrines					VIP / All latrines									
	Traditional latrines / All latrines					Traditional latrines / All latrines									
	Improved + traditional latrines / All latrines					Improved + traditional latrines / All latrines									
Sewerage connection among flush/pour flush				Sewerage connection among flush/pour flush											
Sewerage connection among flush				Sewerage connection among flush											
Number of people covered by the survey:					Number of people covered by the survey:										
Number of households covered by the survey:					Number of households covered by the survey:										
Total population:		130.5	322.7		Total population:										
Comments					Comments										

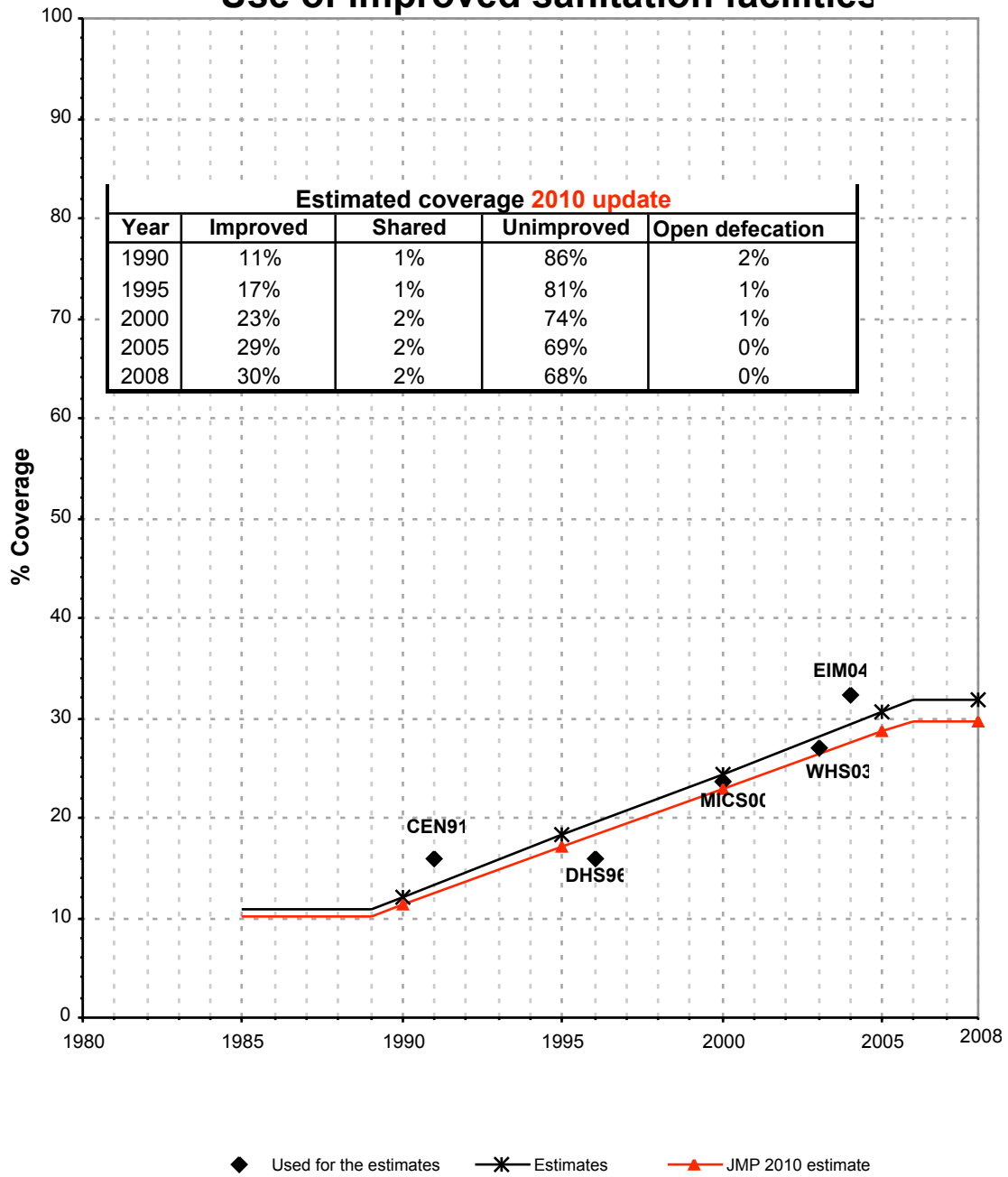
Use of sanitation facilities		JMP99			Comoros			Use of sanitation facilities		MICS00			Comoros						
Global Water Supply and Sanitation Assessment 2000.					Multiple Indicator Cluster Survey														
Water Supply and Sanitation Sector Questionnaire - 1999. Form 6 sent to WHO.					1999					Enquete Indicateurs Multiples					2000				
Original denomination	Classification	Urban	Rural	Total	Original denomination	Classification	Urban	Rural	Total	Urban	Rural	Total	Urban	Rural	Total				
Population served with household connections to conventional	Flush and pour flush to piped sewer system to septic tank to pit to unknown place/ not sure/DK to elsewhere	0.0	0.0			Flush and pour flush to piped sewer system to septic tank to pit to unknown place/ not sure/DK to elsewhere	8.6	0.9											
	Flush/toilets to piped sewer system to septic tank to pit to unknown place/ not sure/DK to elsewhere				Chasse d'eau avec égout ou fosse septique	Flush/toilets to piped sewer system to septic tank to pit to unknown place/ not sure/DK to elsewhere	4.8	0.5											
	Private flush/toilet to piped sewer system to septic tank to pit to unknown place/ not sure/DK to elsewhere					Private flush/toilet to piped sewer system to septic tank to pit to unknown place/ not sure/DK to elsewhere													
	Public/shared flush/toilet to piped sewer system to septic tank to pit to unknown place/ not sure/DK to elsewhere					Public/shared flush/toilet to piped sewer system to septic tank to pit to unknown place/ not sure/DK to elsewhere													
	Latrines					Latrines	82.2	95.9											
	Pour flush latrines to piped sewer system to septic tank to pit to unknown place/ not sure/DK to elsewhere				Latrine à évacuation	Pour flush latrines to piped sewer system to septic tank to pit to unknown place/ not sure/DK to elsewhere	3.8	0.4											
	Private pour flush latrine to piped sewer system to septic tank to pit to unknown place/ not sure/DK to elsewhere					Private pour flush latrine to piped sewer system to septic tank to pit to unknown place/ not sure/DK to elsewhere													
	Public/shared pour flush latrine to piped sewer system to septic tank to pit to unknown place/ not sure/DK to elsewhere					Public/shared pour flush latrine to piped sewer system to septic tank to pit to unknown place/ not sure/DK to elsewhere													
	Dry latrines					Dry latrines	88.4	95.5											
	Improved latrines Ventilated Improved Pit latrine Pit latrine with slab/covered latrine Traditional latrine Pit latrine without slab/open pit Hanging toilet/hanging latrine Bucket latrine				Latrine améliorée à ventilation Latrine traditionnelle Trou ouvert Sceau	Improved latrines Ventilated Improved Pit latrine Pit latrine with slab/covered latrine Traditional latrine Pit latrine without slab/open pit Hanging toilet/hanging latrine Bucket latrine Other	1.7	2.2											
	Private Latrines Ventilated Improved Pit latrine Pit latrine with slab/covered latrine Traditional latrine Pit latrine without slab/open pit Hanging toilet/hanging latrine Bucket latrine					Private Latrines Ventilated Improved Pit latrine Pit latrine with slab/covered latrine Traditional latrine Pit latrine without slab/open pit Hanging toilet/hanging latrine Bucket latrine Other													
	Public/shared Latrines Ventilated Improved Pit latrine Pit latrine with slab/covered latrine Traditional latrine Pit latrine without slab/open pit Hanging toilet/hanging latrine Bucket latrine					Public/shared Latrines Ventilated Improved Pit latrine Pit latrine with slab/covered latrine Traditional latrine Pit latrine without slab/open pit Hanging toilet/hanging latrine Bucket latrine Other													
	Composting toilets Composting toilet (private) Composting toilet (shared)					Composting toilets Composting toilet (private) Composting toilet (shared)													
Population without household connections but served	Other improved Other	98.4	97.8			Other improved Other													
	No facility, bush, field				Pas de toilette/brousse/champ	No facility, bush, field	0.5	0.7											
Total population unserved	Other unimproved Other DK/missing information	1.6	2.2		Autre	Other unimproved Other DK/missing information	2.6	2.8											
	Total	100.0	100.0			Total	100.1	99.9											
Calculations						Calculations													
Estimations						Estimations													
						Latrine traditionnelle considérée améliorée basée sur WHS03	33.2	20.4											
						SC, based on WHS03	0.3	0.1											
Access to improved plus shared sanitation:		98%	98%		Access to improved sanitation :		43%	24%											
Access to sewerage connections :		0%	0%		Access to sewerage connections :		0%	0%											
Used for the estimates		No	No		Used for the estimates		Yes	Yes											
Used for the estimates		No	No		Used for the estimates		Yes	Yes											
Ratios	Shared improved facilities/all improved facilities					Shared improved facilities/all improved facilities													
	Improved latrine / All latrines					Improved latrine / All latrines	6%	3%											
	Covered dry latrines / All dry latrines					Covered dry latrines / All dry latrines	2%	2%											
	VIP / All latrines					VIP / All latrines	87%	83%											
	Traditional latrines / All latrines					Traditional latrines / All latrines	93%	86%											
Improved + traditional latrines / All latrines					Improved + traditional latrines / All latrines														
	Number of people covered by the survey:					Number of people covered by the survey:													
	Number of households covered by the survey:					Number of households covered by the survey:													
	Total population:	180.9	357.6			Total population:													
Comments					Comments														

Comoros			SANITATION															
			URBAN								RURAL							
			Sewer connection		Total		Open defecation		Shared		Sewer connection		Total		Open defecation		Shared	
Source	Code	Year	Used	Not used	Used	Not used	Used	Not used	Used	Not used	Used	Not used	Used	Not used	Used	Not used	Used	Not used
Census	CEN91	1991		3.2		93.5		1.6				0.2	15.8		2.2			
Demographic and Household Survey	DHS96	1996	0.3		39.6		0.2				0.2		15.9		0.5			
Global Water Supply and Sanitation Assessment 2000.	JMP99	1999		0.0		98.4						0.0		97.8				
Multiple Indicator Cluster Survey	MICS00	2000	0.3		43.5		0.5				0.1		23.5		0.7			
World Health Survey	WHS03	2003	0.5		49.3		0.0		5.4		0.3		27.0		0.0		6.3	
Enquête intégrale auprès des ménages	EIM04	2004			50.1		1.4						32.2		1.4			

Comoros - urban - Use of improved sanitation facilities



Comoros - rural - Use of improved sanitation facilities



Sanitation

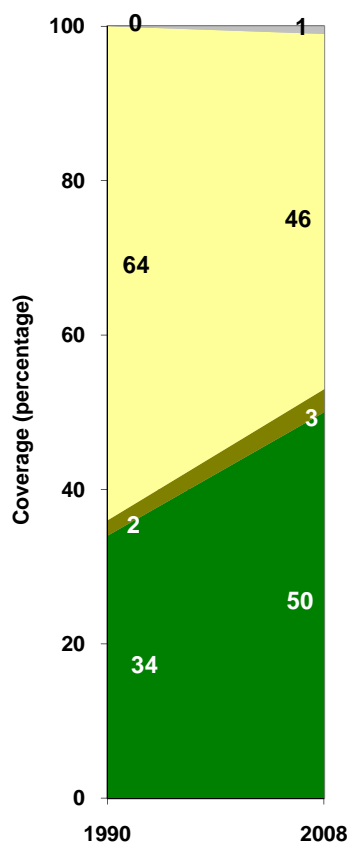
Comoros	Sanitation coverage estimates					
	Urban (%)		Rural (%)		Total (%)	
	1990	2008	1990	2008	1990	2008
Improved facilities	34	50	11	30	17	36
Shared facilities	2	3	1	2	1	2
Unimproved facilities	64	46	86	68	81	62
Open defecation	0	1	2	0	1	0

Source: WHO/UNICEF JMP, 2010

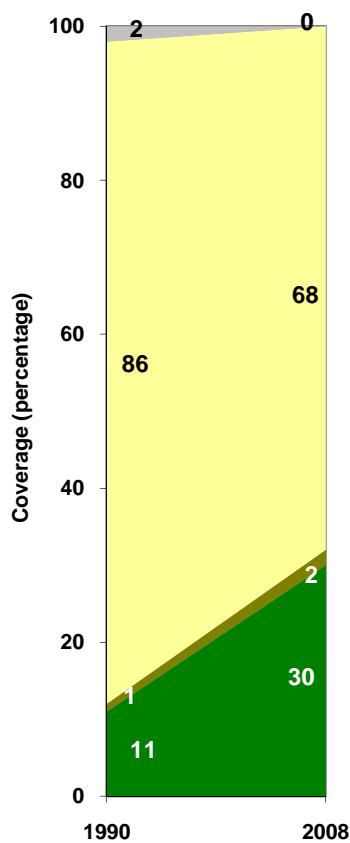
Comoros	Urban		Rural		Total	
	1990	2008	1990	2008	1990	2008
Population (x1000)	122	185	316	476	438	661

Source: UN / Population Division, 2008

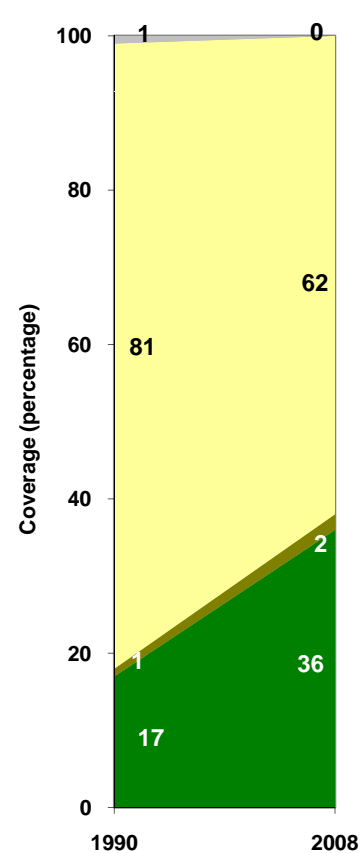
Urban sanitation trends



Rural sanitation trends



Total sanitation trends



■ Improved facilities
■ Shared facilities
■ Unimproved facilities
■ Open defecation

■ Improved facilities
■ Shared facilities
■ Unimproved facilities
■ Open defecation

■ Improved facilities
■ Shared facilities
■ Unimproved facilities
■ Open defecation