

WHO / UNICEF

Joint Monitoring Programme
for Water Supply and Sanitation

Estimates for the use of

**Improved Drinking-Water Sources
and Improved Sanitation Facilities**

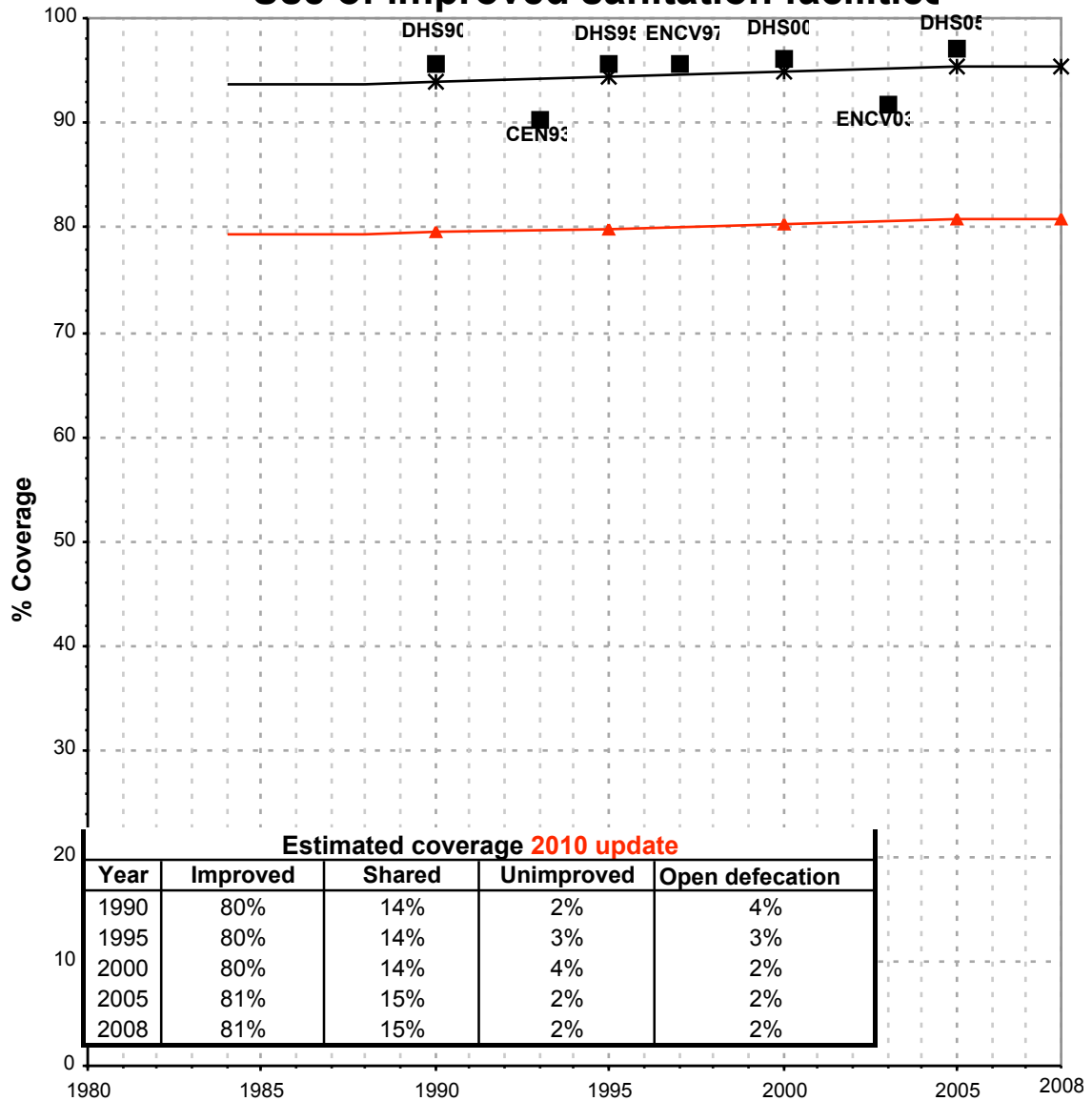
Updated March 2010

childinfo.org

Use of sanitation facilities		JMP99			Colombia			Use of sanitation facilities		DHS00			Colombia						
Global Water Supply and Sanitation Assessment 2000.					Demographic and Health Survey														
Water Supply and Sanitation Sector Questionnaire - 1999. Form 6 sent to WHO.					1998					Salud sexual y reproductiva en Colombia, Encuesta Nacional de Demografía y Salud					2000				
Original denomination	Classification	Urban	Rural	Total	Original denomination	Classification	Urban	Rural	Total										
Population served with household connections to conventional	Flush and pour flush	65.9	20.0		Flush and pour flush		96.2	58.2											
	to piped sewer system	65.9	20.0		to piped sewer system		90.7	14.3											
	to septic tank				to septic tank		4.2	32.6											
	to pit				to pit														
	to unknown place/ not sure/DK				to unknown place/ not sure/DK														
	to elsewhere				to elsewhere		1.3	11.3											
	Flush/toilets				Flush/toilets		96.2	58.2											
	to piped sewer system				to piped sewer system	Inodoro a alcantarillado	90.7	14.3											
	to septic tank				to septic tank	Inodoro a pozo septico	4.2	32.6											
	to pit				to pit														
	to unknown place/ not sure/DK				to unknown place/ not sure/DK														
	to elsewhere				to elsewhere	Inodoro a quebrada, campo abierto	1.3	11.3											
	Private flush/toilet				Private flush/toilet														
	to piped sewer system				to piped sewer system														
	to septic tank				to septic tank														
	to pit				to pit														
	to unknown place/ not sure/DK				to unknown place/ not sure/DK														
	to elsewhere				to elsewhere														
	Public/shared flush/toilet				Public/shared flush/toilet														
	to piped sewer system				to piped sewer system														
	to septic tank				to septic tank														
	to pit				to pit														
	to unknown place/ not sure/DK				to unknown place/ not sure/DK														
	to elsewhere				to elsewhere														
	Latrines				Latrines		2.4	13.0											
	Pour flush latrines				Pour flush latrines														
	to piped sewer system				to piped sewer system														
	to septic tank				to septic tank														
	to pit				to pit														
	to unknown place/ not sure/DK				to unknown place/ not sure/DK														
	to elsewhere				to elsewhere														
	Private pour flush latrine				Private pour flush latrine														
	to piped sewer system				to piped sewer system														
	to septic tank				to septic tank														
	to pit				to pit														
	to unknown place/ not sure/DK				to unknown place/ not sure/DK														
	to elsewhere				to elsewhere														
	Public/shared pour flush latrine				Public/shared pour flush latrine														
	to piped sewer system				to piped sewer system														
	to septic tank				to septic tank														
	to pit				to pit														
	to unknown place/ not sure/DK				to unknown place/ not sure/DK														
	to elsewhere				to elsewhere														
	Dry latrines				Dry latrines		2.4	13.0											
	Improved latrines				Improved latrines														
	Ventilated Improved Pit latrine				Ventilated Improved Pit latrine														
	Pit latrine with slab/covered latrine				Pit latrine with slab/covered latrine		2.4	13.0											
	Traditional latrine				Traditional latrine	Letrina (pozo negro, hoyo)													
	Pit latrine without slab/open pit				Pit latrine without slab/open pit														
	Hanging toilet/hanging latrine				Hanging toilet/hanging latrine														
	Bucket latrine				Bucket latrine														
	Private Latrines				Private Latrines														
	Ventilated Improved Pit latrine				Ventilated Improved Pit latrine														
	Pit latrine with slab/covered latrine				Pit latrine with slab/covered latrine														
	Traditional latrine				Traditional latrine														
	Pit latrine without slab/open pit				Pit latrine without slab/open pit														
	Hanging toilet/hanging latrine				Hanging toilet/hanging latrine														
	Bucket latrine				Bucket latrine														
	Public/shared Latrines				Public/shared Latrines														
	Ventilated Improved Pit latrine				Ventilated Improved Pit latrine														
	Pit latrine with slab/covered latrine				Pit latrine with slab/covered latrine														
	Traditional latrine				Traditional latrine														
	Pit latrine without slab/open pit				Pit latrine without slab/open pit														
	Hanging toilet/hanging latrine				Hanging toilet/hanging latrine														
	Bucket latrine				Bucket latrine														
	Composting toilets				Composting toilets														
	Composting toilet (private)				Composting toilet (private)														
	Composting toilet (shared)				Composting toilet (shared)														
Population without household connections but served	Other improved				Other improved														
	Other				Other														
	No facility, bush, field				No facility, bush, field	No tiene servicio sanitario	1.4	28.7											
Total population unserved	Other unimproved	34.1	80.0		Other unimproved														
	Other				Other														
	DK/missing information				DK/missing information														
	Total	100.0	100.0		Total		100.0	99.9											
Calculations					Calculations														
Estimations					Estimations	50% of traditional latrines considered improved	1.2	6.5											
Access to improved plus shared sanitation:		66%	20%		Access to improved sanitation:		96%	53%											
Access to sewerage connections:		66%	20%		Access to sewerage connections:		91%	14%											
Used for the estimates		No	No		Used for the estimates		Yes	Yes											
Ratios	Shared improved facilities/all improved facilities				Shared improved facilities/all improved facilities		17.3%	9.4%											
	Improved latrine / All latrines				Improved latrine / All latrines														
	Covered dry latrines / All dry latrines				Covered dry latrines / All dry latrines														
	VIP / All latrines				VIP / All latrines														
	Traditional latrines / All latrines				Traditional latrines / All latrines		100%	100%											
	Improved + traditional latrines / All latrines				Improved + traditional latrines / All latrines														
Number of people covered by the survey:					Number of people covered by the survey:														
Number of households covered by the survey:					Number of households covered by the survey:														
Total population:		28062	11953		Total population:														
Comments					Comments														

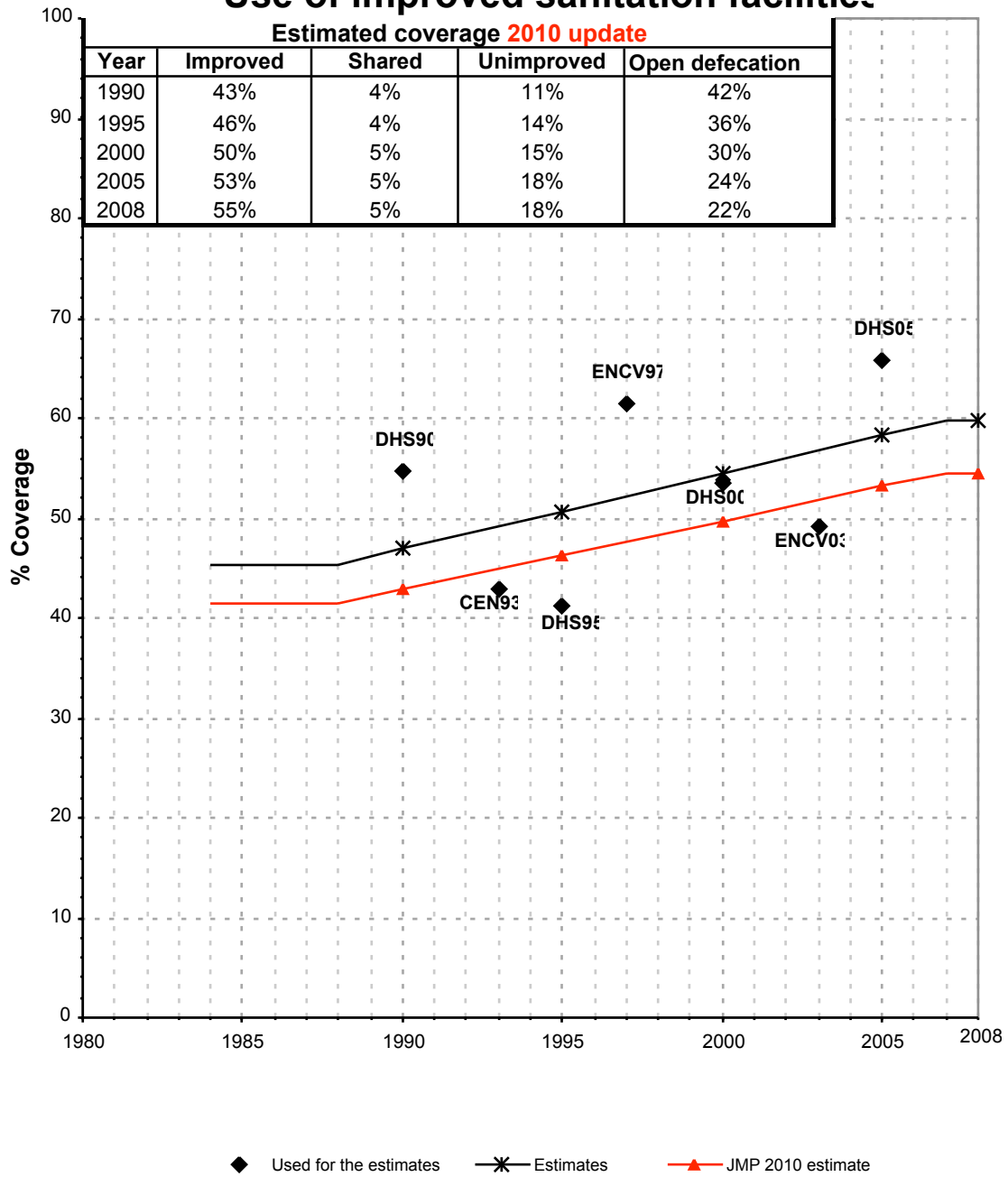
Colombia			SANITATION															
			URBAN								RURAL							
			Sewer connection		Total		Open defecation		Shared		Sewer connection		Total		Open defecation		Shared	
Source	Code	Year	Used	Not used	Used	Not used	Used	Not used	Used	Not used	Used	Not used	Used	Not used	Used	Not used	Used	Not used
Demographic and Health Survey	DHS90	1990	89.3		95.6		2.8				16.9		54.8		36.2			
National Census	CEN93	1993	78.6		90.3		5.3		15.1		12.2		42.8		46.8		6.4	
Demographic and Health Survey	DHS95	1995	90.0		95.6		2.5				13.3		41.3		41.4			
Desigualdades en el acceso, uso y gasto con el agua potable en América Latina y el Caribe	ENCV97	1997	87.6		95.5		1.7				30.1		61.4		23.1			
Global Water Supply and Sanitation Assessment 2000.	JMP99	1998		65.9		65.9						20.0		20.0				
Demographic and Health Survey	DHS00	2000	90.7		96.1		1.4		17.3		14.3		53.4		28.7		9.4	
Demographic and Health Survey	DHS05	2005	92.0		97.1		1.1		13.3		25.3		65.7		22.7		10.6	
Encuesta Nacional de Calidad de Vida - September	ENCV03	2003	83.0		91.9		3.8				5.8		49.2		30.9			

Colombia - urban - Use of improved sanitation facilities



■ Used for the estimates ✱ Estimates ▲ JMP 2010 estimate

Colombia - rural - Use of improved sanitation facilities



Sanitation

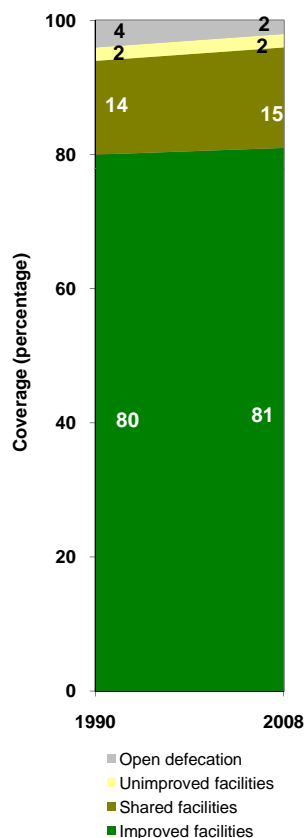
Colombia	Sanitation coverage estimates					
	Urban (%)		Rural (%)		Total (%)	
	1990	2008	1990	2008	1990	2008
Improved facilities	80	81	43	55	68	74
Shared facilities	14	15	4	5	11	12
Unimproved facilities	2	2	11	18	5	7
Open defecation	4	2	42	22	16	7

Source: WHO/UNICEF JMP, 2010

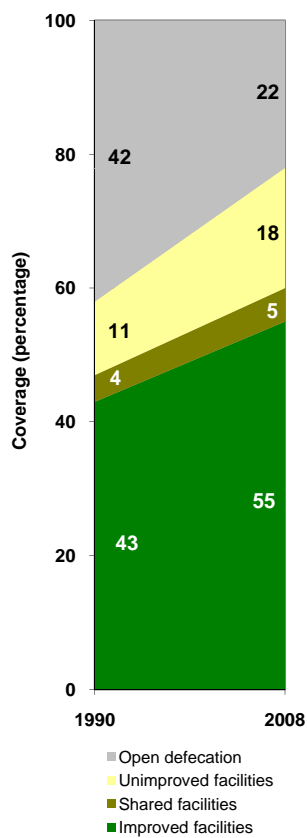
Colombia	Urban		Rural		Total	
	1990	2008	1990	2008	1990	2008
Population (x1000)	22,670	33,522	10,534	11,490	33,204	45,012

Source: UN / Population Division, 2008

Urban sanitation trends



Rural sanitation trends



Total sanitation trends

