

**WHO / UNICEF**

**Joint Monitoring Programme**  
for Water Supply and Sanitation

Estimates for the use of

**Improved Drinking-Water Sources  
and Improved Sanitation Facilities**

Updated March 2010

[childinfo.org](http://childinfo.org)

Use of sanitation facilities		CHS89			China			Use of sanitation facilities		CHS91			China		
Economic, Population, Nutrition, and Health Survey					1989			Economic, Population, Nutrition, and Health Survey					1991		
Original denomination	Classification	Urban	Rural	Total	Original denomination	Classification	Urban	Rural	Total						
	<b>Flush and pour flush</b>	32.3	4.5			<b>Flush and pour flush</b>	39.0	8.3							
	to piped sewer system					to piped sewer system									
	to septic tank					to septic tank									
	to pit					to pit									
	to unknown place/ not sure/DK					to unknown place/ not sure/DK									
	to elsewhere					to elsewhere									
	<b>Flush/toilets</b>	32.3	4.5			<b>Flush/toilets</b>	39.0	8.3							
	to piped sewer system					to piped sewer system									
	to septic tank					to septic tank									
	to pit					to pit									
	to unknown place/ not sure/DK					to unknown place/ not sure/DK									
	to elsewhere					to elsewhere									
Flush, in-house	<b>Private flush/toilet</b>	30.5	3.5		Flush, in-house	<b>Private flush/toilet</b>	31.2	4.2							
	to piped sewer system					to piped sewer system									
	to septic tank					to septic tank									
	to pit					to pit									
	to unknown place/ not sure/DK					to unknown place/ not sure/DK									
	to elsewhere					to elsewhere									
Flush, outside house	<b>Public/shared flush/toilet</b>	1.8	1.0		Flush, outside house	<b>Public/shared flush/toilet</b>	7.8	4.1							
	to piped sewer system					to piped sewer system									
	to septic tank					to septic tank									
	to pit					to pit									
	to unknown place/ not sure/DK					to unknown place/ not sure/DK									
	to elsewhere					to elsewhere									
	<b>Latrines</b>	59.8	87.3			<b>Latrines</b>	57.9	85.1							
	<b>Pour flush latrines</b>					<b>Pour flush latrines</b>									
	to piped sewer system					to piped sewer system									
	to septic tank					to septic tank									
	to pit					to pit									
	to unknown place/ not sure/DK					to unknown place/ not sure/DK									
	to elsewhere					to elsewhere									
	<b>Private pour flush latrine</b>					<b>Private pour flush latrine</b>									
	to piped sewer system					to piped sewer system									
	to septic tank					to septic tank									
	to pit					to pit									
	to unknown place/ not sure/DK					to unknown place/ not sure/DK									
	to elsewhere					to elsewhere									
	<b>Public/shared pour flush latrine</b>					<b>Public/shared pour flush latrine</b>									
	to piped sewer system					to piped sewer system									
	to septic tank					to septic tank									
	to pit					to pit									
	to unknown place/ not sure/DK					to unknown place/ not sure/DK									
	to elsewhere					to elsewhere									
	<b>Dry latrines</b>	59.8	87.3			<b>Dry latrines</b>	57.9	85.1							
	<b>Improved latrines</b>	17.9	25.8			<b>Improved latrines</b>	23.6	28.9							
	Ventilated Improved Pit latrine					Ventilated Improved Pit latrine									
Cement open pit	Pit latrine with slab/covered latrine	17.9	25.8		Cement open pit	Pit latrine with slab/covered latrine	23.6	28.9							
	Traditional latrine	27.4	19.4			Traditional latrine	22.4	23.3							
Earth open pit	Pit latrine without slab/open pit	14.5	42.1		Earth open pit	Pit latrine without slab/open pit	11.9	32.9							
	Hanging toilet/hanging latrine					Hanging toilet/hanging latrine									
	Bucket latrine					Bucket latrine									
	Other					Other									
	<b>Private Latrines</b>	7.4	5.3			<b>Private Latrines</b>	4.8	4.1							
	Ventilated Improved Pit latrine					Ventilated Improved Pit latrine									
	Pit latrine with slab/covered latrine					Pit latrine with slab/covered latrine									
No flush, in-house (latrine)	Traditional latrine	7.4	5.3		No flush, in-house (latrine)	Traditional latrine	4.8	4.1							
	Pit latrine without slab/open pit					Pit latrine without slab/open pit									
	Hanging toilet/hanging latrine					Hanging toilet/hanging latrine									
	Bucket latrine					Bucket latrine									
	Other					Other									
	<b>Public/shared Latrines</b>	20.0	14.1			<b>Public/shared Latrines</b>	17.6	19.2							
	Ventilated Improved Pit latrine					Ventilated Improved Pit latrine									
	Pit latrine with slab/covered latrine					Pit latrine with slab/covered latrine									
No flush, outside house (latrine)	Traditional latrine	20.0	14.1		No flush, outside house (latrine)	Traditional latrine	17.6	19.2							
	Pit latrine without slab/open pit					Pit latrine without slab/open pit									
	Hanging toilet/hanging latrine					Hanging toilet/hanging latrine									
	Bucket latrine					Bucket latrine									
	Other					Other									
	<b>Composting toilets</b>					<b>Composting toilets</b>									
	Composting toilet (private)					Composting toilet (private)									
	Composting toilet (shared)					Composting toilet (shared)									
	<b>Other improved</b>					<b>Other improved</b>									
	Other					Other									
	Other					Other									
none	<b>No facility, bush, field</b>	5.4	3.3		none	<b>No facility, bush, field</b>	2.1	0.9							
	<b>Other unimproved</b>	2.5	4.9			<b>Other unimproved</b>	1.0	5.7							
Other	Other	2.5	4.9		Other	Other	1.0	5.7							
	Other					Other									
	<b>DK/missing information</b>					<b>DK/missing information</b>									
	<b>Total</b>	100.0	100.0			<b>Total</b>	100.0	100.0							
<b>Calculations</b>					<b>Calculations</b>										
<b>Estimations</b>	50% of traditional latrines considered improved	13.7	9.7		<b>Estimations</b>	50% of traditional latrines considered improved	11.2	11.7							
	% Sewerage estimated based on WHS03	22.9	0.9			% Sewerage estimated based on WHS03	27.7	1.6							
	<b>Access to improved sanitation</b>	64%	40%			<b>Access to improved sanitation</b>	74%	49%							
	<b>Access to sewerage connections</b>	23%	1%			<b>Access to sewerage connections</b>	28%	2%							
	Used for the estimates	No	No			Used for the estimates	No	No							
	Used for the estimates	No	No			Used for the estimates	No	No							
	Shared improved facilities/all improved facilities					Shared improved facilities/all improved facilities									
<b>Ratios</b>	Improved latrine / All latrines	30%	30%		<b>Ratios</b>	Improved latrine / All latrines	41%	34%							
	Covered dry latrines / All dry latrines	30%	30%			Covered dry latrines / All dry latrines	41%	34%							
	VIP / All latrines					VIP / All latrines									
	Traditional latrines / All latrines	46%	22%			Traditional latrines / All latrines	39%	27%							
	Improved + traditional latrines / All latrines	76%	52%			Improved + traditional latrines / All latrines	79%	61%							
	Sewerage connection among flush/pour flush					Sewerage connection among flush/pour flush									
	Sewerage connection among flush					Sewerage connection among flush									
	Number of people covered by the survey					Number of people covered by the survey									
	Number of households covered by the survey					Number of households covered by the survey									
	Total population					Total population									
<b>Comments</b>	Not nationally representative				<b>Comments</b>	Not nationally representative									

Use of sanitation facilities		NMICS92			China			Use of sanitation facilities		CEN91			China		
National Child Survey (Multiple Indicator Cluster Survey)					1992			National census					1991		
National Bureau of Statistics					1992			10% micro dataset from IPUMS					1991		
Original denomination	Classification	Urban	Rural	Total	Original denomination	Classification	Urban	Rural	Total	Original denomination	Classification	Urban	Rural	Total	
	<b>Flush and pour flush</b>	58.1	1.5	17.3		<b>Flush and pour flush</b>	54.0	2.7			<b>Flush and pour flush</b>	54.0	2.7		
	to piped sewer system					to piped sewer system					to piped sewer system				
	to septic tank					to septic tank					to septic tank				
	to pit					to pit					to pit				
	to unknown place/ not sure/DK					to unknown place/ not sure/DK					to unknown place/ not sure/DK				
	to elsewhere					to elsewhere					to elsewhere				
Flush	<b>Flush/toilets</b>	58.1	1.5	17.3		<b>Flush/toilets</b>	54.0	2.7			<b>Flush/toilets</b>	54.0	2.7		
	to piped sewer system					to piped sewer system					to piped sewer system				
	to septic tank					to septic tank					to septic tank				
	to pit					to pit					to pit				
	to unknown place/ not sure/DK					to unknown place/ not sure/DK					to unknown place/ not sure/DK				
	to elsewhere					to elsewhere					to elsewhere				
	<b>Private flush/toilet</b>				Private flush	<b>Private flush/toilet</b>	42.3	2.2			<b>Private flush/toilet</b>	42.3	2.2		
	to piped sewer system					to piped sewer system					to piped sewer system				
	to septic tank					to septic tank					to septic tank				
	to pit					to pit					to pit				
	to unknown place/ not sure/DK					to unknown place/ not sure/DK					to unknown place/ not sure/DK				
	to elsewhere					to elsewhere					to elsewhere				
	<b>Public/shared flush/toilet</b>				Shared/public flush	<b>Public/shared flush/toilet</b>	11.7	0.5			<b>Public/shared flush/toilet</b>	11.7	0.5		
	to piped sewer system					to piped sewer system					to piped sewer system				
	to septic tank					to septic tank					to septic tank				
	to pit					to pit					to pit				
	to unknown place/ not sure/DK					to unknown place/ not sure/DK					to unknown place/ not sure/DK				
	to elsewhere					to elsewhere					to elsewhere				
	<b>Latrines</b>	39.0	88.0	74.2		<b>Latrines</b>	42.5	87.6			<b>Latrines</b>	42.5	87.6		
	<b>Pour flush latrines</b>					<b>Pour flush latrines</b>					<b>Pour flush latrines</b>				
	to piped sewer system					to piped sewer system					to piped sewer system				
	to septic tank					to septic tank					to septic tank				
	to pit					to pit					to pit				
	to unknown place/ not sure/DK					to unknown place/ not sure/DK					to unknown place/ not sure/DK				
	to elsewhere					to elsewhere					to elsewhere				
	<b>Private pour flush latrine</b>					<b>Private pour flush latrine</b>					<b>Private pour flush latrine</b>				
	to piped sewer system					to piped sewer system					to piped sewer system				
	to septic tank					to septic tank					to septic tank				
	to pit					to pit					to pit				
	to unknown place/ not sure/DK					to unknown place/ not sure/DK					to unknown place/ not sure/DK				
	to elsewhere					to elsewhere					to elsewhere				
	<b>Public/shared pour flush latrine</b>					<b>Public/shared pour flush latrine</b>					<b>Public/shared pour flush latrine</b>				
	to piped sewer system					to piped sewer system					to piped sewer system				
	to septic tank					to septic tank					to septic tank				
	to pit					to pit					to pit				
	to unknown place/ not sure/DK					to unknown place/ not sure/DK					to unknown place/ not sure/DK				
	to elsewhere					to elsewhere					to elsewhere				
	<b>Dry latrines</b>	39.0	88.0	74.2		<b>Dry latrines</b>	42.5	87.6			<b>Dry latrines</b>	42.5	87.6		
	<b>Improved latrines</b>					<b>Improved latrines</b>					<b>Improved latrines</b>				
	Ventilated Improved Pit latrine					Ventilated Improved Pit latrine					Ventilated Improved Pit latrine				
	Pit latrine with slab/covered latrine					Pit latrine with slab/covered latrine					Pit latrine with slab/covered latrine				
Dry latrine	Traditional latrine	33.0	83.9	69.6	Public dry latrines	Traditional latrine	21.9	3.3			Traditional latrine	21.9	3.3		
	Pit latrine without slab/open pit					Pit latrine without slab/open pit					Pit latrine without slab/open pit				
	Hanging toilet/hanging latrine					Hanging toilet/hanging latrine					Hanging toilet/hanging latrine				
Bucket latrine	Bucket latrine	6.0	4.1	4.6		Bucket latrine	5.6	4.3			Bucket latrine	5.6	4.3		
	Other					Other					Other				
	<b>Private Latrines</b>				Private dry latrine	<b>Private Latrines</b>	17.0	76.9			<b>Private Latrines</b>	17.0	76.9		
	Ventilated Improved Pit latrine					Ventilated Improved Pit latrine					Ventilated Improved Pit latrine				
	Pit latrine with slab/covered latrine					Pit latrine with slab/covered latrine					Pit latrine with slab/covered latrine				
	Traditional latrine					Traditional latrine	11.5	72.7			Traditional latrine	11.5	72.7		
	Pit latrine without slab/open pit					Pit latrine without slab/open pit					Pit latrine without slab/open pit				
	Hanging toilet/hanging latrine					Hanging toilet/hanging latrine					Hanging toilet/hanging latrine				
	Bucket latrine				Private bucket (Closetool)	Bucket latrine	5.5	4.2			Bucket latrine	5.5	4.2		
	Other					Other					Other				
	<b>Public/shared Latrines</b>				Shared dry latrine	<b>Public/shared Latrines</b>	3.6	7.5			<b>Public/shared Latrines</b>	3.6	7.5		
	Ventilated Improved Pit latrine					Ventilated Improved Pit latrine					Ventilated Improved Pit latrine				
	Pit latrine with slab/covered latrine					Pit latrine with slab/covered latrine					Pit latrine with slab/covered latrine				
	Traditional latrine					Traditional latrine	3.5	7.4			Traditional latrine	3.5	7.4		
	Pit latrine without slab/open pit					Pit latrine without slab/open pit					Pit latrine without slab/open pit				
	Hanging toilet/hanging latrine					Hanging toilet/hanging latrine					Hanging toilet/hanging latrine				
	Bucket latrine				Shared/public bucket (Closetool)	Bucket latrine	0.1	0.1			Bucket latrine	0.1	0.1		
	Other					Other					Other				
Biogas/3-compartment	<b>Composting toilets</b>	0.6	0.8	0.7		<b>Composting toilets</b>	0.6	0.8			<b>Composting toilets</b>	0.6	0.8		
	Composting toilet (private)				Private methane	Composting toilet (private)	0.1	0.7			Composting toilet (private)	0.1	0.7		
	Composting toilet (shared)				Shared/public methane	Composting toilet (shared)	0.5	0.2			Composting toilet (shared)	0.5	0.2		
	<b>Other improved</b>					<b>Other improved</b>					<b>Other improved</b>				
	Other					Other					Other				
	Other					Other					Other				
No latrine	<b>No facility, bush, field</b>	2.3	9.8	7.7	No toilet	<b>No facility, bush, field</b>	2.9	8.8			<b>No facility, bush, field</b>	2.9	8.8		
	<b>Other unimproved</b>					<b>Other unimproved</b>					<b>Other unimproved</b>				
	Other					Other					Other				
	Other					Other					Other				
	<b>DK/missing information</b>					<b>DK/missing information</b>					<b>DK/missing information</b>				
	<b>Total</b>	100.0	100.1	99.9		<b>Total</b>	100.0	100.0			<b>Total</b>	100.0	100.0		
							6.0	0.3				6.0	0.3		
<b>Calculations</b>						<b>Calculations</b>									
	50% of traditional latrines considered improved	16.5	42.0			50% of traditional latrines considered improved	18.4	41.7			50% of traditional latrines considered improved	18.4	41.7		
<b>Estimations</b>						<b>Estimations</b>					<b>Estimations</b>				
	% Sewerage estimated based on WHS03	41.3	0.3			% Sewerage estimated based on WHS03	38.4	0.5			% Sewerage estimated based on WHS03	38.4	0.5		
	<b>Access to improved sanitation</b>	75%	44%			<b>Access to improved sanitation</b>	73%	45%			<b>Access to improved sanitation</b>	73%	45%		
	<b>Access to sewerage connections</b>	41%	0%			<b>Access to sewerage connections</b>	38%	1%			<b>Access to sewerage connections</b>	38%	1%		
	Used for the estimates	Yes	Yes			Used for the estimates	Yes	Yes			Used for the estimates	Yes	Yes		
	Used for the estimates	Yes	Yes			Used for the estimates	Yes	Yes			Used for the estimates	Yes	Yes		
<b>Ratios</b>	Shared improved facilities/all improved facilities					Shared improved facilities/all improved facilities	34.1%	13.2%			Shared improved facilities/all improved facilities	34.1%	13.2%		
	Improved latrine / All latrines					Improved latrine / All latrines					Improved latrine / All latrines				
	Covered dry latrines / All dry latrines					Covered dry latrines / All dry latrines					Covered dry latrines / All dry latrines				
	VIP / All latrines					VIP / All latrines					VIP / All latrines				
	Traditional latrines / All latrines	85%	95%	94%		Traditional latrines / All latrines	52%	4%			Traditional latrines / All latrines	52%	4%		
	Improved + traditional latrines / All latrines					Improved + traditional latrines / All latrines					Improved + traditional latrines / All latrines				
	Sewerage connection among flush/pour flush					Sewerage connection among flush/pour flush	48%	3%			Sewerage connection among flush/pour flush	48%	3%		
	Sewerage connection among flush					Sewerage connection among flush					Sewerage connection among flush				
	Number of people covered by the survey					Number of people covered by the survey					Number of people covered by the survey				
	Number of households covered by the survey					Number of households covered by the survey					Number of households covered by the survey				
	Total population					Total population					Total population				
<b>Comments</b>						<b>Comments</b>					<b>Comments</b>				

Use of sanitation facilities		NHSS93			China			Use of sanitation facilities		CHS93			China						
National Health Services Survey					Economic, Population, Nutrition, and Health Survey														
MoH					1993					Household survey					1993				
Original denomination	Classification				Urban	Rural	Total	Original denomination	Classification				Urban	Rural	Total				
	<b>Flush and pour flush</b>				65.9	2.5			<b>Flush and pour flush</b>				49.2	10.9					
		to piped sewer system								to piped sewer system									
		to septic tank								to septic tank									
		to pit								to pit									
		to unknown place/ not sure/DK								to unknown place/ not sure/DK									
		to elsewhere								to elsewhere									
Water flush	<b>Flush/toilets</b>				65.9	2.5			<b>Flush/toilets</b>				49.2	10.9					
		to piped sewer system								to piped sewer system									
		to septic tank								to septic tank									
		to pit								to pit									
		to unknown place/ not sure/DK								to unknown place/ not sure/DK									
		to elsewhere								to elsewhere									
		<b>Private flush/toilet</b>							Flush, in-house	<b>Private flush/toilet</b>				41.8	6.7				
		to piped sewer system								to piped sewer system									
		to septic tank								to septic tank									
		to pit								to pit									
		to unknown place/ not sure/DK								to unknown place/ not sure/DK									
		to elsewhere								to elsewhere									
		<b>Public/shared flush/toilet</b>							Flush, outside house	<b>Public/shared flush/toilet</b>				7.4	4.2				
		to piped sewer system								to piped sewer system									
		to septic tank								to septic tank									
		to pit								to pit									
		to unknown place/ not sure/DK								to unknown place/ not sure/DK									
		to elsewhere								to elsewhere									
	<b>Latrines</b>								<b>Latrines</b>				49.3	86.5					
	<b>Pour flush latrines</b>								<b>Pour flush latrines</b>										
		to piped sewer system								to piped sewer system									
		to septic tank								to septic tank									
		to pit								to pit									
		to unknown place/ not sure/DK								to unknown place/ not sure/DK									
		to elsewhere								to elsewhere									
		<b>Private pour flush latrine</b>								<b>Private pour flush latrine</b>									
		to piped sewer system								to piped sewer system									
		to septic tank								to septic tank									
		to pit								to pit									
		to unknown place/ not sure/DK								to unknown place/ not sure/DK									
		to elsewhere								to elsewhere									
		<b>Public/shared pour flush latrine</b>								<b>Public/shared pour flush latrine</b>									
		to piped sewer system								to piped sewer system									
		to septic tank								to septic tank									
		to pit								to pit									
		to unknown place/ not sure/DK								to unknown place/ not sure/DK									
		to elsewhere								to elsewhere									
	<b>Dry latrines</b>								<b>Dry latrines</b>				49.3	86.5					
	<b>Improved latrines</b>								<b>Improved latrines</b>				20.8	32.7					
		Ventilated Improved Pit latrine								Ventilated Improved Pit latrine									
		Pit latrine with slab/covered latrine								Pit latrine with slab/covered latrine				20.8	32.7				
		Traditional latrine								Traditional latrine				16.6	19.4				
		Pit latrine without slab/open pit								Pit latrine without slab/open pit				11.9	34.4				
		Hanging toilet/hanging latrine								Hanging toilet/hanging latrine									
		Bucket latrine								Bucket latrine									
		Other								Other									
		<b>Private Latrines</b>							No flush, in-house (latrine)	<b>Private Latrines</b>				5.2	4.6				
		Ventilated Improved Pit latrine								Ventilated Improved Pit latrine									
		Pit latrine with slab/covered latrine								Pit latrine with slab/covered latrine									
		Traditional latrine								Traditional latrine				5.2	4.6				
		Pit latrine without slab/open pit								Pit latrine without slab/open pit									
		Hanging toilet/hanging latrine								Hanging toilet/hanging latrine									
		Bucket latrine								Bucket latrine									
		Other								Other									
		<b>Public/shared Latrines</b>							Cement open pit	<b>Public/shared Latrines</b>				44.1	81.9				
		Ventilated Improved Pit latrine								Ventilated Improved Pit latrine									
		Pit latrine with slab/covered latrine								Pit latrine with slab/covered latrine				20.8	32.7				
		Traditional latrine							No flush, outside house (latrine)	Traditional latrine				11.4	14.8				
		Pit latrine without slab/open pit							Earth open pit	Pit latrine without slab/open pit				11.9	34.4				
		Hanging toilet/hanging latrine								Hanging toilet/hanging latrine									
		Bucket latrine								Bucket latrine									
		Other								Other									
	<b>Composting toilets</b>								<b>Composting toilets</b>										
		Composting toilet (private)								Composting toilet (private)									
		Composting toilet (shared)								Composting toilet (shared)									
three compart	<b>Other improved</b>				2.5	2.7			<b>Other improved</b>										
		Other				2.0	0.8			Other									
Double Um funnel	Other				0.5	1.9			Other										
	<b>No facility, bush, field</b>							none	<b>No facility, bush, field</b>				1.3	1.3					
	<b>Other unimproved</b>							Other	<b>Other unimproved</b>				0.2	1.3					
		Other								Other				0.2	1.3				
	<b>DK/missing information</b>								<b>DK/missing information</b>										
	<b>Total</b>				68.4	5.2			<b>Total</b>				100.0	100.0					
<b>Calculations</b>																			
<b>Estimations</b>	Proportion of all "unsanitary facilities" considered to meet MDG/UMP definition of improved based on CENS2				12.8	41.0			50% of traditional latrines considered improved				8.3	9.7					
	% Sewerage estimated based on WHS03				46.8	0.5			% Sewerage estimated based on WHS03				34.9	2.1					
<b>Access to improved sanitation : 81% 46%</b>					<b>Access to improved sanitation : 78% 53%</b>														
<b>Access to sewerage connections : 47% 0%</b>					<b>Access to sewerage connections : 35% 2%</b>														
Used for the estimates: Yes Yes					Used for the estimates: No No														
Used for the estimates: Yes Yes					Used for the estimates: No No														
<b>Ratios</b>	Shared improved facilities/all improved facilities								Shared improved facilities/all improved facilities										
	Improved latrine / All latrines								Improved latrine / All latrines				42%	38%					
	Covered dry latrines / All dry latrines								Covered dry latrines / All dry latrines				42%	38%					
	VIP / All latrines								VIP / All latrines										
	Traditional latrines / All latrines								Traditional latrines / All latrines				34%	22%					
	Improved + traditional latrines / All latrines								Improved + traditional latrines / All latrines				76%	60%					
	Sewerage connection among flush/pour flush								Sewerage connection among flush/pour flush										
	Sewerage connection among flush								Sewerage connection among flush										
	Number of people covered by the survey:								Number of people covered by the survey:										
	Number of households covered by the survey:								Number of households covered by the survey:										
	Total population:								Total population:										
<b>Comments</b>									<b>Not nationally representative</b>										

Use of sanitation facilities		MICS95			China			Use of sanitation facilities		XXX			China		
Multiple Indicator Cluster Survey										<i>Incomplete data</i>					
National Bureau of Statistics					1995					1995					
Original denomination	Classification				Urban	Rural	Total	Original denomination	Classification				Urban	Rural	Total
	<b>Flush and pour flush</b>								<b>Flush and pour flush</b>						
		to piped sewer system								to piped sewer system					
		to septic tank								to septic tank					
		to pit								to pit					
		to unknown place/ not sure/DK								to unknown place/ not sure/DK					
		to elsewhere								to elsewhere					
	<b>Flush/toilets</b>								<b>Flush/toilets</b>						
		to piped sewer system								to piped sewer system					
		to septic tank								to septic tank					
		to pit								to pit					
		to unknown place/ not sure/DK								to unknown place/ not sure/DK					
		to elsewhere								to elsewhere					
	<b>Private flush/toilet</b>								<b>Private flush/toilet</b>						
		to piped sewer system								to piped sewer system					
		to septic tank								to septic tank					
		to pit								to pit					
		to unknown place/ not sure/DK								to unknown place/ not sure/DK					
		to elsewhere								to elsewhere					
	<b>Public/shared flush/toilet</b>								<b>Public/shared flush/toilet</b>						
		to piped sewer system								to piped sewer system					
		to septic tank								to septic tank					
		to pit								to pit					
		to unknown place/ not sure/DK								to unknown place/ not sure/DK					
		to elsewhere								to elsewhere					
	<b>Latrines</b>								<b>Latrines</b>						
	<b>Pour flush latrines</b>								<b>Pour flush latrines</b>						
		to piped sewer system								to piped sewer system					
		to septic tank								to septic tank					
		to pit								to pit					
		to unknown place/ not sure/DK								to unknown place/ not sure/DK					
		to elsewhere								to elsewhere					
	<b>Private pour flush latrine</b>								<b>Private pour flush latrine</b>						
		to piped sewer system								to piped sewer system					
		to septic tank								to septic tank					
		to pit								to pit					
		to unknown place/ not sure/DK								to unknown place/ not sure/DK					
		to elsewhere								to elsewhere					
	<b>Public/shared pour flush latrine</b>								<b>Public/shared pour flush latrine</b>						
		to piped sewer system								to piped sewer system					
		to septic tank								to septic tank					
		to pit								to pit					
		to unknown place/ not sure/DK								to unknown place/ not sure/DK					
		to elsewhere								to elsewhere					
	<b>Dry latrines</b>								<b>Dry latrines</b>						
	<b>Improved latrines</b>								<b>Improved latrines</b>						
		Ventilated Improved Pit latrine								Ventilated Improved Pit latrine					
		Pit latrine with slab/covered latrine								Pit latrine with slab/covered latrine					
		Traditional latrine								Traditional latrine					
		Pit latrine without slab/open pit								Pit latrine without slab/open pit					
		Hanging toilet/hanging latrine								Hanging toilet/hanging latrine					
		Bucket latrine								Bucket latrine					
		Other								Other					
	<b>Private Latrines</b>								<b>Private Latrines</b>						
		Ventilated Improved Pit latrine								Ventilated Improved Pit latrine					
		Pit latrine with slab/covered latrine								Pit latrine with slab/covered latrine					
		Traditional latrine								Traditional latrine					
		Pit latrine without slab/open pit								Pit latrine without slab/open pit					
		Hanging toilet/hanging latrine								Hanging toilet/hanging latrine					
		Bucket latrine								Bucket latrine					
		Other								Other					
	<b>Public/shared Latrines</b>								<b>Public/shared Latrines</b>						
		Ventilated Improved Pit latrine								Ventilated Improved Pit latrine					
		Pit latrine with slab/covered latrine								Pit latrine with slab/covered latrine					
		Traditional latrine								Traditional latrine					
		Pit latrine without slab/open pit								Pit latrine without slab/open pit					
		Hanging toilet/hanging latrine								Hanging toilet/hanging latrine					
		Bucket latrine								Bucket latrine					
		Other								Other					
	<b>Composting toilets</b>								<b>Composting toilets</b>						
		Composting toilet (private)								Composting toilet (private)					
		Composting toilet (shared)								Composting toilet (shared)					
	<b>Other improved</b>								<b>Other improved</b>						
		Other								Other					
		Other								Other					
	<b>No facility, bush, field</b>								<b>No facility, bush, field</b>						
	<b>Other unimproved</b>								<b>Other unimproved</b>						
		Other								Other					
		Other								Other					
	<b>DK/missing information</b>								<b>DK/missing information</b>						
	<b>Total</b>								<b>Total</b>						
Calculations								Calculations							
Estimations								Estimations							
<b>Access to improved sanitation :</b>								<b>Access to improved sanitation :</b>							
<b>Access to sewerage connections :</b>								<b>Access to sewerage connections :</b>							
		Used for the estimates:	No	No						Used for the estimates:	No	No			
		Used for the estimates:	No	No						Used for the estimates:	No	No			
Ratios		Shared improved facilities/all improved facilities								Shared improved facilities/all improved facilities					
		Improved latrine / All latrines								Improved latrine / All latrines					
		Covered dry latrines / All dry latrines								Covered dry latrines / All dry latrines					
		VIP / All latrines								VIP / All latrines					
		Traditional latrines / All latrines								Traditional latrines / All latrines					
		Improved + traditional latrines / All latrines								Improved + traditional latrines / All latrines					
	Sewerage connection among flush/pour flush								Sewerage connection among flush/pour flush						
	Sewerage connection among flush								Sewerage connection among flush						
	Number of people covered by the survey:								Number of people covered by the survey:						
	Number of households covered by the survey:								Number of households covered by the survey:						
	Total population:								Total population:						
Comments								Comments							

Use of sanitation facilities		CHS97			China			Use of sanitation facilities		ASR98			China		
Economic, Population, Nutrition, and Health Survey					Annual Statistical Report on National Rural Sanitary Latrine Improvement										
Household survey					1997					1998					
Original denomination	Classification	Urban	Rural	Total	Original denomination	Classification	Urban	Rural	Total						
	<b>Flush and pour flush</b>	59.8	20.0			<b>Flush and pour flush</b>			71.6						
	to piped sewer system					to piped sewer system									
	to septic tank					to septic tank			24.5						
	to pit					to pit			47.1						
	to unknown place/ not sure/DK					to unknown place/ not sure/DK									
	to elsewhere					to elsewhere									
	<b>Flush/toilets</b>	59.8	20.0			<b>Flush/toilets</b>									
	to piped sewer system					to piped sewer system									
	to septic tank					to septic tank									
	to pit					to pit									
	to unknown place/ not sure/DK					to unknown place/ not sure/DK									
	to elsewhere					to elsewhere									
Flush, in-house	<b>Private flush/toilet</b>	50.5	17.1			<b>Private flush/toilet</b>									
	to piped sewer system					to piped sewer system									
	to septic tank					to septic tank									
	to pit					to pit									
	to unknown place/ not sure/DK					to unknown place/ not sure/DK									
	to elsewhere					to elsewhere									
Flush, outside house	<b>Public/shared flush/toilet</b>	9.3	2.9			<b>Public/shared flush/toilet</b>									
	to piped sewer system					to piped sewer system									
	to septic tank					to septic tank									
	to pit					to pit									
	to unknown place/ not sure/DK					to unknown place/ not sure/DK									
	to elsewhere					to elsewhere									
	<b>Latrines</b>	36.0	77.4			<b>Latrines</b>			80.5						
	<b>Pour flush latrines</b>					<b>Pour flush latrines</b>			71.6						
	to piped sewer system					to piped sewer system									
	to septic tank					to septic tank			24.5						
	to pit					to pit			47.1						
	to unknown place/ not sure/DK					to unknown place/ not sure/DK									
	to elsewhere					to elsewhere									
	Private pour flush latrine					Private pour flush latrine									
	to piped sewer system					to piped sewer system									
	to septic tank					to septic tank									
	to pit					to pit									
	to unknown place/ not sure/DK					to unknown place/ not sure/DK									
	to elsewhere					to elsewhere									
	Public/shared pour flush latrine					Public/shared pour flush latrine									
	to piped sewer system					to piped sewer system									
	to septic tank					to septic tank									
	to pit					to pit									
	to unknown place/ not sure/DK					to unknown place/ not sure/DK									
	to elsewhere					to elsewhere									
	<b>Dry latrines</b>	36.0	77.4			<b>Dry latrines</b>			8.9						
	<b>Improved latrines</b>	17.6	35.3			<b>Improved latrines</b>			8.9						
	Ventilated Improved Pit latrine					Ventilated Improved Pit latrine			8.9						
Cement open pit	Pit latrine with slab/covered latrine	17.6	35.3			Pit latrine with slab/covered latrine									
	Traditional latrine	8.6	13.6			Traditional latrine									
Earth open pit	Pit latrine without slab/open pit	9.8	28.5			Pit latrine without slab/open pit									
	Hanging toilet/hanging latrine					Hanging toilet/hanging latrine									
	Bucket latrine					Bucket latrine									
	Other					Other									
	<b>Private Latrines</b>	2.2	4.1			<b>Private Latrines</b>									
	Ventilated Improved Pit latrine					Ventilated Improved Pit latrine									
	Pit latrine with slab/covered latrine					Pit latrine with slab/covered latrine									
	Traditional latrine					Traditional latrine									
	Pit latrine without slab/open pit					Pit latrine without slab/open pit									
	Hanging toilet/hanging latrine					Hanging toilet/hanging latrine									
	Bucket latrine					Bucket latrine									
	Other					Other									
No flush, in-house (latrine)	<b>Public/shared Latrines</b>	6.4	9.5			<b>Public/shared Latrines</b>									
	Ventilated Improved Pit latrine					Ventilated Improved Pit latrine									
	Pit latrine with slab/covered latrine					Pit latrine with slab/covered latrine									
	Traditional latrine					Traditional latrine									
	Pit latrine without slab/open pit					Pit latrine without slab/open pit									
	Hanging toilet/hanging latrine					Hanging toilet/hanging latrine									
	Bucket latrine					Bucket latrine									
	Other					Other									
No flush, outside house (latrine)	<b>Public/shared Latrines</b>	6.4	9.5			<b>Public/shared Latrines</b>									
	Ventilated Improved Pit latrine					Ventilated Improved Pit latrine									
	Pit latrine with slab/covered latrine					Pit latrine with slab/covered latrine									
	Traditional latrine					Traditional latrine									
	Pit latrine without slab/open pit					Pit latrine without slab/open pit									
	Hanging toilet/hanging latrine					Hanging toilet/hanging latrine									
	Bucket latrine					Bucket latrine									
	Other					Other									
	<b>Composting toilets</b>					<b>Composting toilets</b>			7.1						
	Composting toilet (private)					Composting toilet (private)									
	Composting toilet (shared)					Composting toilet (shared)									
	<b>Other improved</b>					<b>Other improved</b>			12.5						
	Other					Other			12.5						
	Other					Other									
none	<b>No facility, bush, field</b>	2.4	1.4			<b>No facility, bush, field</b>									
	<b>Other unimproved</b>	1.8	1.3			<b>Other unimproved</b>									
	Other	1.8	1.3			Other									
	Other					Other									
	<b>DK/missing information</b>					<b>DK/missing information</b>									
	<b>Total</b>	100.0	100.1			<b>Total</b>			100.1						
<b>Calculations</b>					<b>Calculations</b>										
<b>Estimations</b>	50% of traditional latrines considered improved	4.3	6.8		<b>Estimations</b>										
	% Sewerage estimated based on WHS03	42.5	3.9												
	<b>Access to improved sanitation :</b>	<b>82%</b>	<b>62%</b>			<b>Access to improved sanitation :</b>									
	<b>Access to sewerage connections :</b>	<b>42%</b>	<b>4%</b>			<b>Access to sewerage connections :</b>									
	Used for the estimates:	No	No			Used for the estimates:	No	No							
	Used for the estimates:	No	No			Used for the estimates:	No	No							
<b>Ratios</b>	Shared improved facilities/all improved facilities				<b>Ratios</b>	Shared improved facilities/all improved facilities									
	Improved latrine / All latrines	49%	46%			Improved latrine / All latrines			100%						
	Covered dry latrines / All dry latrines	49%	46%			Covered dry latrines / All dry latrines			100%						
	VIP / All latrines					VIP / All latrines									
	Traditional latrines / All latrines	24%	18%			Traditional latrines / All latrines									
	Improved + traditional latrines / All latrines	73%	63%			Improved + traditional latrines / All latrines									
	Sewerage connection among flush/pour flush					Sewerage connection among flush/pour flush									
	Sewerage connection among flush					Sewerage connection among flush									
	Number of people covered by the survey:					Number of people covered by the survey:									
	Number of households covered by the survey:					Number of households covered by the survey:									
	Total population:					Total population:									
<b>Comments</b>	Not nationally representative				<b>Comments</b>	Only improved categories listed									

Use of sanitation facilities		NHSS98			China			Use of sanitation facilities		PSS99			China		
National Health Service Survey					MOH			Population Sampling Survey					MOH		
Original denomination		Classification			Urban	Rural	Total	Original denomination		Classification			Urban	Rural	Total
	<b>Flush and pour flush</b>	to piped sewer system		65.1	5.6				<b>Flush and pour flush</b>	to piped sewer system		54.0	4.3		
		to septic tank								to septic tank					
		to pit								to pit					
		to unknown place/ not sure/DK								to unknown place/ not sure/DK					
		to elsewhere								to elsewhere					
Water flush	<b>Flush/toilets</b>	to piped sewer system		65.1	5.6		Flush		<b>Flush/toilets</b>	to piped sewer system		54.0	4.3		
		to septic tank								to septic tank					
		to pit								to pit					
		to unknown place/ not sure/DK								to unknown place/ not sure/DK					
		to elsewhere								to elsewhere					
	<b>Private flush/toilet</b>	to piped sewer system							<b>Private flush/toilet</b>	to piped sewer system					
		to septic tank								to septic tank					
		to pit								to pit					
		to unknown place/ not sure/DK								to unknown place/ not sure/DK					
		to elsewhere								to elsewhere					
	<b>Public/shared flush/toilet</b>	to piped sewer system							<b>Public/shared flush/toilet</b>	to piped sewer system					
		to septic tank								to septic tank					
		to pit								to pit					
		to unknown place/ not sure/DK								to unknown place/ not sure/DK					
		to elsewhere								to elsewhere					
	<b>Latrines</b>								<b>Latrines</b>			31.7	84.8		
	<b>Pour flush latrines</b>	to piped sewer system							<b>Pour flush latrines</b>	to piped sewer system					
		to septic tank								to septic tank					
		to pit								to pit					
		to unknown place/ not sure/DK								to unknown place/ not sure/DK					
		to elsewhere								to elsewhere					
	<b>Private pour flush latrine</b>	to piped sewer system							<b>Private pour flush latrine</b>	to piped sewer system					
		to septic tank								to septic tank					
		to pit								to pit					
		to unknown place/ not sure/DK								to unknown place/ not sure/DK					
		to elsewhere								to elsewhere					
	<b>Public/shared pour flush latrine</b>	to piped sewer system							<b>Public/shared pour flush latrine</b>	to piped sewer system					
		to septic tank								to septic tank					
		to pit								to pit					
		to unknown place/ not sure/DK								to unknown place/ not sure/DK					
		to elsewhere								to elsewhere					
	<b>Dry latrines</b>								<b>Dry latrines</b>			31.7	84.8		
	<b>Improved latrines</b>	Ventilated Improved Pit latrine					VIPI/deep-pit		<b>Improved latrines</b>	Ventilated Improved Pit latrine		12.2	17.7		
		Pit latrine with slab/covered latrine								Pit latrine with slab/covered latrine		12.2	17.7		
		Traditional latrine					Shallow-pit			Traditional latrine		19.5	67.1		
		Pit latrine without slab/open pit								Pit latrine without slab/open pit					
		Hanging toilet/hanging latrine								Hanging toilet/hanging latrine					
		Bucket latrine								Bucket latrine					
		Other								Other					
	<b>Private Latrines</b>	Ventilated Improved Pit latrine							<b>Private Latrines</b>	Ventilated Improved Pit latrine					
		Pit latrine with slab/covered latrine								Pit latrine with slab/covered latrine					
		Traditional latrine								Traditional latrine					
		Pit latrine without slab/open pit								Pit latrine without slab/open pit					
		Hanging toilet/hanging latrine								Hanging toilet/hanging latrine					
		Bucket latrine								Bucket latrine					
		Other								Other					
	<b>Public/shared Latrines</b>	Ventilated Improved Pit latrine							<b>Public/shared Latrines</b>	Ventilated Improved Pit latrine					
		Pit latrine with slab/covered latrine								Pit latrine with slab/covered latrine					
		Traditional latrine								Traditional latrine					
		Pit latrine without slab/open pit								Pit latrine without slab/open pit					
		Hanging toilet/hanging latrine								Hanging toilet/hanging latrine					
		Bucket latrine								Bucket latrine					
		Other								Other					
	<b>Composting toilets</b>	Composting toilet (private)					3-pit/2-pit bio gas		<b>Composting toilets</b>	Composting toilet (private)		1.9	1.9		
		Composting toilet (shared)								Composting toilet (shared)					
	<b>Other improved</b>	Other		3.5	2.6				<b>Other improved</b>	Other					
three compart		Other		3.2	1.2					Other					
Double Um funnel		Other		0.3	1.4					Other					
	<b>No facility, bush, field</b>						No Latrine		<b>No facility, bush, field</b>			7.8	4.1		
	<b>Other unimproved</b>						Others		<b>Other unimproved</b>			4.6	4.9		
		Other								Other		4.6	4.9		
		Other								Other					
	<b>DK/missing information</b>								<b>DK/missing information</b>						
	<b>Total</b>			68.6	8.2				<b>Total</b>			100.0	100.0		
										Open defecation/all unimproved		35.1%	9.6%		
<b>Calculations</b>									<b>Calculations</b>						
	<b>Estimations</b>	Proportion of all "unsanitary latrines" considered to meet MDG/UMP definition of improved based on PSS 99		9.6	40.5				<b>Estimations</b>	50% of traditional latrines considered improved		9.8	33.6		
		% Sewerage estimated based on WHS03		46.2	1.1							38.4	0.8		
	<b>Access to improved sanitation :</b>			<b>78%</b>	<b>49%</b>				<b>Access to improved sanitation :</b>			<b>78%</b>	<b>57%</b>		
	<b>Access to sewerage connections :</b>			<b>46%</b>	<b>1%</b>				<b>Access to sewerage connections :</b>			<b>38%</b>	<b>1%</b>		
	Used for the estimates:	Yes	Yes						Used for the estimates:	Yes	Yes				
	Used for the estimates:	Yes	Yes						Used for the estimates:	Yes	Yes				
	<b>Ratios</b>	Shared improved facilities/all improved facilities							<b>Ratios</b>	Shared improved facilities/all improved facilities					
		Improved latrine / All latrines								Improved latrine / All latrines		38%	21%		
		Covered dry latrines / All dry latrines								Covered dry latrines / All dry latrines		38%	21%		
		VIP / All latrines								VIP / All latrines		62%	79%		
		Traditional latrines / All latrines								Traditional latrines / All latrines		61%	88%		
		Improved + traditional latrines / All latrines								Improved + traditional latrines / All latrines					
		Sewerage connection among flush/pour flush								Sewerage connection among flush/pour flush					
		Sewerage connection among flush								Sewerage connection among flush					
		Number of people covered by the survey:								Number of people covered by the survey:					
		Number of households covered by the survey:								Number of households covered by the survey:					
		Total population:								Total population:					
<b>Comments</b>									<b>Comments</b>						



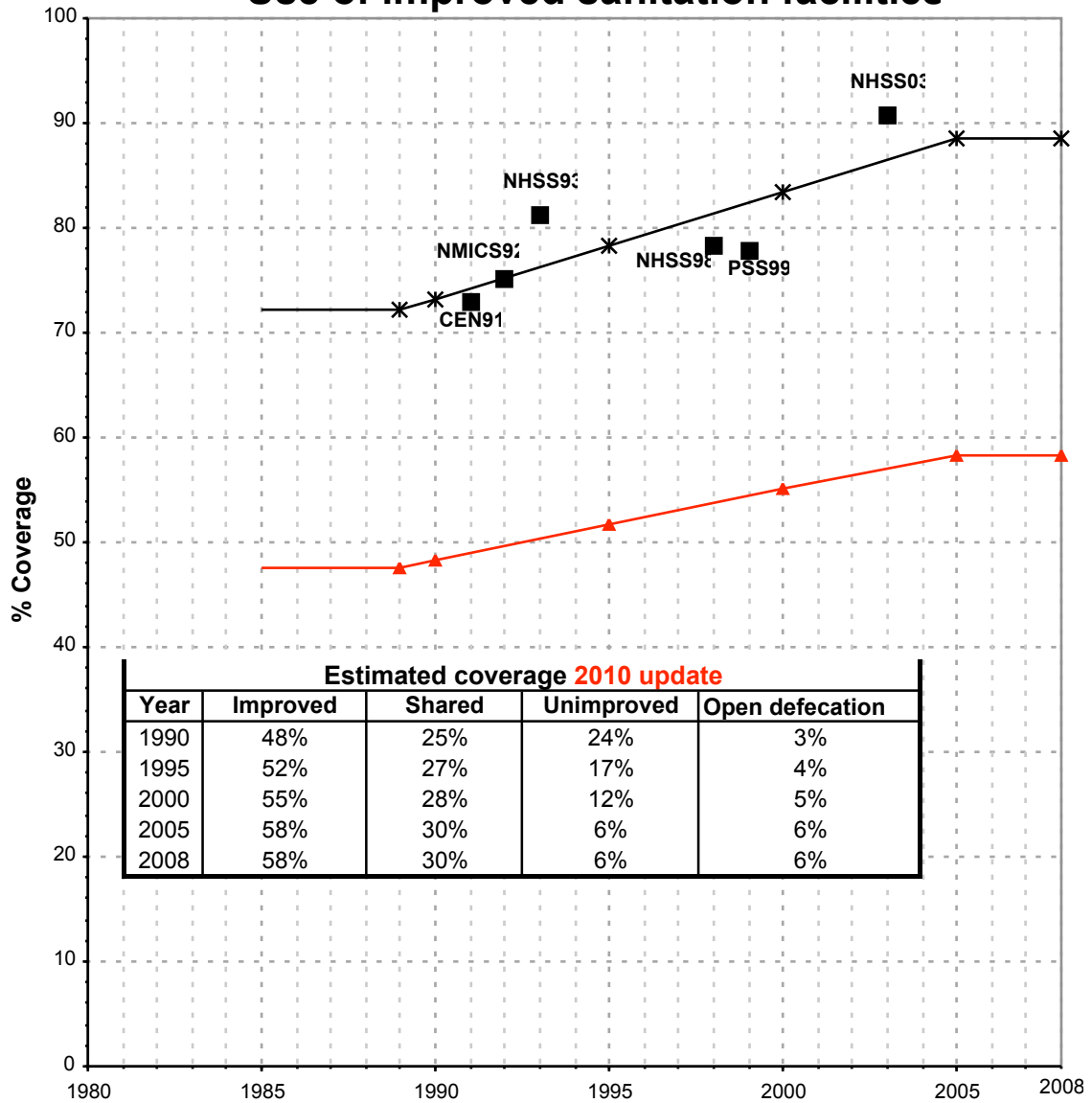


Use of sanitation facilities		CHS04			China			Use of sanitation facilities		AC06			China						
Economic, Population, Nutrition, and Health Survey					Agricultural Census														
Household survey					2004					National Bureau of Statistics of China					2006				
Original denomination	Classification				Urban	Rural	Total	Original denomination	Classification				Urban	Rural	Total				
	<b>Flush and pour flush</b>				74.2	27.6		Water flushing toilets	<b>Flush and pour flush</b>					12.8					
		to piped sewer system								to piped sewer system									
		to septic tank								to septic tank									
		to pit								to pit									
		to unknown place/ not sure/DK								to unknown place/ not sure/DK									
		to elsewhere								to elsewhere									
	<b>Flush/toilets</b>				74.2	27.6			<b>Flush/toilets</b>										
		to piped sewer system								to piped sewer system									
		to septic tank								to septic tank									
		to pit								to pit									
		to unknown place/ not sure/DK								to unknown place/ not sure/DK									
		to elsewhere								to elsewhere									
Flush, in house	<b>Private flush/toilet</b>				68.6	26.4			<b>Private flush/toilet</b>										
		to piped sewer system								to piped sewer system									
		to septic tank								to septic tank									
		to pit								to pit									
		to unknown place/ not sure/DK								to unknown place/ not sure/DK									
		to elsewhere								to elsewhere									
Flush, outside house ,public restroom	<b>Public/shared flush/toilet</b>				5.6	1.2			<b>Public/shared flush/toilet</b>										
		to piped sewer system								to piped sewer system									
		to septic tank								to septic tank									
		to pit								to pit									
		to unknown place/ not sure/DK								to unknown place/ not sure/DK									
		to elsewhere								to elsewhere									
	<b>Latrines</b>				22.3	69.1			<b>Latrines</b>					44.3					
	<b>Pour flush latrines</b>								<b>Pour flush latrines</b>										
		to piped sewer system								to piped sewer system									
		to septic tank								to septic tank									
		to pit								to pit									
		to unknown place/ not sure/DK								to unknown place/ not sure/DK									
		to elsewhere								to elsewhere									
		<b>Private pour flush latrine</b>								<b>Private pour flush latrine</b>									
		to piped sewer system								to piped sewer system									
		to septic tank								to septic tank									
		to pit								to pit									
		to unknown place/ not sure/DK								to unknown place/ not sure/DK									
		to elsewhere								to elsewhere									
		<b>Public/shared pour flush latrine</b>								<b>Public/shared pour flush latrine</b>									
		to piped sewer system								to piped sewer system									
		to septic tank								to septic tank									
		to pit								to pit									
		to unknown place/ not sure/DK								to unknown place/ not sure/DK									
		to elsewhere								to elsewhere									
	<b>Dry latrines</b>				22.3	69.1			<b>Dry latrines</b>					44.3					
	<b>Improved latrines</b>				12.2	38.1		Dry toilets	<b>Improved latrines</b>					44.3					
		Ventilated Improved Pit latrine								Ventilated Improved Pit latrine									
Cement openpit		Pit latrine with slab/covered latrine			12.2	38.1				Pit latrine with slab/covered latrine									
		Traditional latrine			5.9	11.2				Traditional latrine									
Earth openpit		Pit latrine without slab/open pit			4.2	19.8				Pit latrine without slab/open pit									
		Hanging toilet/hanging latrine								Hanging toilet/hanging latrine									
		Bucket latrine								Bucket latrine									
		Other								Other									
	<b>Private Latrines</b>				1.3	3.4			<b>Private Latrines</b>										
		Ventilated Improved Pit latrine								Ventilated Improved Pit latrine									
		Pit latrine with slab/covered latrine								Pit latrine with slab/covered latrine									
No flush in house		Traditional latrine			1.3	3.4				Traditional latrine									
		Pit latrine without slab/open pit								Pit latrine without slab/open pit									
		Hanging toilet/hanging latrine								Hanging toilet/hanging latrine									
		Bucket latrine								Bucket latrine									
		Other								Other									
	<b>Public/shared Latrines</b>				4.6	7.8			<b>Public/shared Latrines</b>										
		Ventilated Improved Pit latrine								Ventilated Improved Pit latrine									
		Pit latrine with slab/covered latrine								Pit latrine with slab/covered latrine									
No flush , outside house, public restroom		Traditional latrine			4.6	7.8				Traditional latrine									
		Pit latrine without slab/open pit								Pit latrine without slab/open pit									
		Hanging toilet/hanging latrine								Hanging toilet/hanging latrine									
		Bucket latrine								Bucket latrine									
		Other								Other									
	<b>Composting toilets</b>								<b>Composting toilets</b>										
		Composting toilet (private)								Composting toilet (private)									
		Composting toilet (shared)								Composting toilet (shared)									
	<b>Other improved</b>								<b>Other improved</b>										
		Other								Other									
		Other								Other									
No bathroom	<b>No facility, bush, field</b>				3.0	1.8			<b>No facility, bush, field</b>					4.1					
	<b>Other unimproved</b>				0.5	1.5		Privies or without toilets	<b>Other unimproved</b>					42.9					
		Other			0.5	1.5				Other									
		Other								Other									
	<b>DK/missing information</b>								<b>DK/missing information</b>										
	<b>Total</b>				100.0	100.0			<b>Total</b>					100.0					
														4.1					
Calculations								Calculations											
	50% of traditional latrines considered improved				2.9	5.6													
Estimations								Estimations											
	% Sewerage estimated based on WHS03				52.7	5.4													
	<b>Access to improved sanitation :</b>				<b>89%</b>	<b>71%</b>			<b>Access to improved sanitation :</b>					<b>57%</b>					
	<b>Access to sewerage connections :</b>				<b>53%</b>	<b>5%</b>			<b>Access to sewerage connections :</b>										
	Used for the estimates:				No	No			Used for the estimates:				No	Yes					
	Used for the estimates:				No	No			Used for the estimates:				No	Yes					
	Shared improved facilities/all improved facilities								Shared improved facilities/all improved facilities										
Ratios	Improved latrine / All latrines				55%	55%			Improved latrine / All latrines					100%					
	Covered dry latrines / All dry latrines				55%	55%			Covered dry latrines / All dry latrines										
	VIP / All latrines								VIP / All latrines										
	Traditional latrines / All latrines				26%	16%			Traditional latrines / All latrines										
	Improved + traditional latrines / All latrines				81%	71%			Improved + traditional latrines / All latrines										
	Sewerage connection among flush/pour flush								Sewerage connection among flush/pour flush										
	Sewerage connection among flush								Sewerage connection among flush										
	Number of people covered by the survey:								Number of people covered by the survey:										
	Number of households covered by the survey:								Number of households covered by the survey:										
	Total population:								Total population:										
Comments	Not nationally representative							Comments	Dry toilets are considered fully improved as the census includes a category "privies or without toilets" which include unimproved facility types										



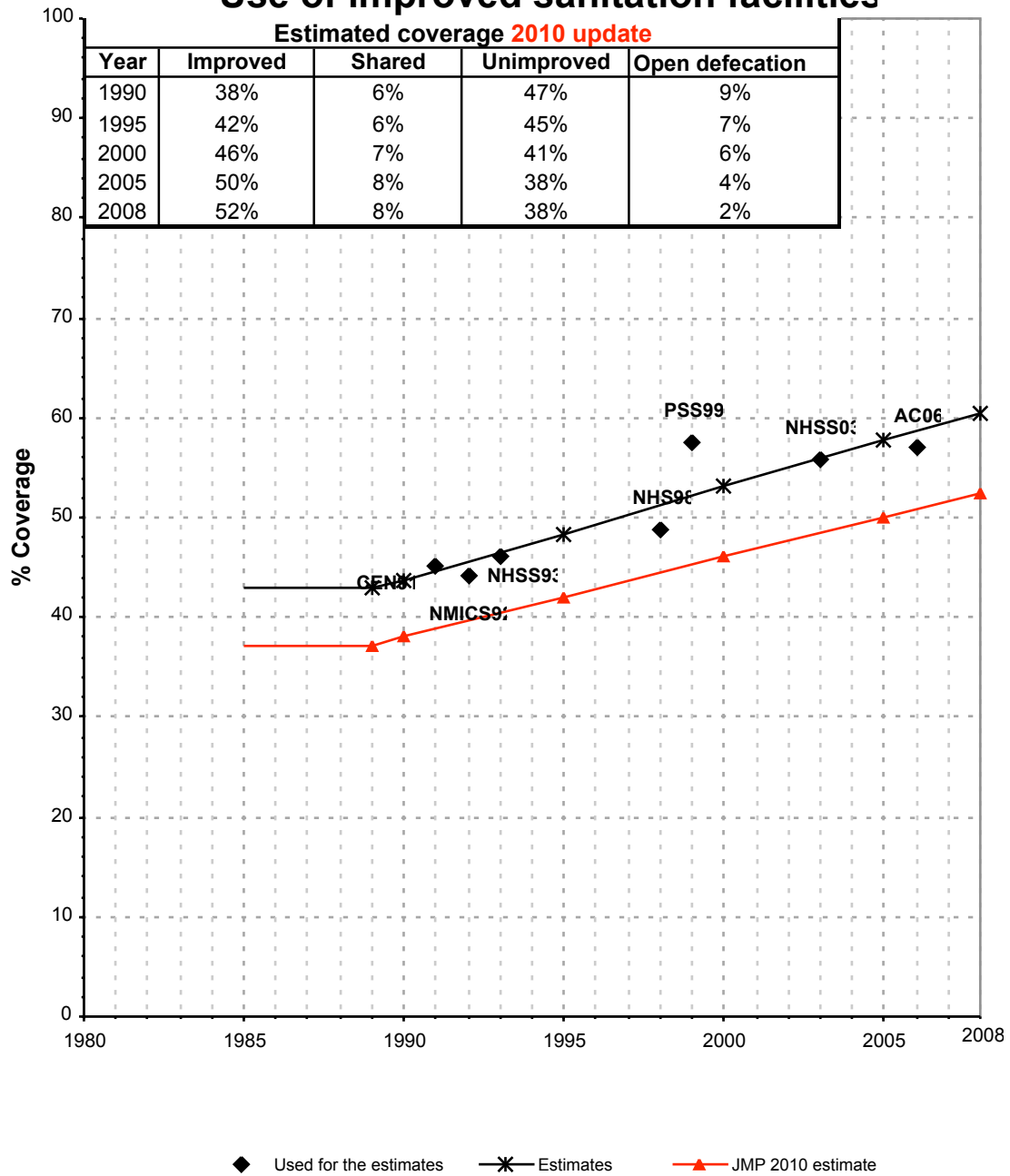
China			SANITATION															
			URBAN								RURAL							
			Sewer connection		Total		Open defecation		Shared		Sewer connection		Total		Open defecation		Shared	
Source	Code	Year	Used	Not used	Used	Not used	Used	Not used	Used	Not used	Used	Not used	Used	Not used	Used	Not used	Used	Not used
Economic, Population, Nutrition, and Health Survey	CHS89	1989		22.9		63.9		5.4				0.9		40.0		3.3		
Economic, Population, Nutrition, and Health Survey	CHS91	1991		27.7		73.8		2.1				1.6		48.9		0.9		
National Child Survey (Multiple Indicator Cluster Survey)	NMICS92	1992	41.3		75.2		2.3				0.3		44.3		9.8			
National census	CEN91	1991	38.4		73.0		2.9		34.1		0.5		45.2		8.8		13.2	
National Health Services Survey	NHSS93	1993	46.8		81.2						0.5		46.2					
Economic, Population, Nutrition, and Health Survey	CHS93	1993		34.9		78.3		1.3				2.1		53.3		1.3		
Multiple Indicator Cluster Survey	MICS95	1995																
Incomplete data	XXX	1995																
Economic, Population, Nutrition, and Health Survey	CHS97	1997		42.5		81.7		2.4				3.9		62.1		1.4		
Annual Statistical Report on National Rural Water Supply	ASR98	1998																
National Health Services Survey	NHS98	1998	46.2		78.2						1.1		48.7					
1/1,000 Population Sampling Survey	PSS99	1999	38.4		77.8		7.8				0.8		57.5		4.1			
Global Water Supply and Sanitation Assessment 2000.	JMP99	1999											35.9					
Economic, Population, Nutrition, and Health Survey	CHS00	2000		46.4		83.5		2.1				4.5		68.7		2.0		
World Health Survey	WHS03	2003		65.7		96.1		0.1				9.9		62.7		8.6		
National Health Service Survey	NHSS03	2003	56.1		90.7		3.3				1.0		55.7					
Economic, Population, Nutrition, and Health Survey	CHS04	2004		52.7		89.3		3.0				5.4		71.3		1.8		
Agriculture Census	AC06	2006											57.1		4.1			
Economic, Population, Nutrition, and Health Survey	CHS06	2006																
National Health Service Survey	NHSS08	2008		85.9		93.8		0.2				11.1		43.2		2.0		

# China - urban - Use of improved sanitation facilities



■ Used for the estimates    \* Estimates    ▲ JMP 2010 estimate

# China - rural - Use of improved sanitation facilities



# Sanitation

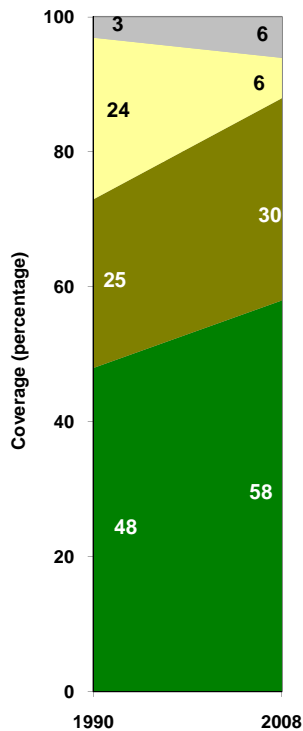
China	Sanitation coverage estimates					
	Urban (%)		Rural (%)		Total (%)	
	1990	2008	1990	2008	1990	2008
Improved facilities	48	58	38	52	41	55
Shared facilities	25	30	6	8	11	17
Unimproved facilities	24	6	47	38	41	24
Open defecation	3	6	9	2	7	4

Source: WHO/UNICEF JMP, 2010

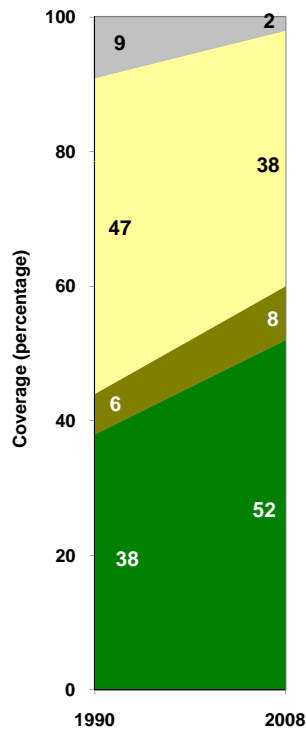
China	Urban		Rural		Total	
	1990	2008	1990	2008	1990	2008
Population (x1000)	312,933	577,039	829,157	760,372	1,142,090	1,337,411

Source: UN / Population Division, 2008

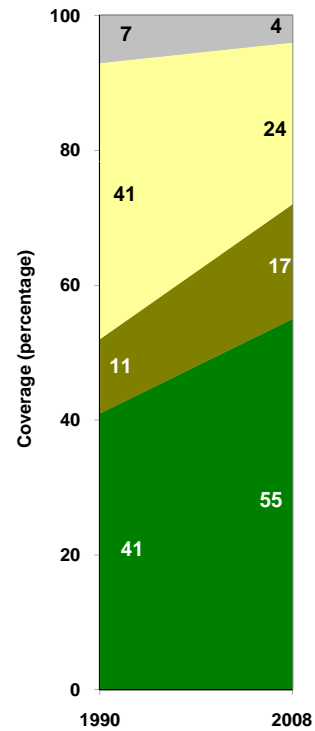
Urban sanitation trends



Rural sanitation trends



Total sanitation trends



■ Open defecation  
■ Unimproved facilities  
■ Shared facilities  
■ Improved facilities

■ Open defecation  
■ Unimproved facilities  
■ Shared facilities  
■ Improved facilities

■ Open defecation  
■ Unimproved facilities  
■ Shared facilities  
■ Improved facilities