

WHO / UNICEF

Joint Monitoring Programme
for Water Supply and Sanitation

Estimates for the use of

**Improved Drinking-Water Sources
and Improved Sanitation Facilities**

Updated March 2010

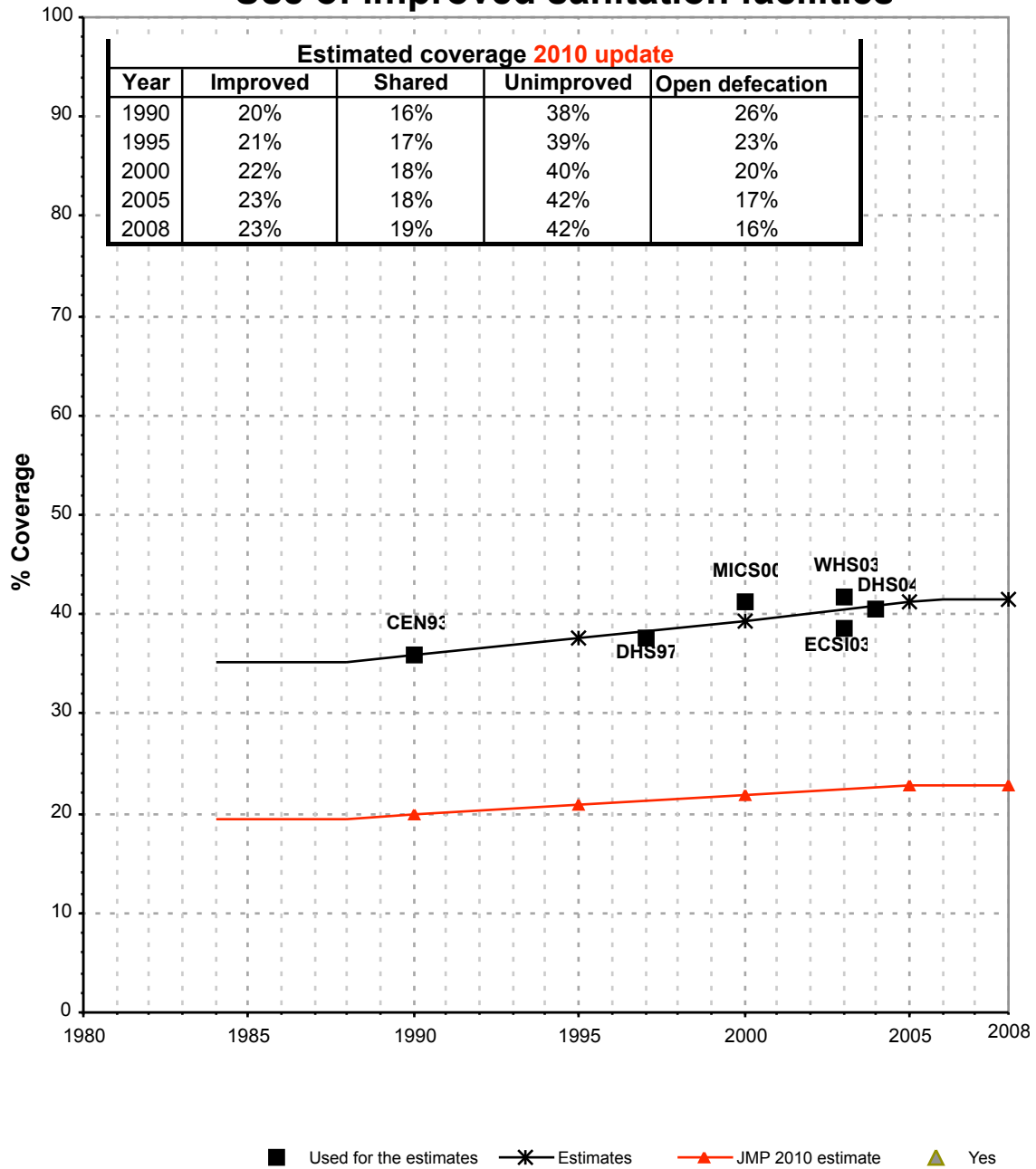
childinfo.org

Use of sanitation facilities		CEN93			Chad			Use of sanitation facilities		DHS97			Chad			
Census					1990			Demographic and Household Survey						1997		
as recorded in the Global Water Supply and Sanitation Assessment 2000. Water Supply and Sanitation Sector Questionnaire - 1999.																
Original denomination	Classification	Urban	Rural	Total	Original denomination	Classification	Urban	Rural	Total	Original denomination	Classification	Urban	Rural	Total		
	Flush and pour flush	2.4	0.3			Flush and pour flush	1.0	0.0			Flush and pour flush	1.0	0.0			
	to piped sewer system					to piped sewer system					to piped sewer system					
	to septic tank					to septic tank					to septic tank					
	to pit					to pit					to pit					
	to unknown place/ not sure/DK					to unknown place/ not sure/DK					to unknown place/ not sure/DK					
	to elsewhere					to elsewhere					to elsewhere					
WC	Flush/toilets	2.4	0.3		WC	Flush/toilets	1.0	0.0			Flush/toilets	1.0	0.0			
	to piped sewer system					to piped sewer system					to piped sewer system					
	to septic tank					to septic tank					to septic tank					
	to pit					to pit					to pit					
	to unknown place/ not sure/DK					to unknown place/ not sure/DK					to unknown place/ not sure/DK					
	to elsewhere					to elsewhere					to elsewhere					
	Private flush/toilet					Private flush/toilet					Private flush/toilet					
	to piped sewer system					to piped sewer system					to piped sewer system					
	to septic tank					to septic tank					to septic tank					
	to pit					to pit					to pit					
	to unknown place/ not sure/DK					to unknown place/ not sure/DK					to unknown place/ not sure/DK					
	to elsewhere					to elsewhere					to elsewhere					
	Public/shared flush/toilet					Public/shared flush/toilet					Public/shared flush/toilet					
	to piped sewer system					to piped sewer system					to piped sewer system					
	to septic tank					to septic tank					to septic tank					
	to pit					to pit					to pit					
	to unknown place/ not sure/DK					to unknown place/ not sure/DK					to unknown place/ not sure/DK					
	to elsewhere					to elsewhere					to elsewhere					
	Latrines	71.2	6.6			Latrines	77.7	11.2			Latrines	77.7	11.2			
	Pour flush latrines					Pour flush latrines					Pour flush latrines					
	to piped sewer system					to piped sewer system					to piped sewer system					
	to septic tank					to septic tank					to septic tank					
	to pit					to pit					to pit					
	to unknown place/ not sure/DK					to unknown place/ not sure/DK					to unknown place/ not sure/DK					
	to elsewhere					to elsewhere					to elsewhere					
	Private pour flush latrine					Private pour flush latrine					Private pour flush latrine					
	to piped sewer system					to piped sewer system					to piped sewer system					
	to septic tank					to septic tank					to septic tank					
	to pit					to pit					to pit					
	to unknown place/ not sure/DK					to unknown place/ not sure/DK					to unknown place/ not sure/DK					
	to elsewhere					to elsewhere					to elsewhere					
	Public/shared pour flush latrine					Public/shared pour flush latrine					Public/shared pour flush latrine					
	to piped sewer system					to piped sewer system					to piped sewer system					
	to septic tank					to septic tank					to septic tank					
	to pit					to pit					to pit					
	to unknown place/ not sure/DK					to unknown place/ not sure/DK					to unknown place/ not sure/DK					
	to elsewhere					to elsewhere					to elsewhere					
Pit	Dry latrines	71.2	6.6			Dry latrines	77.7	11.2			Dry latrines	77.7	11.2			
	Improved latrines					Improved latrines					Improved latrines					
	Ventilated Improved Pit latrine					Ventilated Improved Pit latrine					Ventilated Improved Pit latrine					
	Pit latrine with slab/covered latrine				Improved Pit	Pit latrine with slab/covered latrine					Pit latrine with slab/covered latrine					
	Traditional latrine				Simple Pit	Traditional latrine	27.3	0.6			Traditional latrine					
	Pit latrine without slab/open pit					Pit latrine without slab/open pit	50.4	10.6			Pit latrine without slab/open pit					
	Hanging toilet/hanging latrine					Hanging toilet/hanging latrine					Hanging toilet/hanging latrine					
	Bucket latrine					Bucket latrine					Bucket latrine					
	Other					Other					Other					
	Private Latrines					Private Latrines					Private Latrines					
	Ventilated Improved Pit latrine					Ventilated Improved Pit latrine					Ventilated Improved Pit latrine					
	Pit latrine with slab/covered latrine					Pit latrine with slab/covered latrine					Pit latrine with slab/covered latrine					
	Traditional latrine					Traditional latrine					Traditional latrine					
	Pit latrine without slab/open pit					Pit latrine without slab/open pit					Pit latrine without slab/open pit					
	Hanging toilet/hanging latrine					Hanging toilet/hanging latrine					Hanging toilet/hanging latrine					
	Bucket latrine					Bucket latrine					Bucket latrine					
	Other					Other					Other					
	Public/shared Latrines					Public/shared Latrines					Public/shared Latrines					
	Ventilated Improved Pit latrine					Ventilated Improved Pit latrine					Ventilated Improved Pit latrine					
	Pit latrine with slab/covered latrine					Pit latrine with slab/covered latrine					Pit latrine with slab/covered latrine					
	Traditional latrine					Traditional latrine					Traditional latrine					
	Pit latrine without slab/open pit					Pit latrine without slab/open pit					Pit latrine without slab/open pit					
	Hanging toilet/hanging latrine					Hanging toilet/hanging latrine					Hanging toilet/hanging latrine					
	Bucket latrine					Bucket latrine					Bucket latrine					
	Other					Other					Other					
	Composting toilets					Composting toilets					Composting toilets					
	Composting toilet (private)					Composting toilet (private)					Composting toilet (private)					
	Composting toilet (shared)					Composting toilet (shared)					Composting toilet (shared)					
	Other improved					Other improved					Other improved					
	Other					Other					Other					
	Other					Other					Other					
Nature	No facility, bush, field	26.4	93.1		No Facilities/Nature	No facility, bush, field	21.1	88.5			No facility, bush, field	21.1	88.5			
	Other unimproved					Other unimproved	0.2	0.3			Other unimproved	0.2	0.3			
	Other				Other/Not Defined	Other	0.2	0.3			Other	0.2	0.3			
	Other					Other					Other					
	DK/missing information					DK/missing information					DK/missing information					
	Total	100.0	100.0			Total	100.0	100.0			Total	100.0	100.0			
Calculations					Calculations					Calculations						
	Improved latrines based on WHS 03	33.5	3.2			Improved latrines based on WHS 03	36.5	5.4			Improved latrines based on WHS 03	36.5	5.4			
Estimations					Estimations					Estimations						
	SC, based on WHS03	1.1	0.0			SC, based on WHS03	0.5	0.0			SC, based on WHS03	0.5	0.0			
Access to improved sanitation :		36%	3%		Access to improved sanitation :		38%	5%		Access to improved sanitation :		38%	5%			
Access to sewerage connections :		1%	0%		Access to sewerage connections :		0%	0%		Access to sewerage connections :		0%	0%			
Used for the estimates		Yes	Yes		Used for the estimates		Yes	Yes		Used for the estimates		Yes	Yes			
Used for the estimates		Yes	Yes		Used for the estimates		Yes	Yes		Used for the estimates		Yes	Yes			
Ratios	Shared improved facilities/all improved facilities				Ratios	Shared improved facilities/all improved facilities				Ratios	Shared improved facilities/all improved facilities					
	Improved latrine / All latrines					Improved latrine / All latrines					Improved latrine / All latrines					
	Covered dry latrines / All dry latrines					Covered dry latrines / All dry latrines					Covered dry latrines / All dry latrines					
	VIP / All latrines					VIP / All latrines					VIP / All latrines					
	Traditional latrines / All latrines					Traditional latrines / All latrines					Traditional latrines / All latrines	35%	5%			
	Improved + traditional latrines / All latrines					Improved + traditional latrines / All latrines					Improved + traditional latrines / All latrines					
Sewerage connection among flush/pour flush					Sewerage connection among flush/pour flush					Sewerage connection among flush/pour flush						
Sewerage connection among flush					Sewerage connection among flush					Sewerage connection among flush						
Number of people covered by the survey:					Number of people covered by the survey:					Number of people covered by the survey:						
Number of households covered by the survey:					Number of households covered by the survey:					Number of households covered by the survey:						
Total population:		1324.5	4869		Total population:					Total population:						
Comments					Comments					Comments						

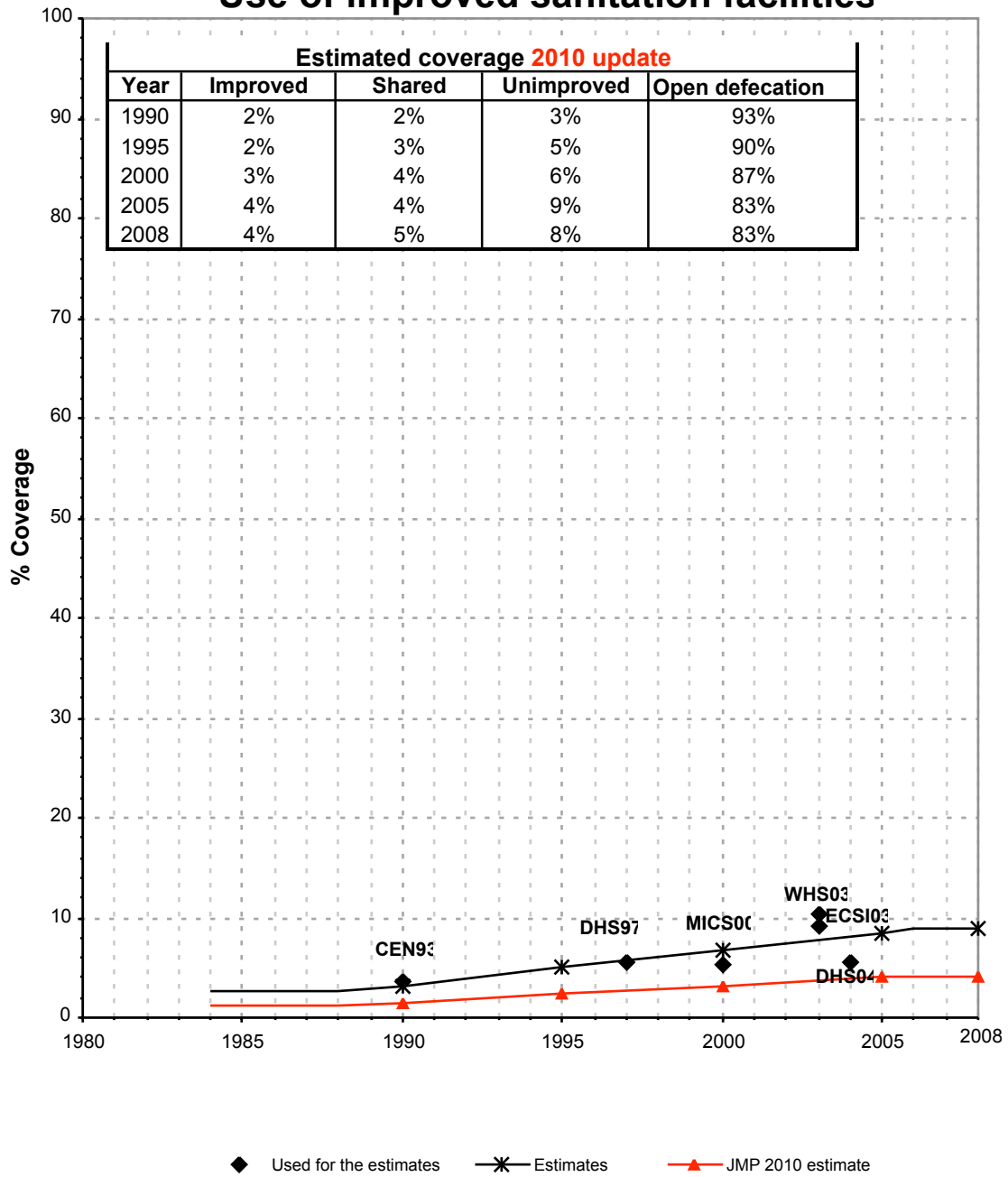
Use of sanitation facilities		JMP99			Chad			Use of sanitation facilities		MICS00			Chad						
Global Water Supply and Sanitation Assessment 2000.					Enquete de grappes a indicateurs multiples														
Water Supply and Sanitation Sector Questionnaire - 1999. Form 6 sent to WHO.					1999					Multiple Indicator Cluster Survey					2000				
Original denomination	Classification	Urban	Rural	Total	Original denomination	Classification	Urban	Rural	Total										
Population served with household connections to conventional	Flush and pour flush to piped sewer system to septic tank to pit to unknown place/ not sure/DK to elsewhere	0.0	0.0	0.0		Flush and pour flush to piped sewer system to septic tank to pit to unknown place/ not sure/DK to elsewhere													
	Flush/toilets to piped sewer system to septic tank to pit to unknown place/ not sure/DK to elsewhere				Toilette/chasse d'eau	Flush/toilets to piped sewer system to septic tank to pit to unknown place/ not sure/DK to elsewhere	0.9	0.0											
	Private flush/toilet to piped sewer system to septic tank to pit to unknown place/ not sure/DK to elsewhere					Private flush/toilet to piped sewer system to septic tank to pit to unknown place/ not sure/DK to elsewhere													
	Public/shared flush/toilet to piped sewer system to septic tank to pit to unknown place/ not sure/DK to elsewhere					Public/shared flush/toilet to piped sewer system to septic tank to pit to unknown place/ not sure/DK to elsewhere													
	Latrines					Latrines	81.7	11.5											
	Pour flush latrines to piped sewer system to septic tank to pit to unknown place/ not sure/DK to elsewhere				Latrine à évacuation	Pour flush latrines to piped sewer system to septic tank to pit to unknown place/ not sure/DK to elsewhere	3.8	0.0											
	Private pour flush latrine to piped sewer system to septic tank to pit to unknown place/ not sure/DK to elsewhere					Private pour flush latrine to piped sewer system to septic tank to pit to unknown place/ not sure/DK to elsewhere													
	Public/shared pour flush latrine to piped sewer system to septic tank to pit to unknown place/ not sure/DK to elsewhere					Public/shared pour flush latrine to piped sewer system to septic tank to pit to unknown place/ not sure/DK to elsewhere													
	Dry latrines					Dry latrines	77.9	11.5											
	Improved latrines Ventilated Improved Pit latrine Pit latrine with slab/covered latrine Traditional latrine Pit latrine without slab/open pit Hanging toilet/hanging latrine Bucket latrine					Improved latrines Ventilated Improved Pit latrine Pit latrine with slab/covered latrine Traditional latrine Pit latrine without slab/open pit Hanging toilet/hanging latrine Bucket latrine Other	1.3	0.0											
	Private Latrines Ventilated Improved Pit latrine Pit latrine with slab/covered latrine Traditional latrine Pit latrine without slab/open pit Hanging toilet/hanging latrine Bucket latrine				Latrine à ventilation Latrine traditionnelle Trou ouvert	Private Latrines Ventilated Improved Pit latrine Pit latrine with slab/covered latrine Traditional latrine Pit latrine without slab/open pit Hanging toilet/hanging latrine Bucket latrine Other	77.9	11.5											
	Public/shared Latrines Ventilated Improved Pit latrine Pit latrine with slab/covered latrine Traditional latrine Pit latrine without slab/open pit Hanging toilet/hanging latrine Bucket latrine					Public/shared Latrines Ventilated Improved Pit latrine Pit latrine with slab/covered latrine Traditional latrine Pit latrine without slab/open pit Hanging toilet/hanging latrine Bucket latrine Other	1.3	0.0											
	Composting toilets Composting toilet (private) Composting toilet (shared)					Composting toilets Composting toilet (private) Composting toilet (shared)													
Population without household connections but served	Other improved Other	2.4	0.3			Other improved Other													
	No facility, bush, field				Pas de toilette/nature	No facility, bush, field	17.3	88.4											
Total population unserved	Other unimproved Other DK/missing information	97.6	99.7		Manquant	Other unimproved Other DK/missing information	0.2	0.1											
	Total	100.0	100.0			Total	100.1	100.0											
Calculations					Calculations														
Estimations					Estimations	improved latrines based on WHS 03	35.1	5.4											
						SC, based on WHS03	1.7	0.0											
Access to improved plus shared sanitation:		2%	0%		Access to improved sanitation :		41%	5%											
Access to sewerage connections :		0%	0%		Access to sewerage connections :		2%	0%											
Used for the estimates		No	No		Used for the estimates		Yes	Yes											
Used for the estimates		No	No		Used for the estimates		Yes	Yes											
Ratios	Shared improved facilities/all improved facilities				Shared improved facilities/all improved facilities														
	Improved latrine / All latrines				Improved latrine / All latrines	6%	0%												
	Covered dry latrines / All dry latrines				Covered dry latrines / All dry latrines	2%	0%												
	VIP / All latrines				VIP / All latrines	82%	82%												
	Improved + traditional latrines / All latrines				Improved + traditional latrines / All latrines	88%	82%												
					Sewerage connection among flush/pour flush														
					Sewerage connection among flush														
	Number of people covered by the survey:				Number of people covered by the survey:														
	Number of households covered by the survey:				Number of households covered by the survey:														
	Total population:	1324.5	4869		Total population:														
Comments					Comments														

Chad			SANITATION															
			URBAN								RURAL							
			Sewer connection		Total		Open defecation		Shared		Sewer connection		Total		Open defecation		Shared	
Source	Code	Year	Used	Not used	Used	Not used	Used	Not used	Used	Not used	Used	Not used	Used	Not used	Used	Not used	Used	Not used
Census	CEN93	1990	1.1		35.9		26.4				0.0		3.5		93.1			
Demographic and Household Survey	DHS97	1997	0.5		37.5		21.1				0.0		5.4		88.5			
Global Water Supply and Sanitation Assessment 2000.	JMP99	1999		0.0		2.4						0.0		0.3				
Enquete de grappes a indicateurs multiples	MICS00	2000	1.7		41.1		17.3				0.0		5.4		88.4			
World Health Survey	WHS03	2003	2.8		41.7		14.7		44.8		0.3		9.2		82.1		52.8	
Demographic and Household Survey	DHS04	2004	2.6		40.6		18.0				0.1		5.6		88.1			
Enquête sur la Consommation et le Secteur Informel	ECSI03	2003			38.5		22.8						10.3		81.1			

Chad - urban - Use of improved sanitation facilities



Chad - rural - Use of improved sanitation facilities



Sanitation

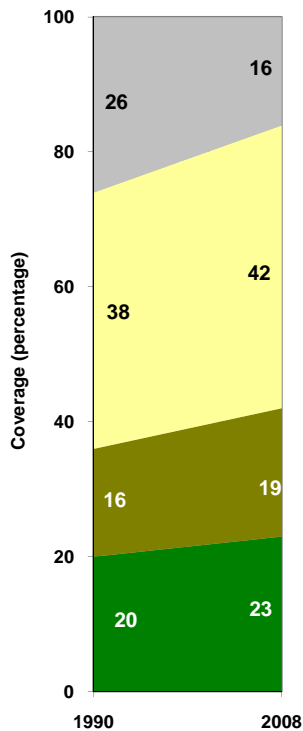
Chad	Sanitation coverage estimates					
	Urban (%)		Rural (%)		Total (%)	
	1990	2008	1990	2008	1990	2008
Improved facilities	20	23	2	4	6	9
Shared facilities	16	19	2	5	5	9
Unimproved facilities	38	42	3	8	10	17
Open defecation	26	16	93	83	79	65

Source: WHO/UNICEF JMP, 2010

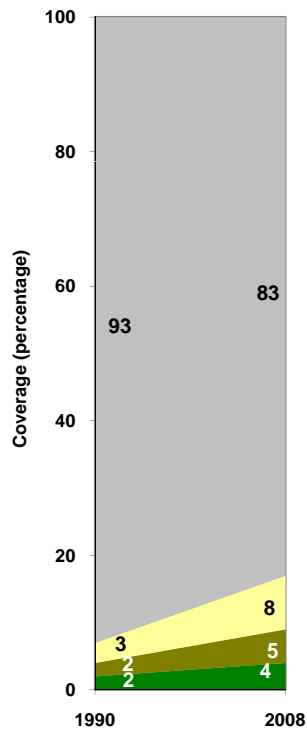
Chad	Urban		Rural		Total	
	1990	2008	1990	2008	1990	2008
Population (x1000)	1,271	2,905	4,835	8,009	6,105	10,914

Source: UN / Population Division, 2008

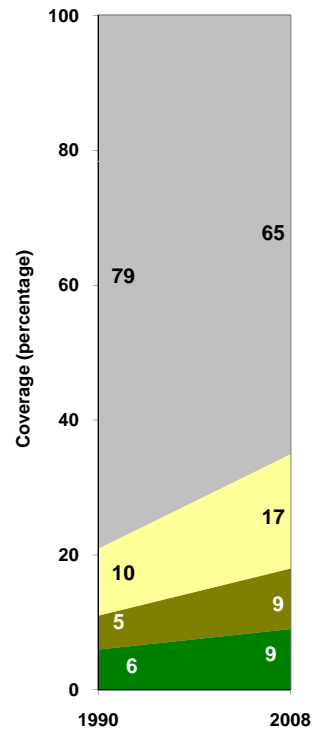
Urban sanitation trends



Rural sanitation trends



Total sanitation trends



■ Open defecation
 ■ Unimproved facilities
 ■ Shared facilities
 ■ Improved facilities

■ Open defecation
 ■ Unimproved facilities
 ■ Shared facilities
 ■ Improved facilities

■ Open defecation
 ■ Unimproved facilities
 ■ Shared facilities
 ■ Improved facilities