

**WHO / UNICEF**

**Joint Monitoring Programme**  
for Water Supply and Sanitation

Estimates for the use of

**Improved Drinking-Water Sources  
and Improved Sanitation Facilities**

Updated March 2010

[childinfo.org](http://childinfo.org)

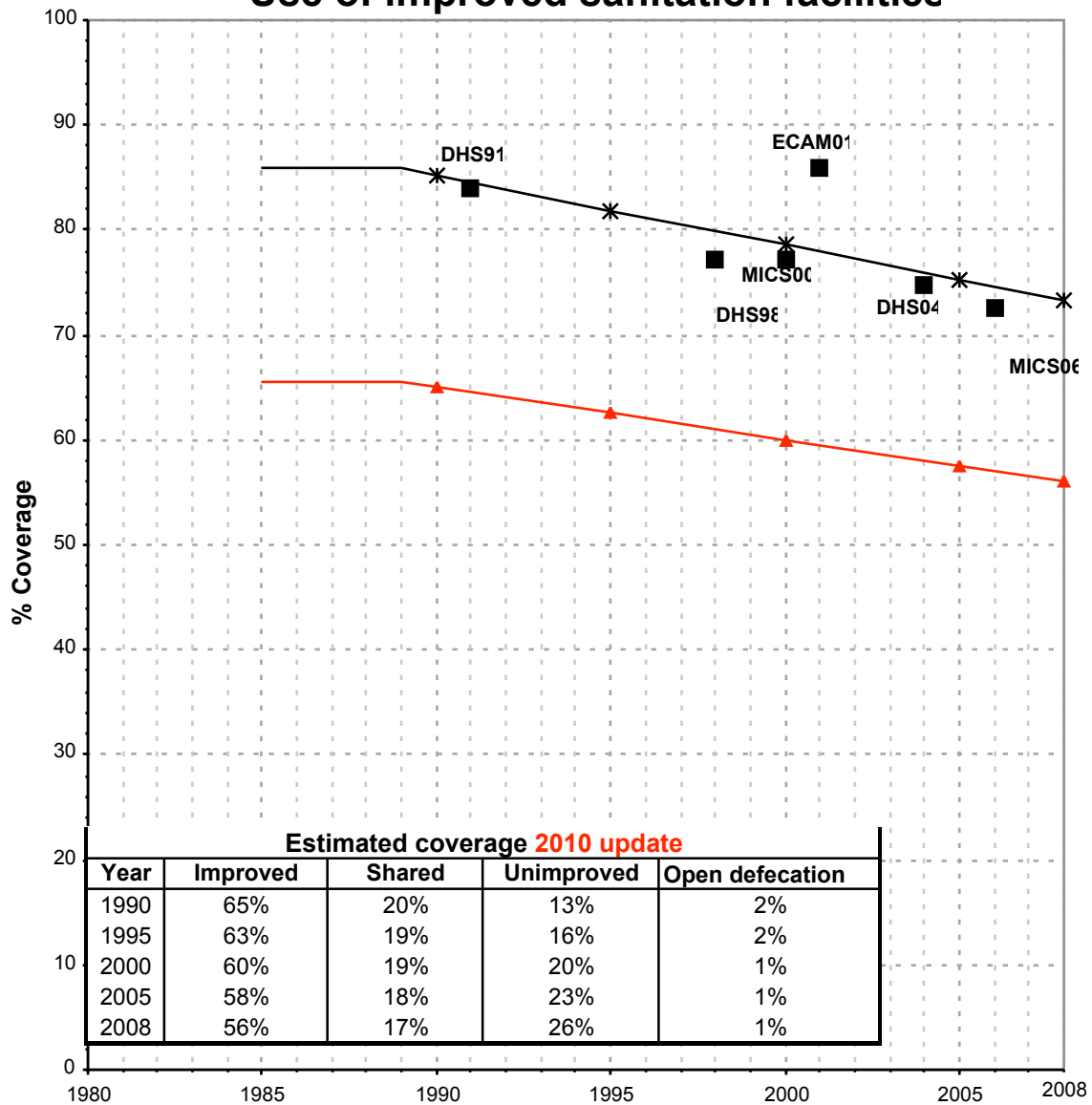
Use of sanitation facilities		DHS91			DHS98				
Demographic and Health Survey		Cameroon			Cameroon				
		1991			1998				
Original denomination	Classification	Urban	Rural	Total	Original denomination	Classification	Urban	Rural	Total
	<b>Flush and pour flush</b>	14.0	0.8			<b>Flush and pour flush</b>	18.1	1.3	
	to piped sewer system					to piped sewer system			
	to septic tank					to septic tank			
	to pit					to pit			
	to unknown place/ not sure/DK					to unknown place/ not sure/DK			
	to elsewhere					to elsewhere			
Chasse d'eau	<b>Flush/toilets</b>	14.0	0.8		Chasse d'eau	<b>Flush/toilets</b>	18.1	1.3	
	to piped sewer system					to piped sewer system			
	to septic tank					to septic tank			
	to pit					to pit			
	to unknown place/ not sure/DK					to unknown place/ not sure/DK			
	to elsewhere					to elsewhere			
	<b>Private flush/toilet</b>					<b>Private flush/toilet</b>			
	to piped sewer system					to piped sewer system			
	to septic tank					to septic tank			
	to pit					to pit			
	to unknown place/ not sure/DK					to unknown place/ not sure/DK			
	to elsewhere					to elsewhere			
	<b>Public/shared flush/toilet</b>					<b>Public/shared flush/toilet</b>			
	to piped sewer system					to piped sewer system			
	to septic tank					to septic tank			
	to pit					to pit			
	to unknown place/ not sure/DK					to unknown place/ not sure/DK			
	to elsewhere					to elsewhere			
	<b>Latrines</b>	83.7	77.2			<b>Latrines</b>	80.4	82.4	
	<b>Pour flush latrines</b>					<b>Pour flush latrines</b>			
	to piped sewer system					to piped sewer system			
	to septic tank					to septic tank			
	to pit					to pit			
	to unknown place/ not sure/DK					to unknown place/ not sure/DK			
	to elsewhere					to elsewhere			
	<b>Private pour flush latrine</b>					<b>Private pour flush latrine</b>			
	to piped sewer system					to piped sewer system			
	to septic tank					to septic tank			
	to pit					to pit			
	to unknown place/ not sure/DK					to unknown place/ not sure/DK			
	to elsewhere					to elsewhere			
	<b>Public/shared pour flush latrine</b>					<b>Public/shared pour flush latrine</b>			
	to piped sewer system					to piped sewer system			
	to septic tank					to septic tank			
	to pit					to pit			
	to unknown place/ not sure/DK					to unknown place/ not sure/DK			
	to elsewhere					to elsewhere			
	<b>Dry latrines</b>	83.7	77.2			<b>Dry latrines</b>	80.4	82.4	
	<b>Improved latrines</b>	59.3	20.0			<b>Improved latrines</b>	42.3	13.9	
	Ventilated Improved Pit latrine					Ventilated Improved Pit latrine			
Latrine Aménagé	Pit latrine with slab/covered latrine	59.3	20.0		Latrine améliorées	Pit latrine with slab/covered latrine	42.3	13.9	
	Traditional latrine					Traditional latrine			
	Pit latrine without slab/open pit					Pit latrine without slab/open pit			
	Hanging toilet/hanging latrine					Hanging toilet/hanging latrine			
	Bucket latrine					Bucket latrine			
Latrine Sommaire*	Other	24.4	57.2		Latrine Sommaire*	Other	38.1	68.5	
	<b>Private Latrines</b>					<b>Private Latrines</b>			
	Ventilated Improved Pit latrine					Ventilated Improved Pit latrine			
	Pit latrine with slab/covered latrine					Pit latrine with slab/covered latrine			
	Traditional latrine					Traditional latrine			
	Pit latrine without slab/open pit					Pit latrine without slab/open pit			
	Hanging toilet/hanging latrine					Hanging toilet/hanging latrine			
	Bucket latrine					Bucket latrine			
	Other					Other			
	<b>Public/shared Latrines</b>					<b>Public/shared Latrines</b>			
	Ventilated Improved Pit latrine					Ventilated Improved Pit latrine			
	Pit latrine with slab/covered latrine					Pit latrine with slab/covered latrine			
	Traditional latrine					Traditional latrine			
	Pit latrine without slab/open pit					Pit latrine without slab/open pit			
	Hanging toilet/hanging latrine					Hanging toilet/hanging latrine			
	Bucket latrine					Bucket latrine			
	Other					Other			
	<b>Composting toilets</b>					<b>Composting toilets</b>			
	Composting toilet (private)					Composting toilet (private)			
	Composting toilet (shared)					Composting toilet (shared)			
	<b>Other improved</b>					<b>Other improved</b>			
	Other					Other			
	Other					Other			
Ciel ouvert	<b>No facility, bush, field</b>	2.3	21.8		Pas de toilette Nature	<b>No facility, bush, field</b>	1.0	15.9	
	<b>Other unimproved</b>	0.0	0.0			<b>Other unimproved</b>			
Autre	Other	0.0	0.0			Other			
	Other					Other			
Missing	<b>DK/missing information</b>	0.0	0.2		Other/ND	<b>DK/missing information</b>	0.5	0.4	
	<b>Total</b>	100.0	100.0			<b>Total</b>	100.0	100.0	
<b>Calculations</b>					<b>Calculations</b>				
	Latrine sommair adjusted for trou ouvert based on MICS00	21.5	41.1			Latrine sommair adjusted for trou ouvert based on MICS00	33.6	49.2	
<b>Estimations</b>					<b>Estimations</b>				
	50% of remaining latrines sommair considered improved	10.8	20.5			50% of remaining latrines sommair considered improved	16.8	24.6	
	SC, based on MICS06	1.2	0.0			SC, based on MICS06	1.6	0.0	
<b>Access to improved sanitation :</b>		<b>84%</b>	<b>41%</b>		<b>Access to improved sanitation :</b>		<b>77%</b>	<b>40%</b>	
<b>Access to sewerage connections :</b>		<b>1%</b>	<b>0%</b>		<b>Access to sewerage connections :</b>		<b>2%</b>	<b>0%</b>	
Used for the estimates:		Yes	Yes		Used for the estimates:		Yes	Yes	
Used for the estimates:		Yes	Yes		Used for the estimates:		Yes	Yes	
<b>Ratios</b>					<b>Ratios</b>				
	Shared improved facilities/all improved facilities					Shared improved facilities/all improved facilities			
	Improved latrine / All latrines	71%	26%			Improved latrine / All latrines	53%	17%	
	Covered dry latrines / All dry latrines	71%	26%			Covered dry latrines / All dry latrines	53%	17%	
	VIP / All latrines					VIP / All latrines			
	Traditional latrines / All latrines					Traditional latrines / All latrines			
	Improved + traditional latrines / All latrines					Improved + traditional latrines / All latrines			
	Sewerage connection among flush/pour flush					Sewerage connection among flush/pour flush			
	Sewerage connection among flush					Sewerage connection among flush			
	Number of people covered by the survey					Number of people covered by the survey			
	Number of households covered by the survey					Number of households covered by the survey			
	Total population					Total population			
<b>Comments</b>					<b>Comments</b>				

Use of sanitation facilities		MICS00			Use of sanitation facilities			DHS04		
Enquête à Indicateurs Multiples		Cameroon			Demographic and Health Survey			Cameroon		
Multiple Indicator Cluster Survey		2000						2004		
Original denomination	Classification	Urban	Rural	Total	Original denomination	Classification	Urban	Rural	Total	
	<b>Flush and pour flush</b>	18.3	0.7			<b>Flush and pour flush</b>	14.1	0.8		
	to piped sewer system					to piped sewer system				
	to septic tank					to septic tank				
	to pit					to pit				
	to unknown place/ not sure/DK	3.1	0.2			to unknown place/ not sure/DK				
	to elsewhere					to elsewhere				
Chasse eau avec égouts ou fosse	<b>Flush/toilets</b>	15.2	0.5		Chasse d'eau	<b>Flush/toilets</b>	14.1	0.8		
	to piped sewer system					to piped sewer system				
	to septic tank					to septic tank				
	to pit					to pit				
	to unknown place/ not sure/DK					to unknown place/ not sure/DK				
	to elsewhere					to elsewhere				
	<b>Private flush/toilet</b>					<b>Private flush/toilet</b>				
	to piped sewer system					to piped sewer system				
	to septic tank					to septic tank				
	to pit					to pit				
	to unknown place/ not sure/DK					to unknown place/ not sure/DK				
	to elsewhere					to elsewhere				
	<b>Public/shared flush/toilet</b>					<b>Public/shared flush/toilet</b>				
	to piped sewer system					to piped sewer system				
	to septic tank					to septic tank				
	to pit					to pit				
	to unknown place/ not sure/DK					to unknown place/ not sure/DK				
	to elsewhere					to elsewhere				
	<b>Latrines</b>	84.2	90.7			<b>Latrines</b>	84.2	86.0		
	<b>Pour flush latrines</b>	3.1	0.2			<b>Pour flush latrines</b>				
	to piped sewer system					to piped sewer system				
	to septic tank					to septic tank				
	to pit					to pit				
	to unknown place/ not sure/DK	3.1	0.2			to unknown place/ not sure/DK				
	to elsewhere					to elsewhere				
Latrines avec évacuation	<b>Private pour flush latrine</b>					<b>Private pour flush latrine</b>				
	to piped sewer system					to piped sewer system				
	to septic tank					to septic tank				
	to pit					to pit				
	to unknown place/ not sure/DK					to unknown place/ not sure/DK				
	to elsewhere					to elsewhere				
	<b>Public/shared pour flush latrine</b>					<b>Public/shared pour flush latrine</b>				
	to piped sewer system					to piped sewer system				
	to septic tank					to septic tank				
	to pit					to pit				
	to unknown place/ not sure/DK					to unknown place/ not sure/DK				
	to elsewhere					to elsewhere				
	<b>Dry latrines</b>	81.1	90.5			<b>Dry latrines</b>	84.2	86.0		
	<b>Improved latrines</b>					<b>Improved latrines</b>	42.1	12.7		
Latrines améliorées à ventilation	Ventilated Improved Pit latrine	4.5	3.6		Latrines améliorées	Ventilated Improved Pit latrine				
	Pit latrine with slab/covered latrine					Pit latrine with slab/covered latrine	42.1	12.7		
Latrines traditionnelles	Traditional latrine	67.6	62.4			Traditional latrine				
Trou ouvert	Pit latrine without slab/open pit	9.0	24.5			Pit latrine without slab/open pit				
	Hanging toilet/hanging latrine					Hanging toilet/hanging latrine				
	Bucket latrine					Bucket latrine				
	Other				Latrines rudimentaires	Other	42.1	73.3		
	<b>Private Latrines</b>					<b>Private Latrines</b>				
	Ventilated Improved Pit latrine					Ventilated Improved Pit latrine				
	Pit latrine with slab/covered latrine					Pit latrine with slab/covered latrine				
	Traditional latrine					Traditional latrine				
	Pit latrine without slab/open pit					Pit latrine without slab/open pit				
	Hanging toilet/hanging latrine					Hanging toilet/hanging latrine				
	Bucket latrine					Bucket latrine				
	Other					Other				
	<b>Public/shared Latrines</b>					<b>Public/shared Latrines</b>				
	Ventilated Improved Pit latrine					Ventilated Improved Pit latrine				
	Pit latrine with slab/covered latrine					Pit latrine with slab/covered latrine				
	Traditional latrine					Traditional latrine				
	Pit latrine without slab/open pit					Pit latrine without slab/open pit				
	Hanging toilet/hanging latrine					Hanging toilet/hanging latrine				
	Bucket latrine					Bucket latrine				
	Other					Other				
	<b>Composting toilets</b>					<b>Composting toilets</b>				
	Composting toilet (private)					Composting toilet (private)				
	Composting toilet (shared)					Composting toilet (shared)				
	<b>Other improved</b>					<b>Other improved</b>				
	Other					Other				
	Other					Other				
	<b>No facility, bush, field</b>				Pas de toilettes/nature	<b>No facility, bush, field</b>	1.7	13.0		
	<b>Other unimproved</b>				Autre	<b>Other unimproved</b>	0.1	0.1		
	Other					Other	0.1	0.1		
	Other					Other				
	<b>DK/missing information</b>					<b>DK/missing information</b>				
	<b>Total</b>	99.4	91.2			<b>Total</b>	100.1	99.9		
<b>Calculations</b>					<b>Calculations</b>					
	Proportion latrines traditionnelles/Lat. Trad. + trou ouvert	88%	72%			Latrines améliorées ajustées pour trou ouvert basé sur MICS00	37.2	52.6		
<b>Estimations</b>					<b>Estimations</b>					
	Proportion de latrine améliorée basée sur DHS98	42.7	31.2			50% of remaining latrines sommaire considéré amélioré	18.6	26.3		
	50% of remaining latrines without trou ouvert considéré amélioré	16.3	17.5							
	SC, based on MICS06	1.6	0.0			SC, based on MICS06	1.2	0.0		
<b>Access to improved sanitation :</b>		<b>77%</b>	<b>49%</b>		<b>Access to improved sanitation :</b>		<b>75%</b>	<b>40%</b>		
<b>Access to sewerage connections :</b>		<b>2%</b>	<b>0%</b>		<b>Access to sewerage connections :</b>		<b>1%</b>	<b>0%</b>		
Used for the estimates:		Yes	Yes		Used for the estimates:		Yes	Yes		
Used for the estimates:		Yes	Yes		Used for the estimates:		Yes	Yes		
<b>Ratios</b>	Shared improved facilities/all improved facilities				<b>Ratios</b>	Shared improved facilities/all improved facilities	34.0%	27.2%		
	Improved latrine / All latrines					Improved latrine / All latrines	50%	15%		
	Covered dry latrines / All dry latrines					Covered dry latrines / All dry latrines	50%	15%		
	VIP / All latrines	6%	4%			VIP / All latrines				
	Traditional latrines / All latrines	80%	69%			Traditional latrines / All latrines				
	Open pit / Dry latrine	11%	27%			Improved + traditional latrines / All latrines				
	Sewerage connection among flush/pour flush					Sewerage connection among flush/pour flush				
	Sewerage connection among flush					Sewerage connection among flush				
	Number of people covered by the survey					Number of people covered by the survey				
	Number of households covered by the survey					Number of households covered by the survey				
	Total population					Total population				
<b>Comments</b>					<b>Comments</b>					



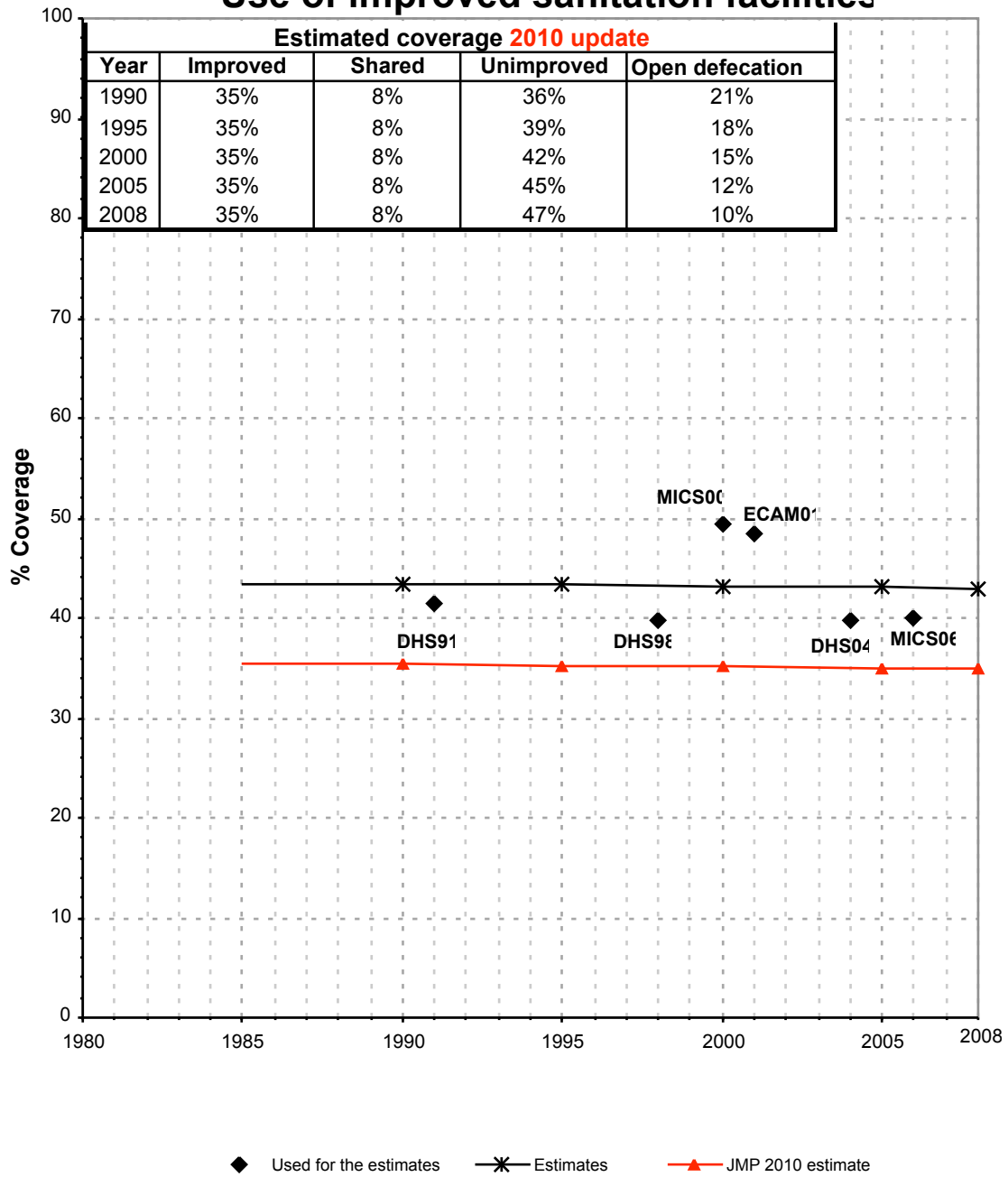
Cameroon			SANITATION															
			URBAN								RURAL							
			Sewer connection		Total		Open defecation		Shared		Sewer connection		Total		Open defecation		Shared	
Source	Code	Year	Used	Not used	Used	Not used	Used	Not used	Used	Not used	Used	Not used	Used	Not used	Used	Not used	Used	Not used
Demographic and Health Survey	DHS91	1991	1.2		84.1		2.3				0.0		41.3		21.8			
Demographic and Health Survey	DHS98	1998	1.6		77.2		1.0				0.0		39.8		15.9			
Enquête à Indicateurs Multiples	MICS00	2000	1.6		77.2						0.0		49.4					
Demographic and Health Survey	DHS04	2004	1.2		74.8		1.7		34.0		0.0		39.8		13.0		27.2	
Enquête à Indicateurs Multiples	MICS06	2006	1.8		72.5		1.0		13.3		0.0		40.1		13.8		10.0	
ENQUETE CAMEROUNAISE AUPRES DES MENAGES	ECAM01	2001			85.9		0.4						48.3		10.3			

# Cameroon - urban - Use of improved sanitation facilities



■ Used for the estimates    \* Estimates    ▲ JMP 2010 estimate

# Cameroon - rural - Use of improved sanitation facilities



# Sanitation

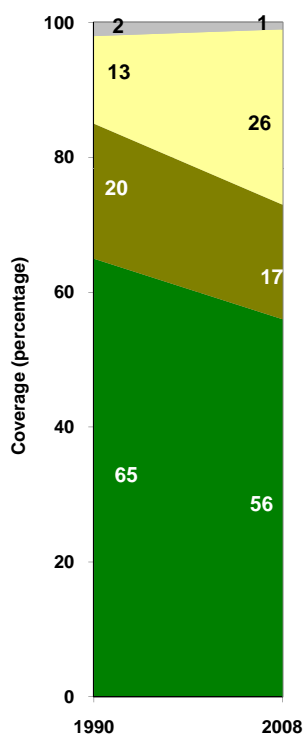
Cameroon	Sanitation coverage estimates					
	Urban (%)		Rural (%)		Total (%)	
	1990	2008	1990	2008	1990	2008
Improved facilities	65	56	35	35	47	47
Shared facilities	20	17	8	8	13	13
Unimproved facilities	13	26	36	47	27	35
Open defecation	2	1	21	10	13	5

Source: WHO/UNICEF JMP, 2010

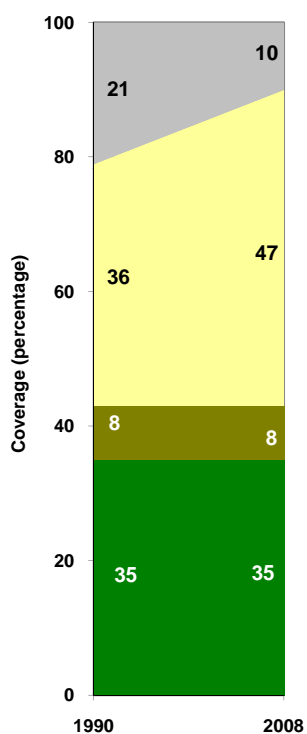
Cameroon	Urban		Rural		Total	
	1990	2008	1990	2008	1990	2008
Population (x1000)	4,981	10,840	7,252	8,248	12,233	19,088

Source: UN / Population Division, 2008

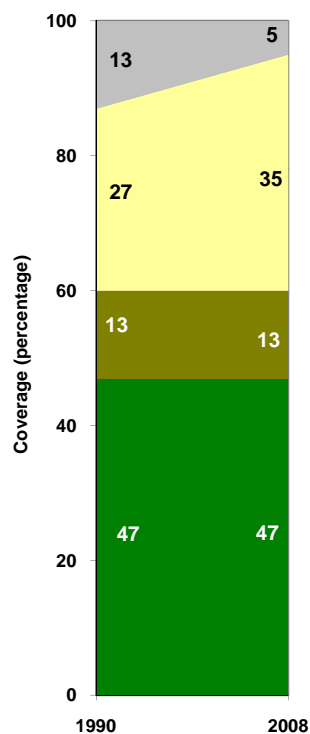
Urban sanitation trends



Rural sanitation trends



Total sanitation trends



■ Open defecation  
 ■ Unimproved facilities  
 ■ Shared facilities  
 ■ Improved facilities

■ Open defecation  
 ■ Unimproved facilities  
 ■ Shared facilities  
 ■ Improved facilities

■ Open defecation  
 ■ Unimproved facilities  
 ■ Shared facilities  
 ■ Improved facilities