

**WHO / UNICEF**

**Joint Monitoring Programme**  
for Water Supply and Sanitation

Estimates for the use of

**Improved Drinking-Water Sources  
and Improved Sanitation Facilities**

Updated March 2010

[childinfo.org](http://childinfo.org)

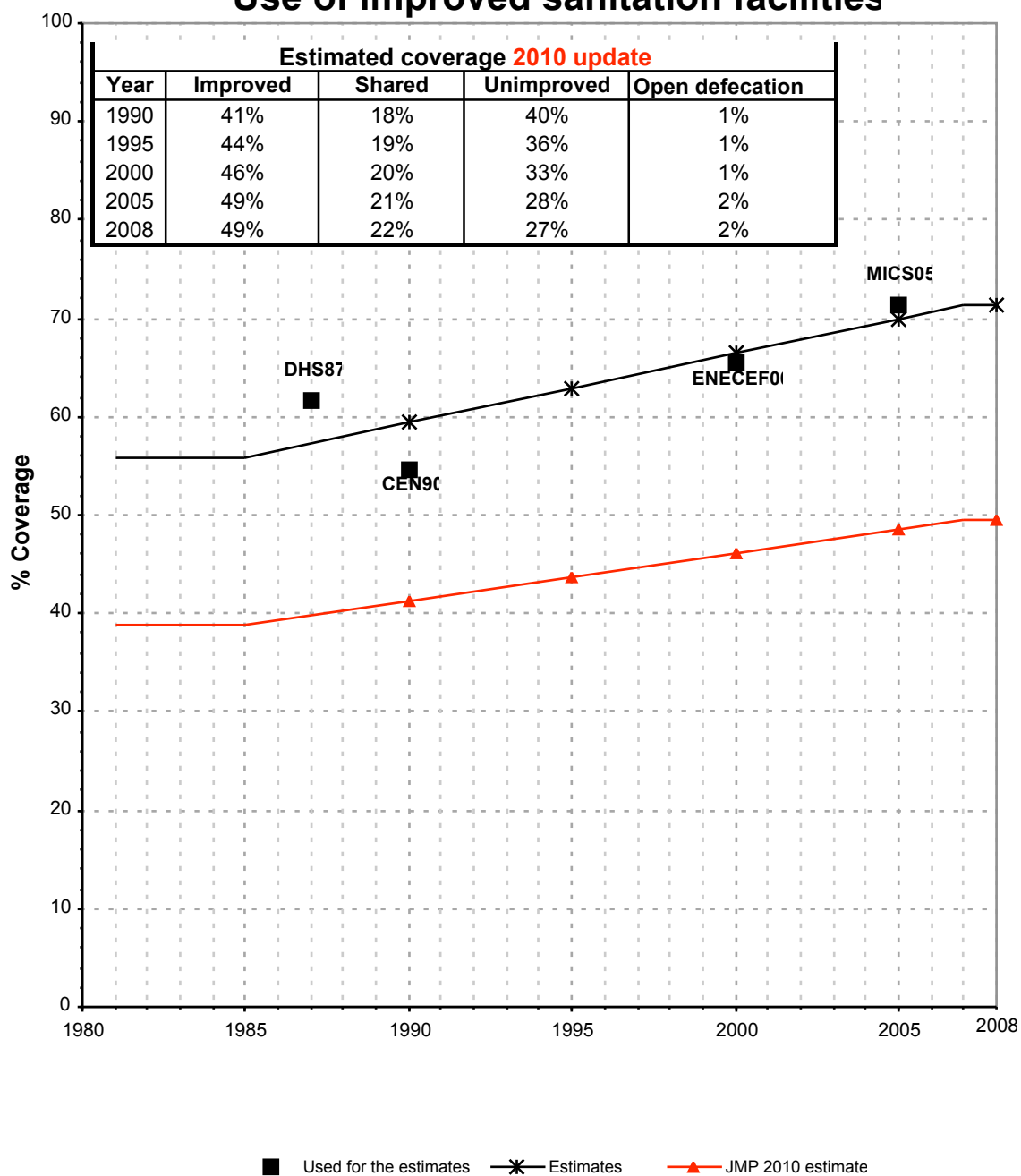




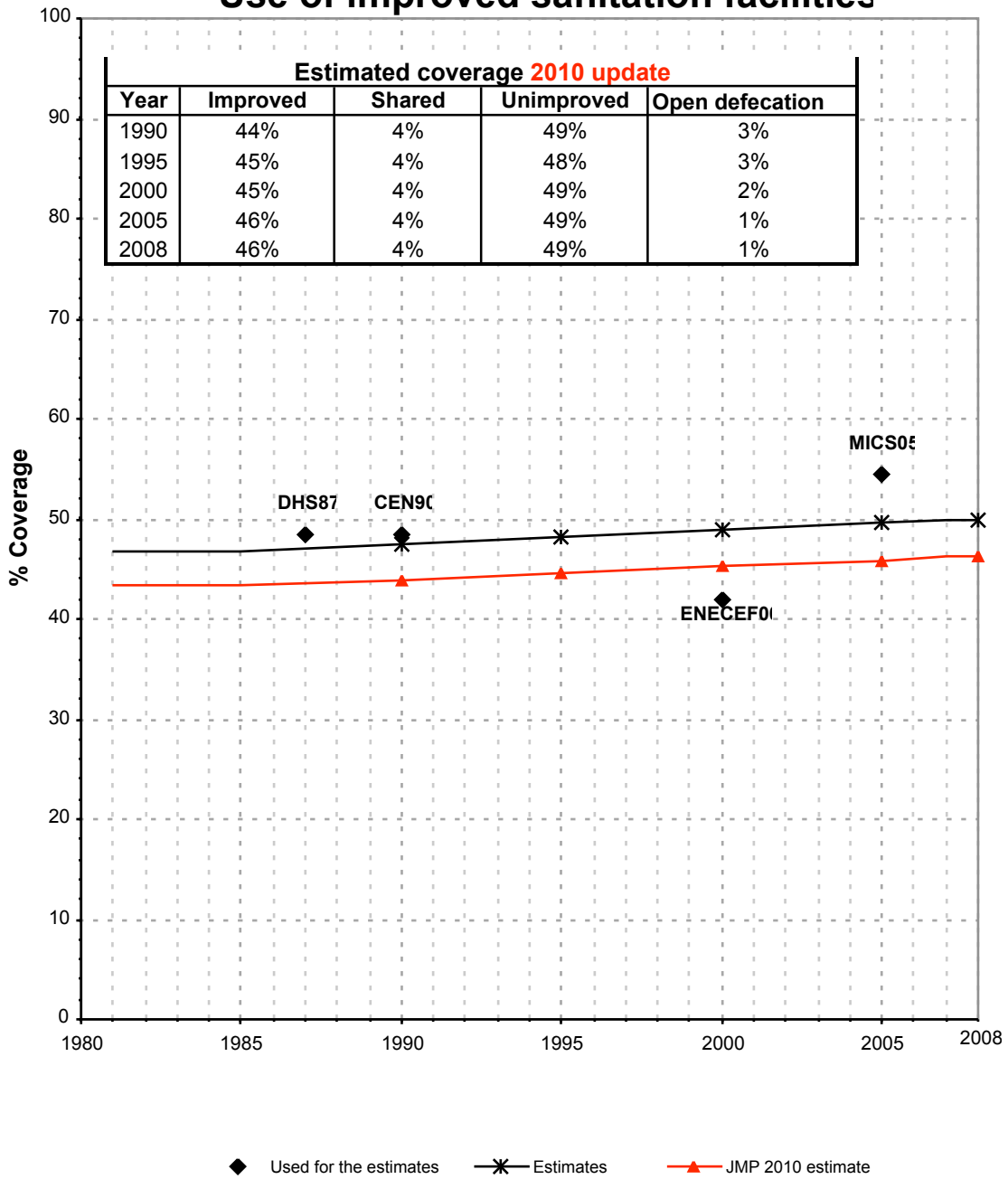


Burundi			SANITATION															
			URBAN								RURAL							
			Sewer connection		Total		Open defecation		Shared		Sewer connection		Total		Open defecation		Shared	
Source	Code	Year	Used	Not used	Used	Not used	Used	Not used	Used	Not used	Used	Not used	Used	Not used	Used	Not used	Used	Not used
Demographic and Health Survey 1987.	DHS87	1987	18.3		61.6		0.9				0.3		48.4		3.7			
Census	CEN90	1990			54.6								48.4					
Etude Nationale sur les Conditions de Vie des Population	ENCV98	1998																
Global Water Supply and Sanitation Assessment 2000.	JMP99	1999		4.4		79.0					0.0		50.0					
Enquete Nationale d'Evaluation des Conditions de vie de l'enfant et de la Femme	ENECEF00	2000	19.4		65.7		2.4				0.7		42.0		2.8			
Multiple Indicator Cluster Survey	MICS05	2005	11.7		71.4		0.8		30.7		0.1		54.6		1.0		7.6	

# Burundi - urban - Use of improved sanitation facilities



# Burundi - rural - Use of improved sanitation facilities



# Sanitation

Burundi	Sanitation coverage estimates					
	Urban (%)		Rural (%)		Total (%)	
	1990	2008	1990	2008	1990	2008
Improved facilities	41	49	44	46	44	46
Shared facilities	18	22	4	4	5	6
Unimproved facilities	40	27	49	49	48	47
Open defecation	1	2	3	1	3	1

Source: WHO/UNICEF JMP, 2010

Burundi	Urban		Rural		Total	
	1990	2008	1990	2008	1990	2008
Population (x1000)	356	838	5,325	7,236	5,681	8,074

Source: UN / Population Division, 2008

