

**WHO / UNICEF**

**Joint Monitoring Programme**  
for Water Supply and Sanitation

Estimates for the use of

**Improved Drinking-Water Sources  
and Improved Sanitation Facilities**

Updated March 2010

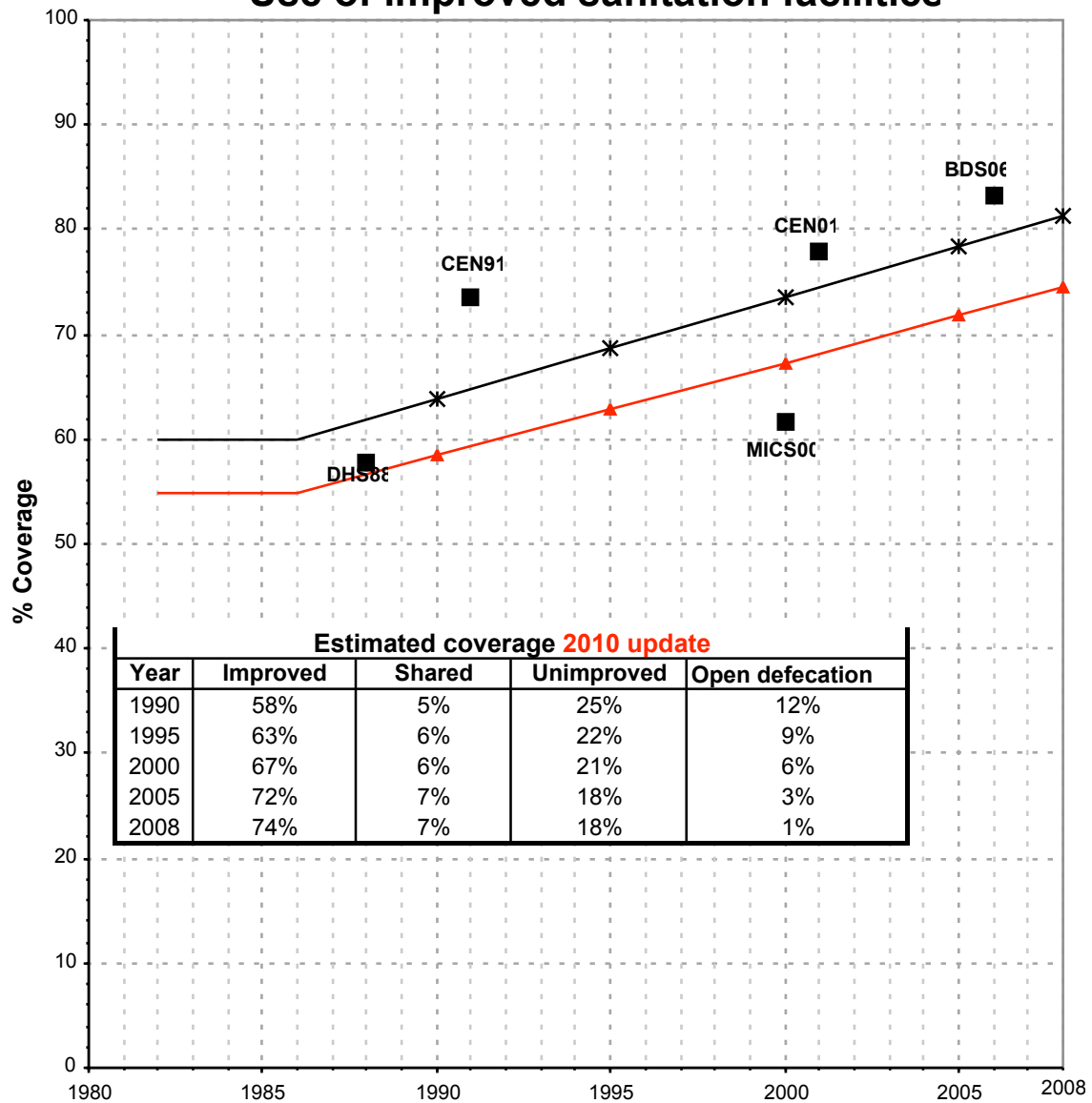
[childinfo.org](http://childinfo.org)

Use of sanitation facilities		DHS88		Botswana		Use of sanitation facilities		CEN91		Botswana					
Demographic and Health Survey				1988				Census as recorded in the Global Water Supply and Sanitation Assessment 2000				1991			
Original denomination	Classification	Urban	Rural	Total	Original denomination	Classification	Urban	Rural	Total	Original denomination	Classification	Urban	Rural	Total	
	<b>Flush and pour flush</b>	29.8	2.5			<b>Flush and pour flush</b>	47.0	1.6			<b>Flush and pour flush</b>	34.0	0.6		
	to piped sewer system					to piped sewer system					to piped sewer system				
	to septic tank					to septic tank					to septic tank				
	to pit					to pit					to pit				
	to unknown place/ not sure/DK					to unknown place/ not sure/DK					to unknown place/ not sure/DK				
	to elsewhere					to elsewhere					to elsewhere				
	<b>Flush/toilets</b>	29.8	2.5			<b>Flush/toilets</b>	47.0	1.6			<b>Flush/toilets</b>	34.0	0.6		
	to piped sewer system					to piped sewer system					to piped sewer system				
	to septic tank					to septic tank					to septic tank				
	to pit					to pit					to pit				
	to unknown place/ not sure/DK					to unknown place/ not sure/DK					to unknown place/ not sure/DK				
	to elsewhere					to elsewhere					to elsewhere				
Own flush	<b>Private flush/toilet</b>	28.6	2.0			<b>Private flush/toilet</b>					<b>Private flush/toilet</b>				
	to piped sewer system					to piped sewer system					to piped sewer system				
	to septic tank					to septic tank					to septic tank				
	to pit					to pit					to pit				
	to unknown place/ not sure/DK					to unknown place/ not sure/DK					to unknown place/ not sure/DK				
	to elsewhere					to elsewhere					to elsewhere				
Neighbour's & communal toilet	<b>Public/shared flush/toilet</b>	1.2	0.5			<b>Public/shared flush/toilet</b>					<b>Public/shared flush/toilet</b>				
	to piped sewer system					to piped sewer system					to piped sewer system				
	to septic tank					to septic tank					to septic tank				
	to pit					to pit					to pit				
	to unknown place/ not sure/DK					to unknown place/ not sure/DK					to unknown place/ not sure/DK				
	to elsewhere					to elsewhere					to elsewhere				
	<b>Latrines</b>	55.9	42.2			<b>Latrines</b>	53.0	54.4			<b>Latrines</b>	53.0	54.4		
	<b>Pour flush latrines</b>					<b>Pour flush latrines</b>					<b>Pour flush latrines</b>				
	to piped sewer system					to piped sewer system					to piped sewer system				
	to septic tank					to septic tank					to septic tank				
	to pit					to pit					to pit				
	to unknown place/ not sure/DK					to unknown place/ not sure/DK					to unknown place/ not sure/DK				
	to elsewhere					to elsewhere					to elsewhere				
	<b>Private pour flush latrine</b>					<b>Private pour flush latrine</b>					<b>Private pour flush latrine</b>				
	to piped sewer system					to piped sewer system					to piped sewer system				
	to septic tank					to septic tank					to septic tank				
	to pit					to pit					to pit				
	to unknown place/ not sure/DK					to unknown place/ not sure/DK					to unknown place/ not sure/DK				
	to elsewhere					to elsewhere					to elsewhere				
	<b>Public/shared pour flush latrine</b>					<b>Public/shared pour flush latrine</b>					<b>Public/shared pour flush latrine</b>				
	to piped sewer system					to piped sewer system					to piped sewer system				
	to septic tank					to septic tank					to septic tank				
	to pit					to pit					to pit				
	to unknown place/ not sure/DK					to unknown place/ not sure/DK					to unknown place/ not sure/DK				
	to elsewhere					to elsewhere					to elsewhere				
	<b>Dry latrines</b>	55.9	42.2			<b>Dry latrines</b>	53.0	54.4			<b>Dry latrines</b>	53.0	54.4		
	<b>Improved latrines</b>					<b>Improved latrines</b>					<b>Improved latrines</b>				
	Ventilated Improved Pit latrine					Ventilated Improved Pit latrine					Ventilated Improved Pit latrine				
	Pit latrine with slab/covered latrine					Pit latrine with slab/covered latrine					Pit latrine with slab/covered latrine				
	Traditional latrine	55.8	42.2		1 Pit Latrine	Traditional latrine	53.0	54.4			Traditional latrine	53.0	54.4		
	Pit latrine without slab/open pit					Pit latrine without slab/open pit					Pit latrine without slab/open pit				
	Hanging toilet/hanging latrine					Hanging toilet/hanging latrine					Hanging toilet/hanging latrine				
Paik/ bucket	Bucket latrine	0.1	0.0			Bucket latrine					Bucket latrine				
	Other					Other					Other				
	<b>Private Latrines</b>	51.7	34.5			<b>Private Latrines</b>					<b>Private Latrines</b>				
	Ventilated Improved Pit latrine					Ventilated Improved Pit latrine					Ventilated Improved Pit latrine				
	Pit latrine with slab/covered latrine					Pit latrine with slab/covered latrine					Pit latrine with slab/covered latrine				
	Traditional latrine	51.7	34.5			Traditional latrine					Traditional latrine				
	Pit latrine without slab/open pit					Pit latrine without slab/open pit					Pit latrine without slab/open pit				
	Hanging toilet/hanging latrine					Hanging toilet/hanging latrine					Hanging toilet/hanging latrine				
	Bucket latrine					Bucket latrine					Bucket latrine				
	Other					Other					Other				
	<b>Public/shared Latrines</b>	4.2	7.6			<b>Public/shared Latrines</b>					<b>Public/shared Latrines</b>				
	Ventilated Improved Pit latrine					Ventilated Improved Pit latrine					Ventilated Improved Pit latrine				
	Pit latrine with slab/covered latrine					Pit latrine with slab/covered latrine					Pit latrine with slab/covered latrine				
	Traditional latrine	4.2	7.6			Traditional latrine					Traditional latrine				
	Pit latrine without slab/open pit					Pit latrine without slab/open pit					Pit latrine without slab/open pit				
	Hanging toilet/hanging latrine					Hanging toilet/hanging latrine					Hanging toilet/hanging latrine				
	Bucket latrine					Bucket latrine					Bucket latrine				
	Other					Other					Other				
Neighbour's & communal latrine	<b>Composting toilets</b>					<b>Composting toilets</b>					<b>Composting toilets</b>				
	Composting toilet (private)					Composting toilet (private)					Composting toilet (private)				
	Composting toilet (shared)					Composting toilet (shared)					Composting toilet (shared)				
	<b>Other improved</b>					<b>Other improved</b>					<b>Other improved</b>				
	Other					Other					Other				
Bush	<b>No facility, bush, field</b>	14.3	55.2			<b>No facility, bush, field</b>					<b>No facility, bush, field</b>				
	<b>Other unimproved</b>	0.0	0.1			<b>Other unimproved</b>	0.0	44.0			<b>Other unimproved</b>	0.0	44.0		
	Other	0.0	0.1		Other	Other	0.0	44.0			Other	0.0	44.0		
	Other					Other					Other				
Missing information	<b>DK/missing information</b>	0.0	0.1			<b>DK/missing information</b>					<b>DK/missing information</b>				
	<b>Total</b>	100.0	100.0			<b>Total</b>	100.0	100.0			<b>Total</b>	100.0	100.0		
<b>Calculations</b>						<b>Calculations</b>					<b>Calculations</b>				
<b>Estimations</b>	50% of traditional latrines considered improved	27.9	21.1			<b>Estimations</b>	50% of traditional latrines considered improved	26.5	27.2		<b>Estimations</b>				
	SC, based on CEN91	21.6	0.9												
	<b>Access to improved sanitation :</b>	<b>58%</b>	<b>24%</b>			<b>Access to improved sanitation :</b>	<b>73%</b>	<b>29%</b>			<b>Access to improved sanitation :</b>	<b>73%</b>	<b>29%</b>		
	<b>Access to sewerage connections :</b>	<b>22%</b>	<b>1%</b>			<b>Access to sewerage connections :</b>	<b>34%</b>	<b>1%</b>			<b>Access to sewerage connections :</b>	<b>34%</b>	<b>1%</b>		
	Used for the estimates	Yes	Yes			Used for the estimates	Yes	Yes			Used for the estimates	Yes	Yes		
	Used for the estimates	Yes	Yes			Used for the estimates	Yes	Yes			Used for the estimates	Yes	Yes		
<b>Ratios</b>	Shared improved facilities/all improved facilities					<b>Ratios</b>	Shared improved facilities/all improved facilities				<b>Ratios</b>				
	Improved latrine / All latrines					Improved latrine / All latrines					Improved latrine / All latrines				
	Covered dry latrines / All dry latrines					Covered dry latrines / All dry latrines					Covered dry latrines / All dry latrines				
	VIP / All latrines					VIP / All latrines					VIP / All latrines				
	Traditional latrines / All latrines	100%	100%			Traditional latrines / All latrines	100%	100%			Traditional latrines / All latrines	100%	100%		
	Improved + traditional latrines / All latrines					Improved + traditional latrines / All latrines					Improved + traditional latrines / All latrines				
	Sewerage connection among flush/pour flush					Sewerage connection among flush/pour flush	72.3	37.5			Sewerage connection among flush/pour flush	72.3	37.5		
	Sewerage connection among flush					Sewerage connection among flush	72.3	37.5			Sewerage connection among flush	72.3	37.5		
	Number of people covered by the survey					Number of people covered by the survey					Number of people covered by the survey				
	Number of households covered by the survey					Number of households covered by the survey					Number of households covered by the survey				
	Total population					Total population	606,328	720,468			Total population	606,328	720,468		
<b>Comments</b>						<b>Comments</b>					<b>Comments</b>				



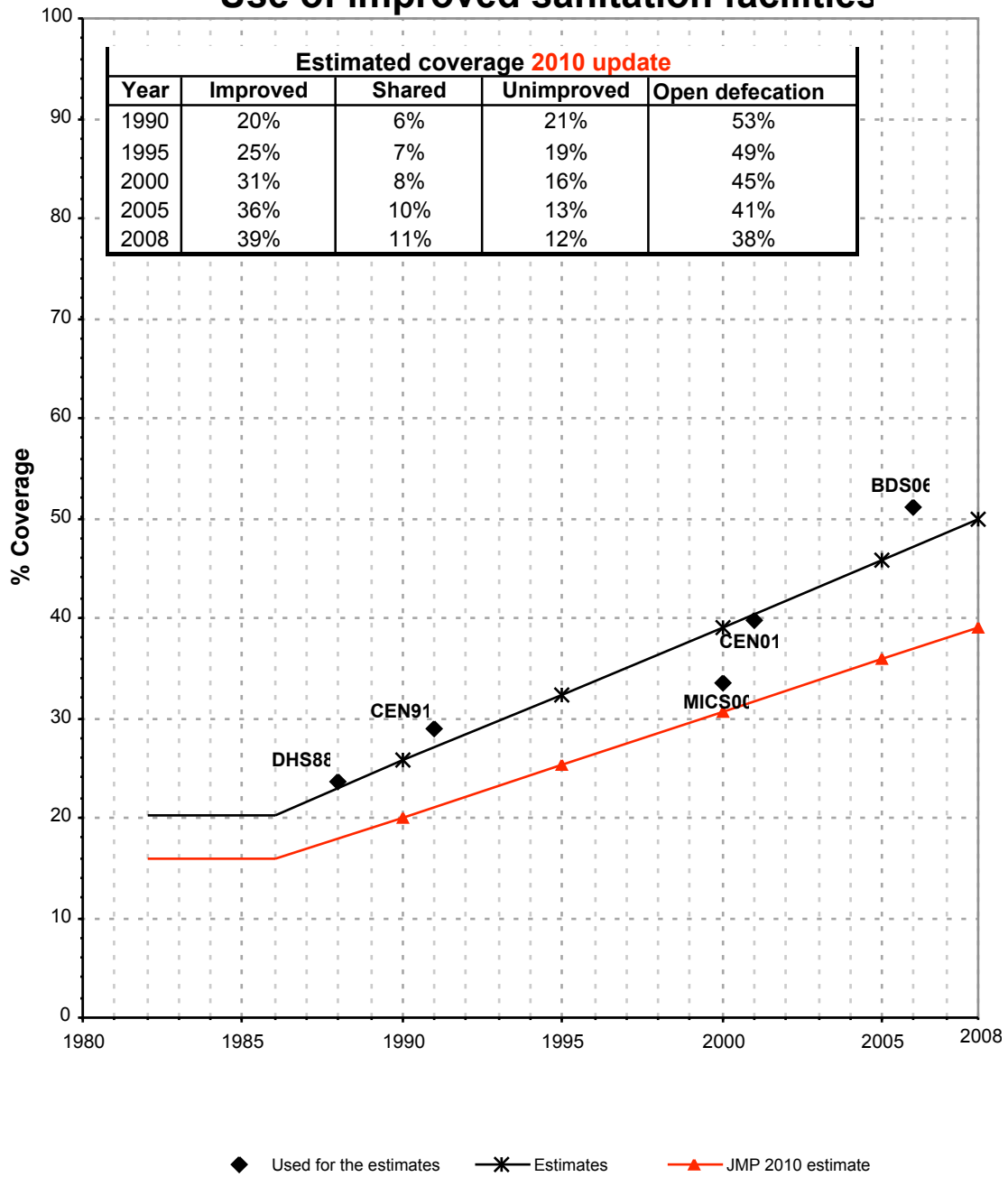
Botswana			SANITATION															
			URBAN								RURAL							
			Sewer connection		Total		Open defecation		Shared		Sewer connection		Total		Open defecation		Shared	
Source	Code	Year	Used	Not used	Used	Not used	Used	Not used	Used	Not used	Used	Not used	Used	Not used	Used	Not used	Used	Not used
Demographic and Health Survey	DHS88	1988	21.6		57.7		14.3				0.9		23.6		55.2			
Census	CEN91	1991	34.0		73.5						0.6		28.8					
Global Water Supply and Sanitation Assessment 2000.	JMP99	1999		34.0		87.0						5.0		33.0				
Multiple Indicator Cluster Survey	MICS00	2000	19.2		61.7		3.1		5.6		3.2		33.6		41.0		15.2	
Census	CEN01	2001			78.0		4.3		13.9				39.7		47.6		32.9	
Botswana Demographic Survey, 2006		2006			83.3		5.1		5.9				51.0		39.5		17.0	

# Botswana - urban - Use of improved sanitation facilities



■ Used for the estimates    \* Estimates    ▲ JMP 2010 estimate

# Botswana - rural - Use of improved sanitation facilities



# Sanitation

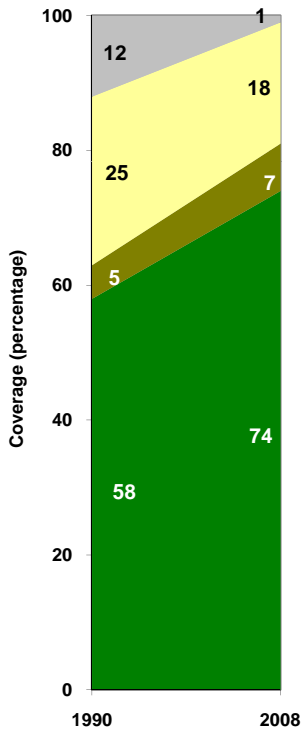
Botswana	Sanitation coverage estimates					
	Urban (%)		Rural (%)		Total (%)	
	1990	2008	1990	2008	1990	2008
Improved facilities	58	74	20	39	36	60
Shared facilities	5	7	6	11	6	9
Unimproved facilities	25	18	21	12	22	15
Open defecation	12	1	53	38	36	16

Source: WHO/UNICEF JMP, 2010

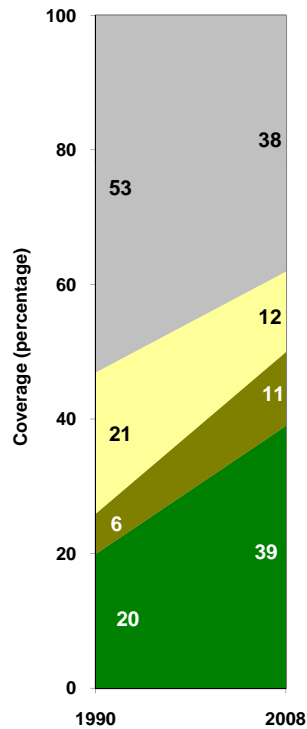
Botswana	Urban		Rural		Total	
	1990	2008	1990	2008	1990	2008
Population (x1000)	567	1,146	785	775	1,352	1,921

Source: UN / Population Division, 2008

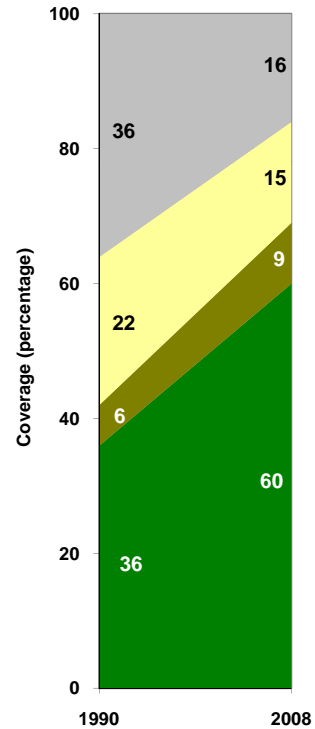
Urban sanitation trends



Rural sanitation trends



Total sanitation trends



- Improved facilities
- Shared facilities
- Unimproved facilities
- Open defecation

- Improved facilities
- Shared facilities
- Unimproved facilities
- Open defecation

- Improved facilities
- Shared facilities
- Unimproved facilities
- Open defecation