

WHO / UNICEF

Joint Monitoring Programme
for Water Supply and Sanitation

Estimates for the use of

**Improved Drinking-Water Sources
and Improved Sanitation Facilities**

Updated March 2010

childinfo.org

Use of sanitation facilities		DHS94			Bangladesh		Use of sanitation facilities		MICS94			Bangladesh	
Demographic and Health Survey					1994		Multiple Indicator Cluster Survey					1994	
Original denomination	Classification	Urban	Rural	Total	Original denomination	Classification	Urban	Rural	Total				
	Flush and pour flush	72.2	19.0	25.0		Flush and pour flush	47.7	7.4	11.4				
	to piped sewer system					to piped sewer system							
	to septic tank	49.4	4.2	9.3		to septic tank							
	to pit	22.8	14.8	15.7		to pit							
	to unknown place/ not sure/DK to elsewhere					to unknown place/ not sure/DK to elsewhere							
	Flush/toilets	49.4	4.2	9.3		Flush/toilets							
	to piped sewer system					to piped sewer system							
	to septic tank	49.4	4.2	9.3		to septic tank							
	to pit					to pit							
	to unknown place/ not sure/DK to elsewhere					to unknown place/ not sure/DK to elsewhere							
	Private flush/toilet					Private flush/toilet							
	to piped sewer system					to piped sewer system							
	to septic tank					to septic tank							
	to pit					to pit							
	to unknown place/ not sure/DK to elsewhere					to unknown place/ not sure/DK to elsewhere							
	Public/shared flush/toilet					Public/shared flush/toilet							
	to piped sewer system					to piped sewer system							
	to septic tank					to septic tank							
	to pit					to pit							
	to unknown place/ not sure/DK to elsewhere					to unknown place/ not sure/DK to elsewhere							
	Latrines	45.2	62.1	60.1		Latrines	32.6	66.1	68.8				
	Pour flush latrines	22.8	14.8	15.7	Water Seal	Pour flush latrines	47.7	7.4	11.4				
	to piped sewer system					to piped sewer system							
	to septic tank					to septic tank							
	to pit	22.8	14.8	15.7		to pit							
	to unknown place/ not sure/DK to elsewhere					to unknown place/ not sure/DK to elsewhere							
	Private pour flush latrine					Private pour flush latrine							
	to piped sewer system					to piped sewer system							
	to septic tank					to septic tank							
	to pit					to pit							
	to unknown place/ not sure/DK to elsewhere					to unknown place/ not sure/DK to elsewhere							
	Public/shared pour flush latrine					Public/shared pour flush latrine							
	to piped sewer system					to piped sewer system							
	to septic tank					to septic tank							
	to pit					to pit							
	to unknown place/ not sure/DK to elsewhere					to unknown place/ not sure/DK to elsewhere							
	Dry latrines	22.4	47.3	44.4		Dry latrines	45.9	58.7	57.4				
	Improved latrines					Improved latrines							
	Ventilated Improved Pit latrine					Ventilated Improved Pit latrine							
	Pit latrine with slab/covered latrine					Pit latrine with slab/covered latrine							
	Traditional latrine	8.4	16.6	15.7	Pit	Traditional latrine	28.9	22.8	23.4				
	Pit latrine without slab/open pit	9.1	20.7	19.3		Pit latrine without slab/open pit							
	Hanging toilet/hanging latrine	4.9	10.0	9.4	Hanging	Hanging toilet/hanging latrine	17.0	35.9	34.0				
	Bucket latrine					Bucket latrine							
	Other					Other							
	Private Latrines					Private Latrines							
	Ventilated Improved Pit latrine					Ventilated Improved Pit latrine							
	Pit latrine with slab/covered latrine					Pit latrine with slab/covered latrine							
	Traditional latrine					Traditional latrine							
	Pit latrine without slab/open pit					Pit latrine without slab/open pit							
	Hanging toilet/hanging latrine					Hanging toilet/hanging latrine							
	Bucket latrine					Bucket latrine							
	Other					Other							
	Public/shared Latrines					Public/shared Latrines							
	Ventilated Improved Pit latrine					Ventilated Improved Pit latrine							
	Pit latrine with slab/covered latrine					Pit latrine with slab/covered latrine							
	Traditional latrine					Traditional latrine							
	Pit latrine without slab/open pit					Pit latrine without slab/open pit							
	Hanging toilet/hanging latrine					Hanging toilet/hanging latrine							
	Bucket latrine					Bucket latrine							
	Other					Other							
	Composting toilets					Composting toilets							
	Composting toilet (private)					Composting toilet (private)							
	Composting toilet (shared)					Composting toilet (shared)							
	Other improved					Other improved							
	Other					Other							
	Other					Other							
	No facility, bush, field	4.8	33.4	30.2		No facility, bush, field							
	Other unimproved	0.6	0.4	0.4		Other unimproved	6.8	34.8	32.0				
	Other	0.6	0.4	0.4	Other	Other	6.8	34.8	32.0				
	Other					Other							
	DK/missing information					DK/missing information							
	Total	100.0	100.1	100.0		Total	100.4	100.9	100.8				
						Estimated No facility (ratio from DHS94)							
Calculations					Calculations								
	Estimated improved pit latrines based on MICS06	15.9	35.1			Estimated improved pit latrines based on MICS06	32.5	43.6					
Estimations					Estimations								
	SC, based on ratio from MICS06	14.6	0.3			SC, based on ratio from MICS06	9.6	0.1					
	Access to improved sanitation : 88% 54%					Access to improved sanitation : 80% 51%							
	Access to sewerage connections : 15% 0%					Access to sewerage connections : 10% 0%							
	Used for the estimates	Yes	Yes			Used for the estimates	Yes	Yes					
	Used for the estimates	Yes	Yes			Used for the estimates	Yes	Yes					
Ratios	Shared improved facilities/all improved facilities					Shared improved facilities/all improved facilities							
	Improved latrine / All latrines	50%	24%	26%		Improved latrine / All latrines	51%	11%	17%				
	Covered dry latrines / All dry latrines					Covered dry latrines / All dry latrines							
	VIP / All latrines					VIP / All latrines							
	Traditional latrines / All latrines	19%	27%	26%		Traditional latrines / All latrines	31%	34%	34%				
	Improved + traditional latrines / All latrines	69%	51%	52%		Improved + traditional latrines / All latrines	82%	46%	51%				
	Sewerage connection among flush/pour flush					Sewerage connection among flush/pour flush							
	Sewerage connection among flush					Sewerage connection among flush							
	Number of people covered by the survey					Number of people covered by the survey							
	Number of households covered by the survey					Number of households covered by the survey							
	Total population					Total population							
Comments					Comments								

Use of sanitation facilities		MICS95			Bangladesh			Use of sanitation facilities		MICS96			Bangladesh		
Multiple Indicator Cluster Survey					1995			Multiple Indicator Cluster Survey					1996		
Original denomination	Classification	Urban	Rural	Total	Original denomination	Classification	Urban	Rural	Total						
	Flush and pour flush	53.5	8.4	13.0		Flush and pour flush	52.1	8.6	13.3						
	to piped sewer system					to piped sewer system									
	to septic tank					to septic tank									
	to pit					to pit									
	to unknown place/ not sure/DK					to unknown place/ not sure/DK									
	to elsewhere					to elsewhere									
	Flush/toilets					Flush/toilets									
	to piped sewer system					to piped sewer system									
	to septic tank					to septic tank									
	to pit					to pit									
	to unknown place/ not sure/DK					to unknown place/ not sure/DK									
	to elsewhere					to elsewhere									
	Private flush/toilet					Private flush/toilet									
	to piped sewer system					to piped sewer system									
	to septic tank					to septic tank									
	to pit					to pit									
	to unknown place/ not sure/DK					to unknown place/ not sure/DK									
	to elsewhere					to elsewhere									
	Public/shared flush/toilet					Public/shared flush/toilet									
	to piped sewer system					to piped sewer system									
	to septic tank					to septic tank									
	to pit					to pit									
	to unknown place/ not sure/DK					to unknown place/ not sure/DK									
	to elsewhere					to elsewhere									
	Latrines	93.3	69.6	71.9		Latrines	95.3	82.1	82.8						
Water Seal	Pour flush latrines	53.5	8.4	13.0	Water Seal	Pour flush latrines	52.1	8.6	13.3						
	to piped sewer system					to piped sewer system									
	to septic tank					to septic tank									
	to pit					to pit									
	to unknown place/ not sure/DK					to unknown place/ not sure/DK									
	to elsewhere					to elsewhere									
	Private pour flush latrine					Private pour flush latrine									
	to piped sewer system					to piped sewer system									
	to septic tank					to septic tank									
	to pit					to pit									
	to unknown place/ not sure/DK					to unknown place/ not sure/DK									
	to elsewhere					to elsewhere									
	Public/shared pour flush latrine					Public/shared pour flush latrine									
	to piped sewer system					to piped sewer system									
	to septic tank					to septic tank									
	to pit					to pit									
	to unknown place/ not sure/DK					to unknown place/ not sure/DK									
	to elsewhere					to elsewhere									
	Dry latrines	39.8	61.2	58.9		Dry latrines	43.2	73.5	69.5						
	Improved latrines					Improved latrines									
	Ventilated Improved Pit latrine					Ventilated Improved Pit latrine									
Pit	Pit latrine with slab/covered latrine	25.6	28.0	27.7	Pit	Pit latrine with slab/covered latrine	27.3	35.6	34.7						
	Traditional latrine					Traditional latrine									
	Pit latrine without slab/open pit					Pit latrine without slab/open pit									
Hanging	Hanging toilet/hanging latrine	14.2	33.2	31.2	Hanging	Hanging toilet/hanging latrine	15.9	37.9	34.8						
	Bucket latrine					Bucket latrine									
	Other					Other									
	Private Latrines					Private Latrines									
	Ventilated Improved Pit latrine					Ventilated Improved Pit latrine									
	Pit latrine with slab/covered latrine					Pit latrine with slab/covered latrine									
	Traditional latrine					Traditional latrine									
	Pit latrine without slab/open pit					Pit latrine without slab/open pit									
	Hanging toilet/hanging latrine					Hanging toilet/hanging latrine									
	Bucket latrine					Bucket latrine									
	Other					Other									
	Public/shared Latrines					Public/shared Latrines									
	Ventilated Improved Pit latrine					Ventilated Improved Pit latrine									
	Pit latrine with slab/covered latrine					Pit latrine with slab/covered latrine									
	Traditional latrine					Traditional latrine									
	Pit latrine without slab/open pit					Pit latrine without slab/open pit									
	Hanging toilet/hanging latrine					Hanging toilet/hanging latrine									
	Bucket latrine					Bucket latrine									
	Other					Other									
	Composting toilets					Composting toilets									
	Composting toilet (private)					Composting toilet (private)									
	Composting toilet (shared)					Composting toilet (shared)									
	Other improved					Other improved									
	Other					Other									
	Other					Other									
	No facility, bush, field					No facility, bush, field									
	Other unimproved	7.2	31.2	28.8		Other unimproved	5.3	19.5	18.0						
Other	Other	7.2	31.2	28.8	Other	Other	5.3	19.5	18.0						
	Other					Other									
	DK/missing information					DK/missing information									
	Total	100.5	100.8	100.7		Total	100.8	101.6	100.8						
Calculations					Calculations										
Estimations	Estimated improved pit latrines based on MICS06	28.2	45.4		Estimations	Estimated improved pit latrines based on MICS06	30.6	54.6							
	SC, based on ratio from MICS06	10.8	0.1			SC, based on ratio from MICS06	10.5	0.1							
	Access to improved sanitation :	82%	54%			Access to improved sanitation :	83%	63%							
	Access to sewerage connections :	11%	0%			Access to sewerage connections :	11%	0%							
	Used for the estimates	Yes	Yes			Used for the estimates	Yes	Yes							
	Used for the estimates	Yes	Yes			Used for the estimates	Yes	Yes							
Ratios	Shared improved facilities/all improved facilities				Ratios	Shared improved facilities/all improved facilities									
	Improved latrine / All latrines	57%	12%	18%		Improved latrine / All latrines	55%	10%	16%						
	Covered dry latrines / All dry latrines					Covered dry latrines / All dry latrines									
	VIP / All latrines					VIP / All latrines									
	Traditional latrines / All latrines	27%	40%	39%		Traditional latrines / All latrines	29%	43%	42%						
	Improved + traditional latrines / All latrines	85%	52%	57%		Improved + traditional latrines / All latrines	83%	54%	58%						
	Sewerage connection among flush/pour flush					Sewerage connection among flush/pour flush									
	Sewerage connection among flush					Sewerage connection among flush									
	Number of people covered by the survey					Number of people covered by the survey									
	Number of households covered by the survey					Number of households covered by the survey									
	Total population					Total population									
Comments					Comments										

Use of sanitation facilities		DHS97			SVRS98				
Demographic and Health Survey		Bangladesh			Bangladesh				
		1997			1998				
Original denomination	Classification	Urban	Rural	Total	Original denomination	Classification	Urban	Rural	Total
	Flush and pour flush	77.4	24.5	30.5		Flush and pour flush	77.7	7.9	
	to piped sewer system					to piped sewer system			
	to septic tank	50.8	4.3	9.6		to septic tank			
	to pit					to pit			
	to unknown place/ not sure/DK					to unknown place/ not sure/DK			
	to elsewhere					to elsewhere			
	Flush/toilets	50.8	4.3	9.6		Flush/toilets			
	to piped sewer system					to piped sewer system			
	to septic tank	50.8	4.3	9.6		to septic tank			
	to pit					to pit			
	to unknown place/ not sure/DK					to unknown place/ not sure/DK			
	to elsewhere					to elsewhere			
	Private flush/toilet					Private flush/toilet			
	to piped sewer system					to piped sewer system			
	to septic tank					to septic tank			
	to pit					to pit			
	to unknown place/ not sure/DK					to unknown place/ not sure/DK			
	to elsewhere					to elsewhere			
	Public/shared flush/toilet					Public/shared flush/toilet			
	to piped sewer system					to piped sewer system			
	to septic tank					to septic tank			
	to pit					to pit			
	to unknown place/ not sure/DK					to unknown place/ not sure/DK			
	to elsewhere					to elsewhere			
	Latrines	45.0	66.5	64.0		Latrines	82.3	71.6	
Water sealed/slab latrine	Pour flush latrines	26.6	20.2	20.9	Sanitary Latrine	Pour flush latrines	77.7	7.9	
	to piped sewer system					to piped sewer system			
	to septic tank					to septic tank			
	to pit					to pit			
	to unknown place/ not sure/DK					to unknown place/ not sure/DK			
	to elsewhere					to elsewhere			
	Private pour flush latrine					Private pour flush latrine			
	to piped sewer system					to piped sewer system			
	to septic tank					to septic tank			
	to pit					to pit			
	to unknown place/ not sure/DK					to unknown place/ not sure/DK			
	to elsewhere					to elsewhere			
	Public/shared pour flush latrine					Public/shared pour flush latrine			
	to piped sewer system					to piped sewer system			
	to septic tank					to septic tank			
	to pit					to pit			
	to unknown place/ not sure/DK					to unknown place/ not sure/DK			
	to elsewhere					to elsewhere			
	Dry latrines	18.4	46.3	43.1		Dry latrines	14.6	63.7	
	Improved latrines					Improved latrines			
	Ventilated Improved Pit latrine					Ventilated Improved Pit latrine			
	Pit latrine with slab/covered latrine					Pit latrine with slab/covered latrine			
Traditional pit latrine	Traditional latrine	5.6	13.6	12.7	Pit Latrine	Traditional latrine	0.0	30.7	
Open latrine	Pit latrine without slab/open pit	11.4	26.6	24.9		Pit latrine without slab/open pit			
Hanging latrine	Hanging toilet/hanging latrine	1.4	6.1	5.5		Hanging toilet/hanging latrine			
	Bucket latrine					Bucket latrine			
	Other				Kutcha Latrine	Other	14.6	33.0	
	Private Latrines					Private Latrines			
	Ventilated Improved Pit latrine					Ventilated Improved Pit latrine			
	Pit latrine with slab/covered latrine					Pit latrine with slab/covered latrine			
	Traditional latrine					Traditional latrine			
	Pit latrine without slab/open pit					Pit latrine without slab/open pit			
	Hanging toilet/hanging latrine					Hanging toilet/hanging latrine			
	Bucket latrine					Bucket latrine			
	Other					Other			
	Public/shared Latrines					Public/shared Latrines			
	Ventilated Improved Pit latrine					Ventilated Improved Pit latrine			
	Pit latrine with slab/covered latrine					Pit latrine with slab/covered latrine			
	Traditional latrine					Traditional latrine			
	Pit latrine without slab/open pit					Pit latrine without slab/open pit			
	Hanging toilet/hanging latrine					Hanging toilet/hanging latrine			
	Bucket latrine					Bucket latrine			
	Other					Other			
	Composting toilets					Composting toilets			
	Composting toilet (private)					Composting toilet (private)			
	Composting toilet (shared)					Composting toilet (shared)			
	Other improved					Other improved			
	Other					Other			
	Other					Other			
No facility/bush	No facility, bush, field	4.2	29.1	26.3	Open	No facility, bush, field	7.7	28.4	
	Other unimproved	0.1	0.2	0.2		Other unimproved			
	Other	0.1	0.2	0.2		Other			
	Other					Other			
	DK/missing information					DK/missing information			
	Total	100.1	100.1	100.1		Total	100.0	100.0	
Calculations					Calculations				
	Estimated improved pit latrines based on MICS06	13.0	34.4			Estimated improved pit latrines based on MICS06	10.4	47.3	
Estimations					Estimations				
	SC, based on ratio from MICS06	15.6	0.4			SC, based on ratio from MICS06	15.7	0.1	
Access to improved sanitation : 90% 59%					Access to improved sanitation : 88% 55%				
Access to sewerage connections : 16% 0%					Access to sewerage connections : 16% 0%				
Used for the estimates		Yes	Yes		Used for the estimates		Yes	Yes	
Used for the estimates		Yes	Yes		Used for the estimates		Yes	Yes	
Ratios	Shared improved facilities/all improved facilities	59%	30%	33%	Ratios	Shared improved facilities/all improved facilities	84%	11%	
	Improved latrine / All latrines					Improved latrine / All latrines			
	Covered dry latrines / All dry latrines					Covered dry latrines / All dry latrines			
	VIP / All latrines					VIP / All latrines			
	Traditional latrines / All latrines	12%	20%	20%		Traditional latrines / All latrines	0%	43%	
	Improved + traditional latrines / All latrines	72%	51%	53%		Improved + traditional latrines / All latrines	84%	54%	
	Sewerage connection among flush/pour flush					Sewerage connection among flush/pour flush			
	Sewerage connection among flush					Sewerage connection among flush			
	Number of people covered by the survey					Number of people covered by the survey			
	Number of households covered by the survey					Number of households covered by the survey			
	Total population					Total population	34800	92600	
Comments					Comments				

Use of sanitation facilities		MICS99			Bangladesh			Use of sanitation facilities		JMP99			Bangladesh		
Multiple Indicator Cluster Survey					1999			Global Water Supply and Sanitation Assessment 2000.					1999		
								Water Supply and Sanitation Sector Questionnaire - 1999. Form 6 sent to WHO.							
Original denomination	Classification	Urban	Rural	Total	Original denomination	Classification	Urban	Rural	Total	Original denomination	Classification	Urban	Rural	Total	
	Flush and pour flush	44.5	8.3	12.1		Flush and pour flush	5.7	0.0			Flush and pour flush	5.7	0.0		
	to piped sewer system					to piped sewer system					to piped sewer system				
	to septic tank					to septic tank					to septic tank				
	to pit					to pit					to pit				
	to unknown place/ not sure/DK					to unknown place/ not sure/DK					to unknown place/ not sure/DK				
	to elsewhere					to elsewhere					to elsewhere				
	Flush/toilets					Flush/toilets					Flush/toilets				
	to piped sewer system					to piped sewer system					to piped sewer system				
	to septic tank					to septic tank					to septic tank				
	to pit					to pit					to pit				
	to unknown place/ not sure/DK					to unknown place/ not sure/DK					to unknown place/ not sure/DK				
	to elsewhere					to elsewhere					to elsewhere				
	Private flush/toilet					Private flush/toilet					Private flush/toilet				
	to piped sewer system					to piped sewer system					to piped sewer system				
	to septic tank					to septic tank					to septic tank				
	to pit					to pit					to pit				
	to unknown place/ not sure/DK					to unknown place/ not sure/DK					to unknown place/ not sure/DK				
	to elsewhere					to elsewhere					to elsewhere				
	Public/shared flush/toilet					Public/shared flush/toilet					Public/shared flush/toilet				
	to piped sewer system					to piped sewer system					to piped sewer system				
	to septic tank					to septic tank					to septic tank				
	to pit					to pit					to pit				
	to unknown place/ not sure/DK					to unknown place/ not sure/DK					to unknown place/ not sure/DK				
	to elsewhere					to elsewhere					to elsewhere				
	Latrines	97.7	78.0	80.1		Latrines					Latrines				
Water Seal	Pour flush latrines	44.5	8.3	12.1		Pour flush latrines					Pour flush latrines				
	to piped sewer system					to piped sewer system					to piped sewer system				
	to septic tank					to septic tank					to septic tank				
	to pit					to pit					to pit				
	to unknown place/ not sure/DK					to unknown place/ not sure/DK					to unknown place/ not sure/DK				
	to elsewhere					to elsewhere					to elsewhere				
	Private pour flush latrine					Private pour flush latrine					Private pour flush latrine				
	to piped sewer system					to piped sewer system					to piped sewer system				
	to septic tank					to septic tank					to septic tank				
	to pit					to pit					to pit				
	to unknown place/ not sure/DK					to unknown place/ not sure/DK					to unknown place/ not sure/DK				
	to elsewhere					to elsewhere					to elsewhere				
	Public/shared pour flush latrine					Public/shared pour flush latrine					Public/shared pour flush latrine				
	to piped sewer system					to piped sewer system					to piped sewer system				
	to septic tank					to septic tank					to septic tank				
	to pit					to pit					to pit				
	to unknown place/ not sure/DK					to unknown place/ not sure/DK					to unknown place/ not sure/DK				
	to elsewhere					to elsewhere					to elsewhere				
	Dry latrines	53.2	69.7	68.0		Dry latrines					Dry latrines				
	Improved latrines					Improved latrines					Improved latrines				
	Ventilated Improved Pit latrine					Ventilated Improved Pit latrine					Ventilated Improved Pit latrine				
	Pit latrine with slab/covered latrine					Pit latrine with slab/covered latrine					Pit latrine with slab/covered latrine				
Pit	Traditional latrine	20.6	29.1	28.2		Traditional latrine					Traditional latrine				
	Pit latrine without slab/open pit					Pit latrine without slab/open pit					Pit latrine without slab/open pit				
Hanging	Hanging toilet/hanging latrine	32.6	40.6	39.8		Hanging toilet/hanging latrine					Hanging toilet/hanging latrine				
	Bucket latrine					Bucket latrine					Bucket latrine				
	Other					Other					Other				
	Private Latrines					Private Latrines					Private Latrines				
	Ventilated Improved Pit latrine					Ventilated Improved Pit latrine					Ventilated Improved Pit latrine				
	Pit latrine with slab/covered latrine					Pit latrine with slab/covered latrine					Pit latrine with slab/covered latrine				
	Traditional latrine					Traditional latrine					Traditional latrine				
	Pit latrine without slab/open pit					Pit latrine without slab/open pit					Pit latrine without slab/open pit				
	Hanging toilet/hanging latrine					Hanging toilet/hanging latrine					Hanging toilet/hanging latrine				
	Bucket latrine					Bucket latrine					Bucket latrine				
	Other					Other					Other				
	Public/shared Latrines					Public/shared Latrines					Public/shared Latrines				
	Ventilated Improved Pit latrine					Ventilated Improved Pit latrine					Ventilated Improved Pit latrine				
	Pit latrine with slab/covered latrine					Pit latrine with slab/covered latrine					Pit latrine with slab/covered latrine				
	Traditional latrine					Traditional latrine					Traditional latrine				
	Pit latrine without slab/open pit					Pit latrine without slab/open pit					Pit latrine without slab/open pit				
	Hanging toilet/hanging latrine					Hanging toilet/hanging latrine					Hanging toilet/hanging latrine				
	Bucket latrine					Bucket latrine					Bucket latrine				
	Other					Other					Other				
	Composting toilets					Composting toilets					Composting toilets				
	Composting toilet (private)					Composting toilet (private)					Composting toilet (private)				
	Composting toilet (shared)					Composting toilet (shared)					Composting toilet (shared)				
	Other improved					Other improved	65.4	41.0			Other improved				
	Other					Other					Other				
	Other					Other					Other				
Open defecation	No facility, bush, field	3.9	27.0	24.5		No facility, bush, field					No facility, bush, field				
	Other unimproved					Other unimproved	28.9	59.0			Other unimproved				
	Other					Other					Other				
	Other					Other					Other				
	DK/missing information					DK/missing information					DK/missing information				
	Total	101.6	105.0	104.6		Total	100.0	100.0			Total	100.0	100.0		
Calculations						Calculations					Calculations				
	Estimated improved pit latrines based on MICS06	37.7	51.8												
Estimations						Estimations					Estimations				
	SC, based on ratio from MICS06	9.0	0.1												
	Access to improved sanitation :	82%	60%			Access to improved plus shared sanitation:	71%	41%			Access to improved plus shared sanitation:	71%	41%		
	Access to sewerage connections :	9%	0%			Access to sewerage connections :	6%	0%			Access to sewerage connections :	6%	0%		
	Used for the estimates	No	No			Used for the estimates	No	No			Used for the estimates	No	No		
	Used for the estimates	No	No			Used for the estimates	No	No			Used for the estimates	No	No		
Ratios	Shared improved facilities/all improved facilities					Shared improved facilities/all improved facilities					Shared improved facilities/all improved facilities				
	Improved latrine / All latrines	46%	11%	15%		Improved latrine / All latrines					Improved latrine / All latrines				
	Covered dry latrines / All dry latrines					Covered dry latrines / All dry latrines					Covered dry latrines / All dry latrines				
	VIP / All latrines					VIP / All latrines					VIP / All latrines				
	Traditional latrines / All latrines	21%	37%	35%		Traditional latrines / All latrines					Traditional latrines / All latrines				
	Improved + traditional latrines / All latrines	67%	48%	50%		Improved + traditional latrines / All latrines					Improved + traditional latrines / All latrines				
	Sewerage connection among flush/pour flush					Sewerage connection among flush/pour flush					Sewerage connection among flush/pour flush				
	Sewerage connection among flush					Sewerage connection among flush					Sewerage connection among flush				
	Number of people covered by the survey					Number of people covered by the survey					Number of people covered by the survey				
	Number of households covered by the survey					Number of households covered by the survey					Number of households covered by the survey				
	Total population					Total population	34800	92600			Total population	34800	92600		
Comments	multiple responses were possible explaining sum larger than 100%. However, according to the Bangladesh CO (email 14 March 2001), answers of both Water Seal and Pit amounts to around 0.01%, an noticeable problem for determination of total access to				Comments										

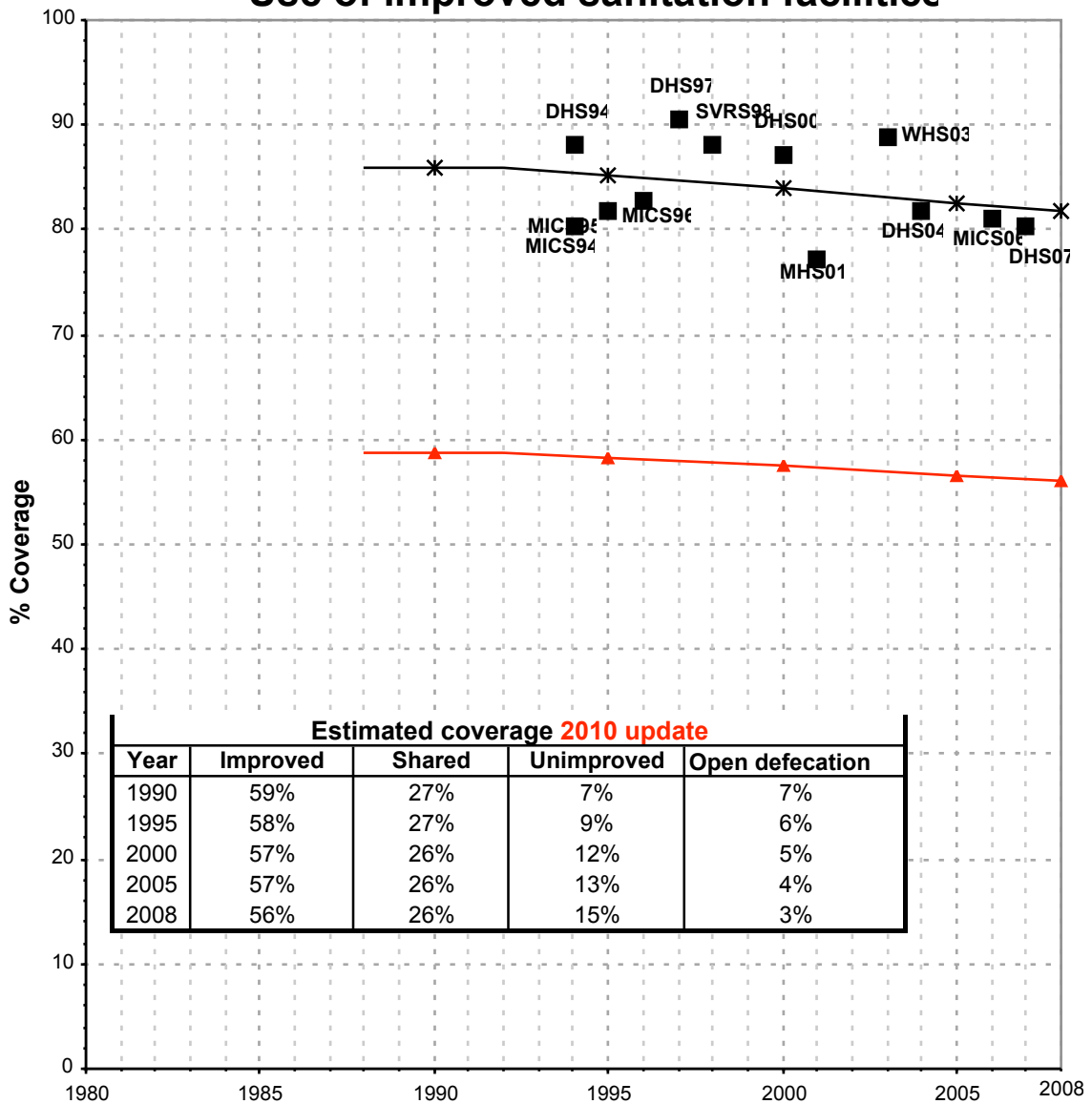
Use of sanitation facilities		PP00			Bangladesh			Use of sanitation facilities		DHS00			Bangladesh		
Progotir Pathay								Demographic and Health Survey							
Bangladesh Bureau of Statistics & UNICEF		2000								2000					
Original denomination	Classification	Urban	Rural	Total	Original denomination	Classification	Urban	Rural	Total						
	Flush and pour flush	42.9	10.0	13.6		Flush and pour flush	63.6	29.3	35.9						
	to piped sewer system					to piped sewer system									
	to septic tank					to septic tank	35.1	4.3	10.1						
	to pit					to pit									
	to unknown place/ not sure/DK					to unknown place/ not sure/DK									
	to elsewhere					to elsewhere									
	Flush/toilets					Flush/toilets	35.1	4.3	10.1						
	to piped sewer system					to piped sewer system									
	to septic tank				Septic Tank, modern	to septic tank	35.1	4.3	10.1						
	to pit					to pit									
	to unknown place/ not sure/DK					to unknown place/ not sure/DK									
	to elsewhere					to elsewhere									
	Private flush/toilet					Private flush/toilet									
	to piped sewer system					to piped sewer system									
	to septic tank					to septic tank									
	to pit					to pit									
	to unknown place/ not sure/DK					to unknown place/ not sure/DK									
	to elsewhere					to elsewhere									
	Public/shared flush/toilet					Public/shared flush/toilet									
	to piped sewer system					to piped sewer system									
	to septic tank					to septic tank									
	to pit					to pit									
	to unknown place/ not sure/DK					to unknown place/ not sure/DK									
	to elsewhere					to elsewhere									
	Latrines	98.3	86.9	81.0		Latrines	61.6	71.7	69.8						
Water Seal	Pour flush latrines	42.9	10.0	13.6	Water sealed/slab latrine	Pour flush latrines	28.7	25.0	25.7						
	to piped sewer system					to piped sewer system									
	to septic tank					to septic tank									
	to pit					to pit									
	to unknown place/ not sure/DK					to unknown place/ not sure/DK									
	to elsewhere					to elsewhere									
	Private pour flush latrine					Private pour flush latrine									
	to piped sewer system					to piped sewer system									
	to septic tank					to septic tank									
	to pit					to pit									
	to unknown place/ not sure/DK					to unknown place/ not sure/DK									
	to elsewhere					to elsewhere									
	Public/shared pour flush latrine					Public/shared pour flush latrine									
	to piped sewer system					to piped sewer system									
	to septic tank					to septic tank									
	to pit					to pit									
	to unknown place/ not sure/DK					to unknown place/ not sure/DK									
	to elsewhere					to elsewhere									
	Dry latrines	55.4	76.9	67.4		Dry latrines	32.9	46.7	44.1						
	Improved latrines					Improved latrines									
	Ventilated Improved Pit latrine					Ventilated Improved Pit latrine									
	Pit latrine with slab/covered latrine					Pit latrine with slab/covered latrine									
Pit	Traditional latrine	18.3	39.3	29.9	Traditional pit latrine	Traditional latrine	10.8	20.0	18.3						
	Pit latrine without slab/open pit				Open latrine	Pit latrine without slab/open pit	20.8	23.0	22.6						
Hanging	Hanging toilet/hanging latrine	37.1	37.6	37.5	Hanging latrine	Hanging toilet/hanging latrine	1.3	3.7	3.2						
	Bucket latrine					Bucket latrine									
	Other					Other									
	Private Latrines					Private Latrines									
	Ventilated Improved Pit latrine					Ventilated Improved Pit latrine									
	Pit latrine with slab/covered latrine					Pit latrine with slab/covered latrine									
	Traditional latrine					Traditional latrine									
	Pit latrine without slab/open pit					Pit latrine without slab/open pit									
	Hanging toilet/hanging latrine					Hanging toilet/hanging latrine									
	Bucket latrine					Bucket latrine									
	Other					Other									
	Public/shared Latrines					Public/shared Latrines									
	Ventilated Improved Pit latrine					Ventilated Improved Pit latrine									
	Pit latrine with slab/covered latrine					Pit latrine with slab/covered latrine									
	Traditional latrine					Traditional latrine									
	Pit latrine without slab/open pit					Pit latrine without slab/open pit									
	Hanging toilet/hanging latrine					Hanging toilet/hanging latrine									
	Bucket latrine					Bucket latrine									
	Other					Other									
	Composting toilets					Composting toilets									
	Composting toilet (private)					Composting toilet (private)									
	Composting toilet (shared)					Composting toilet (shared)									
	Other improved					Other improved									
	Other					Other									
	Other					Other									
Open defecation	No facility, bush, field	2.9	26.1	23.7	No facility/bush	No facility, bush, field	3.0	23.8	19.9						
	Other unimproved				Other	Other unimproved	0.1	0.1	0.1						
	Other					Other	0.1	0.1	0.1						
	Other					Other									
	DK/missing information				No data	DK/missing information	0.3	0.2	0.2						
	Total	101.2	113.0	104.7		Total	100.1	100.1	100.1						
Calculations						Calculations									
Estimations	Estimated improved pit latrines based on MICS06	39.3	57.1			Estimated improved pit latrines based on MICS06	23.3	34.7							
	SC, based on ratio from MICS06	8.7	0.2			SC, based on ratio from MICS06	12.9	0.4							
Access to improved sanitation :		82%	67%		Access to improved sanitation :		87%	64%							
Access to sewerage connections :		9%	0%		Access to sewerage connections :		13%	0%							
Used for the estimates		No	No		Used for the estimates		Yes	Yes							
Used for the estimates		No	No		Used for the estimates		Yes	Yes							
Ratios	Shared improved facilities/all improved facilities					Shared improved facilities/all improved facilities									
	Improved latrine / All latrines	44%	12%	17%		Improved latrine / All latrines	47%	35%	37%						
	Covered dry latrines / All dry latrines					Covered dry latrines / All dry latrines									
	VIP / All latrines					VIP / All latrines									
	Traditional latrines / All latrines	19%	45%	37%		Traditional latrines / All latrines	18%	28%	26%						
	Improved + traditional latrines / All latrines	62%	57%	54%		Improved + traditional latrines / All latrines	64%	63%	63%						
	Sewerage connection among flush/pour flush					Sewerage connection among flush/pour flush									
	Sewerage connection among flush					Sewerage connection among flush									
	Number of people covered by the survey					Number of people covered by the survey									
	Number of households covered by the survey					Number of households covered by the survey									
	Total population					Total population									
Comments	* multiple responses were possible explaining sum larger than 100%.				Comments										

Use of sanitation facilities		MHS01			Bangladesh		Use of sanitation facilities		WHS03			Bangladesh	
Maternal health services and Maternal Mortality survey					2001		World Health Survey					2003	
Original denomination	Classification	Urban	Rural	Total	Original denomination	Classification	Urban	Rural	Total				
	Flush and pour flush	46.9	19.3			Flush and pour flush	57.8	12.9					
	to piped sewer system					to piped sewer system	13.0	0.5					
	to septic tank	26.1	4.7			to septic tank	20.5	4.1					
	to pit					to pit							
	to unknown place/ not sure/DK					to unknown place/ not sure/DK							
	to elsewhere					to elsewhere							
	Flush/toilets	26.1	4.7			Flush/toilets	33.4	4.6					
	to piped sewer system					to piped sewer system	13.0	0.5					
	to septic tank	26.1	4.7			to septic tank	20.5	4.1					
	to pit					to pit							
	to unknown place/ not sure/DK					to unknown place/ not sure/DK							
	to elsewhere					to elsewhere							
	Private flush/toilet					Private flush/toilet	23.8	3.5					
	to piped sewer system				Private domestic connection to sewage system	to piped sewer system	8.3	0.3					
	to septic tank				Private flush to septic tank	to septic tank	15.5	3.2					
	to pit					to pit							
	to unknown place/ not sure/DK					to unknown place/ not sure/DK							
	to elsewhere					to elsewhere							
	Public/shared flush/toilet					Public/shared flush/toilet	9.7	1.1					
	to piped sewer system				Shared domestic connection to sewage system	to piped sewer system	4.7	0.2					
	to septic tank				Shared flush to septic tank	to septic tank	5.0	0.9					
	to pit					to pit							
	to unknown place/ not sure/DK					to unknown place/ not sure/DK							
	to elsewhere					to elsewhere							
	Latrines	63.5	68.7			Latrines	61.5	67.2					
	Pour flush latrines	20.8	14.8			Pour flush latrines	24.4	8.2					
	to piped sewer system					to piped sewer system							
	to septic tank					to septic tank							
	to pit					to pit							
	to unknown place/ not sure/DK					to unknown place/ not sure/DK							
	to elsewhere					to elsewhere							
	Private pour flush latrine				Private pour flush latrine	Private pour flush latrine	16.3	5.7					
	to piped sewer system					to piped sewer system							
	to septic tank					to septic tank							
	to pit					to pit							
	to unknown place/ not sure/DK					to unknown place/ not sure/DK							
	to elsewhere					to elsewhere							
	Public/shared pour flush latrine				Shared pour flush latrine	Public/shared pour flush latrine	8.1	2.5					
	to piped sewer system					to piped sewer system							
	to septic tank					to septic tank							
	to pit					to pit							
	to unknown place/ not sure/DK					to unknown place/ not sure/DK							
	to elsewhere					to elsewhere							
	Dry latrines	42.7	54.1			Dry latrines	37.1	58.9					
	Improved latrines					Improved latrines	31.1	42.0					
	Ventilated Improved Pit latrine					Ventilated Improved Pit latrine							
	Pit latrine with slab/covered latrine					Pit latrine with slab/covered latrine	31.1	42.0					
	Traditional latrine	22.5	25.6			Traditional latrine							
	Pit latrine without slab/open pit	17.6	24.8		Uncovered dry latrine (without privacy)	Pit latrine without slab/open pit	6.0	16.7					
	Hanging toilet/hanging latrine	2.6	3.7			Hanging toilet/hanging latrine							
	Bucket latrine				Bucket latrine (where fresh excreta are manually removed)	Bucket latrine	0.1	0.3					
	Other					Other							
	Private Latrines					Private Latrines	17.6	27.9					
	Ventilated Improved Pit latrine					Ventilated Improved Pit latrine							
	Pit latrine with slab/covered latrine				Private covered dry latrine (with privacy)	Pit latrine with slab/covered latrine	17.6	27.9					
	Traditional latrine					Traditional latrine							
	Pit latrine without slab/open pit					Pit latrine without slab/open pit							
	Hanging toilet/hanging latrine					Hanging toilet/hanging latrine							
	Bucket latrine					Bucket latrine							
	Other					Other							
	Public/shared Latrines					Public/shared Latrines	13.5	14.1					
	Ventilated Improved Pit latrine					Ventilated Improved Pit latrine							
	Pit latrine with slab/covered latrine				Shared covered dry latrine (with privacy)	Pit latrine with slab/covered latrine	13.5	14.1					
	Traditional latrine					Traditional latrine							
	Pit latrine without slab/open pit					Pit latrine without slab/open pit							
	Hanging toilet/hanging latrine					Hanging toilet/hanging latrine							
	Bucket latrine					Bucket latrine							
	Other					Other							
	Composting toilets					Composting toilets							
	Composting toilet (private)					Composting toilet (private)							
	Composting toilet (shared)					Composting toilet (shared)							
	Other improved					Other improved							
	Other					Other							
	Other					Other							
	No facility, bush, field	10.4	26.6		No facilities (open defecation)	No facility, bush, field	4.4	23.6					
	Other unimproved					Other unimproved	0.7	4.6					
	Other				Other	Other	0.7	4.6					
	Other					Other							
	DK/missing information					DK/missing information							
	Total	100.0	100.0			Total	100.0	100.0					
Calculations					Calculations								
Estimations					Estimations								
	Estimated improved pit latrines based on MICS06	30.3	40.2										
	SC, based on ratio from MICS06	9.5	0.3										
	Access to improved sanitation :	77%	59%			Access to improved sanitation :	89%	55%					
	Access to sewerage connections :	9%	0%			Access to sewerage connections :	13%	1%					
	Used for the estimates	Yes	Yes			Used for the estimates	Yes	No					
	Used for the estimates	Yes	Yes			Used for the estimates	Yes	Yes					
Ratios	Shared improved facilities/all improved facilities					Shared improved facilities/all improved facilities							
	Improved latrine / All latrines	33%	21%			Improved latrine / All latrines	90%	75%					
	Covered dry latrines / All dry latrines					Covered dry latrines / All dry latrines	84%	71%					
	VIP / All latrines					VIP / All latrines							
	Traditional latrines / All latrines	35%	37%			Traditional latrines / All latrines							
	Improved + traditional latrines / All latrines	68%	59%			Improved + traditional latrines / All latrines							
	Sewerage connection among flush/pour flush					Sewerage connection among flush/pour flush	22.5	4.0					
	Sewerage connection among flush					Sewerage connection among flush	38.8	11.2					
	Number of people covered by the survey					Number of people covered by the survey							
	Number of households covered by the survey					Number of households covered by the survey							
	Total population					Total population							
Comments					Comments								

Use of sanitation facilities		DHS04			Bangladesh			Use of sanitation facilities		MICS06			Bangladesh		
Demographic and Health Survey					2004			Multiple Cluster Indicator Survey					2006		
Original denomination	Classification	Urban	Rural	Total	Original denomination	Classification	Urban	Rural	Total						
	Flush and pour flush	48.0	16.0			Flush and pour flush	46.5	13.1							
	to piped sewer system					to piped sewer system	9.4	0.2							
	to septic tank	29.5	3.2			to septic tank	28.3	7.1							
	to pit					to pit	6.6	5.7							
	to unknown place/ not sure/DK					to unknown place/ not sure/DK	0.9	0.0							
	to elsewhere					to elsewhere	1.3	0.1							
	Flush/toilets	29.5	3.2			Flush/toilets	46.5	13.1							
	to piped sewer system				Flush to piped sewer system	to piped sewer system	9.4	0.2							
Septic tank, modern toilet	to septic tank	29.5	3.2		Flush to septic tank	to septic tank	28.3	7.1							
	to pit				Flush to pit (latrine)	to pit	6.6	5.7							
	to unknown place/ not sure/DK				Flush to unknown place/not sure/DK where	to unknown place/ not sure/DK	0.9	0.0							
	to elsewhere				Flush to somewhere else	to elsewhere	1.3	0.1							
	Private flush/toilet					Private flush/toilet									
	to piped sewer system					to piped sewer system									
	to septic tank					to septic tank									
	to pit					to pit									
	to unknown place/ not sure/DK					to unknown place/ not sure/DK									
	to elsewhere					to elsewhere									
	Public/shared flush/toilet					Public/shared flush/toilet									
	to piped sewer system					to piped sewer system									
	to septic tank					to septic tank									
	to pit					to pit									
	to unknown place/ not sure/DK					to unknown place/ not sure/DK									
	to elsewhere					to elsewhere									
	Latrines	66.3	80.4			Latrines	50.5	76.9							
Water sealed/slab latrine	Pour flush latrines	18.5	12.8			Pour flush latrines									
	to piped sewer system					to piped sewer system									
	to septic tank					to septic tank									
	to pit					to pit									
	to unknown place/ not sure/DK					to unknown place/ not sure/DK									
	to elsewhere					to elsewhere									
	Private pour flush latrine					Private pour flush latrine									
	to piped sewer system					to piped sewer system									
	to septic tank					to septic tank									
	to pit					to pit									
	to unknown place/ not sure/DK					to unknown place/ not sure/DK									
	to elsewhere					to elsewhere									
	Public/shared pour flush latrine					Public/shared pour flush latrine									
	to piped sewer system					to piped sewer system									
	to septic tank					to septic tank									
	to pit					to pit									
	to unknown place/ not sure/DK					to unknown place/ not sure/DK									
	to elsewhere					to elsewhere									
	Dry latrines	47.8	67.6			Dry latrines	50.5	76.9							
	Improved latrines					Improved latrines	13.4	18.6							
	Ventilated Improved Pit latrine					Ventilated Improved Pit latrine									
	Pit latrine with slab/covered latrine				Pit latrine with slab	Pit latrine with slab/covered latrine	13.4	18.6							
Pit latrine	Traditional latrine	23.1	39.0			Traditional latrine									
Open latrine	Pit latrine without slab/open pit	23.0	26.7		Pit latrine without slab/open pit	Pit latrine without slab/open pit	22.4	38.5							
Hanging latrine	Hanging toilet/hanging latrine	1.7	1.9		Hanging toilet/hanging latrine	Hanging toilet/hanging latrine	14.5	19.7							
	Bucket latrine				Bucket	Bucket latrine	0.2	0.1							
	Other					Other									
	Private Latrines					Private Latrines									
	Ventilated Improved Pit latrine					Ventilated Improved Pit latrine									
	Pit latrine with slab/covered latrine					Pit latrine with slab/covered latrine									
	Traditional latrine					Traditional latrine									
	Pit latrine without slab/open pit					Pit latrine without slab/open pit									
	Hanging toilet/hanging latrine					Hanging toilet/hanging latrine									
	Bucket latrine					Bucket latrine									
	Other					Other									
	Public/shared Latrines					Public/shared Latrines									
	Ventilated Improved Pit latrine					Ventilated Improved Pit latrine									
	Pit latrine with slab/covered latrine					Pit latrine with slab/covered latrine									
	Traditional latrine					Traditional latrine									
	Pit latrine without slab/open pit					Pit latrine without slab/open pit									
	Hanging toilet/hanging latrine					Hanging toilet/hanging latrine									
	Bucket latrine					Bucket latrine									
	Other					Other									
	Composting toilets					Composting toilets									
	Composting toilet (private)					Composting toilet (private)									
	Composting toilet (shared)					Composting toilet (shared)									
	Other improved					Other improved									
	Other					Other									
No facility/bush	No facility, bush, field	4.2	16.4		No facilities or bush or field	No facility, bush, field	2.6	9.5							
	Other unimproved				Other	Other unimproved	0.1	0.1							
	Other				Other	Other	0.1	0.1							
	DK/missing information				Missing	DK/missing information	0.3	0.2							
	Total	100.0	100.0			Total	100.0	99.8							
Calculations					Calculations										
Estimations	Estimated improved pit latrines based on MICS06	33.9	50.2			Pit latrines without slab/open pit are latrines with slab but without siphon	22.4	38.5							
	SC, based on ratio from MICS06	9.7	0.2												
Access to improved sanitation :		82%	66%		Access to improved sanitation :		81%	70%							
Access to sewerage connections :		10%	0%		Access to sewerage connections :		9%	0%							
Used for the estimates		Yes	Yes		Used for the estimates		Yes	Yes							
Used for the estimates		Yes	Yes		Used for the estimates		Yes	Yes							
Ratios	Shared improved facilities/all improved facilities					Shared improved facilities/all improved facilities	29.7%	25.7%							
	Improved latrine / All latrines	28%	16%			Improved latrine / All latrines	27%	24%							
	Covered dry latrines / All dry latrines					Covered dry latrines / All dry latrines	27%	24%							
	VIP / All latrines					Ratio pit latrine with slab/all (non) flush pit latrines	71%	74%							
	Traditional latrines / All latrines	35%	49%			Traditional latrines / All latrines									
	Improved + traditional latrines / All latrines	63%	64%			Improved + traditional latrines / All latrines									
	Sewerage connection among flush/pour flush					Sewerage connection among flush/pour flush	20.2	1.5							
	Sewerage connection among flush					Sewerage connection among flush	20.2	1.5							
	Number of people covered by the survey					Number of people covered by the survey									
	Number of households covered by the survey					Number of households covered by the survey									
	Total population					Total population									
Comments					Comments										

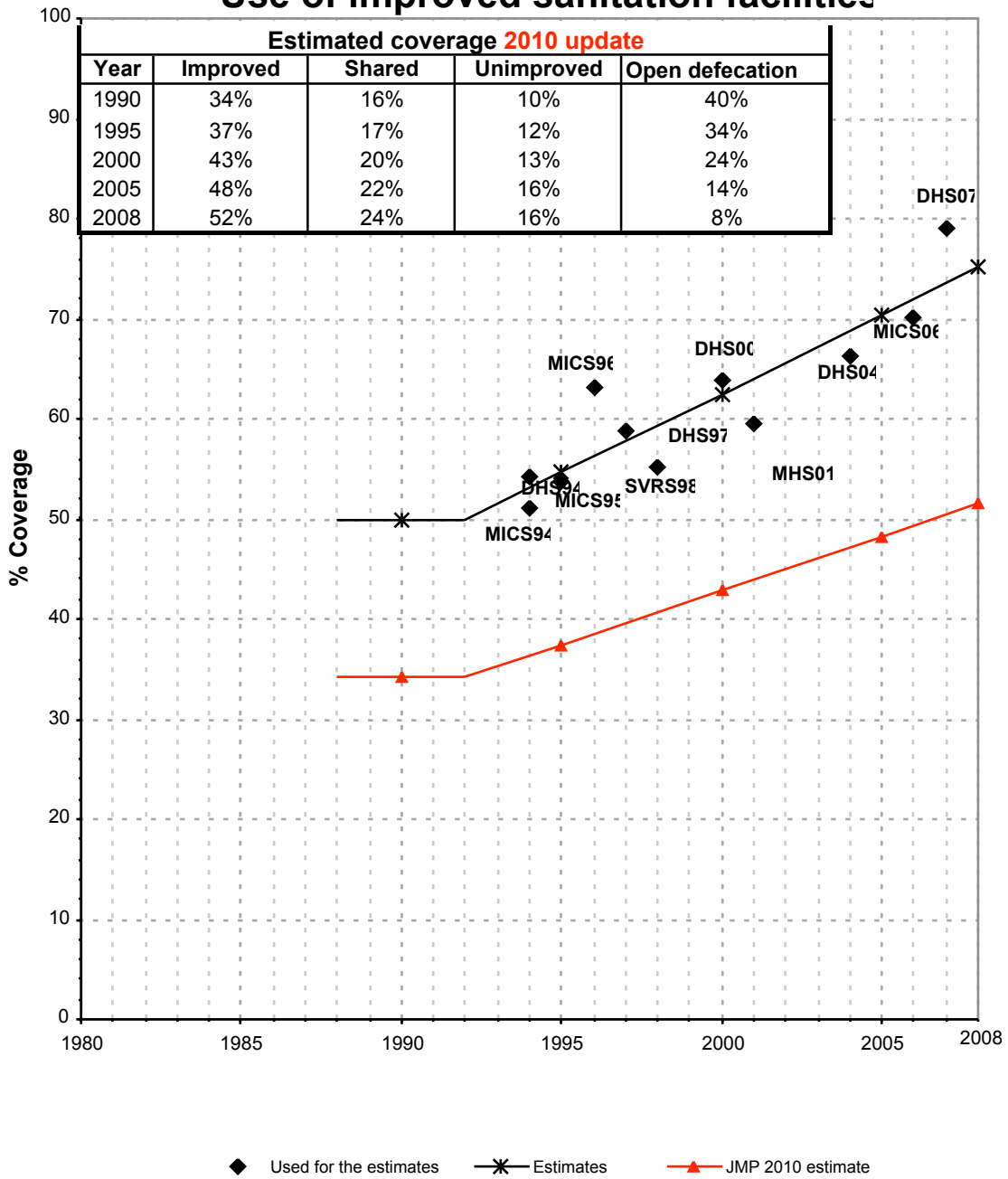
Bangladesh			SANITATION															
			URBAN								RURAL							
			Sewer connection		Total		Open defecation		Shared		Sewer connection		Total		Open defecation		Shared	
Source	Code	Year	Used	Not used	Used	Not used	Used	Not used	Used	Not used	Used	Not used	Used	Not used	Used	Not used	Used	Not used
Demographic and Health Survey	DHS94	1994	14.6		88.1		4.8				0.3		54.1		33.4			
Multiple Indicator Cluster Survey	MICS94	1994	9.6		80.2						0.1		51.0					
Multiple Indicator Cluster Survey	MICS95	1995	10.8		81.7						0.1		53.8					
Multiple Indicator Cluster Survey	MICS96	1996	10.5		82.7						0.1		63.2					
Demographic and Health Survey	DHS97	1997	15.6		90.4		4.2				0.4		58.9		29.1			
	SVRS98	1998	15.7		88.1		7.7				0.1		55.2		28.4			
Multiple Indicator Cluster Survey	MICS99	1999		9.0		82.2		3.9				0.1		60.1		27.0		
Global Water Supply and Sanitation Assessment 2000.	JMP99	1999		5.7		71.1						0.0		41.0				
Progotir Pathey	PP00	2000		8.7		82.2		2.9				0.2		67.1		26.1		
Demographic and Health Survey	DHS00	2000	12.9		87.1		3.0				0.4		64.0		23.8			
Maternal health services and Maternal Mortality survey	MHS01	2001	9.5		77.2		10.4				0.3		59.5		26.6			
World Health Survey	WHS03	2003	13.0		88.9		4.4				0.5		54.9		23.6			
Demographic and Health Survey	DHS04	2004	9.7		81.9		4.2				0.2		66.2		16.4			
Multiple Cluster Indicator Survey	MICS06	2006	9.4		81.0		2.6		29.7		0.2		70.1		9.5		29.7	
Demographic and Health Survey	DHS07	2007	8.5		80.2		1.7		33.2		0.2		79.1		9.1		33.1	

Bangladesh - urban - Use of improved sanitation facilities



■ Used for the estimates * Estimates ▲ JMP 2010 estimate

Bangladesh - rural - Use of improved sanitation facilities



Sanitation

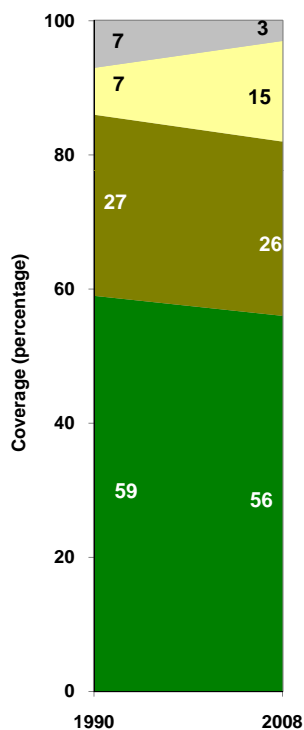
Bangladesh	Sanitation coverage estimates					
	Urban (%)		Rural (%)		Total (%)	
	1990	2008	1990	2008	1990	2008
Improved facilities	59	56	34	52	39	53
Shared facilities	27	26	16	24	18	25
Unimproved facilities	7	15	10	16	10	15
Open defecation	7	3	40	8	33	7

Source: WHO/UNICEF JMP, 2010

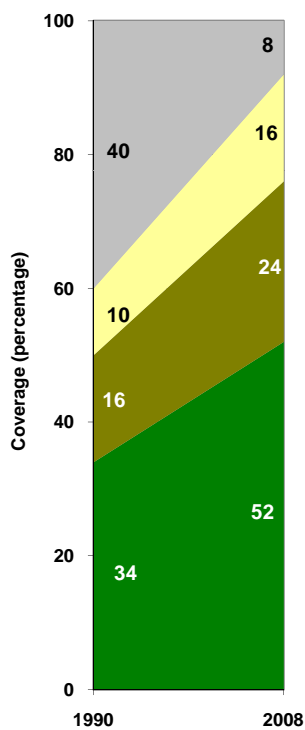
Bangladesh	Urban		Rural		Total	
	1990	2008	1990	2008	1990	2008
Population (x1000)	22,908	43,312	92,724	116,688	115,632	160,000

Source: UN / Population Division, 2008

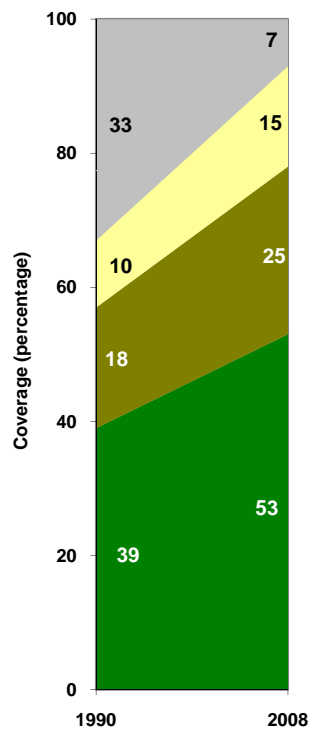
Urban sanitation trends



Rural sanitation trends



Total sanitation trends



■ Improved facilities
■ Shared facilities
■ Unimproved facilities
■ Open defecation

■ Improved facilities
■ Shared facilities
■ Unimproved facilities
■ Open defecation

■ Improved facilities
■ Shared facilities
■ Unimproved facilities
■ Open defecation