

**WHO / UNICEF**

**Joint Monitoring Programme**  
for Water Supply and Sanitation

Estimates for the use of

**Improved Drinking-Water Sources  
and Improved Sanitation Facilities**

Updated March 2010

[childinfo.org](http://childinfo.org)



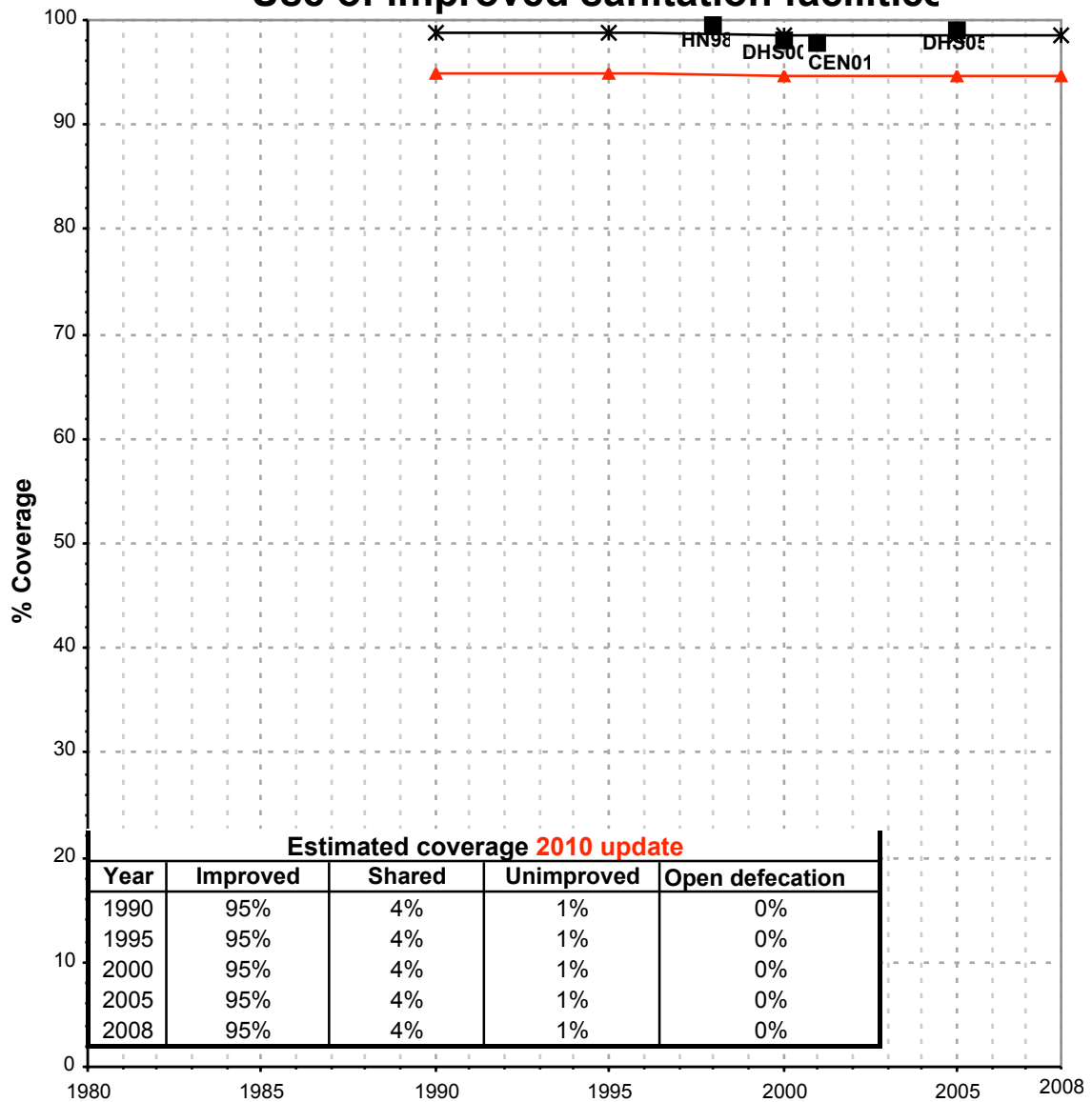
Use of sanitation facilities		DHS00			Armenia			Use of sanitation facilities		CEN01			Armenia		
Demographic and Health Survey					2000			National Census					2001		
Statistical Yearbook of Armenia 2002: 137: Provision of housing stock with utilities; Ratio of housing stock equipped with (2001):								Statistical Yearbook of Armenia 2002: 137: Provision of housing stock with utilities; Ratio of housing stock equipped with (2001):							
Original denomination	Classification				Urban	Rural	Total	Original denomination	Classification				Urban	Rural	Total
	<b>Flush and pour flush</b>				90.3	20.5			<b>Flush and pour flush</b>				90.7	20.6	
		to piped sewer system								to piped sewer system					
		to septic tank								to septic tank					
		to pit								to pit					
		to unknown place/ not sure/DK								to unknown place/ not sure/DK					
		to elsewhere								to elsewhere					
	<b>Flush/toilets</b>				90.3	20.5			<b>Flush/toilets</b>				90.7	20.6	
		to piped sewer system								to piped sewer system					
		to septic tank								to septic tank					
		to pit								to pit					
		to unknown place/ not sure/DK								to unknown place/ not sure/DK					
		to elsewhere								to elsewhere					
Own flush toilet	<b>Private flush/toilet</b>				90.3	20.5		Flushing, in the dwelling unit	<b>Private flush/toilet</b>				88.2	18.4	
		to piped sewer system								to piped sewer system					
		to septic tank								to septic tank					
		to pit								to pit					
		to unknown place/ not sure/DK								to unknown place/ not sure/DK					
		to elsewhere								to elsewhere					
	<b>Public/shared flush/toilet</b>							Flushing, outside the dwelling unit, for common use	<b>Public/shared flush/toilet</b>				2.5	2.2	
		to piped sewer system								to piped sewer system					
		to septic tank								to septic tank					
		to pit								to pit					
		to unknown place/ not sure/DK								to unknown place/ not sure/DK					
		to elsewhere								to elsewhere					
	<b>Latrines</b>				9.2	79.1			<b>Latrines</b>				8.6	75.8	
	<b>Pour flush latrines</b>								<b>Pour flush latrines</b>						
		to piped sewer system								to piped sewer system					
		to septic tank								to septic tank					
		to pit								to pit					
		to unknown place/ not sure/DK								to unknown place/ not sure/DK					
		to elsewhere								to elsewhere					
	<b>Private pour flush latrine</b>								<b>Private pour flush latrine</b>						
		to piped sewer system								to piped sewer system					
		to septic tank								to septic tank					
		to pit								to pit					
		to unknown place/ not sure/DK								to unknown place/ not sure/DK					
		to elsewhere								to elsewhere					
	<b>Public/shared pour flush latrine</b>								<b>Public/shared pour flush latrine</b>						
		to piped sewer system								to piped sewer system					
		to septic tank								to septic tank					
		to pit								to pit					
		to unknown place/ not sure/DK								to unknown place/ not sure/DK					
		to elsewhere								to elsewhere					
	<b>Dry latrines</b>				9.2	79.1			<b>Dry latrines</b>				8.6	75.8	
	<b>Improved latrines</b>								<b>Improved latrines</b>						
		Ventilated Improved Pit latrine								Ventilated Improved Pit latrine					
		Pit latrine with slab/covered latrine								Pit latrine with slab/covered latrine					
Traditional pit toilet		Traditional latrine			9.2	79.1				Traditional latrine					
		Pit latrine without slab/open pit								Pit latrine without slab/open pit					
		Hanging toilet/hanging latrine								Hanging toilet/hanging latrine					
		Bucket latrine								Bucket latrine					
		Other								Other					
	<b>Private Latrines</b>							Non-flushing, outside the dwelling unit, for exclusive use b	<b>Private Latrines</b>				7.5	73.0	
		Ventilated Improved Pit latrine								Ventilated Improved Pit latrine					
		Pit latrine with slab/covered latrine								Pit latrine with slab/covered latrine					
		Traditional latrine								Traditional latrine					
		Pit latrine without slab/open pit								Pit latrine without slab/open pit					
		Hanging toilet/hanging latrine								Hanging toilet/hanging latrine					
		Bucket latrine								Bucket latrine					
		Other								Other					
	<b>Public/shared Latrines</b>							Non-flushing, outside the dwelling unit, for common use	<b>Public/shared Latrines</b>				1.1	2.8	
		Ventilated Improved Pit latrine								Ventilated Improved Pit latrine					
		Pit latrine with slab/covered latrine								Pit latrine with slab/covered latrine					
		Traditional latrine								Traditional latrine					
		Pit latrine without slab/open pit								Pit latrine without slab/open pit					
		Hanging toilet/hanging latrine								Hanging toilet/hanging latrine					
		Bucket latrine								Bucket latrine					
		Other								Other					
	<b>Composting toilets</b>								<b>Composting toilets</b>						
		Composting toilet (private)								Composting toilet (private)					
		Composting toilet (shared)								Composting toilet (shared)					
	<b>Other improved</b>								<b>Other improved</b>						
		Other								Other					
		Other								Other					
	<b>No facility, bush, field</b>								<b>No facility, bush, field</b>						
	<b>Other unimproved</b>				0.5	0.4			<b>Other unimproved</b>				0.7	3.5	
Other		Other			0.5	0.4		Other		Other			0.7	3.5	
		Other								Other					
	<b>DK/missing information</b>								<b>DK/missing information</b>						
	<b>Total</b>				100.0	100.0			<b>Total</b>				100.0	99.9	
<b>Calculations</b>								<b>Calculations</b>							
	Traditional latrines considered improved based on DHS05				7.7	60.3			Traditional latrines considered improved based on DHS05				7.2	57.7	
<b>Estimations</b>								<b>Estimations</b>							
	Sewerage connections based on HNS98				90.3	19.8			Sewerage connections based on HNS98						
<b>Access to improved sanitation : 98% 81%</b>								<b>Access to improved sanitation : 98% 78%</b>							
<b>Access to sewerage connections : 90% 20%</b>								<b>Access to sewerage connections :</b>							
Used for the estimates					Yes	Yes		Used for the estimates					Yes	Yes	
Used for the estimates					Yes	Yes		Used for the estimates					No	No	
<b>Ratios</b>								<b>Ratios</b>							
	Shared improved facilities/all improved facilities				6.5%	5.0%			Shared improved facilities/all improved facilities						
	Improved latrine / All latrines								Improved latrine / All latrines						
	Covered dry latrines / All dry latrines								Covered dry latrines / All dry latrines						
	VIP / All latrines								VIP / All latrines						
	Traditional latrines / All latrines				100%	100%			Traditional latrines / All latrines						
	Improved + traditional latrines / All latrines								Improved + traditional latrines / All latrines						
	Sewerage connection among flush/pour flush								Sewerage connection among flush/pour flush						
	Sewerage connection among flush								Sewerage connection among flush						
Number of people covered by the survey:								Number of people covered by the survey:							
Number of households covered by the survey:								Number of households covered by the survey:							
Total population:								Total population:							
<b>Comments</b>								<b>Comments</b>							

Use of sanitation facilities		DHS05			Armenia			Use of sanitation facilities		ISLS03			Armenia						
Demographic and Health Survey					2005					INTEGRATED SURVEY OF LIVING STANDARDS					2003				
NATIONAL STATISTICAL SERVICE Data received from World Bank																			
Original denomination	Classification	Urban	Rural	Total	Original denomination	Classification	Urban	Rural	Total	Original denomination	Classification	Urban	Rural	Total					
	<b>Flush and pour flush</b>	93.9	24.9			<b>Flush and pour flush</b>	84.9	22.3			<b>Flush and pour flush</b>	84.9	22.3						
	to piped sewer system	92.1	17.3			to piped sewer system					to piped sewer system								
	to septic tank	0.3	0.3			to septic tank					to septic tank								
	to pit	1.0	7.1			to pit					to pit								
	to unknown place/ not sure/DK to elsewhere	0.5	0.2			to unknown place/ not sure/DK to elsewhere					to unknown place/ not sure/DK to elsewhere								
	<b>Flush/toilets</b>	93.4	24.7		flush toilet	<b>Flush/toilets</b>	84.9	22.3			<b>Flush/toilets</b>	84.9	22.3						
Flush to piped sewer system	to piped sewer system	92.1	17.3			to piped sewer system					to piped sewer system								
Flush to septic tank	to septic tank	0.3	0.3			to septic tank					to septic tank								
Flush to pit latrine	to pit	1.0	7.1			to pit					to pit								
	to unknown place/ not sure/DK to elsewhere					to unknown place/ not sure/DK to elsewhere					to unknown place/ not sure/DK to elsewhere								
	<b>Private flush/toilet</b>					<b>Private flush/toilet</b>					<b>Private flush/toilet</b>								
	to piped sewer system					to piped sewer system					to piped sewer system								
	to septic tank					to septic tank					to septic tank								
	to pit					to pit					to pit								
	to unknown place/ not sure/DK to elsewhere					to unknown place/ not sure/DK to elsewhere					to unknown place/ not sure/DK to elsewhere								
	<b>Public/shared flush/toilet</b>					<b>Public/shared flush/toilet</b>					<b>Public/shared flush/toilet</b>								
	to piped sewer system					to piped sewer system					to piped sewer system								
	to septic tank					to septic tank					to septic tank								
	to pit					to pit					to pit								
	to unknown place/ not sure/DK to elsewhere					to unknown place/ not sure/DK to elsewhere					to unknown place/ not sure/DK to elsewhere								
	<b>Latrines</b>	4.7	72.0			<b>Latrines</b>					<b>Latrines</b>								
	<b>Pour flush latrines</b>	0.5	0.2			<b>Pour flush latrines</b>					<b>Pour flush latrines</b>								
	to piped sewer system					to piped sewer system					to piped sewer system								
	to septic tank					to septic tank					to septic tank								
	to pit					to pit					to pit								
Pour flush not to sewer, septic tank, pit latrine	to unknown place/ not sure/DK to elsewhere	0.5	0.2			to unknown place/ not sure/DK to elsewhere					to unknown place/ not sure/DK to elsewhere								
	<b>Private pour flush latrine</b>					<b>Private pour flush latrine</b>					<b>Private pour flush latrine</b>								
	to piped sewer system					to piped sewer system					to piped sewer system								
	to septic tank					to septic tank					to septic tank								
	to pit					to pit					to pit								
	to unknown place/ not sure/DK to elsewhere					to unknown place/ not sure/DK to elsewhere					to unknown place/ not sure/DK to elsewhere								
	<b>Public/shared pour flush latrine</b>					<b>Public/shared pour flush latrine</b>					<b>Public/shared pour flush latrine</b>								
	to piped sewer system					to piped sewer system					to piped sewer system								
	to septic tank					to septic tank					to septic tank								
	to pit					to pit					to pit								
	to unknown place/ not sure/DK to elsewhere					to unknown place/ not sure/DK to elsewhere					to unknown place/ not sure/DK to elsewhere								
	<b>Dry latrines</b>	4.2	71.8			<b>Dry latrines</b>					<b>Dry latrines</b>								
	<b>Improved latrines</b>	3.5	54.7			<b>Improved latrines</b>					<b>Improved latrines</b>								
Ventilated Improved Pit latrine	Ventilated Improved Pit latrine	2.9	47.2			Ventilated Improved Pit latrine					Ventilated Improved Pit latrine								
Pit latrine with slab	Pit latrine with slab/covered latrine	0.6	7.5			Pit latrine with slab/covered latrine					Pit latrine with slab/covered latrine								
	Traditional latrine					Traditional latrine					Traditional latrine								
Pit latrine without slab/open pit	Pit latrine without slab/open pit	0.5	17.0			Pit latrine without slab/open pit					Pit latrine without slab/open pit								
	Hanging toilet/hanging latrine					Hanging toilet/hanging latrine					Hanging toilet/hanging latrine								
Bucket	Bucket latrine	0.2	0.1			Bucket latrine					Bucket latrine								
	Other					Other					Other								
	<b>Private Latrines</b>					<b>Private Latrines</b>					<b>Private Latrines</b>								
	Ventilated Improved Pit latrine					Ventilated Improved Pit latrine					Ventilated Improved Pit latrine								
	Pit latrine with slab/covered latrine					Pit latrine with slab/covered latrine					Pit latrine with slab/covered latrine								
	Traditional latrine					Traditional latrine					Traditional latrine								
	Pit latrine without slab/open pit					Pit latrine without slab/open pit					Pit latrine without slab/open pit								
	Hanging toilet/hanging latrine					Hanging toilet/hanging latrine					Hanging toilet/hanging latrine								
	Bucket latrine					Bucket latrine					Bucket latrine								
	Other					Other					Other								
	<b>Public/shared Latrines</b>					<b>Public/shared Latrines</b>					<b>Public/shared Latrines</b>								
	Ventilated Improved Pit latrine					Ventilated Improved Pit latrine					Ventilated Improved Pit latrine								
	Pit latrine with slab/covered latrine					Pit latrine with slab/covered latrine					Pit latrine with slab/covered latrine								
	Traditional latrine					Traditional latrine					Traditional latrine								
	Pit latrine without slab/open pit					Pit latrine without slab/open pit					Pit latrine without slab/open pit								
	Hanging toilet/hanging latrine					Hanging toilet/hanging latrine					Hanging toilet/hanging latrine								
	Bucket latrine					Bucket latrine					Bucket latrine								
	Other					Other					Other								
	<b>Composting toilets</b>					<b>Composting toilets</b>					<b>Composting toilets</b>								
	Composting toilet (private)					Composting toilet (private)					Composting toilet (private)								
	Composting toilet (shared)					Composting toilet (shared)					Composting toilet (shared)								
	<b>Other improved</b>	1.6	3.1			<b>Other improved</b>					<b>Other improved</b>								
Any facility shared with others	Other	1.6	3.1			Other					Other								
	Other					Other					Other								
No facilities or bush or field	<b>No facility, bush, field</b>	0.1	0.0			<b>No facility, bush, field</b>					<b>No facility, bush, field</b>								
	<b>Other unimproved</b>	0.2	0.1			<b>Other unimproved</b>					<b>Other unimproved</b>								
Other/missing	Other	0.2	0.1			Other					Other								
	Other					Other					Other								
	<b>DK/missing information</b>					<b>DK/missing information</b>					<b>DK/missing information</b>								
	<b>Total</b>	100.0	99.9			<b>Total</b>	84.9	22.3			<b>Total</b>	84.9	22.3						
<b>Calculations</b>						<b>Calculations</b>					<b>Calculations</b>								
<b>Estimations</b>						<b>Estimations</b>					<b>Estimations</b>								
<b>Access to improved sanitation :</b>		<b>99%</b>	<b>83%</b>		<b>Access to improved sanitation :</b>		<b>85%</b>	<b>22%</b>		<b>Access to improved sanitation :</b>		<b>85%</b>	<b>22%</b>						
<b>Access to sewerage connections :</b>		<b>92%</b>	<b>17%</b>		<b>Access to sewerage connections :</b>					<b>Access to sewerage connections :</b>									
Used for the estimates		Yes	Yes		Used for the estimates		No	No		Used for the estimates		No	No						
Used for the estimates		Yes	Yes		Used for the estimates		No	No		Used for the estimates		No	No						
<b>Ratios</b>	Shared improved facilities/all improved facilities	1.3%	3.2%		<b>Ratios</b>	Shared improved facilities/all improved facilities				<b>Ratios</b>	Shared improved facilities/all improved facilities								
	Improved latrine / All latrines	85%	76%			Improved latrine / All latrines					Improved latrine / All latrines								
	Covered dry latrines / All dry latrines	14%	10%			Covered dry latrines / All dry latrines					Covered dry latrines / All dry latrines								
	VIP / All latrines	69%	66%			VIP / All latrines					VIP / All latrines								
	Improved dry latrines / All dry latrines	83%	76%			Improved dry latrines / All dry latrines					Improved dry latrines / All dry latrines								
	Improved + traditional latrines / All latrines					Improved + traditional latrines / All latrines					Improved + traditional latrines / All latrines								
	Sewerage connection among flush/pour flush	98.1	69.5			Sewerage connection among flush/pour flush					Sewerage connection among flush/pour flush								
Sewerage connection among flush	98.6	70.0		Sewerage connection among flush				Sewerage connection among flush											
Number of people covered by the survey					Number of people covered by the survey					Number of people covered by the survey									
Number of households covered by the survey					Number of households covered by the survey					Number of households covered by the survey									
Total population					Total population					Total population									
<b>Comments</b>	Shared facilities have been attributed proportionally to the other categories.				<b>Comments</b>														



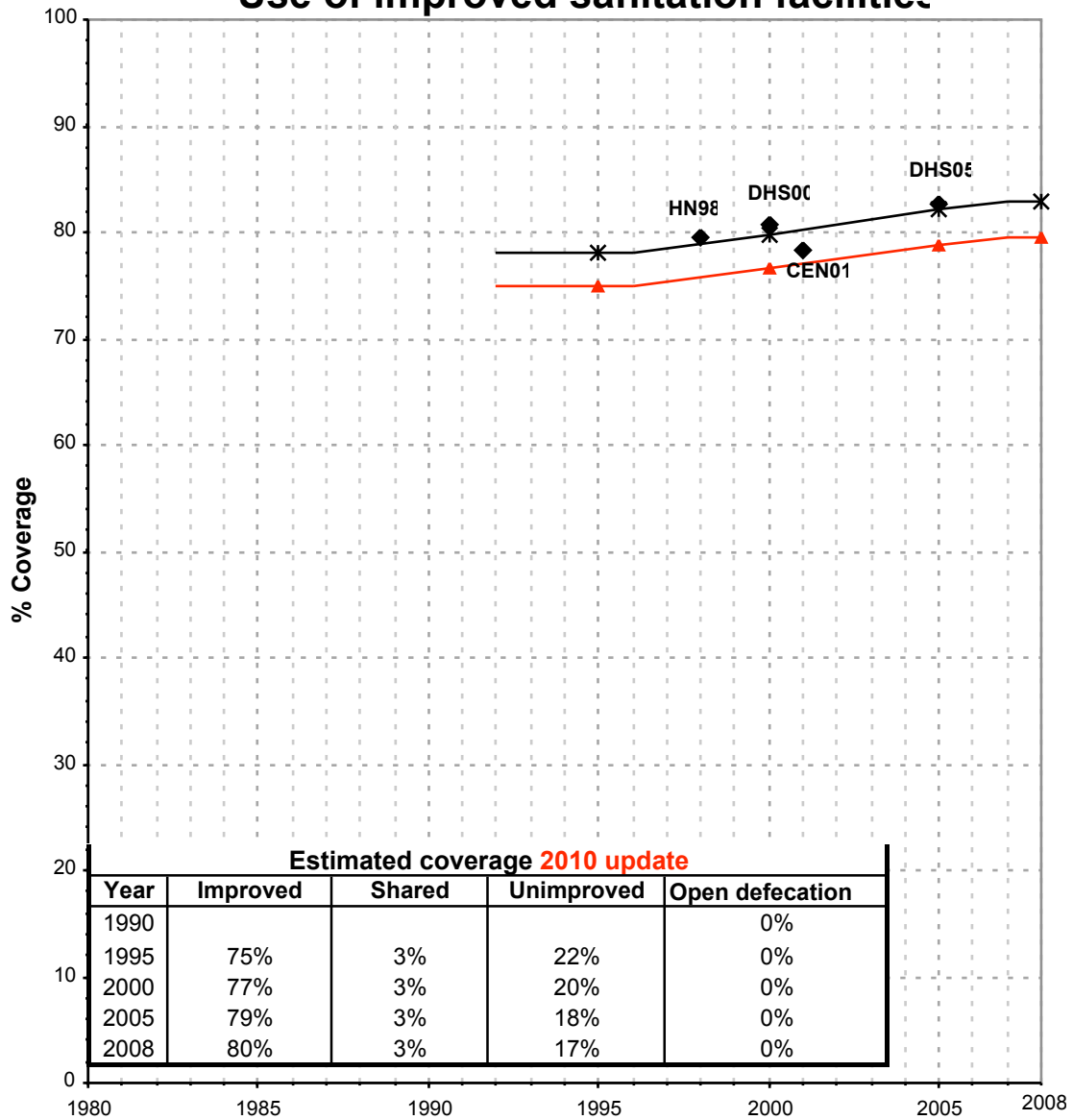
Armenia			SANITATION															
			URBAN								RURAL							
			Sewer connection		Total		Open defecation		Shared		Sewer connection		Total		Open defecation		Shared	
Source	Code	Year	Used	Not used	Used	Not used	Used	Not used	Used	Not used	Used	Not used	Used	Not used	Used	Not used	Used	Not used
Pilot Household Survey	PHS94	1994																
The Health and Nutrition Status of Women and Children	HN98	1998	95.2		99.5						32.7		79.5					
Demographic and Health Survey	DHS00	2000	90.3		98.0				6.5		19.8		80.8				5.0	
National Census	CEN01	2001			97.9								78.3					
Demographic and Health Survey	DHS05	2005	92.1		99.0		0.1		1.3		17.3		82.7		0.0		3.2	
INTEGRATED SURVEY OF LIVING STANDARDS	ISLS03	2003				84.9								22.3				
INTEGRATED SURVEY OF LIVING STANDARDS	ISLS04	2004				86.4								12.8				
INTEGRATED SURVEY OF LIVING STANDARDS	ISLS07	2007				90.4								21.1				

# Armenia - urban - Use of improved sanitation facilities



■ Used for the estimates    ✱ Estimates    ▲ JMP 2010 estimate

## Armenia - rural - Use of improved sanitation facilities



Used for the estimates    
  \* Estimates    
  JMP 2010 estimate

## Sanitation

Armenia	Sanitation coverage estimates					
	Urban (%)		Rural (%)		Total (%)	
	1995	2008	1995	2008	1995	2008
Improved facilities	95	95	75	80	88	90
Shared facilities	4	4	3	3	4	4
Unimproved facilities	1	1	22	17	8	6
Open defecation	0	0	0	0	0	0

Source: WHO/UNICEF JMP, 2010

Armenia	Urban		Rural		Total	
	1995	2008	1995	2008	1995	2008
Population (x1000)	2,137	1,962	1,086	1,115	3,223	3,077

Source: UN / Population Division, 2008

