

**WHO / UNICEF**

**Joint Monitoring Programme**  
for Water Supply and Sanitation

Estimates for the use of

**Improved Drinking-Water Sources  
and Improved Sanitation Facilities**

Updated March 2010

[childinfo.org](http://childinfo.org)

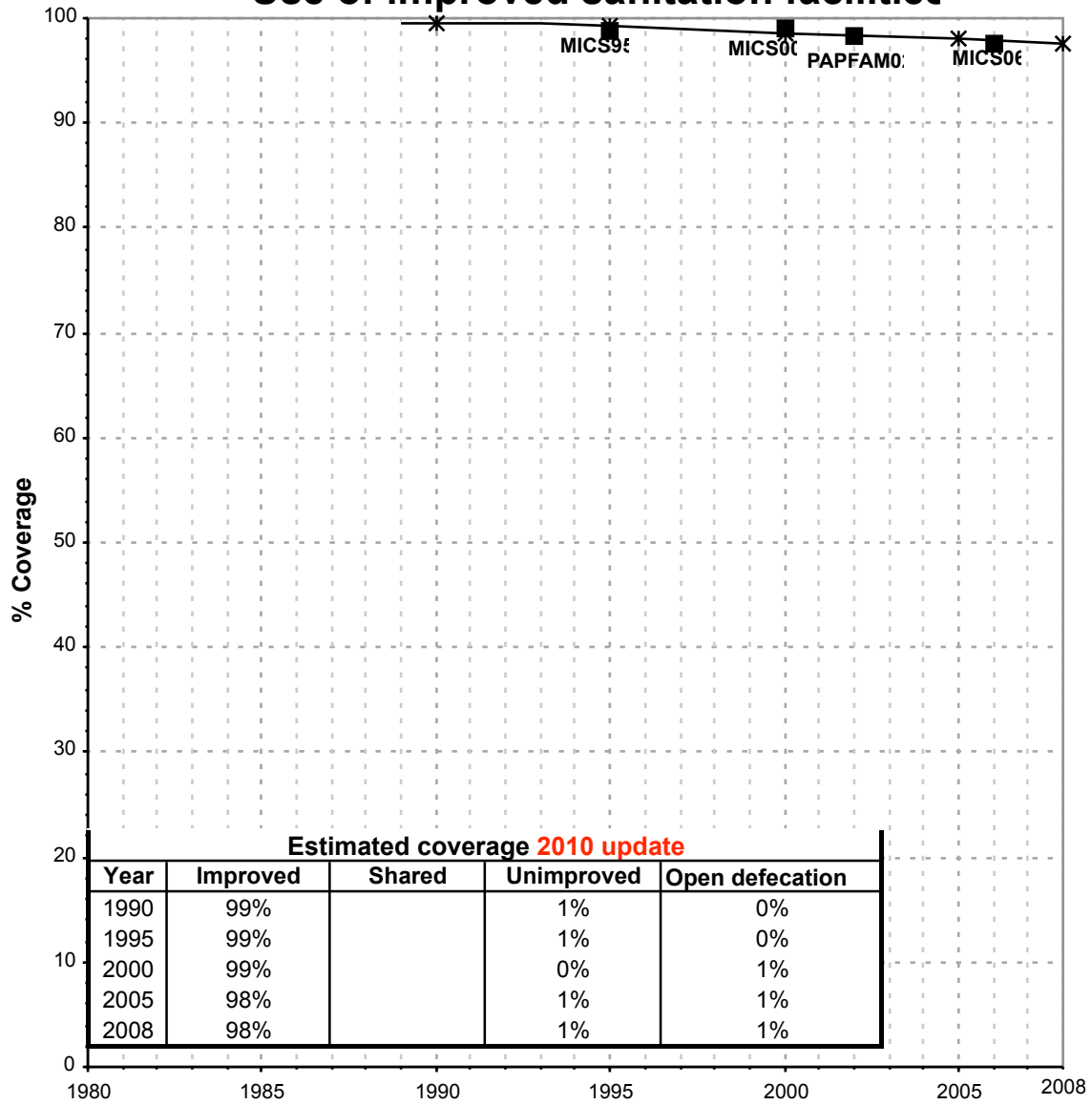
Use of sanitation facilities		MICS95			Algeria			Use of sanitation facilities		JMP99			Algeria		
Multiple Indicator Cluster Survey					Global Water Supply and Sanitation Assessment 2000.					Water Supply and Sanitation Sector Questionnaire - 1999. Form 6 sent to WHO.					
Enquete nationale sur les objectifs de la mi-decennie					1995					1999					
Original denomination	Classification	Urban	Rural	Total	Original denomination	Classification	Urban	Rural	Total						
	<b>Flush and pour flush</b>	98.0	62.0			<b>Flush and pour flush</b>	78.0	11.0	0.0						
	to piped sewer system				Population served with household connections to conventional	to piped sewer system	78.0	11.0							
	to septic tank					to septic tank									
	to pit					to pit									
	to unknown place/ not sure/DK					to unknown place/ not sure/DK									
	to elsewhere					to elsewhere									
systeme aux egouts/ fosse septique	<b>Flush/toilets</b>	98.0	62.0			<b>Flush/toilets</b>									
	to piped sewer system					to piped sewer system									
	to septic tank					to septic tank									
	to pit					to pit									
	to unknown place/ not sure/DK					to unknown place/ not sure/DK									
	to elsewhere					to elsewhere									
	<b>Private flush/toilet</b>					<b>Private flush/toilet</b>									
	to piped sewer system					to piped sewer system									
	to septic tank					to septic tank									
	to pit					to pit									
	to unknown place/ not sure/DK					to unknown place/ not sure/DK									
	to elsewhere					to elsewhere									
	<b>Public/shared flush/toilet</b>					<b>Public/shared flush/toilet</b>									
	to piped sewer system					to piped sewer system									
	to septic tank					to septic tank									
	to pit					to pit									
	to unknown place/ not sure/DK					to unknown place/ not sure/DK									
	to elsewhere					to elsewhere									
	<b>Latrines</b>					<b>Latrines</b>									
	<b>Pour flush latrines</b>					<b>Pour flush latrines</b>									
	to piped sewer system					to piped sewer system									
	to septic tank					to septic tank									
	to pit					to pit									
	to unknown place/ not sure/DK					to unknown place/ not sure/DK									
	to elsewhere					to elsewhere									
	<b>Private pour flush latrine</b>					<b>Private pour flush latrine</b>									
	to piped sewer system					to piped sewer system									
	to septic tank					to septic tank									
	to pit					to pit									
	to unknown place/ not sure/DK					to unknown place/ not sure/DK									
	to elsewhere					to elsewhere									
	<b>Public/shared pour flush latrine</b>					<b>Public/shared pour flush latrine</b>									
	to piped sewer system					to piped sewer system									
	to septic tank					to septic tank									
	to pit					to pit									
	to unknown place/ not sure/DK					to unknown place/ not sure/DK									
	to elsewhere					to elsewhere									
	<b>Dry latrines</b>					<b>Dry latrines</b>									
	<b>Improved latrines</b>					<b>Improved latrines</b>									
	Ventilated Improved Pit latrine					Ventilated Improved Pit latrine									
	Pit latrine with slab/covered latrine					Pit latrine with slab/covered latrine									
	Traditional latrine					Traditional latrine									
	Pit latrine without slab/open pit					Pit latrine without slab/open pit									
	Hanging toilet/hanging latrine					Hanging toilet/hanging latrine									
	Bucket latrine					Bucket latrine									
	Other					Other									
	<b>Private Latrines</b>					<b>Private Latrines</b>									
	Ventilated Improved Pit latrine					Ventilated Improved Pit latrine									
	Pit latrine with slab/covered latrine					Pit latrine with slab/covered latrine									
	Traditional latrine					Traditional latrine									
	Pit latrine without slab/open pit					Pit latrine without slab/open pit									
	Hanging toilet/hanging latrine					Hanging toilet/hanging latrine									
	Bucket latrine					Bucket latrine									
	Other					Other									
	<b>Public/shared Latrines</b>					<b>Public/shared Latrines</b>									
	Ventilated Improved Pit latrine					Ventilated Improved Pit latrine									
	Pit latrine with slab/covered latrine					Pit latrine with slab/covered latrine									
	Traditional latrine					Traditional latrine									
	Pit latrine without slab/open pit					Pit latrine without slab/open pit									
	Hanging toilet/hanging latrine					Hanging toilet/hanging latrine									
	Bucket latrine					Bucket latrine									
	Other					Other									
	<b>Composting toilets</b>					<b>Composting toilets</b>									
	Composting toilet (private)					Composting toilet (private)									
	Composting toilet (shared)					Composting toilet (shared)									
Other improved	<b>Other improved</b>	0.9	16.5		Population without household connections but served	<b>Other improved</b>	12.1	36.4							
	Other	0.9	16.5			Other									
	<b>No facility, bush, field</b>					<b>No facility, bush, field</b>									
	<b>Other unimproved</b>	1.1	21.5		Total population unserved	<b>Other unimproved</b>	9.9	52.6							
Not improved (data extrapolated from MICS2000)	Other	1.1	21.5			Other									
	Other					Other									
	DK/missing information					DK/missing information									
	<b>Total</b>	100.0	100.0			<b>Total</b>	100.0	100.0							
<b>Calculations</b>					<b>Calculations</b>										
<b>Estimations</b>					<b>Estimations</b>										
	sewerage connection based on MICS 2000	88.0	35.4												
<b>Access to improved sanitation :</b>		<b>99%</b>	<b>78%</b>		<b>Access to improved plus shared sanitation:</b>		<b>90%</b>	<b>47%</b>							
<b>Access to sewerage connections :</b>		<b>88%</b>	<b>35%</b>		<b>Access to sewerage connections :</b>		<b>78%</b>	<b>11%</b>							
Used for the estimates		Yes	Yes		Used for the estimates		No	No							
Used for the estimates		Yes	Yes		Used for the estimates		No	No							
<b>Ratios</b>	Shared improved facilities/all improved facilities				<b>Ratios</b>	Shared improved facilities/all improved facilities									
	Improved latrine / All latrines					Improved latrine / All latrines									
	Covered dry latrines / All dry latrines					Covered dry latrines / All dry latrines									
	VIP / All latrines					VIP / All latrines									
	Traditional latrines / All latrines					Traditional latrines / All latrines									
	Improved + traditional latrines / All latrines					Improved + traditional latrines / All latrines									
Sewerage connection among flush/pour flush					Sewerage connection among flush/pour flush										
Sewerage connection among flush					Sewerage connection among flush										
Number of people covered by the survey:					Number of people covered by the survey:										
Number of households covered by the survey:					Number of households covered by the survey:										
Total population:					Total population:		23645	5627							
<b>Comments</b>	No full information				<b>Comments</b>										





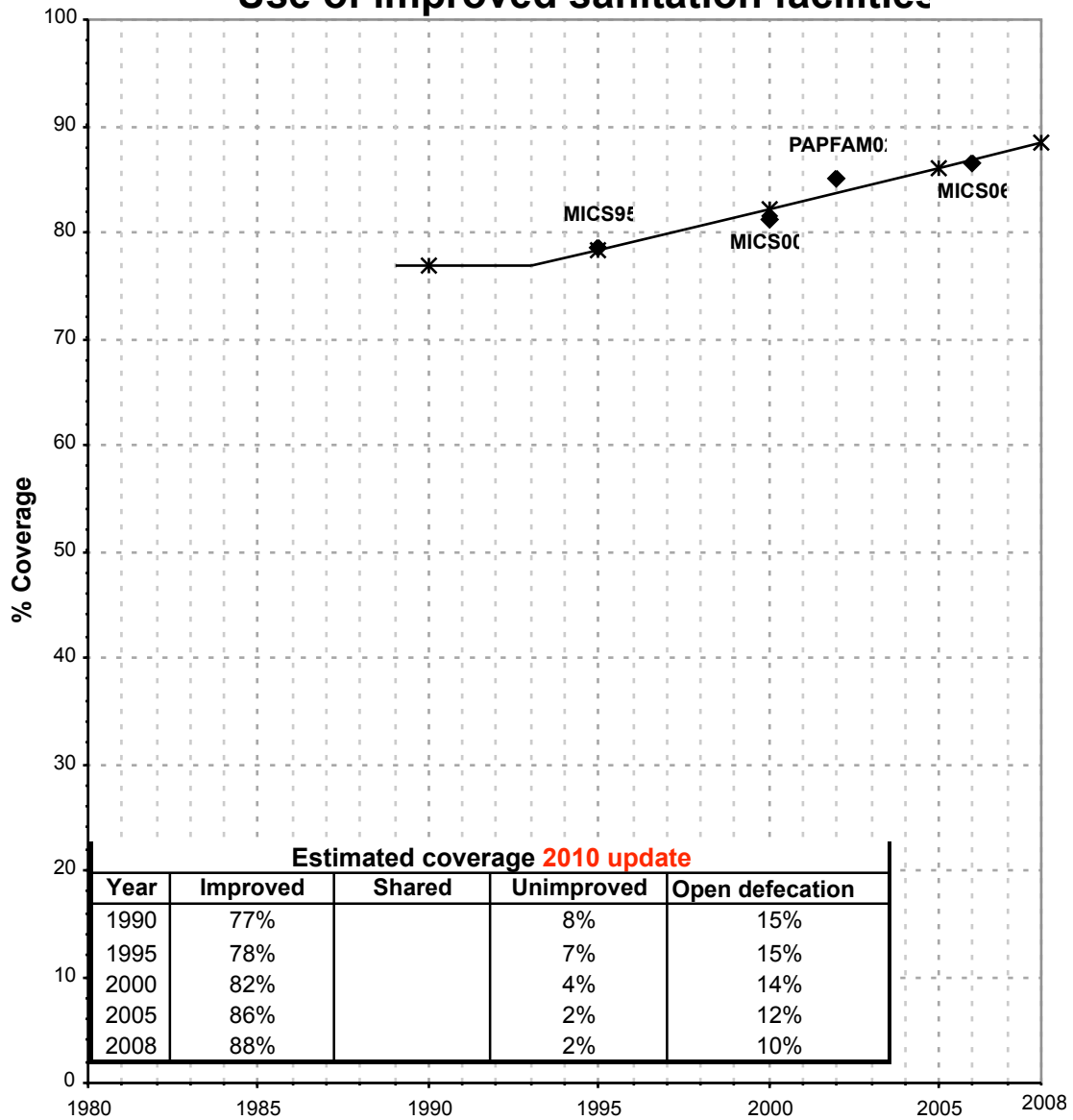
Algeria			SANITATION															
			URBAN								RURAL							
			Sewer connection		Total		Open defecation		Shared		Sewer connection		Total		Open defecation		Shared	
Source	Code	Year	Used	Not used	Used	Not used	Used	Not used	Used	Not used	Used	Not used	Used	Not used	Used	Not used	Used	Not used
Multiple Indicator Cluster Survey	MICS95	1995	88.0		98.9						35.4		78.5					
Global Water Supply and Sanitation Assessment 2000.	JMP99	1999		78.0		90.1						11.0		47.4				
Multiple Indicator Cluster Survey	MICS00	2000	85.6		99.1		0.0				43.2		81.1		13.0			
Enquête algérienne sur la santé de la famille	PAPFAM02	2002	88.4		98.4		1.5				48.6		85.1		14.9			
Multiple Indicator Cluster Survey	MICS06	2006	91.9		97.6		0.6				49.8		86.5		10.4			

# Algeria - urban - Use of improved sanitation facilities



■ Used for the estimates    \* Estimates    ▲ JMP 2010 estimate

## Algeria - rural - Use of improved sanitation facilities



◆ Used for the estimates    \*— Estimates    ▲ JMP 2010 estimate

# Sanitation

Algeria	Sanitation coverage estimates					
	Urban (%)		Rural (%)		Total (%)	
	1990	2008	1990	2008	1990	2008
Improved facilities	99	98	77	88	88	95
Shared facilities						
Unimproved facilities	1	1	8	2	5	1
Open defecation	0	1	15	10	7	4

Source: WHO/UNICEF JMP, 2010

Algeria	Urban		Rural		Total	
	1990	2008	1990	2008	1990	2008
Population (x1000)	13,168	22,435	12,114	11,939	25,283	34,373

Source: UN / Population Division, 2008

