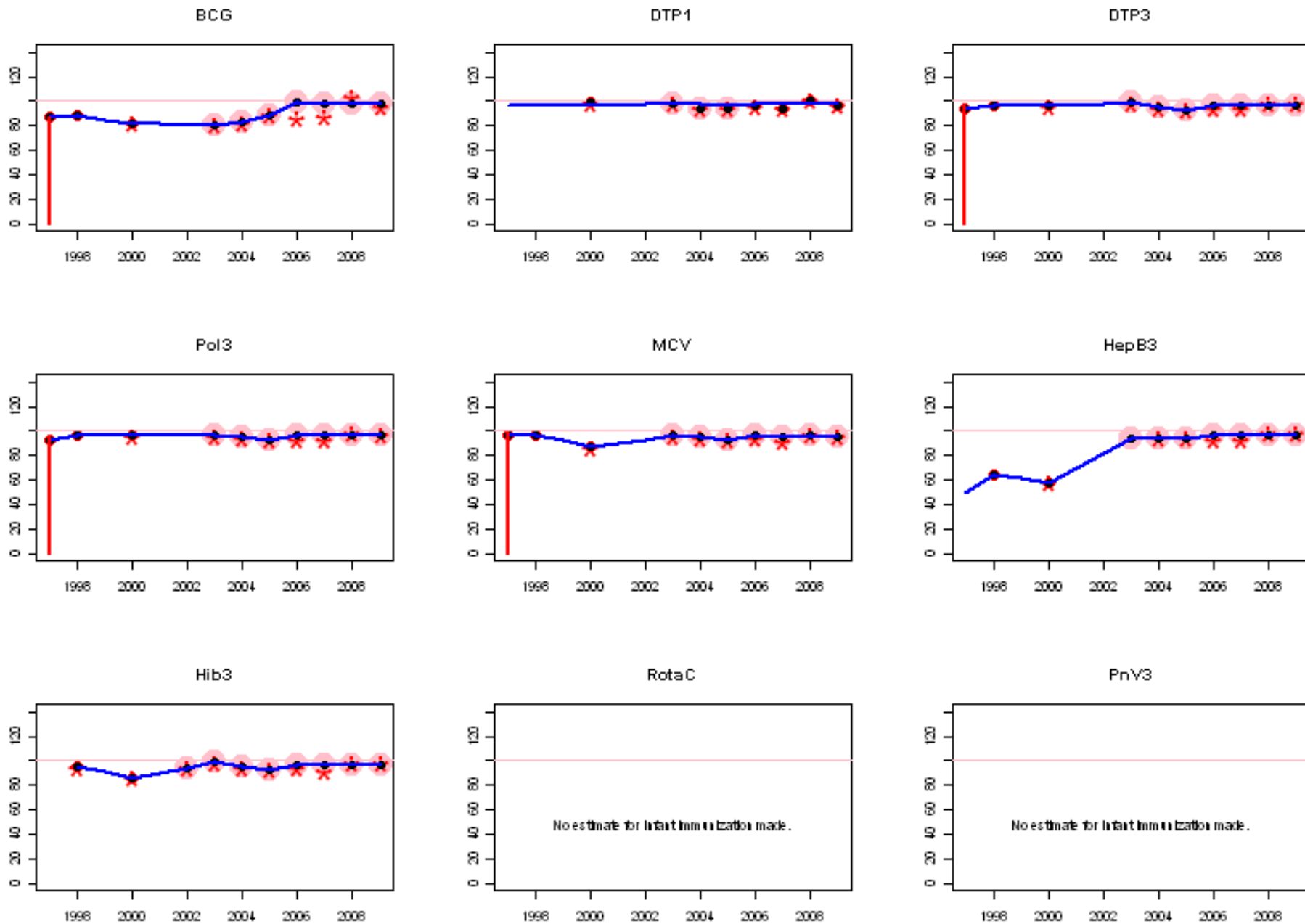
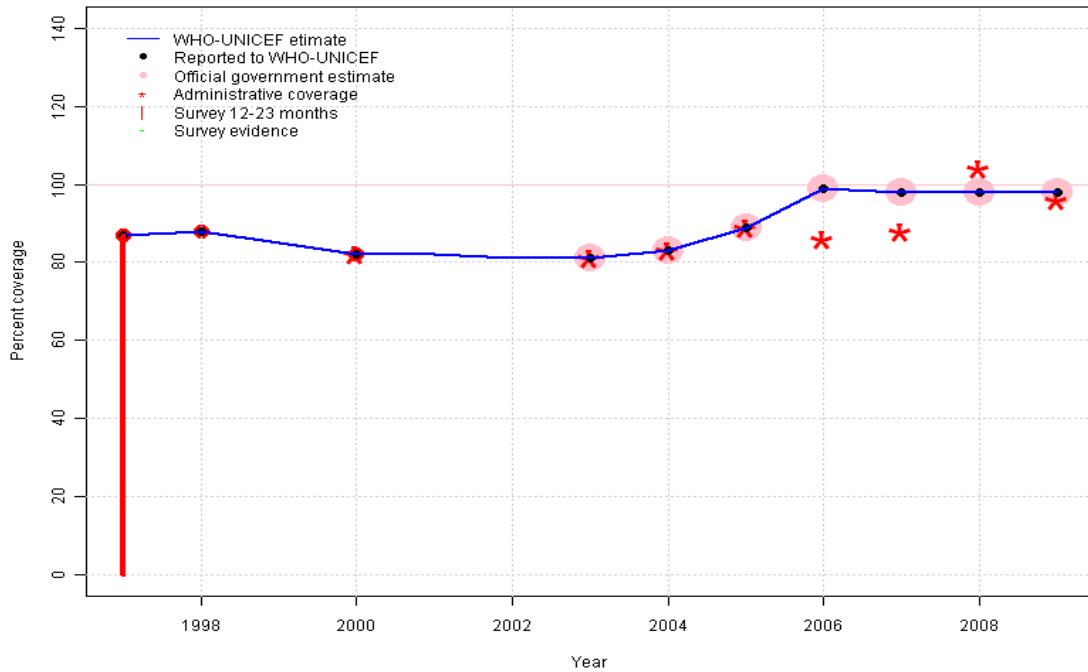


Portugal: WHO and UNICEF estimates of immunization coverage, 1997 - 2009



Portugal - BCG

PRT - BCG

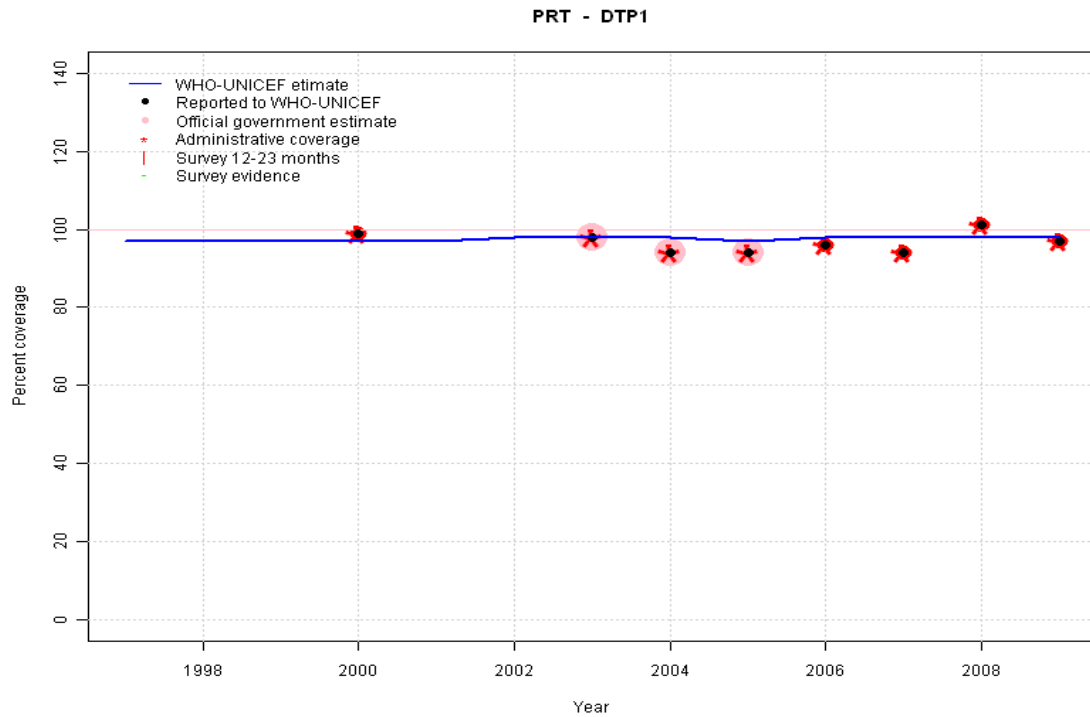


Description:

- 1997: Legacy estimate. Survey results of 87 percent with sample size 0 ignored; sample size less than 300.
- 1998: Estimate based on reported data.
- 1999: Estimate based on trend in reported data. Missing or ignored reported value estimated by interpolation between reported values of 88 percent in 1998 and 82 percent in 2000.
- 2000: Estimate based on reported data.
- 2001: Estimate based on trend in reported data. Missing or ignored reported value estimated by interpolation between reported values of 82 percent in 2000 and 81 percent in 2003.
- 2002: Estimate based on trend in reported data. Missing or ignored reported value estimated by interpolation between reported values of 82 percent in 2000 and 81 percent in 2003.
- 2003: Estimate based on reported data.
- 2004: Estimate based on reported data.
- 2005: Estimate based on reported data.
- 2006: Estimate based on reported data.
- 2007: Estimate based on reported data.
- 2008: Estimate based on reported data.
- 2009: Estimate based on reported data.

	1997	1998	1999	2000	2001	2002	2003	2004	2005	2006	2007	2008	2009
Estimate	87	88	85	82	82	81	81	83	89	99	98	98	98
Reported	87	88	NA	82	NA	NA	81	83	89	99	98	98	98
Official	NA	NA	NA	NA	NA	NA	81	83	89	99	98	98	98
Administrative	NA	NA	NA	82	NA	NA	81	83	89	86	88	104	96
Survey	NA	NA	NA	NA	NA	NA	NA	NA	NA	NA	NA	NA	NA

Portugal - DTP1



	1997	1998	1999	2000	2001	2002	2003	2004	2005	2006	2007	2008	2009
Estimate	97	97	97	97	97	98	98	98	97	98	98	98	98
Reported	NA	NA	NA	99	NA	NA	98	94	94	96	94	101	97
Official	NA	NA	NA	NA	NA	NA	98	94	94	NA	NA	NA	NA
Administrative	NA	NA	NA	99	NA	NA	98	94	94	96	94	101	97
Survey	NA	NA	NA	NA	NA	NA	NA	NA	NA	NA	NA	NA	NA

Description:

1997: Legacy estimate.

1998: Estimate calibrated to 1997 level (97 percent) and reported coverage (99 percent).

1999: Estimate calibrated to 1997 level (97 percent) and reported coverage (99 percent).

2000: Estimate calibrated to 1997 level (97 percent) and reported coverage (99 percent).

2001: Estimate calibrated to 1997 level (97 percent) and reported coverage (99 percent).

2002: Estimated DTP3 greater than estimated DTP1; DTP1 estimate based on the relationship between DTP1 and DTP3 from 282 surveys.

2003: Estimated DTP3 greater than estimated DTP1; DTP1 estimate based on the relationship between DTP1 and DTP3 from 282 surveys.

2004: Estimated DTP3 greater than estimated DTP1; DTP1 estimate based on the relationship between DTP1 and DTP3 from 282 surveys.

2005: Estimated DTP3 greater than estimated DTP1; DTP1 estimate based on the relationship between DTP1 and DTP3 from 282 surveys.

2006: Estimated DTP3 greater than estimated DTP1; DTP1 estimate based on the relationship between DTP1 and DTP3 from 282 surveys.

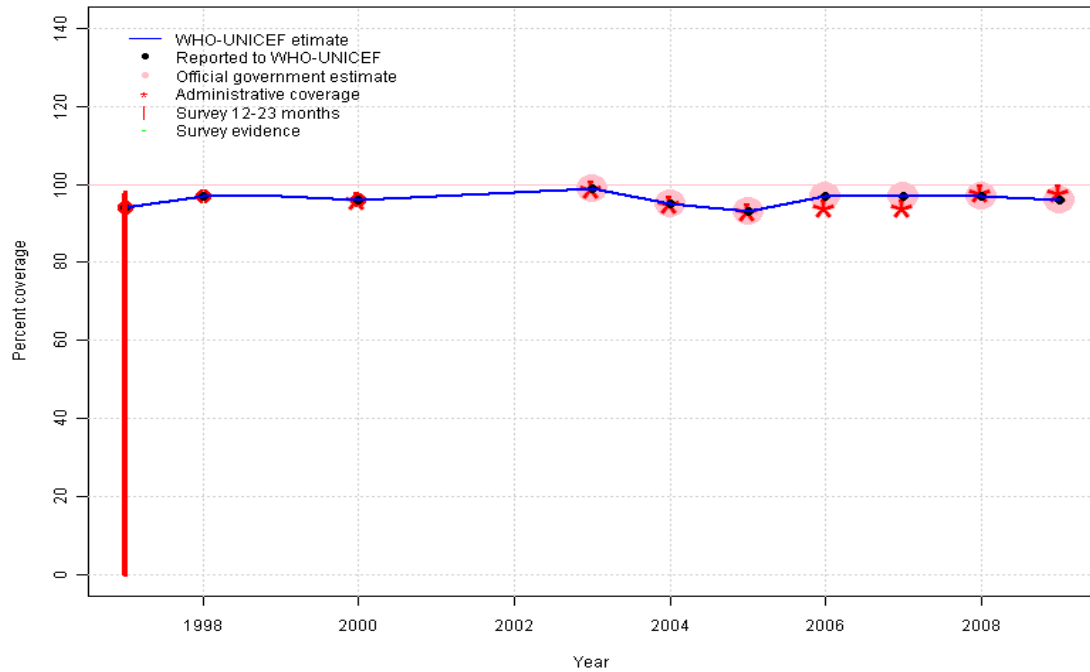
2007: Estimated DTP3 greater than estimated DTP1; DTP1 estimate based on the relationship between DTP1 and DTP3 from 282 surveys.

2008: Estimated DTP3 greater than estimated DTP1; DTP1 estimate based on the relationship between DTP1 and DTP3 from 282 surveys.

2009: Estimated DTP3 greater than estimated DTP1; DTP1 estimate based on the relationship between DTP1 and DTP3 from 282 surveys.

Portugal - DTP3

PRT - DTP3



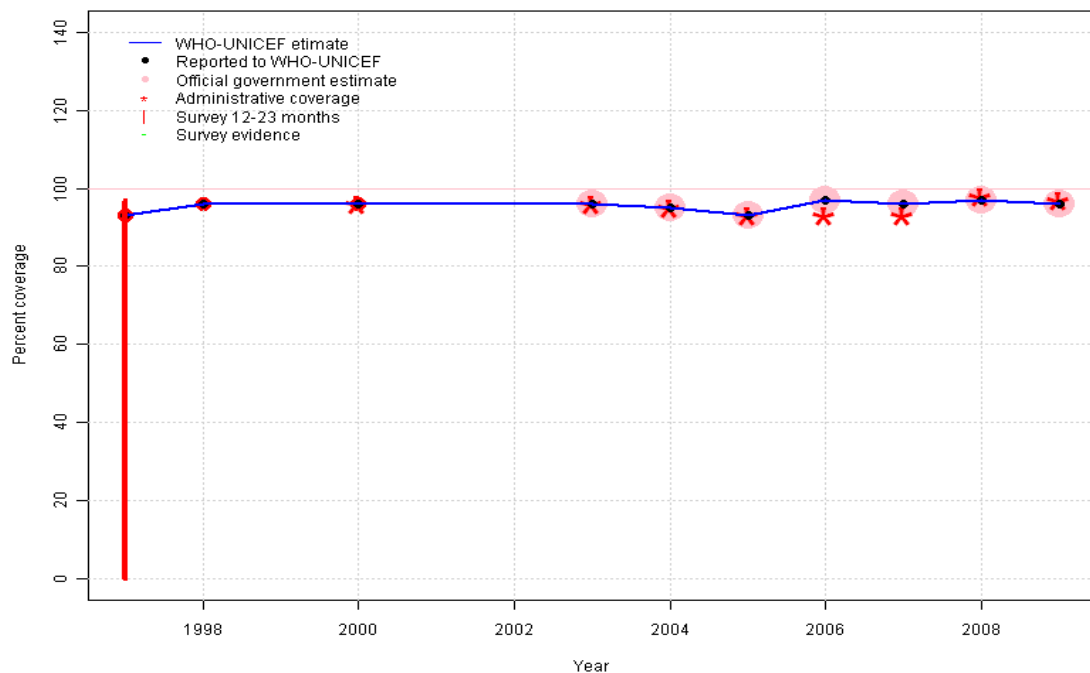
Description:

- 1997: Legacy estimate. Survey results of 98 percent with sample size 0 ignored; sample size less than 300.
- 1998: Estimate based on reported data.
- 1999: Estimate based on trend in reported data. Missing or ignored reported value estimated by interpolation between reported values of 97 percent in 1998 and 96 percent in 2000.
- 2000: Estimate based on reported data.
- 2001: Estimate based on trend in reported data. Missing or ignored reported value estimated by interpolation between reported values of 96 percent in 2000 and 99 percent in 2003.
- 2002: Estimate based on trend in reported data. Missing or ignored reported value estimated by interpolation between reported values of 96 percent in 2000 and 99 percent in 2003.
- 2003: Estimate based on reported data.
- 2004: Estimate based on reported data.
- 2005: Estimate based on reported data.
- 2006: Estimate based on reported data.
- 2007: Estimate based on reported data.
- 2008: Estimate based on reported data.
- 2009: Estimate based on reported data.

	1997	1998	1999	2000	2001	2002	2003	2004	2005	2006	2007	2008	2009
Estimate	94	97	97	96	97	98	99	95	93	97	97	97	96
Reported	94	97	NA	96	NA	NA	99	95	93	97	97	97	96
Official	NA	NA	NA	NA	NA	NA	99	95	93	97	97	97	96
Administrative	NA	NA	NA	96	NA	NA	99	95	93	94	94	98	98
Survey	NA	NA	NA	NA	NA	NA	NA	NA	NA	NA	NA	NA	NA

Portugal - Pol3

PRT - Pol3



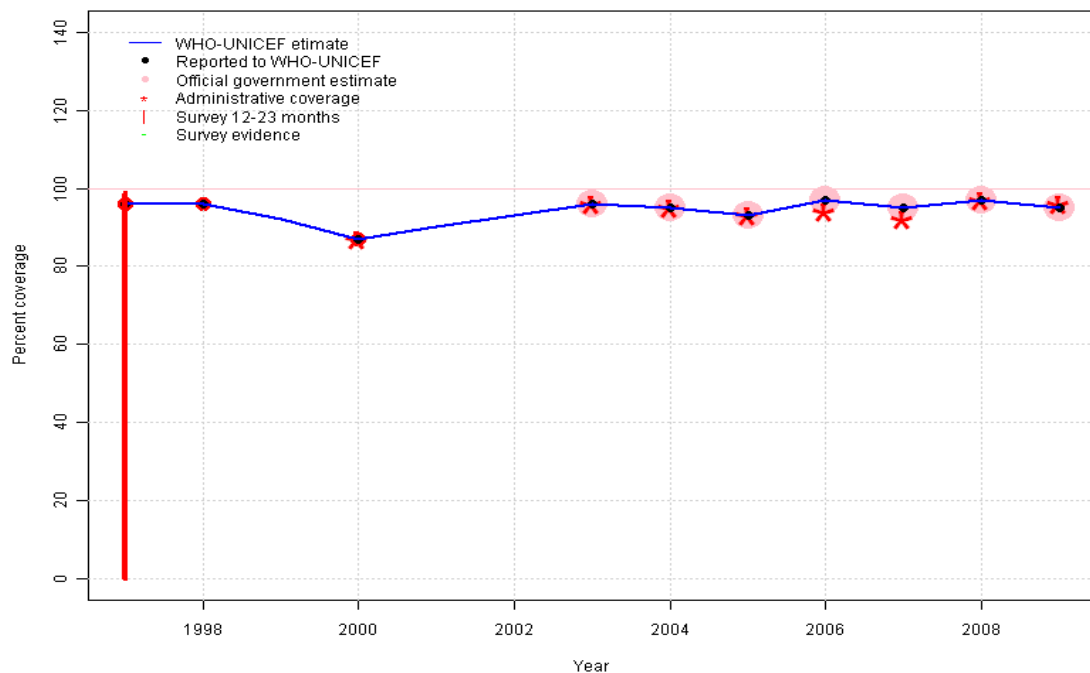
Description:

- 1997: Legacy estimate. Survey results of 97 percent with sample size 0 ignored; sample size less than 300.
- 1998: Estimate based on reported data.
- 1999: Estimate based on trend in reported data. Missing or ignored reported value estimated by interpolation between reported values of 96 percent in 1998 and 96 percent in 2000.
- 2000: Estimate based on reported data.
- 2001: Estimate based on trend in reported data. Missing or ignored reported value estimated by interpolation between reported values of 96 percent in 2000 and 96 percent in 2003.
- 2002: Estimate based on trend in reported data. Missing or ignored reported value estimated by interpolation between reported values of 96 percent in 2000 and 96 percent in 2003.
- 2003: Estimate based on reported data.
- 2004: Estimate based on reported data.
- 2005: Estimate based on reported data.
- 2006: Estimate based on reported data.
- 2007: Estimate based on reported data.
- 2008: Estimate based on reported data.
- 2009: Estimate based on reported data.

	1997	1998	1999	2000	2001	2002	2003	2004	2005	2006	2007	2008	2009
Estimate	93	96	96	96	96	96	96	95	93	97	96	97	96
Reported	93	96	NA	96	NA	NA	96	95	93	97	96	97	96
Official	NA	NA	NA	NA	NA	NA	96	95	93	97	96	97	96
Administrative	NA	NA	NA	96	NA	NA	96	95	93	93	93	98	97
Survey	NA	NA	NA	NA	NA	NA	NA	NA	NA	NA	NA	NA	NA

Portugal - MCV

PRT - MCV



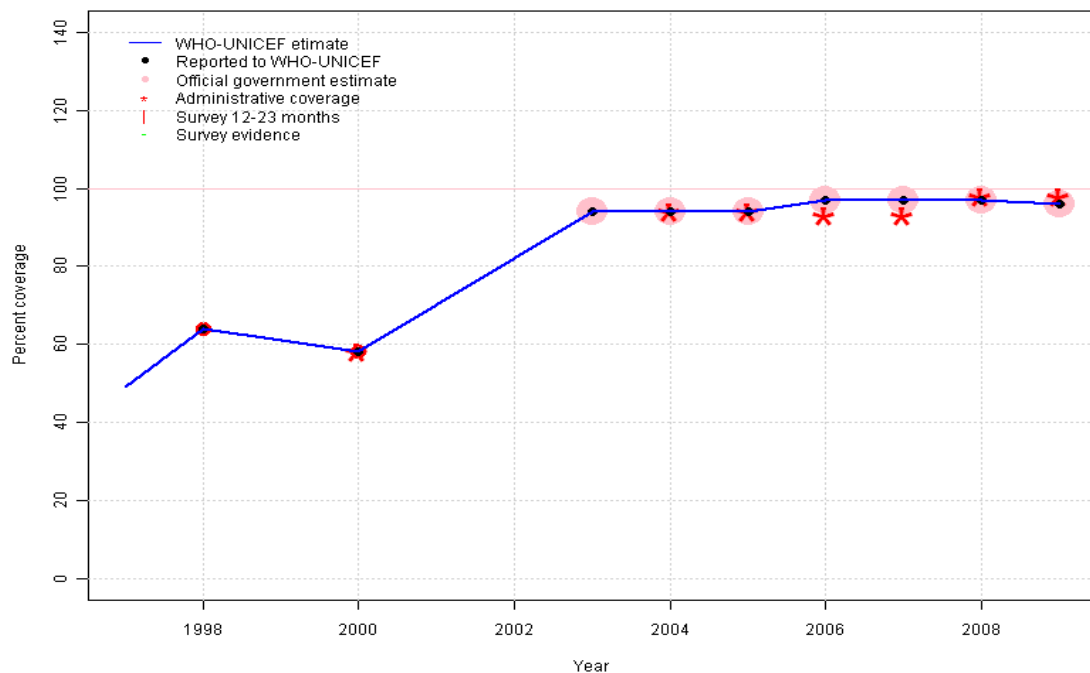
Description:

- 1997: Legacy estimate. Survey results of 99 percent with sample size 0 ignored; sample size less than 300.
- 1998: Estimate based on reported data.
- 1999: Estimate based on trend in reported data. Missing or ignored reported value estimated by interpolation between reported values of 96 percent in 1998 and 87 percent in 2000.
- 2000: Estimate based on reported data.
- 2001: Estimate based on trend in reported data. Missing or ignored reported value estimated by interpolation between reported values of 87 percent in 2000 and 96 percent in 2003.
- 2002: Estimate based on trend in reported data. Missing or ignored reported value estimated by interpolation between reported values of 87 percent in 2000 and 96 percent in 2003.
- 2003: Estimate based on reported data.
- 2004: Estimate based on reported data.
- 2005: Estimate based on reported data.
- 2006: Estimate based on reported data.
- 2007: Estimate based on reported data.
- 2008: Estimate based on reported data.
- 2009: Estimate based on reported data.

	1997	1998	1999	2000	2001	2002	2003	2004	2005	2006	2007	2008	2009
Estimate	96	96	92	87	90	93	96	95	93	97	95	97	95
Reported	96	96	NA	87	NA	NA	96	95	93	97	95	97	95
Official	NA	NA	NA	NA	NA	NA	96	95	93	97	95	97	95
Administrative	NA	NA	NA	87	NA	NA	96	95	93	94	92	97	96
Survey	NA	NA	NA	NA	NA	NA	NA	NA	NA	NA	NA	NA	NA

Portugal - HepB3

PRT - HepB3



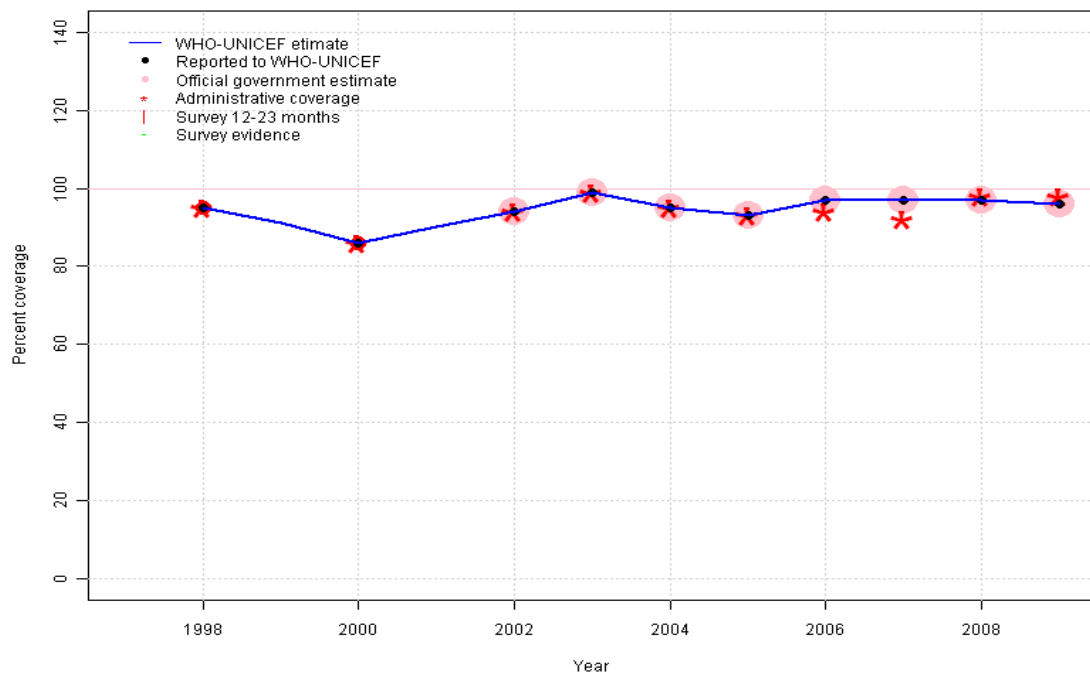
Description:

- 1997: Legacy estimate.
- 1998: Estimate is based on the reported data.
- 1999: Estimate based on trend in reported data. Missing or ignored reported value estimated by interpolation between reported values of 64 percent in 1998 and 58 percent in 2000.
- 2000: Estimate based on reported data.
- 2001: Estimate based on trend in reported data. Missing or ignored reported value estimated by interpolation between reported values of 58 percent in 2000 and 94 percent in 2003.
- 2002: Estimate based on trend in reported data. Missing or ignored reported value estimated by interpolation between reported values of 58 percent in 2000 and 94 percent in 2003.
- 2003: Estimate based on reported data.
- 2004: Estimate based on reported data.
- 2005: Estimate based on reported data.
- 2006: Estimate based on reported data.
- 2007: Estimate based on reported data.
- 2008: Estimate based on reported data.
- 2009: Estimate based on reported data.

	1997	1998	1999	2000	2001	2002	2003	2004	2005	2006	2007	2008	2009
Estimate	49	64	61	58	70	82	94	94	94	97	97	97	96
Reported	NA	64	NA	58	NA	NA	94	94	94	97	97	97	96
Official	NA	NA	NA	NA	NA	NA	94	94	94	97	97	97	96
Administrative	NA	NA	NA	58	NA	NA	NA	94	94	93	93	98	98
Survey	NA	NA	NA	NA	NA	NA	NA	NA	NA	NA	NA	NA	NA

Portugal - Hib3

PRT - Hib3

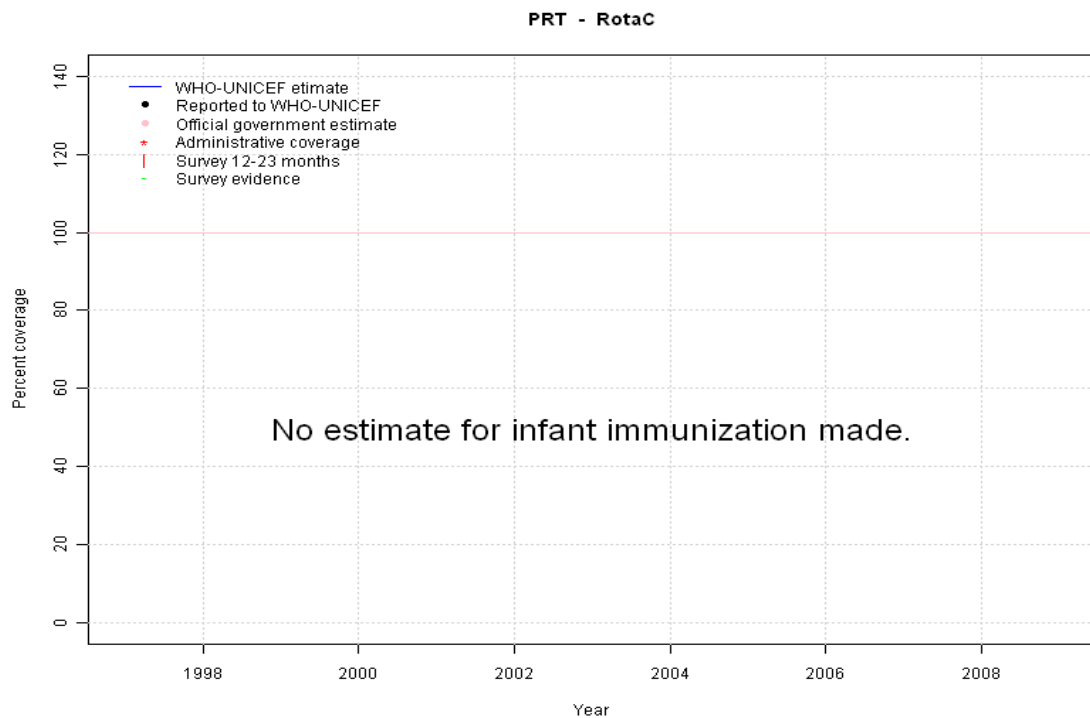


Description:

- 1998: Estimate based on reported data. Hib introduced nationally in 2000 reporting started in 1998
- 1999: Estimate based on reported data. Missing or ignored reported value estimated by interpolation between reported values of 95 percent in 1998 and 86 percent in 2000.
- 2000: Estimate based on reported data.
- 2001: Estimate based on reported data. Missing or ignored reported value estimated by interpolation between reported values of 86 percent in 2000 and 94 percent in 2002.
- 2002: Estimate based on reported data.
- 2003: Estimate based on reported data.
- 2004: Estimate based on reported data.
- 2005: Estimate based on reported data.
- 2006: Estimate based on reported data.
- 2007: Estimate based on reported data.
- 2008: Estimate based on reported data.
- 2009: Estimate based on reported data.

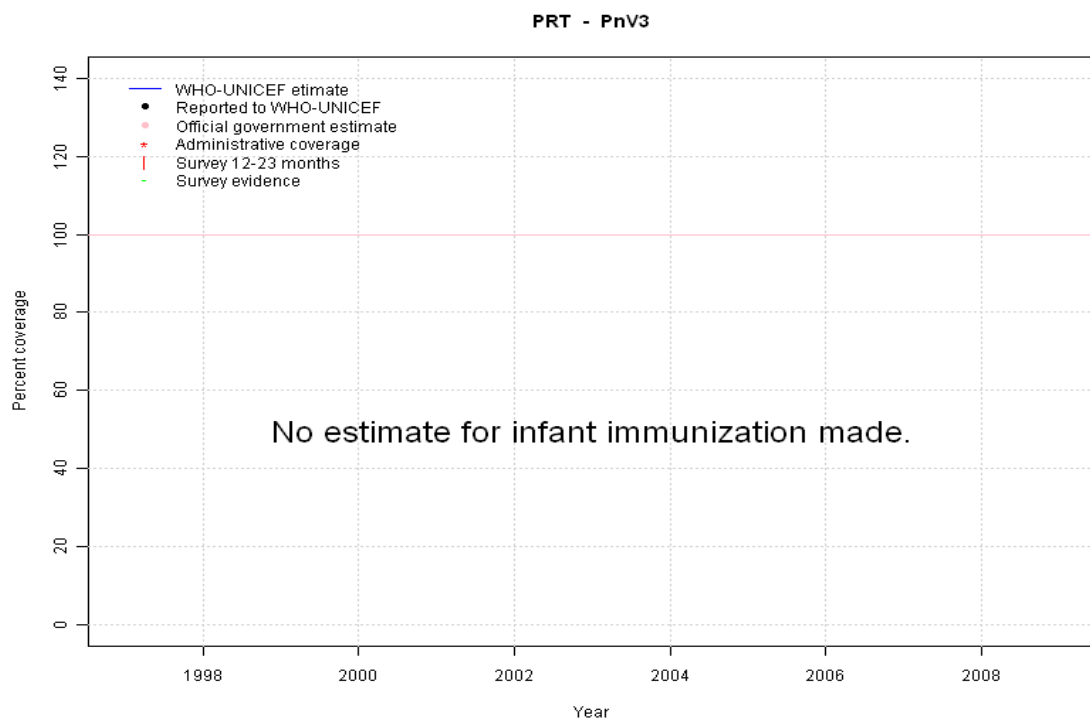
	1997	1998	1999	2000	2001	2002	2003	2004	2005	2006	2007	2008	2009
Estimate	NA	95	91	86	90	94	99	95	93	97	97	97	96
Reported	NA	95	NA	86	NA	94	99	95	93	97	97	97	96
Official	NA	NA	NA	NA	NA	94	99	95	93	97	97	97	96
Administrative	NA	95	NA	86	NA	94	99	95	93	94	92	98	98
Survey	NA	NA	NA	NA	NA	NA	NA	NA	NA	NA	NA	NA	NA

Portugal - RotaC



	1997	1998	1999	2000	2001	2002	2003	2004	2005	2006	2007	2008	2009
Estimate	NA	NA	NA	NA	NA	NA	NA	NA	NA	NA	NA	NA	NA
Reported	NA	NA	NA	NA	NA	NA	NA	NA	NA	NA	NA	NA	NA
Official	NA	NA	NA	NA	NA	NA	NA	NA	NA	NA	NA	NA	NA
Administrative	NA	NA	NA	NA	NA	NA	NA	NA	NA	NA	NA	NA	NA
Survey	NA	NA	NA	NA	NA	NA	NA	NA	NA	NA	NA	NA	NA

Portugal - PnV3



	1997	1998	1999	2000	2001	2002	2003	2004	2005	2006	2007	2008	2009
Estimate	NA	NA	NA	NA	NA	NA	NA	NA	NA	NA	NA	NA	NA
Reported	NA	NA	NA	NA	NA	NA	NA	NA	NA	NA	NA	NA	NA
Official	NA	NA	NA	NA	NA	NA	NA	NA	NA	NA	NA	NA	NA
Administrative	NA	NA	NA	NA	NA	NA	NA	NA	NA	NA	NA	NA	NA
Survey	NA	NA	NA	NA	NA	NA	NA	NA	NA	NA	NA	NA	NA

Portugal - survey details

1997 MOH, reported in response to draft estimates, June 2001.

Vaccine	Confirmation method	Coverage	Age cohort	Sample	Cards seen
BCG	Card or History	87	12-23 m	0	0

DTP3	Card or History	98	12-23 m	0	0
MCV	Card or History	99	12-23 m	0	0
Pol3	Card or History	97	12-23 m	0	0

Further information and estimates for 1980-1996 are available at:

http://www.childinfo.org/immunization_countryreports.html

http://www.who.int/immunization_monitoring/routine/immunization_coverage/en/index4.html