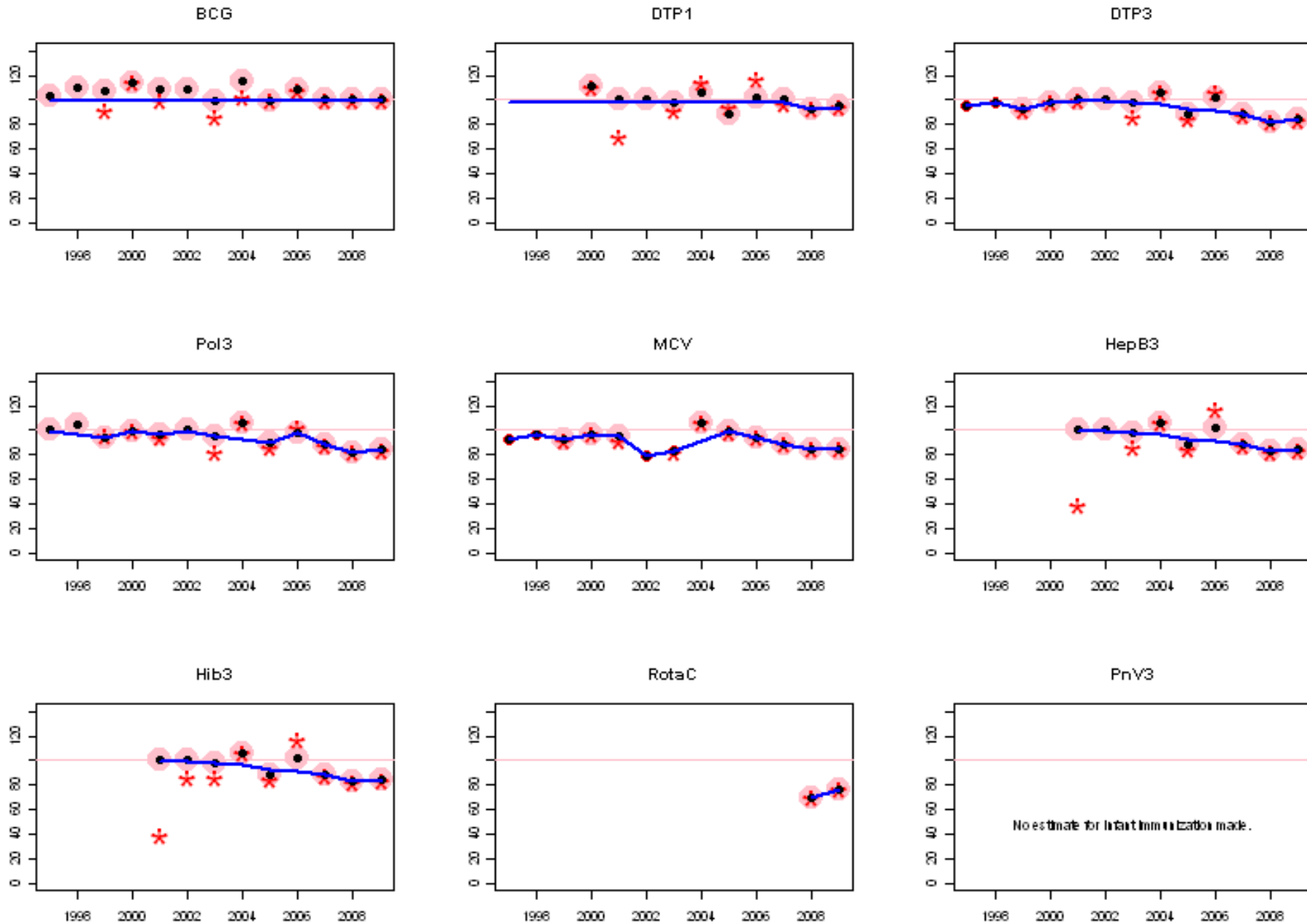
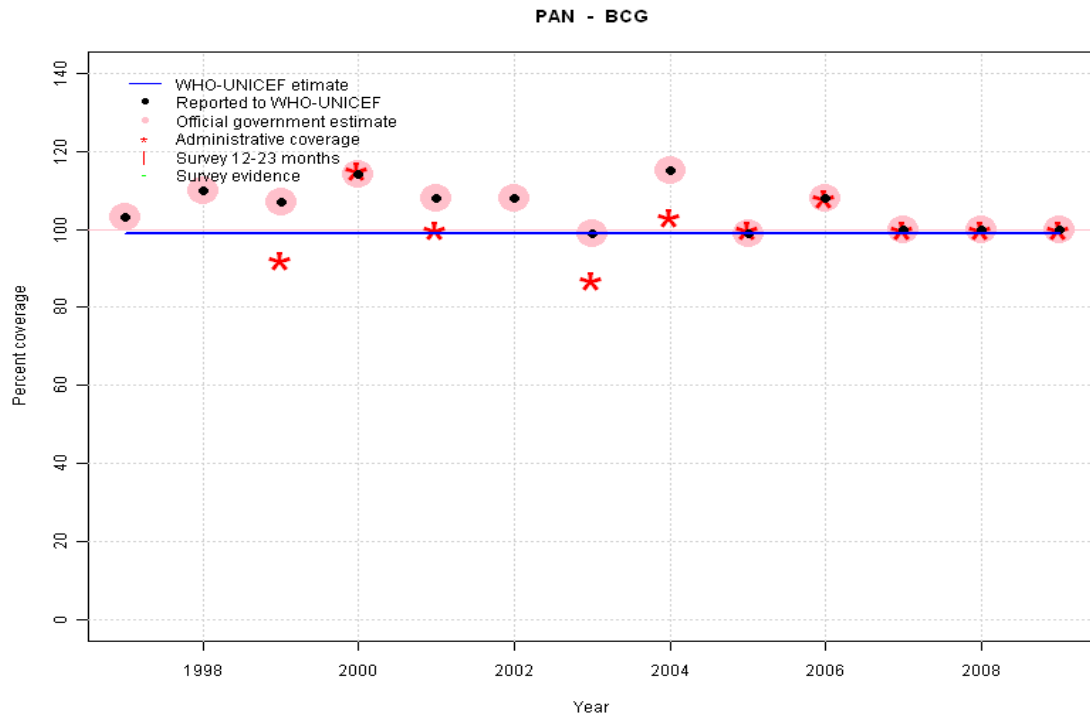


Panama: WHO and UNICEF estimates of immunization coverage, 1997 - 2009



# Panama - BCG

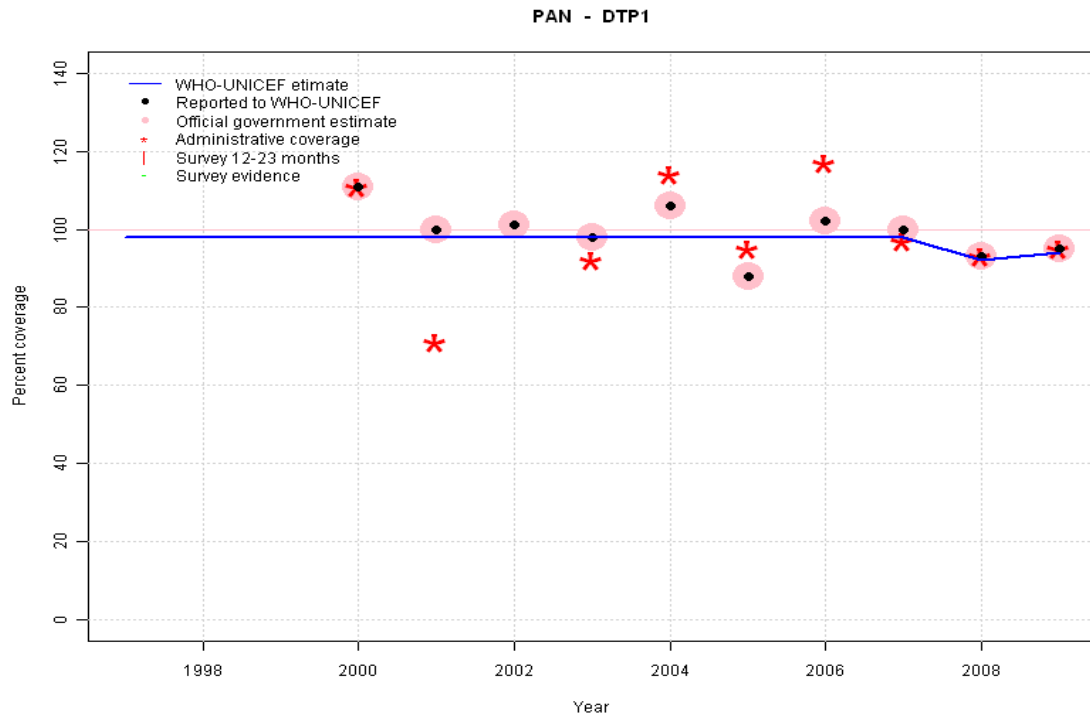


	1997	1998	1999	2000	2001	2002	2003	2004	2005	2006	2007	2008	2009
Estimate	99	99	99	99	99	99	99	99	99	99	99	99	99
Reported	103	110	107	114	108	108	99	115	99	108	100	100	100
Official	103	110	107	114	108	108	99	115	99	108	100	100	100
Administrative	NA	NA	92	115	100	NA	87	103	100	108	100	100	100
Survey	NA	NA	NA	NA	NA	NA	NA	NA	NA	NA	NA	NA	NA

## Description:

- 1997: Legacy estimate. 1997 reported data (103 percent) ignored; greater than 100 percent.
- 1998: Estimate based on trend in reported data. Missing or ignored reported value estimated by extrapolation from 2003 reported value of 99 percent. 1998 reported data (110 percent) ignored; greater than 100 percent.
- 1999: Estimate based on trend in reported data. Missing or ignored reported value estimated by extrapolation from 2003 reported value of 99 percent. 1999 reported data (107 percent) ignored; greater than 100 percent.
- 2000: Estimate based on trend in reported data. Missing or ignored reported value estimated by extrapolation from 2003 reported value of 99 percent. 2000 reported data (114 percent) ignored; greater than 100 percent.
- 2001: Estimate based on trend in reported data. Missing or ignored reported value estimated by extrapolation from 2003 reported value of 99 percent. 2001 reported data (108 percent) ignored; greater than 100 percent.
- 2002: Estimate based on trend in reported data. Missing or ignored reported value estimated by extrapolation from 2003 reported value of 99 percent. 2002 reported data (108 percent) ignored; greater than 100 percent.
- 2003: Estimate based on reported data.
- 2004: Estimate based on trend in reported data. Missing or ignored reported value estimated by interpolation between reported values of 99 percent in 2003 and 99 percent in 2005. 2004 reported data (115 percent) ignored; greater than 100 percent. 2004 reported data (115 percent) inconsistent with data from other years.
- 2005: Estimate based on reported data.
- 2006: Estimate based on trend in reported data. Missing or ignored reported value estimated by interpolation between reported values of 99 percent in 2005 and 100 percent in 2007. 2006 reported data (108 percent) ignored; greater than 100 percent.
- 2007: Estimate based on reported data.
- 2008: Estimate based on reported data.
- 2009: Estimate based on reported data.

# Panama - DTP1



	1997	1998	1999	2000	2001	2002	2003	2004	2005	2006	2007	2008	2009
Estimate	98	98	98	98	98	98	98	98	98	98	98	92	94
Reported	NA	NA	NA	111	100	101	98	106	88	102	100	93	95
Official	NA	NA	NA	111	100	101	98	106	88	102	100	93	95
Administrative	NA	NA	NA	111	71	NA	92	114	95	117	97	93	95
Survey	NA	NA	NA	NA	NA	NA	NA	NA	NA	NA	NA	NA	NA

## Description:

1997: Legacy estimate.

1998: Estimate calibrated to 1997 level (98 percent) and reported coverage (99 percent).

1999: Estimate calibrated to 1997 level (98 percent) and reported coverage (99 percent).

2000: Estimate calibrated to 1997 level (98 percent) and reported coverage (99 percent). 2000 reported data (111 percent) ignored; greater than 100 percent.

2001: Estimated DTP3 greater than estimated DTP1; DTP1 estimate based on the relationship between DTP1 and DTP3 from 282 surveys.

2002: Estimated DTP3 greater than estimated DTP1; DTP1 estimate based on the relationship between DTP1 and DTP3 from 282 surveys.

2003: Estimated DTP3 greater than estimated DTP1; DTP1 estimate based on the relationship between DTP1 and DTP3 from 282 surveys.

2004: Estimate calibrated to 1997 level (98 percent) and reported coverage (99 percent). 2004 reported data (106 percent) ignored; greater than 100 percent.

2005: Estimate calibrated to 1997 level (98 percent) and reported coverage (99 percent). 2005 reported data (88 percent) inconsistent with data from other years. Denominator based on number of children receiving BCG

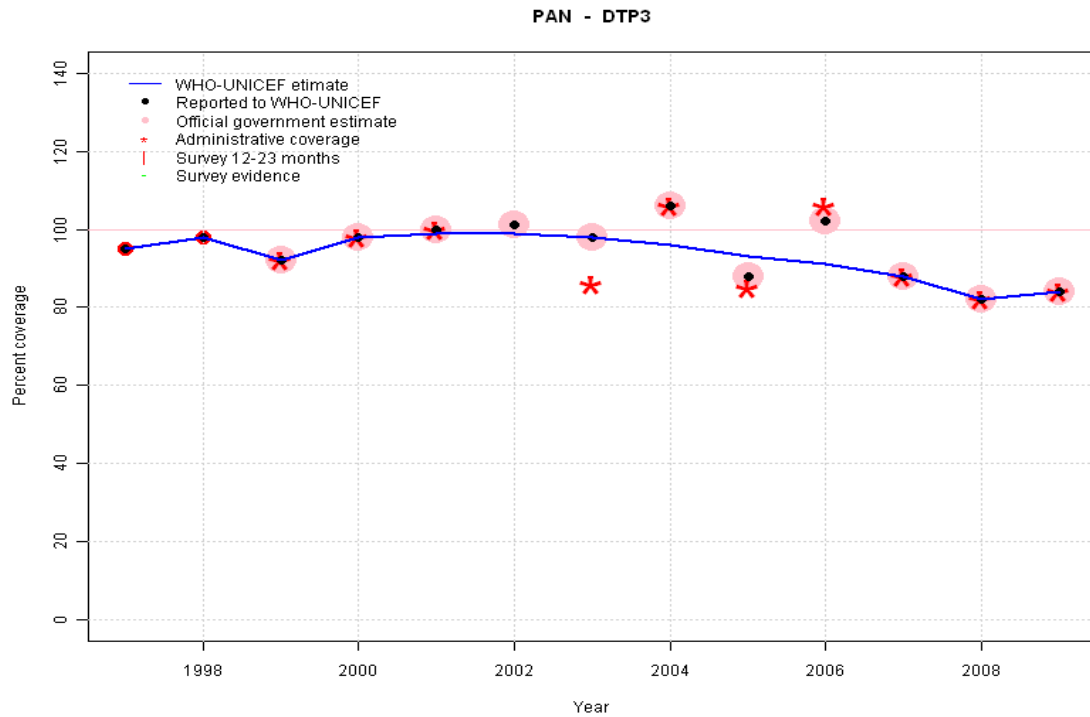
2006: Estimate calibrated to 1997 level (98 percent) and reported coverage (99 percent). 2006 reported data (102 percent) ignored; greater than 100 percent.

2007: Estimate calibrated to 1997 level (98 percent) and reported coverage (99 percent). Denominator based on number of children receiving BCG

2008: Estimate calibrated to 1997 level (98 percent) and reported coverage (93 percent). Denominator based on number of children receiving BCG

2009: Estimate calibrated to 1997 level (98 percent) and reported coverage (95 percent).

# Panama - DTP3



	1997	1998	1999	2000	2001	2002	2003	2004	2005	2006	2007	2008	2009
Estimate	95	98	92	98	99	99	98	96	93	91	88	82	84
Reported	95	98	92	98	100	101	98	106	88	102	88	82	84
Official	NA	NA	92	98	100	101	98	106	88	102	88	82	84
Administrative	NA	NA	92	98	100	NA	86	106	85	106	88	82	84
Survey	NA	NA	NA	NA	NA	NA	NA	NA	NA	NA	NA	NA	NA

## Description:

1997: Legacy estimate.

1998: Estimate based on reported data.

1999: Estimate based on reported data.

2000: Estimate based on reported data.

2001: Estimate based on reported data.

2002: Estimate based on trend in reported data. Missing or ignored reported value estimated by interpolation between reported values of 100 percent in 2001 and 98 percent in 2003. 2002 reported data (101 percent) ignored; greater than 100 percent.

2003: Estimate based on reported data.

2004: Estimate based on trend in reported data. Missing or ignored reported value estimated by interpolation between reported values of 98 percent in 2003 and 88 percent in 2007. 2004 reported data (106 percent) ignored; greater than 100 percent.

2005: Estimate based on trend in reported data. Missing or ignored reported value estimated by interpolation between reported values of 98 percent in 2003 and 88 percent in 2007. 2005 reported data (88 percent) inconsistent with data from other years. Denominator based on number of children receiving BCG

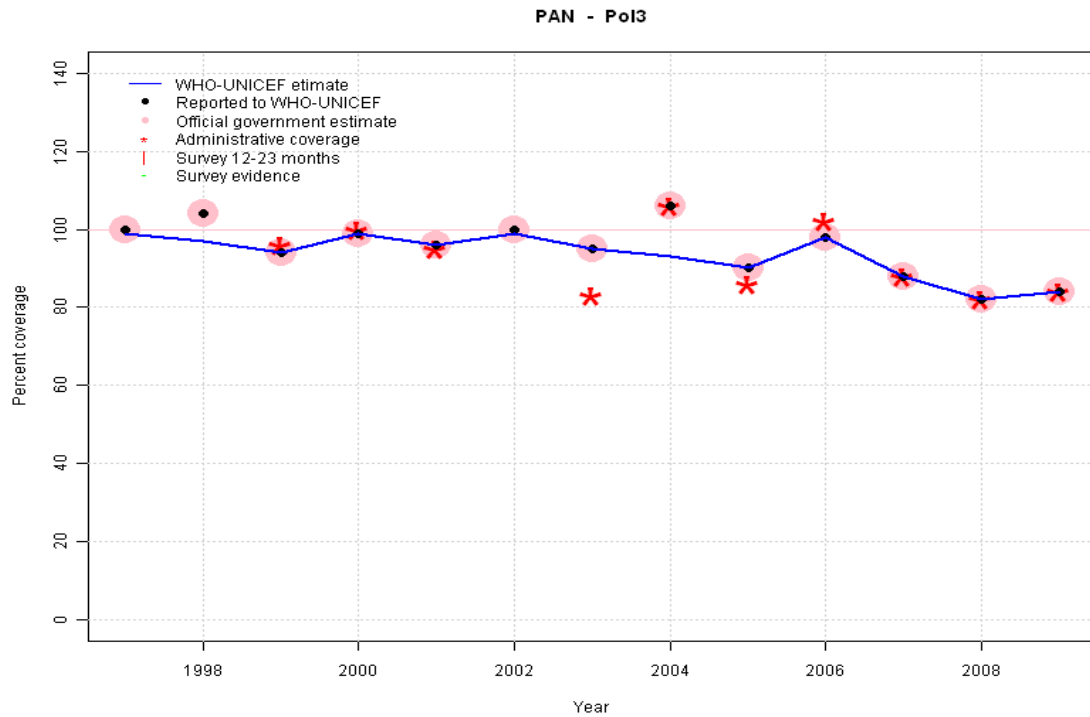
2006: Estimate based on trend in reported data. Missing or ignored reported value estimated by interpolation between reported values of 98 percent in 2003 and 88 percent in 2007. 2006 reported data (102 percent) ignored; greater than 100 percent. 2006 reported data (102 percent) inconsistent with data from other years.

2007: Estimate based on reported data. Denominator based on number of children receiving BCG

2008: Estimate based on reported data. Denominator based on number of children receiving BCG

2009: Estimate based on reported data.

# Panama - Pol3



## Description:

1997: Legacy estimate.

1998: Estimate based on trend in reported data. Missing or ignored reported value estimated by interpolation between reported values of 100 percent in 1997 and 94 percent in 1999. 1998 reported data (104 percent) ignored; greater than 100 percent.

1999: Estimate based on reported data.

2000: Estimate based on reported data.

2001: Estimate based on reported data.

2002: Estimate based on reported data.

2003: Estimate based on reported data.

2004: Estimate based on trend in reported data. Missing or ignored reported value estimated by interpolation between reported values of 95 percent in 2003 and 90 percent in 2005. 2004 reported data (106 percent) ignored; greater than 100 percent. 2004 reported data (106 percent) inconsistent with data from other years.

2005: Estimate based on reported data. Denominator based on number of children receiving BCG

2006: Estimate based on reported data.

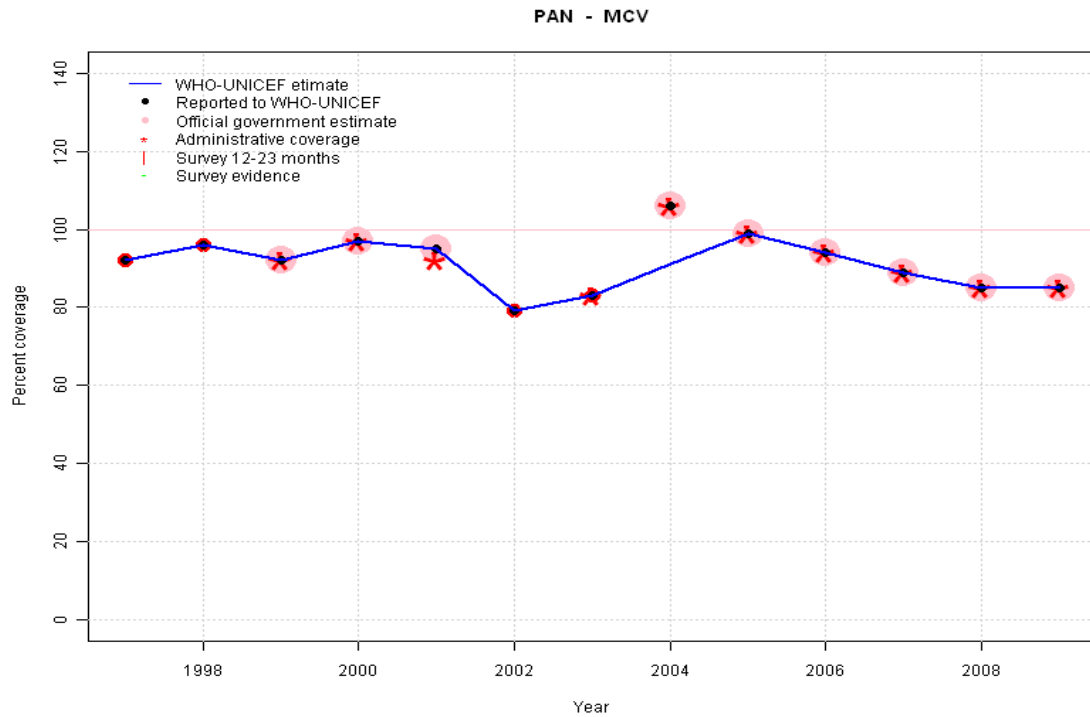
2007: Estimate based on reported data. Denominator based on number of children receiving BCG

2008: Estimate based on reported data. Denominator based on number of children receiving BCG

2009: Estimate based on reported data.

	1997	1998	1999	2000	2001	2002	2003	2004	2005	2006	2007	2008	2009
Estimate	99	97	94	99	96	99	95	93	90	98	88	82	84
Reported	100	104	94	99	96	100	95	106	90	98	88	82	84
Official	100	104	94	99	96	100	95	106	90	98	88	82	84
Administrative	NA	NA	96	100	95	NA	83	106	86	102	88	82	84
Survey	NA	NA	NA	NA	NA	NA	NA	NA	NA	NA	NA	NA	NA

# Panama - MCV

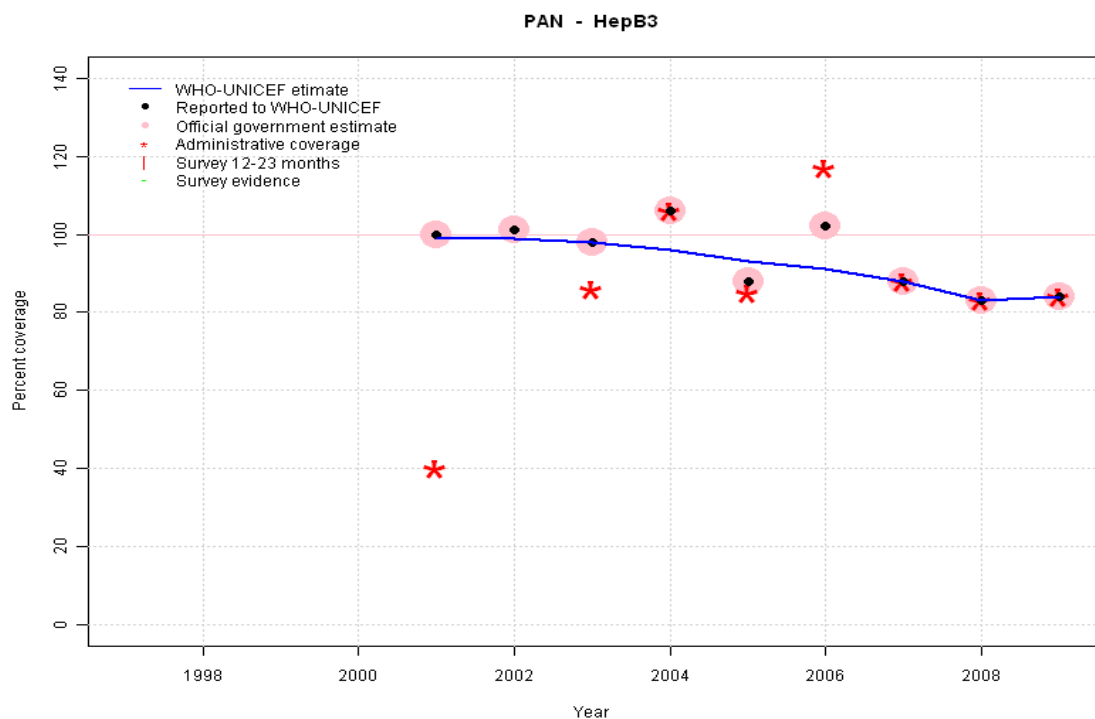


## Description:

- 1997: Legacy estimate.
- 1998: Estimate based on reported data.
- 1999: Estimate based on reported data.
- 2000: Estimate based on reported data.
- 2001: Estimate based on reported data.
- 2002: Estimate based on reported data.
- 2003: Estimate based on reported data.
- 2004: Estimate based on trend in reported data. Missing or ignored reported value estimated by interpolation between reported values of 83 percent in 2003 and 99 percent in 2005. 2004 reported data (106 percent) ignored; greater than 100 percent.
- 2005: Estimate based on reported data. Denominator based on number of children receiving BCG, Reported data for 2005 includes vaccinations delivered during measles campaigns.
- 2006: Estimate based on reported data.
- 2007: Estimate based on reported data. Denominator based on number of children receiving BCG
- 2008: Estimate based on reported data. Denominator based on number of children receiving BCG
- 2009: Estimate based on reported data.

	1997	1998	1999	2000	2001	2002	2003	2004	2005	2006	2007	2008	2009
Estimate	92	96	92	97	95	79	83	91	99	94	89	85	85
Reported	92	96	92	97	95	79	83	106	99	94	89	85	85
Official	NA	NA	92	97	95	NA	NA	106	99	94	89	85	85
Administrative	NA	NA	92	97	92	NA	83	106	99	94	89	85	85
Survey	NA	NA	NA	NA	NA	NA	NA	NA	NA	NA	NA	NA	NA

# Panama - HepB3

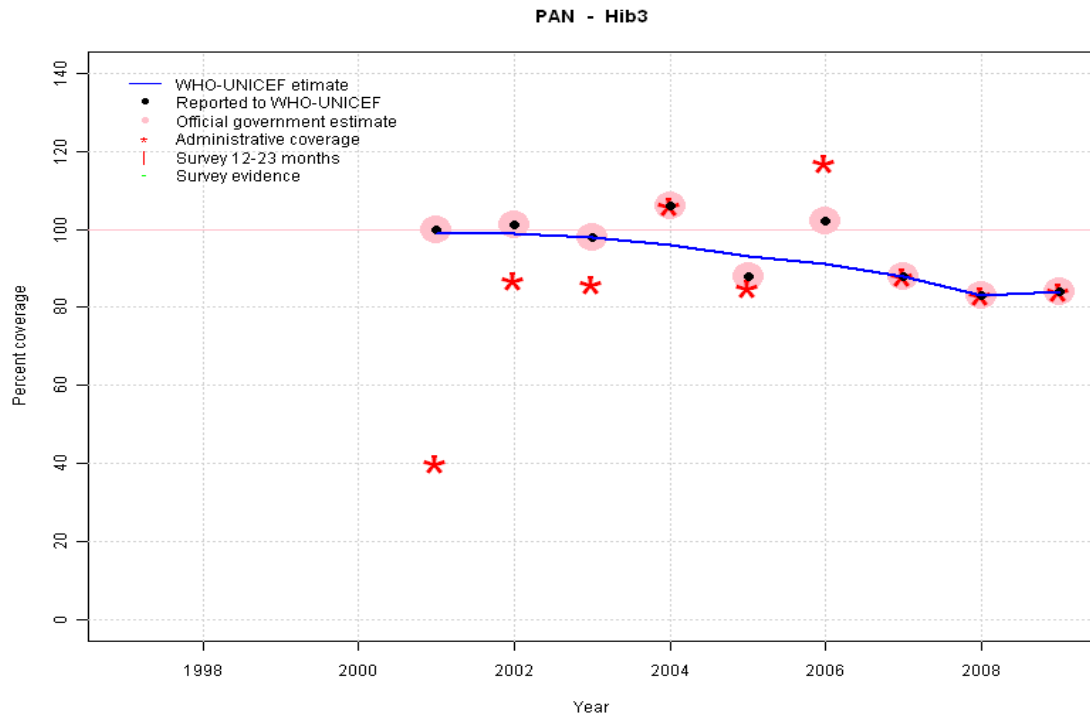


	1997	1998	1999	2000	2001	2002	2003	2004	2005	2006	2007	2008	2009
Estimate	NA	NA	NA	NA	99	99	98	96	93	91	88	83	84
Reported	NA	NA	NA	NA	100	101	98	106	88	102	88	83	84
Official	NA	NA	NA	NA	100	101	98	106	88	102	88	83	84
Administrative	NA	NA	NA	NA	40	NA	86	106	85	117	88	83	84
Survey	NA	NA	NA	NA	NA	NA	NA	NA	NA	NA	NA	NA	NA

## Description:

- 2001: Estimate based on reported data. HepB introduced in 1999. Reporting started in 2001.
- 2002: Estimate based on reported data. Missing or ignored reported value estimated by interpolation between reported values of 100 percent in 2001 and 98 percent in 2003. 2002 reported data (101 percent) ignored; greater than 100 percent.
- 2003: Estimate based on reported data.
- 2004: Estimate based on reported data. Missing or ignored reported value estimated by interpolation between reported values of 98 percent in 2003 and 88 percent in 2007. 2004 reported data (106 percent) ignored; greater than 100 percent.
- 2005: Estimate based on reported data. Missing or ignored reported value estimated by interpolation between reported values of 98 percent in 2003 and 88 percent in 2007. 2005 reported data (88 percent) inconsistent with data from other years. Denominator based on number of children receiving BCG
- 2006: Estimate based on reported data. Missing or ignored reported value estimated by interpolation between reported values of 98 percent in 2003 and 88 percent in 2007. 2006 reported data (102 percent) ignored; greater than 100 percent. 2006 reported data (102 percent) inconsistent with data from other years.
- 2007: Estimate based on reported data. Denominator based on number of children receiving BCG
- 2008: Estimate based on reported data. Denominator based on number of children receiving BCG
- 2009: Estimate based on reported data.

# Panama - Hib3



	1997	1998	1999	2000	2001	2002	2003	2004	2005	2006	2007	2008	2009
Estimate	NA	NA	NA	NA	99	99	98	96	93	91	88	83	84
Reported	NA	NA	NA	NA	100	101	98	106	88	102	88	83	84
Official	NA	NA	NA	NA	100	101	98	106	88	102	88	83	84
Administrative	NA	NA	NA	NA	40	87	86	106	85	117	88	83	84
Survey	NA	NA	NA	NA	NA	NA	NA	NA	NA	NA	NA	NA	NA

## Description:

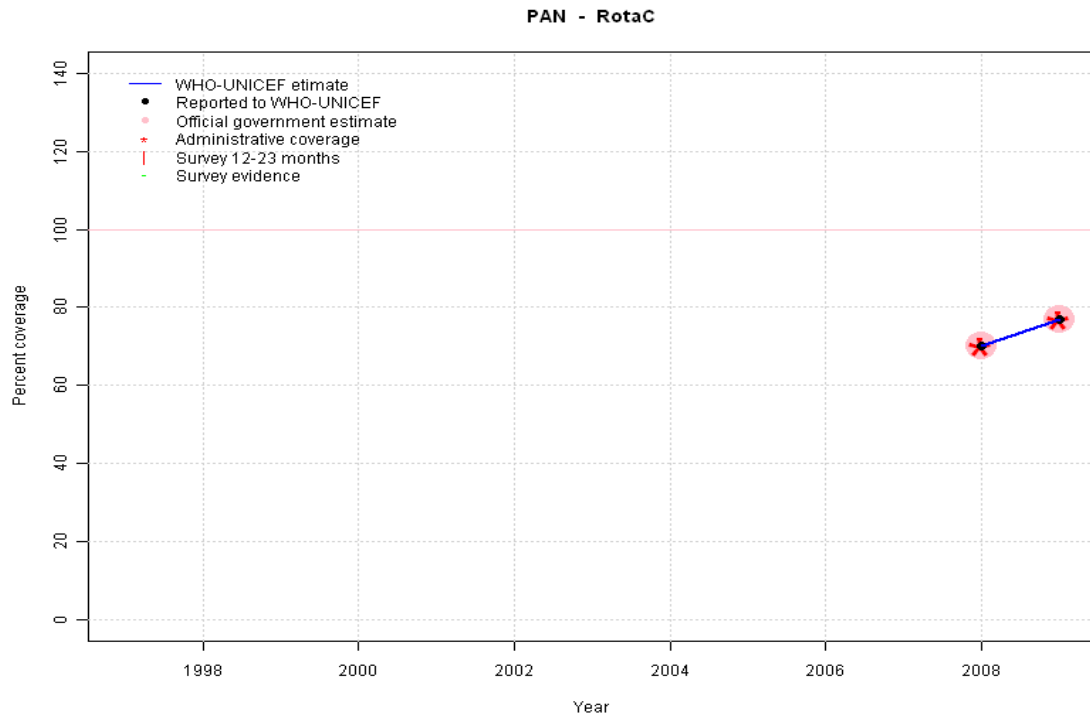
- 2001: Estimate based on reported data. Hib introduced in 2000. Reporting started in 2001.
- 2002: Estimate based on reported data. Missing or ignored reported value estimated by interpolation between reported values of 100 percent in 2001 and 98 percent in 2003. 2002 reported data (101 percent) ignored; greater than 100 percent.
- 2003: Estimate based on reported data.
- 2004: Estimate based on reported data. Missing or ignored reported value estimated by interpolation between reported values of 98 percent in 2003 and 88 percent in 2007. 2004 reported data (106 percent) ignored; greater than 100 percent.
- 2005: Estimate based on reported data. Missing or ignored reported value estimated by interpolation between reported values of 98 percent in 2003 and 88 percent in 2007. 2005 reported data (88 percent) inconsistent with data from other years. Denominator based on number of children receiving BCG
- 2006: Estimate based on reported data. Missing or ignored reported value estimated by interpolation between reported values of 98 percent in 2003 and 88 percent in 2007. 2006 reported data (102 percent) ignored; greater than 100 percent. 2006 reported data (102 percent) inconsistent with data from other years.
- 2007: Estimate based on reported data. Denominator based on number of children receiving BCG
- 2008: Estimate based on reported data. Denominator based on number of children receiving BCG
- 2009: Estimate based on reported data.

# Panama - RotaC

## Description:

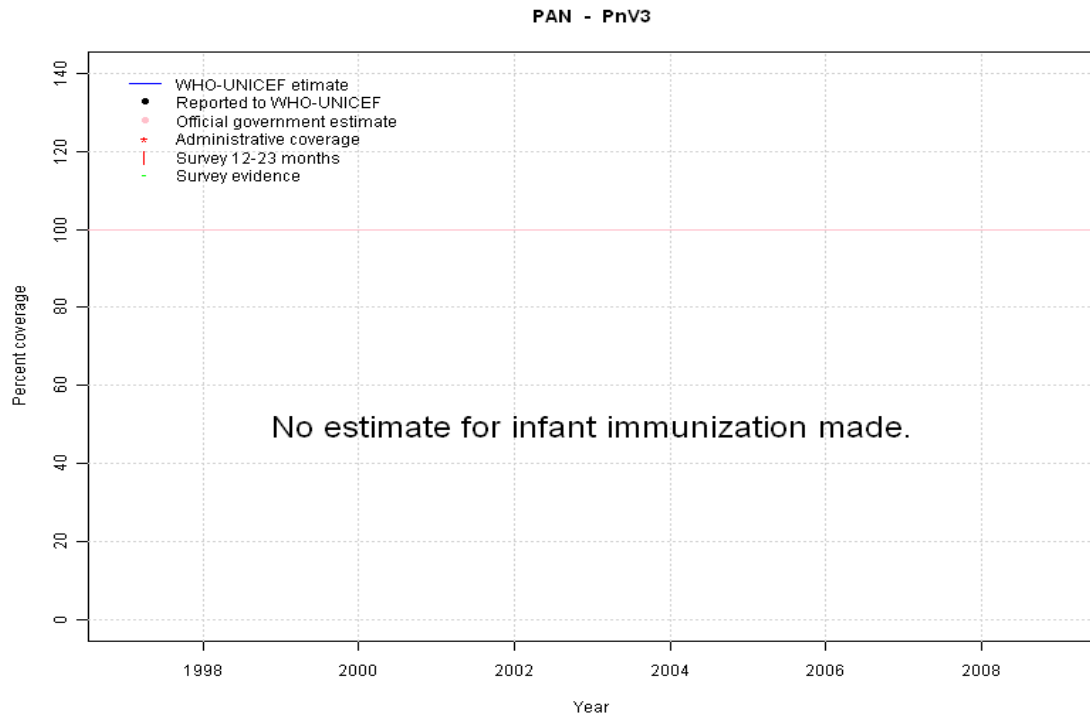
2008: Estimate based on reported data. Rota introduced in 2006 reporting started in 2008

2009: Estimate based on reported data.



	1997	1998	1999	2000	2001	2002	2003	2004	2005	2006	2007	2008	2009
Estimate	NA	NA	NA	NA	NA	NA	NA	NA	NA	NA	NA	70	77
Reported	NA	NA	NA	NA	NA	NA	NA	NA	NA	NA	NA	70	77
Official	NA	NA	NA	NA	NA	NA	NA	NA	NA	NA	NA	70	77
Administrative	NA	NA	NA	NA	NA	NA	NA	NA	NA	NA	NA	70	77
Survey	NA	NA	NA	NA	NA	NA	NA	NA	NA	NA	NA	NA	NA

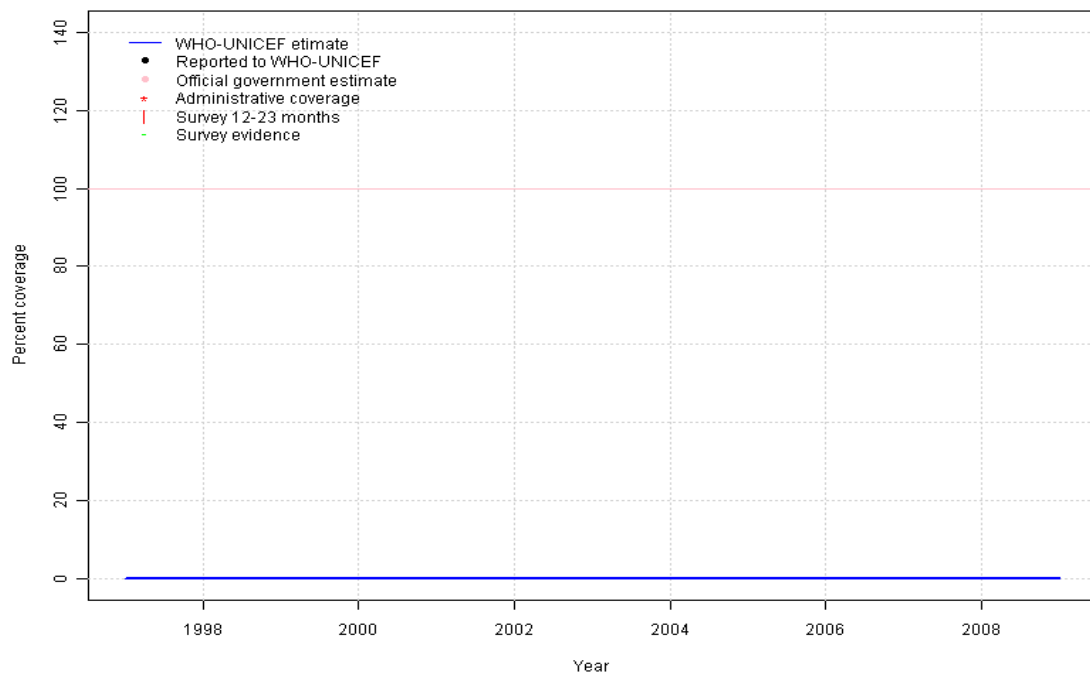
# Panama - PnV3



	1997	1998	1999	2000	2001	2002	2003	2004	2005	2006	2007	2008	2009
Estimate	NA	NA	NA	NA	NA	NA	NA	NA	NA	NA	NA	NA	NA
Reported	NA	NA	NA	NA	NA	NA	NA	NA	NA	NA	NA	NA	NA
Official	NA	NA	NA	NA	NA	NA	NA	NA	NA	NA	NA	NA	NA
Administrative	NA	NA	NA	NA	NA	NA	NA	NA	NA	NA	NA	NA	NA
Survey	NA	NA	NA	NA	NA	NA	NA	NA	NA	NA	NA	NA	NA

# Panama - YFV

PAN - YFV



	1997	1998	1999	2000	2001	2002	2003	2004	2005	2006	2007	2008	2009
Estimate	0	0	0	0	0	0	0	0	0	0	0	0	0
Reported	NA	NA	NA	NA	NA	NA	NA	NA	NA	NA	NA	NA	NA
Official	NA	NA	NA	NA	NA	NA	NA	NA	NA	NA	NA	NA	NA
Administrative	NA	NA	NA	NA	NA	NA	NA	NA	NA	NA	NA	NA	NA
Survey	NA	NA	NA	NA	NA	NA	NA	NA	NA	NA	NA	NA	NA

## Description:

- 1997: Estimate assigned by working group. YFV introduced in 1974 for areas at risk. Data available are not sufficient to produce an estimate.
- 1998: Estimate assigned by working group. YFV introduced in 1974 for areas at risk. Data available are not sufficient to produce an estimate.
- 1999: Estimate assigned by working group. YFV introduced in 1974 for areas at risk. Data available are not sufficient to produce an estimate.
- 2000: Estimate assigned by working group. YFV introduced in 1974 for areas at risk. Data available are not sufficient to produce an estimate.
- 2001: Estimate assigned by working group. YFV introduced in 1974 for areas at risk. Data available are not sufficient to produce an estimate.
- 2002: Estimate assigned by working group. YFV introduced in 1974 for areas at risk. Data available are not sufficient to produce an estimate.
- 2003: Estimate assigned by working group. YFV introduced in 1974 for areas at risk. Data available are not sufficient to produce an estimate.
- 2004: Estimate assigned by working group. YFV introduced in 1974 for areas at risk. Data available are not sufficient to produce an estimate.
- 2005: Estimate assigned by working group. YFV introduced in 1974 for areas at risk. Data available are not sufficient to produce an estimate.
- 2006: Estimate assigned by working group. YFV introduced in 1974 for areas at risk. Data available are not sufficient to produce an estimate.
- 2007: Estimate assigned by working group. YFV introduced in 1974 for areas at risk. Data available are not sufficient to produce an estimate.
- 2008: Estimate assigned by working group. YFV introduced in 1974 for areas at risk. Data available are not sufficient to produce an estimate.
- 2009: Estimate assigned by working group. YFV introduced in 1974 for areas at risk. Data available are not sufficient to produce an estimate.

Further information and estimates for 1980-1996 are available at:

[http://www.childinfo.org/immunization\\_countryreports.html](http://www.childinfo.org/immunization_countryreports.html)

[http://www.who.int/immunization\\_monitoring/routine/immunization\\_coverage/en/index4.html](http://www.who.int/immunization_monitoring/routine/immunization_coverage/en/index4.html)