



WHO / UNICEF

**Joint Monitoring Programme
for Water Supply and Sanitation**

Coverage Estimates

Improved Drinking Water

Updated in July 2008

**Occupied Palestinian
Territory**

Urban and Rural Water - Palestine

HS 2000				
WATER	Urban	Camp	Urban*	Rural
Indoor public system	91.9	89.4	91.4	63.3
Outdoor public system	2.0	7.0	3.0	0.9
Piped well	3.5	1.0	3.0	21.9
Unpiped well	0.9	0.6	0.8	5.3
Tanker truck	1.4	1.1	1.3	6.0
Spring/Canal	0.0	0.2	0.0	2.5
Other Source	0.3	0.7	0.4	0.1
TOTAL	100	100	100	100
Access to improved drinking water sources	97%	97%	97%	86%
% House connections			91%	63%

* The urban data is a combination of the categories "urban" + "camp" from the source

Source: Health Survey 2000, Palestine 2000

NS 2002		
WATER	Urban*	Rural
Indoor public system	83.7	64.0
Outdoor public system	1.3	1.0
Public tap	1.2	0.5
Piped well	5.3	24.9
Unpiped well	1.4	6.2
Spring/Canal	1.1	3.2
Tank	0.1	0.0
Other sources	5.9	0.2
TOTAL	100.0	100.0
Access to improved drinking water sources	92%	90%
% House connections	85%	65%

* The urban category does not hold camps.

Source: Nutrition Survey, 2002.

MICS 2005		
WATER	Urban*	Rural
Piped into dwelling	88.2	33.8
Piped into yard or plot	0.0	2.7
Public tap/standpipe	0.0	0.1
Tubewell/borehole	0.0	0.1
Protected well	0.0	8.4
Protected spring	0.0	0.1
Rainwater collection	0.0	0.1
Unprotected well	0.0	0.7
Tanker-truck	6.5	46.9
Cart with small tank/drum	5.3	6.5
Bottled water	0.0	0.1
Access to improved drinking water sources	88%	45%
% House connections	88%	36%

* The urban category does not hold camps.

* MICS survey held in Palestinian camps in Syria only
Source: Multiple Indicator Cluster Survey, 2005.

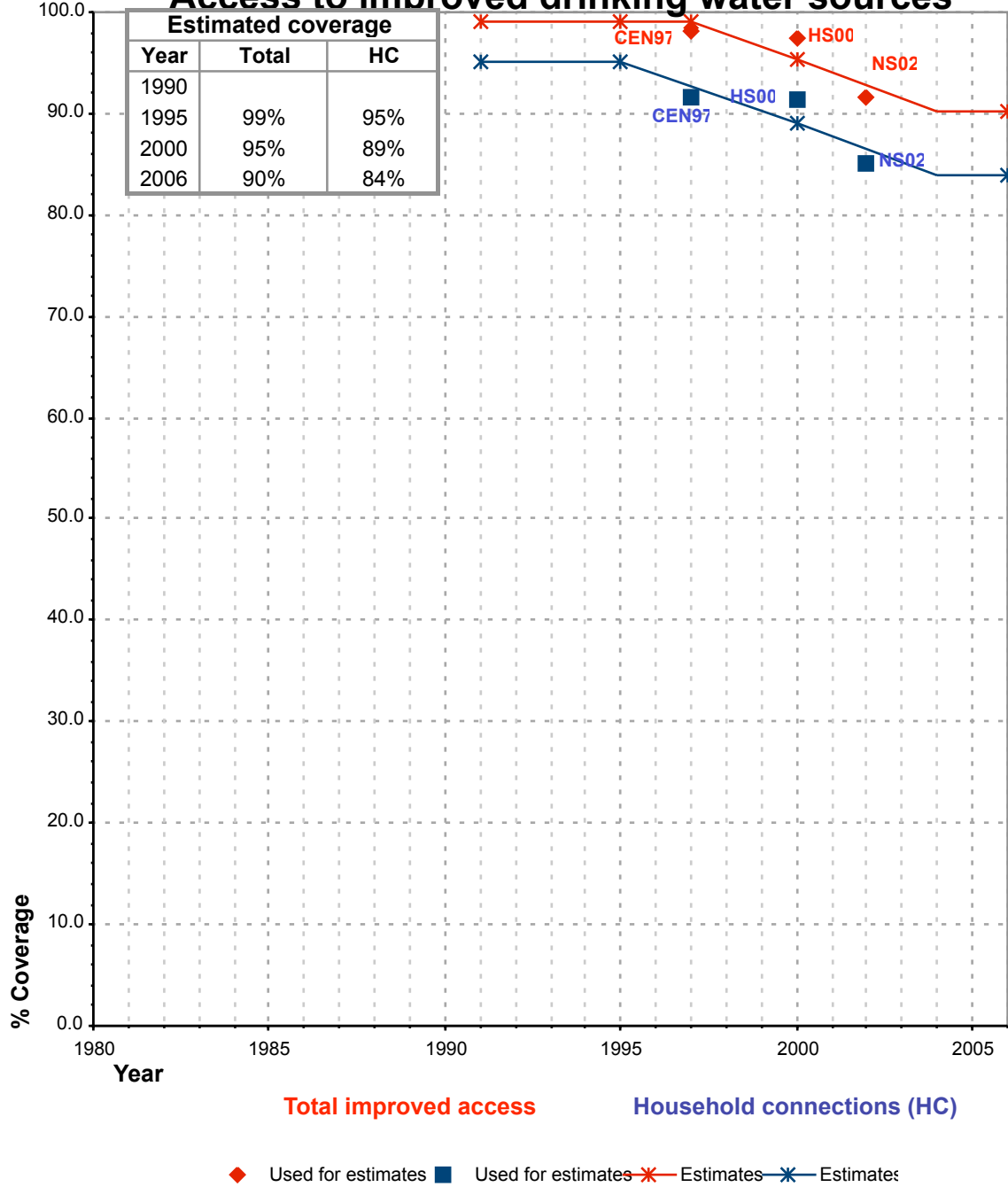
Census 1997		
WATER	Urban*	Rural
Public network	91.7	64.6
Private system	6.5	26.5
No piped water	1.7	8.8
Unknown	0.1	0.1
TOTAL	100.0	100.0
Access to improved drinking water sources	98%	91%
% House connections	92%	65%

* The urban category does not hold camps.

Source: Census 1997, IPUMS

Palestine			DRINKING WATER							
			URBAN				RURAL			
			HC		Total		HC		Total	
Source	Code	Year	Used for estimates	Not used for estimates	Used for estimates	Not used for estimates	Used for estimates	Not used for estimates	Used for estimates	Not used for estimates
Health Survey 2000, Palestinian Central Bureau of Statistics	HS00	2000	91.4		97.4		63.3		86.1	
Nutrition Survey, 2002.	NS02	2002	85.0		91.5		65.0		90.4	
Census 1997, IPUMS	CEN97	1997	91.7		98.2		64.6		91.1	
Multiple Indicator Cluster Survey, 2005	MICS05	2005		88.2		88.2		36.5		45.2

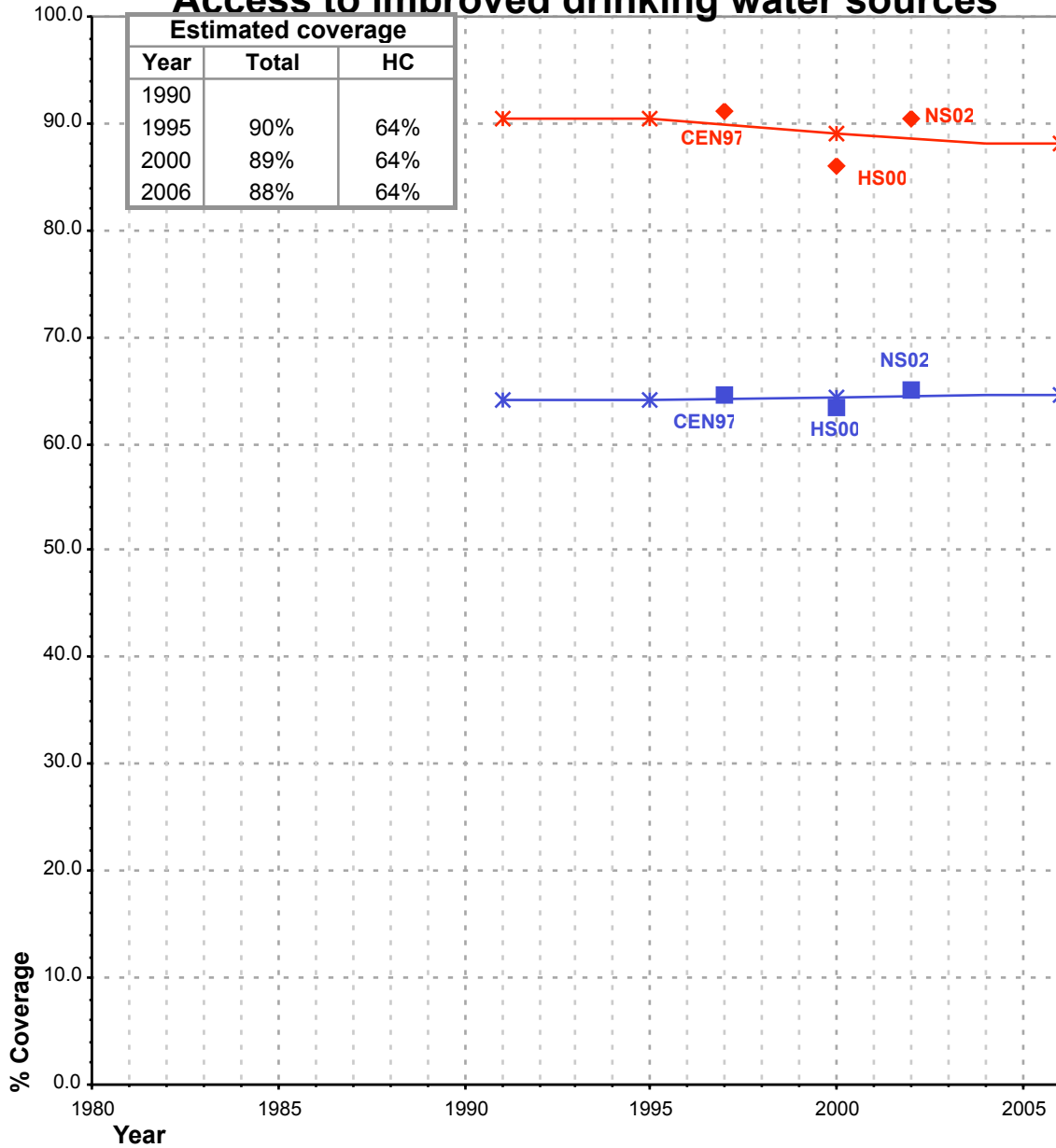
Palestine - urban - Access to improved drinking water sources



Total access : In HS00, the urban data is a combination of the categories "urban" + "camp" from the :
NS02, the urban category does not hold camps.
Household connections : In HS00, the urban data is a combination of the categori
source; in NS02, the urban category does not hold camps.

Palestine - rural -

Access to improved drinking water sources



Total improved access

Household connections (HC)

◆ Used for estimates ■ Used for estimates * Estimates * Estimates

Total access : In HS00, the urban data is a combination of the categories "urban" + "camp" from the :
 NS02, the urban category does not hold camps.
Household connections : In HS00, the urban data is a combination of the categori
 source; in NS02, the urban category does not hold camps.