



WHO / UNICEF

**Joint Monitoring Programme
for Water Supply and Sanitation**

Coverage Estimates
Improved Sanitation

Updated in July 2008

Philippines

Survey

DHS		1993	
(updated after query response received)			
Sanitation	Urban	Rural	Total
Own flush toilet	62.8	43.5	53.3
Shared flush toilet	13.0	6.9	10.0
Trad. Own pit latrine	8.7	12.0	10.3
Trad. Shared pit latrine	3.6	3.3	3.5
Open privy	3.8	10.0	6.8
Drop/overhang	2.0	3.9	2.9
No facilities	5.8	20.1	12.8
Other	0.2	0.0	0.1
Missing	0.2	0.2	0.2
TOTAL	100.1	99.9	99.9
Estimated sewerage connections based on MICS 96	4.5	1.0	
* 50% of trad. pit latrines considered improved	6.2	7.7	6.9
% Use of an improved sanitation facility	82%	58%	70%
% Sewerage connections	5%	1%	

MICS		1996	
(updated after query response received)			
Sanitation	Urban	Rural	Total
Flush to sewerage system	3'721	733	4'454
Flush to septic tank	16'587	10'809	27'397
Pour flush latrine	37'596	26'363	63'958
Covered dry latrine	2'190	9'895	12'085
Uncovered latrine	1'475	7'707	9'182
No facilities	6'362	19'962	26'323
TOTAL	67'931	75'469	143'399
Ratio of flush connected to sewerage/flush & poor flush	0.06	0.02	
% Use of an improved sanitation facility	88%	63%	75%
% Sewerage connections	5%	1%	

DHS		1998	
(updated after query response received)			
Sanitation	Urban	Rural	Total
Own flush toilet	71.1	48.1	59.5
Shared flush toilet	16.3	12.1	14.2
Closed pit latrine	4.9	9.6	7.3
open pit latrine	2.4	9.7	6.1
Drop/overhang	1.4	2.9	2.1
No facilities/field	3.6	17.0	10.3
Other	0.0	0.1	0.1
Missing	0.4	0.5	0.4
TOTAL	100.1	100.0	100.0
Estimated sewerage connections based on MICS 96	5.2	1.2	
% Use of an improved sanitation facility	92%	70%	81%
% Sewerage connections	5%	1%	

Urban and Rural Sanitation - Philippines

WHS		2003	
Proportion shared improved facilities/all improved facilities		0.14	0.12
SANITATION	Urban	Rural	
Private domestic connection to sewage system	6.8	2.0	
Shared domestic connection to sewage system	0.3	0.2	
Private flush to septic tank	20.8	14.1	
Shared flush to septic tank	3.2	1.6	
Private pour flush latrine	46.5	46.3	
Shared pour flush latrine	8.5	7.0	
Private covered dry latrine (with privacy)	4.1	8.4	
Shared covered dry latrine (with privacy)	0.8	1.2	
Uncovered dry latrine (without privacy)	1.6	4.3	
Bucket latrine (where fresh excreta are manually removed)	0.5	0.6	
No facilities (open defecation)	6.7	14.1	
Other	0.2	0.1	
TOTAL	100.0	100.0	
Ratio of flush to sewerage among private flush and pour flush	0.09	0.03	
% Use of an improved sanitation facility	91%	81%	
% Sewerage connections	7%	2%	

Source: World Health Survey, WHO, 2003.

DHS		2003	
SANITATION	Urban	Rural	
Flush toilet: own	76.7	53.6	
Flush toilet: shared	15.9	10.7	
Close pit	1.5	10.7	
Open pit	0.8	6.8	
Drop/overhang	1.1	2.8	
No toilet/field/bush	3.9	15.4	
Other	0.1	0.1	
TOTAL	100.0	100.1	
Estimated sewerage connections based on WHS 03	6.9	1.6	
% Use of an improved sanitation facility	94%	75%	
% Sewerage connections	7%	2%	

Source: Philippines Demographic and Health Survey 2003.

Census		1990	
SANITATION	Urban	Rural	
Septic tank- own use	51.6	19.3	
Other depository- own use	10.0	12.5	
Closed pit	5.8	13.2	
Septic tank- share	11.5	3.8	
Other depository- share	4.7	4.2	
Open pit	6.1	22.3	
Others	1.9	2.1	
None	8.3	22.5	
TOTAL	100.0	100.0	
% Use of an improved sanitation facility	84%	53%	
% Sewerage connections			

Source: Philippines census 1990 (10% micro dataset from IPUMS).

CENSUS

Estimate

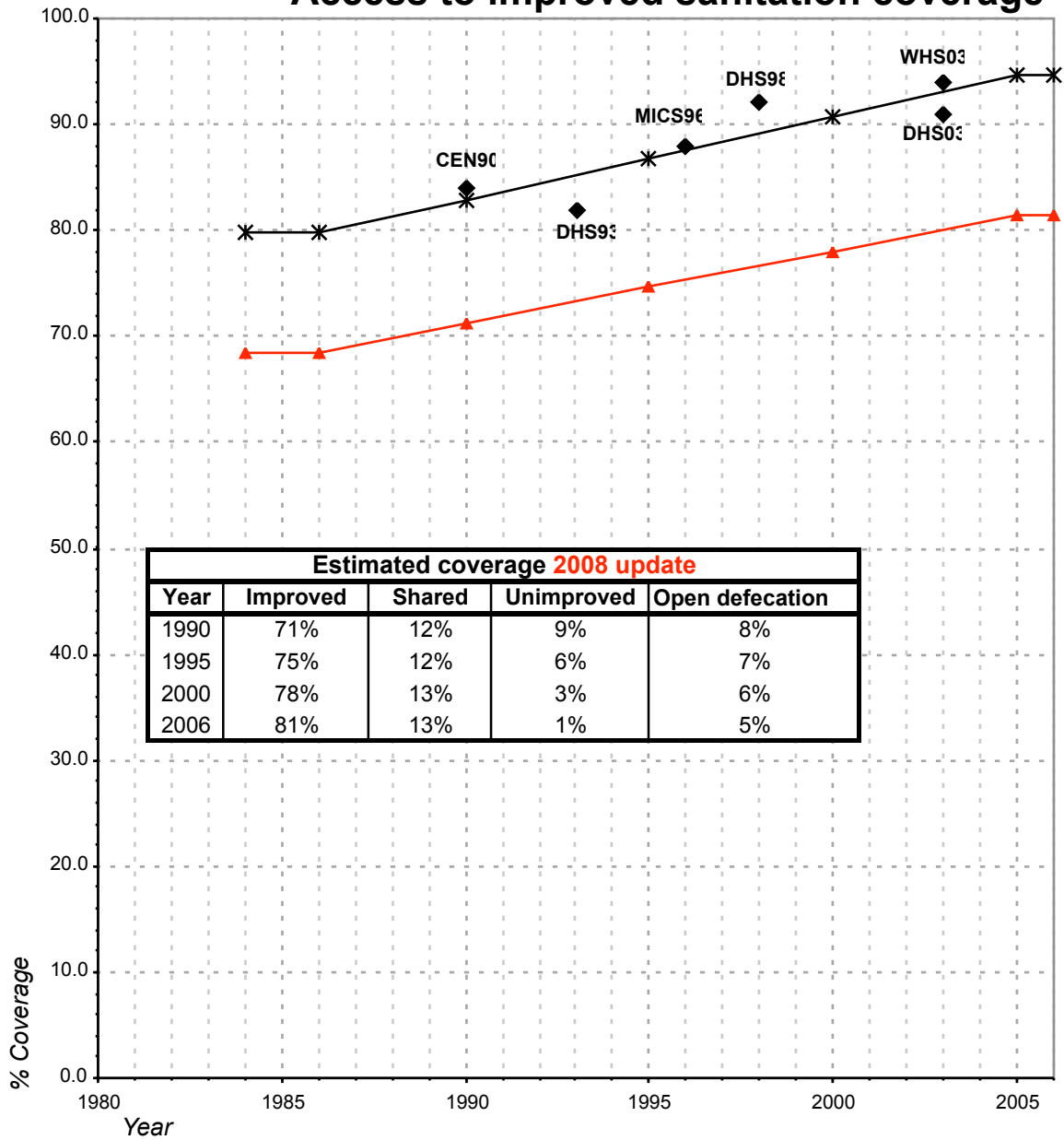
Census		2000	
No urban/rural breakdown			
SANITATION	Urban	Rural	

FORM-6/WHO		1999	
(updated after query response received)			
Sanitation	Urban	Rural	
Population served with household connections to conventional sewers	942	0	
Population without household connections but served with adequate, private or shared on-site system	28'594	28'618	
Total population served	29'536	28'618	
Total population unserved	2'464	12'382	
Total population	32'000	41'000	
access to improved sanitation	92%	70%	
% House connections	3%	0%	

Source: Philippines census 1990 (10% micro dataset from IPUMS).

Philippines			SANITATION								OPEN DEFECACTION			
			URBAN				RURAL							
			Source	Code	Year	HC		Total		HC		Total		Urban
Used for estimates	Not used for estimates	Used for estimates				Not used for estimates	Used for estimates	Not used for estimates	Used for estimates	Not used for estimates	Used for estimates	Not used for estimates	Used for estimates	Not used for estimates
The International Drinking Water Supply and Sanitation Decade. Review of National Baseline Data (as at December 1980). WHO 1984	WHO80	1980		1.0		81.0				67.0				
The International Drinking Water Supply and Sanitation Decade. Review of National Progress (as at December 1983). WHO 1986.	WHO83	1983		3.0		75.0				47.0				
The International Drinking Water Supply and Sanitation Decade. Review of Mid-Decade Progress (as at December 1985). WHO 1987.	WHO85	1985		4.0		83.0				56.0				
The International Drinking Water Supply and Sanitation Decade. Review of National Progress (as at December 1988). WHO 1990.	WHO88	1988		11.0		98.0				85.0				
The International Drinking Water Supply and Sanitation Decade. End of Decade Review (as at December 1990). WHO1992.	WHO90	1990		1.0		79.0				63.0				
Water Supply and Sanitation Sector Monitoring Report 1993 (Sector Status as of 31 December 1991)	JMP93	1991				78.0				62.0				
Water Supply and Sanitation Sector Monitoring Report - 1996. Sector Status as of 31 December 1994. WHO/UNICEF 1996.	JMP96	1992				87.0				67.0				
Demographic and Health Survey, 1993	DHS93	1993	5.0		82.0		1.0		58.0		5.8		20.1	
Multi-indicator Cluster Survey, 1996	MICS96	1996	5.0		88.0		1.0		63.0		9.4		26.5	
Demographic and Health Survey, 1998	DHS98	1998	5.0		92.0		1.0		70.0		3.6		17.0	
Global Water Supply and Sanitation Assessment 2000. Water Supply and Sanitation Sector Q	JMP99	1999		2.9		92.0		0.0		70.0				
World Health Survey, WHO, 2003.	WHS03	2003	7.0		91.0		2.0		81.0		6.7		14.1	
Philippines Demographic and Health Survey 2003.	DHS03	2003	7.0		94.0		2.0		75.0		3.9		15.4	
CENSUS 1990 from IPUMS	CEN90	1990			84.0				53.0		8.3		22.5	

Philippines - urban - Access to improved sanitation coverage



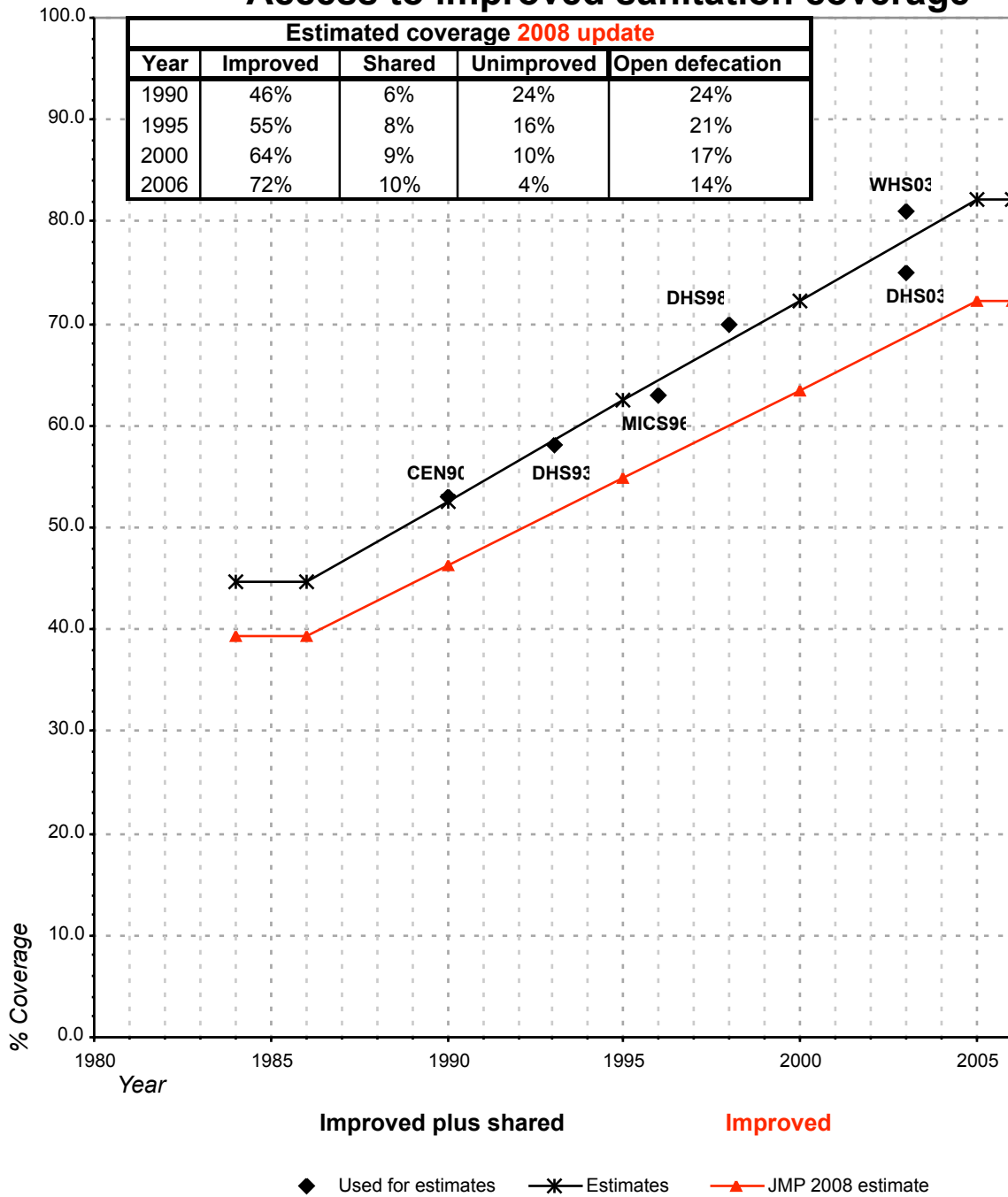
Improved plus shared

Improved

◆ Used for estimates *— Estimates ▲ JMP 2008 estimate

Shared facilities :
The proportion of the population using a shared improved sanitation facility is based on the WHS03

Philippines - rural - Access to improved sanitation coverage



Shared facilities :

The proportion of the population using a shared improved sanitation facility is based on the WHS03