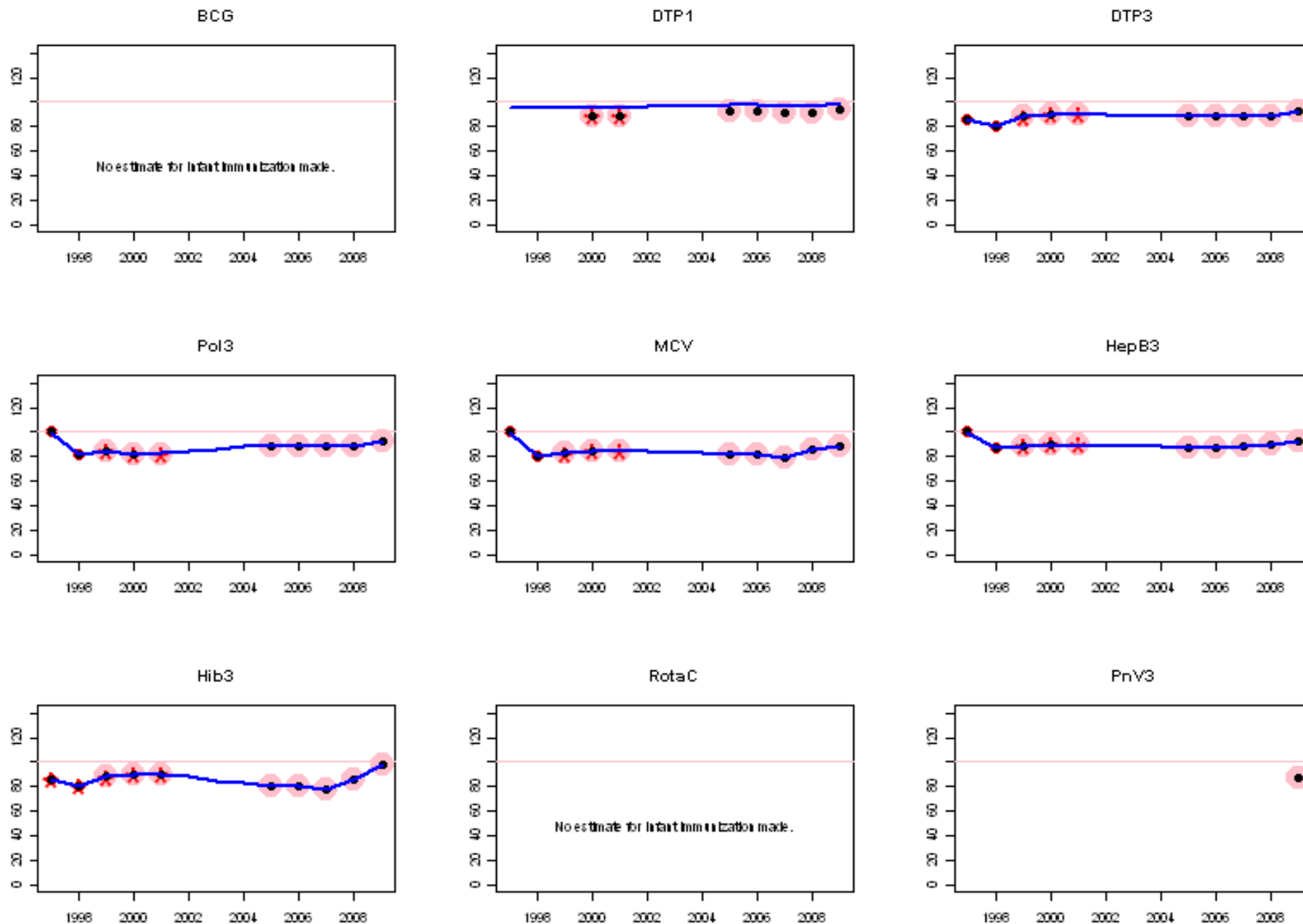
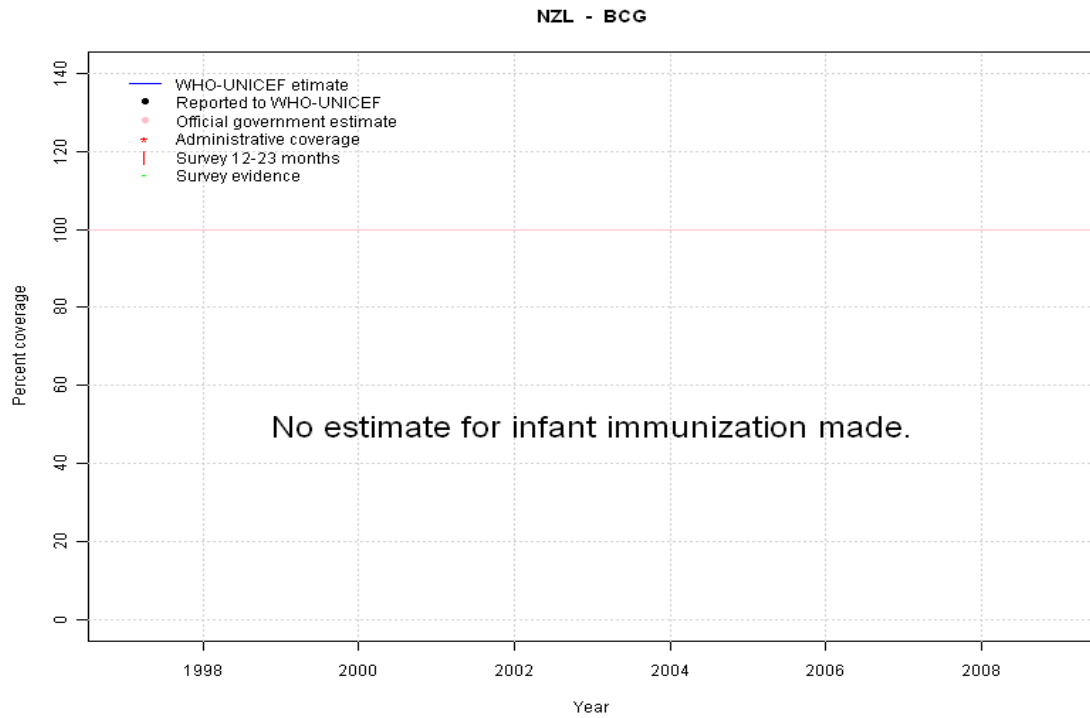


New Zealand: WHO and UNICEF estimates of immunization coverage, 1997 - 2009

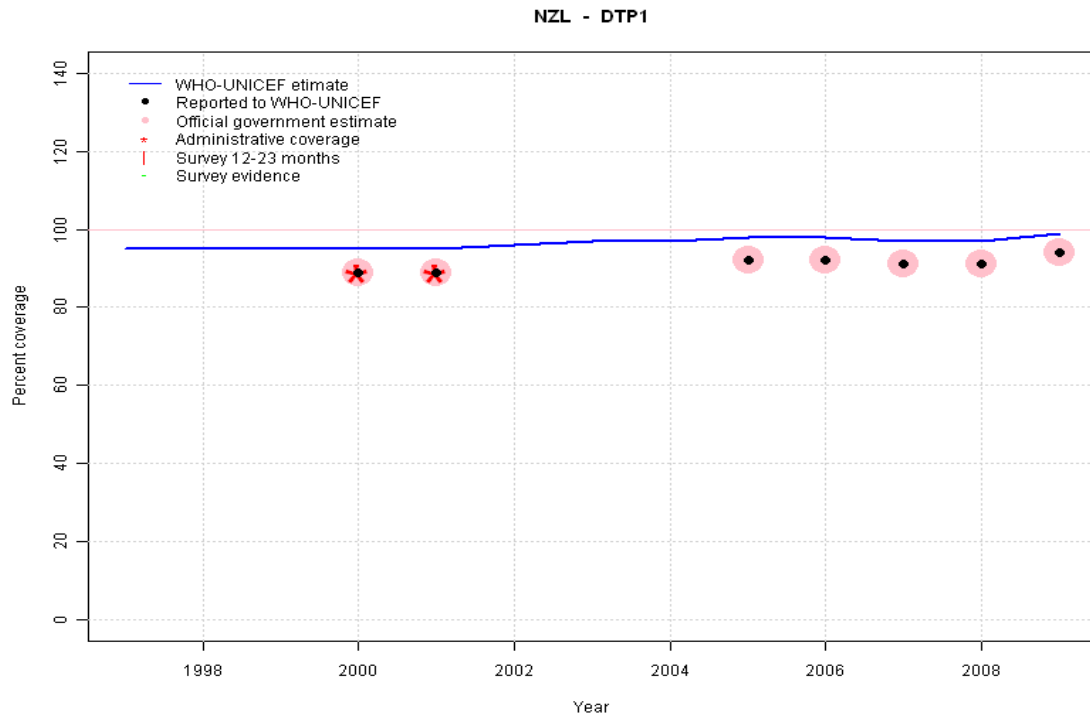


New Zealand - BCG



	1997	1998	1999	2000	2001	2002	2003	2004	2005	2006	2007	2008	2009
Estimate	NA	NA	NA	NA	NA	NA	NA	NA	NA	NA	NA	NA	NA
Reported	NA	NA	NA	NA	NA	NA	NA	NA	NA	NA	NA	NA	NA
Official	NA	NA	NA	NA	NA	NA	NA	NA	NA	NA	NA	NA	NA
Administrative	NA	NA	NA	NA	NA	NA	NA	NA	NA	NA	NA	NA	NA
Survey	NA	NA	NA	NA	NA	NA	NA	NA	NA	NA	NA	NA	NA

New Zealand - DTP1



	1997	1998	1999	2000	2001	2002	2003	2004	2005	2006	2007	2008	2009
Estimate	95	95	95	95	95	96	97	97	98	98	97	97	99
Reported	NA	NA	NA	89	89	NA	NA	NA	92	92	91	91	94
Official	NA	NA	NA	89	89	NA	NA	NA	92	92	91	91	94
Administrative	NA	NA	NA	89	89	NA	NA	NA	NA	NA	NA	NA	NA
Survey	NA	NA	NA	NA	NA	NA	NA	NA	NA	NA	NA	NA	NA

Description:

1997: Legacy estimate.

1998: Estimate calibrated to 1997 level (95 percent) and reported coverage (89 percent).

1999: Estimate calibrated to 1997 level (95 percent) and reported coverage (89 percent).

2000: Estimate calibrated to 1997 level (95 percent) and reported coverage (89 percent).

2001: Estimate calibrated to 1997 level (95 percent) and reported coverage (89 percent).

2002: Estimate calibrated to 1997 level (95 percent) and reported coverage (90 percent).

2003: Estimate calibrated to 1997 level (95 percent) and reported coverage (91 percent).

2004: Estimate calibrated to 1997 level (95 percent) and reported coverage (91 percent).

2005: Estimate calibrated to 1997 level (95 percent) and reported coverage (92 percent).

2006: Estimate calibrated to 1997 level (95 percent) and reported coverage (92 percent).

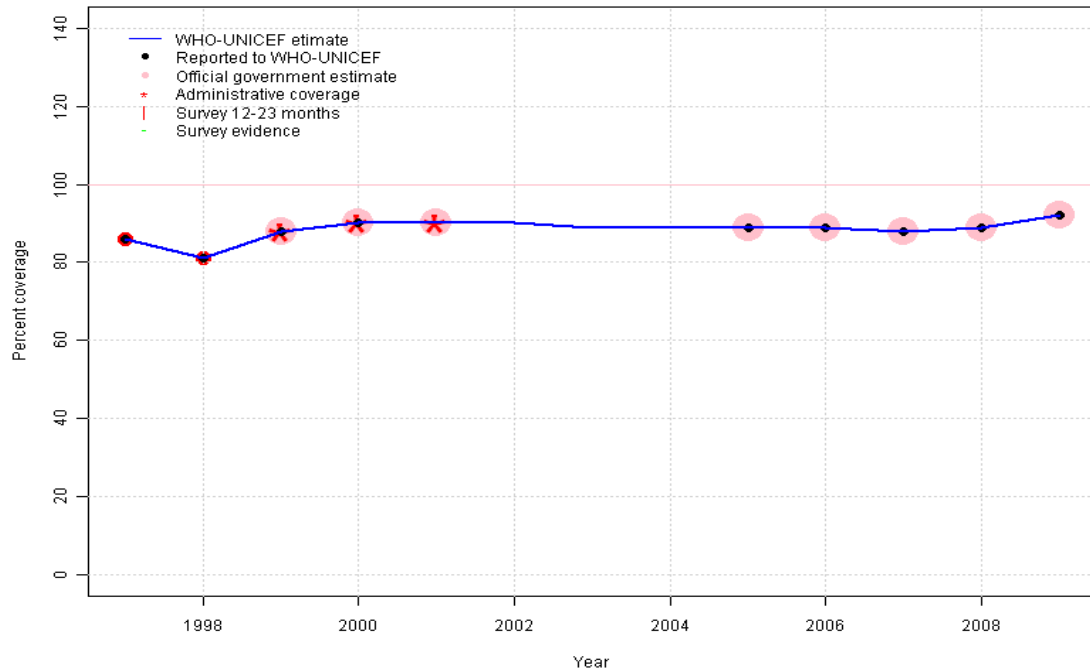
2007: Estimate calibrated to 1997 level (95 percent) and reported coverage (91 percent).

2008: Estimate calibrated to 1997 level (95 percent) and reported coverage (91 percent).

2009: Estimate calibrated to 1997 level (95 percent) and reported coverage (94 percent).

New Zealand - DTP3

NZL - DTP3



Description:

1997: Legacy estimate.

1998: Estimate based on reported data.

1999: Estimate based on reported data.

2000: Estimate based on reported data.

2001: Estimate based on trend in reported data. Missing or ignored reported value estimated by interpolation between reported values of 90 percent in 2000 and 89 percent in 2005.

2002: Estimate based on trend in reported data. Missing or ignored reported value estimated by interpolation between reported values of 90 percent in 2000 and 89 percent in 2005.

2003: Estimate based on trend in reported data. Missing or ignored reported value estimated by interpolation between reported values of 90 percent in 2000 and 89 percent in 2005.

2004: Estimate based on trend in reported data. Missing or ignored reported value estimated by interpolation between reported values of 90 percent in 2000 and 89 percent in 2005.

2005: Estimate based on reported data.

2006: Estimate based on reported data.

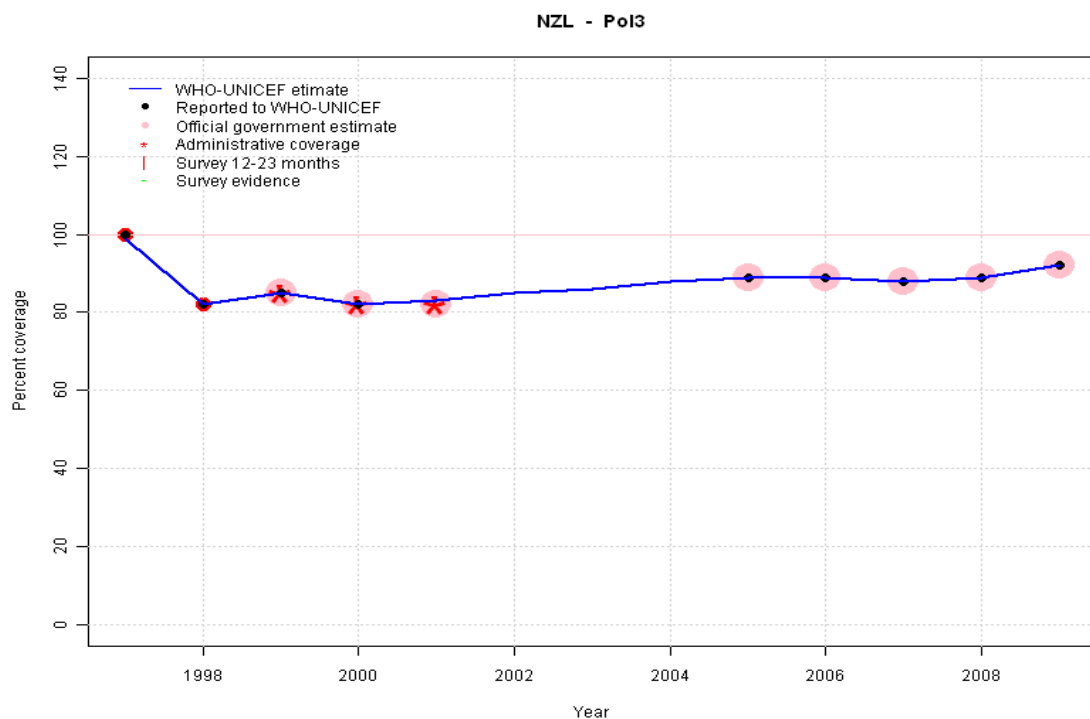
2007: Estimate based on reported data.

2008: Estimate based on reported data.

2009: Estimate based on reported data.

	1997	1998	1999	2000	2001	2002	2003	2004	2005	2006	2007	2008	2009
Estimate	86	81	88	90	90	90	89	89	89	89	88	89	92
Reported	86	81	88	90	NA	NA	NA	NA	89	89	88	89	92
Official	NA	NA	88	90	90	NA	NA	NA	89	89	88	89	92
Administrative	NA	NA	88	90	90	NA	NA	NA	NA	NA	NA	NA	NA
Survey	NA	NA	NA	NA	NA	NA	NA	NA	NA	NA	NA	NA	NA

New Zealand - Pol3



Description:

1997: Legacy estimate.

1998: Estimate based on reported data.

1999: Estimate based on reported data.

2000: Estimate based on reported data.

2001: Estimate based on trend in reported data. Missing or ignored reported value estimated by interpolation between reported values of 82 percent in 2000 and 89 percent in 2005.

2002: Estimate based on trend in reported data. Missing or ignored reported value estimated by interpolation between reported values of 82 percent in 2000 and 89 percent in 2005.

2003: Estimate based on trend in reported data. Missing or ignored reported value estimated by interpolation between reported values of 82 percent in 2000 and 89 percent in 2005.

2004: Estimate based on trend in reported data. Missing or ignored reported value estimated by interpolation between reported values of 82 percent in 2000 and 89 percent in 2005.

2005: Estimate based on reported data.

2006: Estimate based on reported data.

2007: Estimate based on reported data.

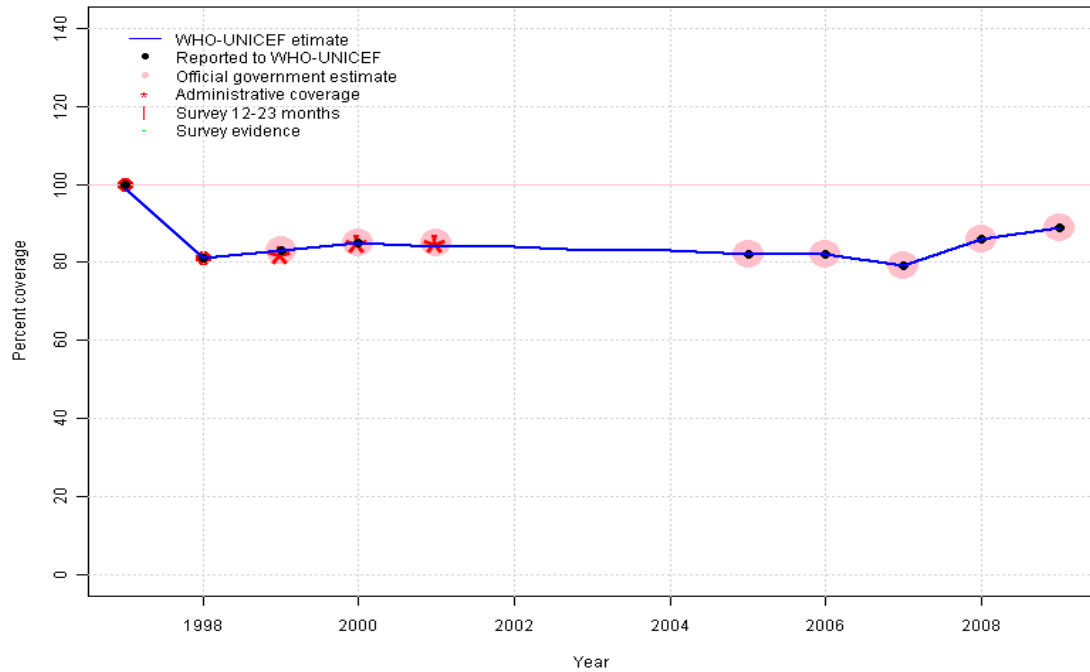
2008: Estimate based on reported data.

2009: Estimate based on reported data.

	1997	1998	1999	2000	2001	2002	2003	2004	2005	2006	2007	2008	2009
Estimate	99	82	85	82	83	85	86	88	89	89	88	89	92
Reported	100	82	85	82	NA	NA	NA	NA	89	89	88	89	92
Official	NA	NA	85	82	82	NA	NA	NA	89	89	88	89	92
Administrative	NA	NA	85	82	82	NA	NA	NA	NA	NA	NA	NA	NA
Survey	NA	NA	NA	NA	NA	NA	NA	NA	NA	NA	NA	NA	NA

New Zealand - MCV

NZL - MCV



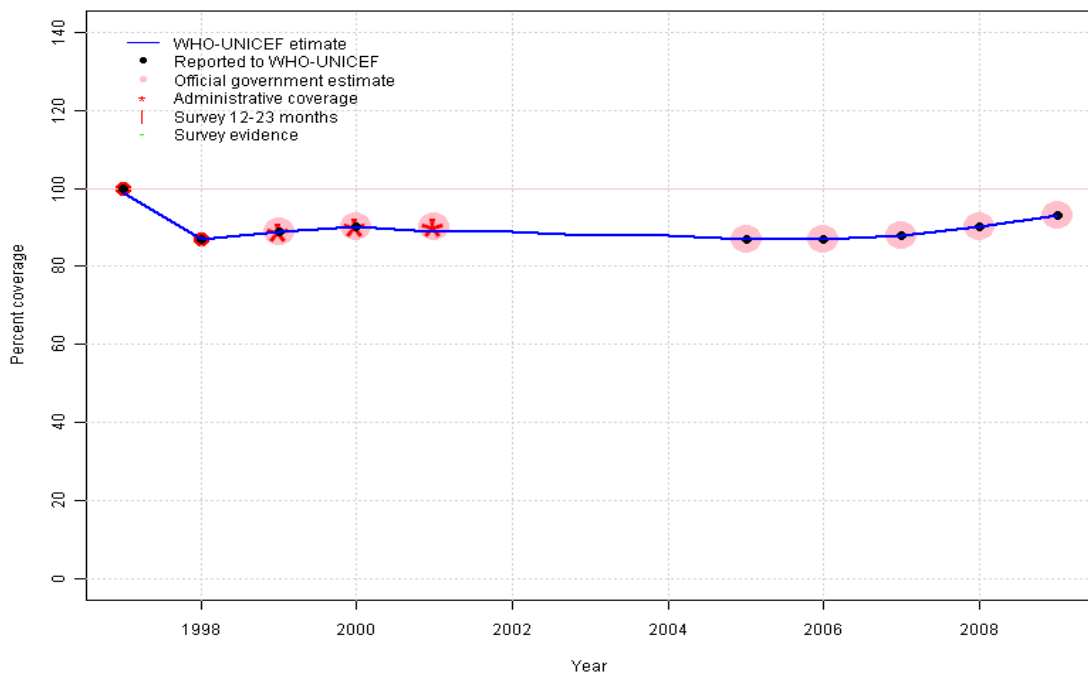
Description:

- 1997: Legacy estimate.
- 1998: Estimate based on reported data.
- 1999: Estimate based on reported data.
- 2000: Estimate based on reported data.
- 2001: Estimate based on trend in reported data. Missing or ignored reported value estimated by interpolation between reported values of 85 percent in 2000 and 82 percent in 2005.
- 2002: Estimate based on trend in reported data. Missing or ignored reported value estimated by interpolation between reported values of 85 percent in 2000 and 82 percent in 2005.
- 2003: Estimate based on trend in reported data. Missing or ignored reported value estimated by interpolation between reported values of 85 percent in 2000 and 82 percent in 2005.
- 2004: Estimate based on trend in reported data. Missing or ignored reported value estimated by interpolation between reported values of 85 percent in 2000 and 82 percent in 2005.
- 2005: Estimate based on reported data.
- 2006: Estimate based on reported data.
- 2007: Estimate based on reported data.
- 2008: Estimate based on reported data.
- 2009: Estimate based on reported data.

	1997	1998	1999	2000	2001	2002	2003	2004	2005	2006	2007	2008	2009
Estimate	99	81	83	85	84	84	83	83	82	82	79	86	89
Reported	100	81	83	85	NA	NA	NA	NA	82	82	79	86	89
Official	NA	NA	83	85	85	NA	NA	NA	82	82	79	86	89
Administrative	NA	NA	82	85	85	NA	NA	NA	NA	NA	NA	NA	NA
Survey	NA	NA	NA	NA	NA	NA	NA	NA	NA	NA	NA	NA	NA

New Zealand - HepB3

NZL - HepB3



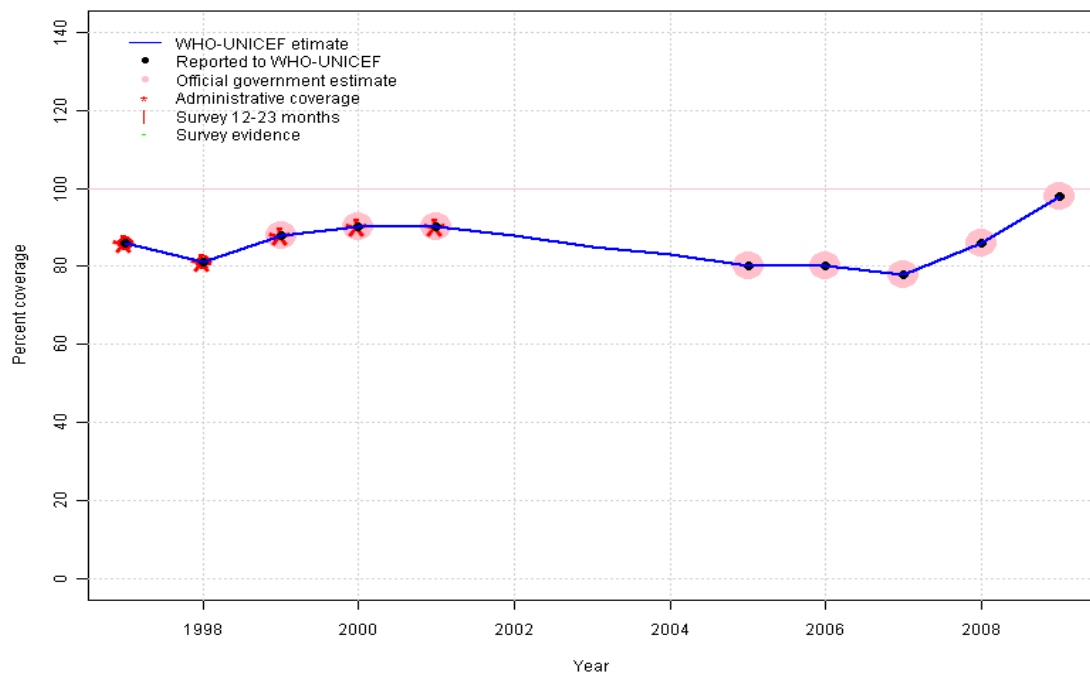
Description:

- 1997: Legacy estimate.
- 1998: Estimate based on reported data.
- 1999: Estimate based on reported data.
- 2000: Estimate based on reported data.
- 2001: Estimate based on trend in reported data. Missing or ignored reported value estimated by interpolation between reported values of 90 percent in 2000 and 87 percent in 2005.
- 2002: Estimate based on trend in reported data. Missing or ignored reported value estimated by interpolation between reported values of 90 percent in 2000 and 87 percent in 2005.
- 2003: Estimate based on trend in reported data. Missing or ignored reported value estimated by interpolation between reported values of 90 percent in 2000 and 87 percent in 2005.
- 2004: Estimate based on trend in reported data. Missing or ignored reported value estimated by interpolation between reported values of 90 percent in 2000 and 87 percent in 2005.
- 2005: Estimate based on reported data.
- 2006: Estimate based on reported data.
- 2007: Estimate based on reported data.
- 2008: Estimate based on reported data.
- 2009: Estimate based on reported data.

	1997	1998	1999	2000	2001	2002	2003	2004	2005	2006	2007	2008	2009
Estimate	99	87	89	90	89	89	88	88	87	87	88	90	93
Reported	100	87	89	90	NA	NA	NA	NA	87	87	88	90	93
Official	NA	NA	89	90	90	NA	NA	NA	87	87	88	90	93
Administrative	NA	NA	89	90	90	NA	NA	NA	NA	NA	NA	NA	NA
Survey	NA	NA	NA	NA	NA	NA	NA	NA	NA	NA	NA	NA	NA

New Zealand - Hib3

NZL - Hib3



Description:

1997: Legacy estimate. Hib introduced in 1994. Reporting started in 1997.

1998: Estimate based on reported data.

1999: Estimate based on reported data.

2000: Estimate based on reported data.

2001: Estimate based on reported data.

2002: Estimate based on trend in reported data. Missing or ignored reported value estimated by interpolation between reported values of 90 percent in 2001 and 80 percent in 2005.

2003: Estimate based on trend in reported data. Missing or ignored reported value estimated by interpolation between reported values of 90 percent in 2001 and 80 percent in 2005.

2004: Estimate based on trend in reported data. Missing or ignored reported value estimated by interpolation between reported values of 90 percent in 2001 and 80 percent in 2005.

2005: Estimate based on reported data.

2006: Estimate based on reported data.

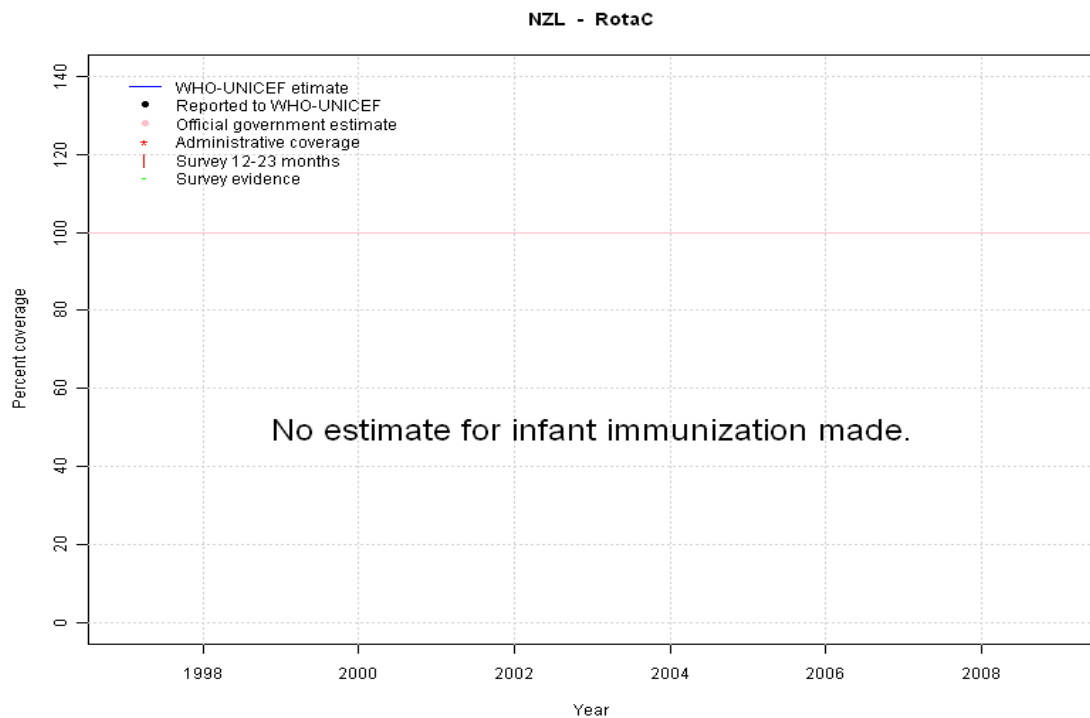
2007: Estimate based on reported data.

2008: Estimate based on reported data.

2009: Estimate based on reported data. Increase documented by National Immunization Register for children between 12 and 17 months of age.

	1997	1998	1999	2000	2001	2002	2003	2004	2005	2006	2007	2008	2009
Estimate	86	81	88	90	90	88	85	83	80	80	78	86	98
Reported	86	81	88	90	90	NA	NA	NA	80	80	78	86	98
Official	NA	NA	88	90	90	NA	NA	NA	80	80	78	86	98
Administrative	86	81	88	90	90	NA	NA	NA	NA	NA	NA	NA	NA
Survey	NA	NA	NA	NA	NA	NA	NA	NA	NA	NA	NA	NA	NA

New Zealand - RotaC

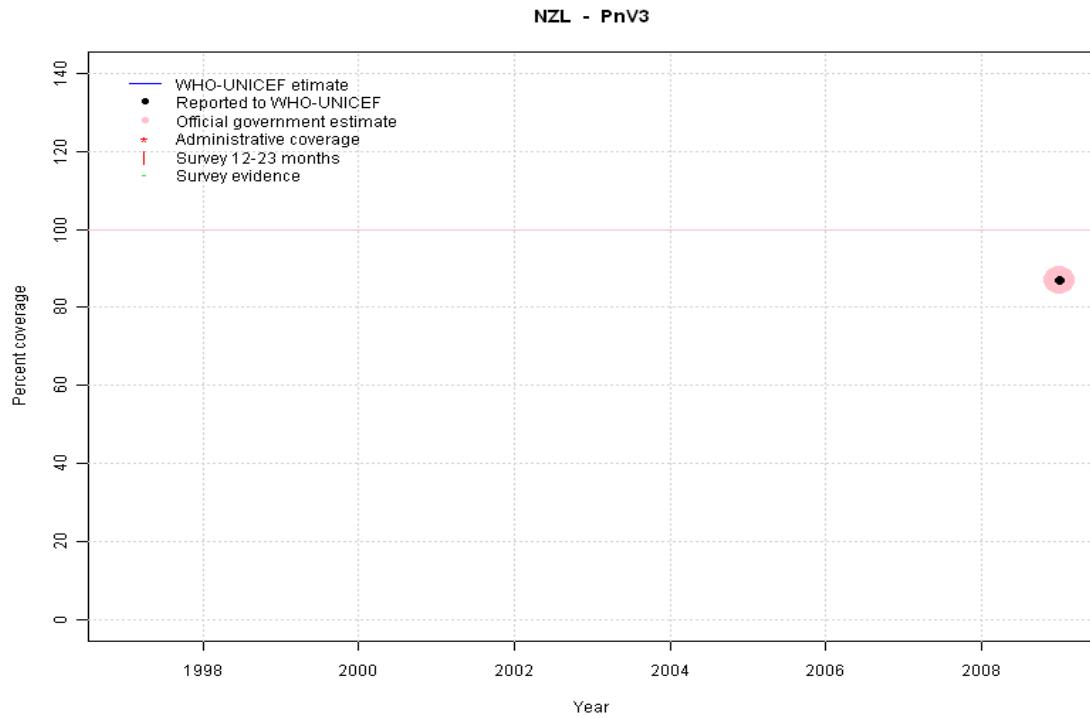


	1997	1998	1999	2000	2001	2002	2003	2004	2005	2006	2007	2008	2009
Estimate	NA	NA	NA	NA	NA	NA	NA	NA	NA	NA	NA	NA	NA
Reported	NA	NA	NA	NA	NA	NA	NA	NA	NA	NA	NA	NA	NA
Official	NA	NA	NA	NA	NA	NA	NA	NA	NA	NA	NA	NA	NA
Administrative	NA	NA	NA	NA	NA	NA	NA	NA	NA	NA	NA	NA	NA
Survey	NA	NA	NA	NA	NA	NA	NA	NA	NA	NA	NA	NA	NA

New Zealand - PnV3

Description:

2009: Estimate based on reported data. PCV introduced in 2008 reporting started in 2009



	1997	1998	1999	2000	2001	2002	2003	2004	2005	2006	2007	2008	2009
Estimate	NA	NA	NA	NA	NA	NA	NA	NA	NA	NA	NA	NA	87
Reported	NA	NA	NA	NA	NA	NA	NA	NA	NA	NA	NA	NA	87
Official	NA	NA	NA	NA	NA	NA	NA	NA	NA	NA	NA	NA	87
Administrative	NA	NA	NA	NA	NA	NA	NA	NA	NA	NA	NA	NA	NA
Survey	NA	NA	NA	NA	NA	NA	NA	NA	NA	NA	NA	NA	NA

Further information and estimates for 1980-1996 are available at:

http://www.childinfo.org/immunization_countryreports.html

http://www.who.int/immunization_monitoring/routine/immunization_coverage/en/index4.html