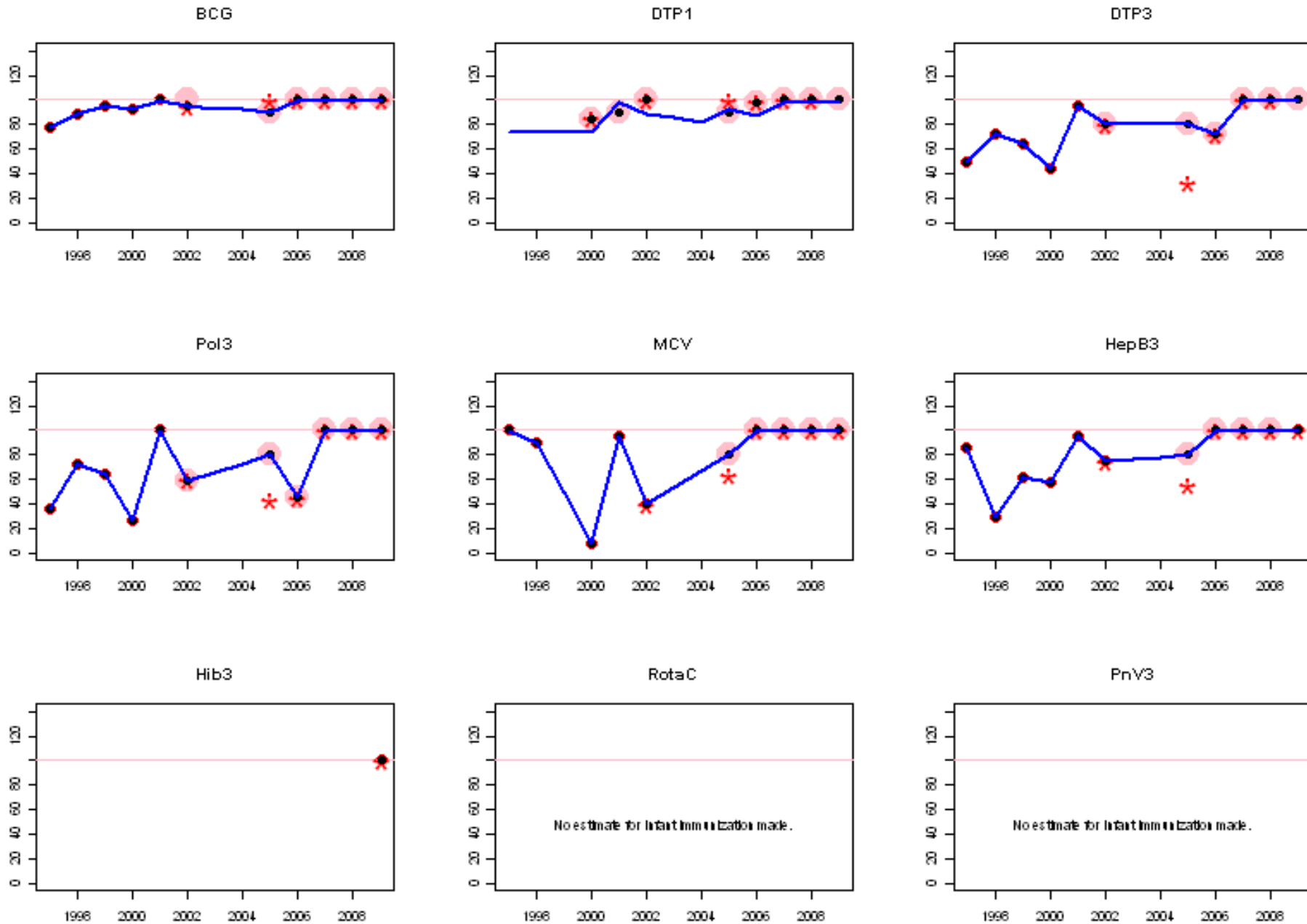
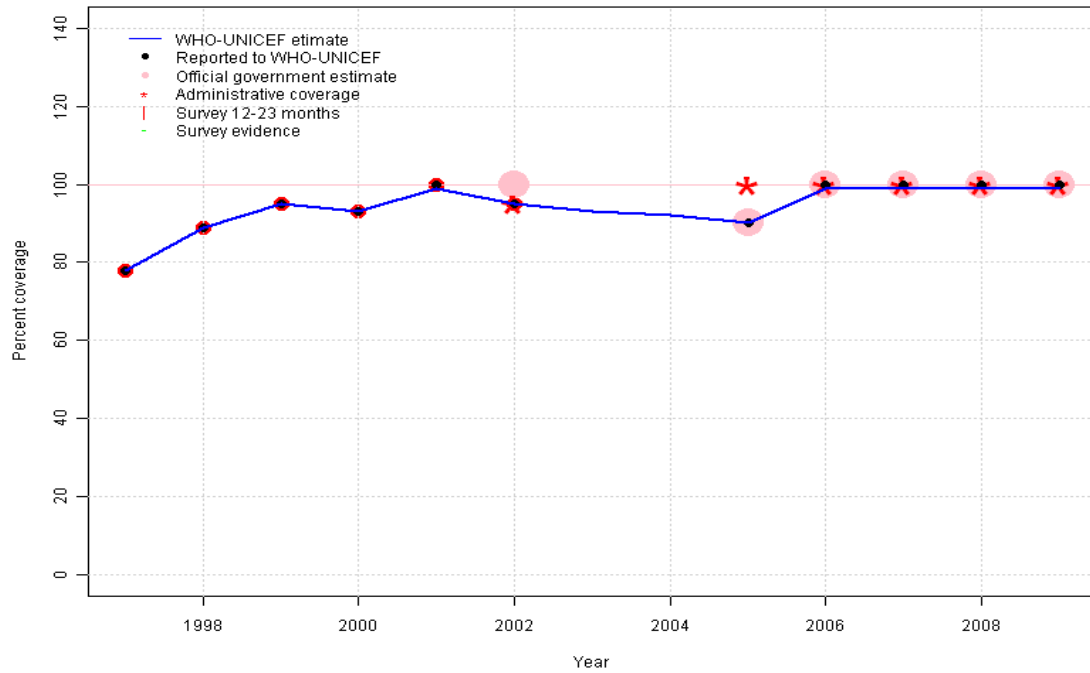


Nauru: WHO and UNICEF estimates of immunization coverage, 1997 - 2009



Nauru - BCG

NRU - BCG



Description:

1997: Legacy estimate.

1998: Estimate based on reported data.

1999: Estimate based on reported data.

2000: Estimate based on reported data.

2001: Estimate based on reported data.

2002: Estimate based on reported data.

2003: Estimate based on trend in reported data. Missing or ignored reported value estimated by interpolation between reported values of 95 percent in 2002 and 90 percent in 2005.

2004: Estimate based on trend in reported data. Missing or ignored reported value estimated by interpolation between reported values of 95 percent in 2002 and 90 percent in 2005.

2005: Estimate based on reported data.

2006: Estimate based on reported data.

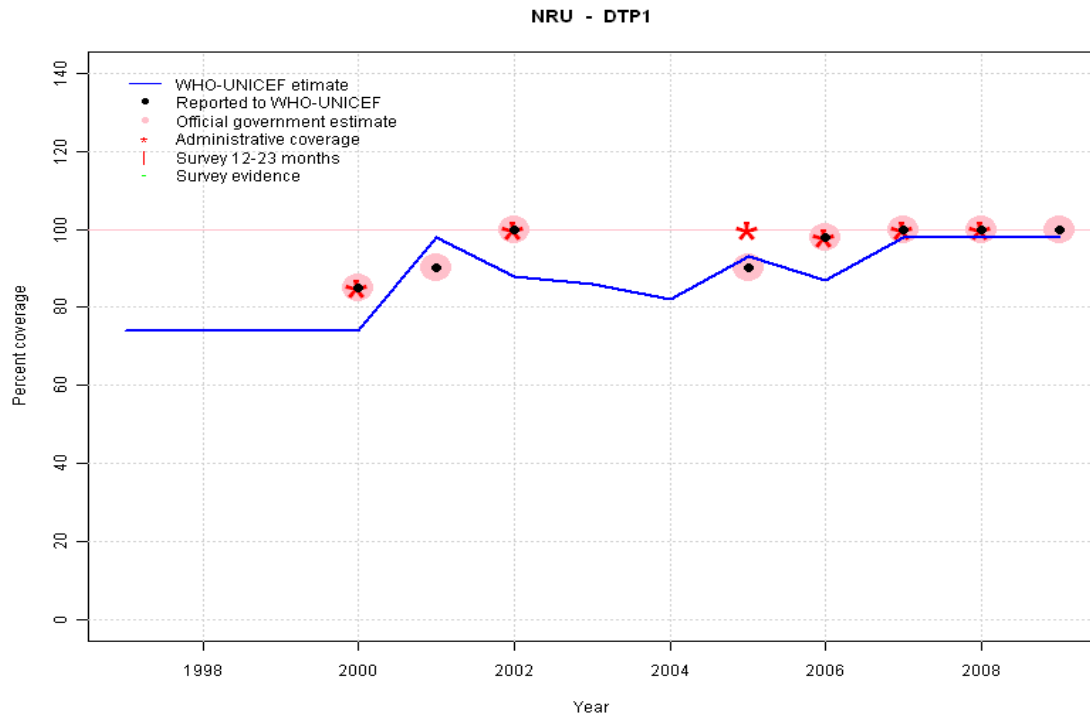
2007: Estimate based on reported data.

2008: Estimate based on reported data.

2009: Estimate based on reported data.

	1997	1998	1999	2000	2001	2002	2003	2004	2005	2006	2007	2008	2009
Estimate	78	89	95	93	99	95	93	92	90	99	99	99	99
Reported	78	89	95	93	100	95	NA	NA	90	100	100	100	100
Official	NA	NA	NA	NA	NA	100	NA	NA	90	100	100	100	100
Administrative	NA	NA	NA	NA	NA	95	NA	NA	100	100	100	100	100
Survey	NA	NA	NA	NA	NA	NA	NA	NA	NA	NA	NA	NA	NA

Nauru - DTP1



	1997	1998	1999	2000	2001	2002	2003	2004	2005	2006	2007	2008	2009
Estimate	74	74	74	74	98	88	86	82	93	87	98	98	98
Reported	NA	NA	NA	85	90	100	NA	NA	90	98	100	100	100
Official	NA	NA	NA	85	90	100	NA	NA	90	98	100	100	100
Administrative	NA	NA	NA	85	NA	100	NA	NA	100	98	100	100	NA
Survey	NA	NA	NA	NA	NA	NA	NA	NA	NA	NA	NA	NA	NA

Description:

1997: Legacy estimate.

1998: Estimate calibrated to 1997 level (74 percent) and reported coverage (85 percent).

1999: Estimate calibrated to 1997 level (74 percent) and reported coverage (85 percent).

2000: Estimate calibrated to 1997 level (74 percent) and reported coverage (85 percent).

2001: Estimated DTP3 greater than estimated DTP1; DTP1 estimate based on the relationship between DTP1 and DTP3 from 282 surveys.

2002: Estimate calibrated to 1997 level (74 percent) and reported coverage (99 percent).

2003: Estimate calibrated to 1997 level (74 percent) and reported coverage (97 percent).

2004: Estimate calibrated to 1997 level (74 percent) and reported coverage (93 percent).

2005: Estimated DTP3 greater than estimated DTP1; DTP1 estimate based on the relationship between DTP1 and DTP3 from 282 surveys.

2006: Estimate calibrated to 1997 level (74 percent) and reported coverage (98 percent).

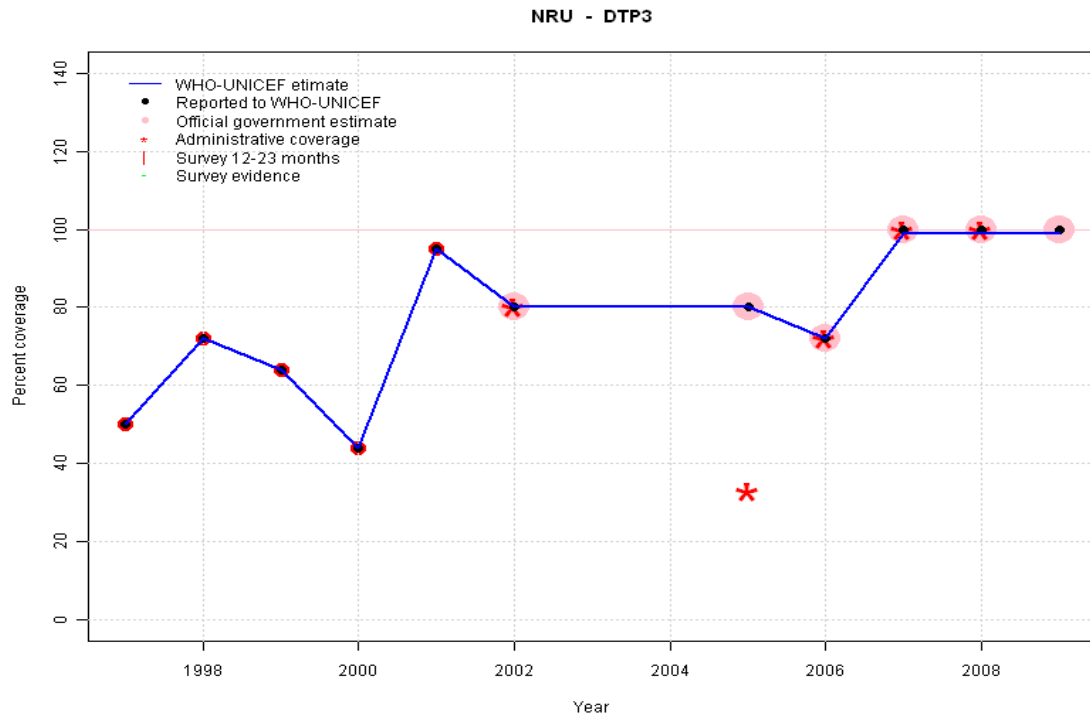
2007: Estimated DTP3 greater than estimated DTP1; DTP1 estimate based on the relationship between DTP1 and DTP3 from 282 surveys.

2008: Estimated DTP3 greater than estimated DTP1; DTP1 estimate based on the relationship between DTP1 and DTP3 from 282 surveys.

2009: Estimated DTP3 greater than estimated DTP1; DTP1 estimate based on the relationship between DTP1 and DTP3 from 282 surveys.

Nauru - DTP3

Description:



1997: Legacy estimate.

1998: Estimate based on reported data.

1999: Estimate based on reported data.

2000: Estimate based on reported data.

2001: Estimate based on reported data.

2002: Estimate based on reported data.

2003: Estimate based on trend in reported data. Missing or ignored reported value estimated by interpolation between reported values of 80 percent in 2002 and 80 percent in 2005.

2004: Estimate based on trend in reported data. Missing or ignored reported value estimated by interpolation between reported values of 80 percent in 2002 and 80 percent in 2005.

2005: Estimate based on reported data.

2006: Estimate based on reported data.

2007: Estimate based on reported data.

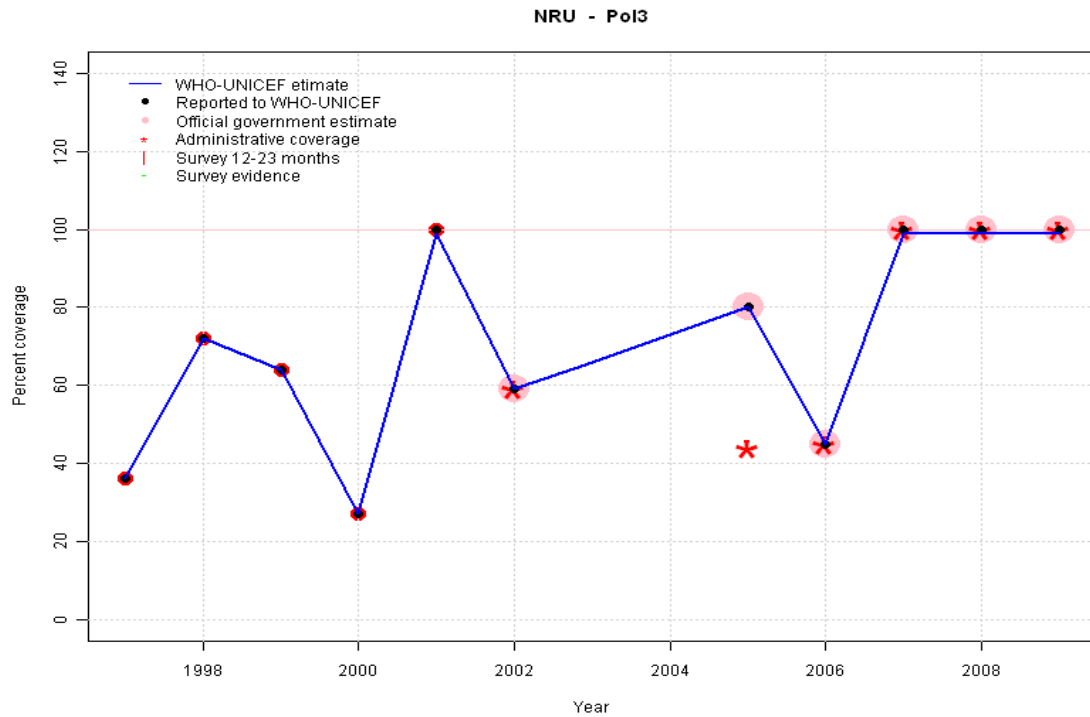
2008: Estimate based on reported data.

2009: Estimate based on reported data.

	1997	1998	1999	2000	2001	2002	2003	2004	2005	2006	2007	2008	2009
Estimate	50	72	64	44	95	80	80	80	80	72	99	99	99
Reported	50	72	64	44	95	80	NA	NA	80	72	100	100	100
Official	NA	NA	NA	NA	NA	80	NA	NA	80	72	100	100	100
Administrative	NA	NA	NA	NA	NA	80	NA	NA	33	72	100	100	NA
Survey	NA	NA	NA	NA	NA	NA	NA	NA	NA	NA	NA	NA	NA

Nauru - Pol3

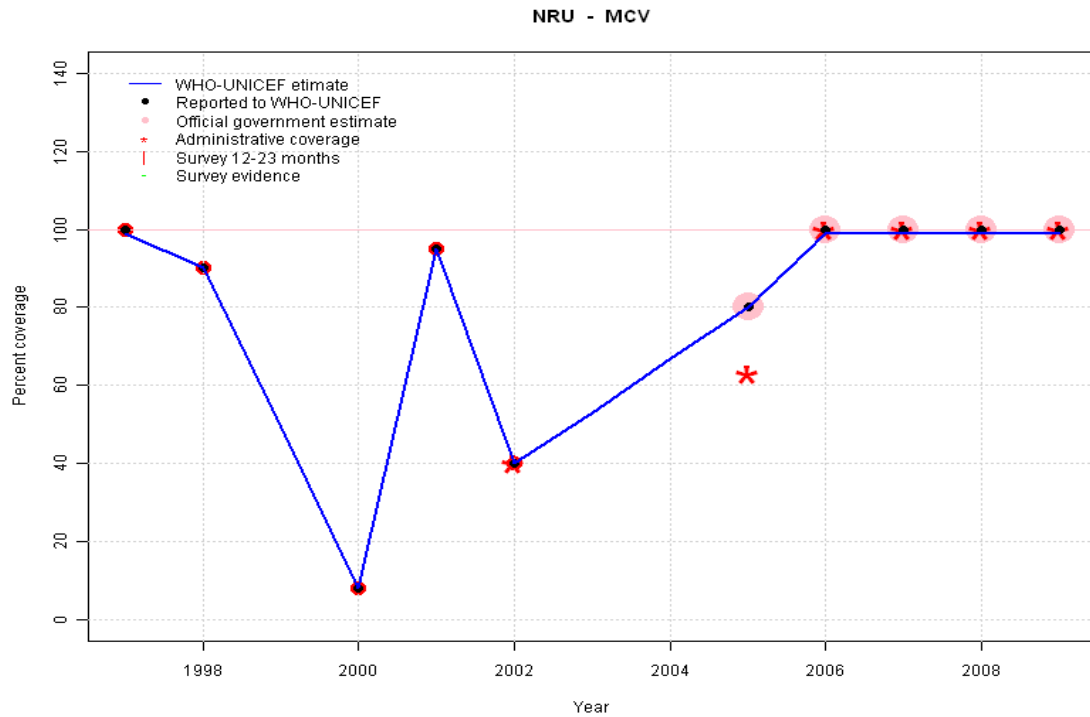
Description:



- 1997: Legacy estimate.
 1998: Estimate based on reported data.
 1999: Estimate based on reported data.
 2000: Estimate based on reported data.
 2001: Estimate based on reported data.
 2002: Estimate based on reported data.
 2003: Estimate based on trend in reported data. Missing or ignored reported value estimated by interpolation between reported values of 59 percent in 2002 and 80 percent in 2005.
 2004: Estimate based on trend in reported data. Missing or ignored reported value estimated by interpolation between reported values of 59 percent in 2002 and 80 percent in 2005.
 2005: Estimate based on reported data.
 2006: Estimate based on reported data. Decline in 2006 is due to OPV stock out due to prolonged power loss.
 2007: Estimate based on reported data.
 2008: Estimate based on reported data.
 2009: Estimate based on reported data.

	1997	1998	1999	2000	2001	2002	2003	2004	2005	2006	2007	2008	2009
Estimate	36	72	64	27	99	59	66	73	80	45	99	99	99
Reported	36	72	64	27	100	59	NA	NA	80	45	100	100	100
Official	NA	NA	NA	NA	NA	59	NA	NA	80	45	100	100	100
Administrative	NA	NA	NA	NA	NA	59	NA	NA	44	45	100	100	100
Survey	NA	NA	NA	NA	NA	NA	NA	NA	NA	NA	NA	NA	NA

Nauru - MCV



Description:

1997: Legacy estimate.

1998: Estimate based on reported data.

1999: Estimate based on trend in reported data. Missing or ignored reported value estimated by interpolation between reported values of 90 percent in 1998 and 8 percent in 2000.

2000: Estimate based on reported data. Decline in 2000 unexplained.

2001: Estimate based on reported data. Increase in 2001 unexplained.

2002: Estimate based on reported data. Decline in 2002 unexplained.

2003: Estimate based on trend in reported data. Missing or ignored reported value estimated by interpolation between reported values of 40 percent in 2002 and 80 percent in 2005.

2004: Estimate based on trend in reported data. Missing or ignored reported value estimated by interpolation between reported values of 40 percent in 2002 and 80 percent in 2005.

2005: Estimate based on reported data.

2006: Estimate based on reported data.

2007: Estimate based on reported data.

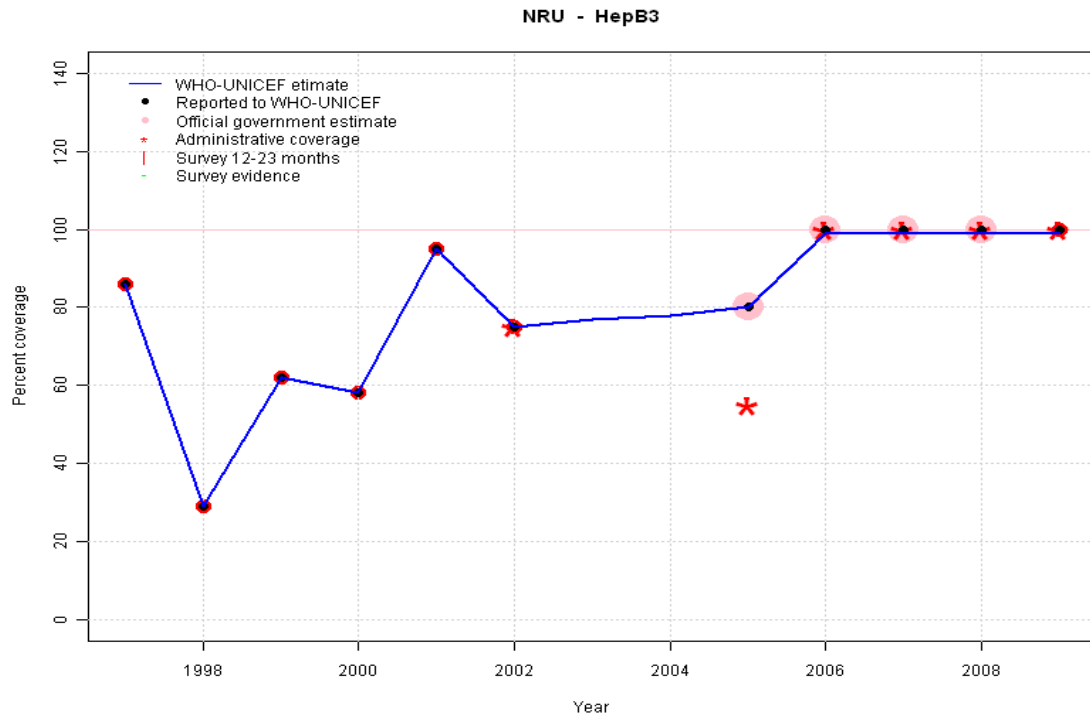
2008: Estimate based on reported data.

2009: Estimate based on reported data.

	1997	1998	1999	2000	2001	2002	2003	2004	2005	2006	2007	2008	2009
Estimate	99	90	49	8	95	40	53	67	80	99	99	99	99
Reported	100	90	NA	8	95	40	NA	NA	80	100	100	100	100
Official	NA	NA	NA	NA	NA	NA	NA	NA	80	100	100	100	100
Administrative	NA	NA	NA	NA	NA	40	NA	NA	63	100	100	100	100
Survey	NA	NA	NA	NA	NA	NA	NA	NA	NA	NA	NA	NA	NA

Nauru - HepB3

Description:



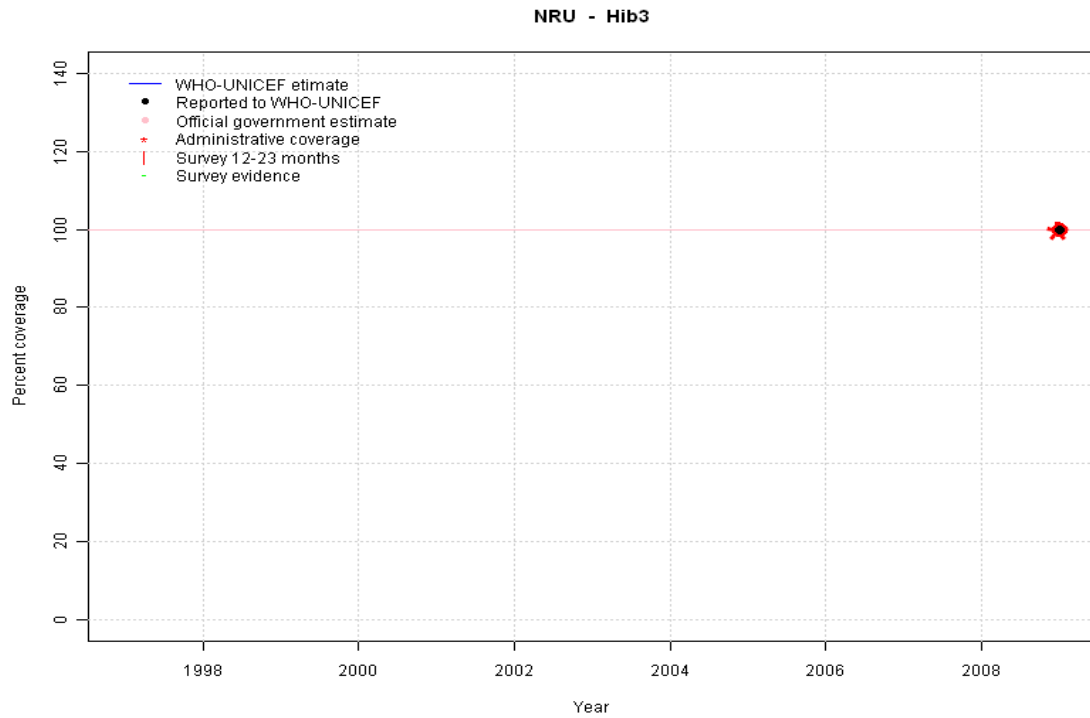
- 1997: Legacy estimate.
- 1998: Estimate based on reported data.
- 1999: Estimate based on reported data.
- 2000: Estimate based on reported data.
- 2001: Estimate based on reported data.
- 2002: Estimate based on reported data.
- 2003: Estimate based on trend in reported data. Missing or ignored reported value estimated by interpolation between reported values of 75 percent in 2002 and 80 percent in 2005.
- 2004: Estimate based on trend in reported data. Missing or ignored reported value estimated by interpolation between reported values of 75 percent in 2002 and 80 percent in 2005.
- 2005: Estimate based on reported data.
- 2006: Estimate based on reported data.
- 2007: Estimate based on reported data.
- 2008: Estimate based on reported data.
- 2009: Estimate based on reported data.

	1997	1998	1999	2000	2001	2002	2003	2004	2005	2006	2007	2008	2009
Estimate	86	29	62	58	95	75	77	78	80	99	99	99	99
Reported	86	29	62	58	95	75	NA	NA	80	100	100	100	100
Official	NA	NA	NA	NA	NA	NA	NA	NA	80	100	100	100	NA
Administrative	NA	NA	NA	NA	NA	75	NA	NA	55	100	100	100	100
Survey	NA	NA	NA	NA	NA	NA	NA	NA	NA	NA	NA	NA	NA

Nauru - Hib3

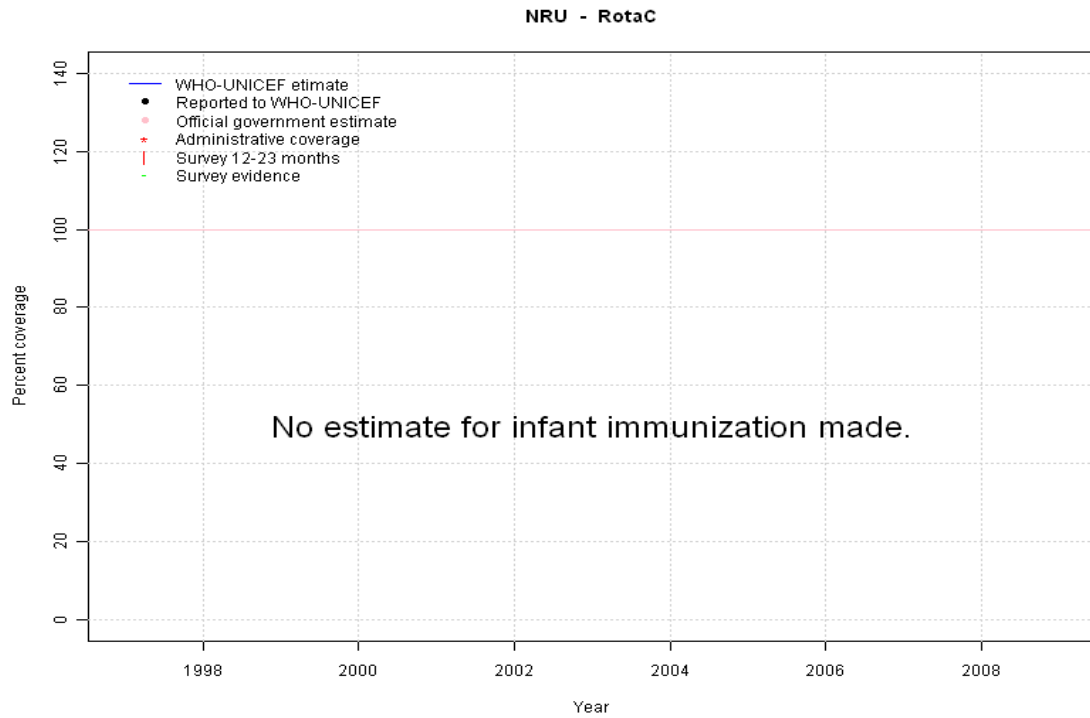
Description:

2009: Estimate based on reported data. Hib introduced in 2009,



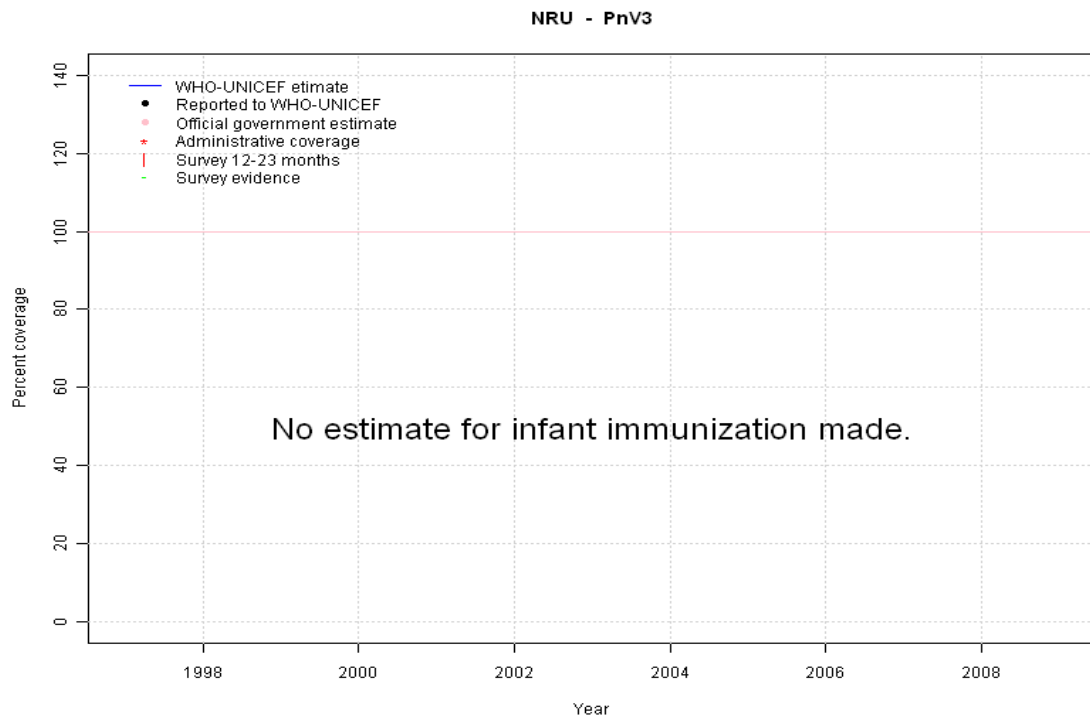
	1997	1998	1999	2000	2001	2002	2003	2004	2005	2006	2007	2008	2009
Estimate	NA	NA	NA	NA	NA	NA	NA	NA	NA	NA	NA	NA	99
Reported	NA	NA	NA	NA	NA	NA	NA	NA	NA	NA	NA	NA	100
Official	NA	NA	NA	NA	NA	NA	NA	NA	NA	NA	NA	NA	NA
Administrative	NA	NA	NA	NA	NA	NA	NA	NA	NA	NA	NA	NA	100
Survey	NA	NA	NA	NA	NA	NA	NA	NA	NA	NA	NA	NA	NA

Nauru - RotaC



	1997	1998	1999	2000	2001	2002	2003	2004	2005	2006	2007	2008	2009
Estimate	NA	NA	NA	NA	NA	NA	NA	NA	NA	NA	NA	NA	NA
Reported	NA	NA	NA	NA	NA	NA	NA	NA	NA	NA	NA	NA	NA
Official	NA	NA	NA	NA	NA	NA	NA	NA	NA	NA	NA	NA	NA
Administrative	NA	NA	NA	NA	NA	NA	NA	NA	NA	NA	NA	NA	NA
Survey	NA	NA	NA	NA	NA	NA	NA	NA	NA	NA	NA	NA	NA

Nauru - PnV3



	1997	1998	1999	2000	2001	2002	2003	2004	2005	2006	2007	2008	2009
Estimate	NA	NA	NA	NA	NA	NA	NA	NA	NA	NA	NA	NA	NA
Reported	NA	NA	NA	NA	NA	NA	NA	NA	NA	NA	NA	NA	NA
Official	NA	NA	NA	NA	NA	NA	NA	NA	NA	NA	NA	NA	NA
Administrative	NA	NA	NA	NA	NA	NA	NA	NA	NA	NA	NA	NA	NA
Survey	NA	NA	NA	NA	NA	NA	NA	NA	NA	NA	NA	NA	NA

Further information and estimates for 1980-1996 are available at:

http://www.childinfo.org/immunization_countryreports.html

http://www.who.int/immunization_monitoring/routine/immunization_coverage/en/index4.html