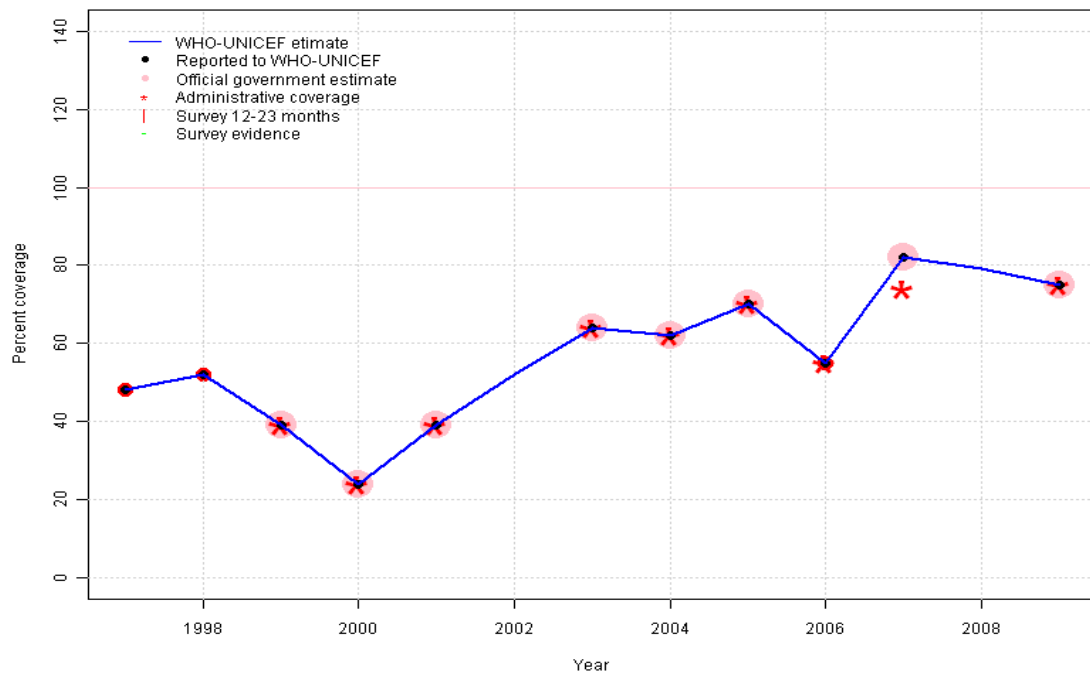


Micronesia (Federated States of) - BCG

FSM - BCG



	1997	1998	1999	2000	2001	2002	2003	2004	2005	2006	2007	2008	2009
Estimate	48	52	39	24	39	52	64	62	70	55	82	79	75
Reported	48	52	39	24	39	NA	64	62	70	55	82	NA	75
Official	NA	NA	39	24	39	NA	64	62	70	NA	82	NA	75
Administrative	NA	NA	39	24	39	NA	64	62	70	55	74	NA	75
Survey	NA	NA	NA	NA	NA	NA	NA	NA	NA	NA	NA	NA	NA

Description:

1997: Legacy estimate.

1998: Estimate based on reported data.

1999: Estimate based on reported data.

2000: Estimate based on reported data.

2001: Estimate based on reported data.

2002: Estimate based on trend in reported data. Missing or ignored reported value estimated by interpolation between reported values of 39 percent in 2001 and 64 percent in 2003.

2003: Estimate based on reported data.

2004: Estimate based on reported data.

2005: Estimate based on reported data.

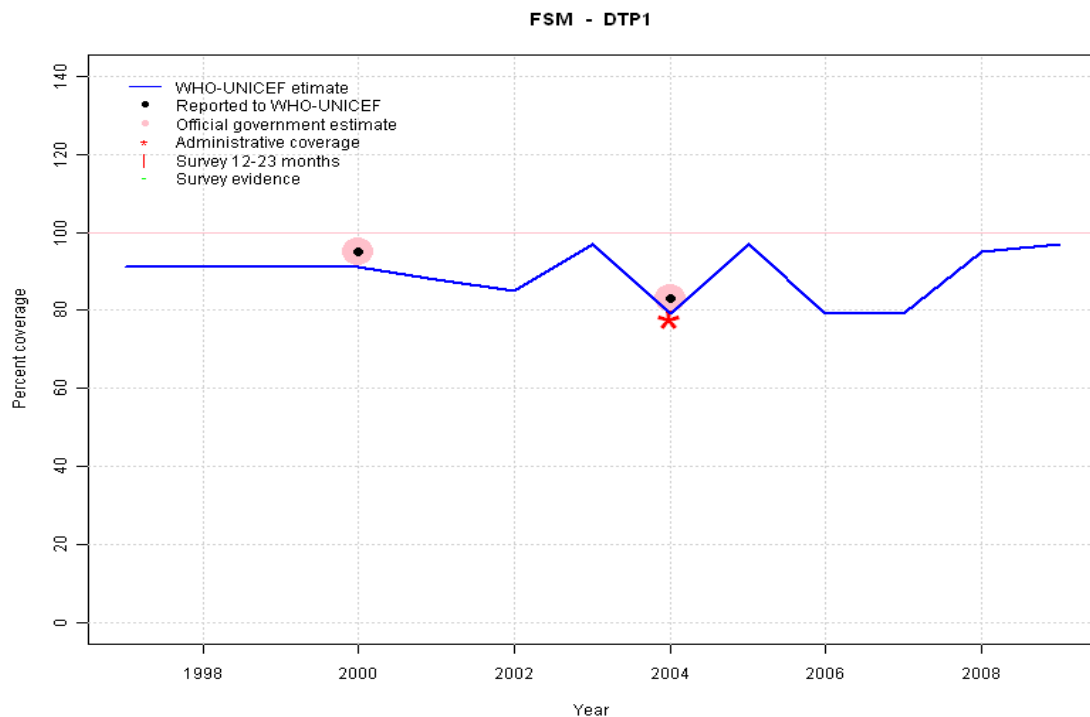
2006: Estimate based on reported data. Decline in 2006 attributed to vaccine shortage.

2007: Estimate based on reported data. Increase in 2007 attributed to catch-up following vaccine shortage in 2006

2008: Estimate based on trend in reported data. Missing or ignored reported value estimated by interpolation between reported values of 82 percent in 2007 and 75 percent in 2009.

2009: Estimate based on reported data.

Micronesia (Federated States of) - DTP1



	1997	1998	1999	2000	2001	2002	2003	2004	2005	2006	2007	2008	2009
Estimate	91	91	91	91	88	85	97	79	97	79	79	95	97
Reported	NA	NA	NA	95	NA	NA	NA	83	NA	NA	NA	NA	NA
Official	NA	NA	NA	95	NA	NA	NA	83	NA	NA	NA	NA	NA
Administrative	NA	NA	NA	NA	NA	NA	NA	78	NA	NA	NA	NA	NA
Survey	NA	NA	NA	NA	NA	NA	NA	NA	NA	NA	NA	NA	NA

Description:

1997: Legacy estimate.

1998: Estimate calibrated to 1997 level (91 percent) and reported coverage (95 percent).

1999: Estimate calibrated to 1997 level (91 percent) and reported coverage (95 percent).

2000: Estimate calibrated to 1997 level (91 percent) and reported coverage (95 percent).

2001: Estimate calibrated to 1997 level (91 percent) and reported coverage (92 percent).

2002: Estimate calibrated to 1997 level (91 percent) and reported coverage (89 percent).

2003: Estimated DTP3 greater than estimated DTP1; DTP1 estimate based on the relationship between DTP1 and DTP3 from 282 surveys.

2004: Estimate calibrated to 1997 level (91 percent) and reported coverage (83 percent).

2005: Estimated DTP3 greater than estimated DTP1; DTP1 estimate based on the relationship between DTP1 and DTP3 from 282 surveys.

2006: Estimate calibrated to 1997 level (91 percent) and reported coverage (83 percent).

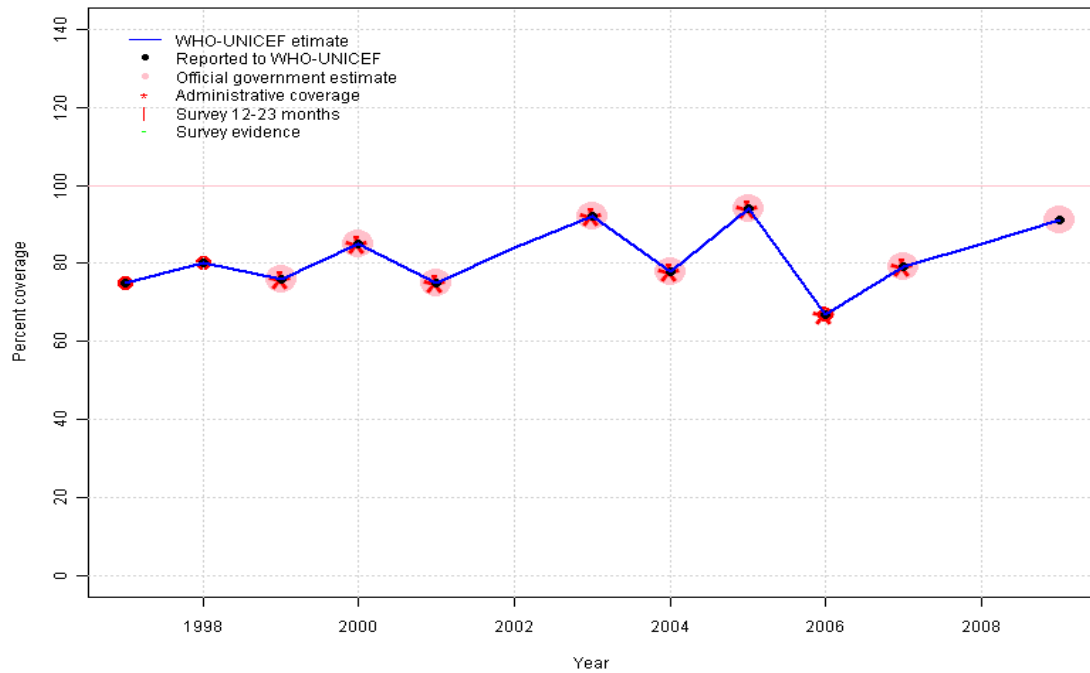
2007: Estimate calibrated to 1997 level (91 percent) and reported coverage (83 percent).

2008: Estimated DTP3 greater than estimated DTP1; DTP1 estimate based on the relationship between DTP1 and DTP3 from 282 surveys.

2009: Estimated DTP3 greater than estimated DTP1; DTP1 estimate based on the relationship between DTP1 and DTP3 from 282 surveys.

Micronesia (Federated States of) - DTP3

FSM - DTP3



	1997	1998	1999	2000	2001	2002	2003	2004	2005	2006	2007	2008	2009
Estimate	75	80	76	85	75	84	92	78	94	67	79	85	91
Reported	75	80	76	85	75	NA	92	78	94	67	79	NA	91
Official	NA	NA	76	85	75	NA	92	78	94	NA	79	NA	91
Administrative	NA	NA	76	85	75	NA	92	78	94	67	79	NA	NA
Survey	NA	NA	NA	NA	NA	NA	NA	NA	NA	NA	NA	NA	NA

Description:

1997: Legacy estimate.

1998: Estimate based on reported data.

1999: Estimate based on reported data.

2000: Estimate based on reported data.

2001: Estimate based on reported data.

2002: Estimate based on trend in reported data. Missing or ignored reported value estimated by interpolation between reported values of 75 percent in 2001 and 92 percent in 2003.

2003: Estimate based on reported data.

2004: Estimate based on reported data.

2005: Estimate based on reported data.

2006: Estimate based on reported data. Decline in 2006 attributed to vaccine shortage.

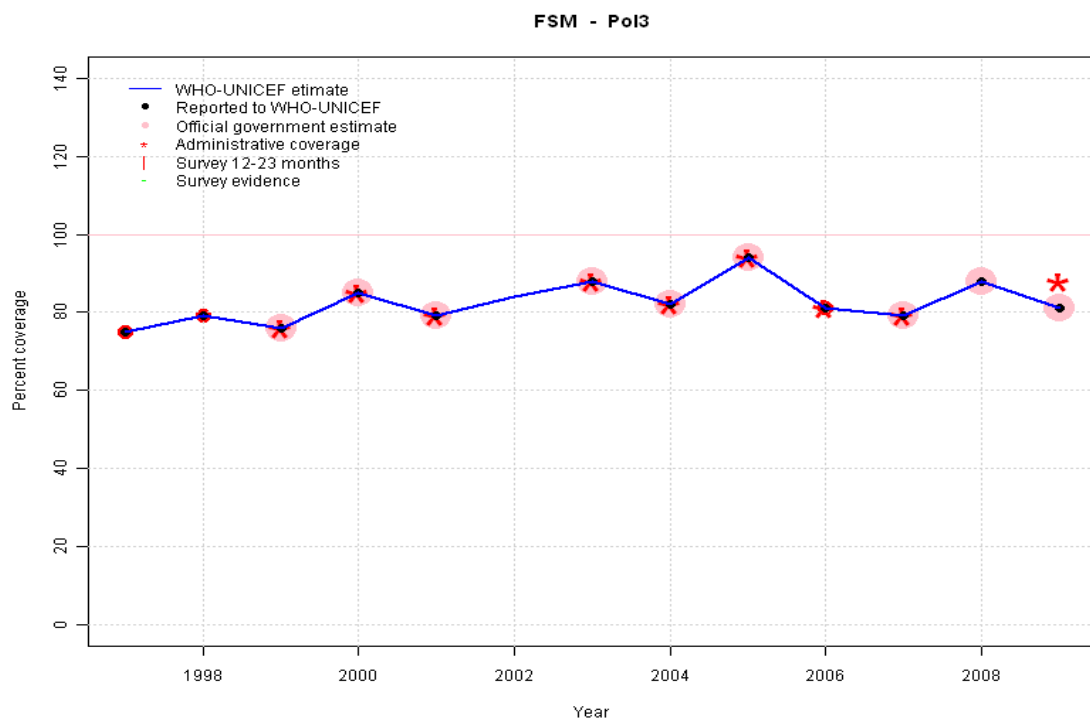
2007: Estimate based on reported data. Increase in 2007 attributed to catch-up following vaccine shortage in 2006

2008: Estimate based on trend in reported data. Missing or ignored reported value estimated by interpolation between reported values of 79 percent in 2007 and 91 percent in 2009.

2009: Estimate based on reported data.

Micronesia (Federated States of) - Pol3

Description:

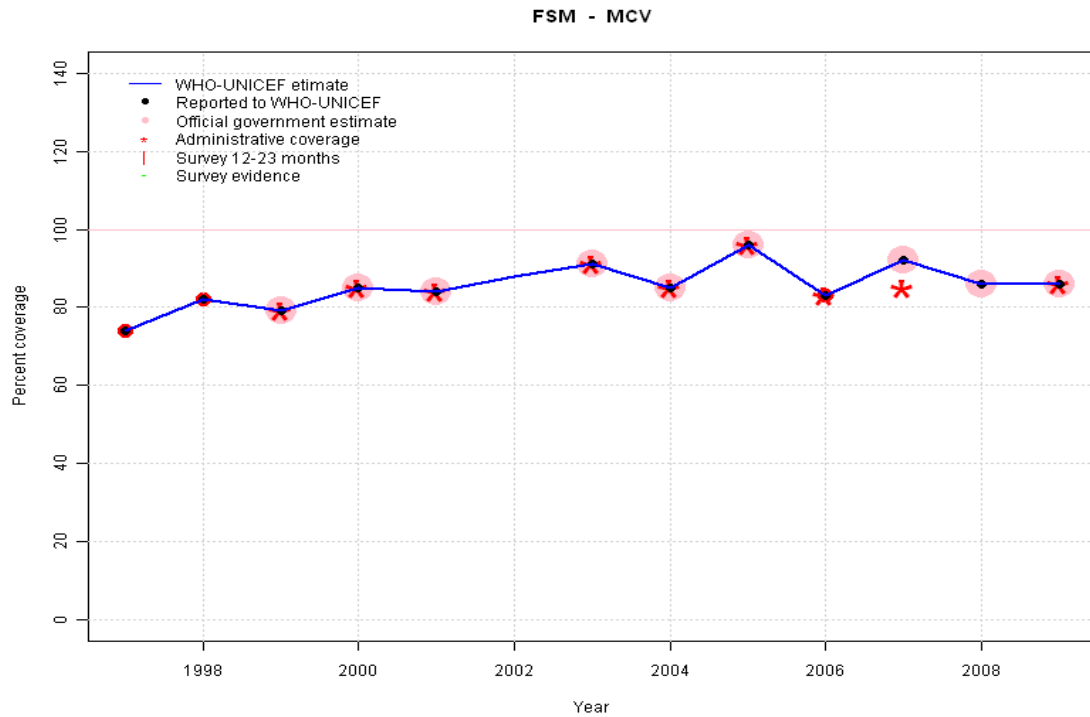


1997: Legacy estimate.
 1998: Estimate based on reported data.
 1999: Estimate based on reported data.
 2000: Estimate based on reported data.
 2001: Estimate based on reported data.
 2002: Estimate based on trend in reported data. Missing or ignored reported value estimated by interpolation between reported values of 79 percent in 2001 and 88 percent in 2003.
 2003: Estimate based on reported data.
 2004: Estimate based on reported data.
 2005: Estimate based on reported data.
 2006: Estimate based on reported data.
 2007: Estimate based on reported data.
 2008: Estimate based on reported data.
 2009: Estimate based on reported data.

	1997	1998	1999	2000	2001	2002	2003	2004	2005	2006	2007	2008	2009
Estimate	75	79	76	85	79	84	88	82	94	81	79	88	81
Reported	75	79	76	85	79	NA	88	82	94	81	79	88	81
Official	NA	NA	76	85	79	NA	88	82	94	NA	79	88	81
Administrative	NA	NA	76	85	79	NA	88	82	94	81	79	NA	88
Survey	NA	NA	NA	NA	NA	NA	NA	NA	NA	NA	NA	NA	NA

Micronesia (Federated States of) - MCV

Description:

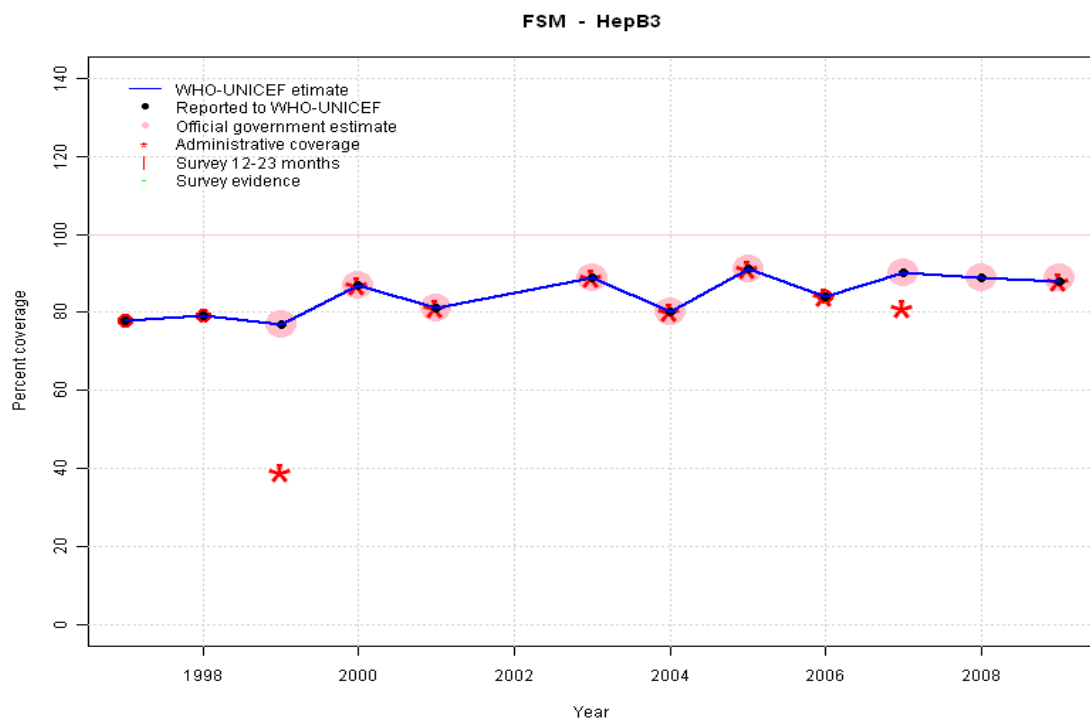


1997: Legacy estimate.
 1998: Estimate based on reported data.
 1999: Estimate based on reported data.
 2000: Estimate based on reported data.
 2001: Estimate based on reported data.
 2002: Estimate based on trend in reported data. Missing or ignored reported value estimated by interpolation between reported values of 84 percent in 2001 and 91 percent in 2003.
 2003: Estimate based on reported data.
 2004: Estimate based on reported data.
 2005: Estimate based on reported data.
 2006: Estimate based on reported data.
 2007: Estimate based on reported data.
 2008: Estimate based on reported data.
 2009: Estimate based on reported data.

	1997	1998	1999	2000	2001	2002	2003	2004	2005	2006	2007	2008	2009
Estimate	74	82	79	85	84	88	91	85	96	83	92	86	86
Reported	74	82	79	85	84	NA	91	85	96	83	92	86	86
Official	NA	NA	79	85	84	NA	91	85	96	NA	92	86	86
Administrative	NA	NA	79	85	84	NA	91	85	96	83	85	NA	86
Survey	NA	NA	NA	NA	NA	NA	NA	NA	NA	NA	NA	NA	NA

Micronesia (Federated States of) - HepB3

Description:

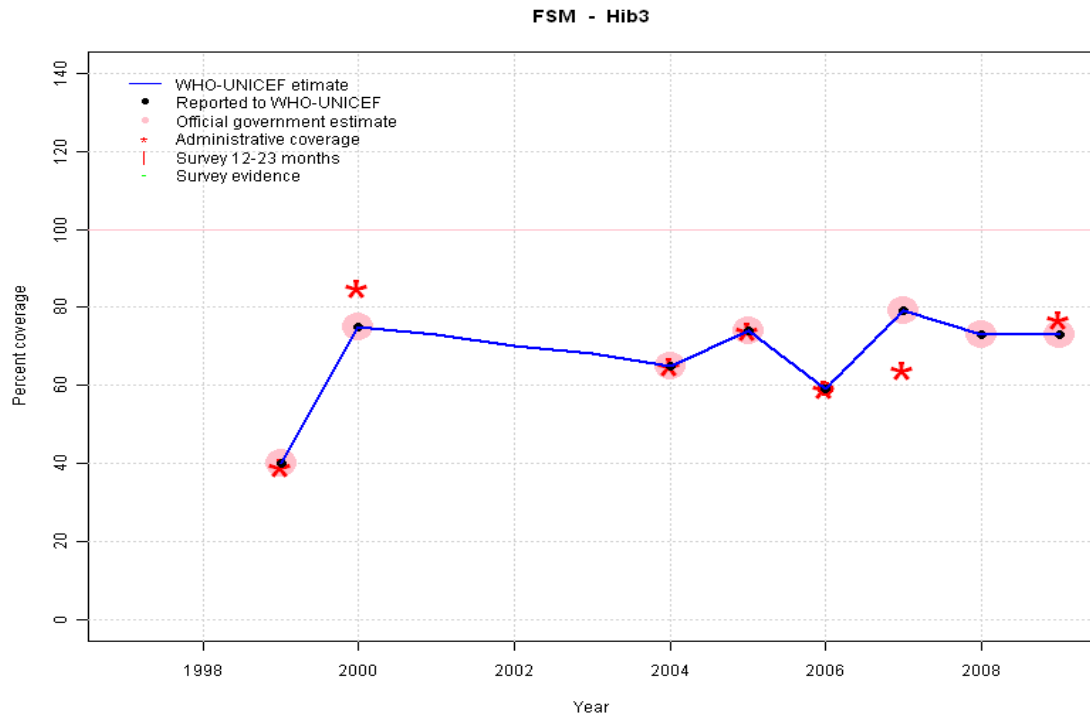


1997: Legacy estimate.
 1998: Estimate based on reported data.
 1999: Estimate based on reported data.
 2000: Estimate based on reported data.
 2001: Estimate based on reported data.
 2002: Estimate based on trend in reported data. Missing or ignored reported value estimated by interpolation between reported values of 81 percent in 2001 and 89 percent in 2003.
 2003: Estimate based on reported data.
 2004: Estimate based on reported data.
 2005: Estimate based on reported data.
 2006: Estimate based on reported data.
 2007: Estimate based on reported data.
 2008: Estimate based on reported data.
 2009: Estimate based on reported data.

	1997	1998	1999	2000	2001	2002	2003	2004	2005	2006	2007	2008	2009
Estimate	78	79	77	87	81	85	89	80	91	84	90	89	88
Reported	78	79	77	87	81	NA	89	80	91	84	90	89	88
Official	NA	NA	77	87	81	NA	89	80	91	NA	90	89	89
Administrative	NA	NA	39	87	81	NA	89	80	91	84	81	NA	88
Survey	NA	NA	NA	NA	NA	NA	NA	NA	NA	NA	NA	NA	NA

Micronesia (Federated States of) - Hib3

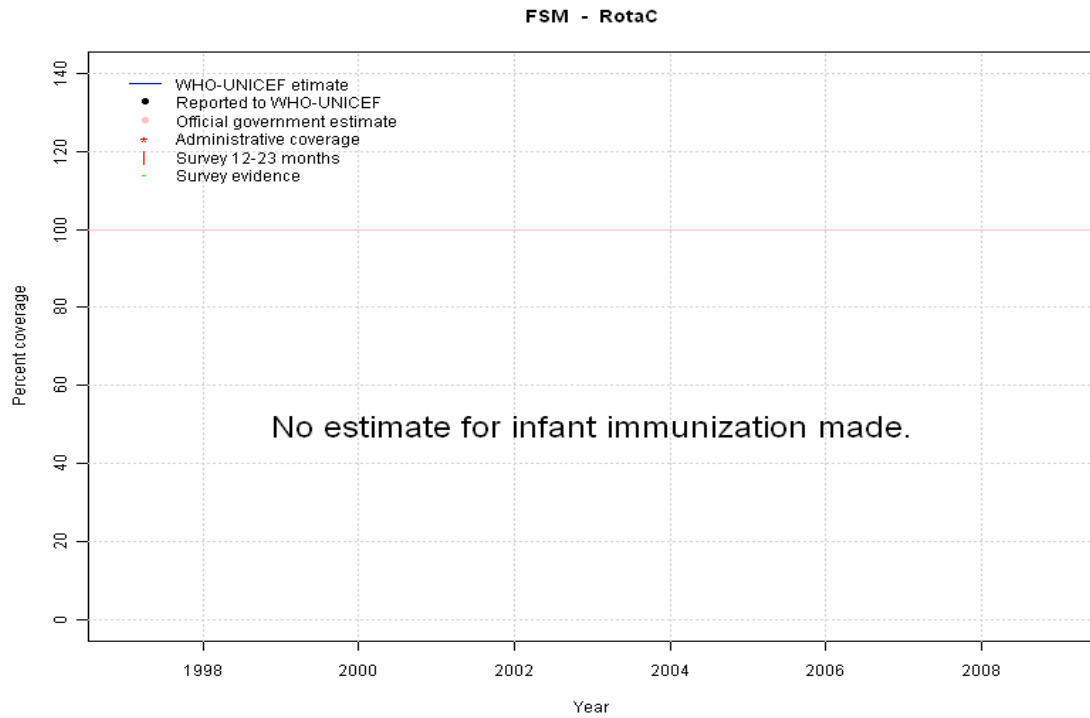
Description:



- 1999: Estimate based on reported data. Hib introduced in 1996. Reporting started in 1999. Vaccine presentation is Hib mono.
- 2000: Estimate based on reported data.
- 2001: Estimate based on reported data. Missing or ignored reported value estimated by interpolation between reported values of 75 percent in 2000 and 65 percent in 2004.
- 2002: Estimate based on reported data. Missing or ignored reported value estimated by interpolation between reported values of 75 percent in 2000 and 65 percent in 2004.
- 2003: Estimate based on reported data. Missing or ignored reported value estimated by interpolation between reported values of 75 percent in 2000 and 65 percent in 2004.
- 2004: Estimate based on reported data.
- 2005: Estimate based on reported data.
- 2006: Estimate based on reported data.
- 2007: Estimate based on reported data.
- 2008: Estimate based on reported data.
- 2009: Estimate based on reported data.

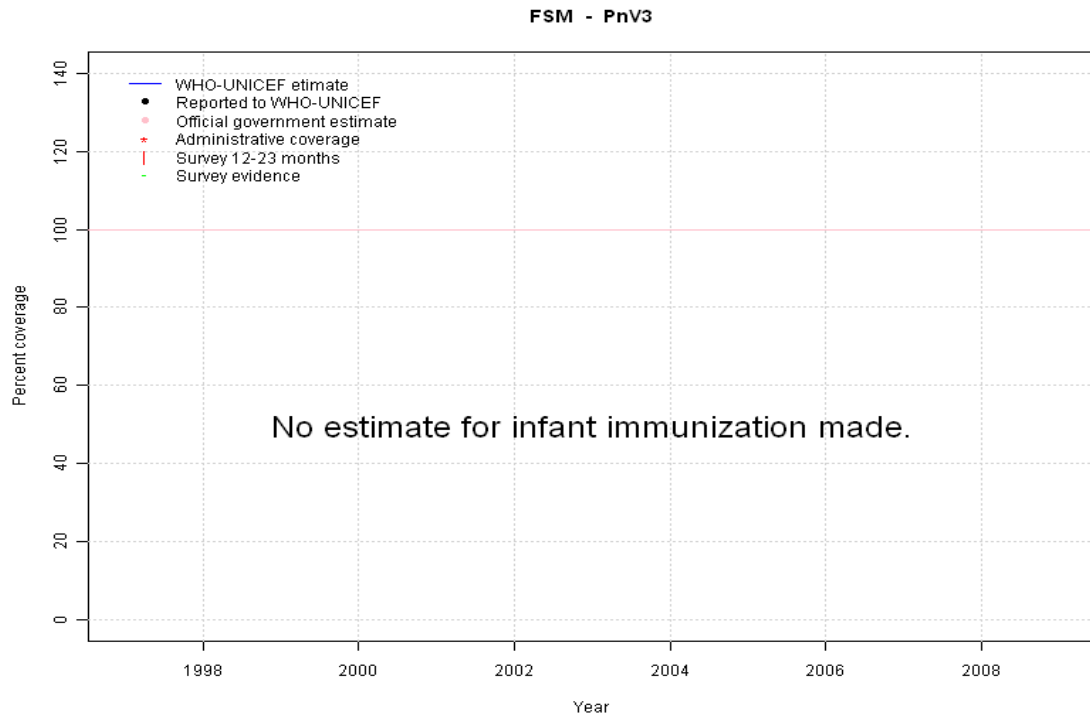
	1997	1998	1999	2000	2001	2002	2003	2004	2005	2006	2007	2008	2009
Estimate	NA	NA	40	75	73	70	68	65	74	59	79	73	73
Reported	NA	NA	40	75	NA	NA	NA	65	74	59	79	73	73
Official	NA	NA	40	75	NA	NA	NA	65	74	NA	79	73	73
Administrative	NA	NA	39	85	NA	NA	NA	65	74	59	64	NA	77
Survey	NA	NA	NA	NA	NA	NA	NA	NA	NA	NA	NA	NA	NA

Micronesia (Federated States of) - RotaC



	1997	1998	1999	2000	2001	2002	2003	2004	2005	2006	2007	2008	2009
Estimate	NA	NA	NA	NA	NA	NA	NA	NA	NA	NA	NA	NA	NA
Reported	NA	NA	NA	NA	NA	NA	NA	NA	NA	NA	NA	NA	NA
Official	NA	NA	NA	NA	NA	NA	NA	NA	NA	NA	NA	NA	NA
Administrative	NA	NA	NA	NA	NA	NA	NA	NA	NA	NA	NA	NA	NA
Survey	NA	NA	NA	NA	NA	NA	NA	NA	NA	NA	NA	NA	NA

Micronesia (Federated States of) - PnV3



	1997	1998	1999	2000	2001	2002	2003	2004	2005	2006	2007	2008	2009
Estimate	NA	NA	NA	NA	NA	NA	NA	NA	NA	NA	NA	NA	NA
Reported	NA	NA	NA	NA	NA	NA	NA	NA	NA	NA	NA	NA	NA
Official	NA	NA	NA	NA	NA	NA	NA	NA	NA	NA	NA	NA	NA
Administrative	NA	NA	NA	NA	NA	NA	NA	NA	NA	NA	NA	NA	NA
Survey	NA	NA	NA	NA	NA	NA	NA	NA	NA	NA	NA	NA	NA

Further information and estimates for 1980-1996 are available at:

http://www.childinfo.org/immunization_countryreports.html

http://www.who.int/immunization_monitoring/routine/immunization_coverage/en/index4.html