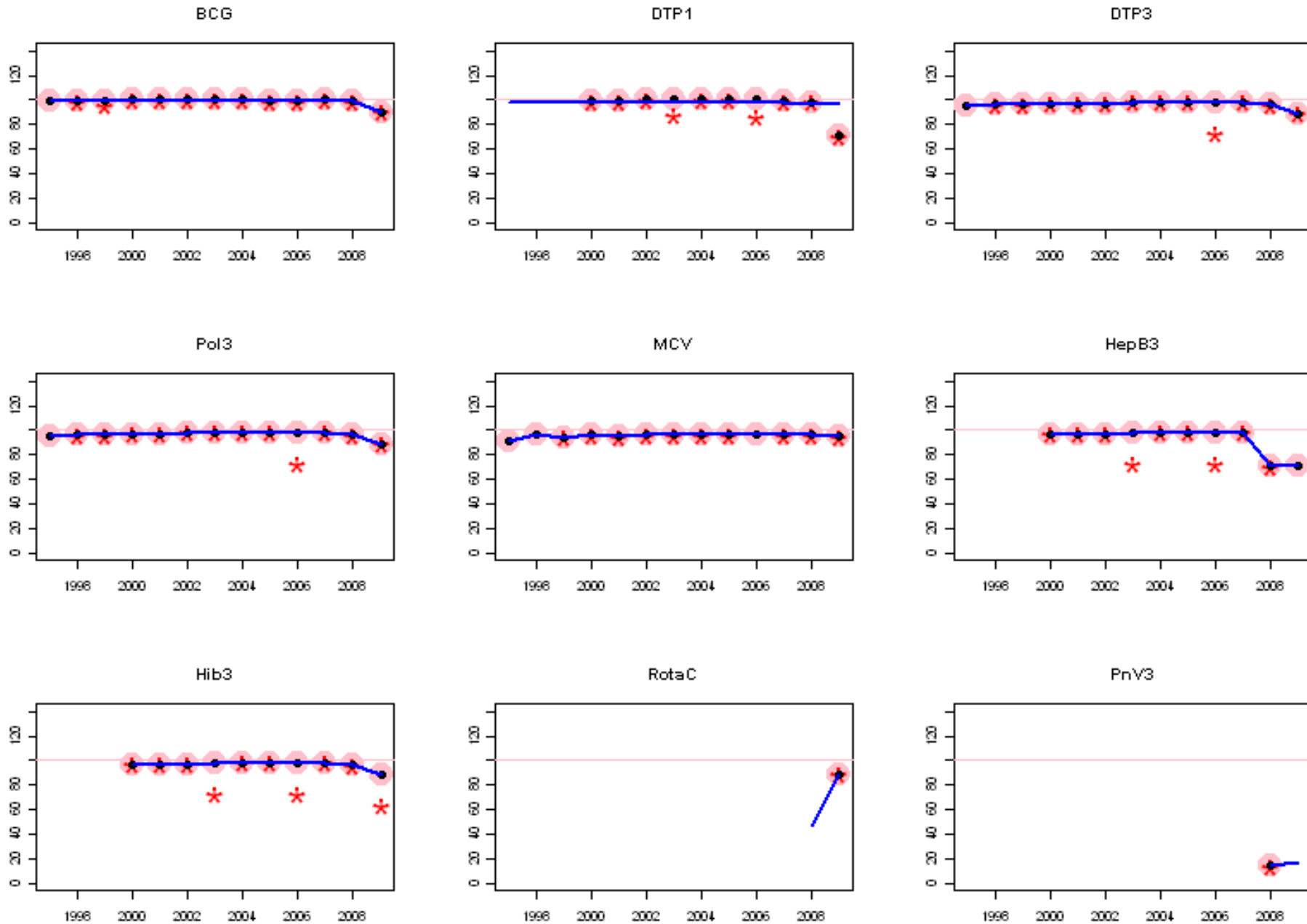
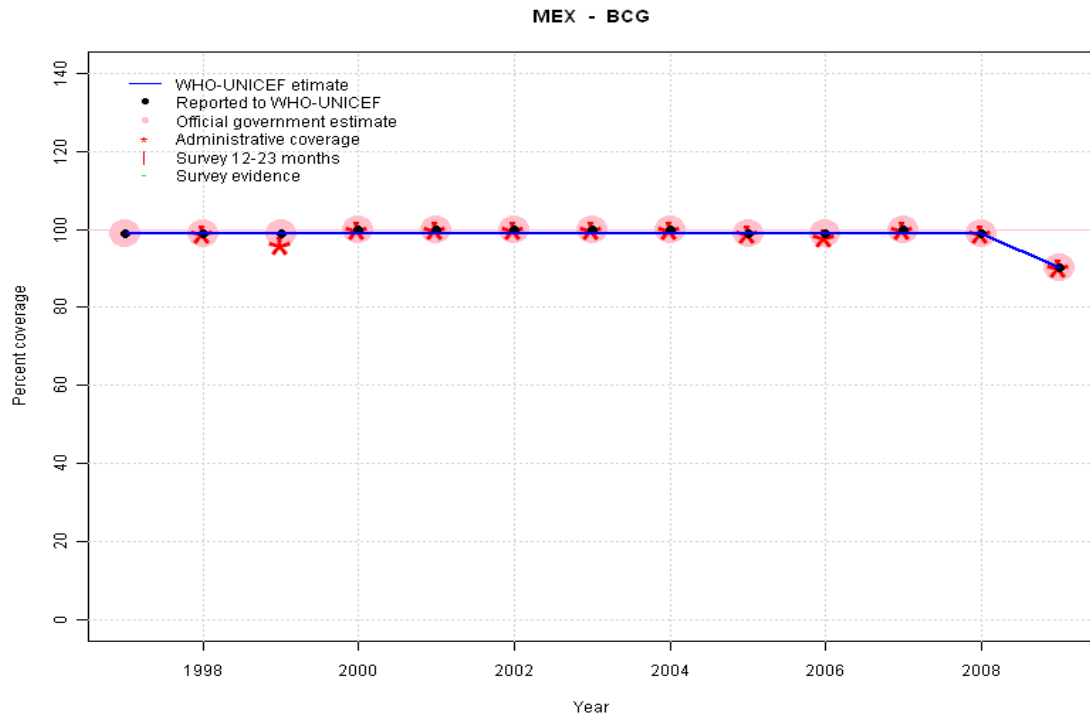


Mexico: WHO and UNICEF estimates of immunization coverage, 1997 - 2009



# Mexico - BCG

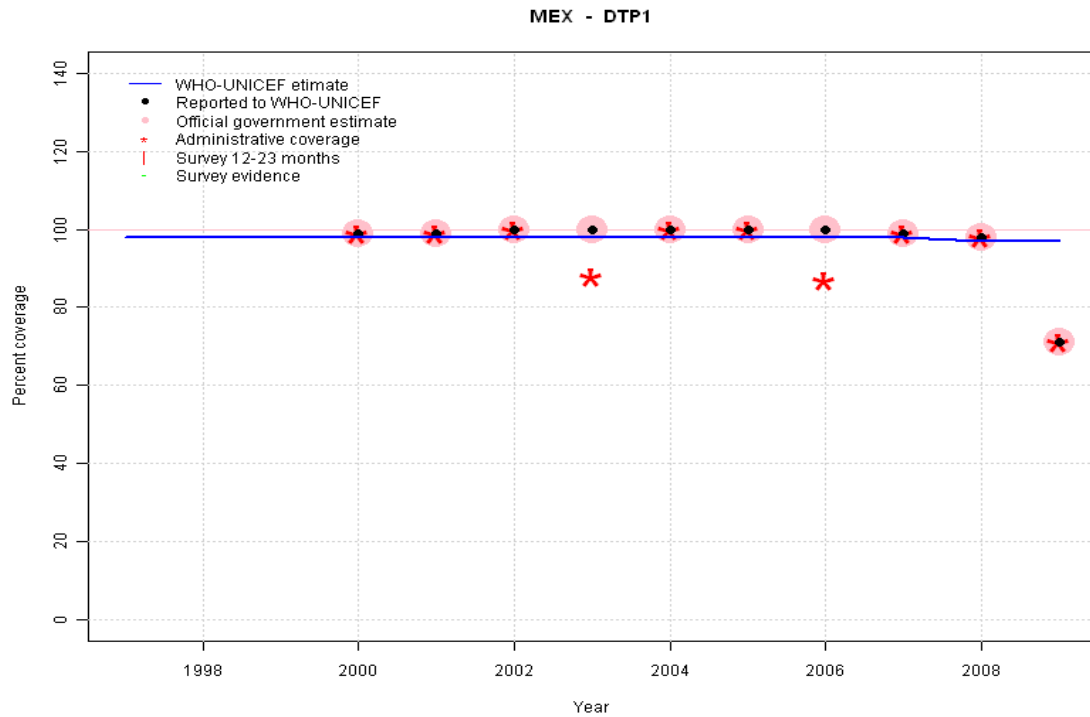
## Description:



- 1997: Legacy estimate.
- 1998: Estimate based on reported data.
- 1999: Estimate based on reported data.
- 2000: Estimate based on reported data.
- 2001: Estimate based on reported data.
- 2002: Estimate based on reported data.
- 2003: Estimate based on reported data.
- 2004: Estimate based on reported data.
- 2005: Estimate based on reported data.
- 2006: Estimate based on reported data.
- 2007: Estimate based on reported data.
- 2008: Estimate based on reported data. Estimated number of children in target populations varies between antigens and across years. Nationally estimated target is approximately 20 percent lower than that estimated by the UN Population Division.
- 2009: Estimate based on reported data.

	1997	1998	1999	2000	2001	2002	2003	2004	2005	2006	2007	2008	2009
Estimate	99	99	99	99	99	99	99	99	99	99	99	99	90
Reported	99	99	99	100	100	100	100	100	99	99	100	99	90
Official	99	99	99	100	100	100	100	100	99	99	100	99	90
Administrative	NA	99	96	100	100	100	100	100	99	98	100	99	90
Survey	NA	NA	NA	NA	NA	NA	NA	NA	NA	NA	NA	NA	NA

# Mexico - DTP1



	1997	1998	1999	2000	2001	2002	2003	2004	2005	2006	2007	2008	2009
Estimate	98	98	98	98	98	98	98	98	98	98	98	97	97
Reported	NA	NA	NA	99	99	100	100	100	100	100	99	98	71
Official	NA	NA	NA	99	99	100	100	100	100	100	99	98	71
Administrative	NA	NA	NA	99	99	100	88	100	100	87	99	98	71
Survey	NA	NA	NA	NA	NA	NA	NA	NA	NA	NA	NA	NA	NA

## Description:

1997: Legacy estimate.

1998: Estimate calibrated to 1997 level (98 percent) and reported coverage (99 percent).

1999: Estimate calibrated to 1997 level (98 percent) and reported coverage (99 percent).

2000: Estimate calibrated to 1997 level (98 percent) and reported coverage (99 percent).

2001: Estimate calibrated to 1997 level (98 percent) and reported coverage (99 percent).

2002: Estimate calibrated to 1997 level (98 percent) and reported coverage (99 percent).

2003: Estimate calibrated to 1997 level (98 percent) and reported coverage (99 percent).

2004: Estimate calibrated to 1997 level (98 percent) and reported coverage (99 percent).

2005: Estimate calibrated to 1997 level (98 percent) and reported coverage (99 percent).

2006: Estimate calibrated to 1997 level (98 percent) and reported coverage (99 percent).

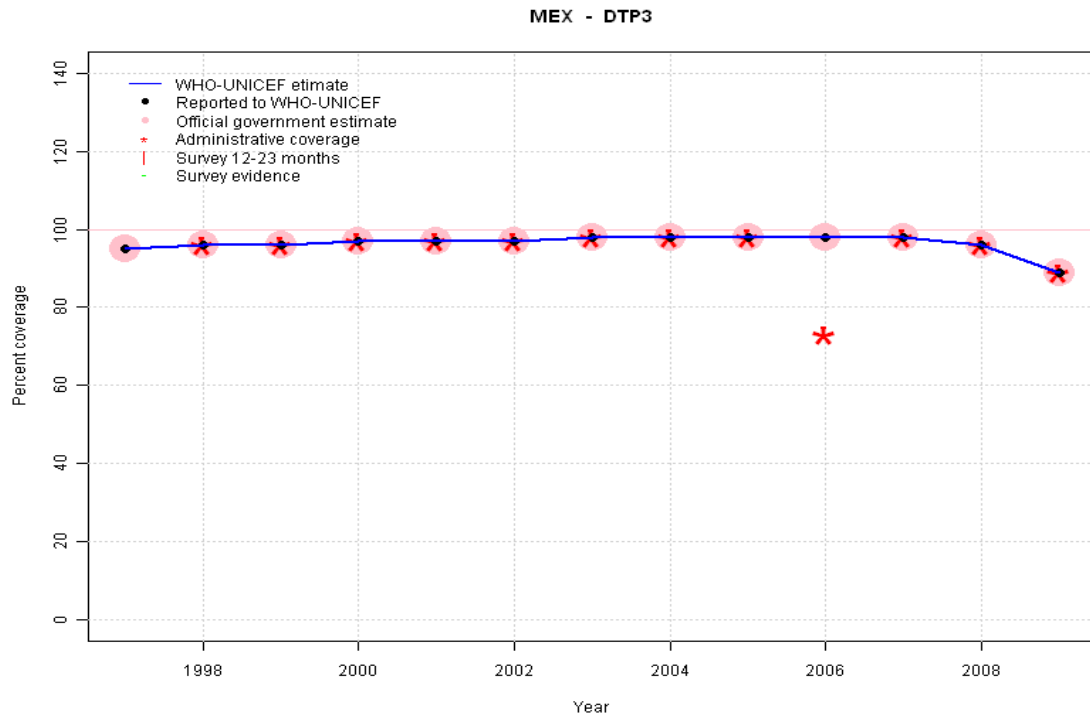
2007: Estimate calibrated to 1997 level (98 percent) and reported coverage (99 percent).

2008: Estimate calibrated to 1997 level (98 percent) and reported coverage (98 percent). Estimated number of children in target populations varies between antigens and across years. Nationally estimated target is approximately 20 percent lower than that estimated by the UN Population Division.

2009: Estimate calibrated to 1997 level (98 percent) and reported coverage (98 percent). 2009 reported data (71 percent) inconsistent with data from other years.

# Mexico - DTP3

## Description:

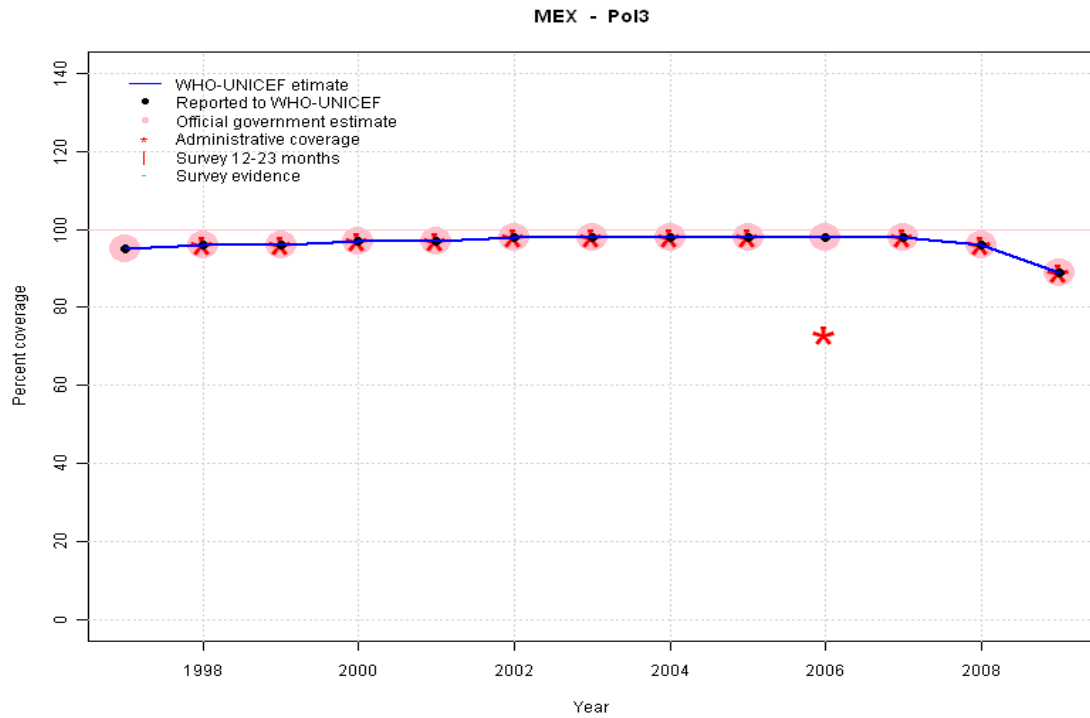


- 1997: Legacy estimate.
- 1998: Estimate based on reported data.
- 1999: Estimate based on reported data.
- 2000: Estimate based on reported data.
- 2001: Estimate based on reported data.
- 2002: Estimate based on reported data.
- 2003: Estimate based on reported data.
- 2004: Estimate based on reported data.
- 2005: Estimate based on reported data.
- 2006: Estimate based on reported data.
- 2007: Estimate based on reported data.
- 2008: Estimate based on reported data. Estimated number of children in target populations varies between antigens and across years. Nationally estimated target is approximately 20 percent lower than that estimated by the UN Population Division.
- 2009: Estimate based on reported data.

	1997	1998	1999	2000	2001	2002	2003	2004	2005	2006	2007	2008	2009
Estimate	95	96	96	97	97	97	98	98	98	98	98	96	89
Reported	95	96	96	97	97	97	98	98	98	98	98	96	89
Official	95	96	96	97	97	97	98	98	98	98	98	96	89
Administrative	NA	96	96	97	97	97	98	98	98	73	98	96	89
Survey	NA	NA	NA	NA	NA	NA	NA	NA	NA	NA	NA	NA	NA

# Mexico - Pol3

## Description:

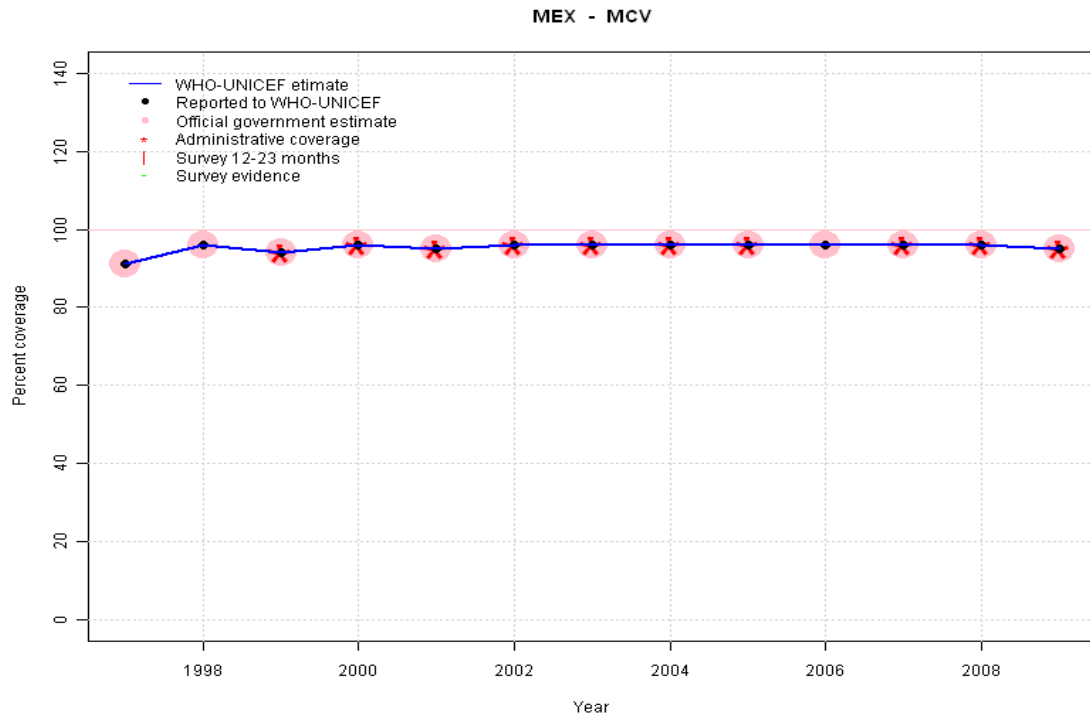


- 1997: Legacy estimate.
- 1998: Estimate based on reported data.
- 1999: Estimate based on reported data.
- 2000: Estimate based on reported data.
- 2001: Estimate based on reported data.
- 2002: Estimate based on reported data.
- 2003: Estimate based on reported data.
- 2004: Estimate based on reported data.
- 2005: Estimate based on reported data.
- 2006: Estimate based on reported data.
- 2007: Estimate based on reported data.
- 2008: Estimate based on reported data. Estimated number of children in target populations varies between antigens and across years. Nationally estimated target is approximately 20 percent lower than that estimated by the UN Population Division.
- 2009: Estimate based on reported data.

	1997	1998	1999	2000	2001	2002	2003	2004	2005	2006	2007	2008	2009
Estimate	95	96	96	97	97	98	98	98	98	98	98	96	89
Reported	95	96	96	97	97	98	98	98	98	98	98	96	89
Official	95	96	96	97	97	98	98	98	98	98	98	96	89
Administrative	NA	96	96	97	97	98	98	98	98	73	98	96	89
Survey	NA	NA	NA	NA	NA	NA	NA	NA	NA	NA	NA	NA	NA

# Mexico - MCV

## Description:

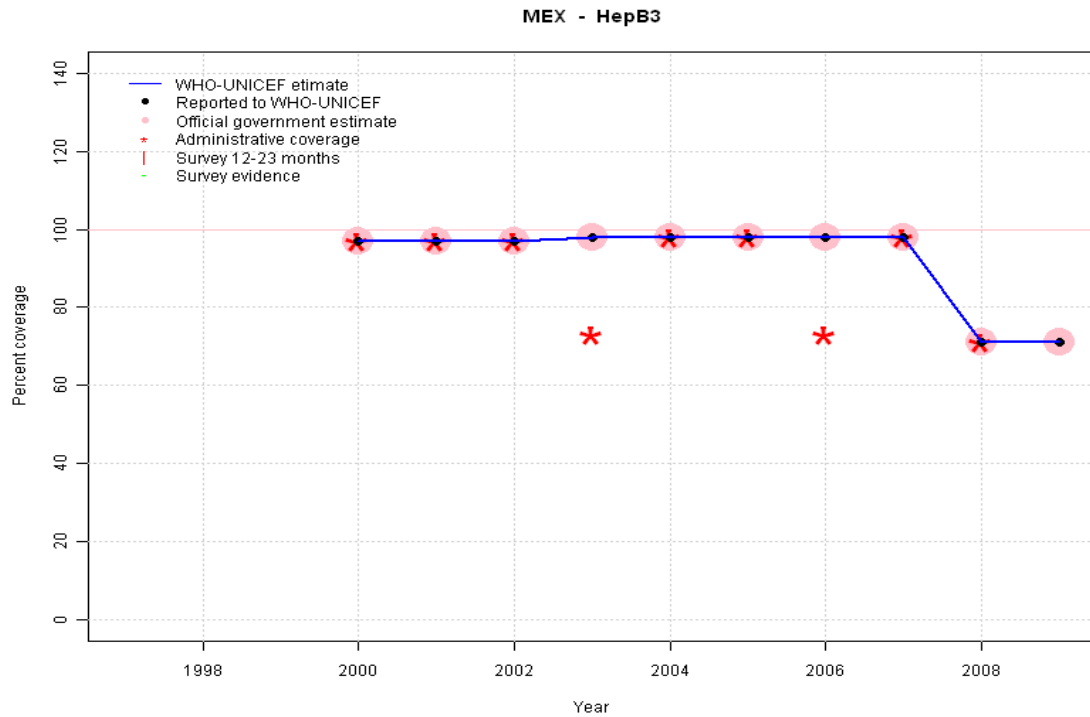


- 1997: Legacy estimate.
- 1998: Estimate based on reported data.
- 1999: Estimate based on reported data.
- 2000: Estimate based on reported data.
- 2001: Estimate based on reported data.
- 2002: Estimate based on reported data.
- 2003: Estimate based on reported data.
- 2004: Estimate based on reported data.
- 2005: Estimate based on reported data.
- 2006: Estimate based on reported data.
- 2007: Estimate based on reported data.
- 2008: Estimate based on reported data. Estimated number of children in target populations varies between antigens and across years. Nationally estimated target is approximately 20 percent lower than that estimated by the UN Population Division.
- 2009: Estimate based on reported data.

	1997	1998	1999	2000	2001	2002	2003	2004	2005	2006	2007	2008	2009
Estimate	91	96	94	96	95	96	96	96	96	96	96	96	95
Reported	91	96	94	96	95	96	96	96	96	96	96	96	95
Official	91	96	94	96	95	96	96	96	96	96	96	96	95
Administrative	NA	NA	94	96	95	96	96	96	96	NA	96	96	95
Survey	NA	NA	NA	NA	NA	NA	NA	NA	NA	NA	NA	NA	NA

# Mexico - HepB3

## Description:

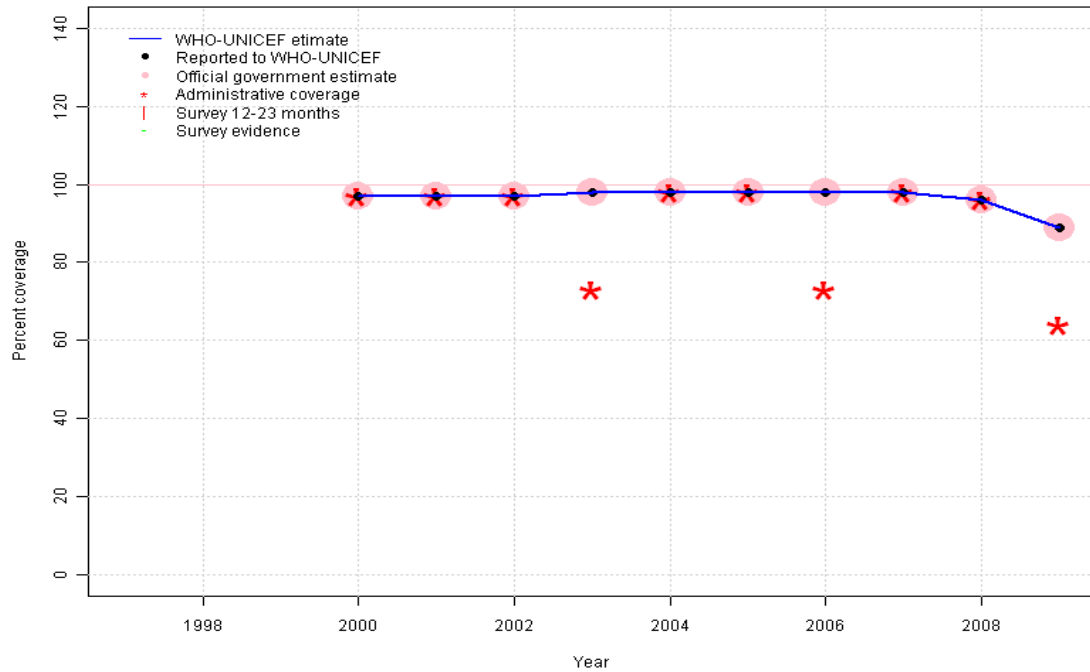


- 2000: Estimate based on reported data. HepB introduced in 1999. Reporting started in 2000. Vaccine presentation is HepB .
- 2001: Estimate based on reported data.
- 2002: Estimate based on reported data.
- 2003: Estimate based on reported data.
- 2004: Estimate based on reported data.
- 2005: Estimate based on reported data.
- 2006: Estimate based on reported data.
- 2007: Estimate based on reported data.
- 2008: Estimate based on reported data. Estimated number of children in target populations varies between antigens and across years. Nationally estimated target is approximately 20 percent lower than that estimated by the UN Population Division.
- 2009: Estimate based on reported data.

	1997	1998	1999	2000	2001	2002	2003	2004	2005	2006	2007	2008	2009
Estimate	NA	NA	NA	97	97	97	98	98	98	98	98	71	71
Reported	NA	NA	NA	97	97	97	98	98	98	98	98	71	71
Official	NA	NA	NA	97	97	97	98	98	98	98	98	71	71
Administrative	NA	NA	NA	97	97	97	73	98	98	73	98	71	160
Survey	NA	NA	NA	NA	NA	NA	NA	NA	NA	NA	NA	NA	NA

# Mexico - Hib3

MEX - Hib3

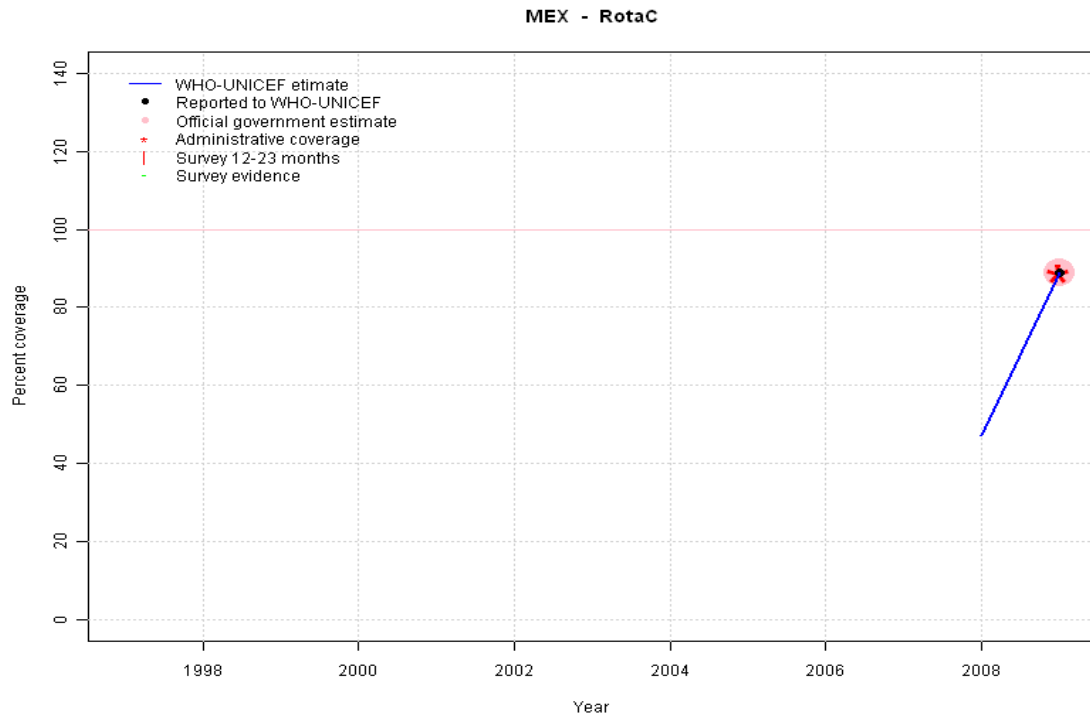


## Description:

- 2000: Estimate based on reported data. Hib introduced in 1999. Reporting started in 2000. Vaccine presentation is DTP-HepB-Hib.
- 2001: Estimate based on reported data.
- 2002: Estimate based on reported data.
- 2003: Estimate based on reported data.
- 2004: Estimate based on reported data.
- 2005: Estimate based on reported data.
- 2006: Estimate based on reported data.
- 2007: Estimate based on reported data.
- 2008: Estimate based on reported data. Estimated number of children in target populations varies between antigens and across years. Nationally estimated target is approximately 20 percent lower than that estimated by the UN Population Division.
- 2009: Estimate based on reported data.

	1997	1998	1999	2000	2001	2002	2003	2004	2005	2006	2007	2008	2009
Estimate	NA	NA	NA	97	97	97	98	98	98	98	98	96	89
Reported	NA	NA	NA	97	97	97	98	98	98	98	98	96	89
Official	NA	NA	NA	97	97	97	98	98	98	98	98	96	89
Administrative	NA	NA	NA	97	97	97	73	98	98	73	98	96	64
Survey	NA	NA	NA	NA	NA	NA	NA	NA	NA	NA	NA	NA	NA

# Mexico - RotaC



## Description:

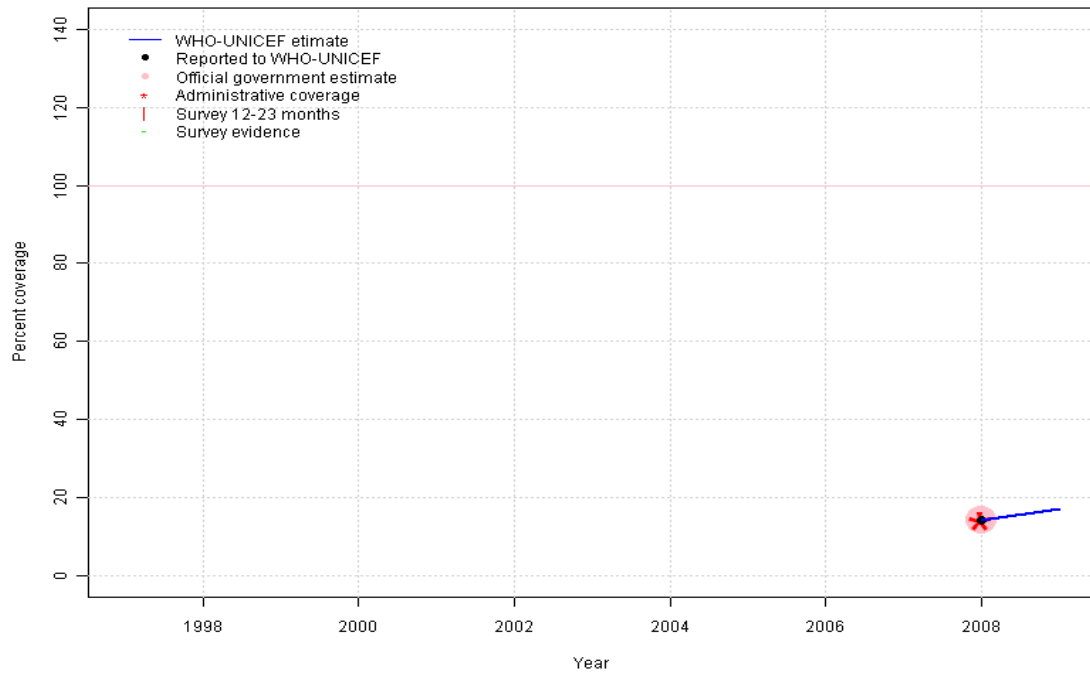
2008: Partial introduction, 100 percent coverage achieved in 47 percent of the country. Rota introduced in 2007 reporting started in 2008, Estimated number of children in target populations varies between antigens and across years. Nationally estimated target is approximately 20 percent lower than that estimated by the UN Population Division.

2009: Rapid increase from to routine levels of other vaccines following introduction.

	1997	1998	1999	2000	2001	2002	2003	2004	2005	2006	2007	2008	2009
Estimate	NA	NA	NA	NA	NA	NA	NA	NA	NA	NA	NA	47	89
Reported	NA	NA	NA	NA	NA	NA	NA	NA	NA	NA	NA	NA	89
Official	NA	NA	NA	NA	NA	NA	NA	NA	NA	NA	NA	NA	89
Administrative	NA	NA	NA	NA	NA	NA	NA	NA	NA	NA	NA	NA	89
Survey	NA	NA	NA	NA	NA	NA	NA	NA	NA	NA	NA	NA	NA

# Mexico - PnV3

MEX - PnV3



## Description:

2008: PCV partially introduced in 2008. Reporting started in 2008. Estimated number of children in target populations varies between antigens and across years. Nationally estimated target is approximately 20 percent lower than that estimated by the UN Population Division.

2009: Partial introduction, 63 percent coverage achieved in 27 percent of the children 1 year of age. PCV partially introduced in 2008.

	1997	1998	1999	2000	2001	2002	2003	2004	2005	2006	2007	2008	2009
Estimate	NA	NA	NA	NA	NA	NA	NA	NA	NA	NA	NA	14	17
Reported	NA	NA	NA	NA	NA	NA	NA	NA	NA	NA	NA	14	NA
Official	NA	NA	NA	NA	NA	NA	NA	NA	NA	NA	NA	14	NA
Administrative	NA	NA	NA	NA	NA	NA	NA	NA	NA	NA	NA	14	NA
Survey	NA	NA	NA	NA	NA	NA	NA	NA	NA	NA	NA	NA	NA

Further information and estimates for 1980-1996 are available at:

[http://www.childinfo.org/immunization\\_countryreports.html](http://www.childinfo.org/immunization_countryreports.html)

[http://www.who.int/immunization\\_monitoring/routine/immunization\\_coverage/en/index4.html](http://www.who.int/immunization_monitoring/routine/immunization_coverage/en/index4.html)

## Mexico

### WHO/UNICEF Estimates of Protection at Birth (PAB) against tetanus

In countries where tetanus is recommended for girls and women coverage is usually reported as "TT2+", i.e. the proportion of (pregnant) women who have received their second or superior TT dose in a given year. TT2 + coverage, however, can under-represent the actual proportion of births that are protected against tetanus as it does not include women who have previously received protective doses, women who received one dose without documentation of previous doses, and women who received doses in TT (or Td) supplemental immunization activities (SIA). In addition, girls who have received DTP in their childhood and are entering childbearing age, may be protected with TT booster doses.

WHO and UNICEF have developed a model that takes into account the above scenarios, and calculates the proportion of births in a given year that can be considered as having been protected against tetanus - "Protection at Birth".

In this model, annual cohorts of women are followed from infancy through their life. A proportion receive DTP in infancy (estimated based on the WHO-UNICEF estimates of DTP3 coverage). In addition some of these women also receive TT through routine services when they are pregnant and may also receive TT during SIAs. The model also adjusts reported data, taking into account coverage patterns in other years, and/or results available through surveys. The duration of protection is then calculated, based on WHO estimates of the duration of protection by doses ever received. The proportion of births that are protected against tetanus as a result of maternal immunization reflects the tetanus immunization received by the mother throughout her life rather than simply the TT immunizations received during the current pregnancy.

Year	PAB coverage estimate (%)
1997	75
1998	77
1999	79
2000	81
2001	83
2002	85
2003	88
2004	85
2005	86
2006	87
2007	87
2008	87
2009	87

---

<sup>1</sup> This model is described in: Griffiths U., Wolfson L., Quddus A., Younus M., Hafiz R.. Incremental cost-effectiveness of supplementary immunization activities to prevent neo-natal tetanus in Pakistan. Bulletin of the World Health Organization 2004; 82:643-651.