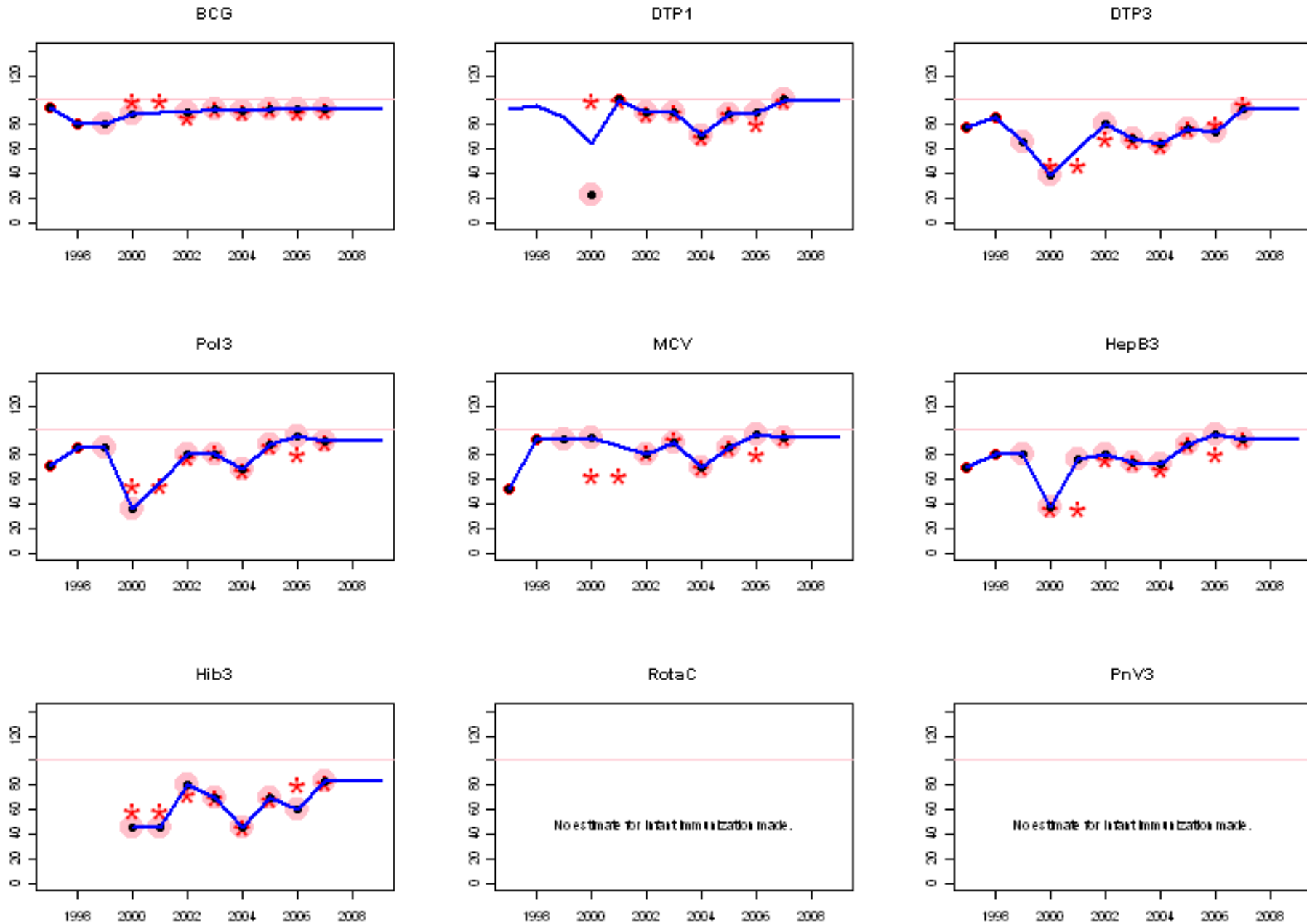
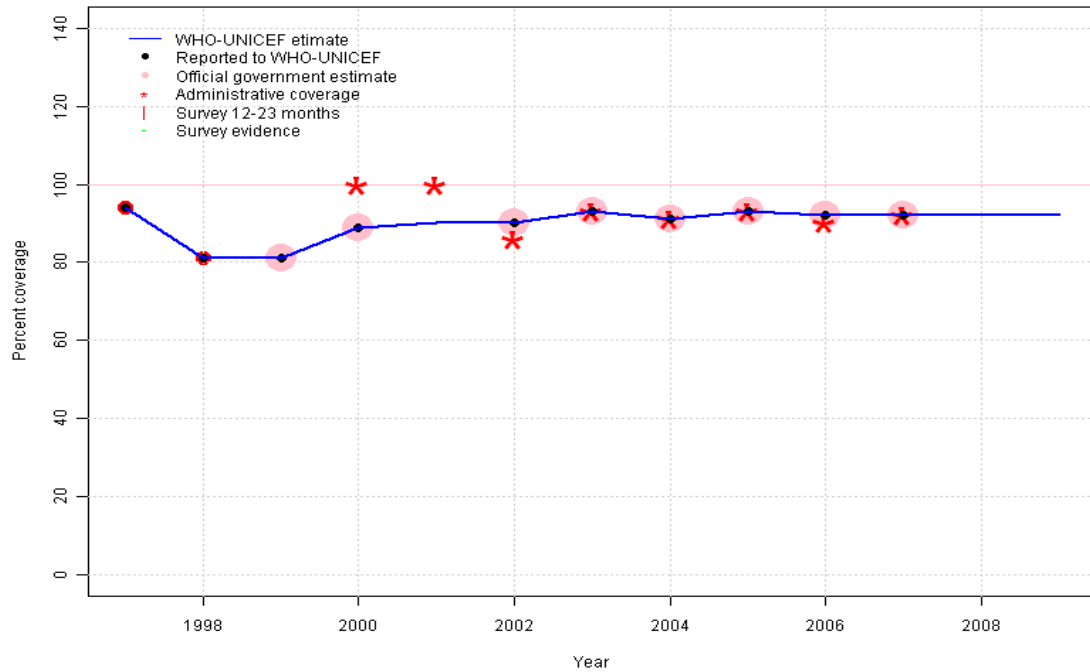


Marshall Islands: WHO and UNICEF estimates of immunization coverage, 1997 - 2009



Marshall Islands - BCG

MHL - BCG



Description:

1997: Legacy estimate.

1998: Estimate based on reported data.

1999: Estimate based on reported data.

2000: Estimate based on reported data.

2001: Estimate based on trend in reported data. Missing or ignored reported value estimated by interpolation between reported values of 89 percent in 2000 and 90 percent in 2002.

2002: Estimate based on reported data.

2003: Estimate based on reported data.

2004: Estimate based on reported data.

2005: Estimate based on reported data.

2006: Estimate based on reported data.

2007: Estimate based on reported data.

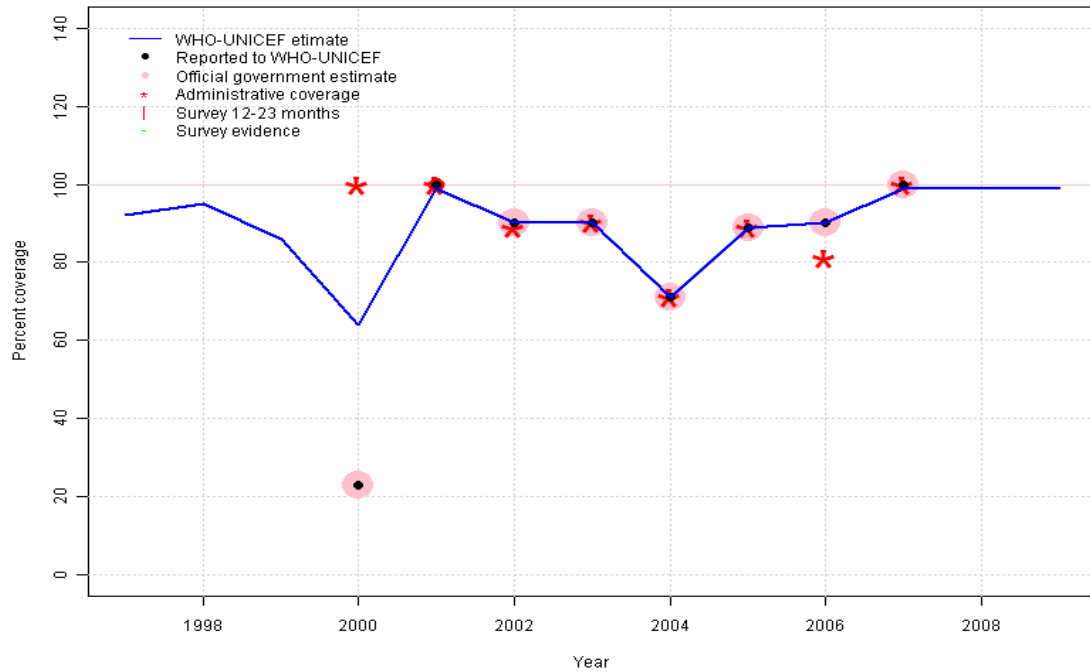
2008: Estimate based on trend in reported data. Missing or ignored reported value estimated by extrapolation from 2007 reported value of 92 percent.

2009: Estimate based on trend in reported data. Missing or ignored reported value estimated by extrapolation from 2007 reported value of 92 percent.

	1997	1998	1999	2000	2001	2002	2003	2004	2005	2006	2007	2008	2009
Estimate	94	81	81	89	90	90	93	91	93	92	92	92	92
Reported	94	81	81	89	NA	90	93	91	93	92	92	NA	NA
Official	NA	NA	81	89	NA	90	93	91	93	92	92	NA	NA
Administrative	NA	NA	NA	100	100	86	93	91	93	90	92	NA	NA
Survey	NA	NA	NA	NA	NA	NA	NA	NA	NA	NA	NA	NA	NA

Marshall Islands - DTP1

MHL - DTP1



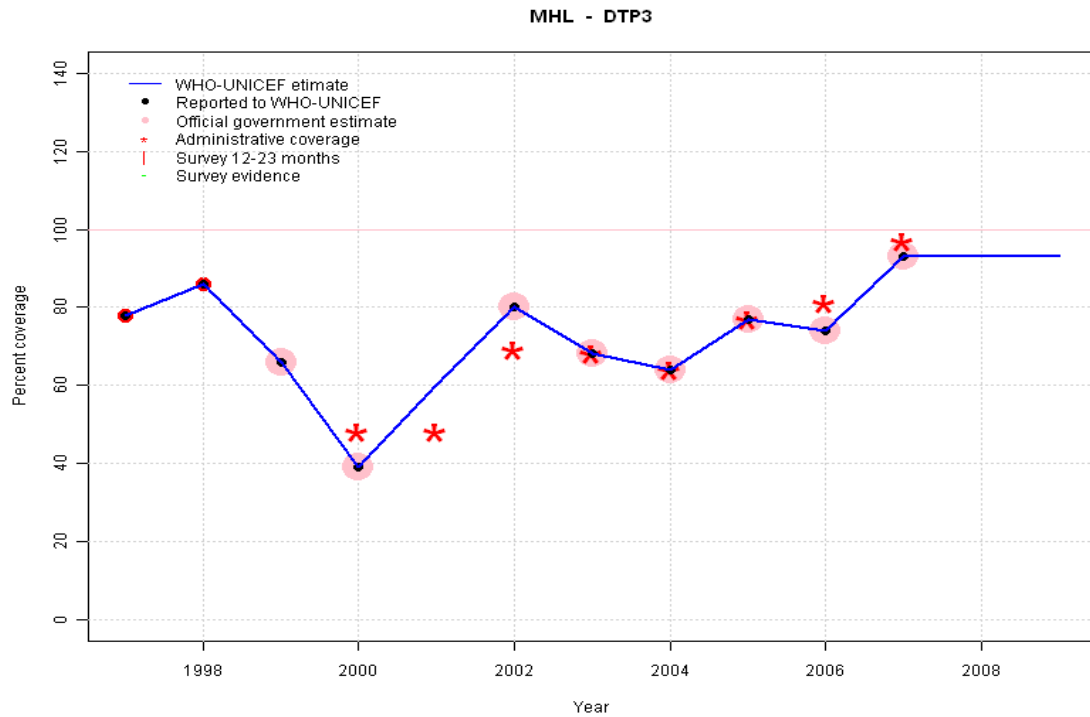
Description:

- 1997: Legacy estimate.
- 1998: Estimated DTP3 greater than estimated DTP1; DTP1 estimate based on the relationship between DTP1 and DTP3 from 282 surveys.
- 1999: Estimated DTP3 greater than estimated DTP1; DTP1 estimate based on the relationship between DTP1 and DTP3 from 282 surveys.
- 2000: Estimated DTP3 greater than estimated DTP1; DTP1 estimate based on the relationship between DTP1 and DTP3 from 282 surveys.
- 2001: Estimate based on reported data.
- 2002: Estimate based on reported data.
- 2003: Estimate based on reported data.
- 2004: Estimate based on reported data.
- 2005: Estimate based on reported data.
- 2006: Estimate based on reported data.
- 2007: Estimate based on reported data.
- 2008: Estimate based on trend in reported data. Missing or ignored reported value estimated by extrapolation from 2007 reported value of 99 percent.
- 2009: Estimate based on trend in reported data. Missing or ignored reported value estimated by extrapolation from 2007 reported value of 99 percent.

	1997	1998	1999	2000	2001	2002	2003	2004	2005	2006	2007	2008	2009
Estimate	92	95	86	64	99	90	90	71	89	90	99	99	99
Reported	NA	NA	NA	23	100	90	90	71	89	90	100	NA	NA
Official	NA	NA	NA	23	NA	90	90	71	89	90	100	NA	NA
Administrative	NA	NA	NA	100	100	89	90	71	89	81	100	NA	NA
Survey	NA	NA	NA	NA	NA	NA	NA	NA	NA	NA	NA	NA	NA

Marshall Islands - DTP3

Description:



1997: Legacy estimate.

1998: Estimate based on reported data.

1999: Estimate based on reported data.

2000: Estimate based on reported data.

2001: Estimate based on trend in reported data. Missing or ignored reported value estimated by interpolation between reported values of 39 percent in 2000 and 80 percent in 2002.

2002: Estimate based on reported data.

2003: Estimate based on reported data.

2004: Estimate based on reported data.

2005: Estimate based on reported data.

2006: Estimate based on reported data.

2007: Estimate based on reported data.

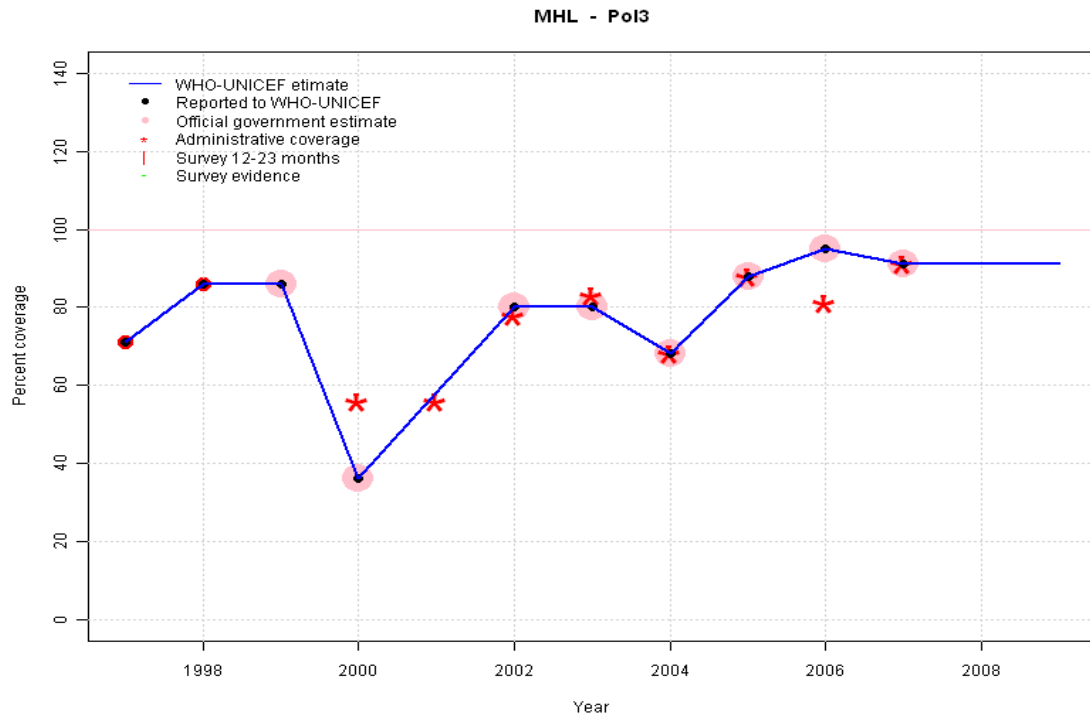
2008: Estimate based on trend in reported data. Missing or ignored reported value estimated by extrapolation from 2007 reported value of 93 percent.

2009: Estimate based on trend in reported data. Missing or ignored reported value estimated by extrapolation from 2007 reported value of 93 percent.

	1997	1998	1999	2000	2001	2002	2003	2004	2005	2006	2007	2008	2009
Estimate	78	86	66	39	60	80	68	64	77	74	93	93	93
Reported	78	86	66	39	NA	80	68	64	77	74	93	NA	NA
Official	NA	NA	66	39	NA	80	68	64	77	74	93	NA	NA
Administrative	NA	NA	NA	48	48	69	68	64	77	81	97	NA	NA
Survey	NA	NA	NA	NA	NA	NA	NA	NA	NA	NA	NA	NA	NA

Marshall Islands - Pol3

Description:

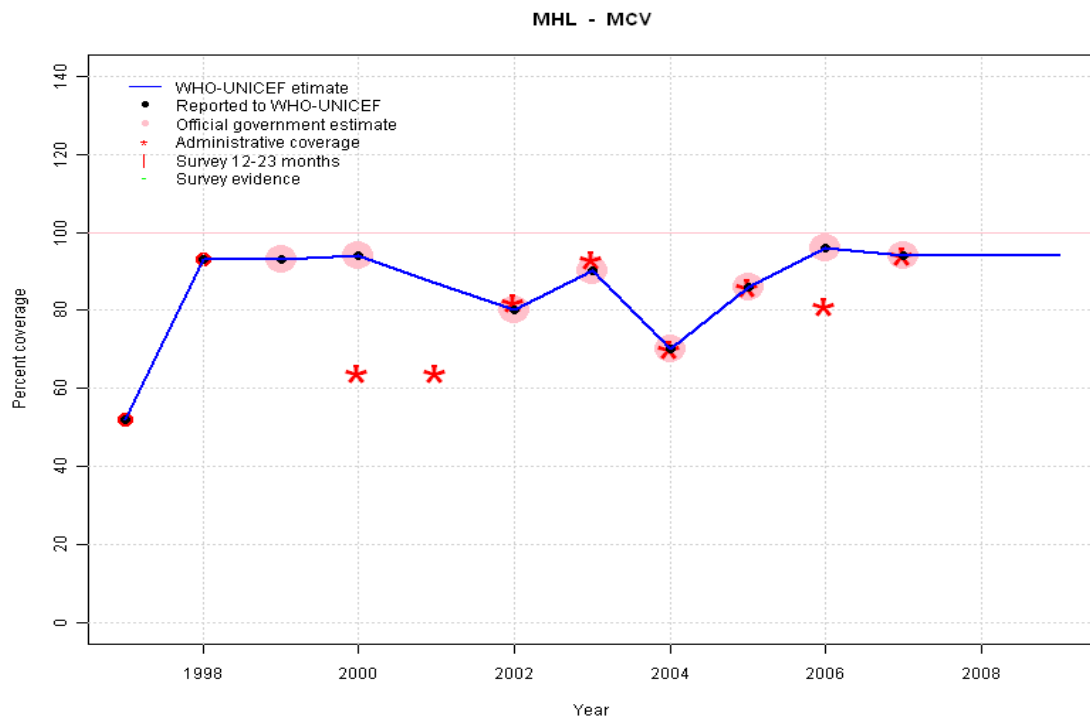


- 1997: Legacy estimate.
- 1998: Estimate based on reported data.
- 1999: Estimate based on reported data.
- 2000: Estimate based on reported data.
- 2001: Estimate based on trend in reported data. Missing or ignored reported value estimated by interpolation between reported values of 36 percent in 2000 and 80 percent in 2002.
- 2002: Estimate based on reported data.
- 2003: Estimate based on reported data.
- 2004: Estimate based on reported data.
- 2005: Estimate based on reported data.
- 2006: Estimate based on reported data.
- 2007: Estimate based on reported data.
- 2008: Estimate based on trend in reported data. Missing or ignored reported value estimated by extrapolation from 2007 reported value of 91 percent.
- 2009: Estimate based on trend in reported data. Missing or ignored reported value estimated by extrapolation from 2007 reported value of 91 percent.

	1997	1998	1999	2000	2001	2002	2003	2004	2005	2006	2007	2008	2009
Estimate	71	86	86	36	58	80	80	68	88	95	91	91	91
Reported	71	86	86	36	NA	80	80	68	88	95	91	NA	NA
Official	NA	NA	86	36	NA	80	80	68	88	95	91	NA	NA
Administrative	NA	NA	NA	56	56	78	83	68	88	81	91	NA	NA
Survey	NA	NA	NA	NA	NA	NA	NA	NA	NA	NA	NA	NA	NA

Marshall Islands - MCV

Description:

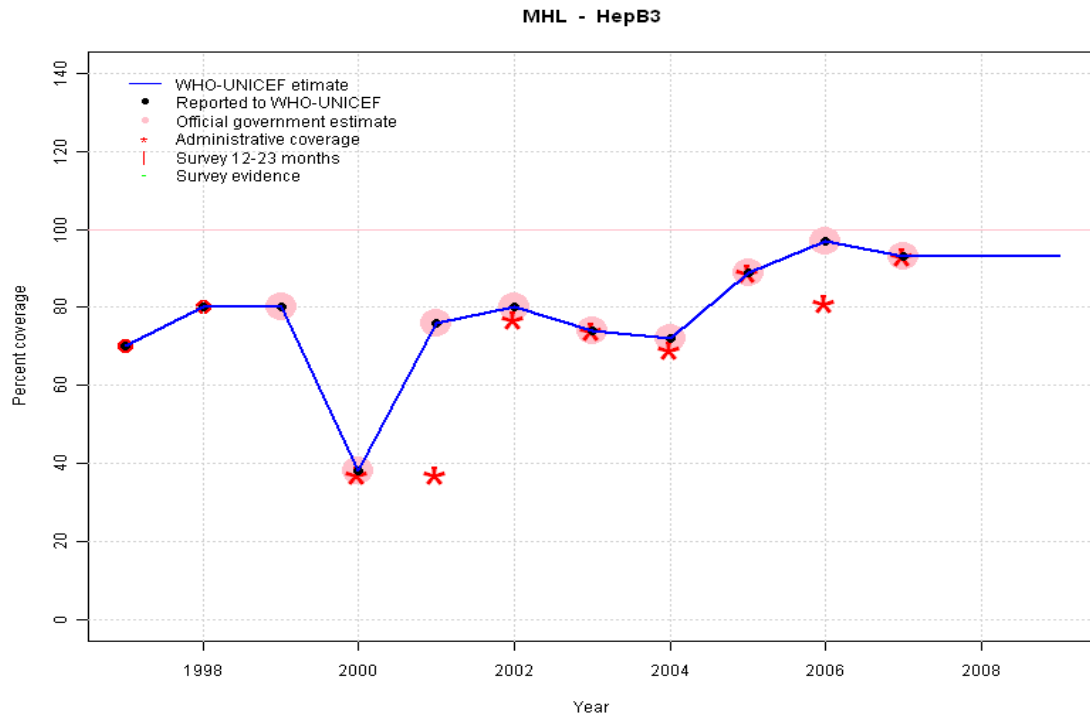


- 1997: Legacy estimate.
- 1998: Estimate based on reported data.
- 1999: Estimate based on reported data.
- 2000: Estimate based on reported data.
- 2001: Estimate based on trend in reported data. Missing or ignored reported value estimated by interpolation between reported values of 94 percent in 2000 and 80 percent in 2002.
- 2002: Estimate based on reported data.
- 2003: Estimate based on reported data.
- 2004: Estimate based on reported data.
- 2005: Estimate based on reported data.
- 2006: Estimate based on reported data.
- 2007: Estimate based on reported data.
- 2008: Estimate based on trend in reported data. Missing or ignored reported value estimated by extrapolation from 2007 reported value of 94 percent.
- 2009: Estimate based on trend in reported data. Missing or ignored reported value estimated by extrapolation from 2007 reported value of 94 percent.

	1997	1998	1999	2000	2001	2002	2003	2004	2005	2006	2007	2008	2009
Estimate	52	93	93	94	87	80	90	70	86	96	94	94	94
Reported	52	93	93	94	NA	80	90	70	86	96	94	NA	NA
Official	NA	NA	93	94	NA	80	90	70	86	96	94	NA	NA
Administrative	NA	NA	NA	64	64	82	93	70	86	81	94	NA	NA
Survey	NA	NA	NA	NA	NA	NA	NA	NA	NA	NA	NA	NA	NA

Marshall Islands - HepB3

Description:

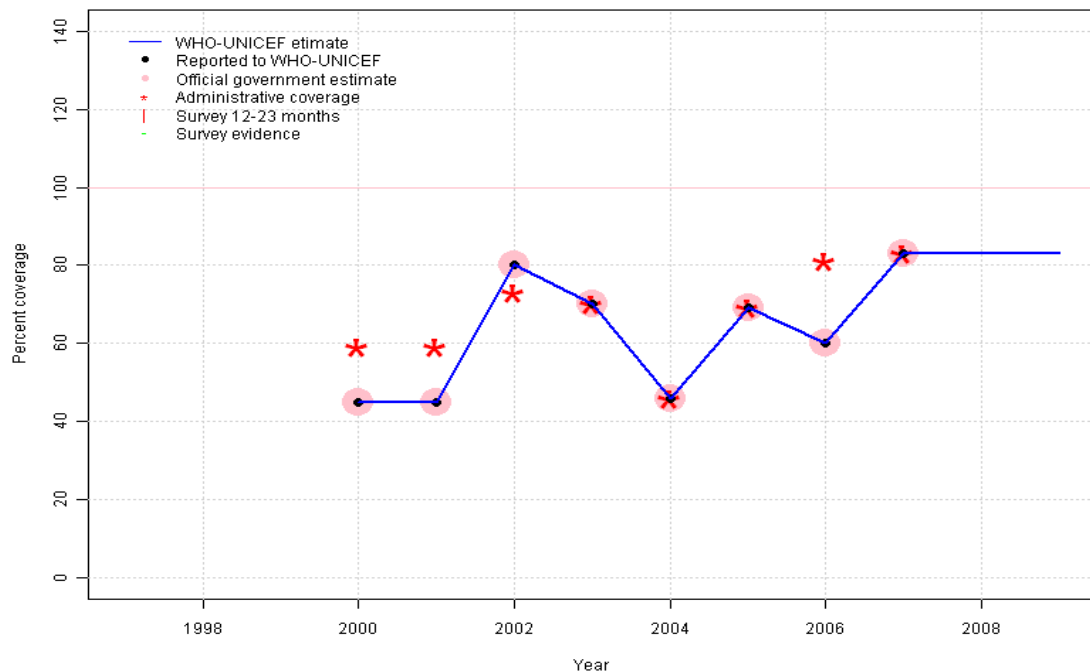


- 1997: Legacy estimate.
- 1998: Estimate based on reported data.
- 1999: Estimate based on reported data.
- 2000: Estimate based on reported data.
- 2001: Estimate based on reported data.
- 2002: Estimate based on reported data.
- 2003: Estimate based on reported data.
- 2004: Estimate based on reported data.
- 2005: Estimate based on reported data.
- 2006: Estimate based on reported data.
- 2007: Estimate based on reported data.
- 2008: Estimate based on trend in reported data. Missing or ignored reported value estimated by extrapolation from 2007 reported value of 93 percent.
- 2009: Estimate based on trend in reported data. Missing or ignored reported value estimated by extrapolation from 2007 reported value of 93 percent.

	1997	1998	1999	2000	2001	2002	2003	2004	2005	2006	2007	2008	2009
Estimate	70	80	80	38	76	80	74	72	89	97	93	93	93
Reported	70	80	80	38	76	80	74	72	89	97	93	NA	NA
Official	NA	NA	80	38	76	80	74	72	89	97	93	NA	NA
Administrative	NA	NA	NA	37	37	77	74	69	89	81	93	NA	NA
Survey	NA	NA	NA	NA	NA	NA	NA	NA	NA	NA	NA	NA	NA

Marshall Islands - Hib3

MHL - Hib3

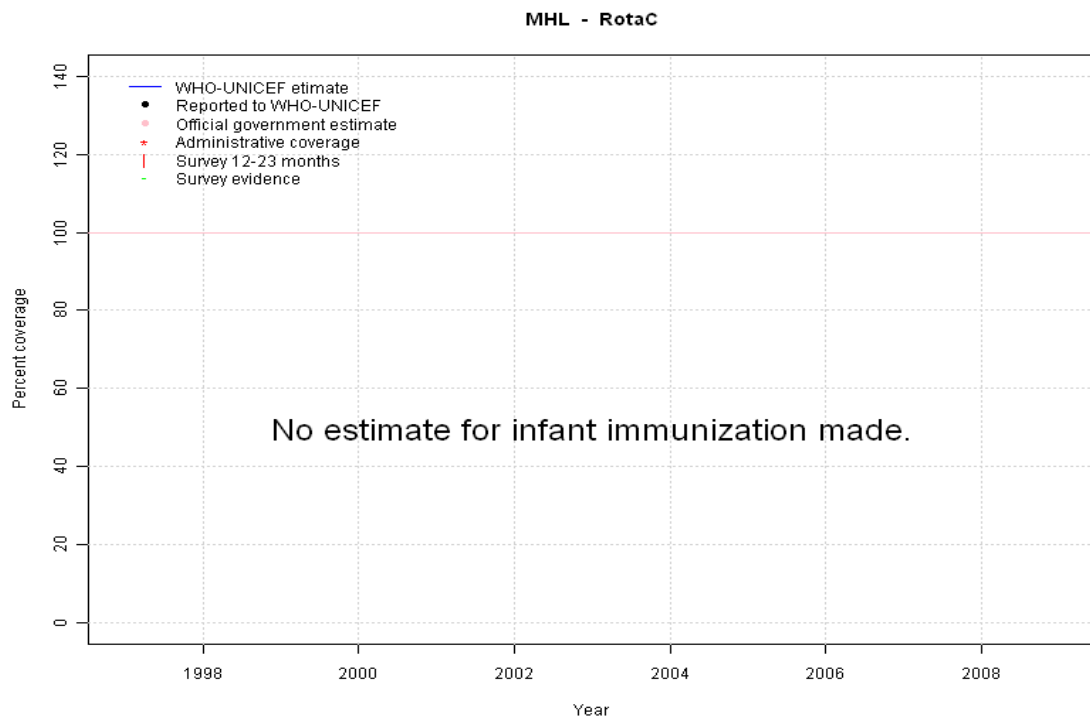


Description:

- 2000: Estimate based on reported data. Hib introduced in 1998. Reporting started in 2000. Vaccine presentation is Hib mono.
- 2001: Estimate based on reported data.
- 2002: Estimate based on reported data.
- 2003: Estimate based on reported data.
- 2004: Estimate based on reported data.
- 2005: Estimate based on reported data.
- 2006: Estimate based on reported data.
- 2007: Estimate based on reported data.
- 2008: Estimate based on reported data. Missing or ignored reported value estimated by extrapolation from 2007 reported value of 83 percent.
- 2009: Estimate based on reported data. Missing or ignored reported value estimated by extrapolation from 2007 reported value of 83 percent.

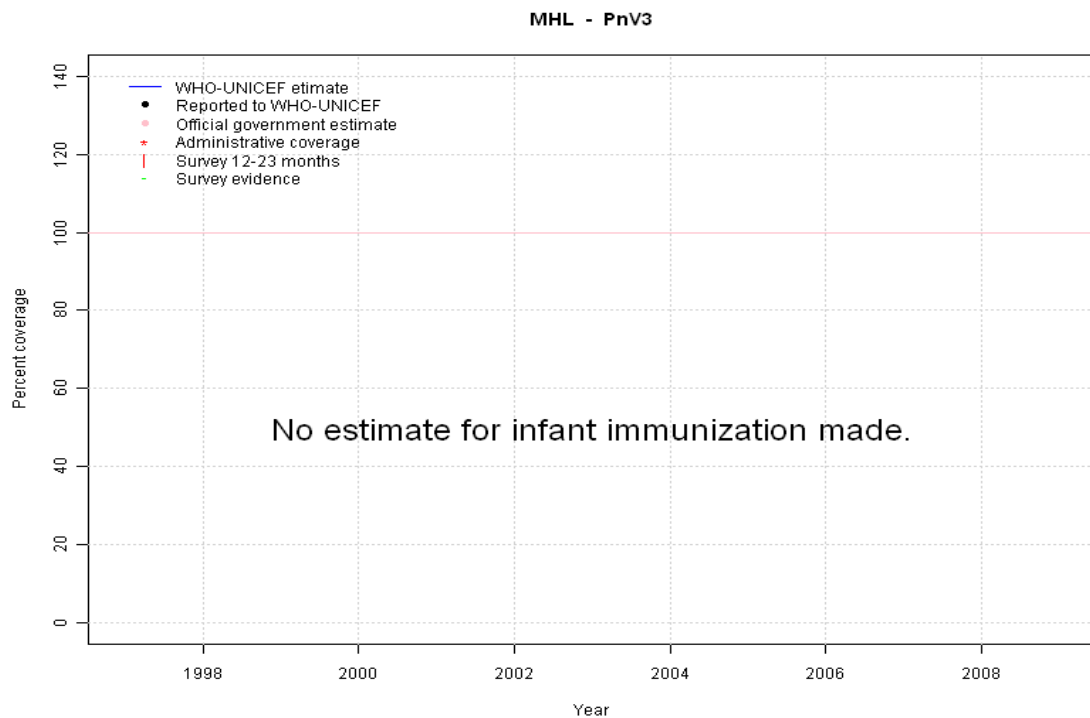
	1997	1998	1999	2000	2001	2002	2003	2004	2005	2006	2007	2008	2009
Estimate	NA	NA	NA	45	45	80	70	46	69	60	83	83	83
Reported	NA	NA	NA	45	45	80	70	46	69	60	83	NA	NA
Official	NA	NA	NA	45	45	80	70	46	69	60	83	NA	NA
Administrative	NA	NA	NA	59	59	73	70	46	69	81	83	NA	NA
Survey	NA	NA	NA	NA	NA	NA	NA	NA	NA	NA	NA	NA	NA

Marshall Islands - RotaC



	1997	1998	1999	2000	2001	2002	2003	2004	2005	2006	2007	2008	2009
Estimate	NA	NA	NA	NA	NA	NA	NA	NA	NA	NA	NA	NA	NA
Reported	NA	NA	NA	NA	NA	NA	NA	NA	NA	NA	NA	NA	NA
Official	NA	NA	NA	NA	NA	NA	NA	NA	NA	NA	NA	NA	NA
Administrative	NA	NA	NA	NA	NA	NA	NA	NA	NA	NA	NA	NA	NA
Survey	NA	NA	NA	NA	NA	NA	NA	NA	NA	NA	NA	NA	NA

Marshall Islands - PnV3



	1997	1998	1999	2000	2001	2002	2003	2004	2005	2006	2007	2008	2009
Estimate	NA	NA	NA	NA	NA	NA	NA	NA	NA	NA	NA	NA	NA
Reported	NA	NA	NA	NA	NA	NA	NA	NA	NA	NA	NA	NA	NA
Official	NA	NA	NA	NA	NA	NA	NA	NA	NA	NA	NA	NA	NA
Administrative	NA	NA	NA	NA	NA	NA	NA	NA	NA	NA	NA	NA	NA
Survey	NA	NA	NA	NA	NA	NA	NA	NA	NA	NA	NA	NA	NA

Marshall Islands - survey details

1999 Marshall Islands Immunization Survey 2001

Vaccine	Confirmation method	Coverage	Age cohort	Sample	Cards seen
BCG	Card	77	12-23 m	0	0

DTP3	Card	82	12-23 m	0	0
HepB3	Card	67	12-23 m	0	0
MCV	Card	80	12-23 m	0	0
Pol3	Card	80	12-23 m	0	0

Further information and estimates for 1980-1996 are available at:

http://www.childinfo.org/immunization_countryreports.html

http://www.who.int/immunization_monitoring/routine/immunization_coverage/en/index4.html