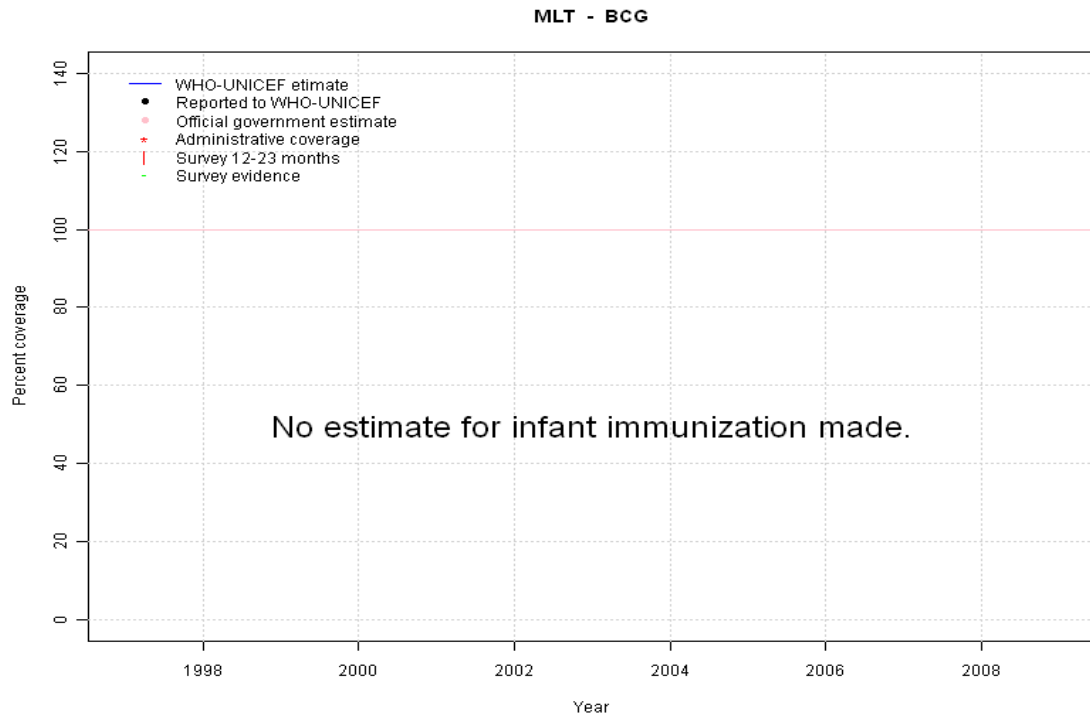
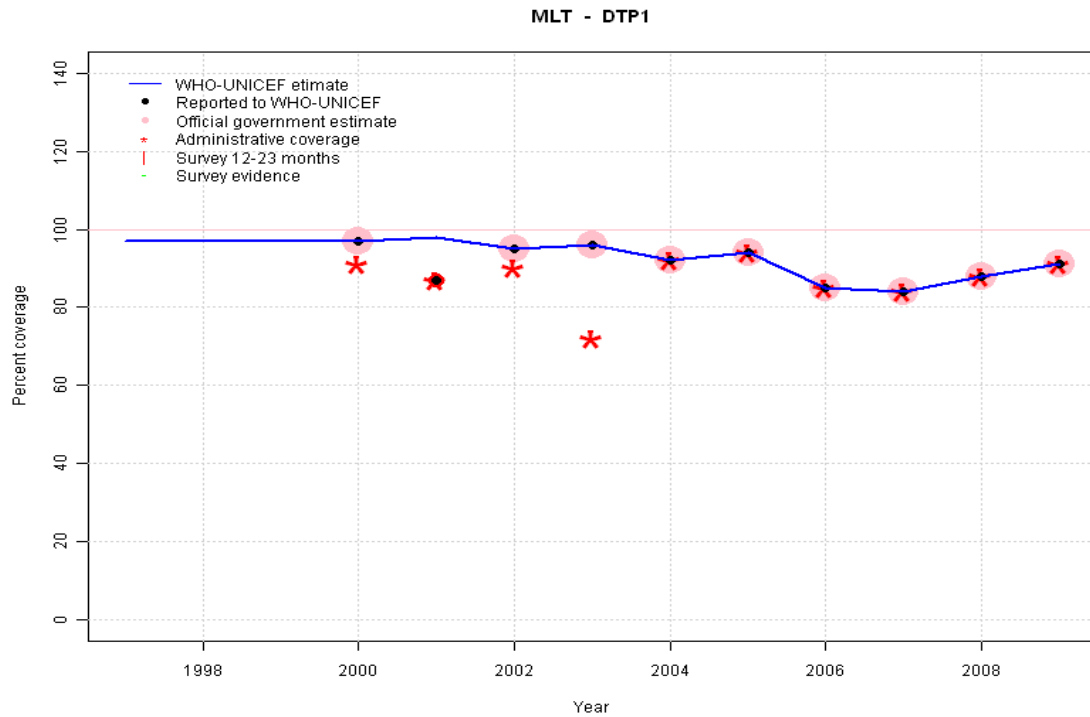


Malta - BCG



	1997	1998	1999	2000	2001	2002	2003	2004	2005	2006	2007	2008	2009
Estimate	NA	NA	NA	NA	NA	NA	NA	NA	NA	NA	NA	NA	NA
Reported	NA	NA	NA	NA	NA	NA	NA	NA	NA	NA	NA	NA	NA
Official	NA	NA	NA	NA	NA	NA	NA	NA	NA	NA	NA	NA	NA
Administrative	NA	NA	NA	NA	NA	NA	NA	NA	NA	NA	NA	NA	NA
Survey	NA	NA	NA	NA	NA	NA	NA	NA	NA	NA	NA	NA	NA

Malta - DTP1



Description:

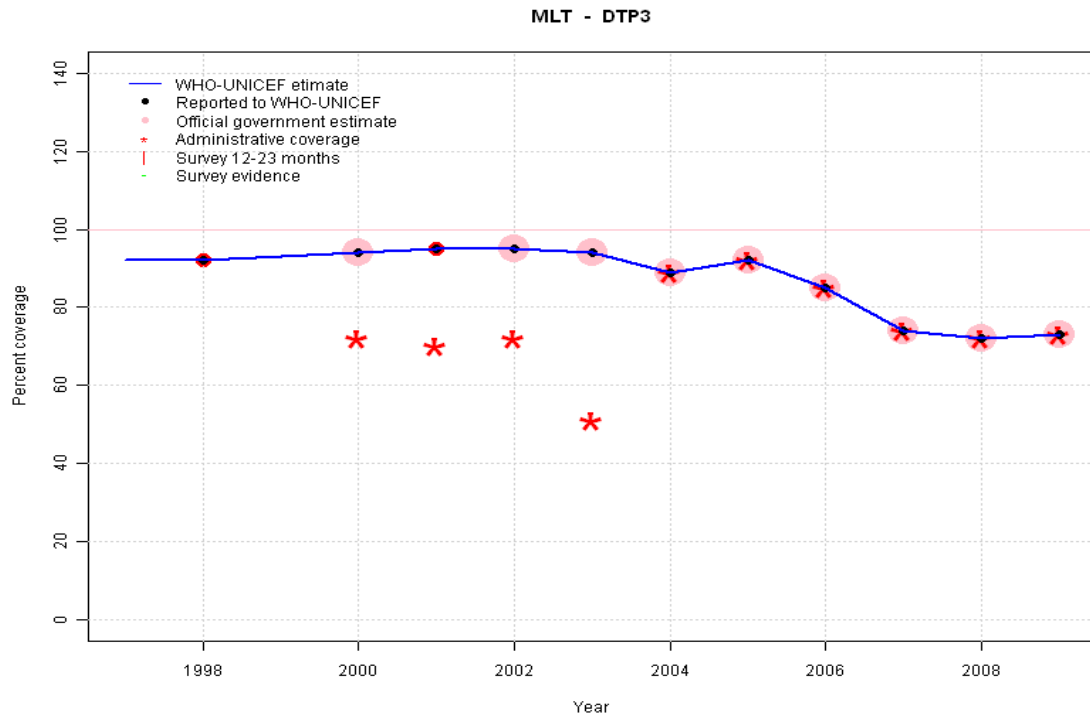
- 1997: Legacy estimate.
- 1998: Estimate based on trend in reported data. Missing or ignored reported value estimated by extrapolation from 2000 reported value of 97 percent.
- 1999: Estimate based on trend in reported data. Missing or ignored reported value estimated by extrapolation from 2000 reported value of 97 percent.
- 2000: Estimate based on reported data.
- 2001: Estimated DTP3 greater than estimated DTP1; DTP1 estimate based on the relationship between DTP1 and DTP3 from 282 surveys.
- 2002: Estimate based on reported data.
- 2003: Estimate based on reported data.
- 2004: Estimate based on reported data.
- 2005: Estimate based on reported data.
- 2006: Estimate based on reported data.
- 2007: Estimate based on reported data.
- 2008: Estimate based on reported data.
- 2009: Estimate based on reported data.

	1997	1998	1999	2000	2001	2002	2003	2004	2005	2006	2007	2008	2009
Estimate	97	97	97	97	98	95	96	92	94	85	84	88	91
Reported	NA	NA	NA	97	87	95	96	92	94	85	84	88	91
Official	NA	NA	NA	97	NA	95	96	92	94	85	84	88	91
Administrative	NA	NA	NA	91	87	90	72	92	94	85	84	88	91
Survey	NA	NA	NA	NA	NA	NA	NA	NA	NA	NA	NA	NA	NA

Malta - DTP3

Description:

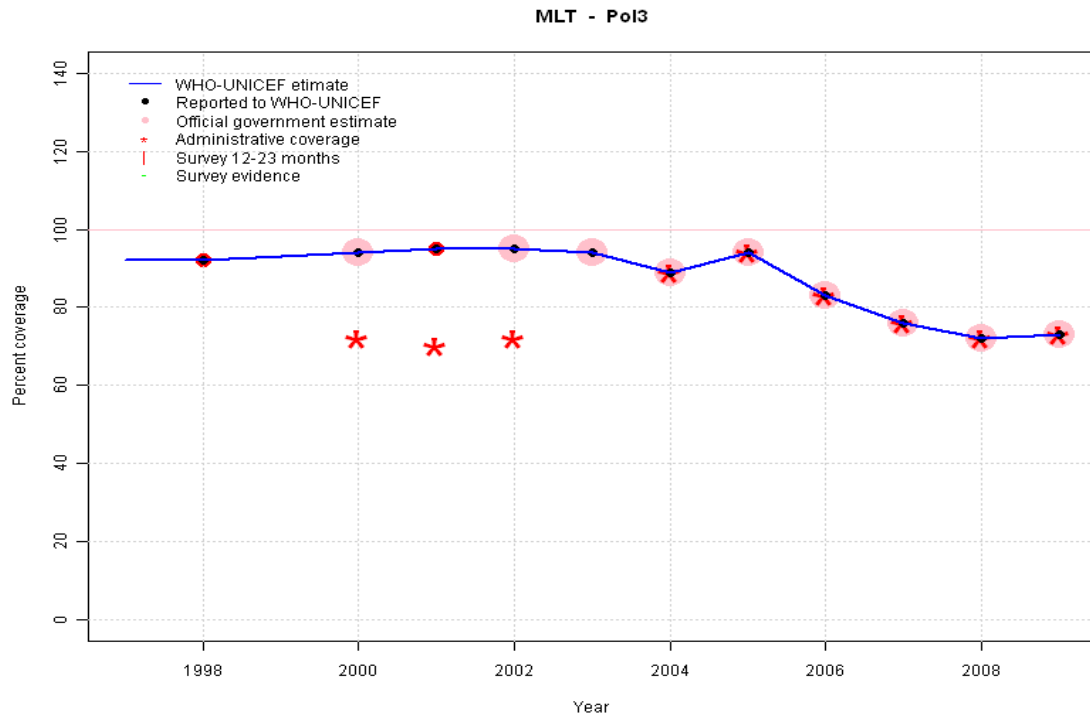
- 1997: Legacy estimate.
- 1998: Estimate based on reported data.
- 1999: Estimate based on trend in reported data. Missing or ignored reported value estimated by interpolation between reported values of 92 percent in 1998 and 94 percent in 2000.
- 2000: Estimate based on reported data.
- 2001: Estimate based on reported data.
- 2002: Estimate based on reported data.
- 2003: Estimate based on reported data.
- 2004: Estimate based on reported data.
- 2005: Estimate based on reported data.
- 2006: Estimate based on reported data.
- 2007: Estimate based on reported data.
- 2008: Estimate based on reported data.
- 2009: Estimate based on reported data.



	1997	1998	1999	2000	2001	2002	2003	2004	2005	2006	2007	2008	2009
Estimate	92	92	93	94	95	95	94	89	92	85	74	72	73
Reported	NA	92	NA	94	95	95	94	89	92	85	74	72	73
Official	NA	NA	NA	94	NA	95	94	89	92	85	74	72	73
Administrative	NA	NA	NA	72	70	72	51	89	92	85	74	72	73
Survey	NA	NA	NA	NA	NA	NA	NA	NA	NA	NA	NA	NA	NA

Malta - Pol3

Description:

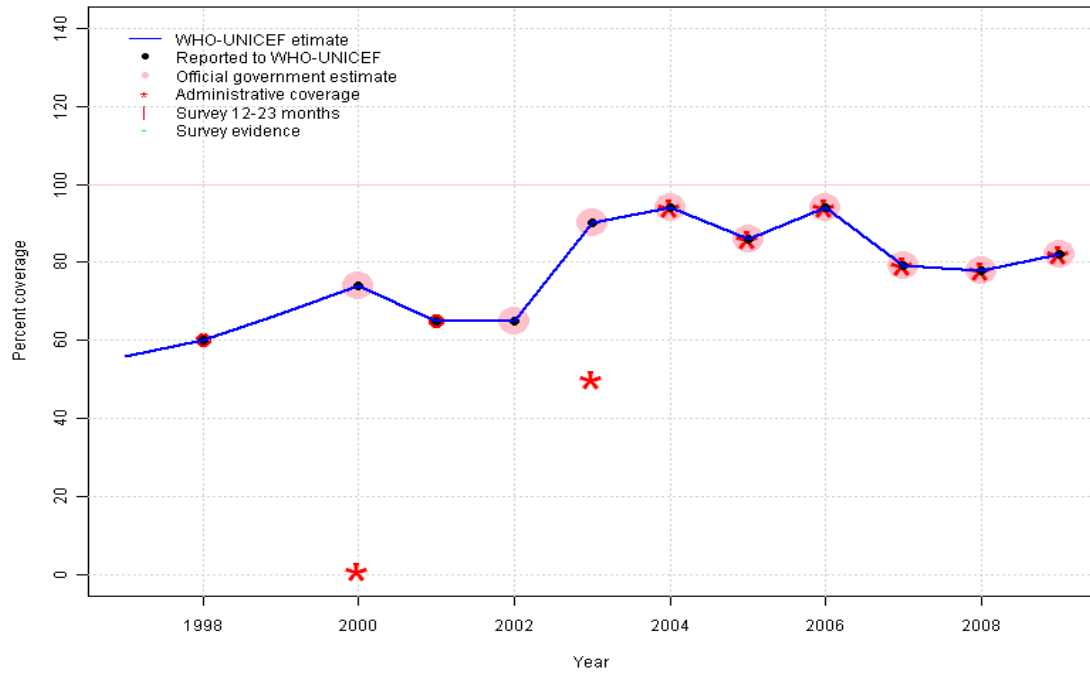


1997: Legacy estimate.
 1998: Estimate based on reported data.
 1999: Estimate based on trend in reported data. Missing or ignored reported value estimated by interpolation between reported values of 92 percent in 1998 and 94 percent in 2000.
 2000: Estimate based on reported data.
 2001: Estimate based on reported data.
 2002: Estimate based on reported data.
 2003: Estimate based on reported data.
 2004: Estimate based on reported data.
 2005: Estimate based on reported data.
 2006: Estimate based on reported data.
 2007: Estimate based on reported data.
 2008: Estimate based on reported data.
 2009: Estimate based on reported data.

	1997	1998	1999	2000	2001	2002	2003	2004	2005	2006	2007	2008	2009
Estimate	92	92	93	94	95	95	94	89	94	83	76	72	73
Reported	NA	92	NA	94	95	95	94	89	94	83	76	72	73
Official	NA	NA	NA	94	NA	95	94	89	94	83	76	72	73
Administrative	NA	NA	NA	72	70	72	NA	89	94	83	76	72	73
Survey	NA	NA	NA	NA	NA	NA	NA	NA	NA	NA	NA	NA	NA

Malta - MCV

MLT - MCV



Description:

1997: Legacy estimate.

1998: Estimate based on reported data.

1999: Estimate based on trend in reported data. Missing or ignored reported value estimated by interpolation between reported values of 60 percent in 1998 and 74 percent in 2000.

2000: Estimate based on reported data.

2001: Estimate based on reported data.

2002: Estimate based on reported data.

2003: Estimate based on reported data.

2004: Estimate based on reported data.

2005: Estimate based on reported data.

2006: Estimate based on reported data.

2007: Estimate based on reported data.

2008: Estimate based on reported data.

2009: Estimate based on reported data.

	1997	1998	1999	2000	2001	2002	2003	2004	2005	2006	2007	2008	2009
Estimate	56	60	67	74	65	65	90	94	86	94	79	78	82
Reported	NA	60	NA	74	65	65	90	94	86	94	79	78	82
Official	NA	NA	NA	74	NA	65	90	94	86	94	79	78	82
Administrative	NA	NA	NA	1	NA	NA	50	94	86	94	79	78	82
Survey	NA	NA	NA	NA	NA	NA	NA	NA	NA	NA	NA	NA	NA

Malta - HepB3

Description:

2003: Estimate based on reported data. HepB was administered to school children aged 10-11 years from 1997 to 2003. In 2003, the vaccination age was brought down to 15 months. Vaccine presentation is HepB .

2004: Estimate based on reported data.

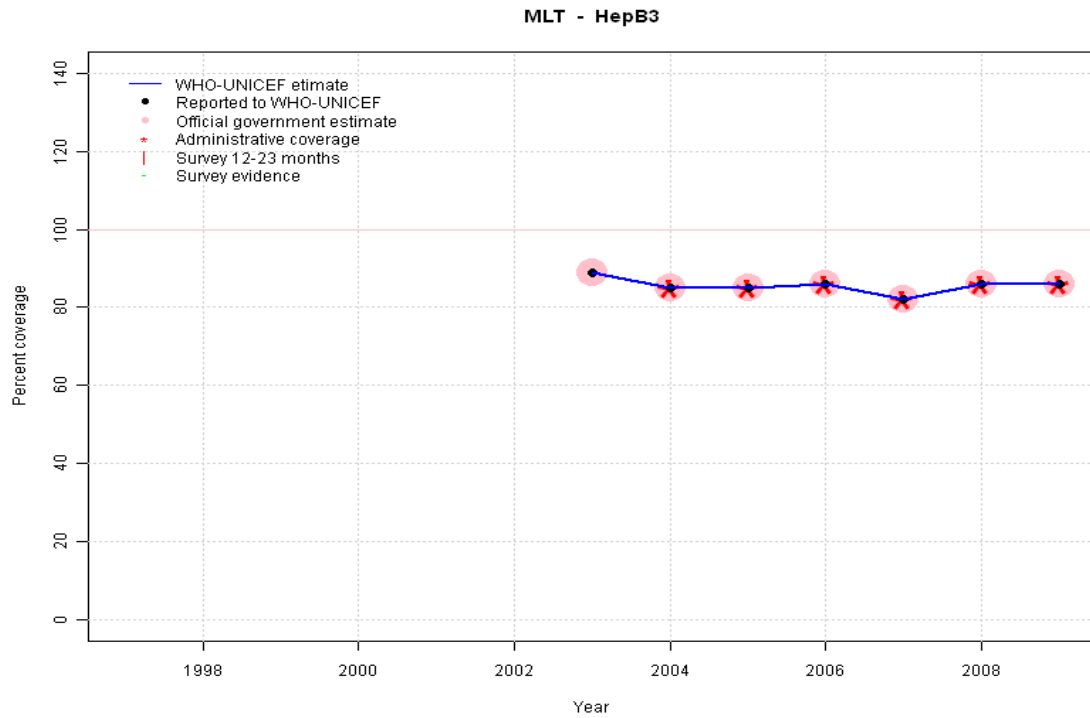
2005: Estimate based on reported data.

2006: Estimate based on reported data.

2007: Estimate based on reported data.

2008: Estimate based on reported data.

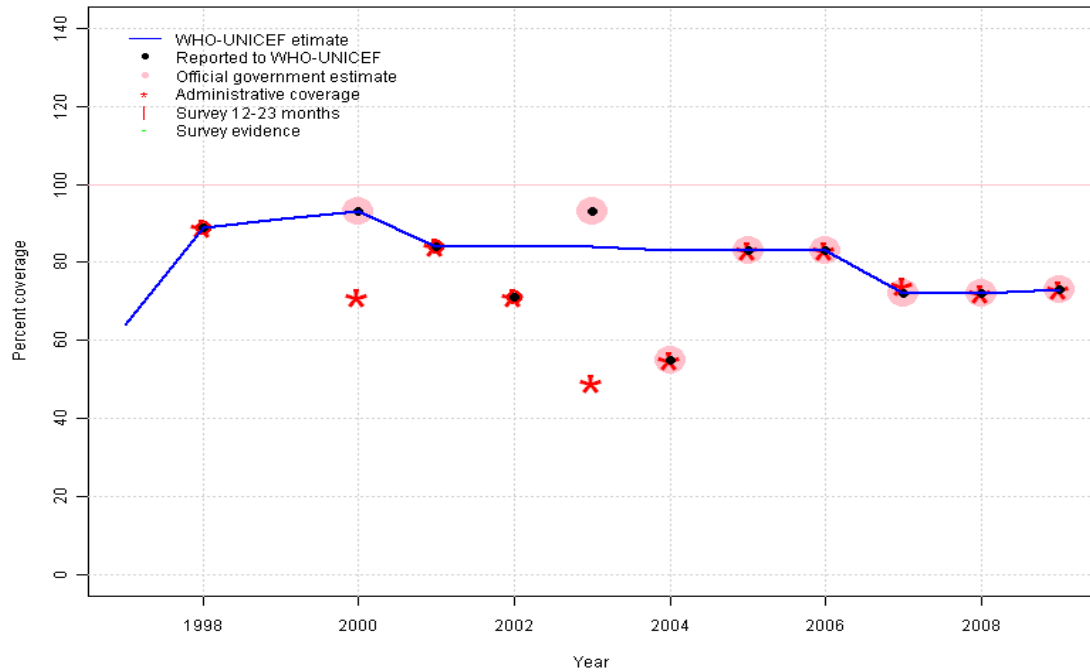
2009: Estimate based on reported data.



	1997	1998	1999	2000	2001	2002	2003	2004	2005	2006	2007	2008	2009
Estimate	NA	NA	NA	NA	NA	NA	89	85	85	86	82	86	86
Reported	NA	NA	NA	NA	NA	NA	89	85	85	86	82	86	86
Official	NA	NA	NA	NA	NA	NA	89	85	85	86	82	86	86
Administrative	NA	NA	NA	NA	NA	NA	NA	85	85	86	82	86	86
Survey	NA	NA	NA	NA	NA	NA	NA	NA	NA	NA	NA	NA	NA

Malta - Hib3

MLT - Hib3



	1997	1998	1999	2000	2001	2002	2003	2004	2005	2006	2007	2008	2009
Estimate	64	89	91	93	84	84	84	83	83	83	72	72	73
Reported	NA	89	NA	93	84	71	93	55	83	83	72	72	73
Official	NA	NA	NA	93	NA	NA	93	55	83	83	72	72	73
Administrative	NA	89	NA	71	84	71	49	55	83	83	74	72	73
Survey	NA	NA	NA	NA	NA	NA	NA	NA	NA	NA	NA	NA	NA

Description:

1997: Legacy estimate.

1998: Estimate based on reported data.

1999: Estimate based on trend in reported data. Missing or ignored reported value estimated by interpolation between reported values of 89 percent in 1998 and 93 percent in 2000.

2000: Estimate based on reported data.

2001: Estimate based on reported data.

2002: Estimate based on trend in reported data. Missing or ignored reported value estimated by interpolation between reported values of 84 percent in 2001 and 83 percent in 2005. 2002 reported data (71 percent) inconsistent with data from other years.

2003: Estimate based on trend in reported data. Missing or ignored reported value estimated by interpolation between reported values of 84 percent in 2001 and 83 percent in 2005. 2003 reported data (93 percent) inconsistent with data from other years.

2004: Estimate based on trend in reported data. Missing or ignored reported value estimated by interpolation between reported values of 84 percent in 2001 and 83 percent in 2005. 2004 reported data (55 percent) inconsistent with data from other years.

2005: Estimate based on reported data.

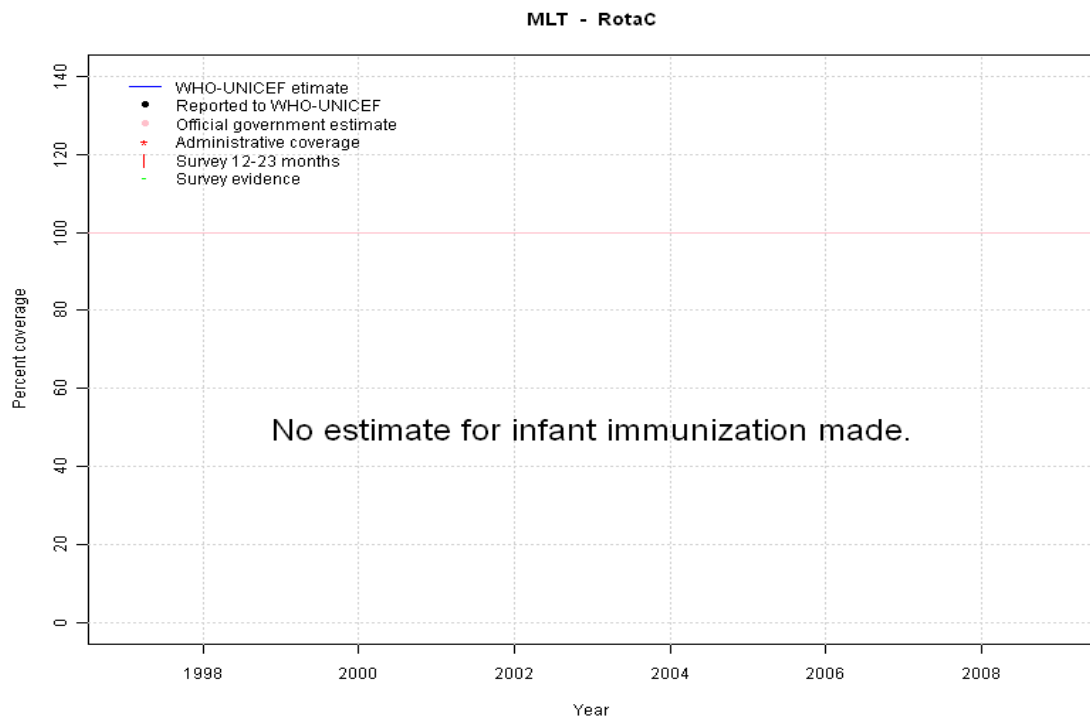
2006: Estimate based on reported data.

2007: Estimate based on reported data.

2008: Estimate based on reported data.

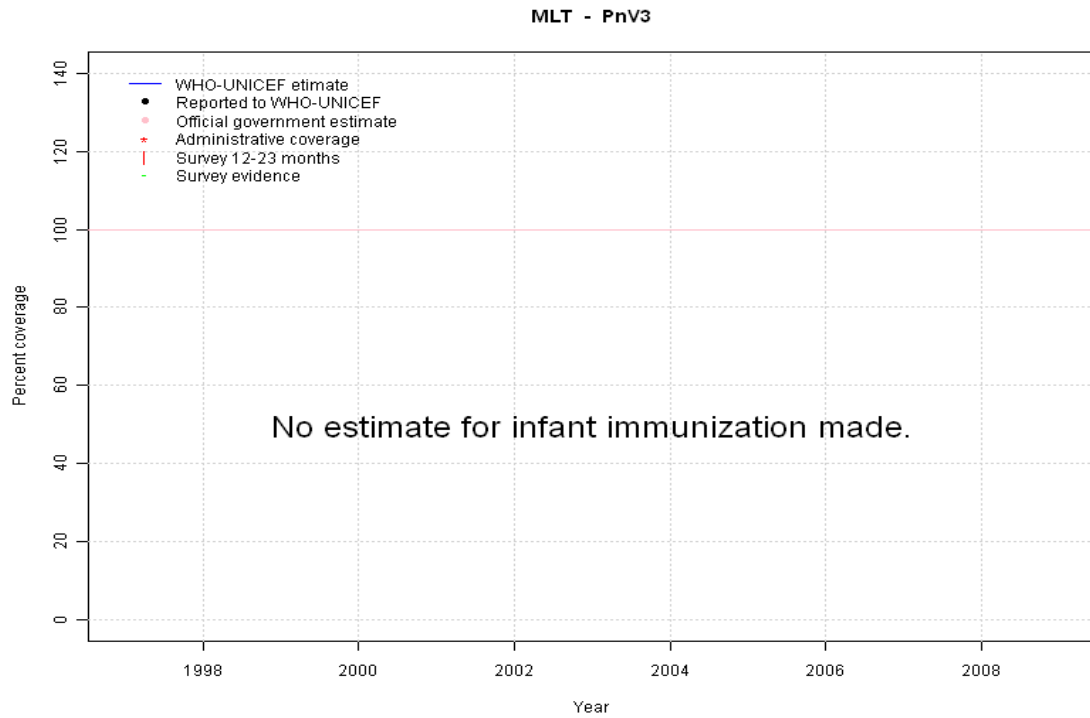
2009: Estimate based on reported data.

Malta - RotaC



	1997	1998	1999	2000	2001	2002	2003	2004	2005	2006	2007	2008	2009
Estimate	NA	NA	NA	NA	NA	NA	NA	NA	NA	NA	NA	NA	NA
Reported	NA	NA	NA	NA	NA	NA	NA	NA	NA	NA	NA	NA	NA
Official	NA	NA	NA	NA	NA	NA	NA	NA	NA	NA	NA	NA	NA
Administrative	NA	NA	NA	NA	NA	NA	NA	NA	NA	NA	NA	NA	NA
Survey	NA	NA	NA	NA	NA	NA	NA	NA	NA	NA	NA	NA	NA

Malta - PnV3



	1997	1998	1999	2000	2001	2002	2003	2004	2005	2006	2007	2008	2009
Estimate	NA	NA	NA	NA	NA	NA	NA	NA	NA	NA	NA	NA	NA
Reported	NA	NA	NA	NA	NA	NA	NA	NA	NA	NA	NA	NA	NA
Official	NA	NA	NA	NA	NA	NA	NA	NA	NA	NA	NA	NA	NA
Administrative	NA	NA	NA	NA	NA	NA	NA	NA	NA	NA	NA	NA	NA
Survey	NA	NA	NA	NA	NA	NA	NA	NA	NA	NA	NA	NA	NA

Further information and estimates for 1980-1996 are available at:

http://www.childinfo.org/immunization_countryreports.html

http://www.who.int/immunization_monitoring/routine/immunization_coverage/en/index4.html