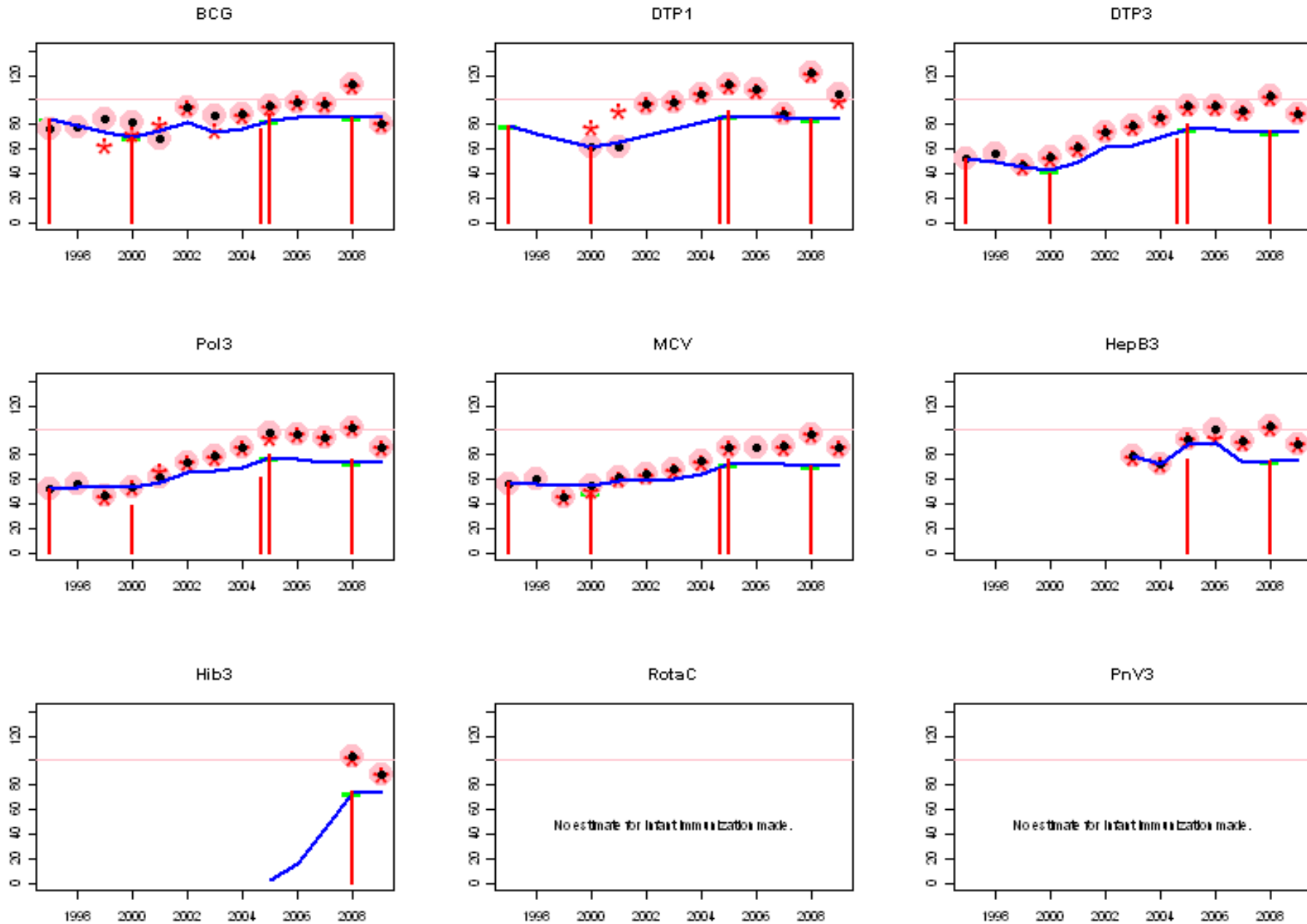
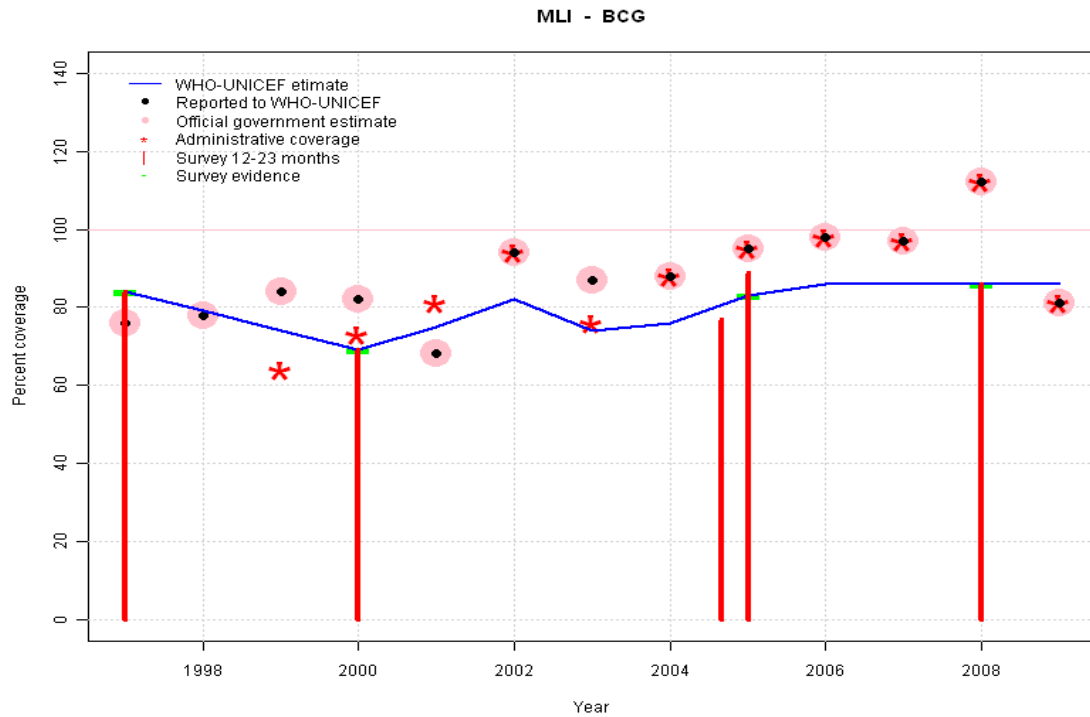


Mali: WHO and UNICEF estimates of immunization coverage, 1997 - 2009



Mali - BCG



	1997	1998	1999	2000	2001	2002	2003	2004	2005	2006	2007	2008	2009
Estimate	84	79	74	69	75	82	74	76	83	86	86	86	86
Reported	76	78	84	82	68	94	87	88	95	98	97	112	81
Official	76	78	84	82	68	94	87	88	95	98	97	112	81
Administrative	NA	NA	64	73	81	94	76	88	95	98	97	112	81
Survey	84	NA	NA	69	NA	NA	NA	NA	83	NA	NA	86	NA

Description:

1997: Legacy estimate.

1998: Estimate interpolated between 1997 and 2000 estimates.

1999: Estimate interpolated between 1997 and 2000 estimates.

2000: Estimate based on survey results. Reported data (82 percent) not consistent with survey results (69 percent).

2001: Reported data (88 percent) calibrated to 2000 and 2005 levels. Missing or ignored reported value estimated by interpolation between reported values of 82 percent in 2000 and 94 percent in 2002. 2001 reported data (68 percent) inconsistent with data from other years.

2002: Reported data (94 percent) calibrated to 2000 and 2005 levels.

2003: Reported data (87 percent) calibrated to 2000 and 2005 levels.

2004: Reported data (88 percent) calibrated to 2000 and 2005 levels.

2005: Estimate based on survey results. Reported data (95 percent) not consistent with survey results (83 percent). 2 surveys, results = 77, 89, mean = 83 percent.

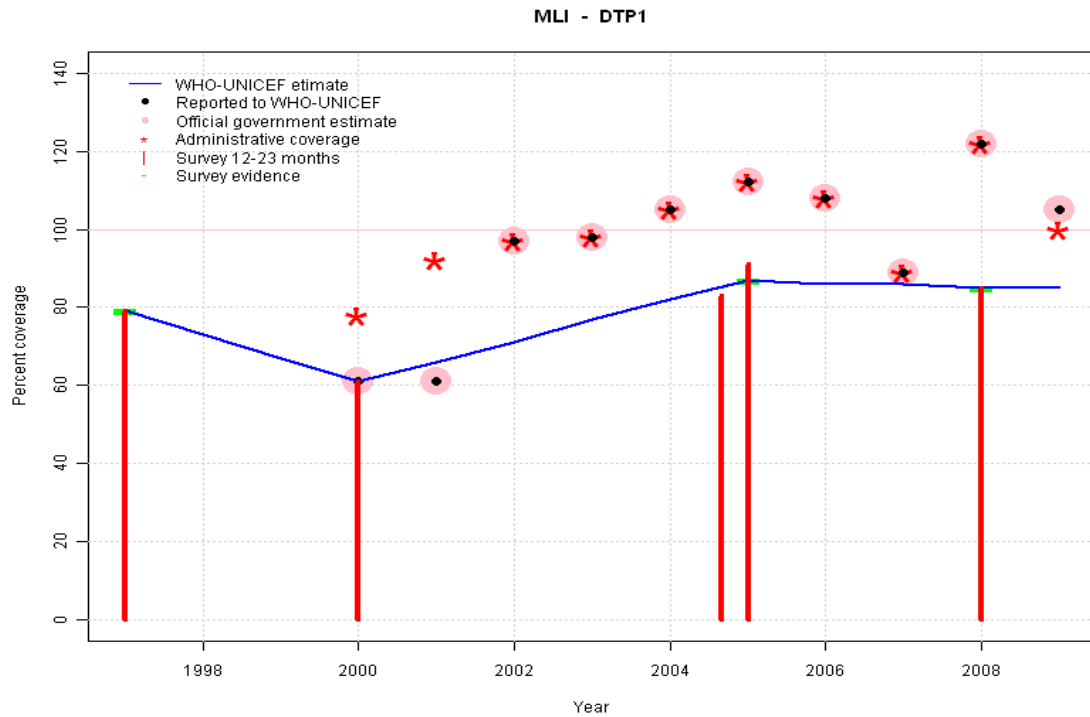
2006: Reported data (98 percent) calibrated to 2005 and 2008 levels.

2007: Reported data (97 percent) calibrated to 2005 and 2008 levels.

2008: Estimate based on survey results. Reported data (97 percent) not consistent with survey results (86 percent). 2008 reported data (112 percent) ignored; greater than 100 percent. 2008 reported data (112 percent) inconsistent with data from other years.

2009: Reported data (97 percent) calibrated to 2008 level (86 percent). 2009 reported data (81 percent) inconsistent with data from other years.

Mali - DTP1



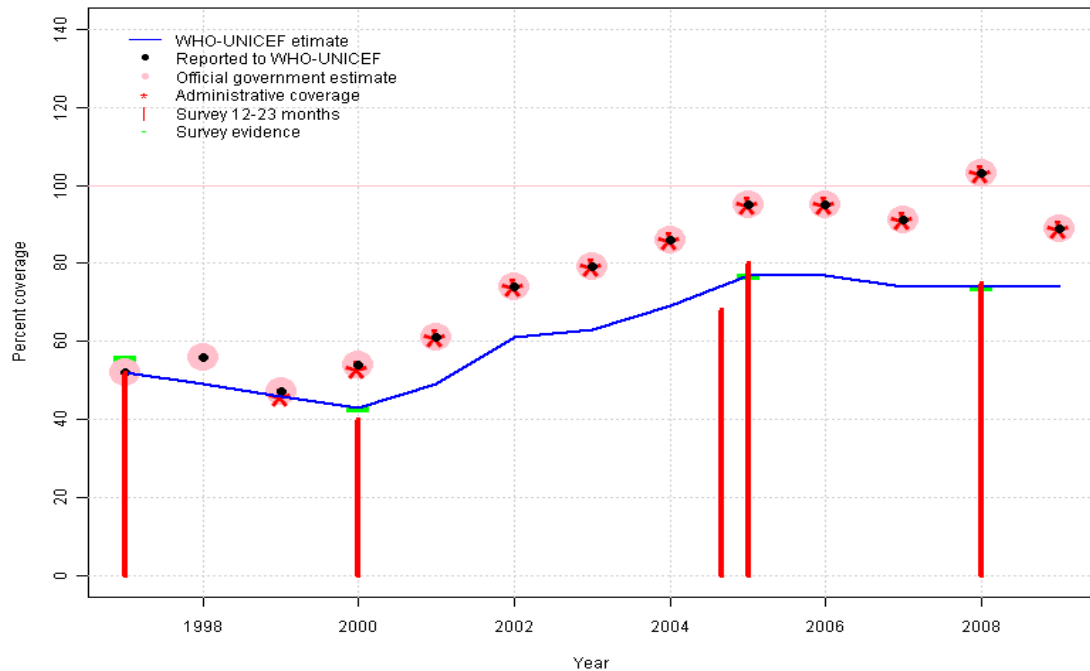
	1997	1998	1999	2000	2001	2002	2003	2004	2005	2006	2007	2008	2009
Estimate	79	73	67	61	66	71	77	82	87	86	86	85	85
Reported	NA	NA	NA	61	61	97	98	105	112	108	89	122	105
Official	NA	NA	NA	61	61	97	98	105	112	108	89	122	105
Administrative	NA	NA	NA	78	92	97	98	105	112	108	89	122	100
Survey	79	NA	NA	61	NA	NA	NA	NA	87	NA	NA	85	NA

Description:

- 1997: Legacy estimate.
- 1998: Estimate interpolated between 1997 and 2000 estimates.
- 1999: Estimate interpolated between 1997 and 2000 estimates.
- 2000: Estimate based on reported data (61 percent) confirmed by survey (61 percent).
- 2001: Estimate based on working group decision to interpolated between 2000 and 2005.
- 2002: Estimate based on working group decision to interpolated between 2000 and 2005.
- 2003: Estimate based on working group decision to interpolated between 2000 and 2005.
- 2004: Estimate based on working group decision to interpolated between 2000 and 2005. 2004 reported data (105 percent) ignored; greater than 100 percent.
- 2005: Estimate based on survey results. Reported data (98 percent) not consistent with survey results (87 percent). 2 surveys, results = 83, 91, mean = 87 percent. 2005 reported data (112 percent) ignored; greater than 100 percent.
- 2006: Estimate interpolated between 2005 and 2008 estimates. 2006 reported data (108 percent) ignored; greater than 100 percent.
- 2007: Estimate interpolated between 2005 and 2008 estimates. 2007 reported data (89 percent) inconsistent with data from other years.
- 2008: Estimate based on survey results. Reported data (98 percent) not consistent with survey results (85 percent). 2008 reported data (122 percent) ignored; greater than 100 percent. 2008 reported data (122 percent) inconsistent with data from other years.
- 2009: Estimate extrapolated from 2008 level (85 percent). 2009 reported data (105 percent) ignored; greater than 100 percent. 2009 reported data (105 percent) inconsistent with data from other years.

Mali - DTP3

MLI - DTP3



	1997	1998	1999	2000	2001	2002	2003	2004	2005	2006	2007	2008	2009
Estimate	52	49	46	43	49	61	63	69	77	77	74	74	74
Reported	52	56	47	54	61	74	79	86	95	95	91	103	89
Official	52	56	47	54	61	74	79	86	95	95	91	103	89
Administrative	NA	NA	46	53	61	74	79	86	95	95	91	103	89
Survey	56	NA	NA	43	NA	NA	NA	NA	77	NA	NA	74	NA

Description:

1997: Legacy estimate. Survey results (52 percent) adjusted for recall bias to 56 percent based on first dose card or history coverage (79 percent) and documented drop-out between first (52 percent) and third (37 percent) doses.

1998: Estimate interpolated between 1997 and 2000 estimates.

1999: Estimate interpolated between 1997 and 2000 estimates.

2000: Estimate based on survey results. Reported data (54 percent) not consistent with survey results (43 percent). Survey results (40 percent) adjusted for recall bias to 43 percent based on first dose card or history coverage (61 percent) and documented drop-out between first (44 percent) and third (31 percent) doses.

2001: Reported data (61 percent) calibrated to 2000 and 2005 levels.

2002: Reported data (74 percent) calibrated to 2000 and 2005 levels.

2003: Reported data (79 percent) calibrated to 2000 and 2005 levels.

2004: Reported data (86 percent) calibrated to 2000 and 2005 levels.

2005: Estimate based on survey results. Reported data (95 percent) not consistent with survey results (77 percent). 2 surveys, results = 80, 73, mean = 77 percent. Survey results (68 percent) adjusted for recall bias to 73 percent based on first dose card or history coverage (83 percent) and documented drop-out between first (60 percent) and third (53 percent) doses.

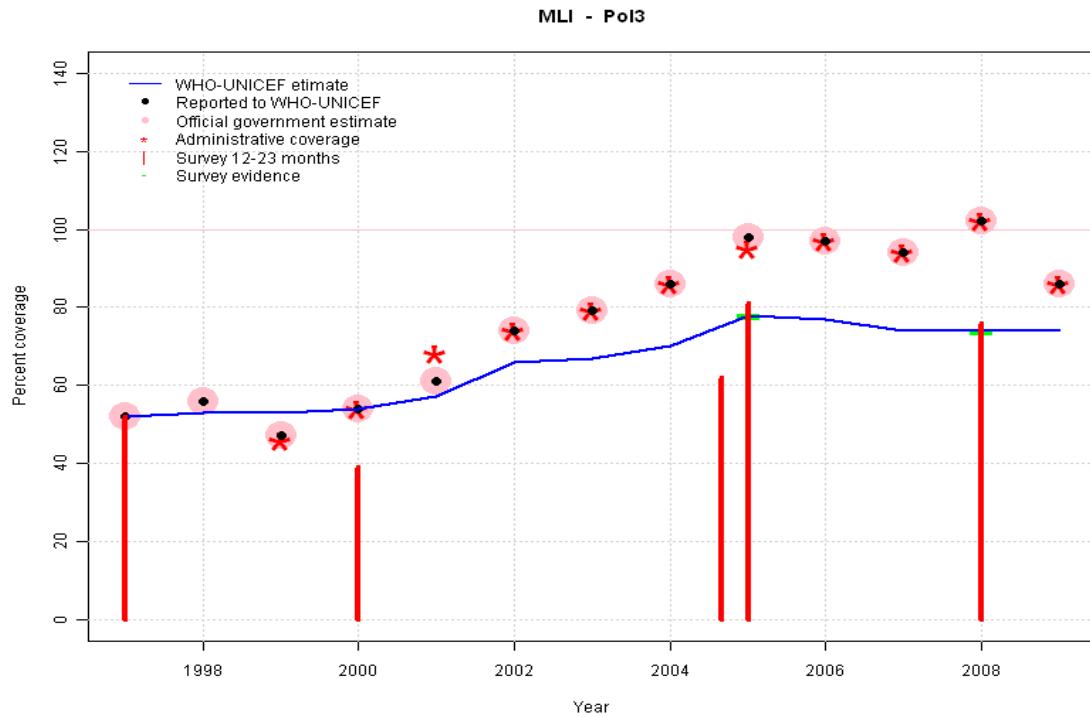
2006: Reported data (95 percent) calibrated to 2005 and 2008 levels.

2007: Reported data (91 percent) calibrated to 2005 and 2008 levels.

2008: Estimate based on survey results. Reported data (91 percent) not consistent with survey results (74 percent). Survey results (75 percent) adjusted for recall bias to 74 percent based on first dose card or history coverage (85 percent) and documented drop-out between first (54 percent) and third (47 percent) doses. 2008 reported data (103 percent) ignored; greater than 100 percent. 2008 reported data (103 percent) inconsistent with data from other years.

2009: Reported data (91 percent) calibrated to 2008 level (74 percent). 2009 reported data (89 percent) inconsistent with data from other years.

Mali - Pol3



	1997	1998	1999	2000	2001	2002	2003	2004	2005	2006	2007	2008	2009
Estimate	52	53	53	54	57	66	67	70	78	77	74	74	74
Reported	52	56	47	54	61	74	79	86	98	97	94	102	86
Official	52	56	47	54	61	74	79	86	98	97	94	102	86
Administrative	NA	NA	46	54	68	74	79	86	95	97	94	102	86
Survey	52	NA	NA	53	NA	NA	NA	NA	78	NA	NA	74	NA

Description:

1997: Legacy estimate.

1998: Estimate based on working group decision to interpolated between 1997 and 2000. Fluctuating and inconsistent data across antigens suggest poor reporting.

1999: Estimate based on working group decision to interpolated between 1997 and 2000. Fluctuating and inconsistent data across antigens suggest poor reporting.

2000: Estimate based on reported data (54 percent) confirmed by survey (53 percent). Survey results (39 percent) adjusted for recall bias to 53 percent based on first dose card or history coverage (74 percent) and documented drop-out between first (46 percent) and third (33 percent) doses.

2001: Reported data (61 percent) calibrated to 2000 and 2005 levels.

2002: Reported data (74 percent) calibrated to 2000 and 2005 levels.

2003: Reported data (79 percent) calibrated to 2000 and 2005 levels.

2004: Reported data (86 percent) calibrated to 2000 and 2005 levels.

2005: Estimate based on survey results. Reported data (98 percent) not consistent with survey results (78 percent). 2 surveys, results = 81, 75, mean = 78 percent. Survey results (62 percent) adjusted for recall bias to 75 percent based on first dose card or history coverage (85 percent) and documented drop-out between first (60 percent) and third (53 percent) doses.

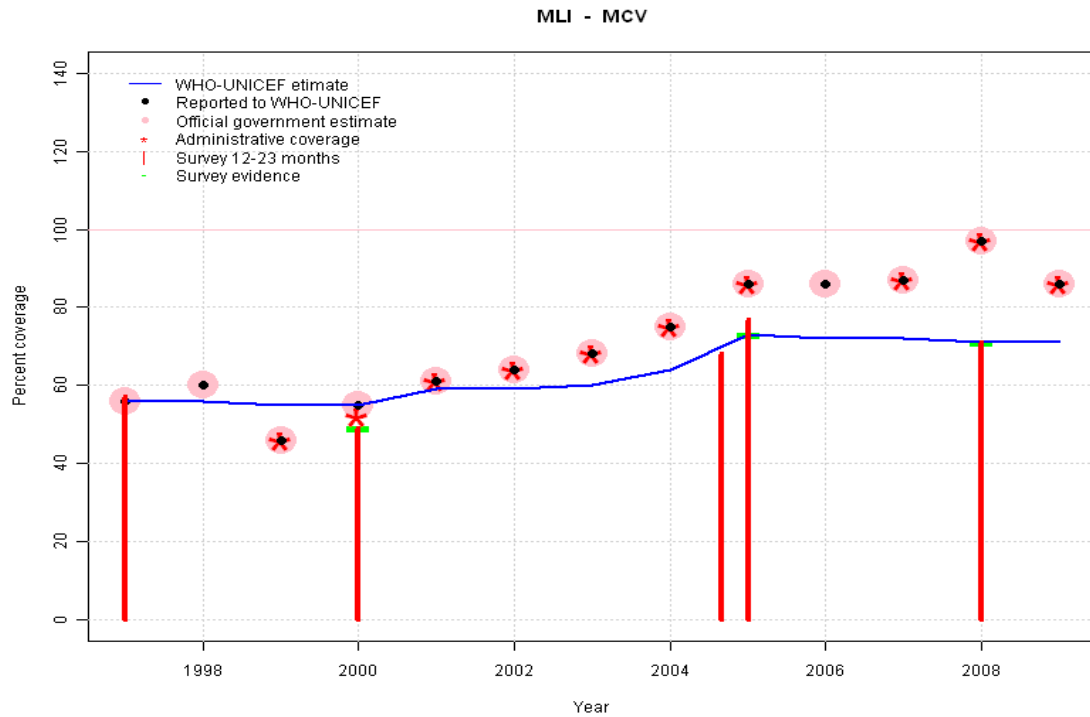
2006: Reported data (97 percent) calibrated to 2005 and 2008 levels.

2007: Reported data (94 percent) calibrated to 2005 and 2008 levels.

2008: Estimate based on survey results. Reported data (94 percent) not consistent with survey results (74 percent). Survey results (76 percent) adjusted for recall bias to 74 percent based on first dose card or history coverage (84 percent) and documented drop-out between first (52 percent) and third (46 percent) doses. 2008 reported data (102 percent) ignored; greater than 100 percent.

2009: Reported data (94 percent) calibrated to 2008 level (74 percent). 2009 reported data (86 percent) inconsistent with data from other years.

Mali - MCV



	1997	1998	1999	2000	2001	2002	2003	2004	2005	2006	2007	2008	2009
Estimate	56	56	55	55	59	59	60	64	73	72	72	71	71
Reported	56	60	46	55	61	64	68	75	86	86	87	97	86
Official	56	60	46	55	61	64	68	75	86	86	87	97	86
Administrative	NA	NA	46	52	61	64	68	75	86	NA	87	97	86
Survey	57	NA	NA	49	NA	NA	NA	NA	73	NA	NA	71	NA

Description:

1997: Legacy estimate.

1998: Estimate based on working group decision to interpolated between 1997 and 2000. Fluctuating and inconsistent data across antigens suggest poor reporting.

1999: Estimate based on working group decision to interpolated between 1997 and 2000. Fluctuating and inconsistent data across antigens suggest poor reporting.

2000: Estimate based on reported data (55 percent) confirmed by survey (49 percent).

2001: Reported data (61 percent) calibrated to 2000 and 2005 levels.

2002: Reported data (64 percent) calibrated to 2000 and 2005 levels.

2003: Reported data (68 percent) calibrated to 2000 and 2005 levels.

2004: Reported data (75 percent) calibrated to 2000 and 2005 levels.

2005: Estimate based on survey results. Reported data (86 percent) not consistent with survey results (73 percent). 2 surveys, results = 68, 77, mean = 73 percent.

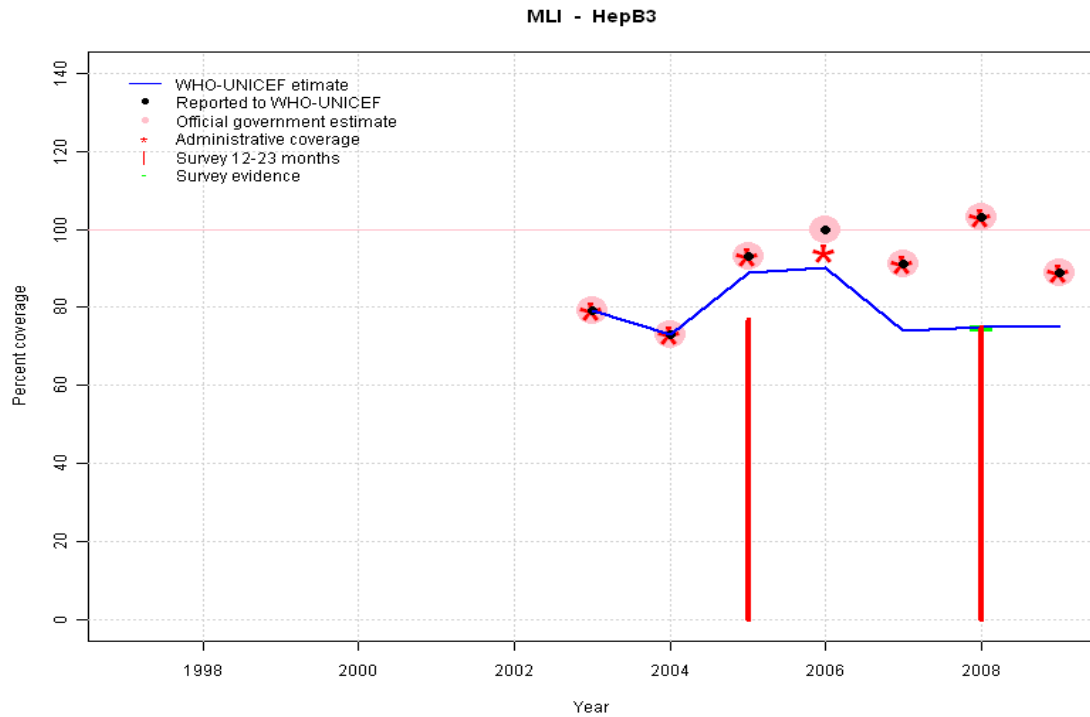
2006: Estimate interpolated between 2005 and 2008 estimates.

2007: Estimate interpolated between 2005 and 2008 estimates.

2008: Estimate based on survey results. Reported data (97 percent) not consistent with survey results (71 percent).

2009: Estimate extrapolated from 2008 level (71 percent). 2009 reported data (86 percent) inconsistent with data from other years.

Mali - HepB3

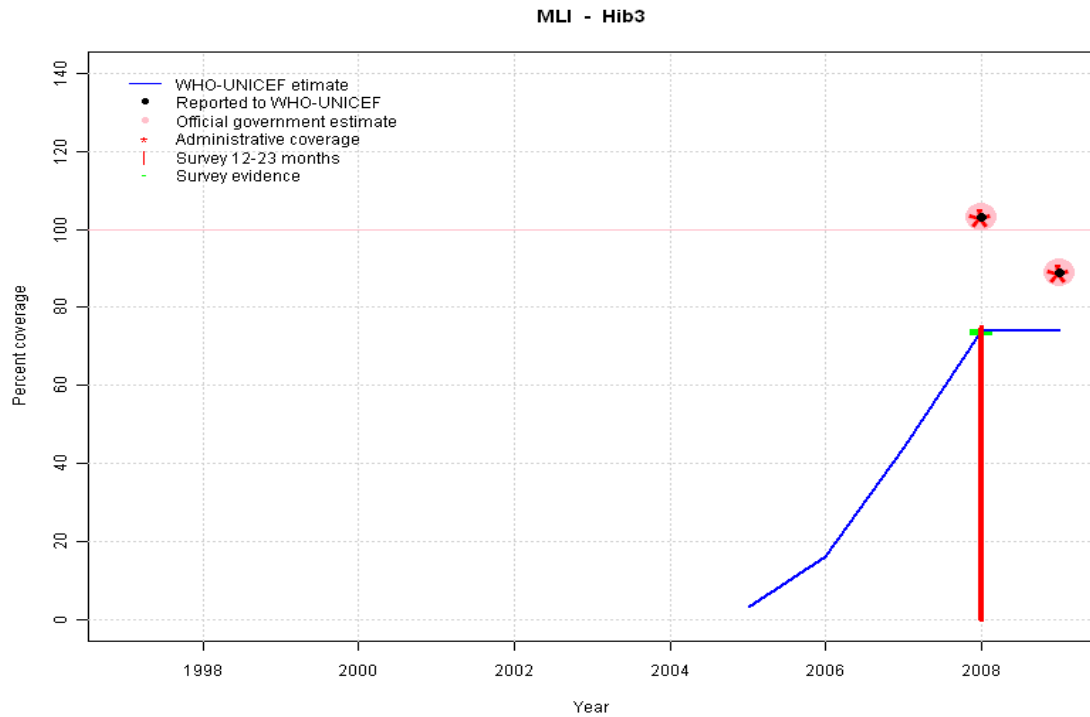


	1997	1998	1999	2000	2001	2002	2003	2004	2005	2006	2007	2008	2009
Estimate	NA	NA	NA	NA	NA	NA	79	73	89	90	74	75	75
Reported	NA	NA	NA	NA	NA	NA	79	73	93	100	91	103	89
Official	NA	NA	NA	NA	NA	NA	79	73	93	100	91	103	89
Administrative	NA	NA	NA	NA	NA	NA	79	73	93	94	91	103	89
Survey	NA	NA	NA	NA	NA	NA	NA	NA	NA	NA	NA	75	NA

Description:

- 2003: Hepatitis B introduced in 2001, nationally in 2003. HepB introduced in 2002. Reporting started in 2003. Vaccine presentation is DTP-HepB-Hib.
- 2004: Estimate follows reported data.
- 2005: Reported data (93 percent) calibrated to 2004 and 2008 levels. Survey results of 77 percent ignored by working group. Survey data available for only one of two surveys conducted in review year.
- 2006: Estimate assigned by working group. In 2006 sensitization of the population for Pentavalent introduction led to higher levels of coverage but included children outside the target age group. Reported coverage of 100 percent was reduced to 90 percent to adjust for children vaccinated outside the target age group.
- 2007: Estimate assigned by working group. Estimate follows the DTP3 levels of coverage.
- 2008: Estimate based on survey results. Reported data (91 percent) not consistent with survey results (75 percent). 2008 reported data (103 percent) ignored; greater than 100 percent. 2008 reported data (103 percent) inconsistent with data from other years.
- 2009: Estimate extrapolated from 2008 level (75 percent). 2009 reported data (89 percent) inconsistent with data from other years.

Mali - Hib3

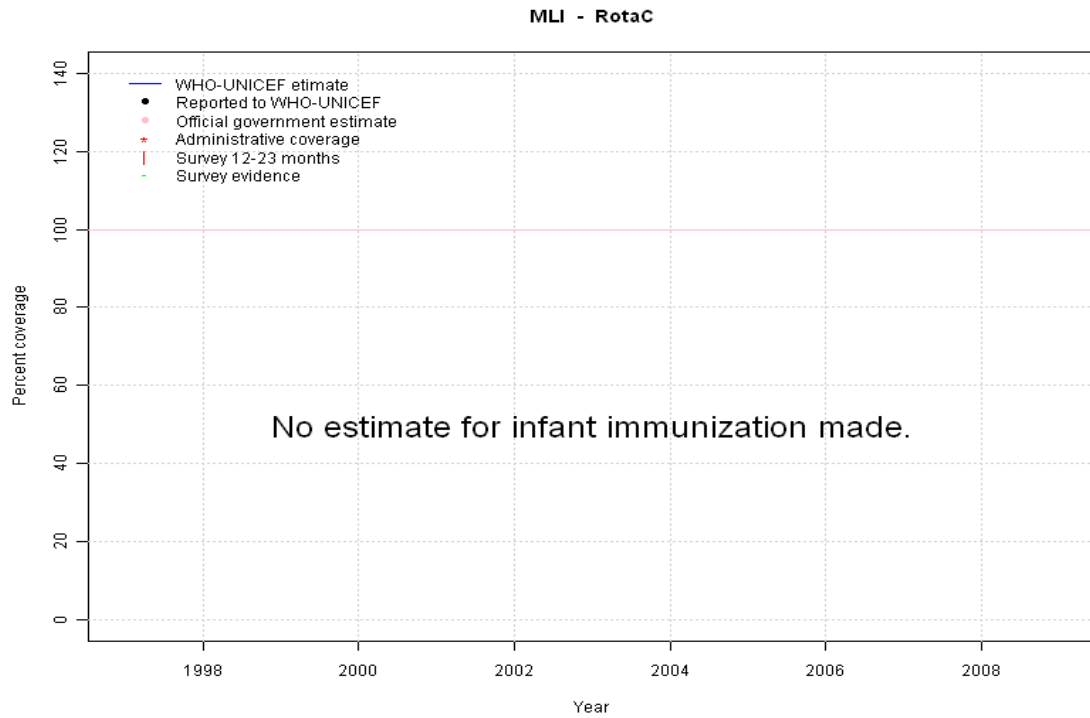


Description:

- 2005: Estimate assigned by working group. Hib partially introduced in 2005 nationally in 2007 reporting started in 2005 Vaccine presentation is DTP-HepB-Hib.
- 2006: Estimate assigned by working group. Pentavalent DTP-Hib-HepB vaccine introduced sub nationally, 100 percent coverage achieved in 16 percent of national target population.
- 2007: Estimate assigned by working group. Pentavalent DTP-Hib-HepB vaccine introduced sub nationally, 94 percent coverage achieved in 47 percent of national target population.
- 2008: Estimate assigned by working group. Pentavalent DTP-Hib-HepB available nationally. Estimate based on DTP3 coverage. Survey results (75 percent) adjusted for recall bias to 74 percent based on first dose card or history coverage (85 percent) and documented drop-out between first (54 percent) and third (47 percent) doses. 2008 reported data (103 percent) ignored; greater than 100 percent.
- 2009: Estimate assigned by working group. Pentavalent DTP-Hib-HepB available nationally. Estimate based on DTP3 coverage. 2009 reported data (89 percent) inconsistent with data from other years.

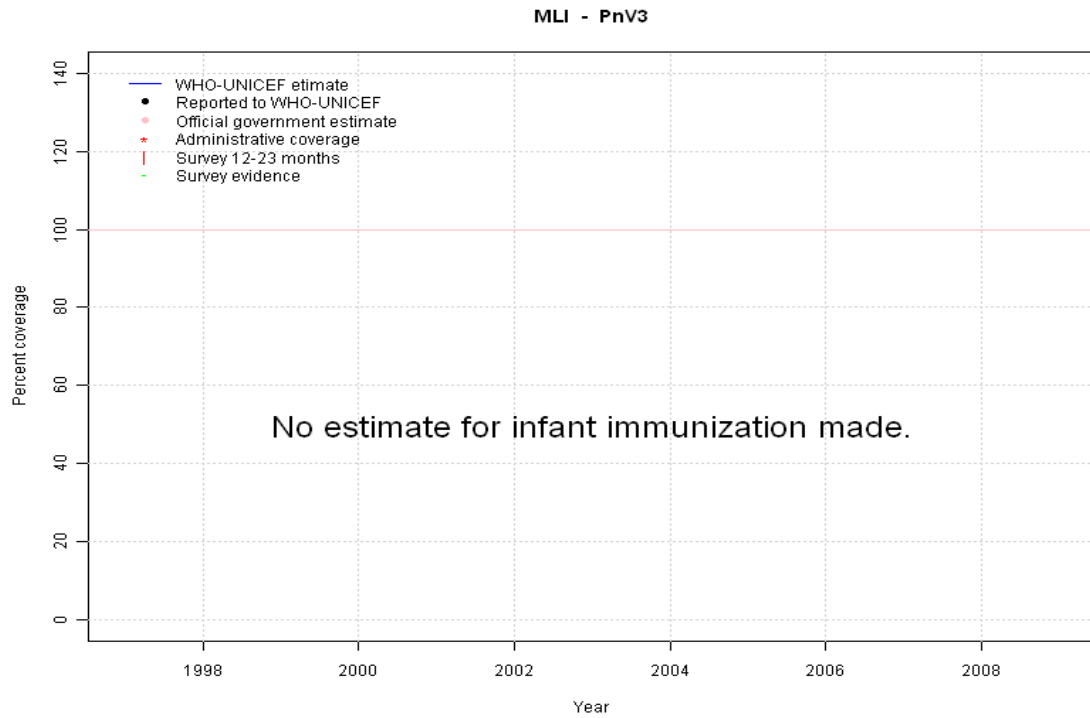
	1997	1998	1999	2000	2001	2002	2003	2004	2005	2006	2007	2008	2009
Estimate	NA	NA	NA	NA	NA	NA	NA	NA	3	16	44	74	74
Reported	NA	NA	NA	NA	NA	NA	NA	NA	NA	NA	NA	103	89
Official	NA	NA	NA	NA	NA	NA	NA	NA	NA	NA	NA	103	89
Administrative	NA	NA	NA	NA	NA	NA	NA	NA	NA	NA	NA	103	89
Survey	NA	NA	NA	NA	NA	NA	NA	NA	NA	NA	NA	74	NA

Mali - RotaC



	1997	1998	1999	2000	2001	2002	2003	2004	2005	2006	2007	2008	2009
Estimate	NA	NA	NA	NA	NA	NA	NA	NA	NA	NA	NA	NA	NA
Reported	NA	NA	NA	NA	NA	NA	NA	NA	NA	NA	NA	NA	NA
Official	NA	NA	NA	NA	NA	NA	NA	NA	NA	NA	NA	NA	NA
Administrative	NA	NA	NA	NA	NA	NA	NA	NA	NA	NA	NA	NA	NA
Survey	NA	NA	NA	NA	NA	NA	NA	NA	NA	NA	NA	NA	NA

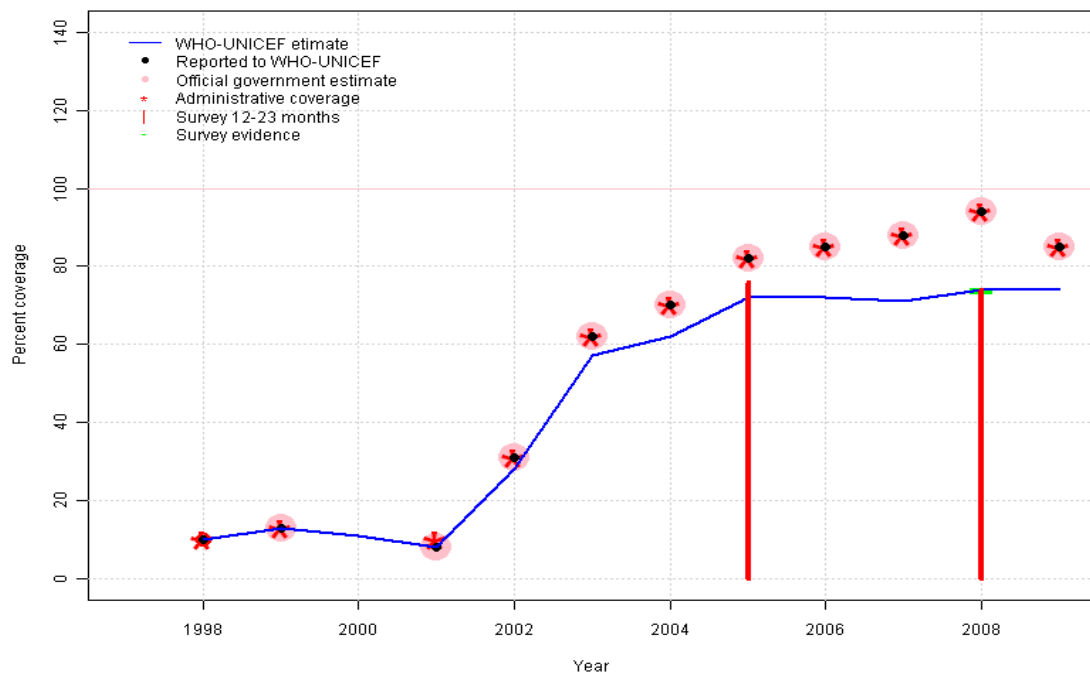
Mali - PnV3



	1997	1998	1999	2000	2001	2002	2003	2004	2005	2006	2007	2008	2009
Estimate	NA	NA	NA	NA	NA	NA	NA	NA	NA	NA	NA	NA	NA
Reported	NA	NA	NA	NA	NA	NA	NA	NA	NA	NA	NA	NA	NA
Official	NA	NA	NA	NA	NA	NA	NA	NA	NA	NA	NA	NA	NA
Administrative	NA	NA	NA	NA	NA	NA	NA	NA	NA	NA	NA	NA	NA
Survey	NA	NA	NA	NA	NA	NA	NA	NA	NA	NA	NA	NA	NA

Mali - YFV

MLI - YFV



Description:

- 1998: Estimate based on trend in reported data. YFV partially introduced in 1998 nationally in 2002 reporting started in 1998
- 1999: Estimate based on trend in reported data.
- 2000: Estimate based on trend in reported data. Missing or ignored reported value estimated by interpolation between reported values of 13 percent in 1999 and 8 percent in 2001.
- 2001: The last year before financial support started for the yellow fever vaccination programme.
- 2002: Reported data (31 percent) calibrated to 2001 and 2005 levels.
- 2003: Reported data (62 percent) calibrated to 2001 and 2005 levels.
- 2004: Reported data (70 percent) calibrated to 2001 and 2005 levels.
- 2005: Estimate follows MCV coverage levels. Survey results of 76 percent ignored by working group. Results based on only one of two surveys available in review year.
- 2006: Reported data (85 percent) calibrated to 2005 and 2008 levels.
- 2007: Reported data (88 percent) calibrated to 2005 and 2008 levels.
- 2008: Estimate based on survey results. Reported data (94 percent) not consistent with survey results (74 percent).
- 2009: Reported data (94 percent) calibrated to 2008 level (74 percent). 2009 reported data (85 percent) ignored by working group. The reported data in 2009 are based on a revised denominator series.

	1997	1998	1999	2000	2001	2002	2003	2004	2005	2006	2007	2008	2009
Estimate	NA	10	13	11	8	28	57	62	72	72	71	74	74
Reported	NA	10	13	NA	8	31	62	70	82	85	88	94	85
Official	NA	NA	13	NA	8	31	62	70	82	85	88	94	85
Administrative	NA	10	13	NA	10	31	62	70	82	85	88	94	85
Survey	NA	NA	NA	NA	NA	NA	NA	NA	NA	NA	NA	74	NA

Mali - survey details

2008 Evaluation de la couverture vaccinale du PEV Mali, 2009-2010

Vaccine	Confirmation method	Coverage	Age cohort	Sample	Cards seen
BCG	Card or History	86	12-23 m	11760	65
BCG	Card	54	12-23 m	11760	65
BCG	History	32	12-23 m	11760	65
DTP1	Card or History	85	12-23 m	11760	65
DTP1	Card	54	12-23 m	11760	65
DTP1	History	31	12-23 m	11760	65
DTP3	History	28	12-23 m	11760	65
DTP3	Card or History	75	12-23 m	11760	65
DTP3	Card	47	12-23 m	11760	65
HepB1	Card	54	12-23 m	11760	65
HepB1	Card or History	85	12-23 m	11760	65
HepB1	History	31	12-23 m	11760	65
HepB3	History	28	12-23 m	11760	65
HepB3	Card	47	12-23 m	11760	65
HepB3	Card or History	75	12-23 m	11760	65
Hib1	Card or History	85	12-23 m	11760	65
Hib1	Card	54	12-23 m	11760	65
Hib1	History	31	12-23 m	11760	65
Hib3	History	28	12-23 m	11760	65
Hib3	Card or History	75	12-23 m	11760	65
Hib3	Card	47	12-23 m	11760	65
MCV	Card or History	71	12-23 m	11760	65
MCV	History	26	12-23 m	11760	65
MCV	Card	46	12-23 m	11760	65
Pol1	Card	52	12-23 m	11760	65
Pol1	History	33	12-23 m	11760	65
Pol1	Card or History	84	12-23 m	11760	65
Pol3	Card or History	76	12-23 m	11760	65
Pol3	Card	46	12-23 m	11760	65
Pol3	History	30	12-23 m	11760	65
YFV	Card	43	12-23 m	11760	65
YFV	History	30	12-23 m	11760	65
YFV	Card or History	74	12-23 m	11760	65

2005 Enquête Démographique et de Santé du Mali, 2006

Vaccine	Confirmation method	Coverage	Age cohort	Sample	Cards seen
BCG	History	23	12-23 m	2626	61
BCG	Card or History	77	12-23 m	2626	61
BCG	C or H <12 months	75	12-23 m	2626	61
BCG	Card	54	12-23 m	2626	61
DTP1	C or H <12 months	80	12-23 m	2626	61
DTP1	Card	60	12-23 m	2626	61
DTP1	Card or History	83	12-23 m	2626	61
DTP1	History	23	12-23 m	2626	61
DTP3	C or H <12 months	62	12-23 m	2626	61
DTP3	Card	53	12-23 m	2626	61
DTP3	Card or History	68	12-23 m	2626	61
DTP3	History	15	12-23 m	2626	61
MCV	History	20	12-23 m	2626	61
MCV	C or H <12 months	59	12-23 m	2626	61
MCV	Card	49	12-23 m	2626	61
MCV	Card or History	68	12-23 m	2626	61
Pol1	Card or History	85	12-23 m	2626	61
Pol1	C or H <12 months	82	12-23 m	2626	61
Pol1	History	26	12-23 m	2626	61
Pol1	Card	60	12-23 m	2626	61
Pol3	C or H <12 months	57	12-23 m	2626	61
Pol3	Card	53	12-23 m	2626	61
Pol3	Card or History	62	12-23 m	2626	61
Pol3	History	9	12-23 m	2626	61

2005 République du Mali, Programme élargi du vaccination, Revue externe èà-

Vaccine	Confirmation method	Coverage	Age cohort	Sample	Cards seen
BCG	Card or History	89	12-23 m	1710	78
DTP1	Card or History	91	12-23 m	1710	78
DTP3	Card or History	80	12-23 m	1710	78
HepB1	Card or History	87	12-23 m	1710	78
HepB3	Card or History	77	12-23 m	1710	78
MCV	Card or History	77	12-23 m	1710	78
Pol1	Card or History	91	12-23 m	1710	78
Pol3	Card or History	81	12-23 m	1710	78

Mali - survey details

YFV	Card or History	76	12-23 m	1710	78
-----	-----------------	----	---------	------	----

2000 Enquête Démographique et de Santé Mali 2001, 2002

Vaccine	Confirmation method	Coverage	Age cohort	Sample	Cards seen
BCG	Card	47	12-23 m	2197	48
BCG	Card or History	69	12-23 m	2197	48
BCG	History	22	12-23 m	2197	48
BCG	C or H <12 months	64	12-23 m	2197	48
DTP1	C or H <12 months	56	12-23 m	2197	48
DTP1	Card	44	12-23 m	2197	48
DTP1	Card or History	61	12-23 m	2197	48
DTP1	History	17	12-23 m	2197	48
DTP3	History	8	12-23 m	2197	48
DTP3	C or H <12 months	34	12-23 m	2197	48
DTP3	Card	31	12-23 m	2197	48
DTP3	Card or History	40	12-23 m	2197	48
MCV	History	13	12-23 m	2197	48
MCV	Card	36	12-23 m	2197	48
MCV	Card or History	49	12-23 m	2197	48
MCV	C or H <12 months	36	12-23 m	2197	48
Pol1	Card	46	12-23 m	2197	48

Pol1	Card or History	74	12-23 m	2197	48
Pol1	History	28	12-23 m	2197	48
Pol1	C or H <12 months	68	12-23 m	2197	48
Pol3	History	6	12-23 m	2197	48
Pol3	C or H <12 months	34	12-23 m	2197	48
Pol3	Card	33	12-23 m	2197	48
Pol3	Card or History	39	12-23 m	2197	48

1997 Enquete de couverture vaccinale au Mali 1998

Vaccine	Confirmation method	Coverage	Age cohort	Sample	Cards seen
BCG	Card or History	84	12-23 m	1521	57
BCG	Card	62	12-23 m	1521	57
DTP1	Card or History	79	12-23 m	1521	57
DTP1	Card	52	12-23 m	1521	57
DTP3	Card or History	52	12-23 m	1521	57
DTP3	Card	37	12-23 m	1521	57
MCV	Card or History	57	12-23 m	1521	57
MCV	Card	41	12-23 m	1521	57
Pol3	Card	37	12-23 m	1521	57
Pol3	Card or History	52	12-23 m	1521	57

Further information and estimates for 1980-1996 are available at:

http://www.childinfo.org/immunization_countryreports.html

http://www.who.int/immunization_monitoring/routine/immunization_coverage/en/index4.html

Mali

WHO/UNICEF Estimates of Protection at Birth (PAB) against tetanus

In countries where tetanus is recommended for girls and women coverage is usually reported as "TT2+", i.e. the proportion of (pregnant) women who have received their second or superior TT dose in a given year. TT2 + coverage, however, can under-represent the actual proportion of births that are protected against tetanus as it does not include women who have previously received protective doses, women who received one dose without documentation of previous doses, and women who received doses in TT (or Td) supplemental immunization activities (SIA). In addition, girls who have received DTP in their childhood and are entering childbearing age, may be protected with TT booster doses.

WHO and UNICEF have developed a model that takes into account the above scenarios, and calculates the proportion of births in a given year that can be considered as having been protected against tetanus - "Protection at Birth".

In this model, annual cohorts of women are followed from infancy through their life. A proportion receive DTP in infancy (estimated based on the WHO-UNICEF estimates of DTP3 coverage). In addition some of these women also receive TT through routine services when they are pregnant and may also receive TT during SIAs. The model also adjusts reported data, taking into account coverage patterns in other years, and/or results available through surveys. The duration of protection is then calculated, based on WHO estimates of the duration of protection by doses ever received. The proportion of births that are protected against tetanus as a result of maternal immunization reflects the tetanus immunization received by the mother throughout her life rather than simply the TT immunizations received during the current pregnancy.

Year	PAB coverage estimate (%)
1997	37
1998	38
1999	43
2000	50
2001	52
2002	59
2003	60
2004	86
2005	86
2006	89
2007	90
2008	92
2009	92

¹ This model is described in: Griffiths U., Wolfson L., Quddus A., Younus M., Hafiz R.. Incremental cost-effectiveness of supplementary immunization activities to prevent neo-natal tetanus in Pakistan. Bulletin of the World Health Organization 2004; 82:643-651.