



**WHO / UNICEF**

**Joint Monitoring Programme  
for Water Supply and Sanitation**

Coverage Estimates  
**Improved Sanitation**

Updated in July 2008

---

**Mauritania**

---

# Mauritania

## Survey

MICS	1996	
	Urban	Rural
<b>SANITATION</b>		
Sewage System	5.0	0.8
Septic Tank/Pit	8.5	8.7
Covered Latrine	30.7	9.6
Uncovered Latrine	28.6	22.3
No Installation	23.0	48.6
Other	4.2	10.0
<b>TOTAL</b>	<b>100.0</b>	<b>100.0</b>
Ratio covered Latrines/all latrines	0.52	0.30
<b>% Use of an improved sanitation facility</b>	<b>44%</b>	<b>19%</b>
<b>% Sewerage connections</b>	<b>5%</b>	<b>1%</b>

Source: Multiple Indicator Cluster Survey, Mauritania, 1996.

DHS	2001	
	Urban	Rural
<b>SANITATION</b>		
Chasse d'eau avec évacuation:	4.1	0.1
Latrines avec système d'évacuation:	8.1	0.4
Latrines sans système d'évacuation:	33.1	3.8
Fosse/Latrines rudimentaires:	30.9	21.4
Pas de toilettes/ nature	23.4	73.4
Autre	0.4	0.9
<b>Total</b>	<b>100</b>	<b>100</b>
Covered latrines, based on WHS03	36.5	12.7
<b>% Use of an improved sanitation facility</b>	<b>49%</b>	<b>13%</b>
<b>% Sewerage connections</b>	<b>4%</b>	<b>0%</b>

Source: Mauritanie, Enquête démographique et de santé, 2001.

WHS	2003	
	Urban	Rural
Proportion shared improved facilities/all improved facilities	0.21	0.41
<b>SANITATION</b>		
Private domestic connection to sewage system	17.4	1.7
Shared domestic connection to sewage system	1.9	0.9
Private flush to septic tank	26.3	2.4
Shared flush to septic tank	9.3	2.3
Private pour flush latrine	8.1	5.7
Shared pour flush latrine	3.1	4.2
Private covered dry latrine (with privacy)	9.1	5.4
Shared covered dry latrine (with privacy)	2.0	3.5
Uncovered dry latrine (without privacy)	5.9	4.4
Bucket latrine (where fresh excreta are manually removed)	2.5	4.4
No facilities (open defecation)	12.9	55.4
Other	1.5	9.9
<b>TOTAL</b>	<b>100.0</b>	<b>100.0</b>
Ratio covered dry latrines/all dry latrines	0.57	0.50
<b>% Use of an improved sanitation facility</b>	<b>77%</b>	<b>26%</b>
<b>% Sewerage connections</b>	<b>19%</b>	<b>3%</b>

Source: World Health Survey, WHO, 2003.

EMIP 2004		
SANITATION	Urban	Rural
Chasse d'eau avec systeme d'evacuation	8.8	2.6
Latrine avec systeme d'evacuation	8.9	1.3
Latrine sans systeme d'evacuation	33.9	6.9
Fosse/ latrine rudimentaire	29.9	13.2
Pas de toilettes/ nature	17.9	75.2
Autre	0.6	0.9
<b>Total</b>	<b>100.0</b>	<b>100.1</b>
Covered latrines, based on WHS03	36.4	10.1
<b>% Use of an improved sanitation facility</b>	<b>54%</b>	<b>14%</b>
<b>% Sewerage connections</b>	<b>9%</b>	<b>3%</b>

Source: Mauritanie, Enquête sur la Mortalité Infantile et le Paludisme, EMIP 2003-2004

Census		
CENSUS	1995	
(Population in thousands)		
SANITATION	Urban	Rural
Sewerage System	54.930	8.340
Septic Tank/Pit	93.380	90.740
Covered & Uncovered Latrine	651.490	332.700
Other	46.140	104.290
Not Specified	253.060	506.889
<b>Total Population</b>	<b>1'099.000</b>	<b>1'042.959</b>
Covered latrines, based on MICS96	337.3	100.1
<b>% Use of an improved sanitation facility</b>	<b>44%</b>	<b>19%</b>
<b>% Sewerage connections</b>	<b>5%</b>	<b>1%</b>

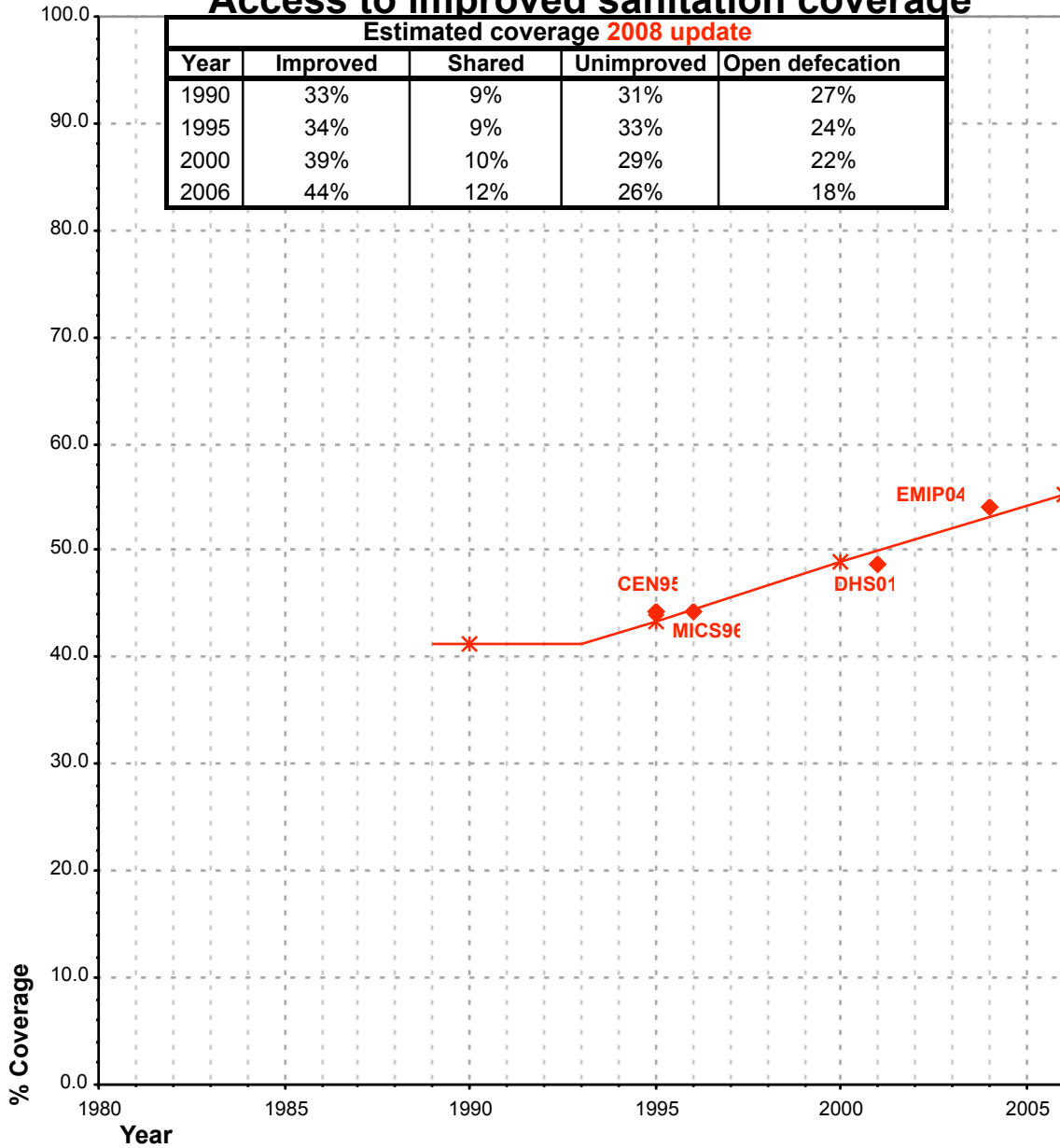
Source: 1995 National Census Data as recorded in Form 4 of the Global Water Supply and Sanitation Assessment 2000. Water Supply and

Estimate		
FORM6/WHO	1999	
(Population in thousands)		
SANITATION	Urban	Rural
connections to conventional sewers but served with adequate, private or shared		
<b>Total population served</b>	<b>533</b>	<b>219</b>
Total population unserved	673	926
<b>Total population</b>	<b>1'206</b>	<b>1'145</b>
<b>% Use of an improved sanitation facility</b>	<b>44%</b>	<b>19%</b>
<b>% Sewerage connections</b>		

Source: Global Water Supply and Sanitation Assessment 2000. Water Supply and Sanitation Sector Questionnaire - 1999.

Mauritania			SANITATION								OPEN DEFECCATION				
			URBAN				RURAL								
			Source	Code	Year	HC		Total		HC		Total		Urban	
Used for estimates	Not used for estimates	Used for estimates				Not used for estimates	Used for estimates	Not used for estimates	Used for estimates	Not used for estimates	Used for estimates	Not used for estimates	Used for estimates	Not used for estimates	
The International Drinking Water Supply and Sanitation Decade. Review of National Baseline Data (as at December 1980). WHO 1984	WHO80	1980		5.0		5.0									
The International Drinking Water Supply and Sanitation Decade. Review of National Progress (as at December 1983). WHO 1986.	WHO83	1983		4.0							0.0				
The International Drinking Water Supply and Sanitation Decade. Review of Mid-Decade Progress (as at December 1985). WHO 1987.	WHO85	1985		3.0		8.0									
The International Drinking Water Supply and Sanitation Decade. Review of National Progress (as at December 1988). WHO 1990.	WHO88	1988		4.0		34.0									
Water Supply and Sanitation Sector Monitoring Report - 1996. Sector Status as of 31 December 1994. WHO/UNICEF 1996.	JMP96	1994													
National Census, Ministry of Economic Affairs & Development, Nouakchott, Mauritania, 1995.	CEN95	1995	5.0		44.2		0.8		19.1						
Multiple Indicator Cluster Survey, Mauritania 1996.	MICS96	1996	5.0		44.2		0.8		19.1		23.0		48.6		
Global Water Supply and Sanitation Assessment 2000. Water Supply and Sanitation Sector Questionnaire - 1999. (Form 6 sent to WHO)	JMP99	1999				44.0				19.0					
Mauritanie, Enquête démographique et de santé, 2001.	DHS01	2001	4.1		48.7		0.1		13.2		23.4		73.4		
World Health Survey, WHO, 2003.	WHS03	2003	19.3			77.2	2.6		26.0			12.9	55.4		
Enquête sur la Mortalité Infantile et le Paludisme, EMIP 2003-2004	EMIP04	2004	8.8		54.1		2.6		14.0		17.9		75.2		

# Mauritania - urban - Access to improved sanitation coverage



Improved plus shared

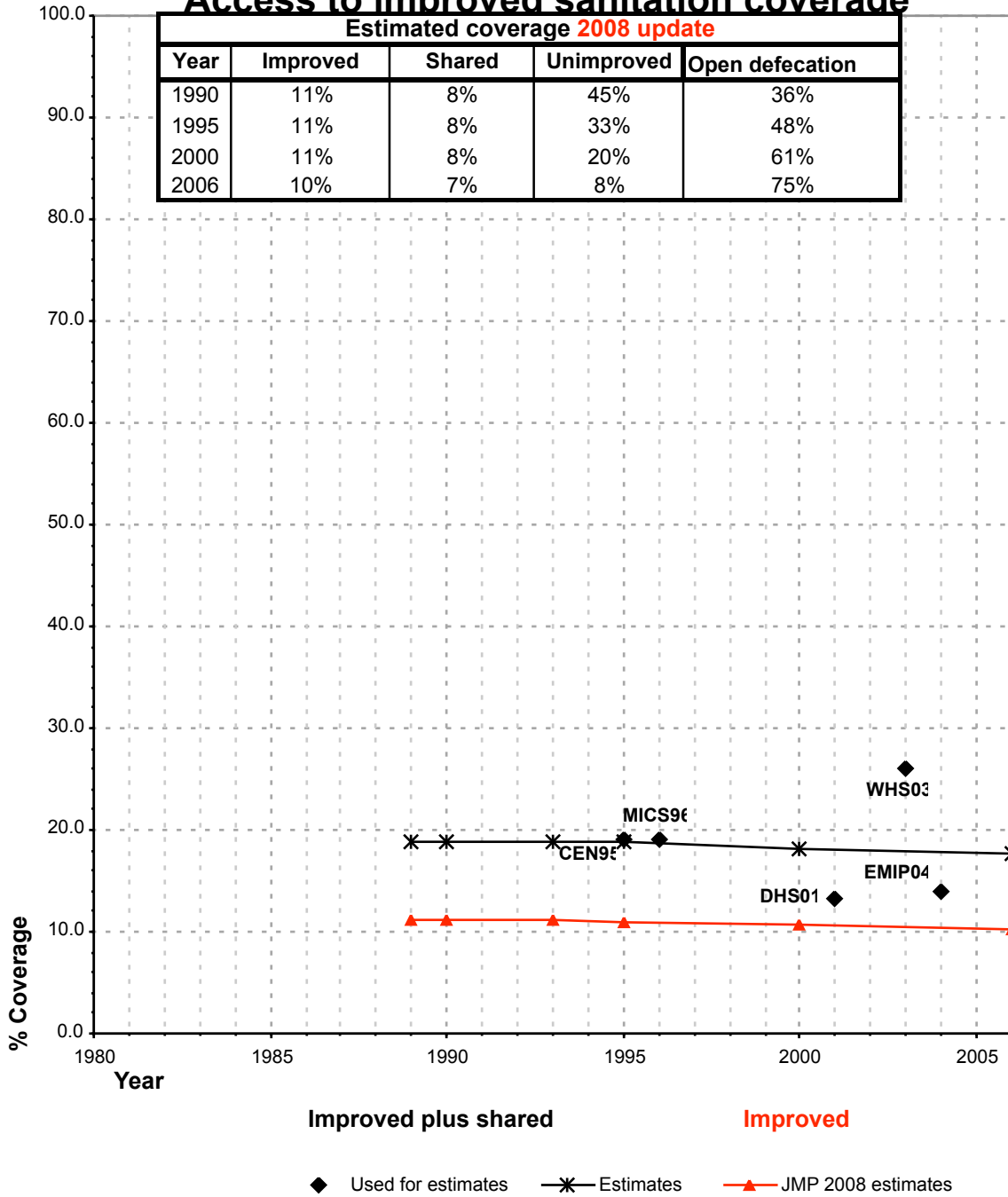
◆ Used for estimates

✱ Estimates

**Shared facilities :**

The proportion of the population using a shared improved sanitation facility is based on the WHS03

# Mauritania - rural - Access to improved sanitation coverage



**Shared facilities :**

The proportion of the population using a shared improved sanitation facility is based on the WHS03