



WHO / UNICEF

**Joint Monitoring Programme
for Water Supply and Sanitation**

Coverage Estimates
Improved Sanitation

Updated in July 2008

Madagascar

MADAGASCAR

Survey

DHS	1992	
	Urban	Rural
SANITATION		
Private Cistern	8.6	0.1
Shared Cistern	8.0	0.1
Latrine	49.5	25.5
Simple Pit	3.4	0.3
No Facilities/Nature	22.1	70.3
Other	0.1	0.0
Not Defined	8.3	3.7
TOTAL	100.0	100.0
50% of simple pit and latrine considered improved	26.5	12.9
%Use of an improved sanitation facility	43%	13%
% Sewerage connections		

Source: Demographic and Household Survey, Madagascar, 1992.

MICS	1995	
	Urban	Rural
INSUFFICIENT INFORMATION		
SANITATION		
TOTAL	0.0	0.0
%Use of an improved sanitation facility		
% Sewerage connections		

Source: Multiple Indicator Cluster Survey, Madagascar, 1995.

DHS	1997	
	Urban	Rural
SANITATION		
Cistern	7.4	0.7
Ventilated Pit	51.8	26.0
Simple Pit	8.9	3.5
No Facilities/Nature	31.8	69.8
Other	0.1	0.0
TOTAL	100.0	100.0
50% of ventilated Pit and simple pit considered improved	30.4	14.8
%Use of an improved sanitation facility	38%	15%
% Sewerage connections		

Source: Demographic and Household Survey, Madagascar, 1997.

MICS 2000			
SANITATION	Total Urban	Rural	Total
Tout a l'egout ("sewer")	1.0	0.1	0.3
Fosse septique	8.0	0.5	2.2
Latrine avec dalle ventile	0.8	0.0	0.2
Latrine avec dalle non ventile	1.3	0.0	0.3
Latrine traditionnelle	13.0	1.6	4.1
Fosse improvisee/ perdue	58.8	50.1	52.0
Aucun	17.2	47.6	40.9
TOTAL	99.1	99.8	99.7
50% of latrine traditionnelle considered improved	35.9	25.9	28.1
%Use of an improved sanitation facility	46%	26%	31%
% Sewerage connections	8%	1%	3%

Source: MICS 2000, Madagascar, Rapport Complet

DHS 2004			
Shared improved facilities		0.62	0.61
SANITATION	Total Urban	Rural	Total
Chasse d'eau avec evacuation/WC	7.4	0.7	2.2
Latrines ameliorees	3.0	0.2	0.8
Fosse/Latrine a plein air	6.9	1.5	2.7
Fosse perdue	63.6	45.2	49.4
Nature/Pas de toilette	19.1	52.5	44.9
TOTAL	100.0	100.1	100.0
50% of fosse perdue considered improved	35.3	23.4	26.1
%Use of an improved sanitation facility	46%	24%	29%
% Sewerage connections	7%	1%	2%

Source: DHS 2004, Madagascar

Census

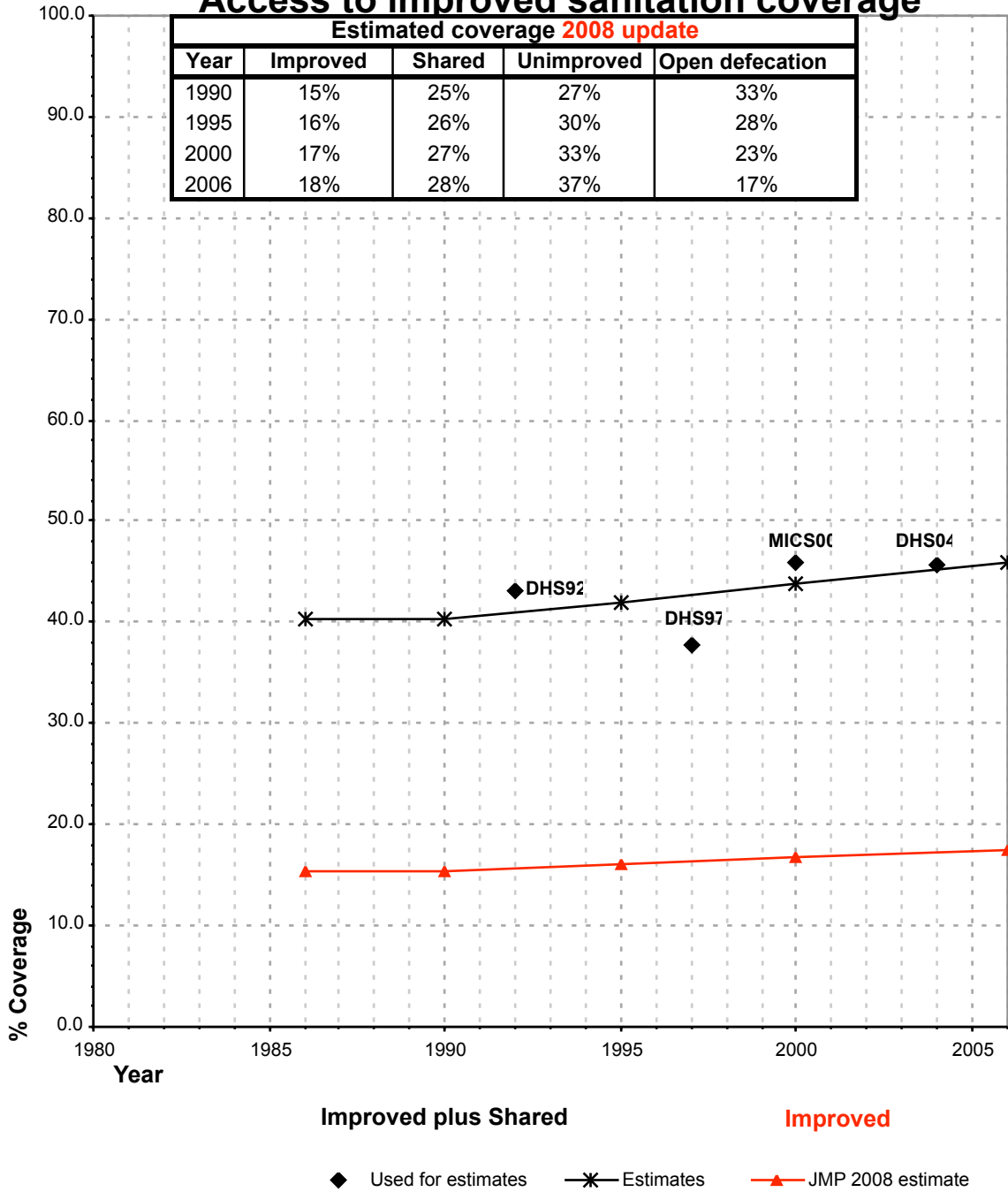
CENSUS	1993	
(Population in thousands)*		
SANITATION	Urban	Rural
Inside, Private WC	167	39
Outside, Private WC	78	44
Private Soakaway	446	1068
Shared WC (Inside/Outside)	103	20
Shared Soakaway	902	1137
Bucket/Not Defined	98	221
Nature, No Facility	1044	6899
Total Population Served	1695	2308
Total Population (1993)	2837	9428
%Use of an improved sanitation facility	60%	24%
% Sewerage connections	9%	1%

Source: 1993 National Census data as recorded in Form 4 of the Global Water Supply and Sanitation Assessment 2000. Water Supply and Sanitation Sector Questionnaire - 1999.

* NB. Original Form 4 data was in number of households. Data in

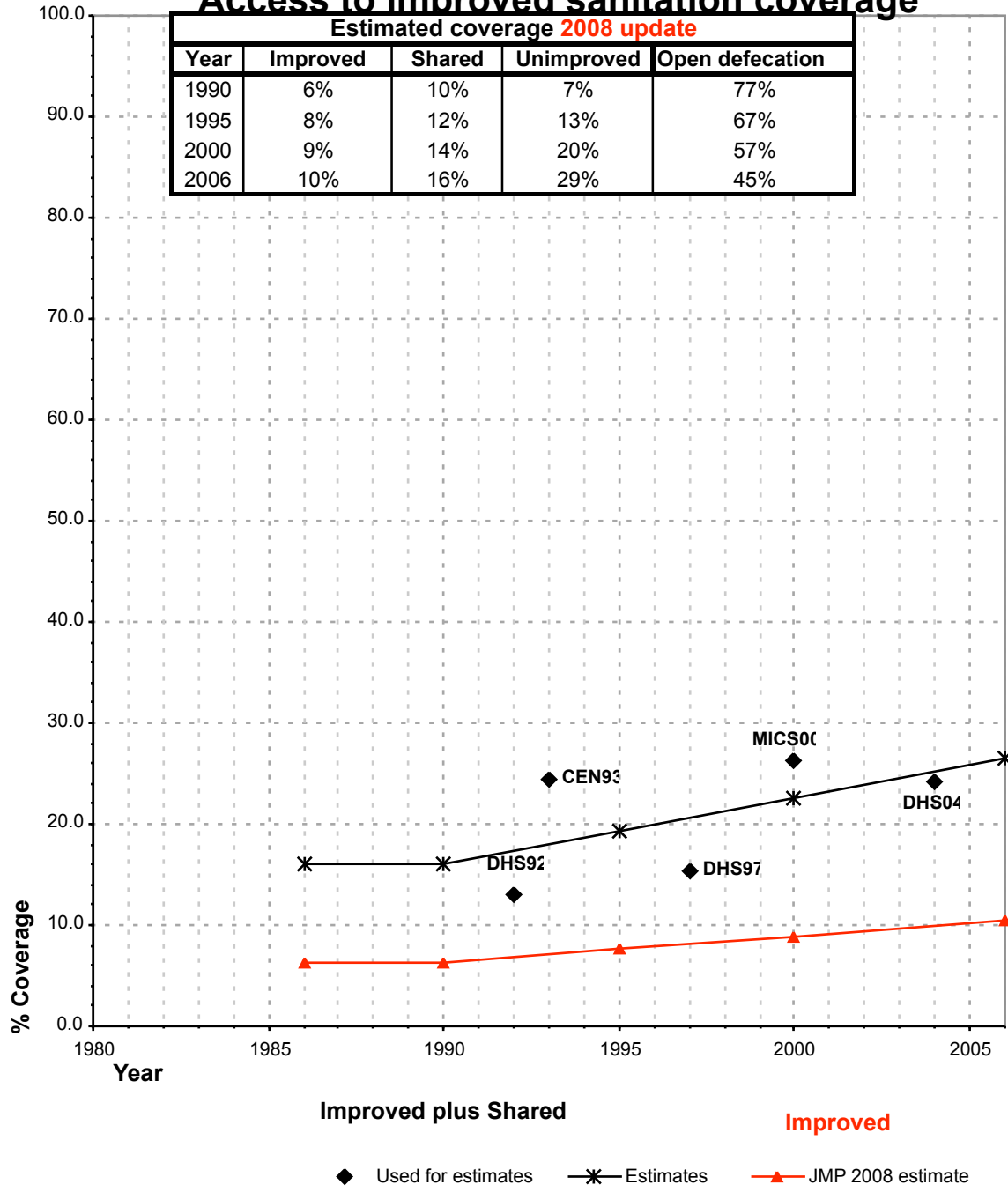
Madagascar			SANITATION								OPEN DEFECCATION			
			URBAN				RURAL							
			Source	Code	Year	HC		Total		HC		Total		Urban
Used for estimates	Not used for estimates	Used for estimates				Not used for estimates	Used for estimates	Not used for estimates	Used for estimates	Not used for estimates	Used for estimates	Not used for estimates	Used for estimates	Not used for estimates
The International Drinking Water Supply and Sanitation Decade. Review of National Baseline Data (as at December 1980). WHO 1984	WHO80	1980		4.0		9.0								
The International Drinking Water Supply and Sanitation Decade. Review of National Progress (as at December 1983). WHO 1986.	WHO83	1983		3.0										
The International Drinking Water Supply and Sanitation Decade. Review of Mid-Decade Progress (as at December 1985). WHO 1987.	WHO85	1985		55.0										
The International Drinking Water Supply and Sanitation Decade. Review of National Progress (as at December 1988). WHO 1990.	WHO88	1988												
Water Supply and Sanitation Sector Monitoring Report 1993 (Sector Status as of 31 December 1991)	JMP93	1991		10.0		12.0					3.0			
Madagascar Demographic and Health Survey 1992.	DHS92	1992	0.0		43.1		0.0		13.1			22.1		70.3
1993 Madagascar census as recorded in the Water Supply and Sanitation Sector Monitoring Report 1996. Sector Status as of December 1994. WHO/UNICEF 1996. (form 4)	CEN93	1993				59.8			24.5			36.8		73.2
Water Supply and Sanitation Sector Monitoring Report - 1996. Sector Status as of 31 December 1994. WHO/UNICEF 1996.	JMP96	1994				50.0					3.0			
Multiple Indicator Cluster Survey 1995. National Institute of Statistics & UNICEF, Madagascar, 1995.	MICS95	1995												
Madagascar Demographic and Health Survey 1997.	DHS97	1997	0.0		37.8		0.0		15.5			31.8		69.8
Global Water Supply and Sanitation Assessment 2000. Water Supply and Sanitation Sector Questionnaire - 1999. (Form 6 sent to WHO)	JMP99	1999												
MICS 2000, Madagascar, Rapport Complet	MICS00	2000	8.0		46.0		0.6		26.4			17.2		47.6
Madagascar Demographic and Health Survey 2004.	DHS04	2004	7.4		45.7		0.7		24.3			19.1		52.5

Madagascar - urban - Access to improved sanitation coverage



Shared facilities :
The proportion of the population using a shared improved sanitation facility is based on the DHS04

Madagascar - rural - Access to improved sanitation coverage



Shared facilities :
The proportion of the population using a shared improved sanitation facility is based on the DHS04