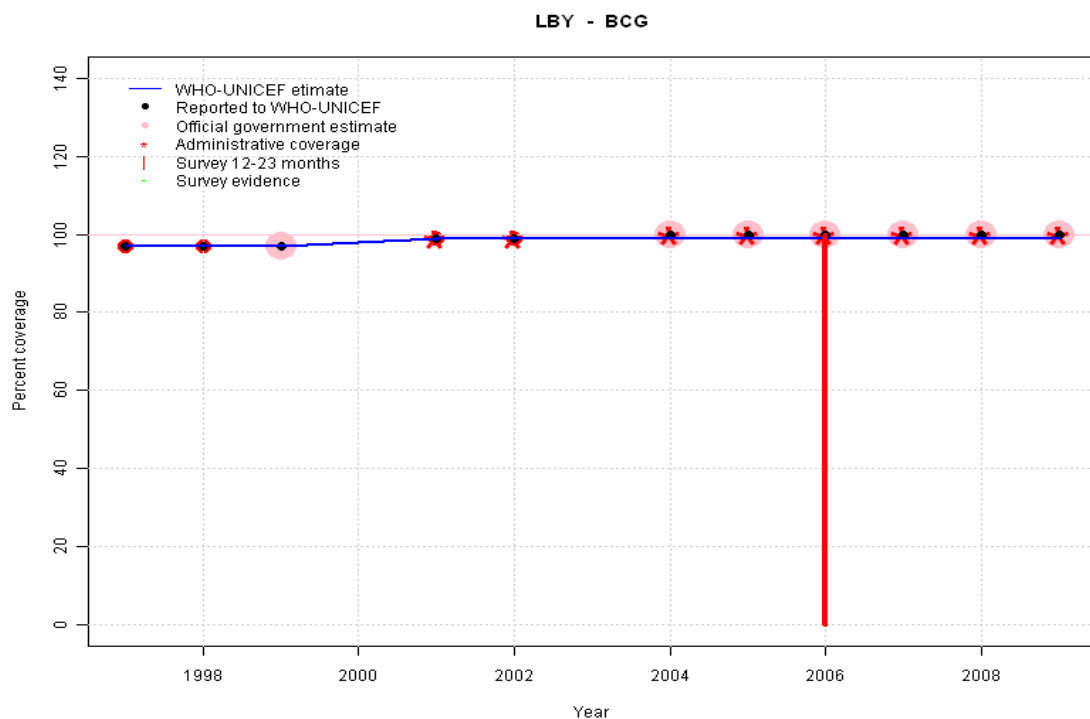


# Libyan Arab Jamahiriya - BCG

## Description:

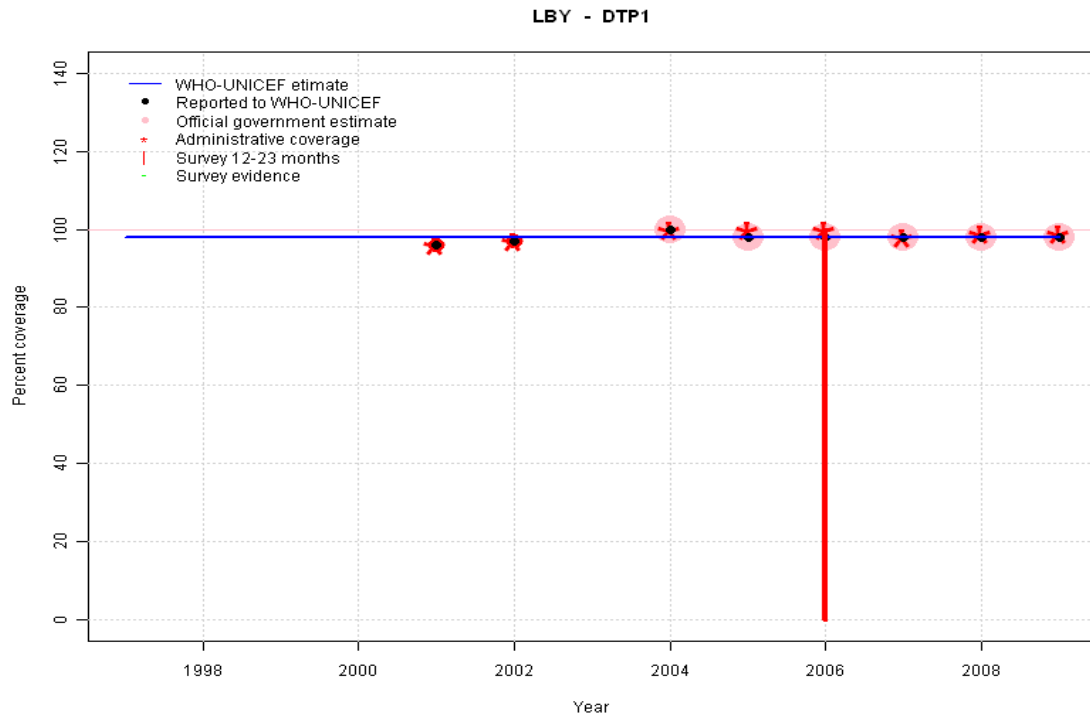


- 1997: Legacy estimate.
- 1998: Estimate based on reported data.
- 1999: Estimate based on reported data.
- 2000: Estimate based on trend in reported data. Missing or ignored reported value estimated by interpolation between reported values of 97 percent in 1999 and 99 percent in 2001.
- 2001: Estimate based on reported data.
- 2002: Estimate based on reported data.
- 2003: Estimate based on trend in reported data. Missing or ignored reported value estimated by interpolation between reported values of 99 percent in 2002 and 100 percent in 2004.
- 2004: Estimate based on reported data.
- 2005: Estimate based on reported data.
- 2006: Estimate based on reported data (99 percent) confirmed by survey (99 percent).
- 2007: Estimate based on reported data.
- 2008: Estimate based on reported data.
- 2009: Estimate based on reported data.

	1997	1998	1999	2000	2001	2002	2003	2004	2005	2006	2007	2008	2009
Estimate	97	97	97	98	99	99	99	99	99	99	99	99	99
Reported	97	97	97	NA	99	99	NA	100	100	100	100	100	100
Official	NA	NA	97	NA	NA	NA	NA	100	100	100	100	100	100
Administrative	NA	NA	NA	NA	99	99	NA	100	100	100	100	100	100
Survey	NA	NA	NA	NA	NA	NA	NA	NA	NA	99	NA	NA	NA

# Libyan Arab Jamahiriya - DTP1

## Description:

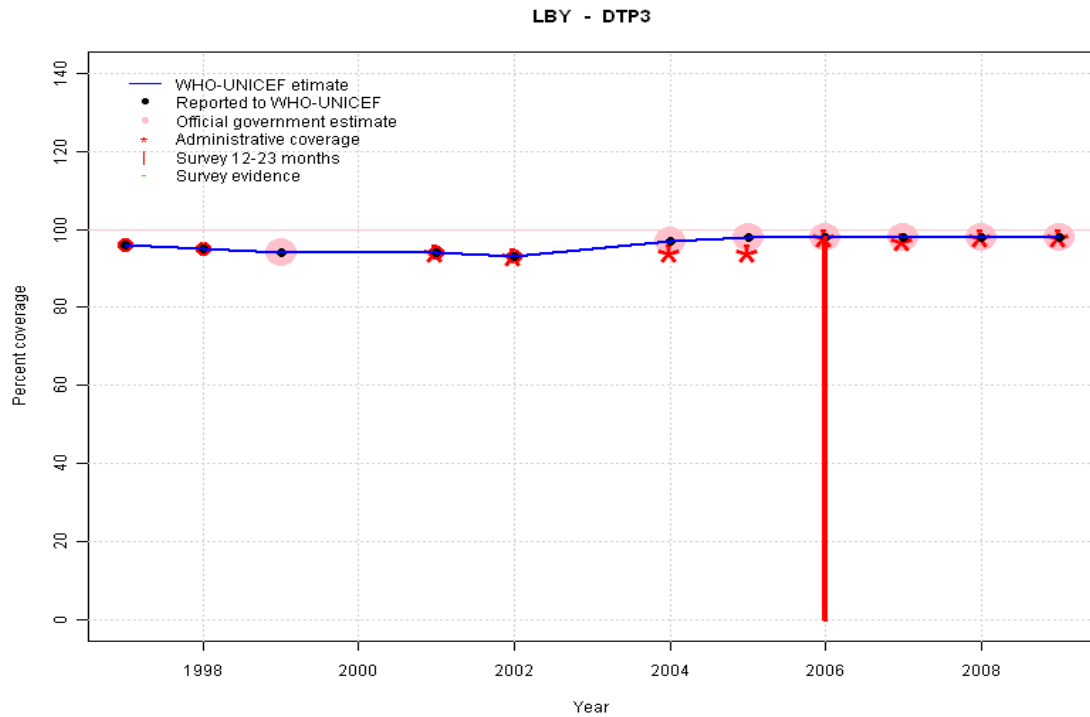


- 1997: Legacy estimate.
- 1998: Estimate interpolated between 1997 and 2006 estimates.
- 1999: Estimate interpolated between 1997 and 2006 estimates.
- 2000: Estimate interpolated between 1997 and 2006 estimates.
- 2001: Estimate interpolated between 1997 and 2006 estimates.
- 2002: Estimate interpolated between 1997 and 2006 estimates.
- 2003: Estimate interpolated between 1997 and 2006 estimates.
- 2004: Estimate interpolated between 1997 and 2006 estimates.
- 2005: Estimate interpolated between 1997 and 2006 estimates.
- 2006: Estimate based on reported data (98 percent) confirmed by survey (99 percent).
- 2007: Estimate based on reported data.
- 2008: Estimate based on reported data.
- 2009: Estimate based on reported data.

	1997	1998	1999	2000	2001	2002	2003	2004	2005	2006	2007	2008	2009
Estimate	98	98	98	98	98	98	98	98	98	98	98	98	98
Reported	NA	NA	NA	NA	96	97	NA	100	98	98	98	98	98
Official	NA	NA	NA	NA	NA	NA	NA	100	98	98	98	98	98
Administrative	NA	NA	NA	NA	96	97	NA	100	100	100	98	99	99
Survey	NA	NA	NA	NA	NA	NA	NA	NA	NA	99	NA	NA	NA

# Libyan Arab Jamahiriya - DTP3

## Description:

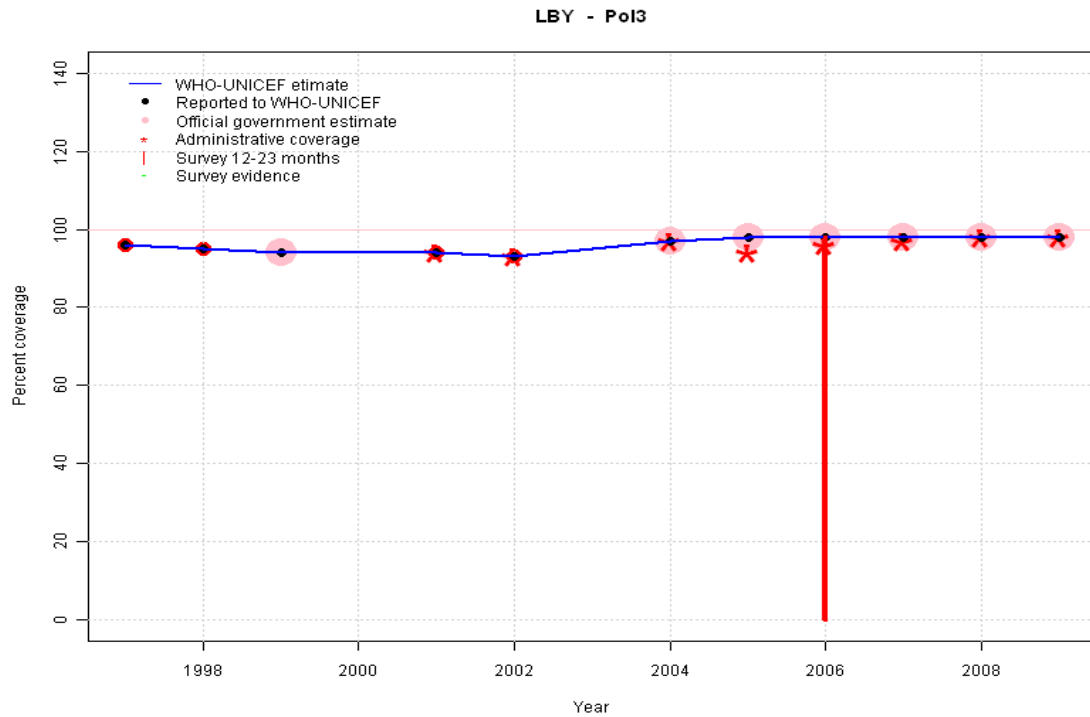


- 1997: Legacy estimate.
- 1998: Estimate based on reported data.
- 1999: Estimate based on reported data.
- 2000: Estimate based on trend in reported data. Missing or ignored reported value estimated by interpolation between reported values of 94 percent in 1999 and 94 percent in 2001.
- 2001: Estimate based on reported data.
- 2002: Estimate based on reported data.
- 2003: Estimate based on trend in reported data. Missing or ignored reported value estimated by interpolation between reported values of 93 percent in 2002 and 97 percent in 2004.
- 2004: Estimate based on reported data.
- 2005: Estimate based on reported data.
- 2006: Estimate based on reported data (98 percent) confirmed by survey (98 percent).
- 2007: Estimate based on reported data.
- 2008: Estimate based on reported data.
- 2009: Estimate based on reported data.

	1997	1998	1999	2000	2001	2002	2003	2004	2005	2006	2007	2008	2009
Estimate	96	95	94	94	94	93	95	97	98	98	98	98	98
Reported	96	95	94	NA	94	93	NA	97	98	98	98	98	98
Official	NA	NA	94	NA	NA	NA	NA	97	98	98	98	98	98
Administrative	NA	NA	NA	NA	94	93	NA	94	94	98	97	98	98
Survey	NA	NA	NA	NA	NA	NA	NA	NA	NA	98	NA	NA	NA

# Libyan Arab Jamahiriya - Pol3

## Description:

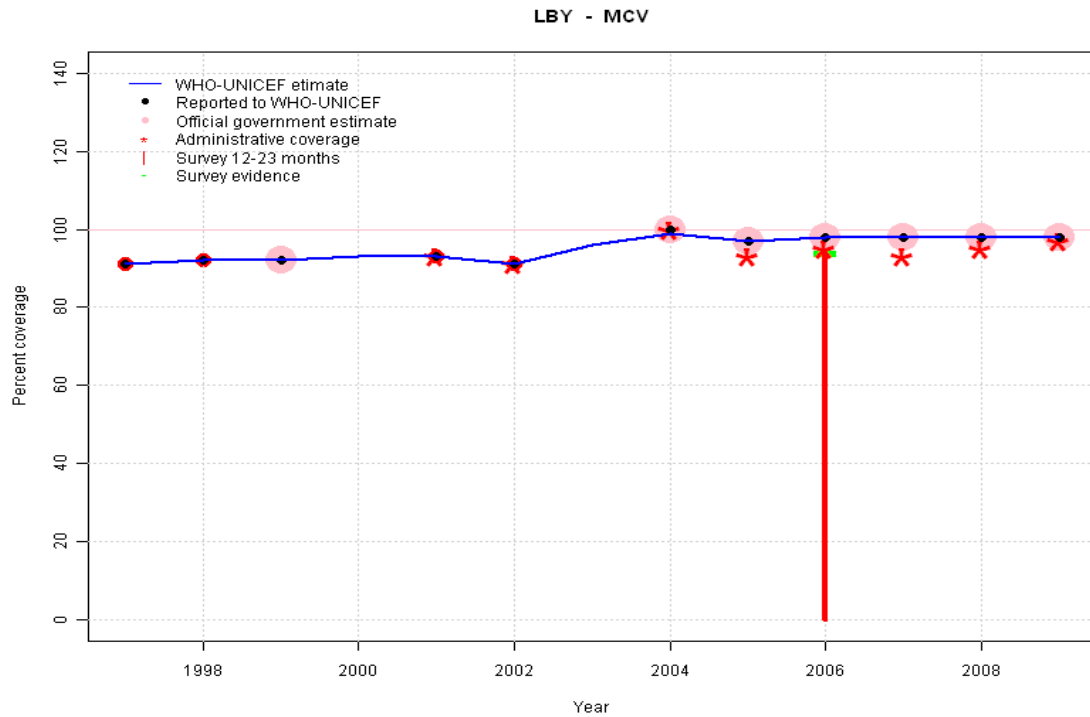


- 1997: Legacy estimate.
- 1998: Estimate based on reported data.
- 1999: Estimate based on reported data.
- 2000: Estimate based on trend in reported data. Missing or ignored reported value estimated by interpolation between reported values of 94 percent in 1999 and 94 percent in 2001.
- 2001: Estimate based on reported data.
- 2002: Estimate based on reported data.
- 2003: Estimate based on trend in reported data. Missing or ignored reported value estimated by interpolation between reported values of 93 percent in 2002 and 97 percent in 2004.
- 2004: Estimate based on reported data.
- 2005: Estimate based on reported data.
- 2006: Estimate based on reported data (98 percent) confirmed by survey (98 percent).
- 2007: Estimate based on reported data.
- 2008: Estimate based on reported data.
- 2009: Estimate based on reported data.

	1997	1998	1999	2000	2001	2002	2003	2004	2005	2006	2007	2008	2009
Estimate	96	95	94	94	94	93	95	97	98	98	98	98	98
Reported	96	95	94	NA	94	93	NA	97	98	98	98	98	98
Official	NA	NA	94	NA	NA	NA	NA	97	98	98	98	98	98
Administrative	NA	NA	NA	NA	94	93	NA	97	94	96	97	98	98
Survey	NA	NA	NA	NA	NA	NA	NA	NA	NA	98	NA	NA	NA

# Libyan Arab Jamahiriya - MCV

## Description:

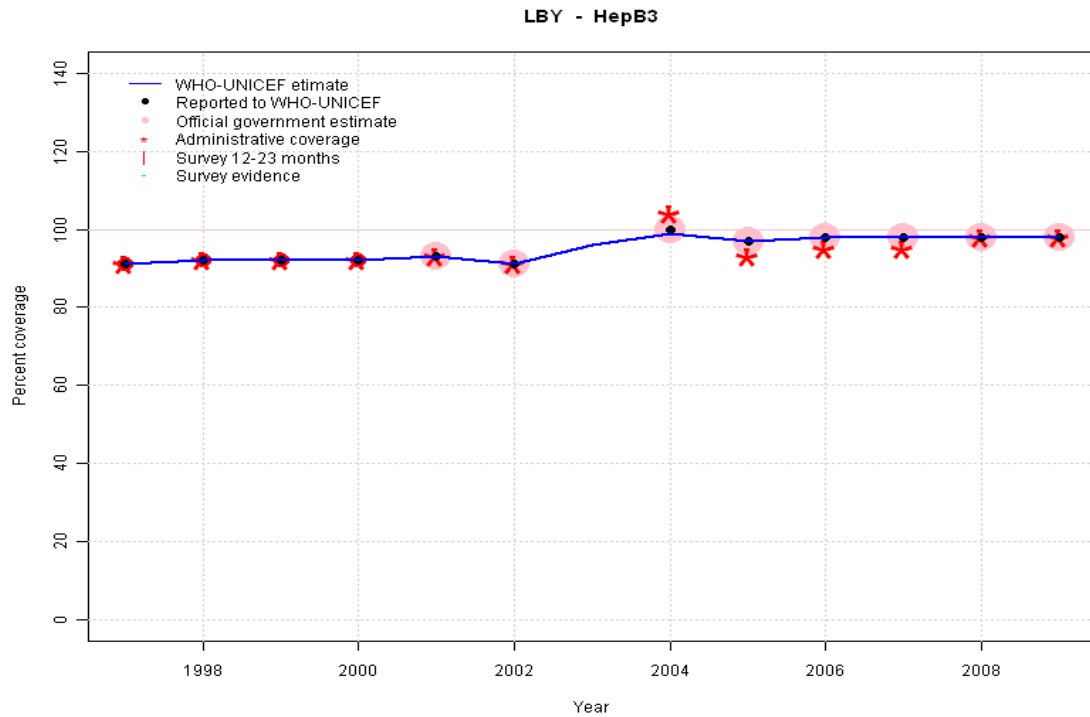


- 1997: Legacy estimate.
- 1998: Estimate based on reported data.
- 1999: Estimate based on reported data.
- 2000: Estimate based on trend in reported data. Missing or ignored reported value estimated by interpolation between reported values of 92 percent in 1999 and 93 percent in 2001.
- 2001: Estimate based on reported data.
- 2002: Estimate based on reported data.
- 2003: Estimate based on trend in reported data. Missing or ignored reported value estimated by interpolation between reported values of 91 percent in 2002 and 100 percent in 2004.
- 2004: Estimate based on reported data.
- 2005: Estimate based on reported data.
- 2006: Estimate based on reported data (98 percent) confirmed by survey (94 percent).
- 2007: Estimate based on reported data.
- 2008: Estimate based on reported data.
- 2009: Estimate based on reported data.

	1997	1998	1999	2000	2001	2002	2003	2004	2005	2006	2007	2008	2009
Estimate	91	92	92	93	93	91	96	99	97	98	98	98	98
Reported	91	92	92	NA	93	91	NA	100	97	98	98	98	98
Official	NA	NA	92	NA	NA	NA	NA	100	97	98	98	98	98
Administrative	NA	NA	NA	NA	93	91	NA	100	93	95	93	95	97
Survey	NA	NA	NA	NA	NA	NA	NA	NA	NA	94	NA	NA	NA

# Libyan Arab Jamahiriya - HepB3

## Description:



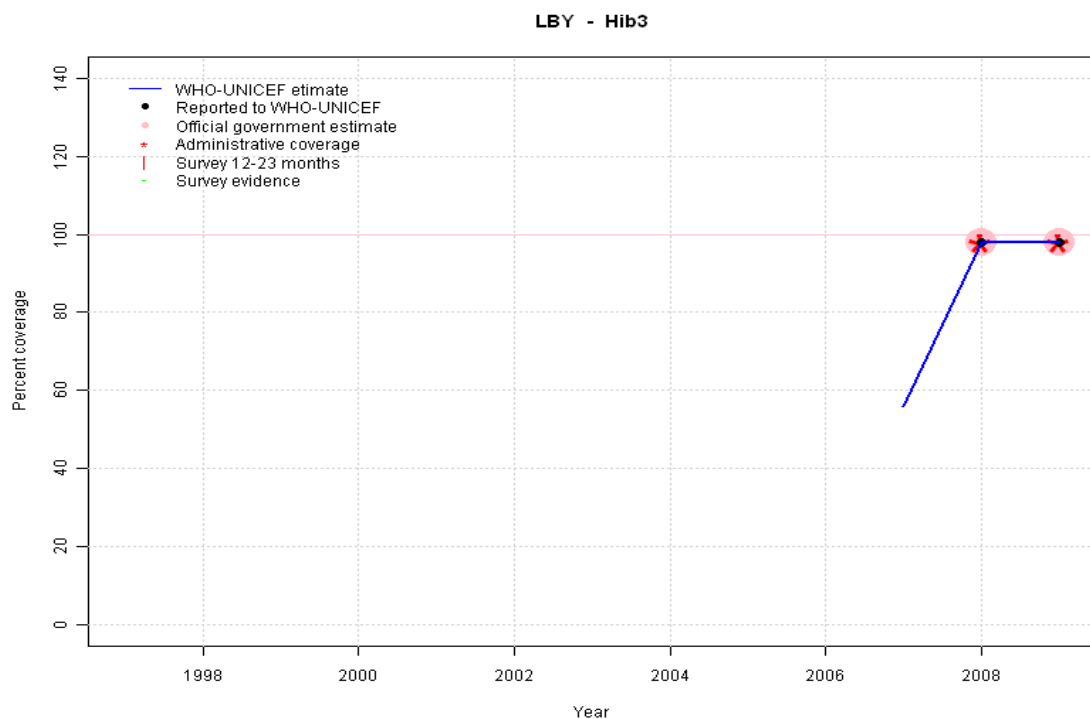
- 1997: Legacy estimate.
- 1998: Estimate based on reported data.
- 1999: Estimate based on reported data.
- 2000: Estimate based on reported data.
- 2001: Estimate based on reported data.
- 2002: Estimate based on reported data.
- 2003: Estimate based on trend in reported data. Missing or ignored reported value estimated by interpolation between reported values of 91 percent in 2002 and 100 percent in 2004.
- 2004: Estimate based on reported data.
- 2005: Estimate based on reported data.
- 2006: Estimate based on reported data.
- 2007: Estimate based on reported data.
- 2008: Estimate based on reported data.
- 2009: Estimate based on reported data.

	1997	1998	1999	2000	2001	2002	2003	2004	2005	2006	2007	2008	2009
Estimate	91	92	92	92	93	91	96	99	97	98	98	98	98
Reported	91	92	92	92	93	91	NA	100	97	98	98	98	98
Official	NA	NA	NA	NA	93	91	NA	100	97	98	98	98	98
Administrative	91	92	92	92	93	91	NA	104	93	95	95	98	98
Survey	NA	NA	NA	NA	NA	NA	NA	NA	NA	NA	NA	NA	NA

# Libyan Arab Jamahiriya - Hib3

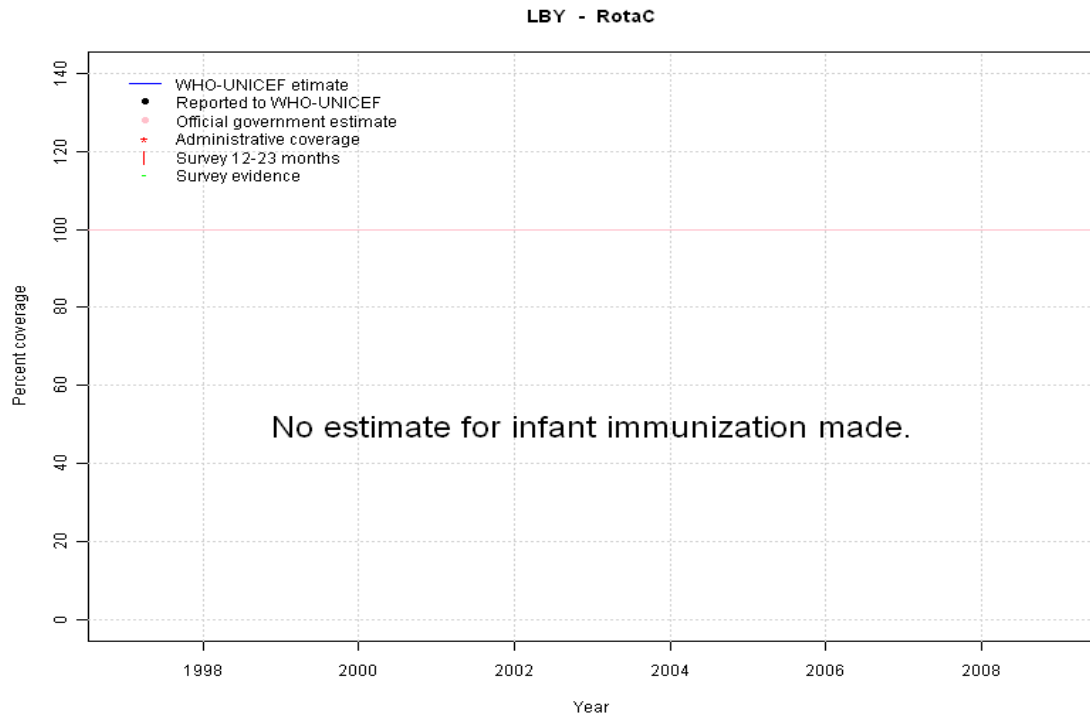
## Description:

2007: Estimate assigned by working group. Hib vaccine introduced in 2007. 94 percent coverage was achieved in 60 percent of the country. Hib introduced in 2007 Vaccine presentation is DTP-HepB-Hib.  
 2008: Estimate based on reported data.  
 2009: Estimate based on reported data.



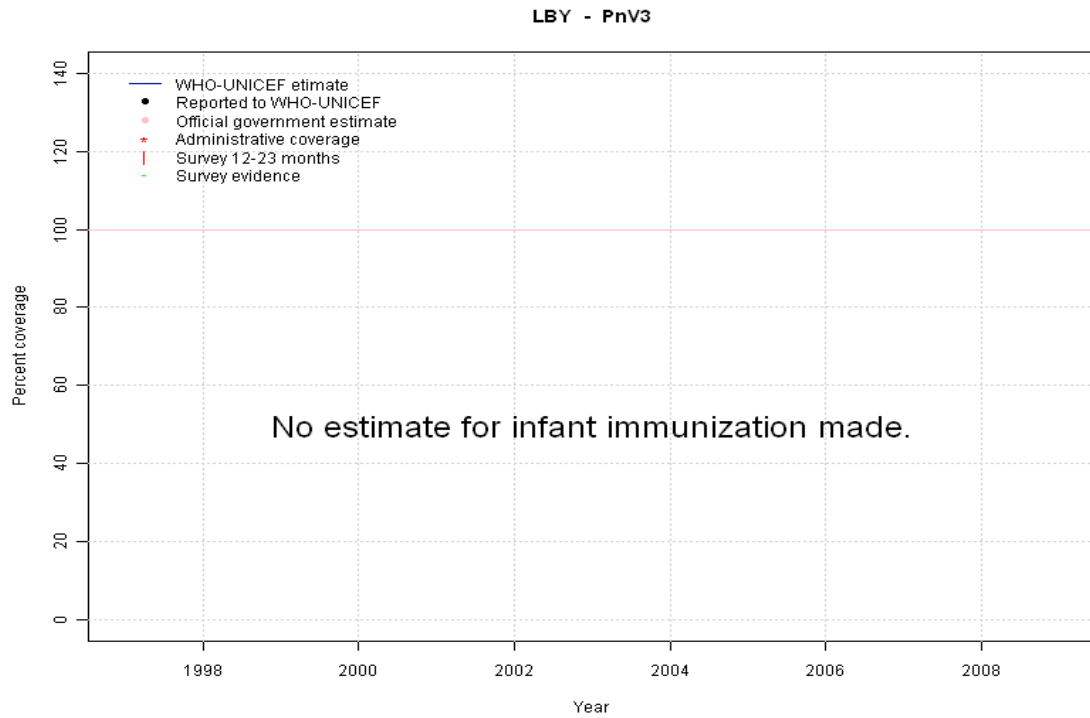
	1997	1998	1999	2000	2001	2002	2003	2004	2005	2006	2007	2008	2009
Estimate	NA	NA	NA	NA	NA	NA	NA	NA	NA	NA	56	98	98
Reported	NA	NA	NA	NA	NA	NA	NA	NA	NA	NA	NA	98	98
Official	NA	NA	NA	NA	NA	NA	NA	NA	NA	NA	NA	98	98
Administrative	NA	NA	NA	NA	NA	NA	NA	NA	NA	NA	NA	98	98
Survey	NA	NA	NA	NA	NA	NA	NA	NA	NA	NA	NA	NA	NA

# Libyan Arab Jamahiriya - RotaC



	1997	1998	1999	2000	2001	2002	2003	2004	2005	2006	2007	2008	2009
Estimate	NA	NA	NA	NA	NA	NA	NA	NA	NA	NA	NA	NA	NA
Reported	NA	NA	NA	NA	NA	NA	NA	NA	NA	NA	NA	NA	NA
Official	NA	NA	NA	NA	NA	NA	NA	NA	NA	NA	NA	NA	NA
Administrative	NA	NA	NA	NA	NA	NA	NA	NA	NA	NA	NA	NA	NA
Survey	NA	NA	NA	NA	NA	NA	NA	NA	NA	NA	NA	NA	NA

# Libyan Arab Jamahiriya - PnV3



	1997	1998	1999	2000	2001	2002	2003	2004	2005	2006	2007	2008	2009
Estimate	NA	NA	NA	NA	NA	NA	NA	NA	NA	NA	NA	NA	NA
Reported	NA	NA	NA	NA	NA	NA	NA	NA	NA	NA	NA	NA	NA
Official	NA	NA	NA	NA	NA	NA	NA	NA	NA	NA	NA	NA	NA
Administrative	NA	NA	NA	NA	NA	NA	NA	NA	NA	NA	NA	NA	NA
Survey	NA	NA	NA	NA	NA	NA	NA	NA	NA	NA	NA	NA	NA

