



WHO / UNICEF

**Joint Monitoring Programme
for Water Supply and Sanitation**

Coverage Estimates
Improved Sanitation

Updated in July 2008

Lesotho

Urban and Rural Sanitation

Survey

MICS 1996			
SANITATION	Urban	Rural	Total
Flush to sewerage	8.0	0.0	2.0
Flush to septic tank	2.0	2.0	2.0
Pour flush latrine	0.0	0.0	0.0
VIP latrine	36.0	20.0	22.0
Ventilated latrine	11.0	14.0	13.0
Ordinary pit latrine*	36.0	56.0	54.0
No facilities	8.0	9.0	8.0
TOTAL	101.0	101.0	101.0
Access to improved sanitation	56%	36%	39%
% Sewerage connections	8%	0%	2%

Source: Kingdom of Lesotho MDG, 1996

*Identified as "inadequate" in the report

MICS 2000			
SANITATION	Urban	Rural	Total
Flush to sewerage/septic tank	4.7	0.4	1.3
Pour flush latrine	2.3	0.1	0.6
Improved pit latrine	36.9	12.5	17.8
Traditional pit latrine	44.0	31.2	34.0
Open pit	1.2	3.0	2.6
Bucket	0.0	0.0	0.0
Other	0.7	4.4	3.6
No facilities/bush/field	10.2	48.4	40.1
TOTAL	100.0	100.0	100.0
* Traditional pit latrines considered to be improved based on ratio CWIQ 2002	33.7	23.9	26.1
Estimated sewerage connections based on ratio CWIQ02	1.5	0.1	0.4
Access to improved sanitation	78%	37%	46%
% Sewerage connections	2%	0%	0%

Source: 2000 End decade MICS, draft preliminary report, June 26, 2001

CWIQ 2002			
SANITATION	Urban	Rural	Total
Flush to sewerage			0.9
Flush to septic tank			1.9
Improved pit latrine			19.8
Covered pit latrine			25.0
Uncovered pit latrine			7.6
Bucket			0.0
Other			5.0
No facilities/bush/field			39.9
TOTAL			100.1
ratio covered pit latrines all pit latrines			0.77
ratio flush to sewerage			0.32
Access to improved sanitation			23%
% Sewerage connections			1%

Lesotho Core Welfare Indicator Questionnaire Surveys, 2002

1 - Lesotho

Estimate

DHS		2004		
facilities	0.47	0.13		
SANITATION	Urban	Rural	Total	
Flush toilet	7.7	0.2	2.0	
VIP latrine	40.7	15.7	21.6	
Traditional pit toilet	44.4	29.7	33.2	
Other/missing	0.1	0.1	0.1	
No facilities/bush/field	7.1	54.4	43.2	
TOTAL	100.0	100.1	100.1	
* Traditional pit latrines considered to be improved based on ratio CWIQ 2002	34.0	22.8	25.5	
Estimated sewerage connections based on ratio CWIQ02	2.5	0.1	0.6	
Use of an improved sanitation facility	82%	39%	49%	
% Sewerage connections	2%	0%	1%	

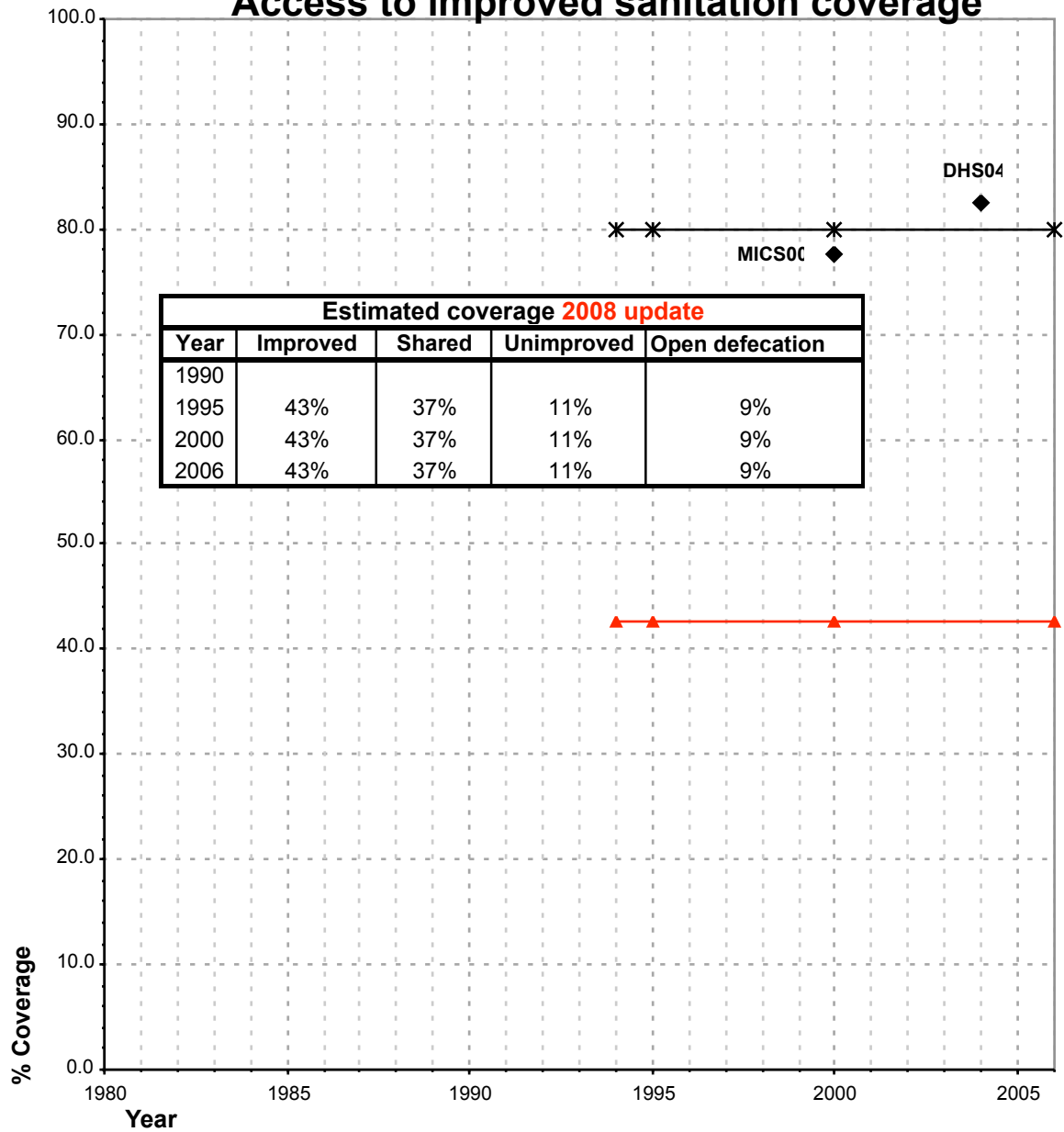
Lesotho Demographic and Health Survey, 2004

FORM6/WHO		1999	
(Population in thousands)			
SANITATION	Urban	Rural	
Population served with household connections to conventional sewers	16.7	NO DATA SENT	
Population without household connections but served with adequate, private or shared on-site system	19.4		
Total population served	36.9		
Total population unserved	378.0		
Total population	414.87		
Access to improved sanitation	9%		
% House connections	4%		

Source: Global Water Supply and Sanitation Assessment 2000. Water Supply and

Lesotho			SANITATION								OPEN DEFECACTION			
			URBAN				RURAL							
			HC	Total		HC	Total		Urban		Rural			
Source	Code	Year	Used for estimates	Not used for estimates	Used for estimates	Not used for estimates	Used for estimates	Not used for estimates	Used for estimates	Not used for estimates	Used for estimates	Not used for estimates	Used for estimates	Not used for estimates
The International Drinking Water Supply and Sanitation Decade. Review of National Baseline Data (as at December 1980). WHO 1984	WHO80	1980		10.0		13.0				14.0				
The International Drinking Water Supply and Sanitation Decade. Review of Mid-Decade Progress (as at December 1985). WHO 1987.	WHO85	1985		12.0		22.0				14.0				
The International Drinking Water Supply and Sanitation Decade. Review of National Progress (as at December 1988). WHO 1990.	WHO88	1988		11.0		14.0				23.0				
Water Supply and Sanitation Sector Monitoring Report - 1996. Sector Status as of 31 December 1994. WHO/UNICEF 1996.	JMP96	1993				1.0				7.0				
Kingdom of Lesotho MDG, 1996.	MICS96	1996	8.0			56.4	0.0		35.6			8.0		9.0
Global Water Supply and Sanitation Assessment 2000. Water Supply and Sanitation Sector Questionnaire - 1999. (Form 6 sent to WHO)	JMP99	1999		4.0		9.0								
Kingdom of Lesotho, 2000 End decade multiple indicator cluster survey (EMICS)	MICS00	2000	1.5		77.6		0.1		36.9		10.2		48.4	
Lesotho Core Welfare Indicator Questionnaire Surveys, 2002	CWIQ02	2002												
Lesotho, Demographic and Health Survey, 2004	DHS04	2004	2.5		82.4		0.1		38.7		7.1		54.4	

Lesotho - urban - Access to improved sanitation coverage



Improved plus shared

Improved

◆ Used for estimates

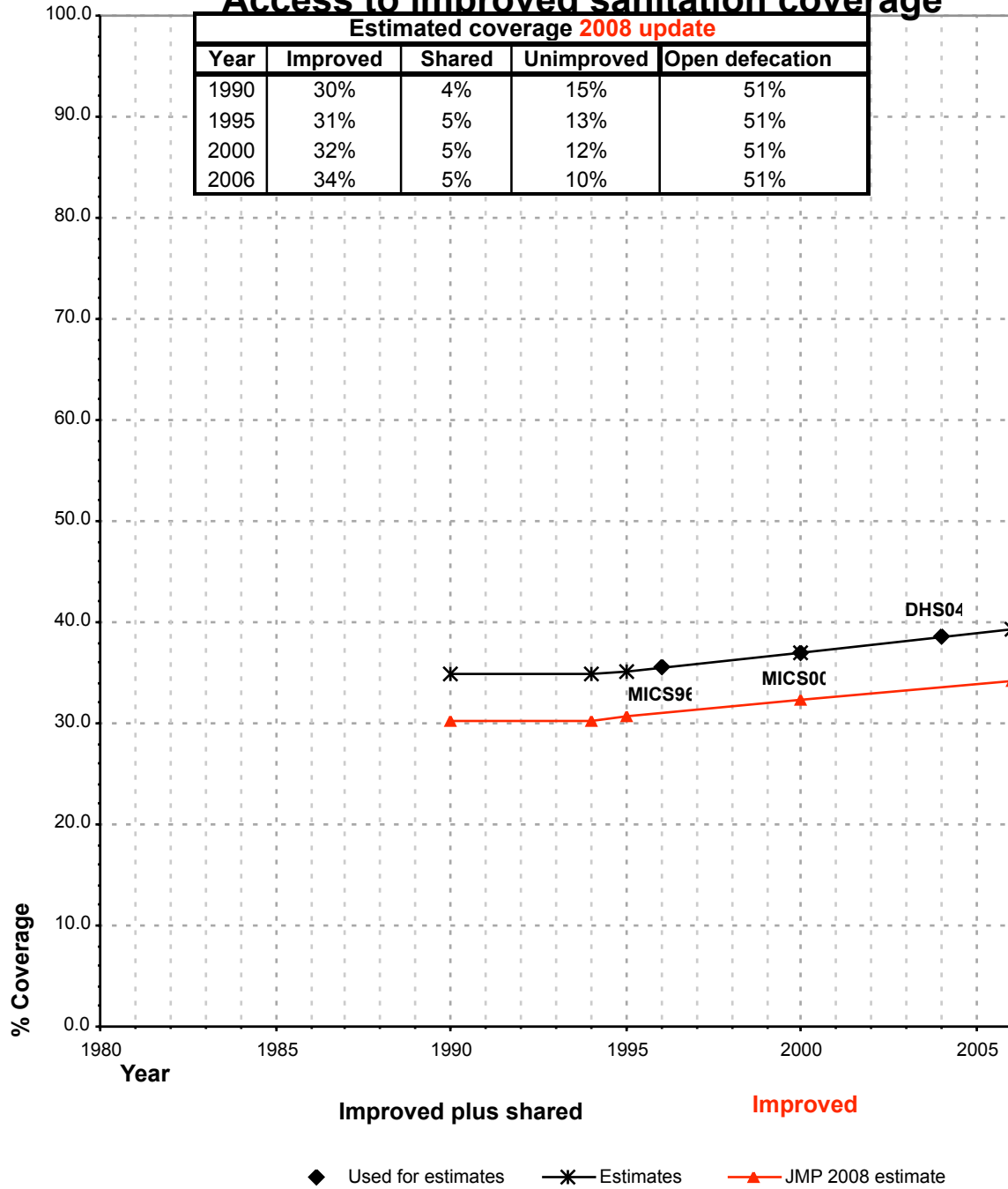
✱ Estimates

▲ JMP 2008 estimate

Shared facilities:

The proportion of the population using a shared improved sanitation facility is based on the DHS04

Lesotho - rural - Access to improved sanitation coverage



Shared facilities:
The proportion of the population using a shared improved sanitation facility is based on the DHS04