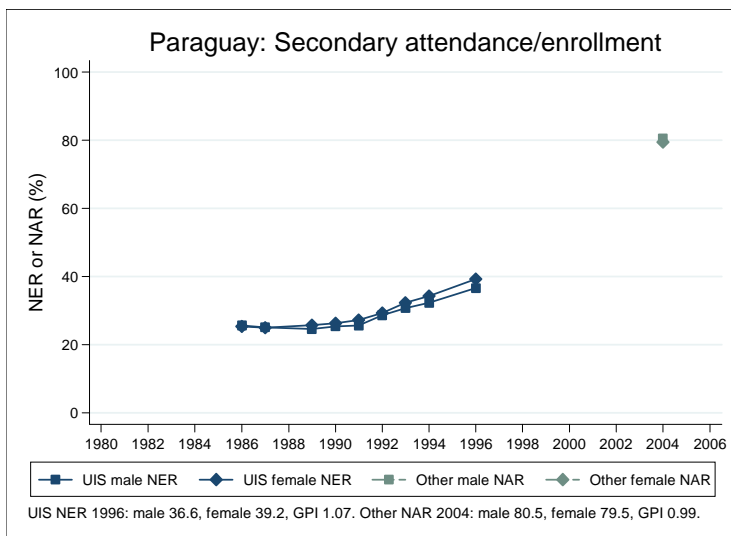
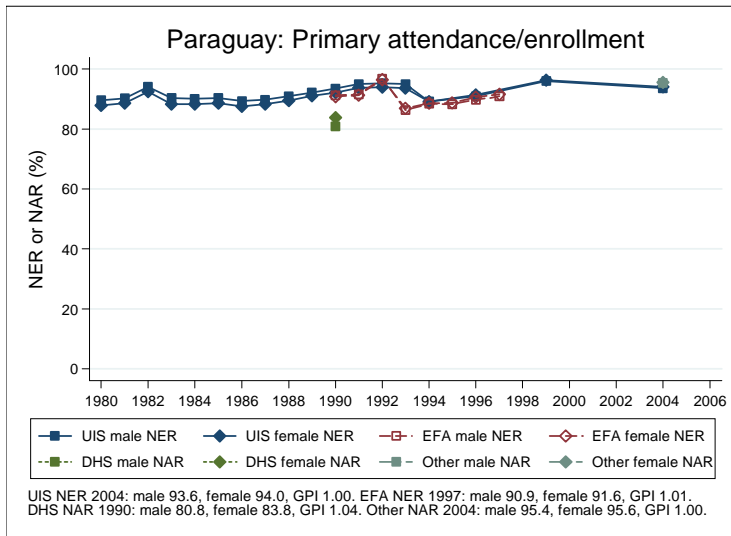
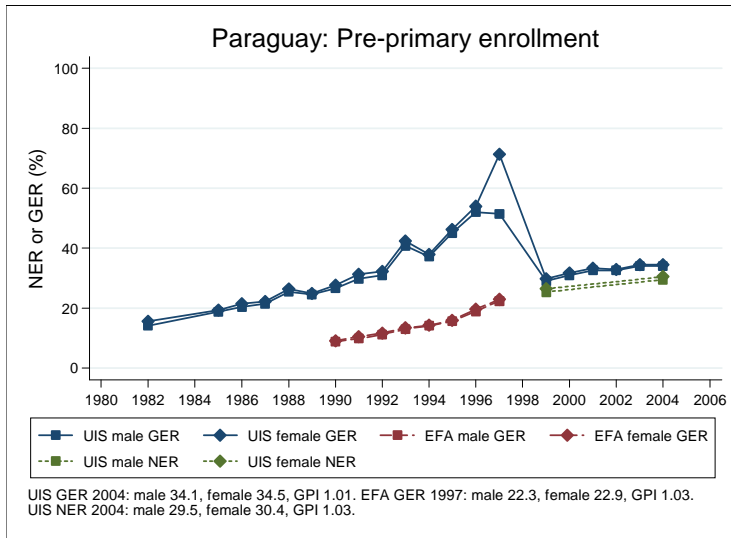
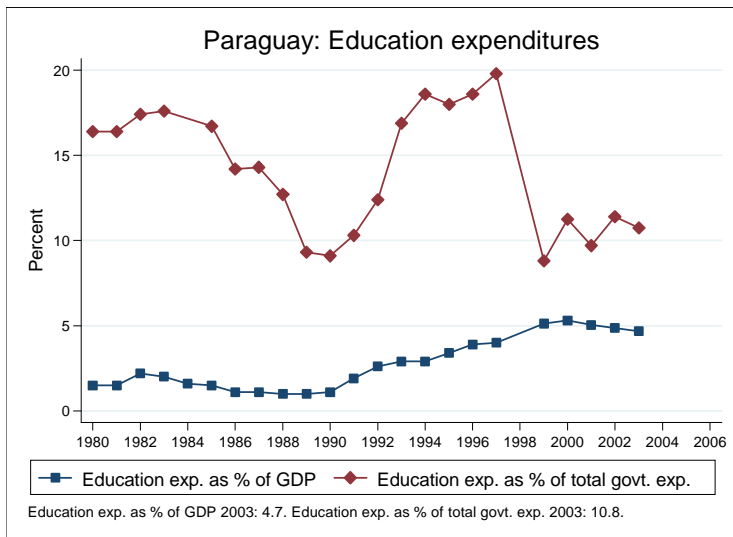
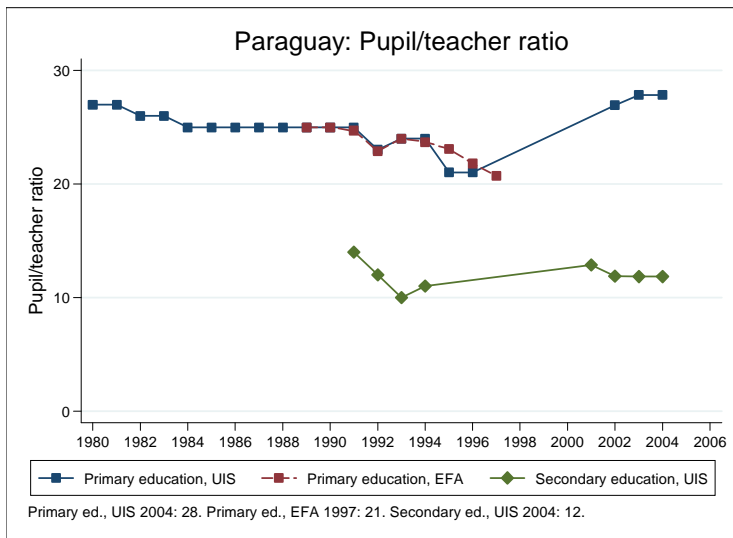
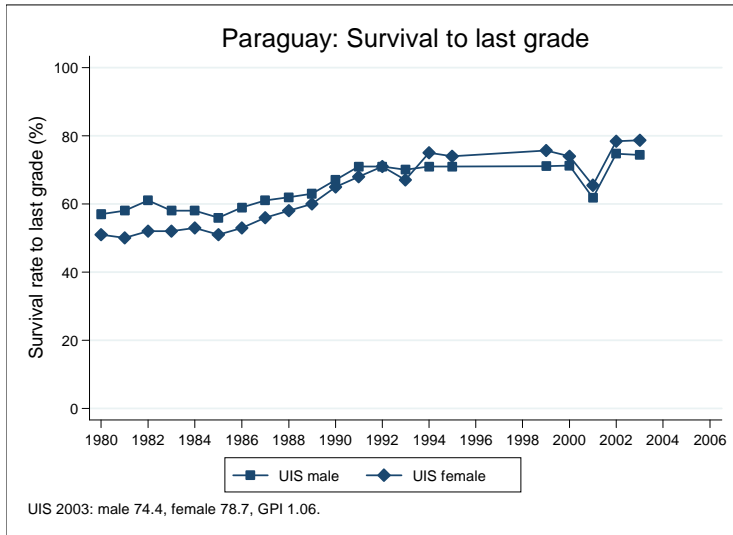


## Education statistics: Paraguay

UNICEF, Division of Policy and Practice, Statistics and Monitoring Section, www.childinfo.org, May 2008





## Administrative data: UNESCO Institute for Statistics

### Paraguay

<b>Population (1,000)</b>	<b>Total</b>	<b>Male</b>	<b>Female</b>
Preschool age, 2006	434	221	213
Primary school age, 2006	844	429	415
Secondary school age, 2006	803	408	395
Total population, all ages, 2007	6127	3096	3031
<b>Official school age (years)</b>	<b>Entrance age</b>	<b>Graduation age</b>	<b>Duration</b>
Preschool, 2005	3	5	3
Primary school, 2005	6	11	6
Secondary school, 2005	12	17	6
Compulsory education, 2005	6	14	9
<b>Net enrolment ratio (%)</b>	<b>Total</b>	<b>Male</b>	<b>Female</b>
Preschool NER, 2004	29.9	29.5	30.4
Primary school NER, 2004	93.8	93.6	94.0
Secondary school NER, 1991	26.3	25.6	27.0
<b>Gross enrolment ratio (%)</b>	<b>Total</b>	<b>Male</b>	<b>Female</b>
Preschool GER, 2004	34.3	34.1	34.5
Primary school GER, 2004	111.7	113.4	109.9
Secondary school GER, 2004	66.7	66.0	67.3
<b>Entrance and transition (%)</b>	<b>Total</b>	<b>Male</b>	<b>Female</b>
Primary net intake rate, 1991	72.1	72.8	71.4
Primary gross intake rate, 2004	115.8	117.2	114.3
Primary entrants with ECCE, 2004	75.2	74.0	76.4
Transition rate primary-secondary, 2003	90.3	90.3	90.3
<b>Repetition and completion</b>	<b>Total</b>	<b>Male</b>	<b>Female</b>
Primary repetition rate (%), 2004	6.7	7.9	5.4
Secondary repetition rate (%), 2004	0.9	1.2	0.6
Survival rate to grade 5 (%), 2003	81.2	79.4	83.3
Survival rate to last primary grade (%), 2003	76.5	74.4	78.7
Primary completion rate (%), 2004	94.4	93.6	95.3
School life expectancy (years), 2004	10.8	10.9	10.7
<b>Teaching staff</b>	<b>Pupil/teacher ratio</b>	<b>% trained teachers</b>	<b>% female teachers</b>
Preschool, 2004	26.0		88.3
Primary school, 2004	27.8		72.4
Secondary school, 2004	11.8		62.2
<b>Public expenditure per student as % of GDP per capita</b>			
Primary school, 2003	13.2		
Secondary school, 2003	14.8		
<b>Total public expenditure on education</b>			
As % of GDP, 2003	4.7		
As % of total government expenditure, 2003	10.8		

#### Data sources:

*Population:* United Nations Population Division, *World Population Prospects: The 2006 Revision*, March 2007.

*Education:* UNESCO Institute for Statistics, Data Centre, <http://stats.uis.unesco.org/unesco/ReportFolders/ReportFolders.aspx>, January 2008.