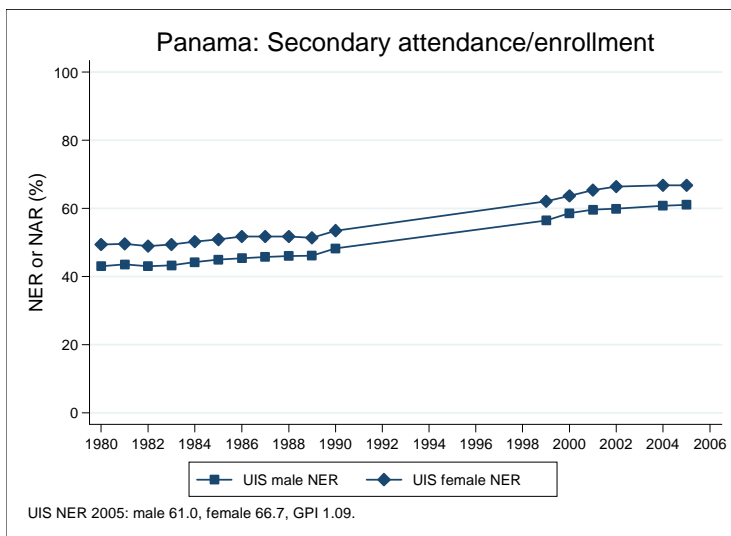
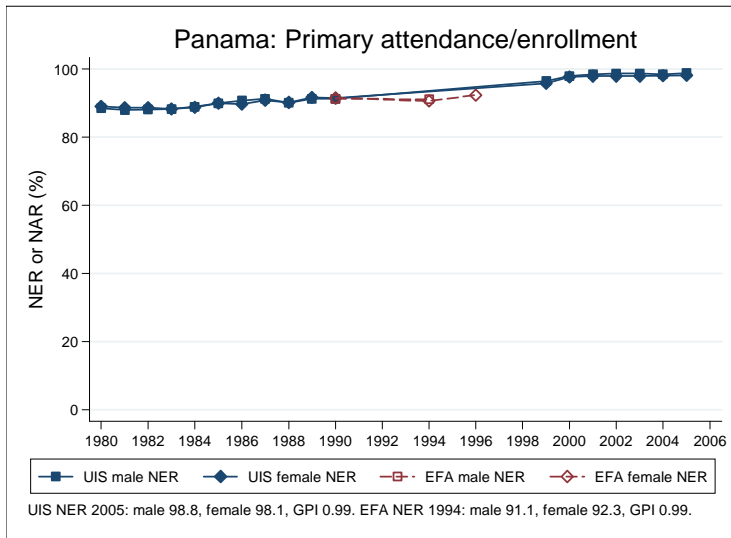
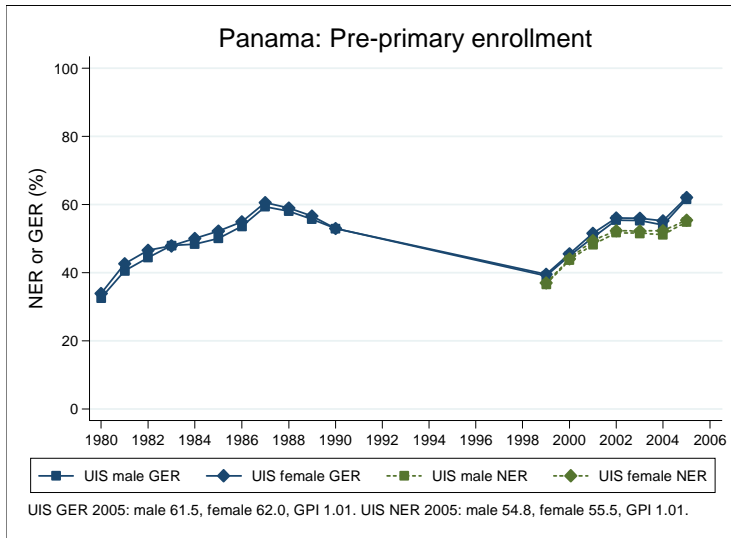
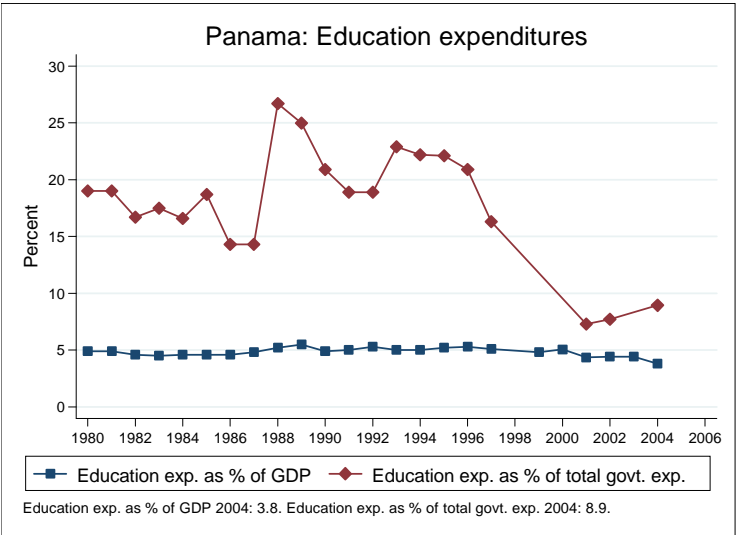
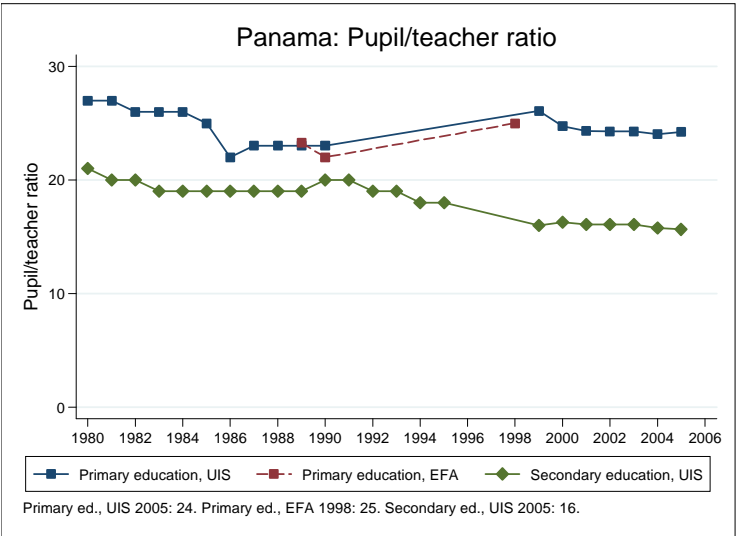
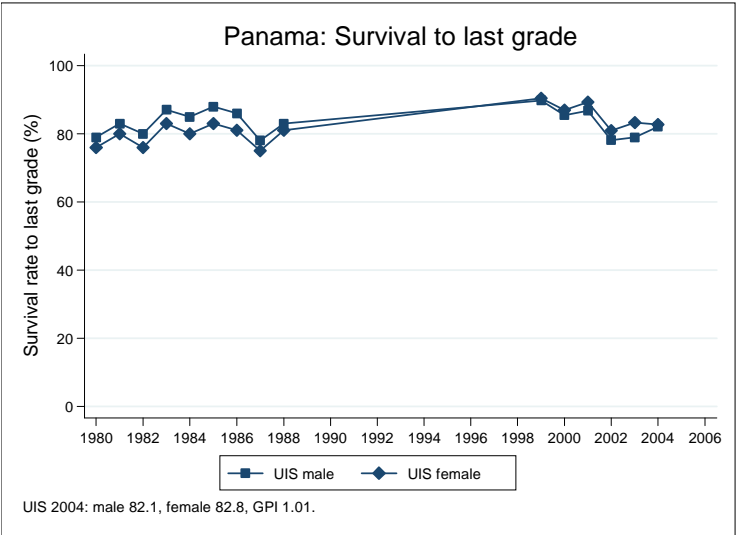


Education statistics: Panama

UNICEF, Division of Policy and Practice, Statistics and Monitoring Section, www.childinfo.org, May 2008





Administrative data: UNESCO Institute for Statistics

Panama

| Population (1,000) | Total | Male | Female |
|--|----------------------------|---------------------------|--------------------------|
| Preschool age, 2006 | 137 | 70 | 67 |
| Primary school age, 2006 | 392 | 200 | 192 |
| Secondary school age, 2006 | 368 | 188 | 180 |
| Total population, all ages, 2007 | 3343 | 1686 | 1657 |
| Official school age (years) | Entrance age | Graduation age | Duration |
| Preschool, 2005 | 4 | 5 | 2 |
| Primary school, 2005 | 6 | 11 | 6 |
| Secondary school, 2005 | 12 | 17 | 6 |
| Compulsory education, 2005 | 6 | 11 | 6 |
| Net enrolment ratio (%) | Total | Male | Female |
| Preschool NER, 2005 | 55.2 | 54.8 | 55.5 |
| Primary school NER, 2005 | 98.5 | 98.8 | 98.1 |
| Secondary school NER, 2005 | 63.8 | 61.0 | 66.7 |
| Gross enrolment ratio (%) | Total | Male | Female |
| Preschool GER, 2005 | 61.8 | 61.5 | 62.0 |
| Primary school GER, 2005 | 111.0 | 112.6 | 109.3 |
| Secondary school GER, 2005 | 70.2 | 67.8 | 72.7 |
| Entrance and transition (%) | Total | Male | Female |
| Primary net intake rate, 2004 | 87.9 | 87.1 | 88.7 |
| Primary gross intake rate, 2005 | 109.6 | 110.4 | 108.7 |
| Primary entrants with ECCE, 2005 | 67.4 | 66.3 | 68.5 |
| Transition rate primary-secondary, 2004 | 64.6 | 63.7 | 65.5 |
| Repetition and completion | Total | Male | Female |
| Primary repetition rate (%), 2005 | 5.6 | 6.6 | 4.6 |
| Secondary repetition rate (%), 2005 | 4.9 | 6.2 | 3.7 |
| Survival rate to grade 5 (%), 2004 | 85.3 | 85.0 | 85.7 |
| Survival rate to last primary grade (%), 2004 | 82.4 | 82.1 | 82.8 |
| Primary completion rate (%), 2005 | 96.6 | 96.7 | 96.6 |
| School life expectancy (years), 2005 | 10.9 | 10.9 | 11.0 |
| Teaching staff | Pupil/teacher ratio | % trained teachers | % female teachers |
| Preschool, 2005 | 19.8 | 48.0 | 95.5 |
| Primary school, 2005 | 24.2 | 89.6 | 76.4 |
| Secondary school, 2005 | 15.6 | 83.0 | 57.4 |
| Public expenditure per student as % of GDP per capita | | | |
| Primary school, 2004 | 9.7 | | |
| Secondary school, 2004 | 12.3 | | |
| Total public expenditure on education | | | |
| As % of GDP, 2004 | 3.8 | | |
| As % of total government expenditure, 2004 | 8.9 | | |

Data sources:

Population: United Nations Population Division, *World Population Prospects: The 2006 Revision*, March 2007.

Education: UNESCO Institute for Statistics, Data Centre, <http://stats.uis.unesco.org/unesco/ReportFolders/ReportFolders.aspx>, January 2008.