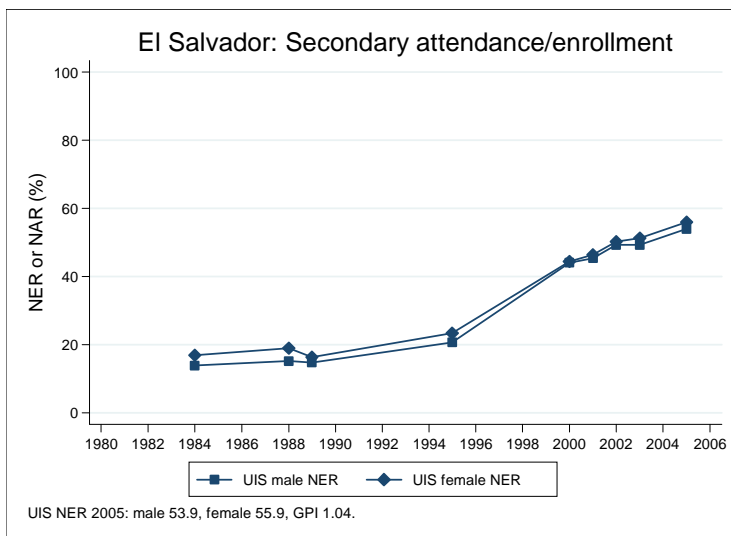
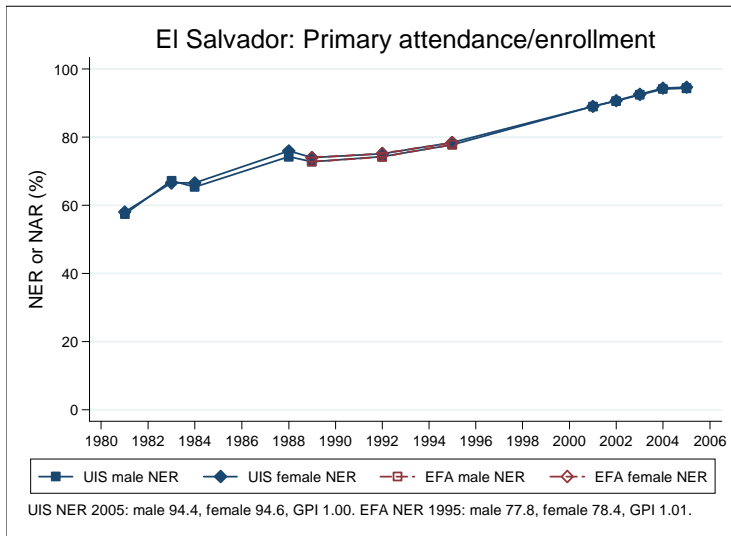
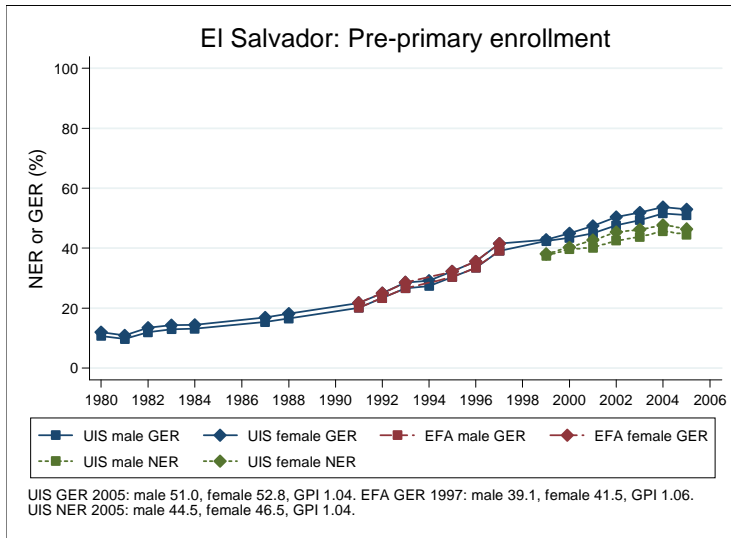
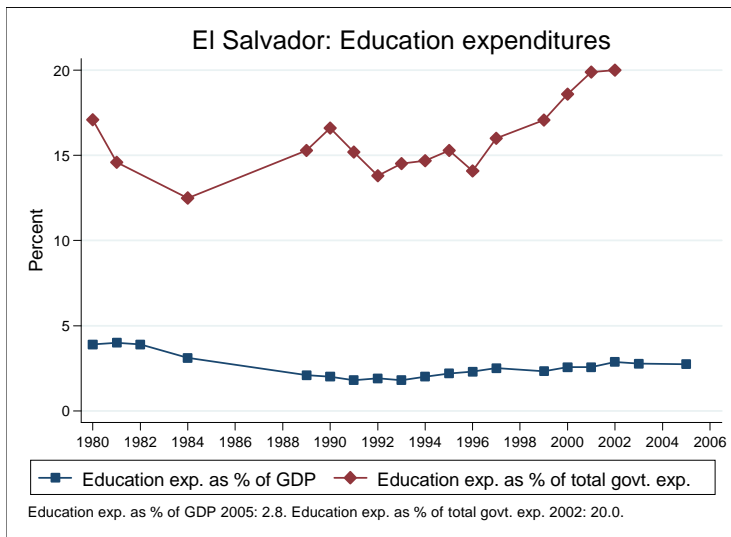
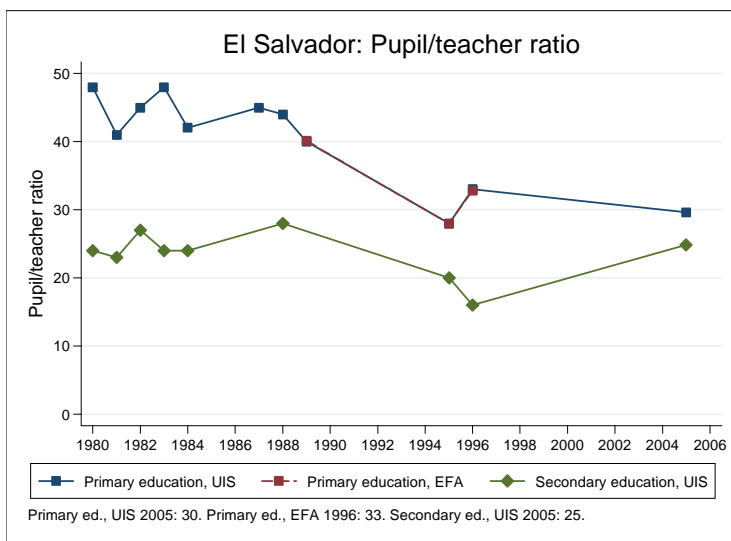
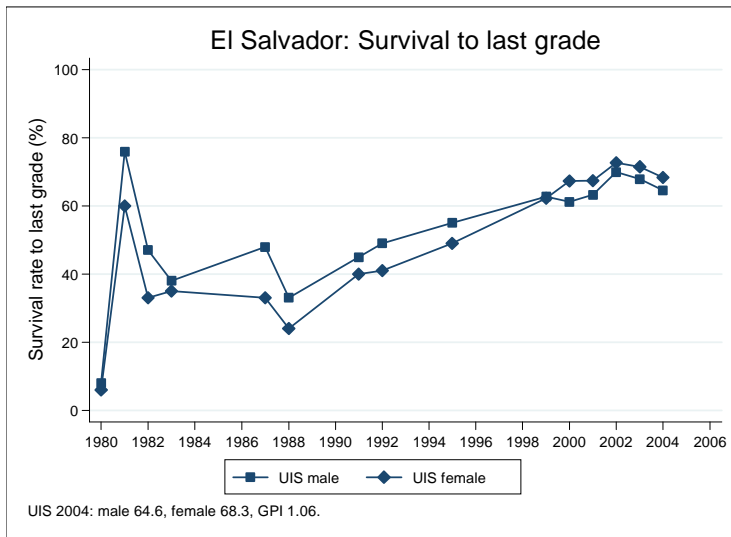


## Education statistics: El Salvador

UNICEF, Division of Policy and Practice, Statistics and Monitoring Section, www.childinfo.org, May 2008





## Administrative data: UNESCO Institute for Statistics

### El Salvador

<b>Population (1,000)</b>	<b>Total</b>	<b>Male</b>	<b>Female</b>
Preschool age, 2006	466	238	228
Primary school age, 2006	908	462	446
Secondary school age, 2006	820	415	405
Total population, all ages, 2007	6857	3364	3493
<b>Official school age (years)</b>	<b>Entrance age</b>	<b>Graduation age</b>	<b>Duration</b>
Preschool, 2005	4	6	3
Primary school, 2005	7	12	6
Secondary school, 2005	13	18	6
Compulsory education, 2005	7	15	9
<b>Net enrolment ratio (%)</b>	<b>Total</b>	<b>Male</b>	<b>Female</b>
Preschool NER, 2005	45.5	44.5	46.5
Primary school NER, 2005	94.5	94.4	94.6
Secondary school NER, 2005	54.9	53.9	55.9
<b>Gross enrolment ratio (%)</b>	<b>Total</b>	<b>Male</b>	<b>Female</b>
Preschool GER, 2005	51.9	51.0	52.8
Primary school GER, 2005	115.9	118.0	113.7
Secondary school GER, 2005	64.8	64.1	65.6
<b>Entrance and transition (%)</b>	<b>Total</b>	<b>Male</b>	<b>Female</b>
Primary net intake rate, 2005	63.2	63.0	63.5
Primary gross intake rate, 2005	129.3	132.6	125.8
Primary entrants with ECCE			
Transition rate primary-secondary, 2004	92.9	92.8	93.0
<b>Repetition and completion</b>	<b>Total</b>	<b>Male</b>	<b>Female</b>
Primary repetition rate (%), 2005	6.4	7.4	5.3
Secondary repetition rate (%), 2005	3.5	4.5	2.5
Survival rate to grade 5 (%), 2004	69.4	67.2	71.8
Survival rate to last primary grade (%), 2004	66.4	64.6	68.3
Primary completion rate (%), 2005	88.7	88.3	89.2
School life expectancy (years), 2005	11.0	11.1	10.8
<b>Teaching staff</b>	<b>Pupil/teacher ratio</b>	<b>% trained teachers</b>	<b>% female teachers</b>
Preschool, 2005	27.3	100.0	88.3
Primary school, 2005	29.6	100.0	69.6
Secondary school, 2005	24.9	100.0	49.4
<b>Public expenditure per student as % of GDP per capita</b>			
Primary school, 2005	9.2		
Secondary school, 2005	10.5		
<b>Total public expenditure on education</b>			
As % of GDP, 2005	2.8		
As % of total government expenditure, 2002	20.0		

#### Data sources:

*Population:* United Nations Population Division, *World Population Prospects: The 2006 Revision*, March 2007.

*Education:* UNESCO Institute for Statistics, Data Centre, <http://stats.uis.unesco.org/unesco/ReportFolders/ReportFolders.aspx>, January 2008.