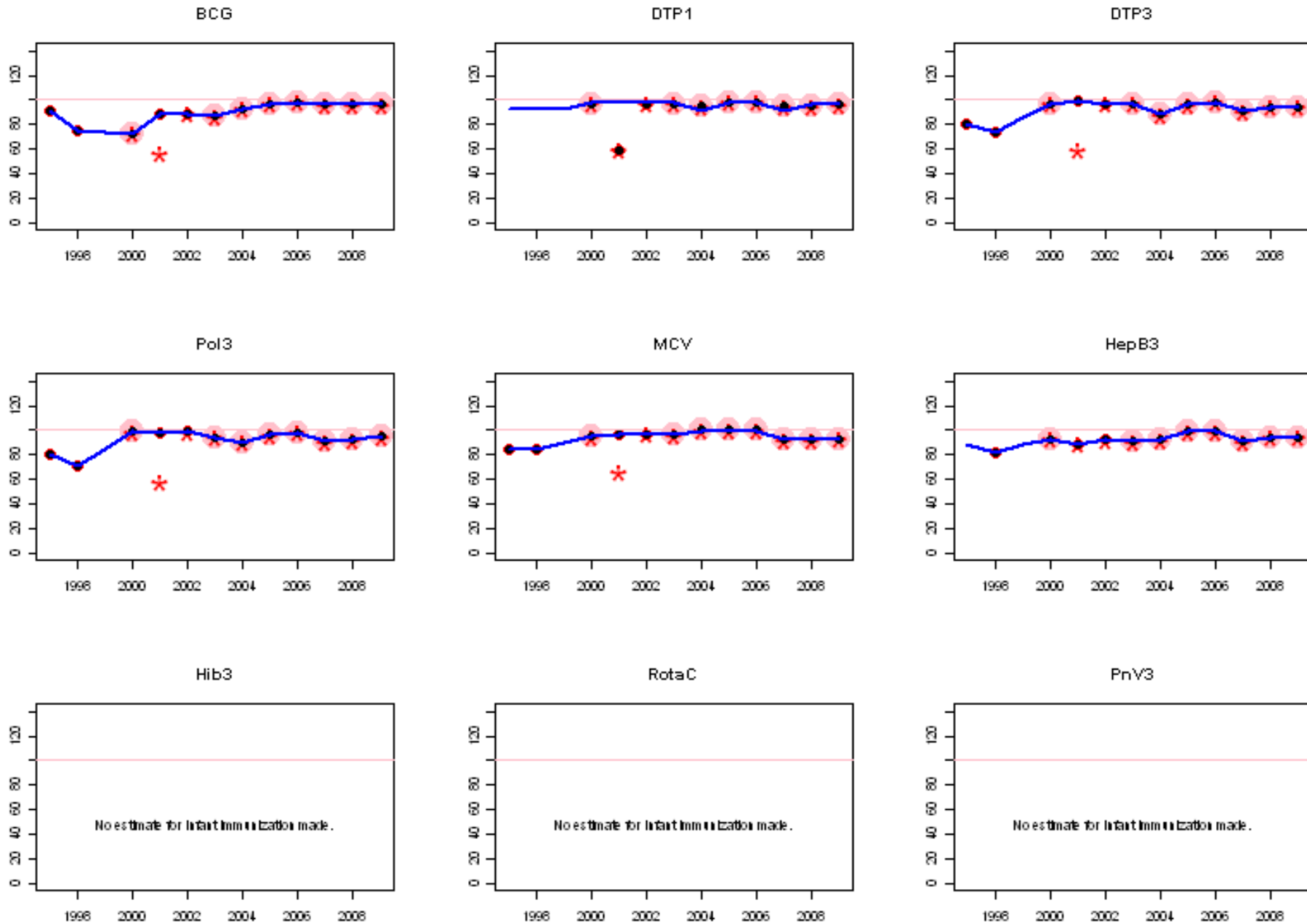


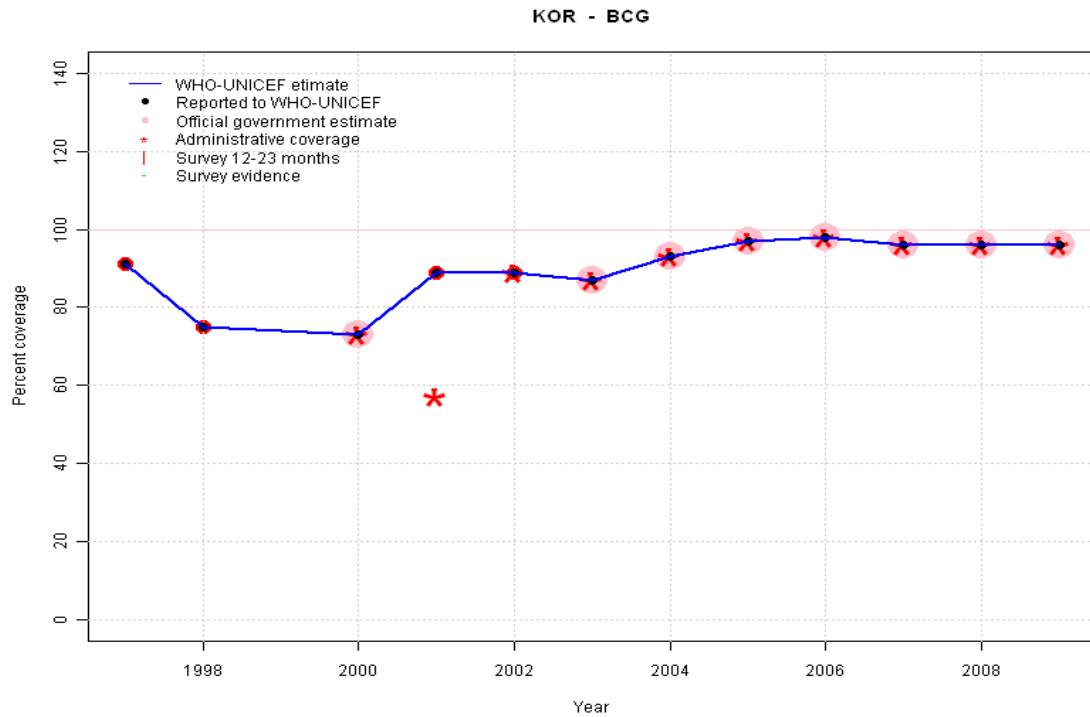
Republic of Korea: WHO and UNICEF estimates of immunization coverage, 1997 - 2009



Republic of Korea - BCG

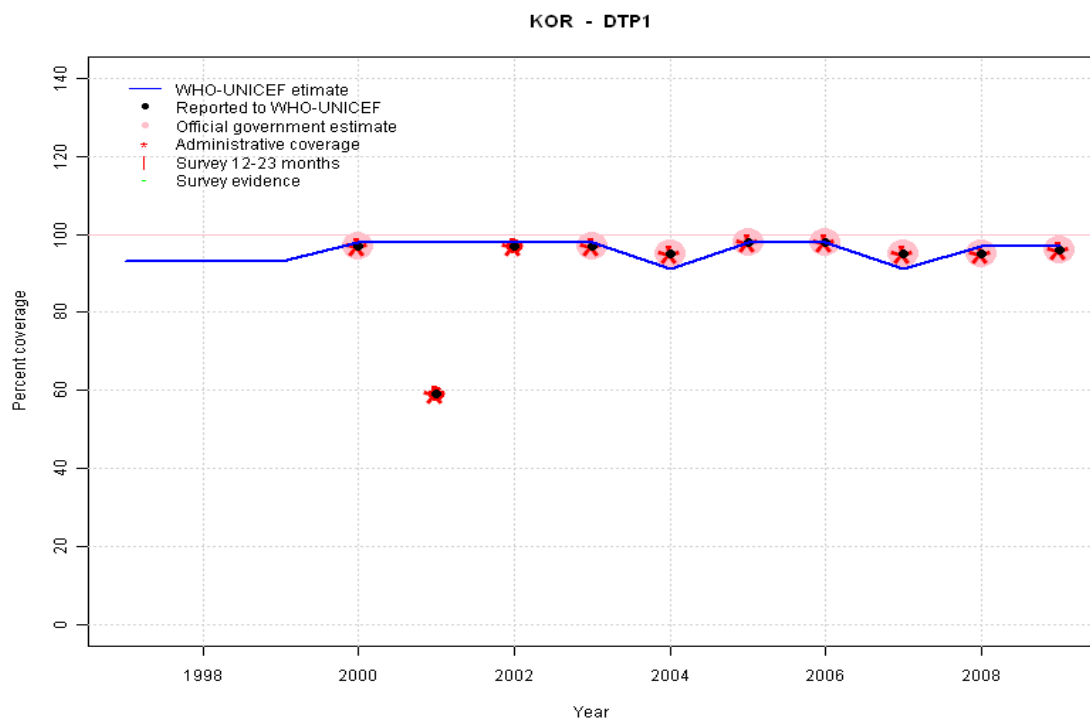
Description:

- 1997: Legacy estimate.
- 1998: Estimate based on reported data.
- 1999: Estimate based on trend in reported data. Missing or ignored reported value estimated by interpolation between reported values of 75 percent in 1998 and 73 percent in 2000.
- 2000: Estimate based on reported data.
- 2001: Estimate based on reported data.
- 2002: Estimate based on reported data.
- 2003: Estimate based on reported data.
- 2004: Estimate based on reported data.
- 2005: Estimate based on reported data.
- 2006: Estimate based on reported data.
- 2007: Estimate based on reported data.
- 2008: Estimate based on reported data.
- 2009: Estimate based on reported data.



	1997	1998	1999	2000	2001	2002	2003	2004	2005	2006	2007	2008	2009
Estimate	91	75	74	73	89	89	87	93	97	98	96	96	96
Reported	91	75	NA	73	89	89	87	93	97	98	96	96	96
Official	NA	NA	NA	73	NA	NA	87	93	97	98	96	96	96
Administrative	NA	NA	NA	73	57	89	87	93	97	98	96	96	96
Survey	NA	NA	NA	NA	NA	NA	NA	NA	NA	NA	NA	NA	NA

Republic of Korea - DTP1



	1997	1998	1999	2000	2001	2002	2003	2004	2005	2006	2007	2008	2009
Estimate	93	93	93	98	98	98	98	91	98	98	91	97	97
Reported	NA	NA	NA	97	59	97	97	95	98	98	95	95	96
Official	NA	NA	NA	97	NA	NA	97	95	98	98	95	95	96
Administrative	NA	NA	NA	97	59	97	97	95	98	98	95	95	96
Survey	NA	NA	NA	NA	NA	NA	NA	NA	NA	NA	NA	NA	NA

Description:

1997: Legacy estimate.

1998: Estimate calibrated to 1997 level (93 percent) and reported coverage (97 percent).

1999: Estimate calibrated to 1997 level (93 percent) and reported coverage (97 percent).

2000: Estimated DTP3 greater than estimated DTP1; DTP1 estimate based on the relationship between DTP1 and DTP3 from 282 surveys.

2001: Estimated DTP3 greater than estimated DTP1; DTP1 estimate based on the relationship between DTP1 and DTP3 from 282 surveys.

2002: Estimated DTP3 greater than estimated DTP1; DTP1 estimate based on the relationship between DTP1 and DTP3 from 282 surveys.

2003: Estimated DTP3 greater than estimated DTP1; DTP1 estimate based on the relationship between DTP1 and DTP3 from 282 surveys.

2004: Estimate calibrated to 1997 level (93 percent) and reported coverage (95 percent).

2005: Estimated DTP3 greater than estimated DTP1; DTP1 estimate based on the relationship between DTP1 and DTP3 from 282 surveys.

2006: Estimated DTP3 greater than estimated DTP1; DTP1 estimate based on the relationship between DTP1 and DTP3 from 282 surveys.

2007: Estimate calibrated to 1997 level (93 percent) and reported coverage (95 percent).

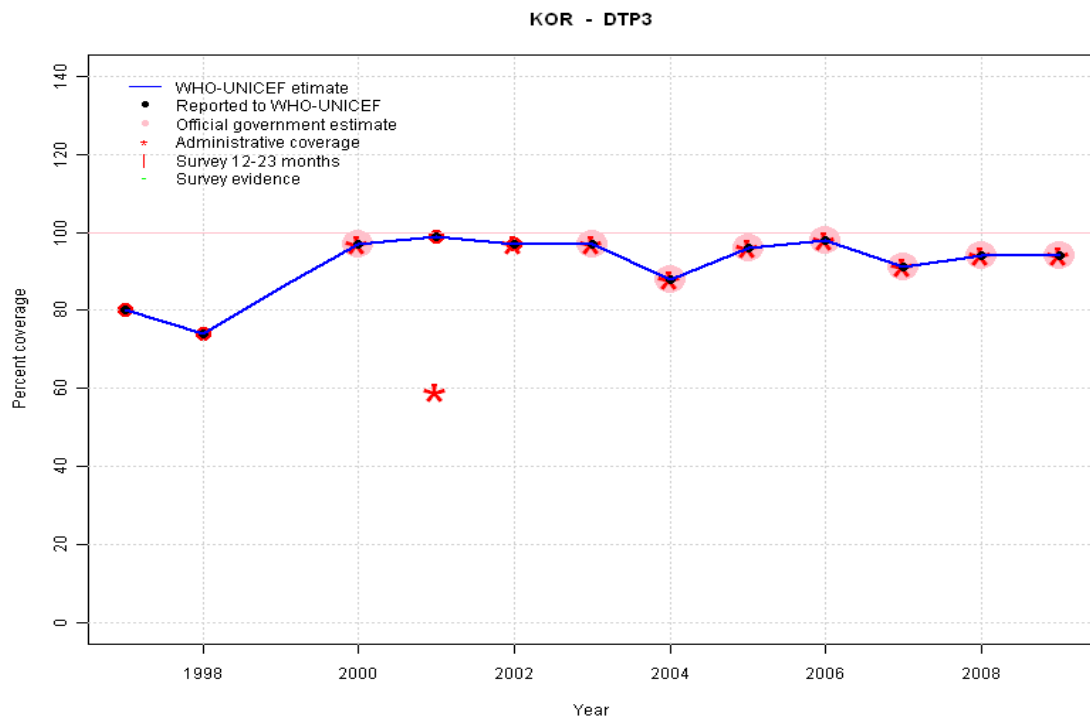
2008: Estimated DTP3 greater than estimated DTP1; DTP1 estimate based on the relationship between DTP1 and DTP3 from 282 surveys.

2009: Estimated DTP3 greater than estimated DTP1; DTP1 estimate based on the relationship between DTP1 and DTP3 from 282 surveys.

Republic of Korea - DTP3

Description:

- 1997: Legacy estimate.
- 1998: Estimate based on reported data.
- 1999: Estimate based on trend in reported data. Missing or ignored reported value estimated by interpolation between reported values of 74 percent in 1998 and 97 percent in 2000.
- 2000: Estimate based on reported data.
- 2001: Estimate based on reported data.
- 2002: Estimate based on reported data.
- 2003: Estimate based on reported data.
- 2004: Estimate based on reported data.
- 2005: Estimate based on reported data.
- 2006: Estimate based on reported data.
- 2007: Estimate based on reported data.
- 2008: Estimate based on reported data.
- 2009: Estimate based on reported data.

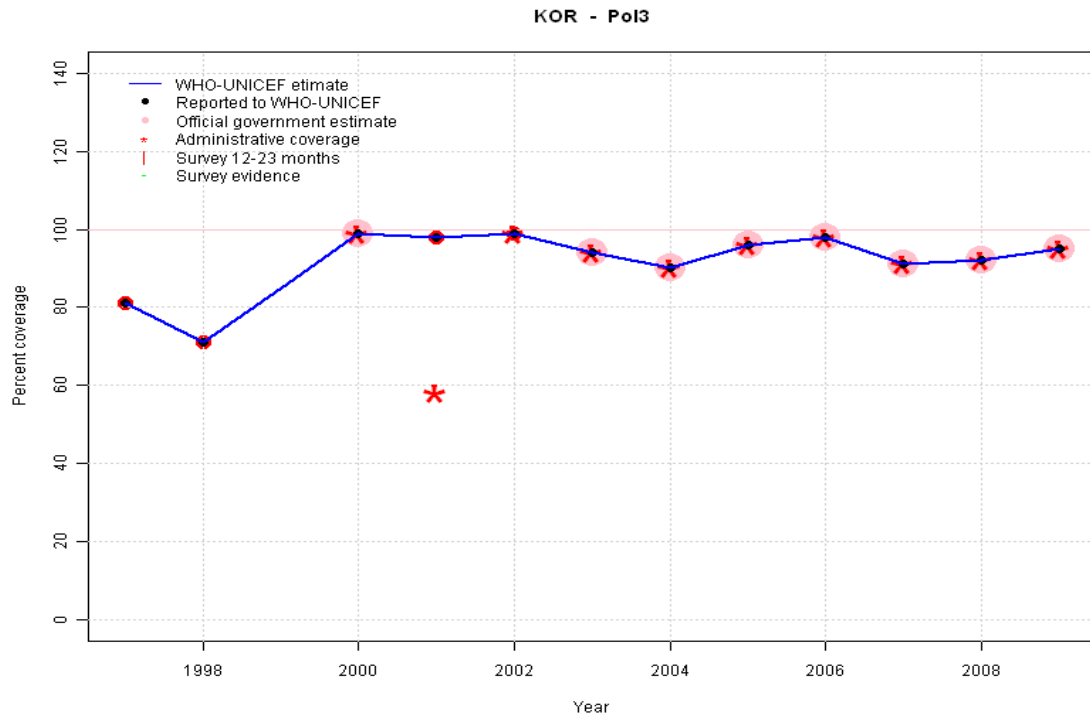


	1997	1998	1999	2000	2001	2002	2003	2004	2005	2006	2007	2008	2009
Estimate	80	74	86	97	99	97	97	88	96	98	91	94	94
Reported	80	74	NA	97	99	97	97	88	96	98	91	94	94
Official	NA	NA	NA	97	NA	NA	97	88	96	98	91	94	94
Administrative	NA	NA	NA	97	59	97	97	88	96	98	91	94	94
Survey	NA	NA	NA	NA	NA	NA	NA	NA	NA	NA	NA	NA	NA

Republic of Korea - Pol3

Description:

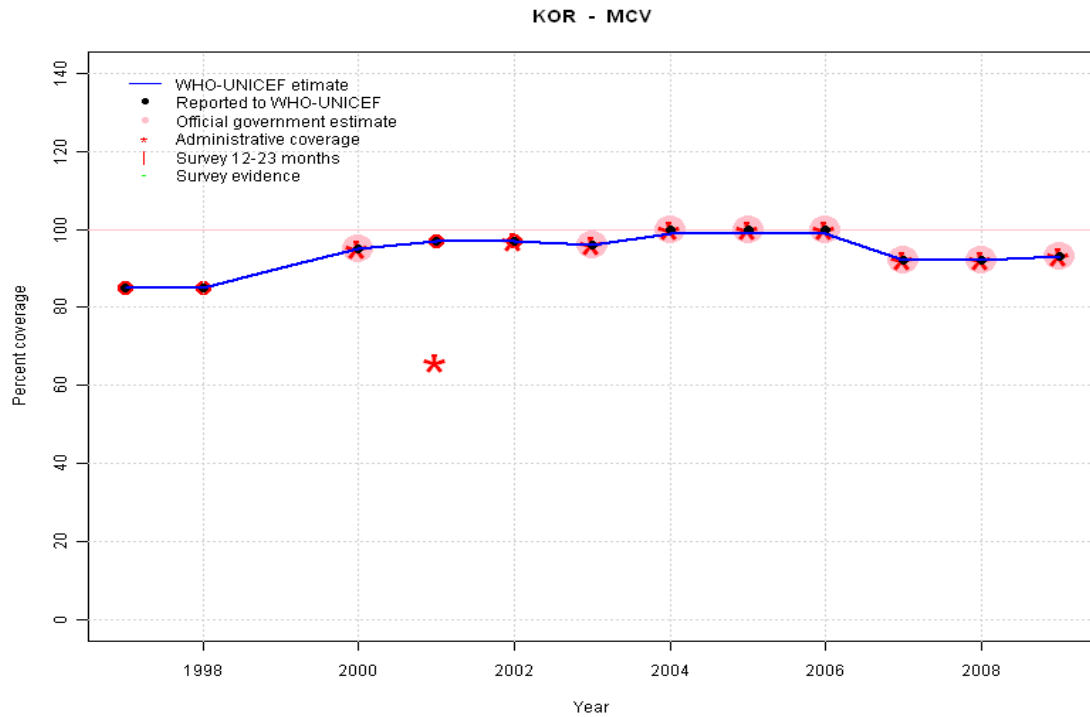
- 1997: Legacy estimate.
- 1998: Estimate based on reported data.
- 1999: Estimate based on trend in reported data. Missing or ignored reported value estimated by interpolation between reported values of 71 percent in 1998 and 99 percent in 2000.
- 2000: Estimate based on reported data.
- 2001: Estimate based on reported data.
- 2002: Estimate based on reported data.
- 2003: Estimate based on reported data.
- 2004: Estimate based on reported data.
- 2005: Estimate based on reported data.
- 2006: Estimate based on reported data.
- 2007: Estimate based on reported data.
- 2008: Estimate based on reported data.
- 2009: Estimate based on reported data.



	1997	1998	1999	2000	2001	2002	2003	2004	2005	2006	2007	2008	2009
Estimate	81	71	85	99	98	99	94	90	96	98	91	92	95
Reported	81	71	NA	99	98	99	94	90	96	98	91	92	95
Official	NA	NA	NA	99	NA	NA	94	90	96	98	91	92	95
Administrative	NA	NA	NA	99	58	99	94	90	96	98	91	92	95
Survey	NA	NA	NA	NA	NA	NA	NA	NA	NA	NA	NA	NA	NA

Republic of Korea - MCV

Description:



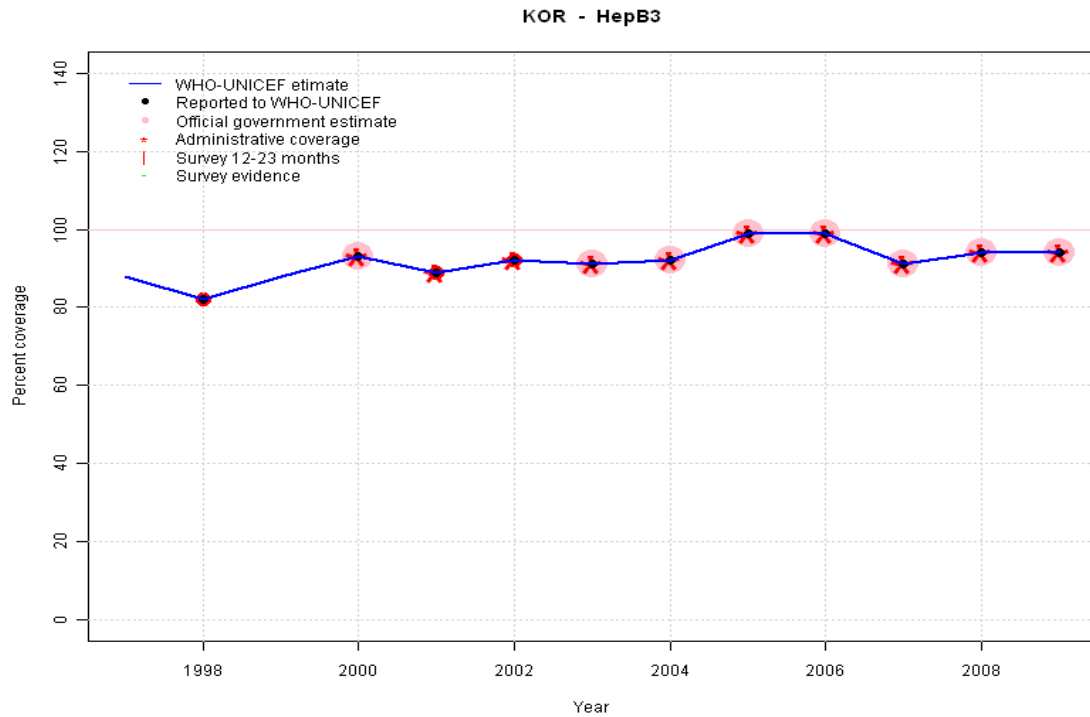
1997: Legacy estimate.
 1998: Estimate based on reported data.
 1999: Estimate based on trend in reported data. Missing or ignored reported value estimated by interpolation between reported values of 85 percent in 1998 and 95 percent in 2000.
 2000: Estimate based on reported data.
 2001: Estimate based on reported data.
 2002: Estimate based on reported data.
 2003: Estimate based on reported data.
 2004: Estimate based on reported data.
 2005: Estimate based on reported data.
 2006: Estimate based on reported data.
 2007: Estimate based on reported data.
 2008: Estimate based on reported data.
 2009: Estimate based on reported data.

	1997	1998	1999	2000	2001	2002	2003	2004	2005	2006	2007	2008	2009
Estimate	85	85	90	95	97	97	96	99	99	99	92	92	93
Reported	85	85	NA	95	97	97	96	100	100	100	92	92	93
Official	NA	NA	NA	95	NA	NA	96	100	100	100	92	92	93
Administrative	NA	NA	NA	95	66	97	96	100	100	100	92	92	93
Survey	NA	NA	NA	NA	NA	NA	NA	NA	NA	NA	NA	NA	NA

Republic of Korea - HepB3

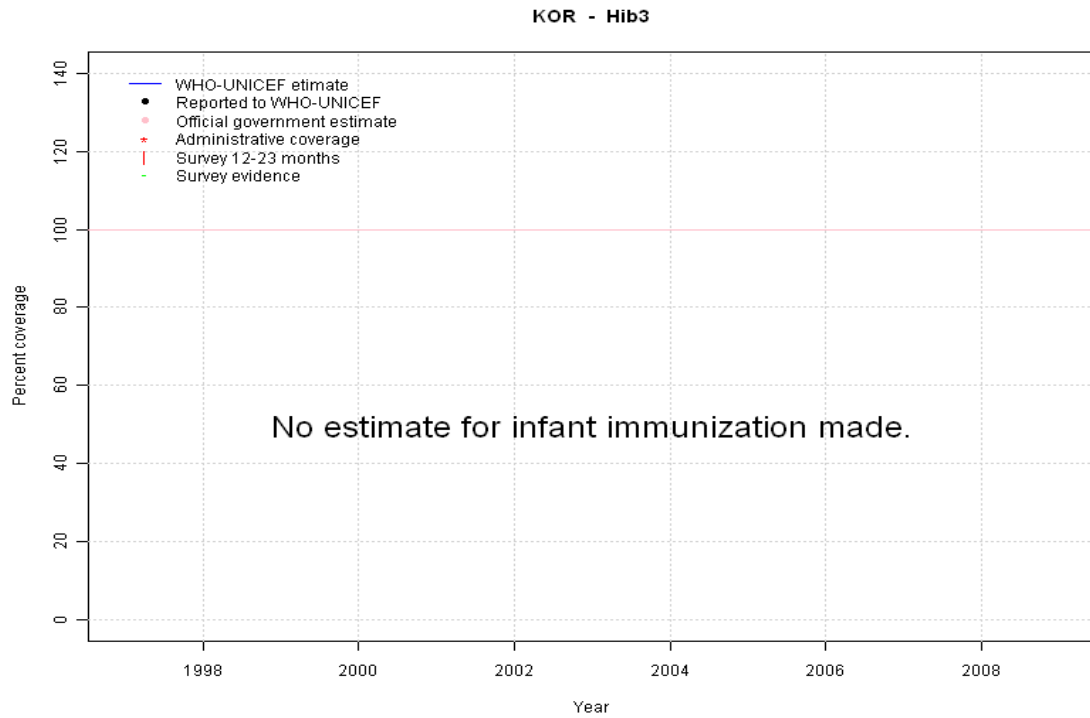
Description:

1997: Legacy estimate.
 1998: Estimate based on reported data.
 1999: Estimate based on trend in reported data. Missing or ignored reported value estimated by interpolation between reported values of 82 percent in 1998 and 93 percent in 2000.
 2000: Estimate based on reported data.
 2001: Estimate based on reported data.
 2002: Estimate based on reported data.
 2003: Estimate based on reported data.
 2004: Estimate based on reported data.
 2005: Estimate based on reported data.
 2006: Estimate based on reported data.
 2007: Estimate based on reported data.
 2008: Estimate based on reported data.
 2009: Estimate based on reported data.



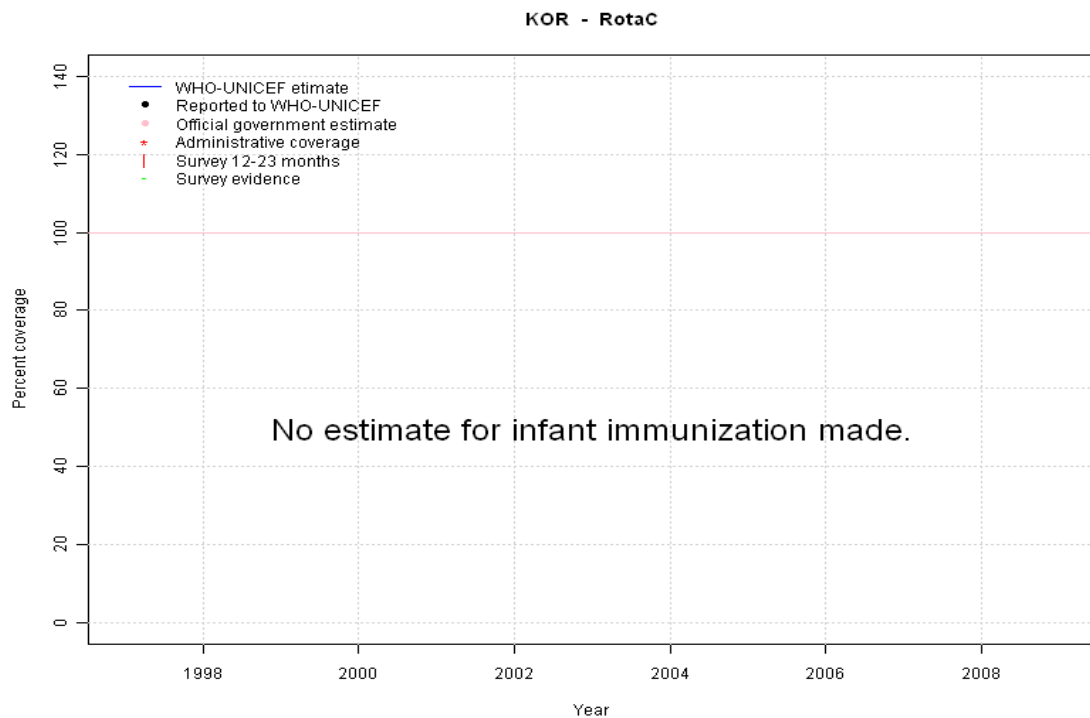
	1997	1998	1999	2000	2001	2002	2003	2004	2005	2006	2007	2008	2009
Estimate	88	82	88	93	89	92	91	92	99	99	91	94	94
Reported	NA	82	NA	93	89	92	91	92	99	99	91	94	94
Official	NA	NA	NA	93	NA	NA	91	92	99	99	91	94	94
Administrative	NA	NA	NA	93	89	92	91	92	99	99	91	94	94
Survey	NA	NA	NA	NA	NA	NA	NA	NA	NA	NA	NA	NA	NA

Republic of Korea - Hib3



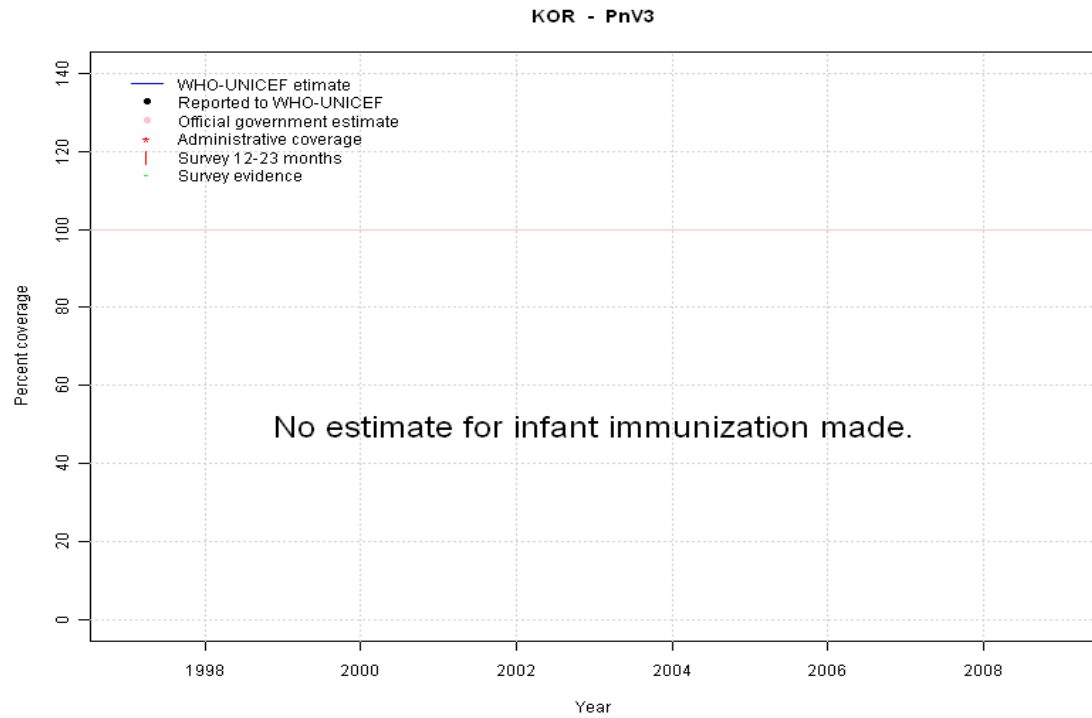
	1997	1998	1999	2000	2001	2002	2003	2004	2005	2006	2007	2008	2009
Estimate	NA	NA	NA	NA	NA	NA	NA	NA	NA	NA	NA	NA	NA
Reported	NA	NA	NA	NA	NA	NA	NA	NA	NA	NA	NA	NA	NA
Official	NA	NA	NA	NA	NA	NA	NA	NA	NA	NA	NA	NA	NA
Administrative	NA	NA	NA	NA	NA	NA	NA	NA	NA	NA	NA	NA	NA
Survey	NA	NA	NA	NA	NA	NA	NA	NA	NA	NA	NA	NA	NA

Republic of Korea - RotaC



	1997	1998	1999	2000	2001	2002	2003	2004	2005	2006	2007	2008	2009
Estimate	NA	NA	NA	NA	NA	NA	NA	NA	NA	NA	NA	NA	NA
Reported	NA	NA	NA	NA	NA	NA	NA	NA	NA	NA	NA	NA	NA
Official	NA	NA	NA	NA	NA	NA	NA	NA	NA	NA	NA	NA	NA
Administrative	NA	NA	NA	NA	NA	NA	NA	NA	NA	NA	NA	NA	NA
Survey	NA	NA	NA	NA	NA	NA	NA	NA	NA	NA	NA	NA	NA

Republic of Korea - PnV3



	1997	1998	1999	2000	2001	2002	2003	2004	2005	2006	2007	2008	2009
Estimate	NA	NA	NA	NA	NA	NA	NA	NA	NA	NA	NA	NA	NA
Reported	NA	NA	NA	NA	NA	NA	NA	NA	NA	NA	NA	NA	NA
Official	NA	NA	NA	NA	NA	NA	NA	NA	NA	NA	NA	NA	NA
Administrative	NA	NA	NA	NA	NA	NA	NA	NA	NA	NA	NA	NA	NA
Survey	NA	NA	NA	NA	NA	NA	NA	NA	NA	NA	NA	NA	NA

Further information and estimates for 1980-1996 are available at:

http://www.childinfo.org/immunization_countryreports.html

http://www.who.int/immunization_monitoring/routine/immunization_coverage/en/index4.html