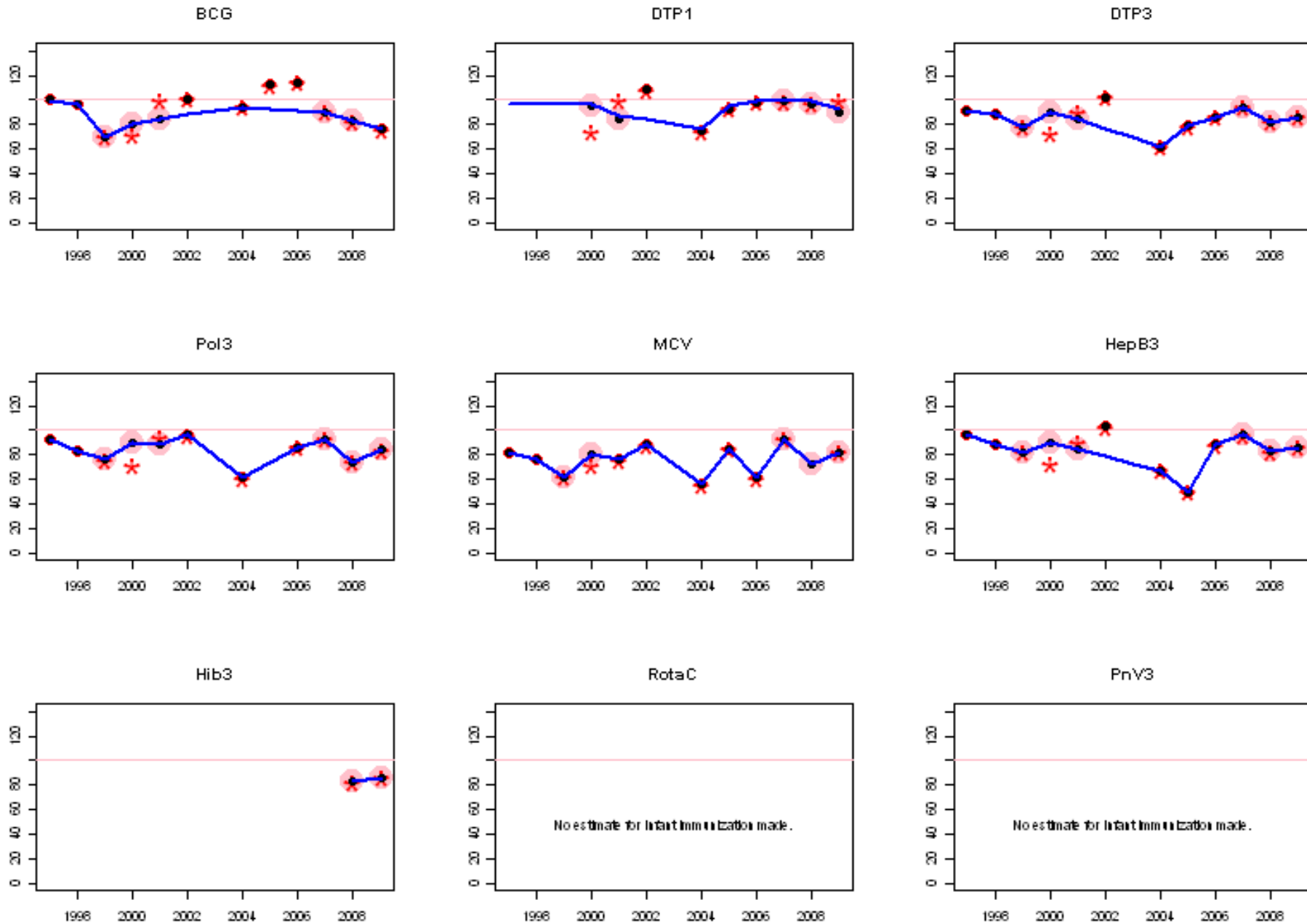
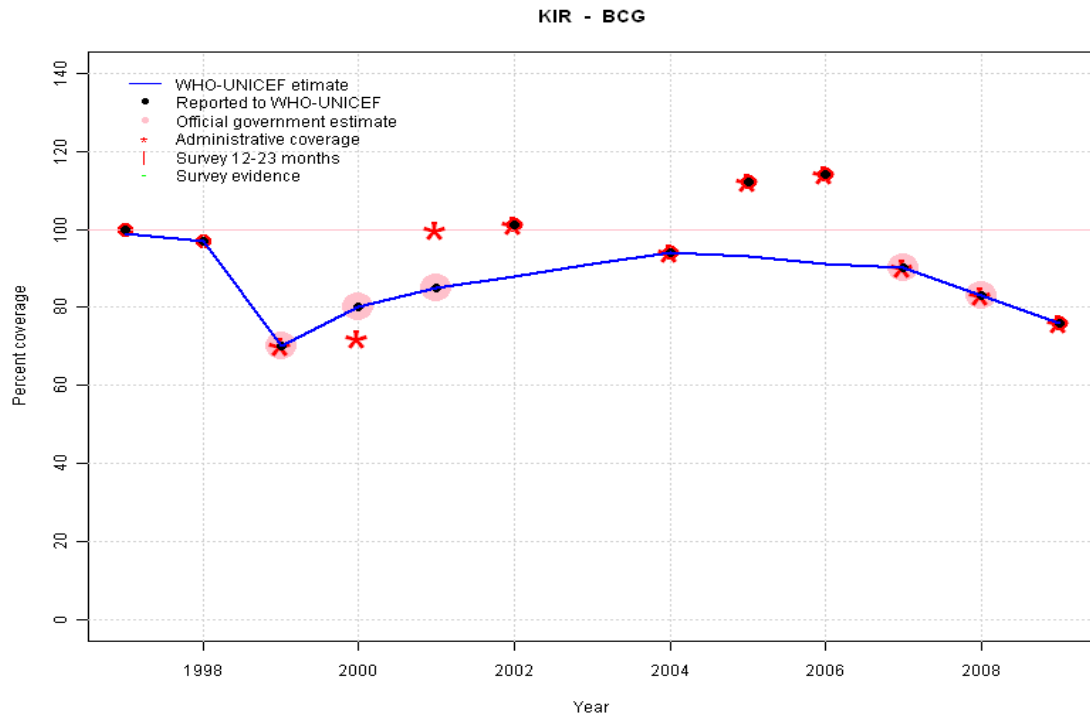


Kiribati: WHO and UNICEF estimates of immunization coverage, 1997 - 2009



# Kiribati - BCG



	1997	1998	1999	2000	2001	2002	2003	2004	2005	2006	2007	2008	2009
Estimate	99	97	70	80	85	88	91	94	93	91	90	83	76
Reported	100	97	70	80	85	101	NA	94	112	114	90	83	76
Official	NA	NA	70	80	85	NA	NA	NA	NA	NA	90	83	NA
Administrative	NA	NA	70	72	100	101	NA	94	112	114	90	83	76
Survey	NA	NA	NA	NA	NA	NA	NA	NA	NA	NA	NA	NA	NA

## Description:

1997: Legacy estimate.

1998: Estimate based on reported data.

1999: Estimate based on reported data. Fluctuations attributed to small birth cohort.

2000: Estimate based on reported data.

2001: Estimate based on reported data.

2002: Estimate based on trend in reported data. Missing or ignored reported value estimated by interpolation between reported values of 85 percent in 2001 and 94 percent in 2004. 2002 reported data (101 percent) ignored; greater than 100 percent.

2003: Estimate based on trend in reported data. Missing or ignored reported value estimated by interpolation between reported values of 85 percent in 2001 and 94 percent in 2004.

2004: Estimate based on reported data.

2005: Estimate based on trend in reported data. Missing or ignored reported value estimated by interpolation between reported values of 94 percent in 2004 and 90 percent in 2007. 2005 reported data (112 percent) ignored; greater than 100 percent.

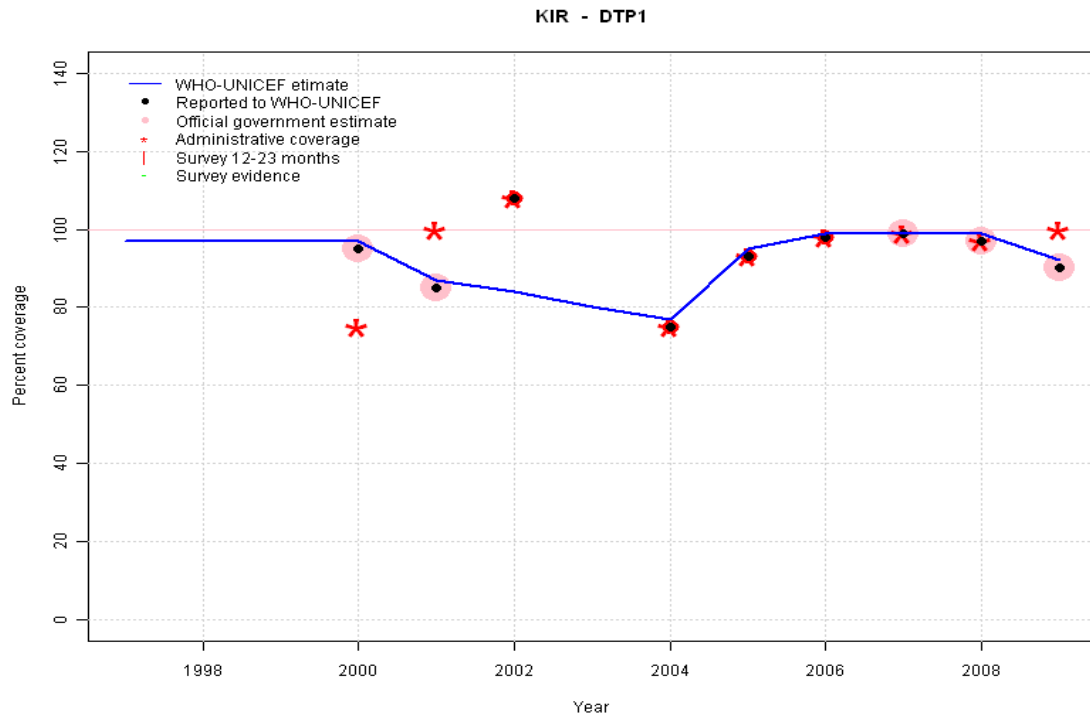
2006: Estimate based on trend in reported data. Missing or ignored reported value estimated by interpolation between reported values of 94 percent in 2004 and 90 percent in 2007. 2006 reported data (114 percent) ignored; greater than 100 percent.

2007: Estimate based on reported data.

2008: Estimate based on reported data.

2009: Estimate based on reported data.

# Kiribati - DTP1



	1997	1998	1999	2000	2001	2002	2003	2004	2005	2006	2007	2008	2009
Estimate	97	97	97	97	87	84	80	77	95	99	99	99	92
Reported	NA	NA	NA	95	85	108	NA	75	93	98	99	97	90
Official	NA	NA	NA	95	85	NA	NA	NA	NA	NA	99	97	90
Administrative	NA	NA	NA	75	100	108	NA	75	93	98	99	97	100
Survey	NA	NA	NA	NA	NA	NA	NA	NA	NA	NA	NA	NA	NA

## Description:

1997: Legacy estimate.

1998: Estimate calibrated to 1997 level (97 percent) and reported coverage (95 percent).

1999: Estimate calibrated to 1997 level (97 percent) and reported coverage (95 percent).

2000: Estimate calibrated to 1997 level (97 percent) and reported coverage (95 percent).

2001: Estimate calibrated to 1997 level (97 percent) and reported coverage (85 percent).

2002: Estimate calibrated to 1997 level (97 percent) and reported coverage (82 percent). 2002 reported data (108 percent) ignored; greater than 100 percent.

2003: Estimate calibrated to 1997 level (97 percent) and reported coverage (78 percent).

2004: Estimate calibrated to 1997 level (97 percent) and reported coverage (75 percent).

2005: Estimate calibrated to 1997 level (97 percent) and reported coverage (93 percent).

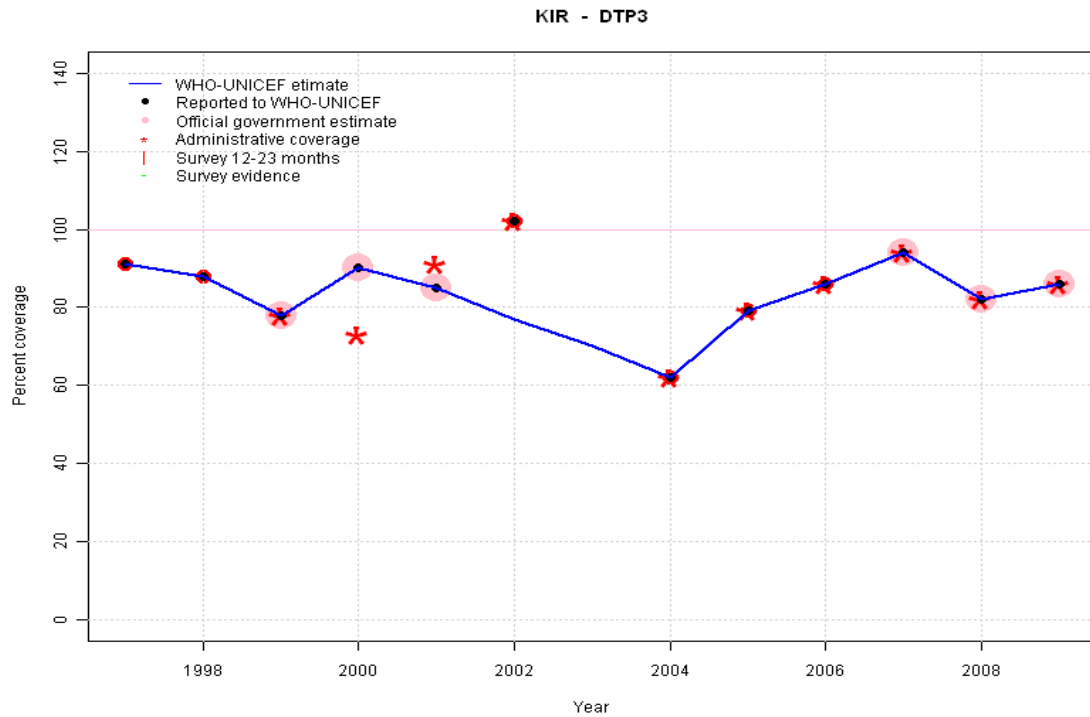
2006: Estimate calibrated to 1997 level (97 percent) and reported coverage (98 percent).

2007: Estimate calibrated to 1997 level (97 percent) and reported coverage (99 percent).

2008: Estimate calibrated to 1997 level (97 percent) and reported coverage (97 percent).

2009: Estimate calibrated to 1997 level (97 percent) and reported coverage (90 percent).

# Kiribati - DTP3



## Description:

1997: Legacy estimate.

1998: Estimate based on reported data.

1999: Estimate based on reported data. Fluctuations attributed to small birth cohort.

2000: Estimate based on reported data.

2001: Estimate based on reported data.

2002: Estimate based on trend in reported data. Missing or ignored reported value estimated by interpolation between reported values of 85 percent in 2001 and 62 percent in 2004. 2002 reported data (102 percent) ignored; greater than 100 percent.

2003: Estimate based on trend in reported data. Missing or ignored reported value estimated by interpolation between reported values of 85 percent in 2001 and 62 percent in 2004.

2004: Estimate based on reported data.

2005: Estimate based on reported data.

2006: Estimate based on reported data.

2007: Estimate based on reported data.

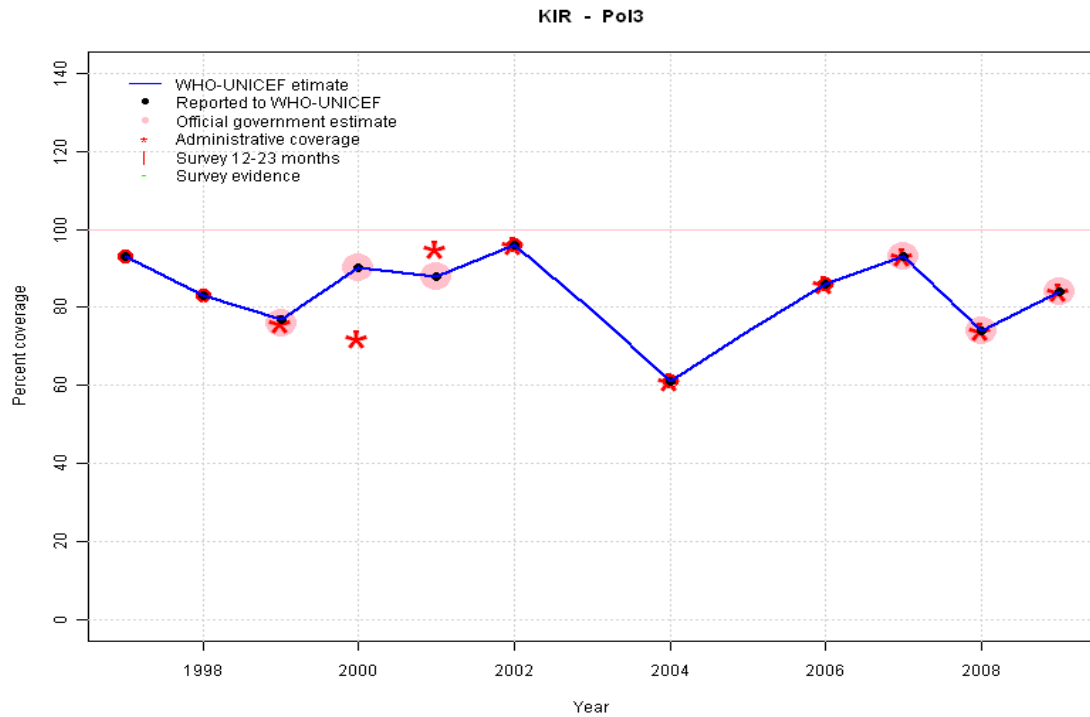
2008: Estimate based on reported data.

2009: Estimate based on reported data.

	1997	1998	1999	2000	2001	2002	2003	2004	2005	2006	2007	2008	2009
Estimate	91	88	78	90	85	77	70	62	79	86	94	82	86
Reported	91	88	78	90	85	102	NA	62	79	86	94	82	86
Official	NA	NA	78	90	85	NA	NA	NA	NA	NA	94	82	86
Administrative	NA	NA	78	73	91	102	NA	62	79	86	94	82	86
Survey	NA	NA	NA	NA	NA	NA	NA	NA	NA	NA	NA	NA	NA

# Kiribati - Pol3

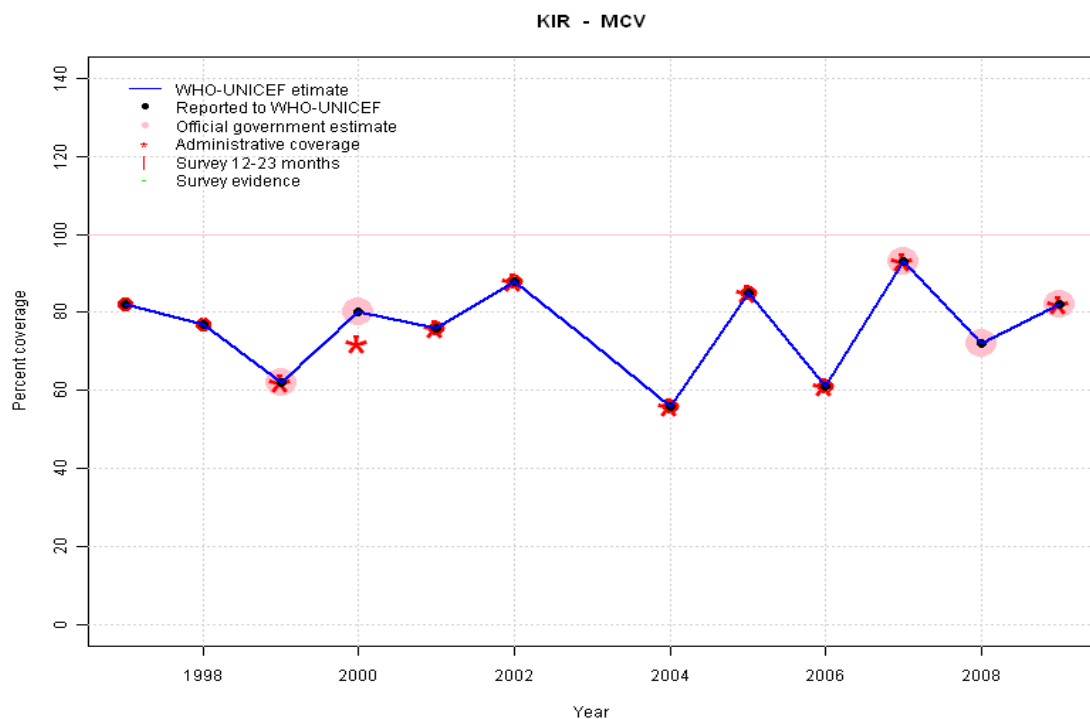
## Description:



- 1997: Legacy estimate.
- 1998: Estimate based on reported data.
- 1999: Estimate based on reported data.
- 2000: Estimate based on reported data.
- 2001: Estimate based on reported data.
- 2002: Estimate based on reported data.
- 2003: Estimate based on trend in reported data. Missing or ignored reported value estimated by interpolation between reported values of 96 percent in 2002 and 61 percent in 2004.
- 2004: Estimate based on reported data.
- 2005: Estimate based on trend in reported data. Missing or ignored reported value estimated by interpolation between reported values of 61 percent in 2004 and 86 percent in 2006.
- 2006: Estimate based on reported data.
- 2007: Estimate based on reported data.
- 2008: Estimate based on reported data. Fluctuations attributed to small birth cohort.
- 2009: Estimate based on reported data. Fluctuations attributed to small birth cohort.

	1997	1998	1999	2000	2001	2002	2003	2004	2005	2006	2007	2008	2009
Estimate	93	83	77	90	88	96	79	61	74	86	93	74	84
Reported	93	83	77	90	88	96	NA	61	NA	86	93	74	84
Official	NA	NA	76	90	88	NA	NA	NA	NA	NA	93	74	84
Administrative	NA	NA	76	72	95	96	NA	61	NA	86	93	74	84
Survey	NA	NA	NA	NA	NA	NA	NA	NA	NA	NA	NA	NA	NA

# Kiribati - MCV



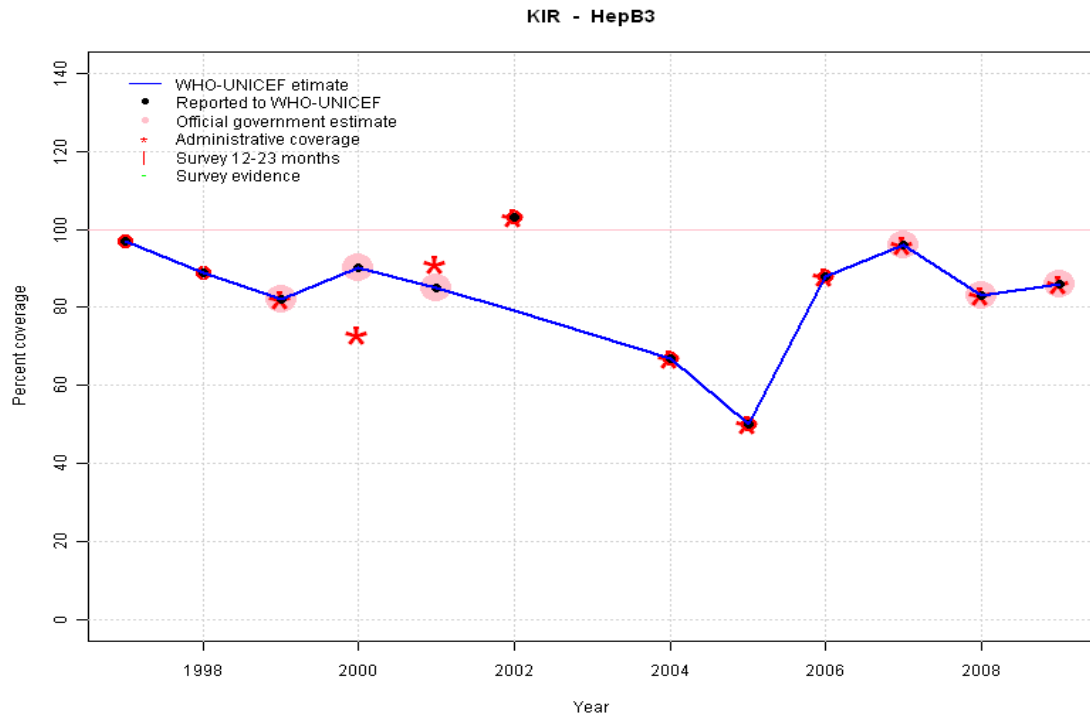
	1997	1998	1999	2000	2001	2002	2003	2004	2005	2006	2007	2008	2009
Estimate	82	77	62	80	76	88	72	56	85	61	93	72	82
Reported	82	77	62	80	76	88	NA	56	85	61	93	72	82
Official	NA	NA	62	80	NA	NA	NA	NA	NA	NA	93	72	82
Administrative	NA	NA	62	72	76	88	NA	56	85	61	93	NA	82
Survey	NA	NA	NA	NA	NA	NA	NA	NA	NA	NA	NA	NA	NA

## Description:

- 1997: Legacy estimate. Fluctuations attributed to small birth cohort.
- 1998: Estimate based on reported data. Fluctuations attributed to small birth cohort.
- 1999: Estimate based on reported data. Fluctuations attributed to small birth cohort.
- 2000: Estimate based on reported data. Fluctuations attributed to small birth cohort.
- 2001: Estimate based on reported data. Fluctuations attributed to small birth cohort.
- 2002: Estimate based on reported data. Fluctuations attributed to small birth cohort.
- 2003: Estimate based on trend in reported data. Missing or ignored reported value estimated by interpolation between reported values of 88 percent in 2002 and 56 percent in 2004. Fluctuations attributed to small birth cohort.
- 2004: Estimate based on reported data. Fluctuations attributed to small birth cohort.
- 2005: Estimate based on reported data. Fluctuations attributed to small birth cohort.
- 2006: Estimate based on reported data. Fluctuations attributed to small birth cohort.
- 2007: Estimate based on reported data. Fluctuations attributed to small birth cohort.
- 2008: Estimate based on reported data. Fluctuations attributed to small birth cohort.
- 2009: Estimate based on reported data. Fluctuations attributed to small birth cohort.

# Kiribati - HepB3

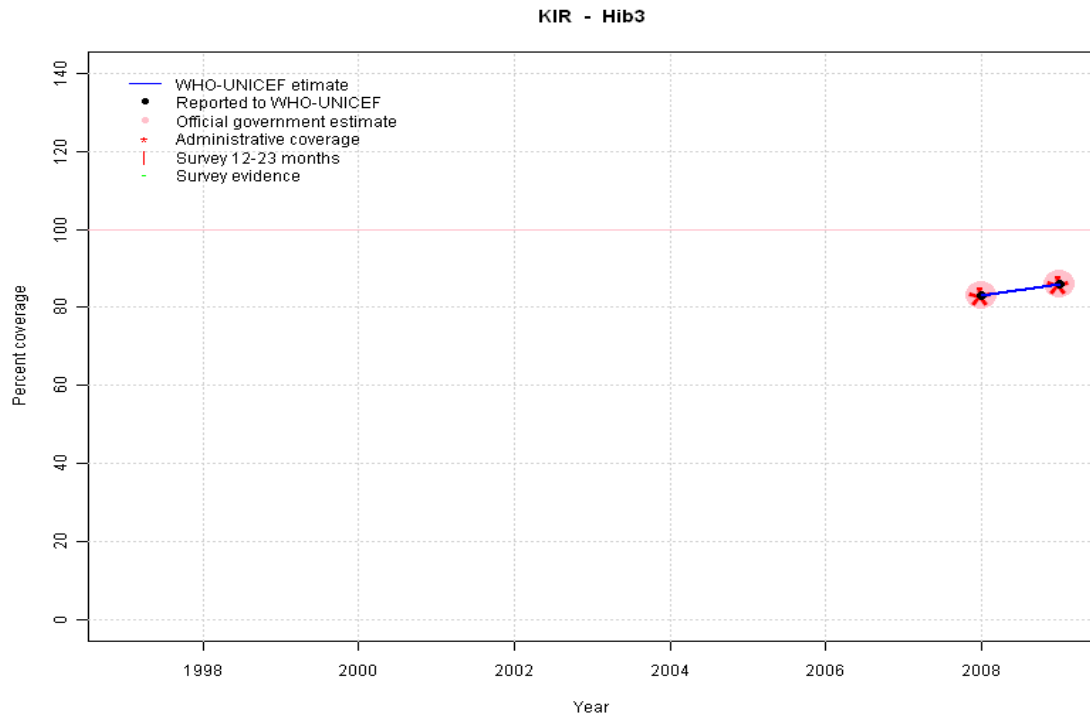
## Description:



- 1997: Legacy estimate.
- 1998: Estimate based on reported data.
- 1999: Estimate based on reported data.
- 2000: Estimate based on reported data.
- 2001: Estimate based on reported data.
- 2002: Estimate based on trend in reported data. Missing or ignored reported value estimated by interpolation between reported values of 85 percent in 2001 and 67 percent in 2004. 2002 reported data (103 percent) ignored; greater than 100 percent.
- 2003: Estimate based on trend in reported data. Missing or ignored reported value estimated by interpolation between reported values of 85 percent in 2001 and 67 percent in 2004.
- 2004: Estimate based on reported data.
- 2005: Estimate based on reported data. Fluctuations attributed to small birth cohort.
- 2006: Estimate based on reported data.
- 2007: Estimate based on reported data.
- 2008: Estimate based on reported data.
- 2009: Estimate based on reported data.

	1997	1998	1999	2000	2001	2002	2003	2004	2005	2006	2007	2008	2009
Estimate	97	89	82	90	85	79	73	67	50	88	96	83	86
Reported	97	89	82	90	85	103	NA	67	50	88	96	83	86
Official	NA	NA	82	90	85	NA	NA	NA	NA	NA	96	83	86
Administrative	NA	NA	82	73	91	103	NA	67	50	88	96	83	86
Survey	NA	NA	NA	NA	NA	NA	NA	NA	NA	NA	NA	NA	NA

# Kiribati - Hib3



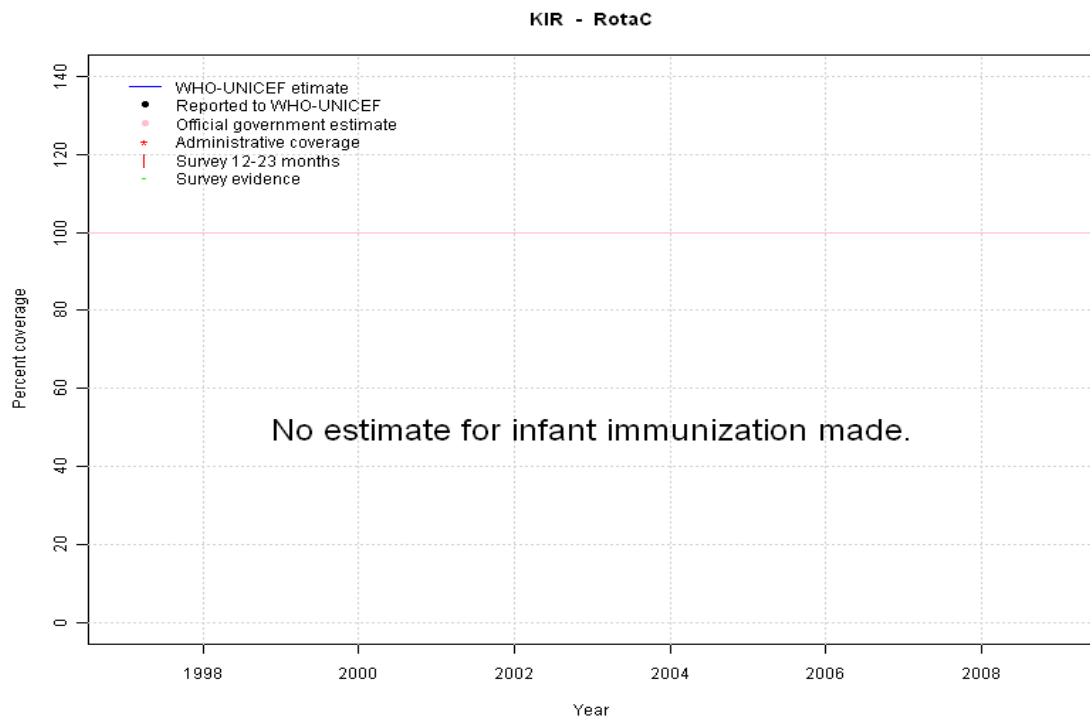
## Description:

2008: Estimate based on reported data. Hib introduced in 2008 Vaccine presentation is DTP-HepB-Hib.

2009: Estimate based on reported data.

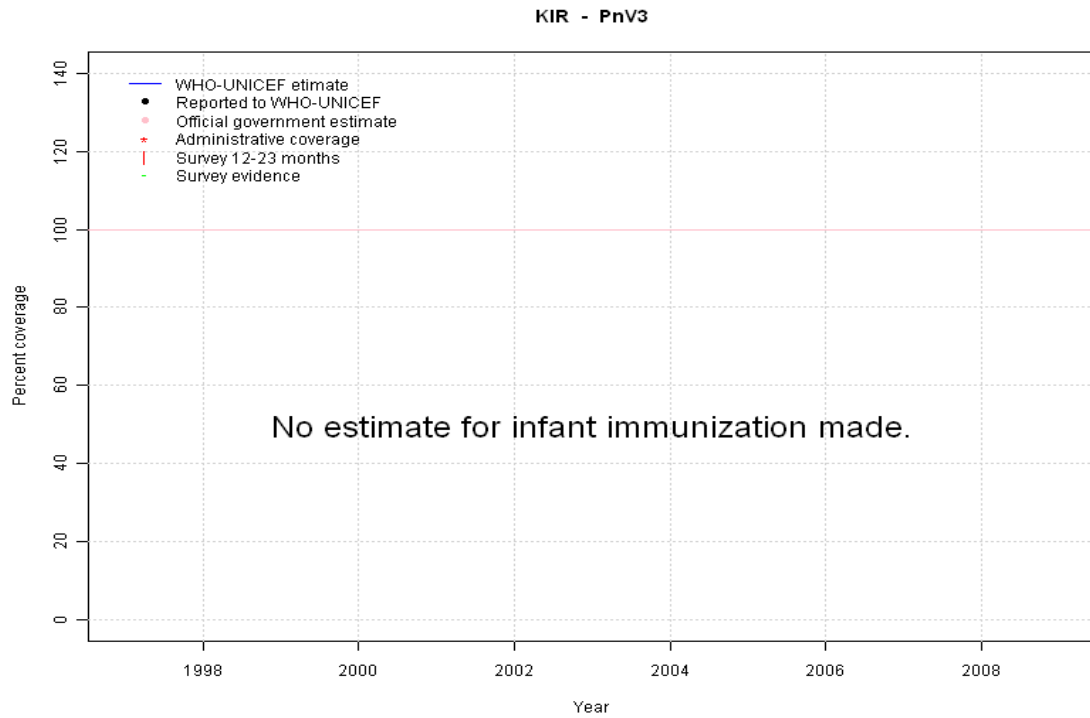
	1997	1998	1999	2000	2001	2002	2003	2004	2005	2006	2007	2008	2009
Estimate	NA	NA	NA	NA	NA	NA	NA	NA	NA	NA	NA	83	86
Reported	NA	NA	NA	NA	NA	NA	NA	NA	NA	NA	NA	83	86
Official	NA	NA	NA	NA	NA	NA	NA	NA	NA	NA	NA	83	86
Administrative	NA	NA	NA	NA	NA	NA	NA	NA	NA	NA	NA	83	86
Survey	NA	NA	NA	NA	NA	NA	NA	NA	NA	NA	NA	NA	NA

# Kiribati - RotaC



	1997	1998	1999	2000	2001	2002	2003	2004	2005	2006	2007	2008	2009
Estimate	NA	NA	NA	NA	NA	NA	NA	NA	NA	NA	NA	NA	NA
Reported	NA	NA	NA	NA	NA	NA	NA	NA	NA	NA	NA	NA	NA
Official	NA	NA	NA	NA	NA	NA	NA	NA	NA	NA	NA	NA	NA
Administrative	NA	NA	NA	NA	NA	NA	NA	NA	NA	NA	NA	NA	NA
Survey	NA	NA	NA	NA	NA	NA	NA	NA	NA	NA	NA	NA	NA

# Kiribati - PnV3



	1997	1998	1999	2000	2001	2002	2003	2004	2005	2006	2007	2008	2009
Estimate	NA	NA	NA	NA	NA	NA	NA	NA	NA	NA	NA	NA	NA
Reported	NA	NA	NA	NA	NA	NA	NA	NA	NA	NA	NA	NA	NA
Official	NA	NA	NA	NA	NA	NA	NA	NA	NA	NA	NA	NA	NA
Administrative	NA	NA	NA	NA	NA	NA	NA	NA	NA	NA	NA	NA	NA
Survey	NA	NA	NA	NA	NA	NA	NA	NA	NA	NA	NA	NA	NA

Further information and estimates for 1980-1996 are available at:

[http://www.childinfo.org/immunization\\_countryreports.html](http://www.childinfo.org/immunization_countryreports.html)

[http://www.who.int/immunization\\_monitoring/routine/immunization\\_coverage/en/index4.html](http://www.who.int/immunization_monitoring/routine/immunization_coverage/en/index4.html)