



**WHO / UNICEF**

**Joint Monitoring Programme  
for Water Supply and Sanitation**

**Coverage Estimates**  
**Improved Drinking Water**

Updated in July 2008

---

**Korea, Rep of**

---

## Urban and Rural Water - Republic of Korea

### Census

CENSUS	1997	
(Actual Population Figures)		
WATER	Urban	Rural
General Waterworks	35'975	3'631
Small-Scale Waterworks	440	2'714
Exclusive Waterworks	67	274
Others	1'125	2'647
<b>TOTAL URBAN POPULATION</b>	<b>37'607</b>	<b>9'266</b>
<b>Total Urban Population Served</b>	<b>36482</b>	<b>6619</b>
<b>Access to improved drinking water sources</b>	<b>97%</b>	<b>71%</b>
% House connections	96%	39%

Source: 1997 census as recorded in the Global Water Supply and Sanitation Assessment 2000. Water Supply and Sanitation Sector Questionnaire - 1999.

### Estimate

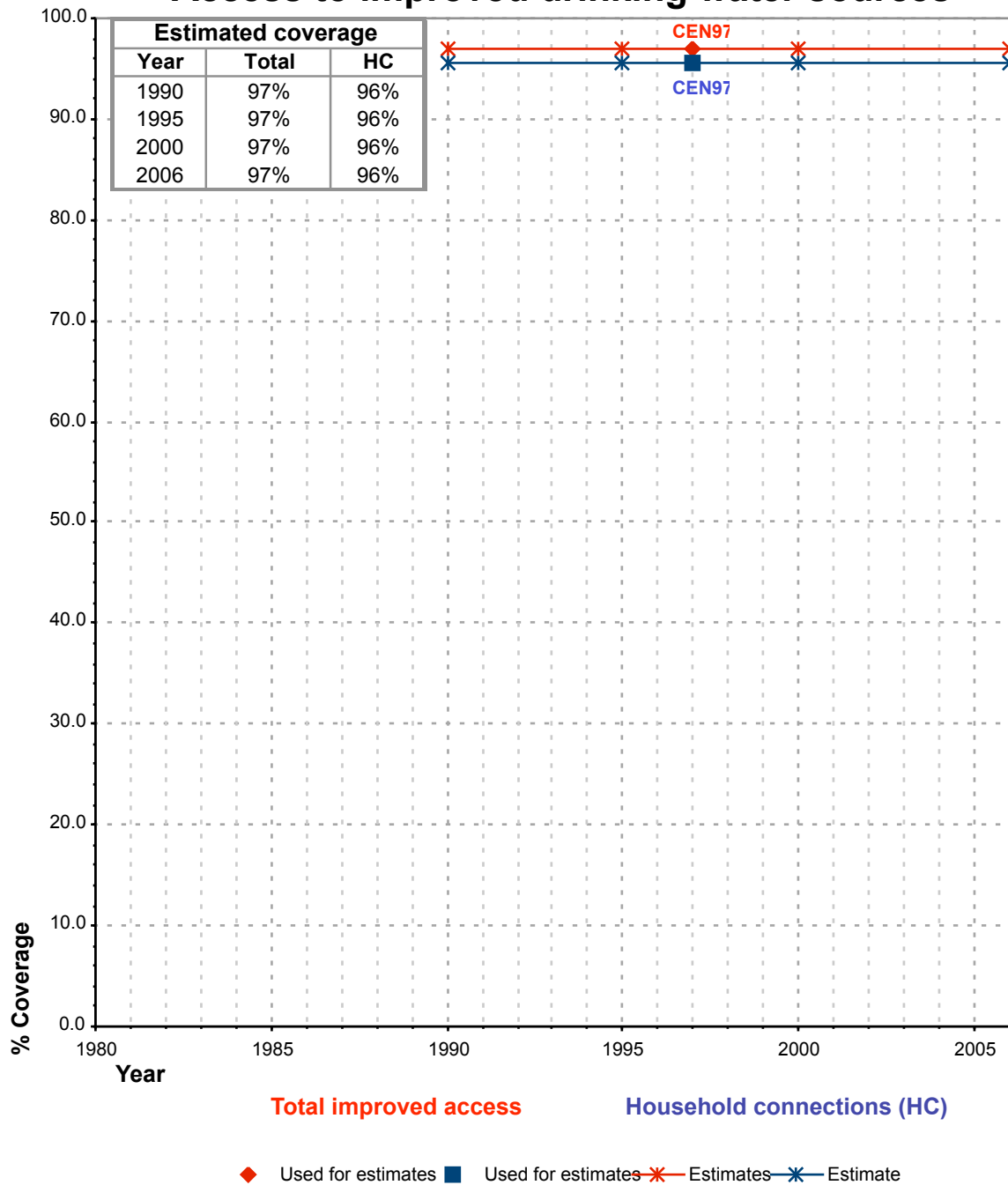
FORM-6/WHO	1999	
Population in thousands		
WATER	Urban	Rural
Population served with household connection	35'975	3'631
Population without household connection but with reasonable access to a public water point	507	2'988
<b>Total population served</b>	<b>36'482</b>	<b>6'619</b>
Total population unserved	1'127	2'649
<b>Total population</b>	<b>37'609</b>	<b>9'268</b>
<b>Access to improved drinking water sources</b>	<b>97%</b>	<b>71%</b>
% House connections	96%	39%

Source: Global Water Supply and Sanitation Assessment 2000. Water Supply and Sanitation Sector Questionnaire - 1999. Form 6 sent to WHO.

**JMP99 figures are the same as those of the CEN97 !**

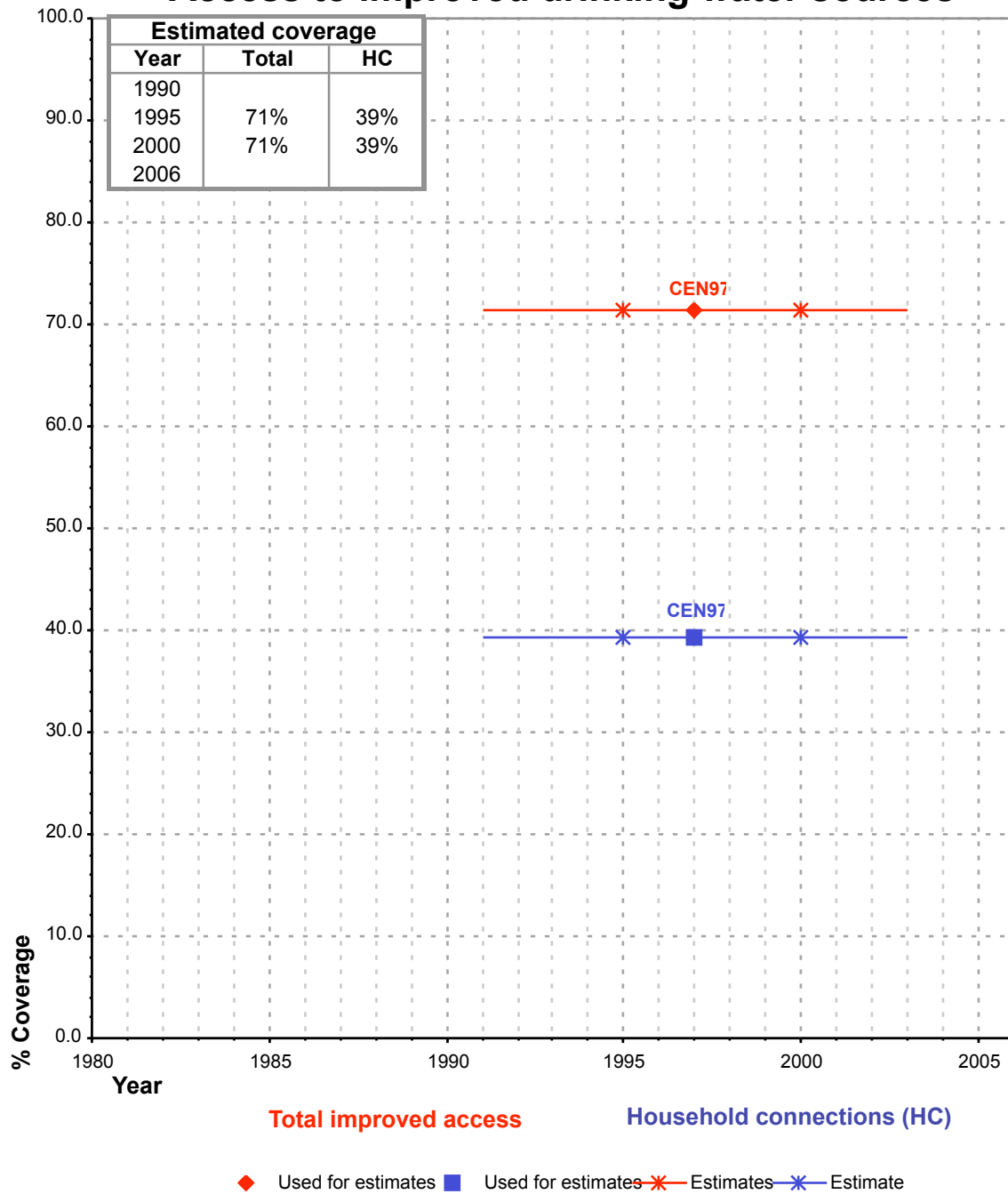
Republic of Korea			DRINKING WATER							
			URBAN				RURAL			
			HC		Total		HC		Total	
Source	Code	Year	Used for estimates	Not used for estimates	Used for estimates	Not used for estimates	Used for estimates	Not used for estimates	Used for estimates	Not used for estimates
The International Drinking Water Supply and Sanitation Decade. Review of National Baseline Data (as at December 1980). WHO 1984	WHO80	1980		86.0		86.0				61.0
The International Drinking Water Supply and Sanitation Decade. Review of National Progress (as at December 1983). WHO 1986.	WHO83	1983								60.0
The International Drinking Water Supply and Sanitation Decade. Review of Mid-Decade Progress (as at December 1985). WHO 1987.	WHO85	1985		90.0		90.0				48.0
The International Drinking Water Supply and Sanitation Decade. Review of National Progress (as at December 1988). WHO 1990.	WHO88	1988		91.0		91.0				49.0
The International Drinking Water Supply and Sanitation Decade. End of Decade Review (as at December 1990). WHO1992.	WHO90	1990		93.0		100.0				76.0
Water Supply and Sanitation Sector Monitoring Report 1993 (Sector Status as of 31 December 1991)	JMP93	1991				97.0				97.0
1997 census as recorded in the Global Water Supply and Sanitation Assessment 2000. Water Supply and Sanitation Sector Questionnaire - 1999. Form 4 sent to WHO.	CEN97	1997	95.7		97.0		39.2		71.4	
Global Water Supply and Sanitation Assessment 2000. Water Supply and Sanitation Sector Questionnaire - 1999. (Form 6 sent to WHO)	JMP99	1999		95.7		97.0		39.2		71.4

# Republic of Korea - urban - Access to improved drinking water sources



Total access :  
Household connections :

# Republic of Korea - rural - Access to improved drinking water sources



Total access :  
Household connections :