



WHO / UNICEF

**Joint Monitoring Programme
for Water Supply and Sanitation**

Coverage Estimates

Improved Drinking Water

Updated in July 2008

Kiribati

Urban and Rural Water Kiribati

Census		1990	
WATER	URBAN	RURAL	TOTAL
Piped water	2469	1276	
Protected well	463	1203	
Rain water	1161	800	
Open well	1141	6104	
Other	149	640	
Total	5383	10023	
Access to improved drinking water sources	76%	33%	
% House connections	46%	13%	

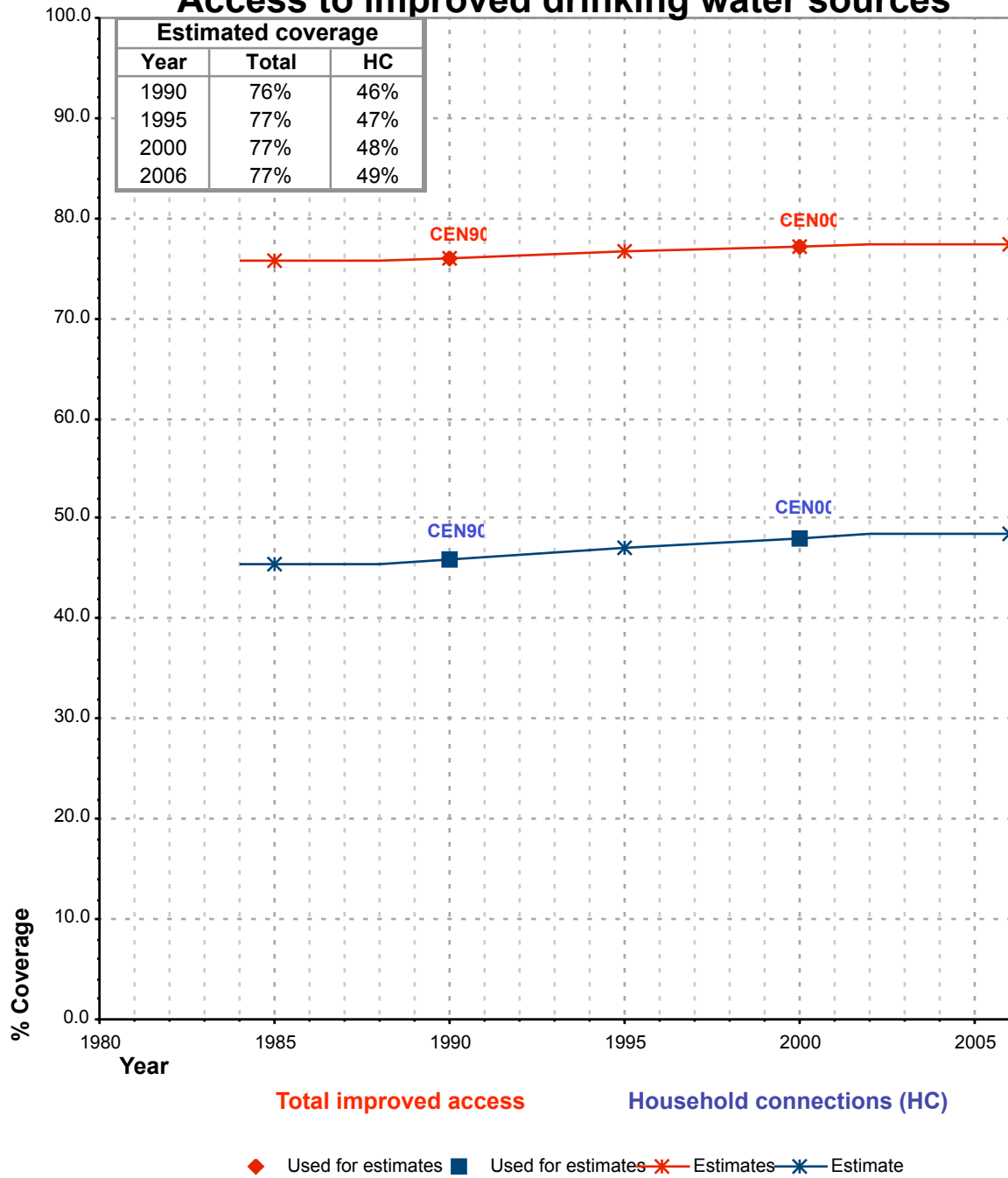
Kiribati Statistics Office

Census		2000	
WATER	URBAN	RURAL	TOTAL
Piped water	3148	2199	
Protected well	801	2336	
Rain water	1103	777	
Open well	1488	5410	
Other			
Total	6540	10722	
Access to improved drinking water sources	77%	50%	
% House connections	48%	21%	

Kiribati Statistics Office

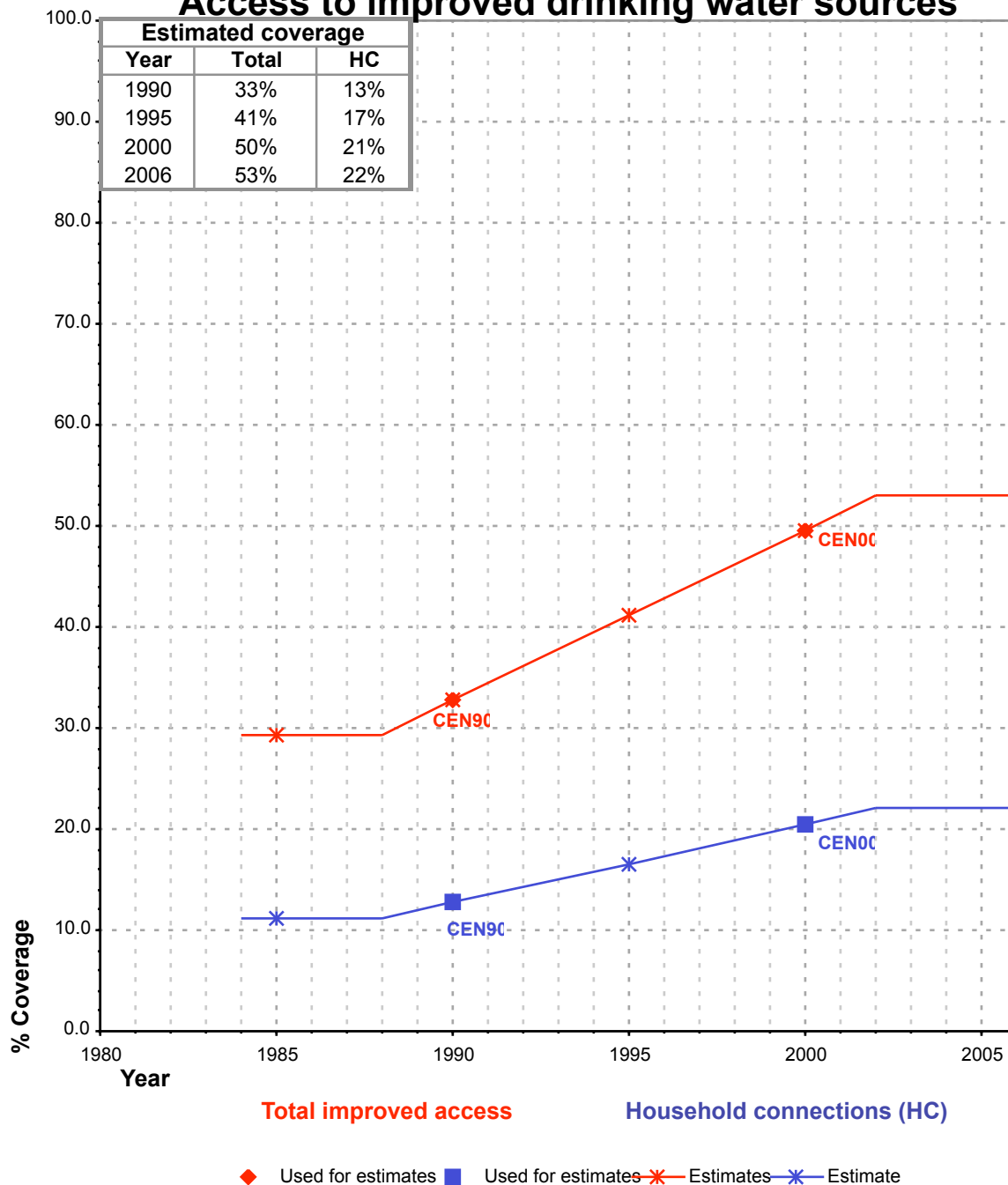
Kiribati			DRINKING WATER							
			URBAN				RURAL			
			HC		Total		HC		Total	
Source	Code	Year	Used for estimates	Not used for estimates	Used for estimates	Not used for estimates	Used for estimates	Not used for estimates	Used for estimates	Not used for estimates
The International Drinking Water Supply and Sanitation Decade. Review of National Baseline Data (as at December 1980). WHO 1984	WHO80	1980		86.0		86.0				70.0
The International Drinking Water Supply and Sanitation Decade. Review of National Progress (as at December 1988). WHO 1990.	WHO88	1988		71.0		98.0				44.0
The International Drinking Water Supply and Sanitation Decade. End of Decade Review (as at December 1990). WHO1992.	WHO90	1990		87.0		91.0				63.0
Census 1990, Kiribati Statistics Office	CEN90	1990	45.9		76.0		12.7		32.7	
Water Supply and Sanitation Sector Monitoring Report - 1996. Sector Status as of 31 December 1994. WHO/UNICEF 1996.	JMP96	1994				100.0				100.0
Global Water Supply and Sanitation Assessment 2000. Water Supply and Sanitation Sector Questionnaire - 1999. (Form 6 sent to WHO)	JMP99	1999		71.0		82.0		25.0		25.0
Census 2000, Kiribati Statistics Office	CEN00	2000	48.1		77.2		20.5		49.5	

Kiribati - urban - Access to improved drinking water sources



Total access :
Household connections :

Kiribati - rural - Access to improved drinking water sources



Total access :
Household connections :