



WHO / UNICEF

**Joint Monitoring Programme
for Water Supply and Sanitation**

Coverage Estimates
Improved Sanitation

Updated in July 2008

Kiribati

Urban and Rural Sanitation Kiribati

| Census | | 1990 | |
|---|-------------|--------------|-------|
| SANITATION | URBAN | RURAL | TOTAL |
| Proportion shared improved facilities/all improved facilities | 0.22 | 0.08 | |
| Flush toilet | 877 | 519 | |
| Water Seal Latrine | 392 | 2298 | |
| shared flush toilet | 350 | 256 | |
| public toilet | 1012 | 324 | |
| Attolette | | | |
| Lagoon beach | 938 | 4932 | |
| Ocean beach | 1059 | 4368 | |
| Other | 298 | 1601 | |
| Total | 4926 | 14298 | |
| % Use of an improved sanitation facility | 33% | 21% | |
| % Sewerage connections | | | |
| % Open defecation | 41% | 65% | |

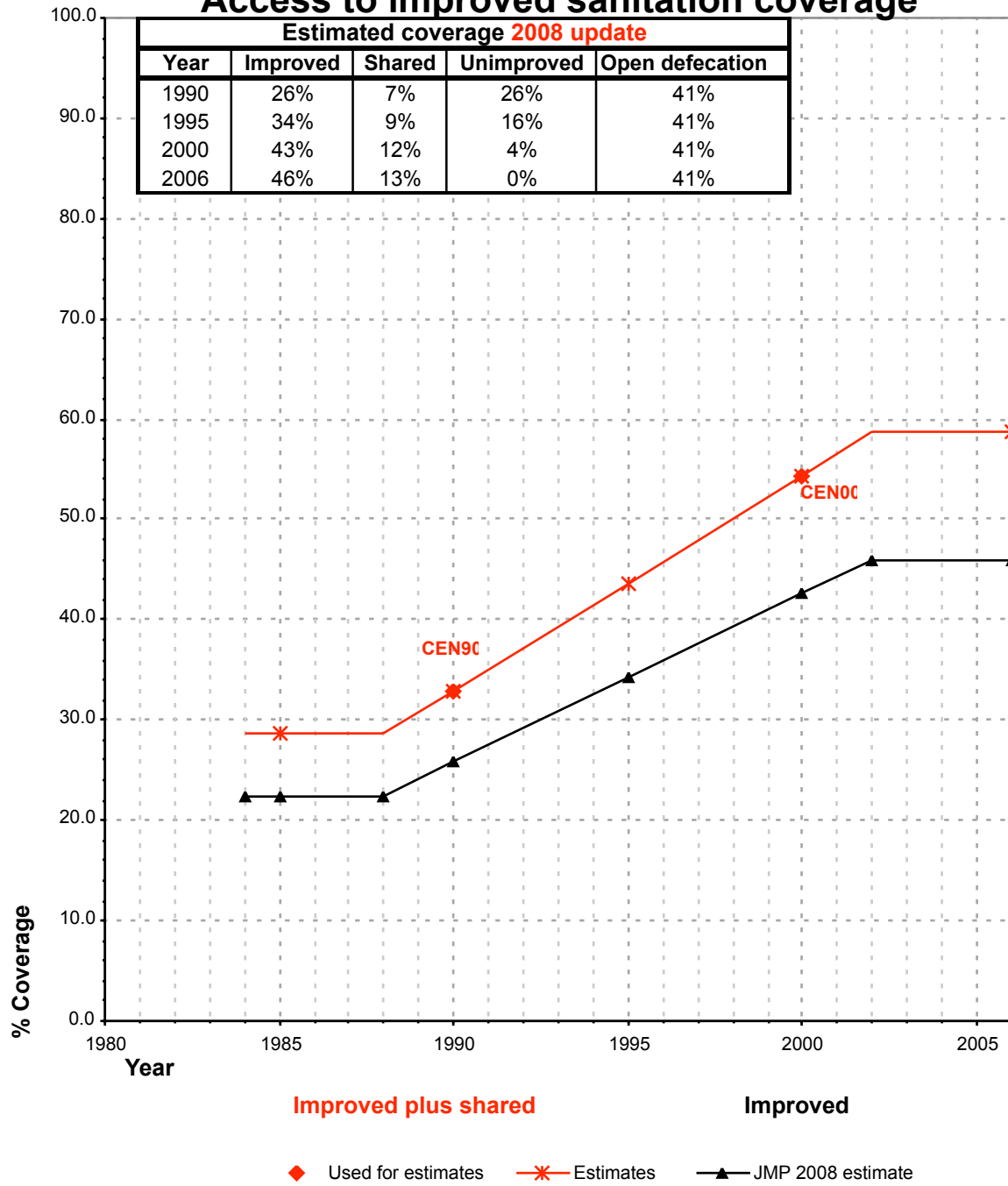
Kiribati Statistics Office

| Census | | 2000 | |
|---|-------------|--------------|-------|
| SANITATION | URBAN | RURAL | TOTAL |
| Flush toilet | 2024 | 905 | |
| Water Seal Latrine | 1222 | 2536 | |
| public toilet | | | |
| Attolette | 85 | 281 | |
| Lagoon beach | 1178 | 4438 | |
| Ocean beach | 1278 | 4085 | |
| Other | 180 | 3260 | |
| Total | 5967 | 15505 | |
| % Use of an improved sanitation facility | 54% | 22% | |
| % Sewerage connections | | | |
| % Open defecation | 41% | 55% | |

Kiribati Statistics Office

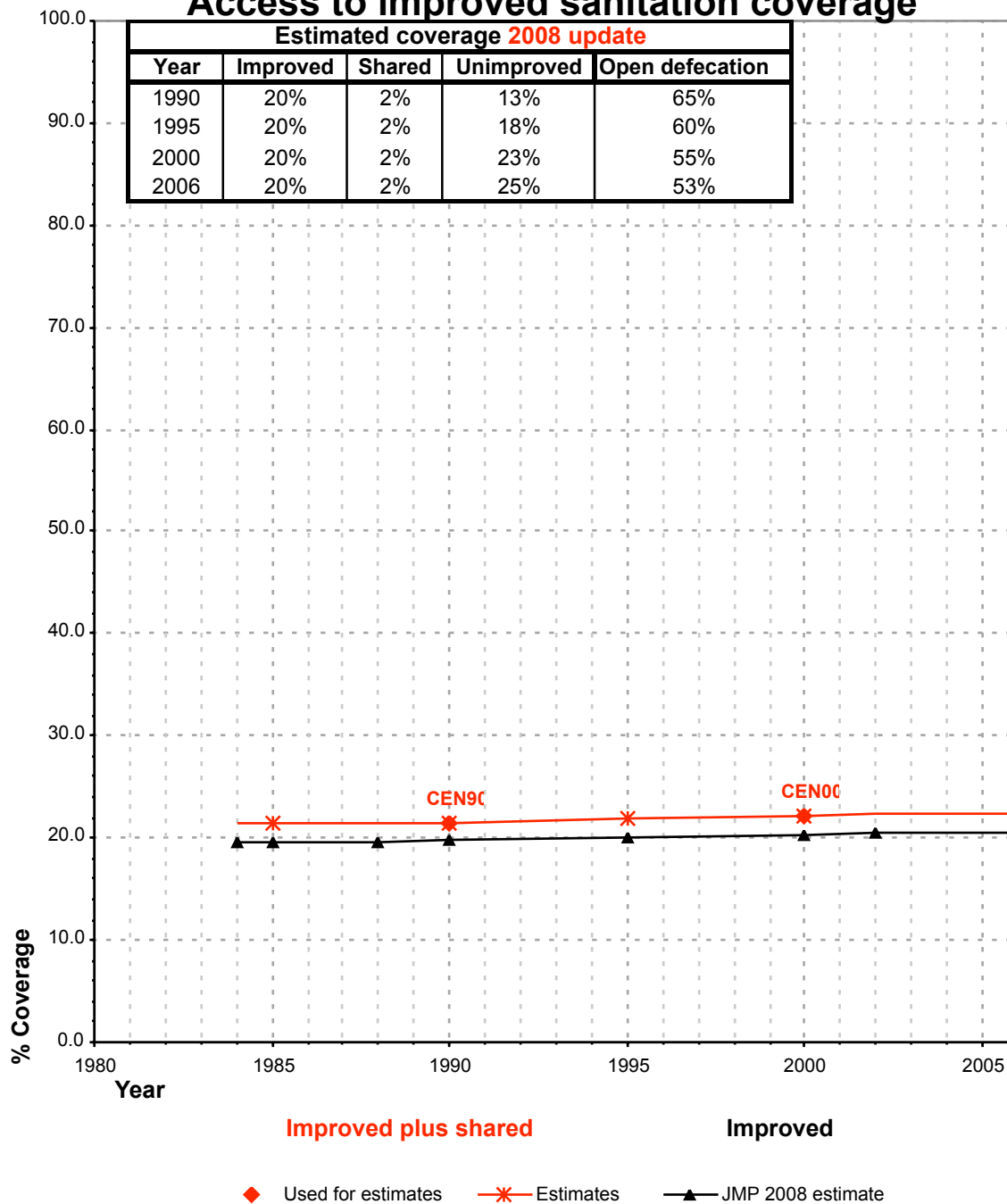
| Kiribati | | | SANITATION | | | | | | | | | | OPEN DEFECACTION | | | |
|---|-------|------|--------------------|------------------------|--------------------|------------------------|--------------------|------------------------|--------------------|------------------------|--------------------|------------------------|--------------------|------------------------|--|--|
| | | | URBAN | | | | RURAL | | | | | | | | | |
| | | | HC | | Total | | HC | | Total | | Urban | | Rural | | | |
| Source | Code | Year | Used for estimates | Not used for estimates | Used for estimates | Not used for estimates | Used for estimates | Not used for estimates | Used for estimates | Not used for estimates | Used for estimates | Not used for estimates | Used for estimates | Not used for estimates | | |
| The International Drinking Water Supply and Sanitation Decade. Review of National Baseline Data (as at December 1980). WHO 1984 | WHO80 | 1980 | | 0.0 | | 97.0 | | | | 94.0 | | | | | | |
| The International Drinking Water Supply and Sanitation Decade. Review of National Progress (as at December 1988). WHO 1990. | WHO88 | 1988 | | 62.0 | | 82.0 | | | | 44.0 | | | | | | |
| The International Drinking Water Supply and Sanitation Decade. End of Decade Review (as at December 1990). WHO1992. | WHO90 | 1990 | | 79.0 | | 91.0 | | | | 49.0 | | | | | | |
| Census 1990, Kiribati Statistics Office | CEN90 | 1990 | | | 32.9 | | | | 21.5 | | 40.5 | | 65.0 | | | |
| Water Supply and Sanitation Sector Monitoring Report - 1996. Sector Status as of 31 December 1994. WHO/UNICEF 1996. | JMP96 | 1994 | | | | 100.0 | | | | 100.0 | | | | | | |
| Global Water Supply and Sanitation Assessment 2000. Water Supply and Sanitation Sector Questionnaire - 1999. (Form 6 sent to WHO) | JMP99 | 1999 | 36.0 | | | 54.0 | 0.0 | | | 44.0 | | | | | | |
| Census 2000, Kiribati Statistics Office | CEN00 | 2000 | | | 54.4 | | | | 22.2 | | 41.2 | | 55.0 | | | |

Kiribati - urban - Access to improved sanitation coverage



Shared facilities :
 The proportion of the population using a shared improved sanitation facility is based on the Census

Kiribati - rural - Access to improved sanitation coverage



Shared facilities :
 The proportion of the population using a shared improved sanitation facility is based on the Census