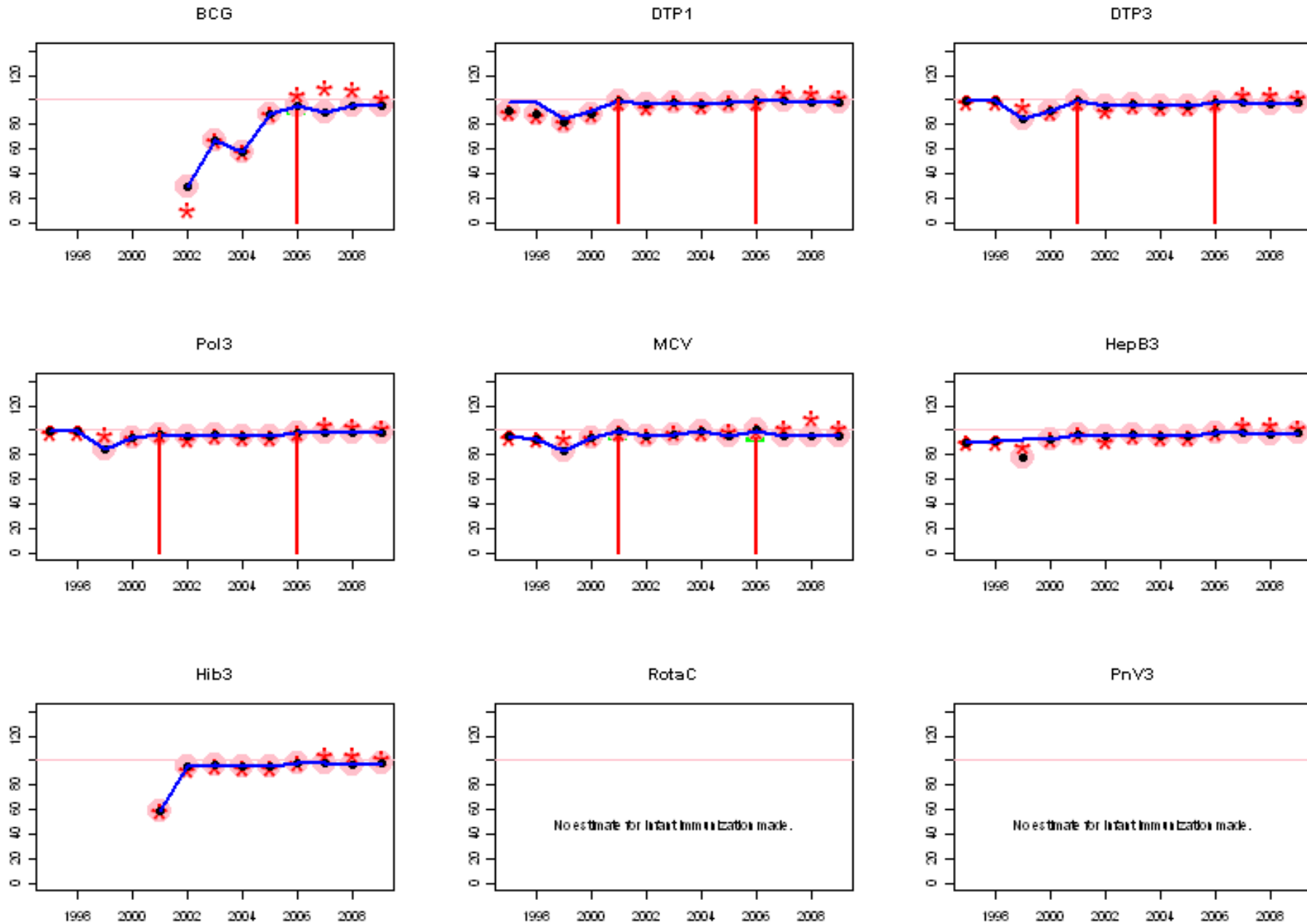
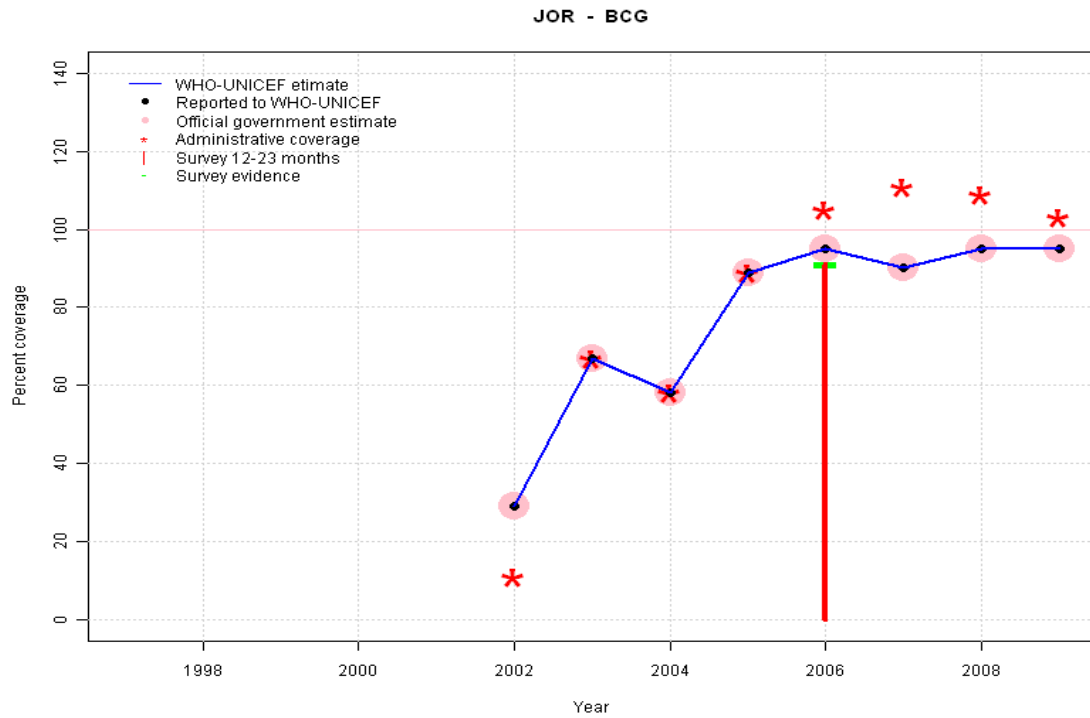


Jordan: WHO and UNICEF estimates of immunization coverage, 1997 - 2009



# Jordan - BCG

## Description:

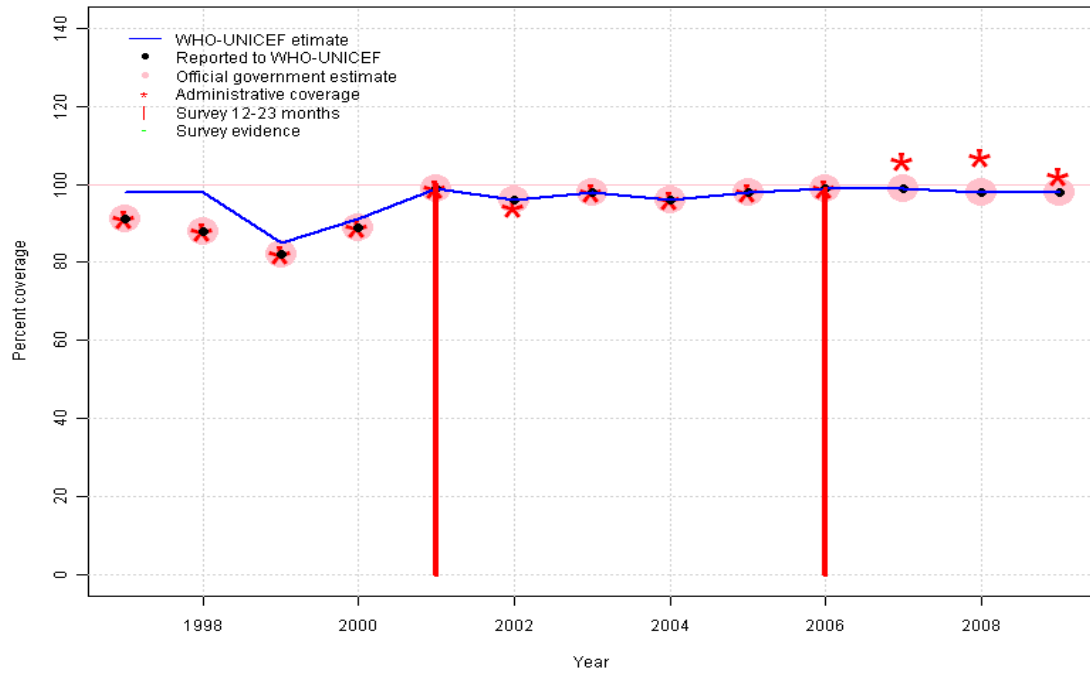


- 2002: Estimate based on trend in reported data.
- 2003: Estimate based on trend in reported data.
- 2004: Estimate based on trend in reported data.
- 2005: Estimate based on trend in reported data.
- 2006: Estimate based on reported data (95 percent) confirmed by survey (91 percent).
- 2007: Estimate based on reported data.
- 2008: Estimate based on reported data.
- 2009: Estimate based on reported data.

	1997	1998	1999	2000	2001	2002	2003	2004	2005	2006	2007	2008	2009
Estimate	NA	NA	NA	NA	NA	29	67	58	89	95	90	95	95
Reported	NA	NA	NA	NA	NA	29	67	58	89	95	90	95	95
Official	NA	NA	NA	NA	NA	29	67	58	89	95	90	95	95
Administrative	NA	NA	NA	NA	NA	11	67	58	89	105	111	109	103
Survey	NA	NA	NA	NA	NA	NA	NA	NA	NA	91	NA	NA	NA

# Jordan - DTP1

JOR - DTP1



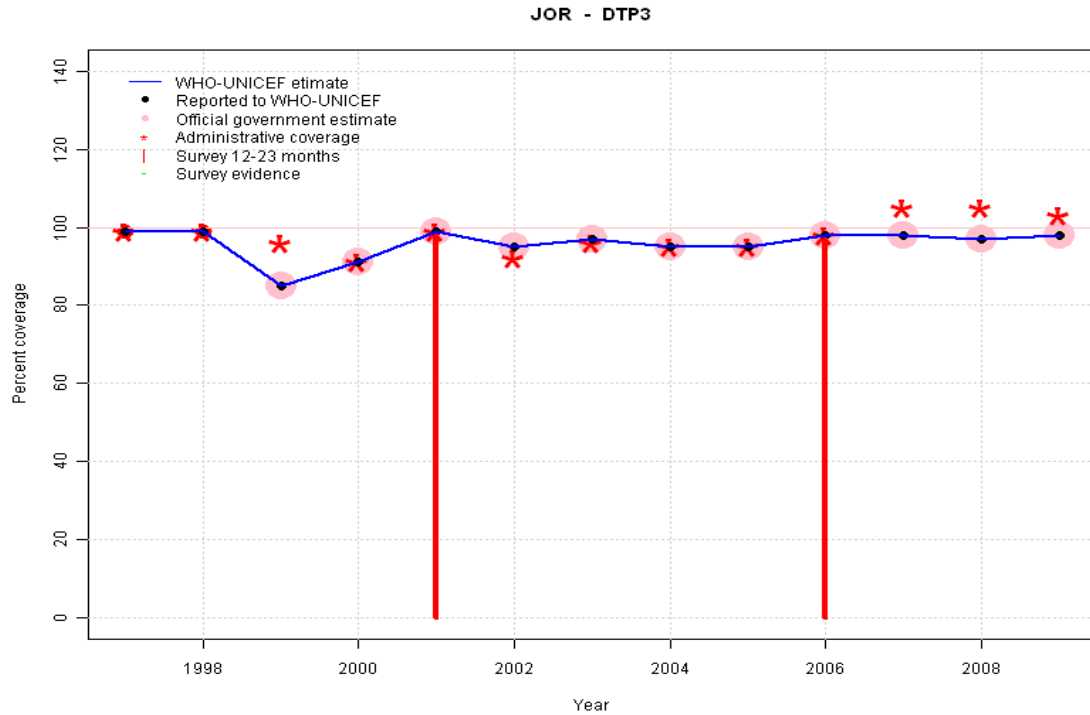
## Description:

- 1997: Estimated DTP3 greater than estimated DTP1; DTP1 estimate based on the relationship between DTP1 and DTP3 from 282 surveys.
- 1998: Estimated DTP3 greater than estimated DTP1; DTP1 estimate based on the relationship between DTP1 and DTP3 from 282 surveys.
- 1999: Reported data (82 percent) calibrated to 1997 and 2001 levels.
- 2000: Reported data (89 percent) calibrated to 1997 and 2001 levels.
- 2001: Estimate based on reported data (99 percent) confirmed by survey (99 percent).
- 2002: Estimate based on reported data.
- 2003: Estimate based on reported data.
- 2004: Estimate based on reported data.
- 2005: Estimate based on reported data.
- 2006: Estimate based on reported data (99 percent) confirmed by survey (99 percent).
- 2007: Estimate based on reported data.
- 2008: Estimate based on reported data.
- 2009: Estimate based on reported data.

	1997	1998	1999	2000	2001	2002	2003	2004	2005	2006	2007	2008	2009
Estimate	98	98	85	91	99	96	98	96	98	99	99	98	98
Reported	91	88	82	89	99	96	98	96	98	99	99	98	98
Official	91	88	82	89	99	96	98	96	98	99	99	98	98
Administrative	91	88	82	89	99	94	98	96	98	99	106	107	102
Survey	NA	NA	NA	NA	99	NA	NA	NA	NA	99	NA	NA	NA

# Jordan - DTP3

## Description:

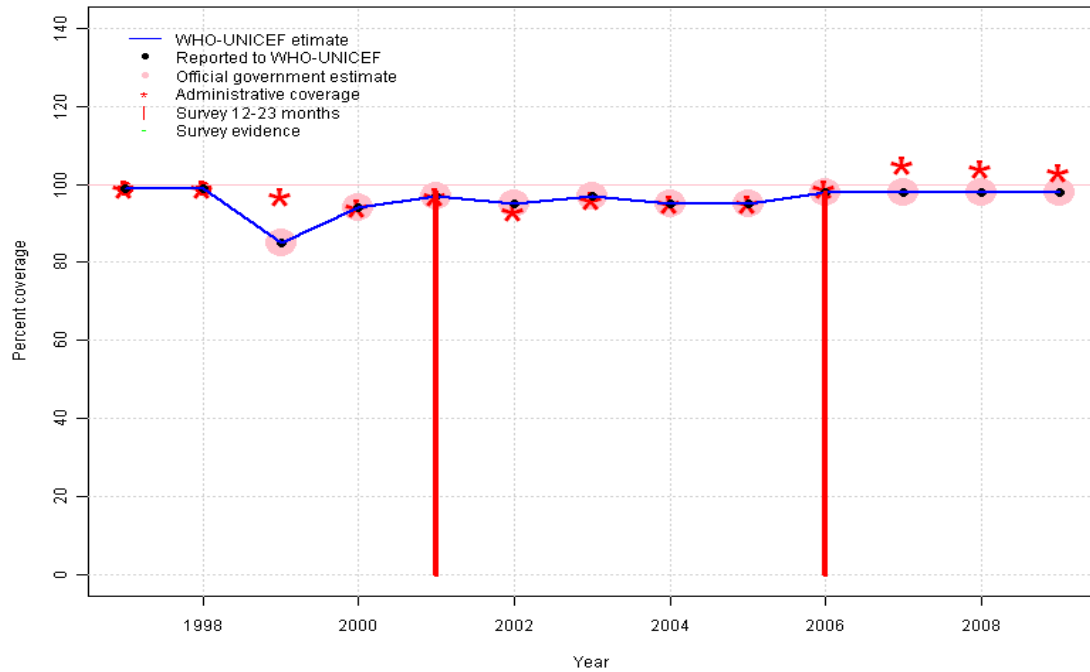


- 1997: Legacy estimate.
- 1998: Estimate based on reported data.
- 1999: Estimate based on reported data.
- 2000: Estimate based on reported data.
- 2001: Estimate based on reported data (99 percent) confirmed by survey (99 percent). Survey results (98 percent) adjusted for recall bias to 99 percent based on first dose card or history coverage (100 percent) and documented drop-out between first (78 percent) and third (77 percent) doses.
- 2002: Estimate based on reported data.
- 2003: Estimate based on reported data.
- 2004: Estimate based on reported data.
- 2005: Estimate based on reported data.
- 2006: Estimate based on reported data (98 percent) confirmed by survey (98 percent). Survey results (97 percent) adjusted for recall bias to 98 percent based on first dose card or history coverage (99 percent) and documented drop-out between first (90 percent) and third (89 percent) doses.
- 2007: Estimate based on reported data.
- 2008: Estimate based on reported data.
- 2009: Estimate based on reported data.

	1997	1998	1999	2000	2001	2002	2003	2004	2005	2006	2007	2008	2009
Estimate	99	99	85	91	99	95	97	95	95	98	98	97	98
Reported	99	99	85	91	99	95	97	95	95	98	98	97	98
Official	NA	NA	85	91	99	95	97	95	95	98	98	97	98
Administrative	99	99	96	91	99	92	96	95	95	98	105	105	103
Survey	NA	NA	NA	NA	99	NA	NA	NA	NA	98	NA	NA	NA

# Jordan - Pol3

JOR - Pol3



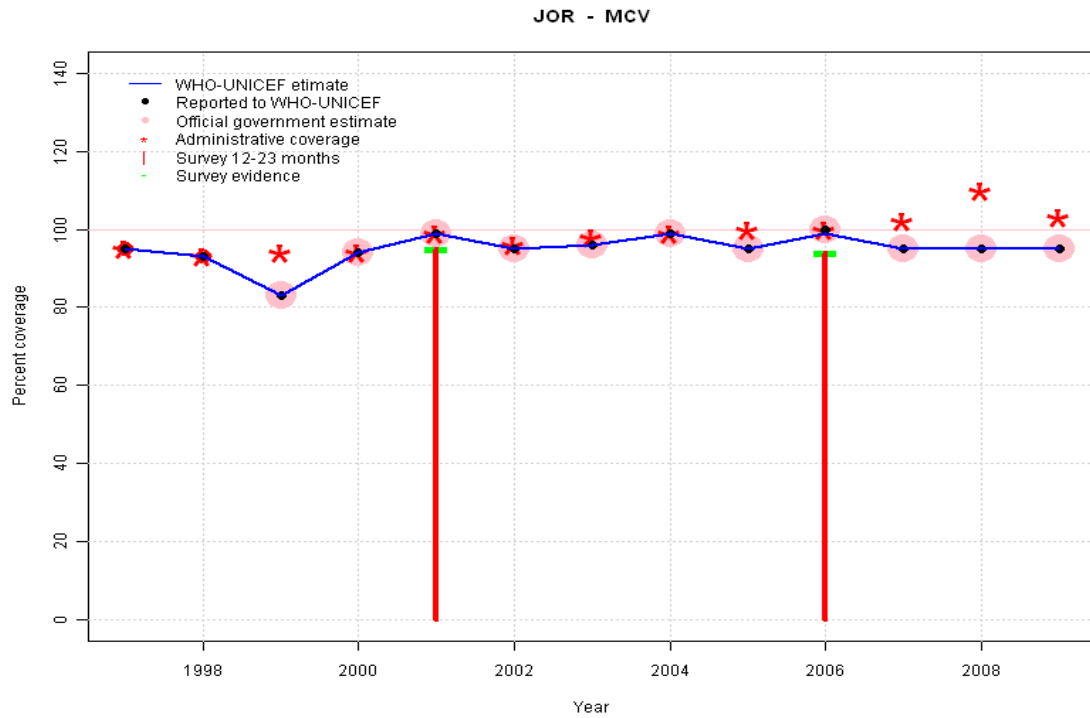
## Description:

- 1997: Legacy estimate.
- 1998: Estimate based on reported data.
- 1999: Estimate based on reported data.
- 2000: Estimate based on reported data.
- 2001: Estimate based on reported data (97 percent) confirmed by survey (99 percent). Survey results (98 percent) adjusted for recall bias to 99 percent based on first dose card or history coverage (100 percent) and documented drop-out between first (78 percent) and third (77 percent) doses.
- 2002: Estimate based on reported data.
- 2003: Estimate based on reported data.
- 2004: Estimate based on reported data.
- 2005: Estimate based on reported data.
- 2006: Estimate based on reported data (98 percent) confirmed by survey (98 percent). Survey results (98 percent) adjusted for recall bias to 98 percent based on first dose card or history coverage (99 percent) and documented drop-out between first (90 percent) and third (89 percent) doses.
- 2007: Estimate based on reported data.
- 2008: Estimate based on reported data.
- 2009: Estimate based on reported data.

	1997	1998	1999	2000	2001	2002	2003	2004	2005	2006	2007	2008	2009
Estimate	99	99	85	94	97	95	97	95	95	98	98	98	98
Reported	99	99	85	94	97	95	97	95	95	98	98	98	98
Official	NA	NA	85	94	97	95	97	95	95	98	98	98	98
Administrative	99	99	97	94	97	93	96	95	95	99	105	104	103
Survey	NA	NA	NA	NA	99	NA	NA	NA	NA	98	NA	NA	NA

# Jordan - MCV

## Description:

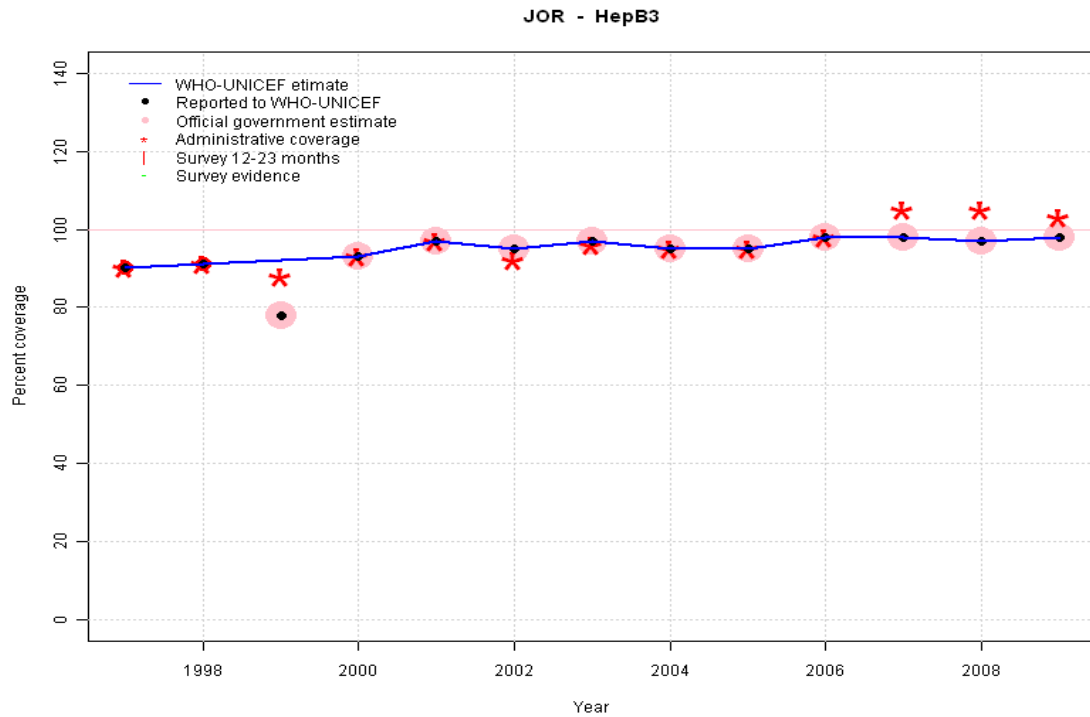


- 1997: Legacy estimate.
- 1998: Estimate based on reported data.
- 1999: Estimate based on reported data.
- 2000: Estimate based on reported data.
- 2001: Estimate based on reported data (99 percent) confirmed by survey (95 percent).
- 2002: Estimate based on reported data.
- 2003: Estimate based on reported data.
- 2004: Estimate based on reported data.
- 2005: Estimate based on reported data.
- 2006: Estimate based on reported data (99 percent) confirmed by survey (94 percent).
- 2007: Estimate based on reported data.
- 2008: Estimate based on reported data.
- 2009: Estimate based on reported data.

	1997	1998	1999	2000	2001	2002	2003	2004	2005	2006	2007	2008	2009
Estimate	95	93	83	94	99	95	96	99	95	99	95	95	95
Reported	95	93	83	94	99	95	96	99	95	100	95	95	95
Official	NA	NA	83	94	99	95	96	99	95	100	95	95	95
Administrative	95	93	94	94	99	96	98	99	100	100	102	110	103
Survey	NA	NA	NA	NA	95	NA	NA	NA	NA	94	NA	NA	NA

# Jordan - HepB3

## Description:

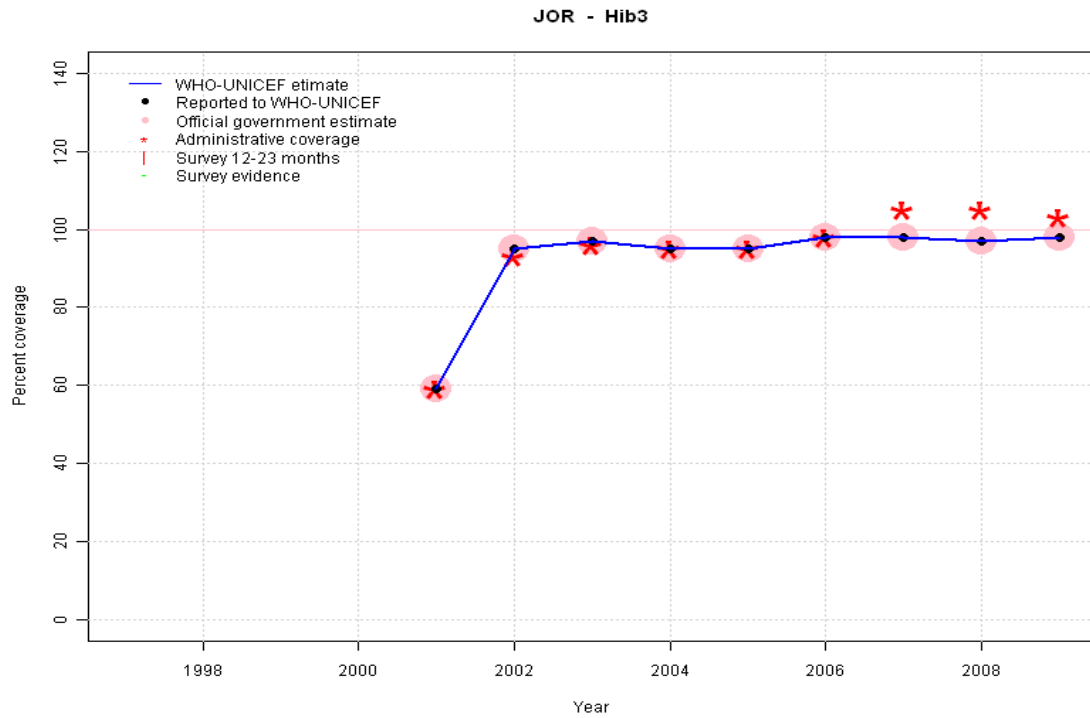


- 1997: Legacy estimate.
- 1998: Estimate based on reported data.
- 1999: Estimate based on trend in reported data. Missing or ignored reported value estimated by interpolation between reported values of 91 percent in 1998 and 93 percent in 2000. 1999 reported data (78 percent) inconsistent with data from other years.
- 2000: Estimate based on reported data.
- 2001: Estimate based on reported data.
- 2002: Estimate based on reported data.
- 2003: Estimate based on reported data.
- 2004: Estimate based on reported data.
- 2005: Estimate based on reported data.
- 2006: Estimate based on reported data.
- 2007: Estimate based on reported data.
- 2008: Estimate based on reported data.
- 2009: Estimate based on reported data.

	1997	1998	1999	2000	2001	2002	2003	2004	2005	2006	2007	2008	2009
Estimate	90	91	92	93	97	95	97	95	95	98	98	97	98
Reported	90	91	78	93	97	95	97	95	95	98	98	97	98
Official	NA	NA	78	93	97	95	97	95	95	98	98	97	98
Administrative	90	91	88	93	97	92	96	95	95	98	105	105	103
Survey	NA	NA	NA	NA	NA	NA	NA	NA	NA	NA	NA	NA	NA

# Jordan - Hib3

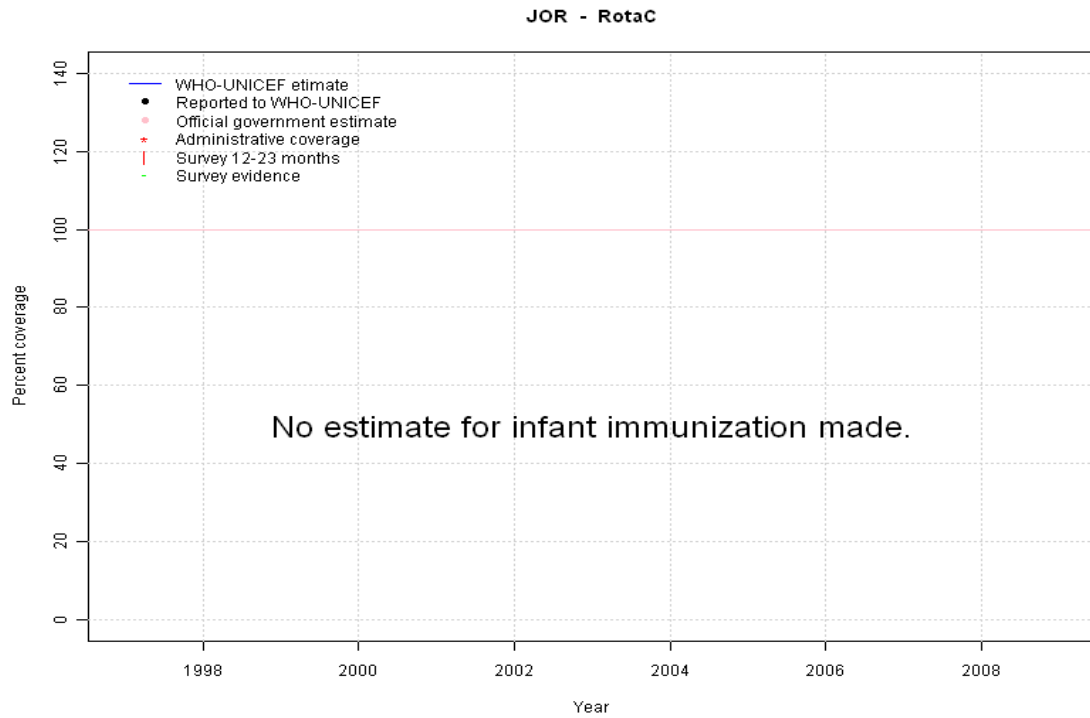
## Description:



2001: Estimate based on reported data. Hib introduced in 2001  
 2002: Estimate based on reported data.  
 2003: Estimate based on reported data.  
 2004: Estimate based on reported data.  
 2005: Estimate based on reported data.  
 2006: Estimate based on reported data.  
 2007: Estimate based on reported data.  
 2008: Estimate based on reported data.  
 2009: Estimate based on reported data.

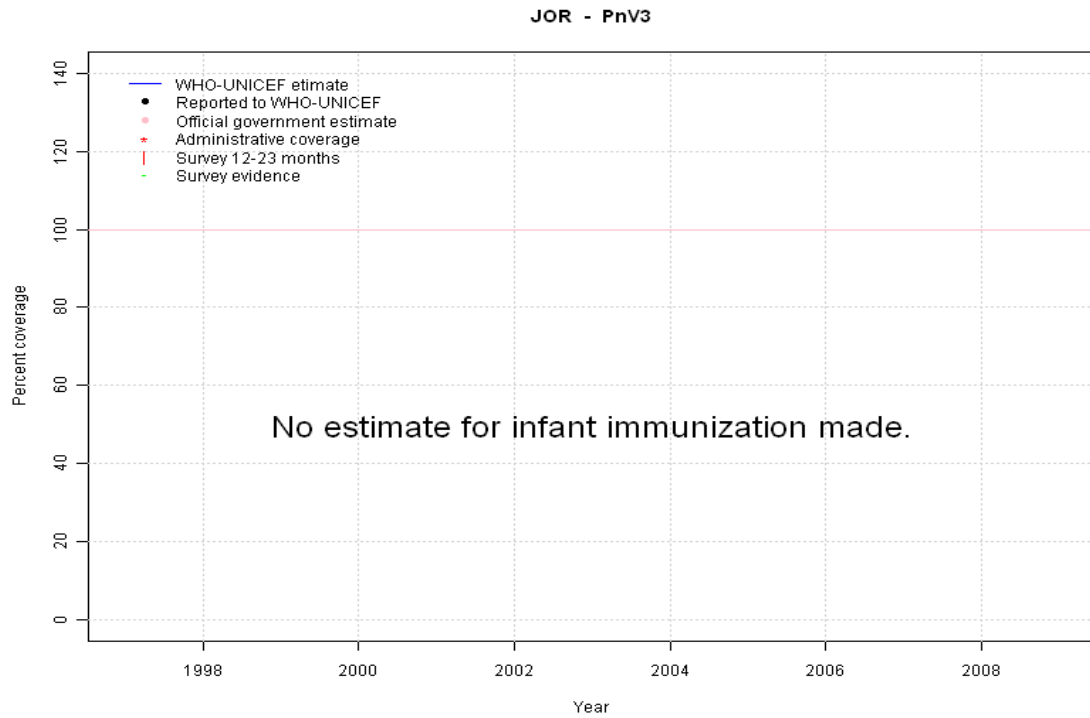
	1997	1998	1999	2000	2001	2002	2003	2004	2005	2006	2007	2008	2009
Estimate	NA	NA	NA	NA	59	95	97	95	95	98	98	97	98
Reported	NA	NA	NA	NA	59	95	97	95	95	98	98	97	98
Official	NA	NA	NA	NA	59	95	97	95	95	98	98	97	98
Administrative	NA	NA	NA	NA	59	93	96	95	95	98	105	105	103
Survey	NA	NA	NA	NA	NA	NA	NA	NA	NA	NA	NA	NA	NA

# Jordan - RotaC



	1997	1998	1999	2000	2001	2002	2003	2004	2005	2006	2007	2008	2009
Estimate	NA	NA	NA	NA	NA	NA	NA	NA	NA	NA	NA	NA	NA
Reported	NA	NA	NA	NA	NA	NA	NA	NA	NA	NA	NA	NA	NA
Official	NA	NA	NA	NA	NA	NA	NA	NA	NA	NA	NA	NA	NA
Administrative	NA	NA	NA	NA	NA	NA	NA	NA	NA	NA	NA	NA	NA
Survey	NA	NA	NA	NA	NA	NA	NA	NA	NA	NA	NA	NA	NA

# Jordan - PnV3



	1997	1998	1999	2000	2001	2002	2003	2004	2005	2006	2007	2008	2009
Estimate	NA	NA	NA	NA	NA	NA	NA	NA	NA	NA	NA	NA	NA
Reported	NA	NA	NA	NA	NA	NA	NA	NA	NA	NA	NA	NA	NA
Official	NA	NA	NA	NA	NA	NA	NA	NA	NA	NA	NA	NA	NA
Administrative	NA	NA	NA	NA	NA	NA	NA	NA	NA	NA	NA	NA	NA
Survey	NA	NA	NA	NA	NA	NA	NA	NA	NA	NA	NA	NA	NA

# Jordan - survey details

## 2006 Jordan Population and Family Health Survey 2007

Vaccine	Confirmation method	Coverage	Age cohort	Sample	Cards seen
BCG	C or H <12 months	90	12-23 m	1870	90
BCG	Card	83	12-23 m	1870	90
BCG	Card or History	91	12-23 m	1870	90
BCG	History	9	12-23 m	1870	90
DTP1	C or H <12 months	98	12-23 m	1870	90
DTP1	Card	90	12-23 m	1870	90
DTP1	Card or History	99	12-23 m	1870	90
DTP1	History	9	12-23 m	1870	90
DTP3	History	9	12-23 m	1870	90
DTP3	C or H <12 months	96	12-23 m	1870	90
DTP3	Card or History	97	12-23 m	1870	90
DTP3	Card	89	12-23 m	1870	90
MCV	C or H <12 months	86	12-23 m	1870	90
MCV	Card	86	12-23 m	1870	90
MCV	Card or History	94	12-23 m	1870	90
MCV	History	8	12-23 m	1870	90
Pol1	C or H <12 months	99	12-23 m	1870	90
Pol1	Card	90	12-23 m	1870	90
Pol1	Card or History	99	12-23 m	1870	90
Pol1	History	9	12-23 m	1870	90
Pol3	History	9	12-23 m	1870	90
Pol3	C or H <12 months	97	12-23 m	1870	90
Pol3	Card	89	12-23 m	1870	90
Pol3	Card or History	98	12-23 m	1870	90

## 2005 Jordan Population and Family Health Survey 2007

Vaccine	Confirmation method	Coverage	Age cohort	Sample	Cards seen
HepB1	Card or History	99	24-59 m	1870	90

HepB3	Card or History	99	24-59 m	1870	90
Hib1	Card or History	99	24-59 m	1870	90
Hib3	Card or History	99	24-59 m	1870	90

## 2001 Jordan Population and Family Health Survey 2002

Vaccine	Confirmation method	Coverage	Age cohort	Sample	Cards seen
BCG	C or H <12 months	29	12-23 m	1135	78
BCG	Card	22	12-23 m	1135	78
BCG	Card or History	29	12-23 m	1135	78
BCG	History	7	12-23 m	1135	78
DTP1	C or H <12 months	99	12-23 m	1135	78
DTP1	Card	78	12-23 m	1135	78
DTP1	Card or History	100	12-23 m	1135	78
DTP1	History	22	12-23 m	1135	78
DTP3	History	21	12-23 m	1135	78
DTP3	C or H <12 months	98	12-23 m	1135	78
DTP3	Card	77	12-23 m	1135	78
DTP3	Card or History	98	12-23 m	1135	78
MCV	Card	75	12-23 m	1135	78
MCV	Card or History	95	12-23 m	1135	78
MCV	History	20	12-23 m	1135	78
MCV	C or H <12 months	89	12-23 m	1135	78
Pol1	C or H <12 months	100	12-23 m	1135	78
Pol1	Card	78	12-23 m	1135	78
Pol1	Card or History	100	12-23 m	1135	78
Pol1	History	22	12-23 m	1135	78
Pol3	C or H <12 months	97	12-23 m	1135	78
Pol3	Card	77	12-23 m	1135	78
Pol3	Card or History	98	12-23 m	1135	78
Pol3	History	21	12-23 m	1135	78

Further information and estimates for 1980-1996 are available at:

[http://www.childinfo.org/immunization\\_countryreports.html](http://www.childinfo.org/immunization_countryreports.html)

[http://www.who.int/immunization\\_monitoring/routine/immunization\\_coverage/en/index4.html](http://www.who.int/immunization_monitoring/routine/immunization_coverage/en/index4.html)

## Jordan

### WHO/UNICEF Estimates of Protection at Birth (PAB) against tetanus

In countries where tetanus is recommended for girls and women coverage is usually reported as "TT2+", i.e. the proportion of (pregnant) women who have received their second or superior TT dose in a given year. TT2 + coverage, however, can under-represent the actual proportion of births that are protected against tetanus as it does not include women who have previously received protective doses, women who received one dose without documentation of previous doses, and women who received doses in TT (or Td) supplemental immunization activities (SIA). In addition, girls who have received DTP in their childhood and are entering childbearing age, may be protected with TT booster doses.

WHO and UNICEF have developed a model that takes into account the above scenarios, and calculates the proportion of births in a given year that can be considered as having been protected against tetanus - "Protection at Birth".

In this model, annual cohorts of women are followed from infancy through their life. A proportion receive DTP in infancy (estimated based on the WHO-UNICEF estimates of DTP3 coverage). In addition some of these women also receive TT through routine services when they are pregnant and may also receive TT during SIAs. The model also adjusts reported data, taking into account coverage patterns in other years, and/or results available through surveys. The duration of protection is then calculated, based on WHO estimates of the duration of protection by doses ever received. The proportion of births that are protected against tetanus as a result of maternal immunization reflects the tetanus immunization received by the mother throughout her life rather than simply the TT immunizations received during the current pregnancy.

Year	PAB coverage estimate (%)
1997	52
1998	46
1999	41
2000	44
2001	41
2002	54
2003	46
2004	53
2005	67
2006	86
2007	87
2008	87
2009	87

---

<sup>1</sup> This model is described in: Griffiths U., Wolfson L., Quddus A., Younus M., Hafiz R.. Incremental cost-effectiveness of supplementary immunization activities to prevent neo-natal tetanus in Pakistan. Bulletin of the World Health Organization 2004; 82:643-651.